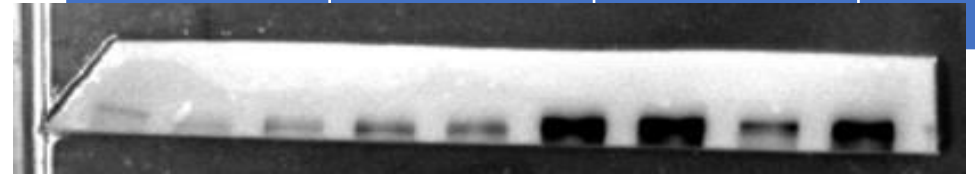


repeat1

cropped

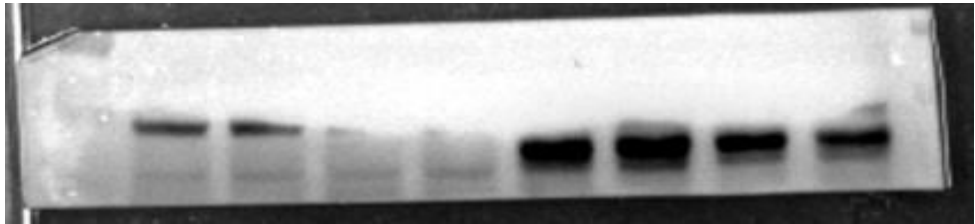
sham-DMSO	sham-TAN I	UO- DMSO	UO-TAN I
-----------	------------	----------	----------

Fn (ab23750)	270kd	R
--------------	-------	---



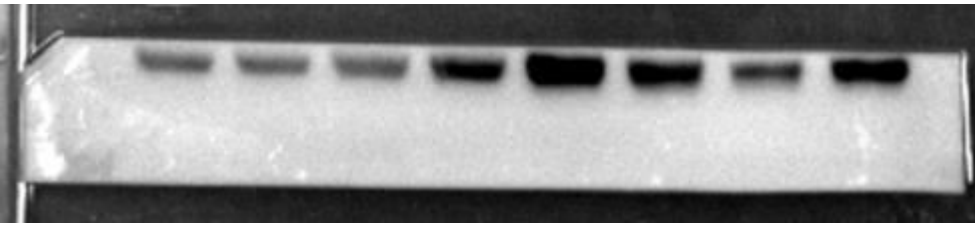
270kd

pSmad3 (ET1609-41)	54KD	R
--------------------	------	---



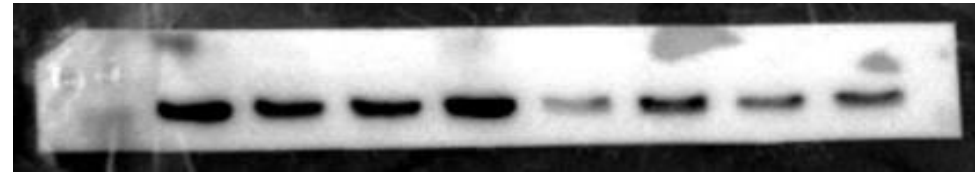
90kd  
66kd  
52kd

$\alpha$ -SMA (ET1607-53),R,	43kd	
------------------------------	------	--



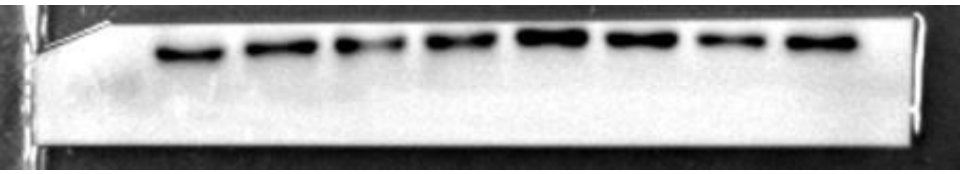
37kd

GAPDH (6004-1-Ig) ,	37KD,	M
---------------------	-------	---



37kd

Snail (A11794)	34KD	R
----------------	------	---



30kd

**Figure 2. Tan-I mitigates renal fibrosis in UO mice**

The expression of FN,  $\alpha$ -SMA, Snail and pSmad3 were analyzed by Western blotting and then quantified.

Fn (ab23750)  
270kd  
R

original

merged

Snail  
(A11794)

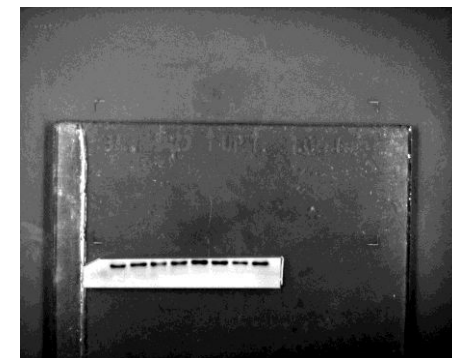
34KD

R

original

merged

repeat1



pSmad3  
(ET1609-41)

54KD

R



GAPDH (6004-1-Ig) ,  
37KD, M



a-SMA (ET1607-53),R,43kd

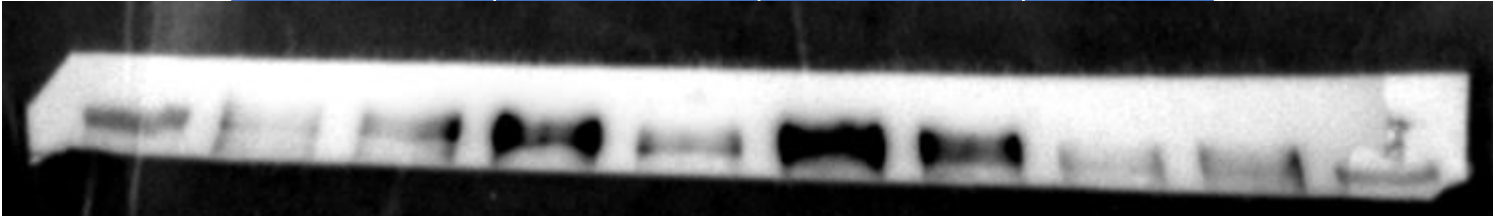


sham-DMSO    sham-TAN I    UUO- DMSO    UUO-TAN I

repeat2

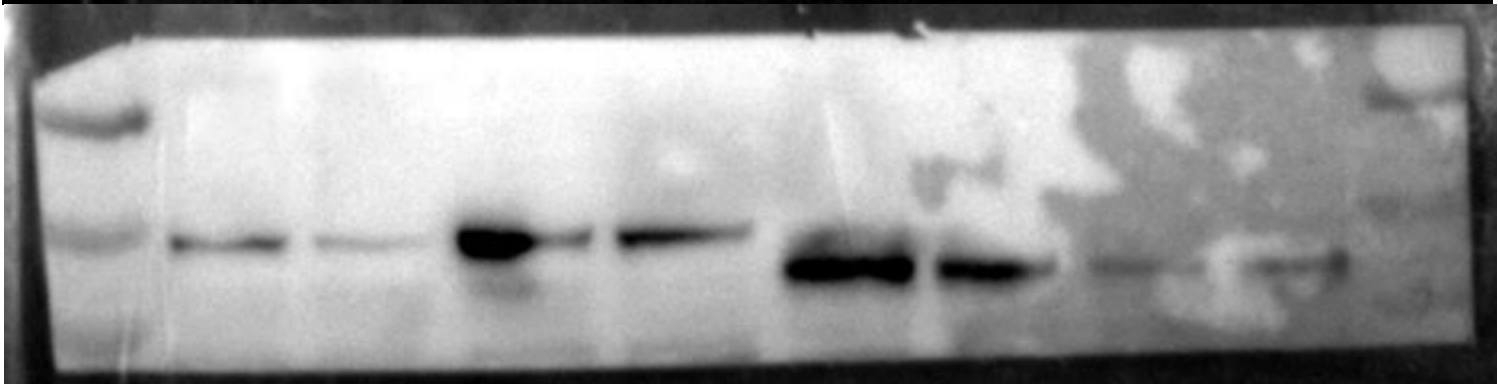
cropped

Fn (ab23750)  
270kd  
R



270kd

pSmad3 (ET1609-41)  
54KD  
R

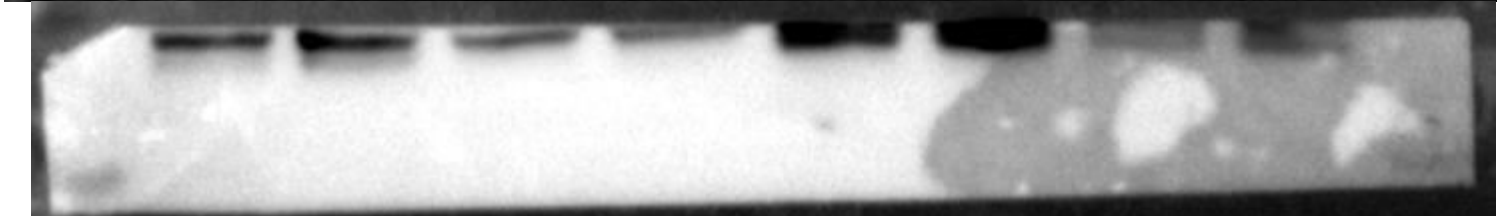


90kd

66kd

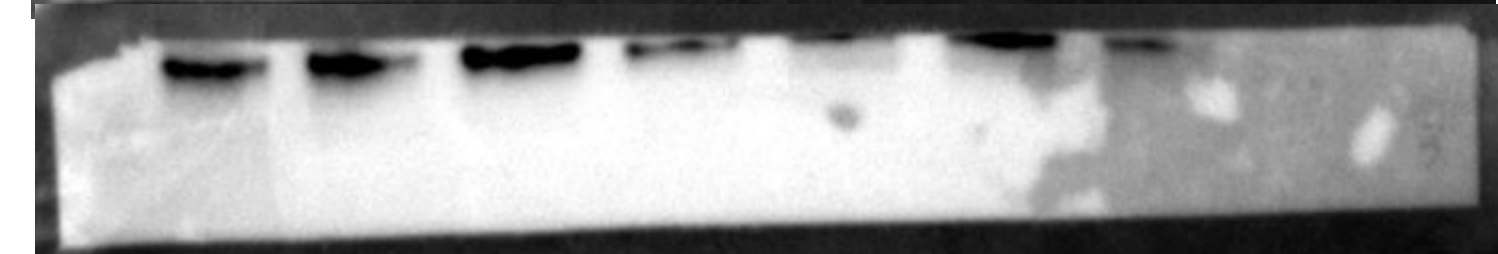
52kd

a-SMA (ET1607-53),R,43kd



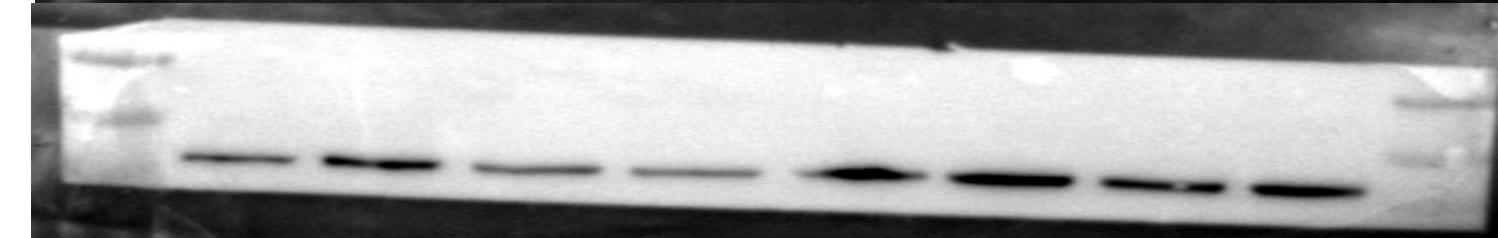
37kd

Snail (A11794)  
34KD  
R



30kd

a-Tubulin (AF0001), R,  
55KD



90kd

66kd

52kd

Fn (ab23750)  
270kd  
R

original

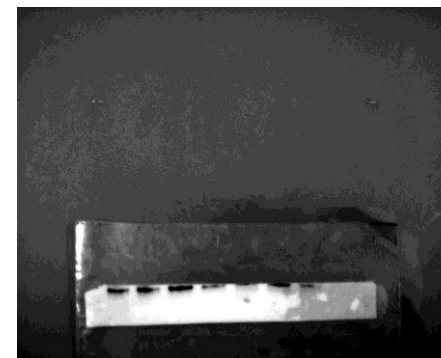
merged

Snail (A11794)  
34KD  
R

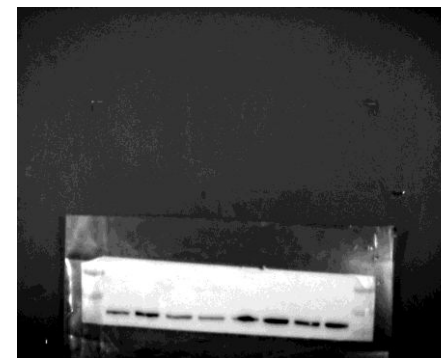
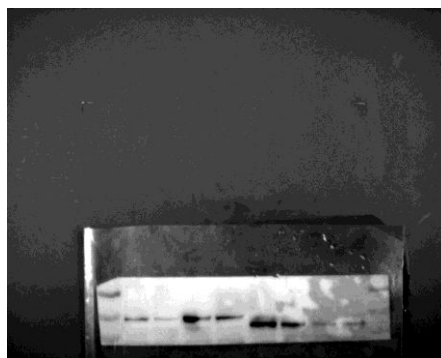
original

merged

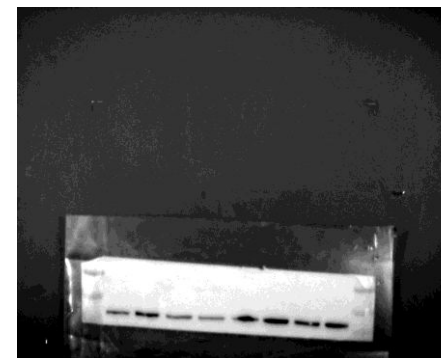
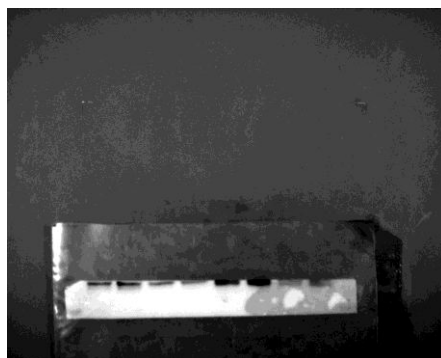
repeat2



pSmad3 (ET1609-41)  
54KD  
R



a-SMA (ET1607-53),R,43kd

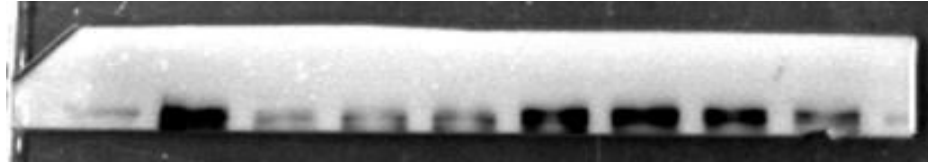


repeat3

cropped

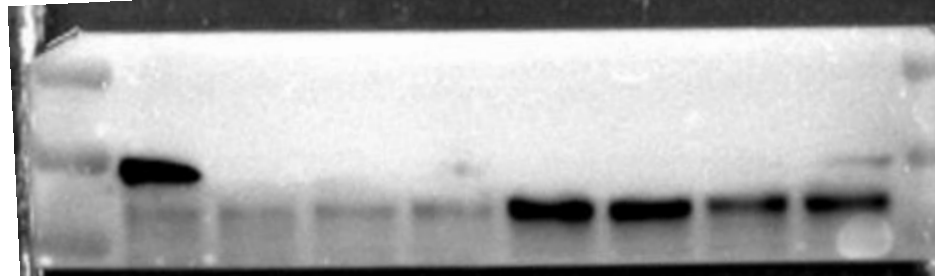


Fn (ab23750)  
270kd  
R



270kd

pSmad3 (ET1609-41)  
54KD  
R



90kd

66kd

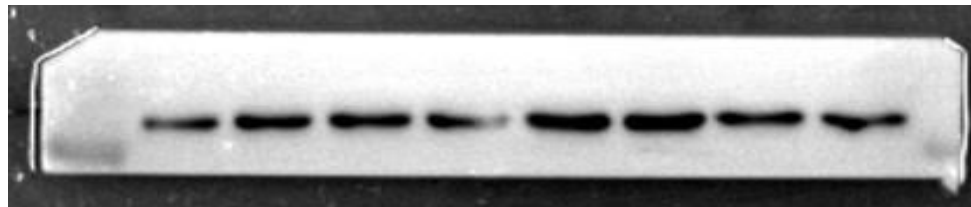
52kd

α-SMA (ET1607-53),R,43kd



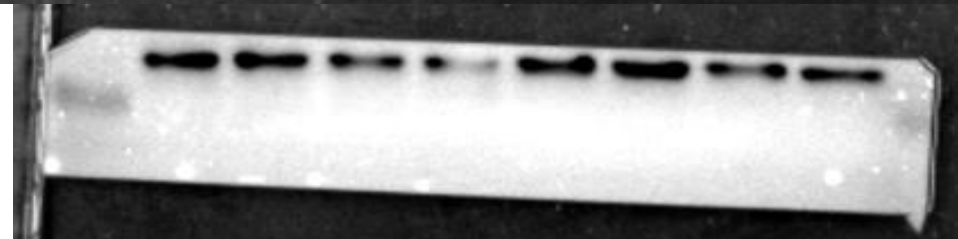
37kd

GAPDH (6004-1-Ig) ,  
37KD, M



37kd

Snail (A11794)	34KD	R
-------------------	------	---



30kd



Fn (ab23750)  
270kd  
R

original

merged

Snail  
(A11794)

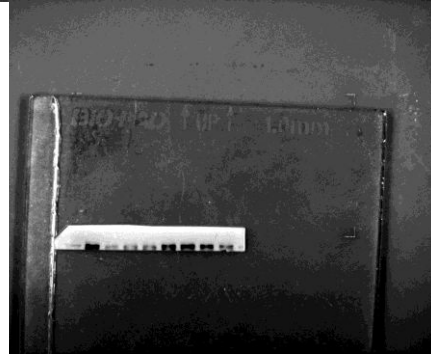
34KD

R

original

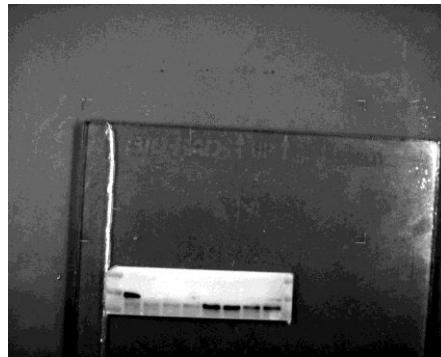
merged

repeat3

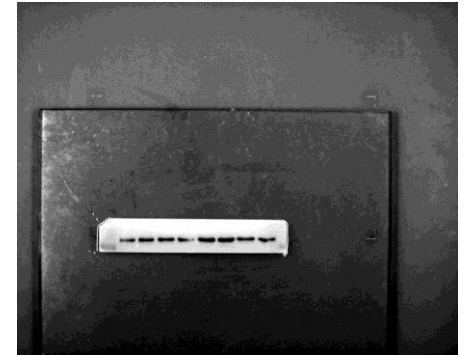


pSmad3 (ET1609-41)  
54KD

R



GAPDH (6004-1-Ig),  
37KD, M



a-SMA (ET1607-53),R,43kd

