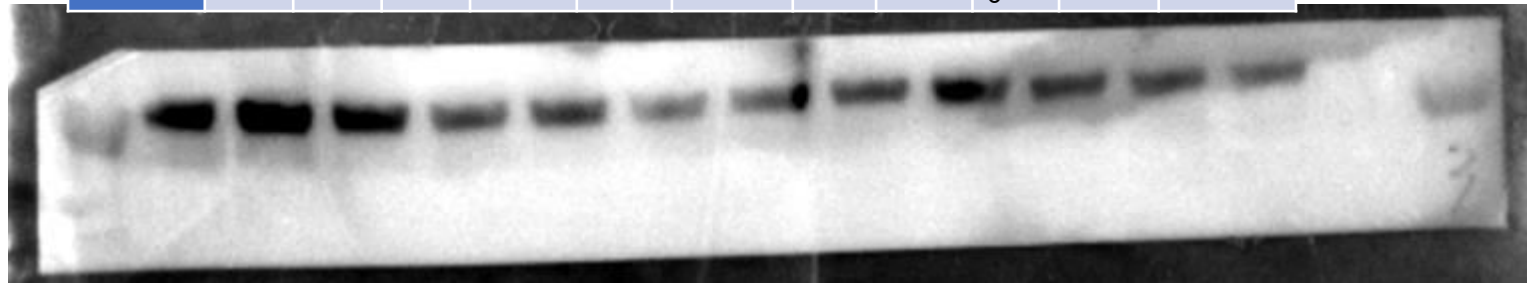


DMSO			TAN I-L			TAN I-M			TAN I-H		
DT1	DT2	DT3	DT4	DT5	DT6	DT7	DT8	DT9	DT10	DT11	DT12

NRK-49F cells were starved for 24h and followed by 24h treatment with different concentration (0.5, 5, 50 μ M) of Tan-I. The expression of inhibin beta-A (INHBA) was analyzed by Western blotting and then quantified.

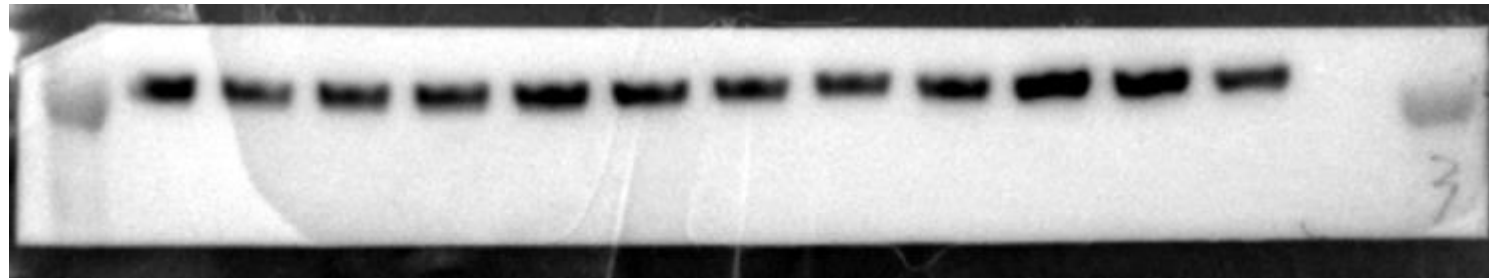
INHBA(ER1911-46)
45KD
R

repeat1
cropped



52kd

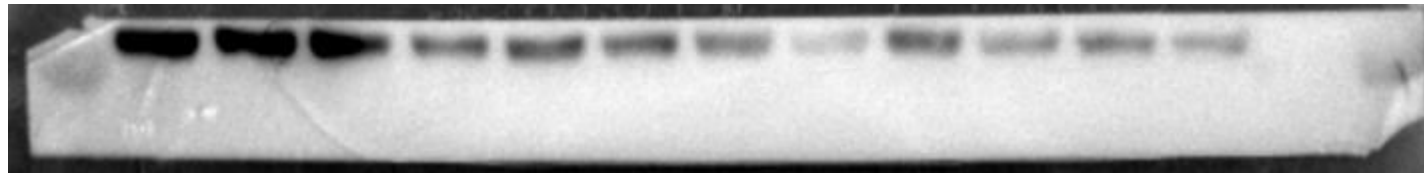
α -Tubulin (AF0001), R,
55KD



52kd

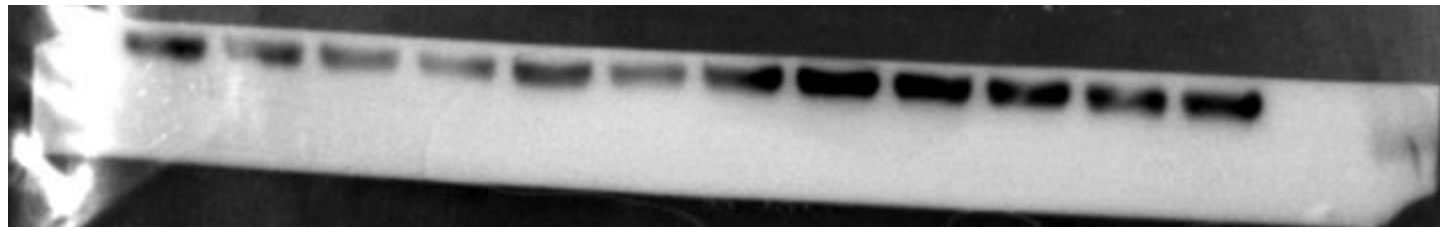
INHBA(ER1911-46)
45KD
R

repeat2



52kd

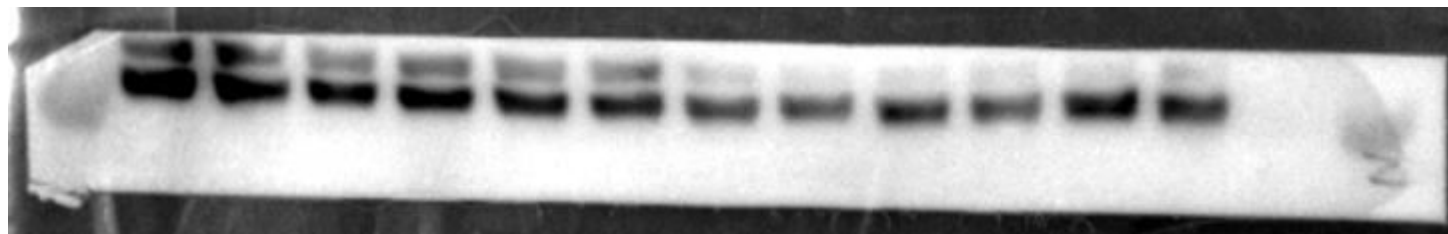
α -Tubulin (AF0001), R,
55KD



52kd

INHBA(ER1911-46)
45KD
R

repeat3



52kd

α -Tubulin (AF0001), R,
55KD



original

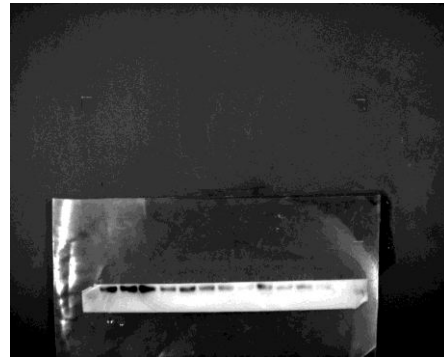
merged

a-Tubulin (AF0001),
R, 55KD

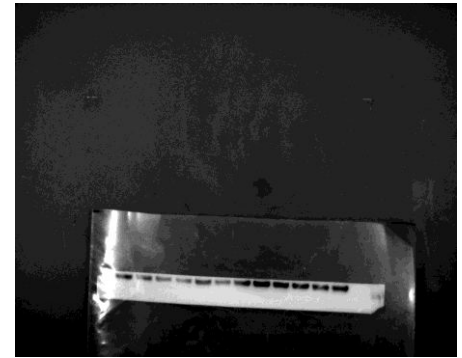
original

merged

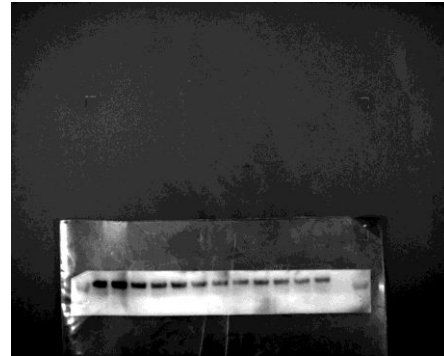
INHBA(ER1911-46)
45KD
R



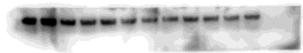
repeat1



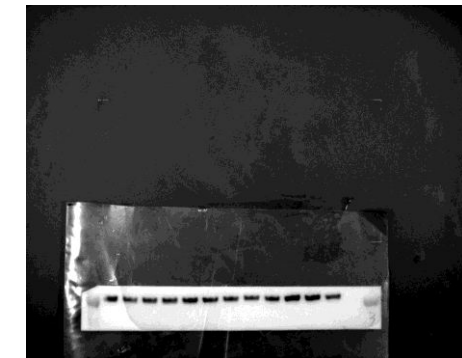
INHBA(ER1911-46)
45KD
R



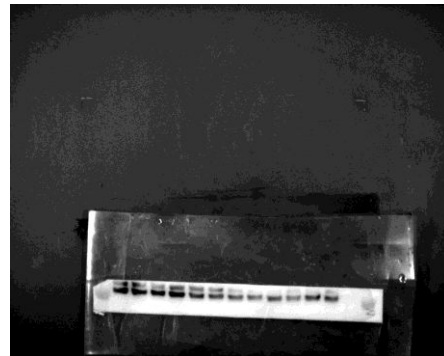
repeat2



a-Tubulin (AF0001),
R, 55KD



INHBA(ER1911-46)
45KD
R



repeat3



a-Tubulin (AF0001),
R, 55KD



cropped

INHBA(A5232)
45KD
R

repeat1

GAPDH (6004-1-Ig)
37KD
M

INHBA(A5232)
45KD
R

repeat2

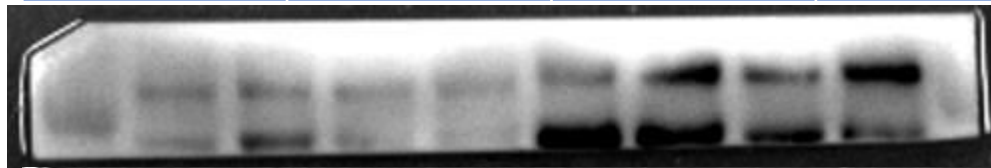
GAPDH (6004-1-Ig)
37KD
M

INHBA(A5232)
45KD
R

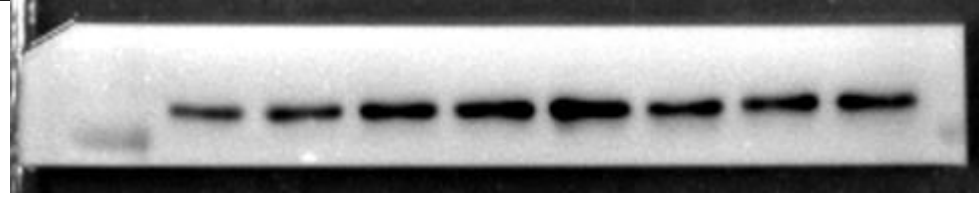
repeat3

α -Tubulin (AF0001), R,
55KD

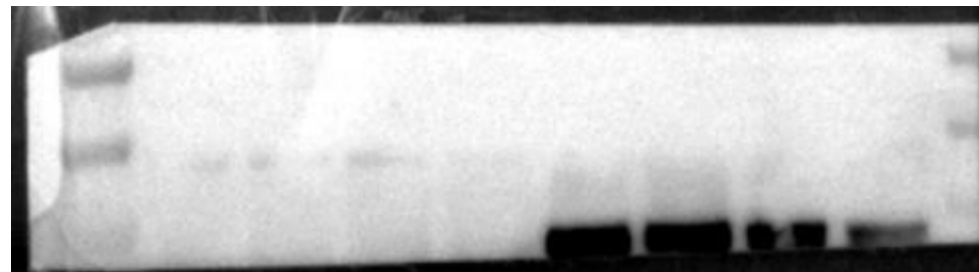
sham-DMSO sham-TAN I UO- DMSO UO-TAN I



52kd



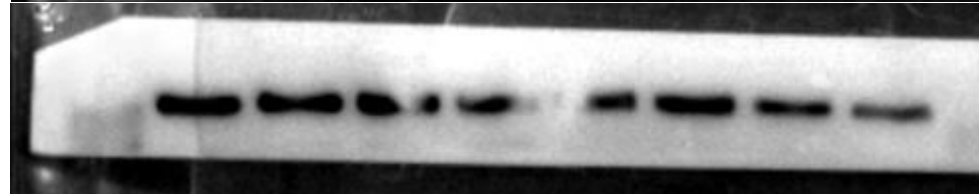
37kd



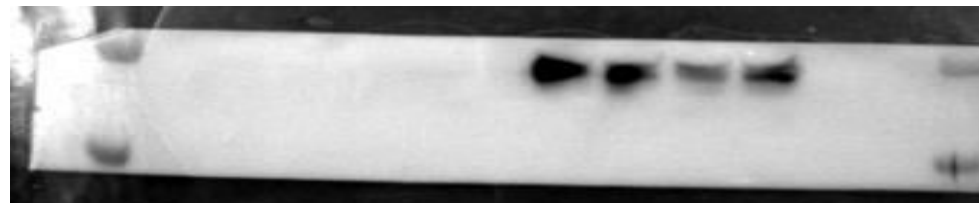
90kd

66kd

52kd

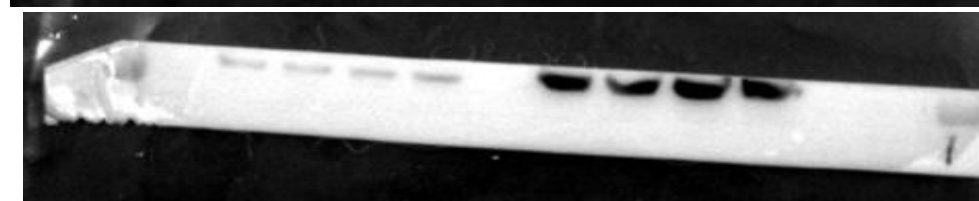


37kd



52kd

37kd



52kd

The expression of INHBA in sham or UO kidneys was analyzed by Western blotting and then quantified.

INHBA(A5232)

45KD

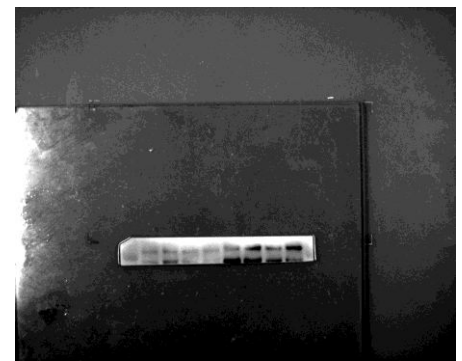
R

repeat1



original

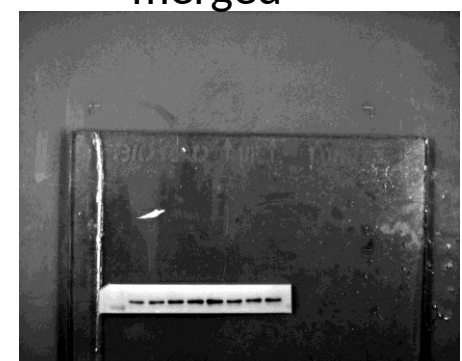
merged



GAPDH (6004-1-Ig) ,
37KD, M

original

merged



INHBA(A5232)

45KD

R

repeat2



GAPDH (6004-1-Ig) ,
37KD, M



INHBA(A5232)

45KD

R

repeat3



a-Tubulin (AF0001),
R, 55KD



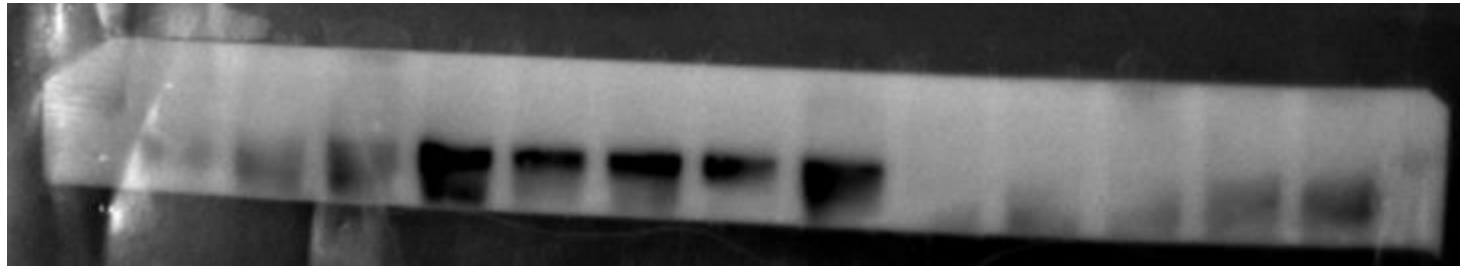
cropped

Mk	Ns-dms	Ns-dms	Ns-dms	Aan-dms	Aan-dms	Aan-dms	Aan-dms	Aan-dms	Aan-Tan-	Aan-Tan-	Aan-Tan-	Aan-Tan-	Aan-Tan-	mk
	o	o	o	o	o	o	o	o						

The expression of INHBA in NS or AAN kidneys was analyzed by Western blotting and then quantified.

INHBA(A5232)
45KD
R

repeat1



52kd

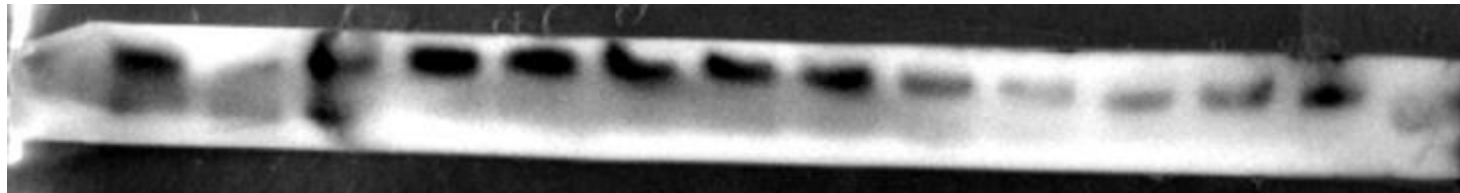
GAPDH (6004-1-Ig)
37KD
M



37kd

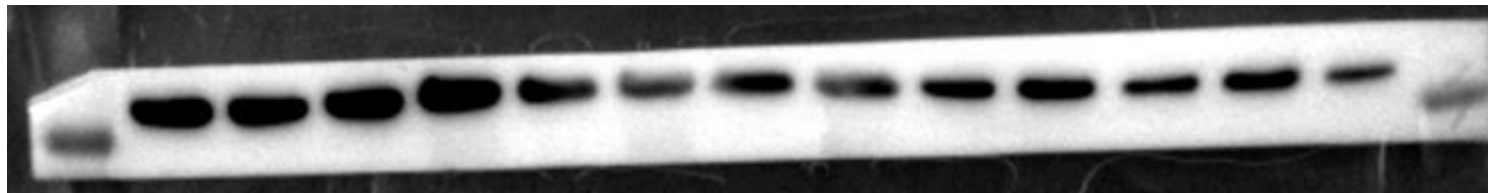
INHBA(ER1911-46)
45KD
R

repeat2



52kd

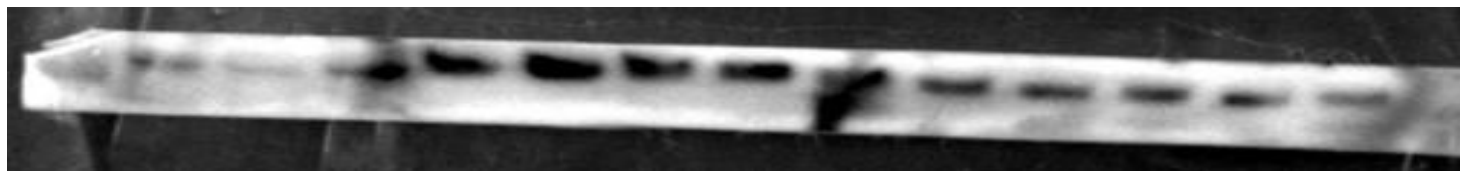
GAPDH (6004-1-Ig)
37KD
M



37kd

INHBA(ER1911-46)
45KD
R

repeat3



52kd

GAPDH (6004-1-Ig)
37KD
M



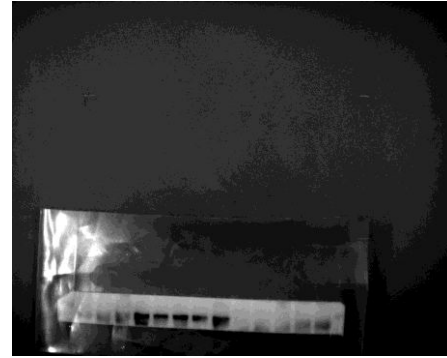
37kd

original

merged

GAPDH (6004-1-Ig) ,
37KD, M

INHBA(A5232)
45KD
R
repeat1



original

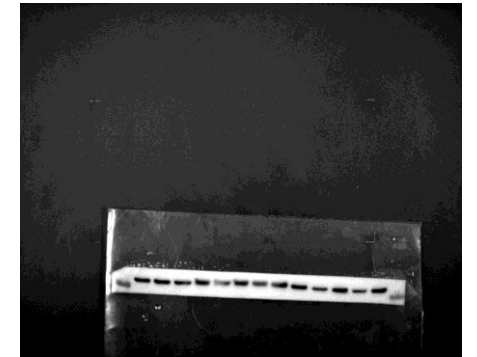
merged



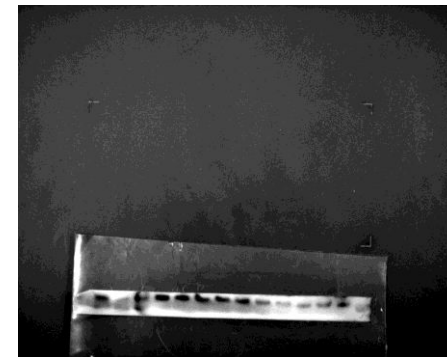
INHBA(A5232)
45KD
R
repeat2



GAPDH (6004-1-Ig) ,
37KD, M



INHBA(A5232)
45KD
R
repeat3



GAPDH (6004-1-Ig) ,
37KD, M

