

Supporting Information

Bacterial Lipodepsipeptides, Some their Derivatives and Cyclic Dipeptides as Potential Agents to Biocontrol Pathogenic Bacteria and Fungi of Agrarian Plants

Stefany Castaldi, Alessio Cimmino, Marco Masi, Antonio Evidente*

Index

Figure S1. ^1H NMR spectrum of tolaasin I in CD_3OD at 500 MHz

Figure S2. ^1H NMR spectrum of hexacetyltolaasin I in CD_3OD at 500 MHz

Figure S3. ESIMS spectrum of hexacetyltolaasin I

Figure S4. ^1H NMR spectrum of tetrahydrotolaasin I in CD_3OD at 500 MHz

Figure S5. ESIMS spectrum of tetrahydrotolaasin I

Figure S6. ^1H NMR spectrum of WLIP in CD_3OD at 500 MHz

Figure S7. ^1H NMR spectrum of WLIP methyl ester in CD_3OD at 500 MHz

Figure S8. ESIMS spectrum of WLIP methyl ester

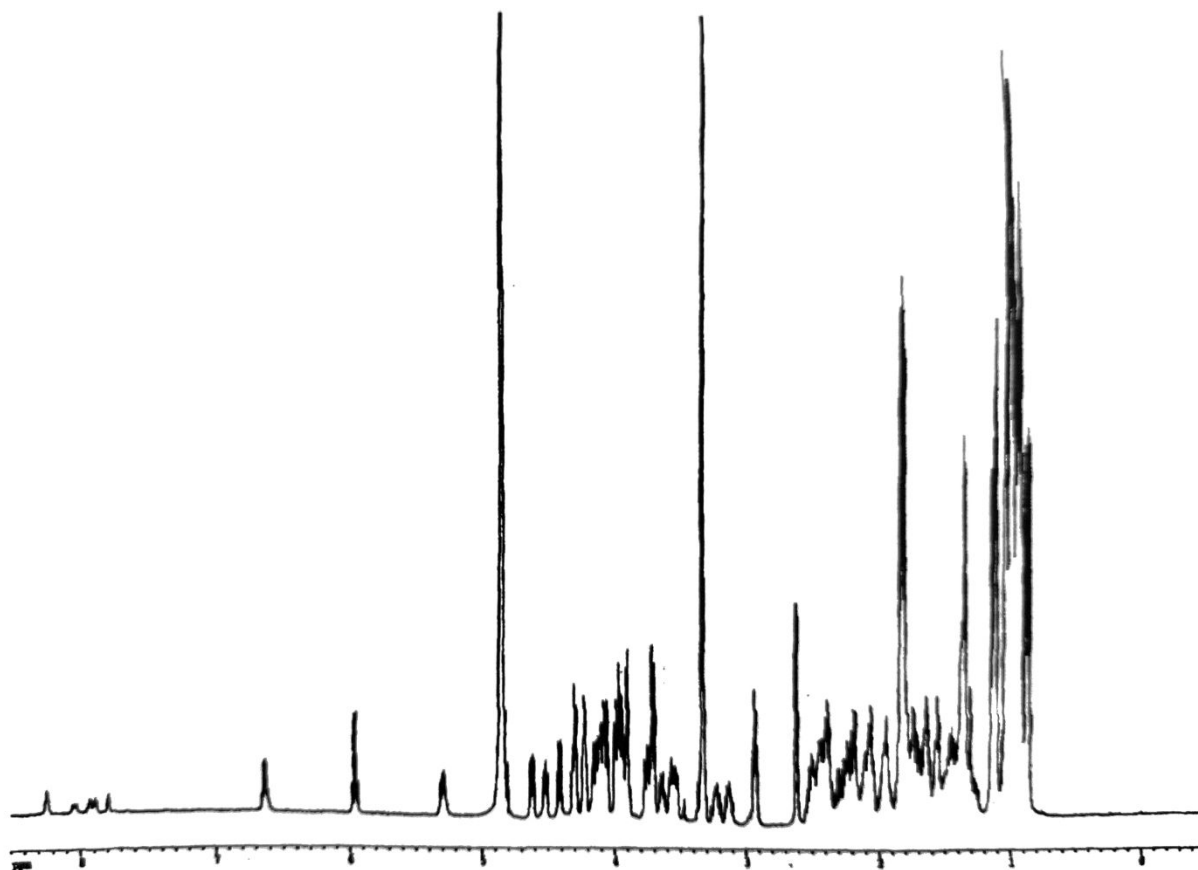


Figure S1. ¹H NMR spectrum of tolaasin I in CD₃OD at 500 MHz.

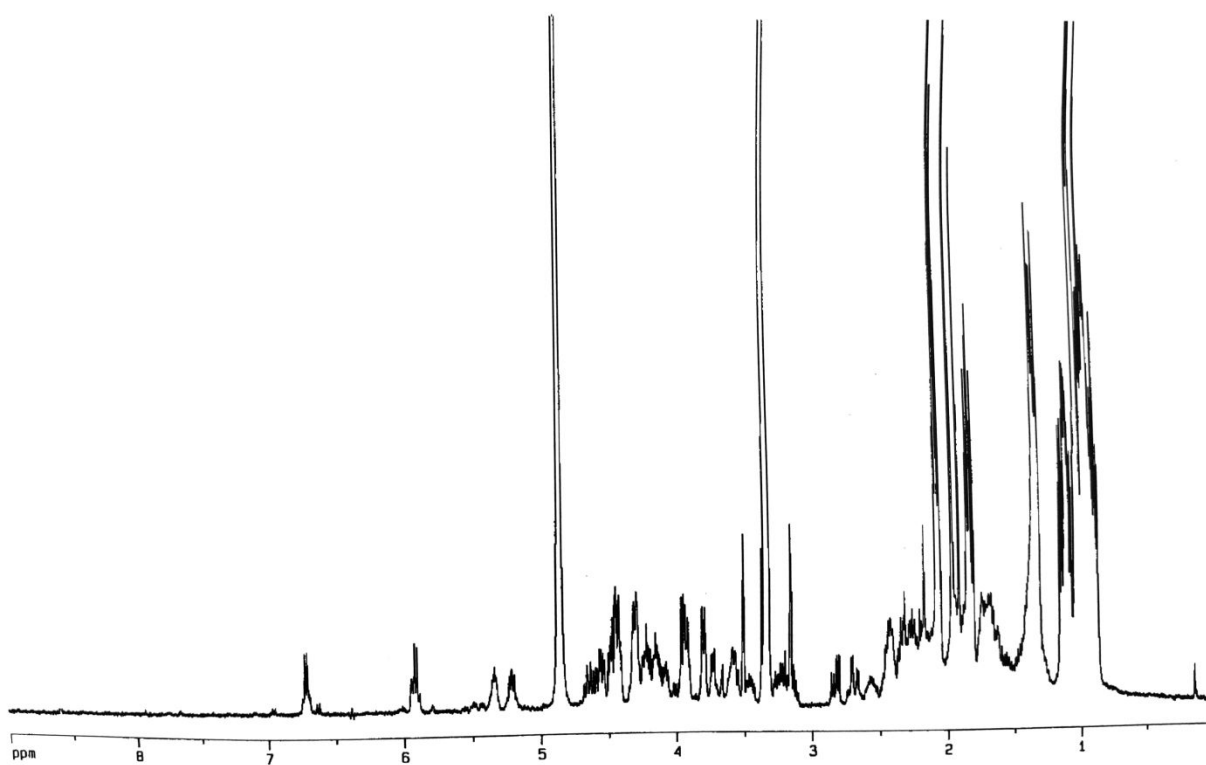


Figure S2. ¹H NMR spectrum of hexacetyltolaasin I in CD₃OD at 500 MHz.

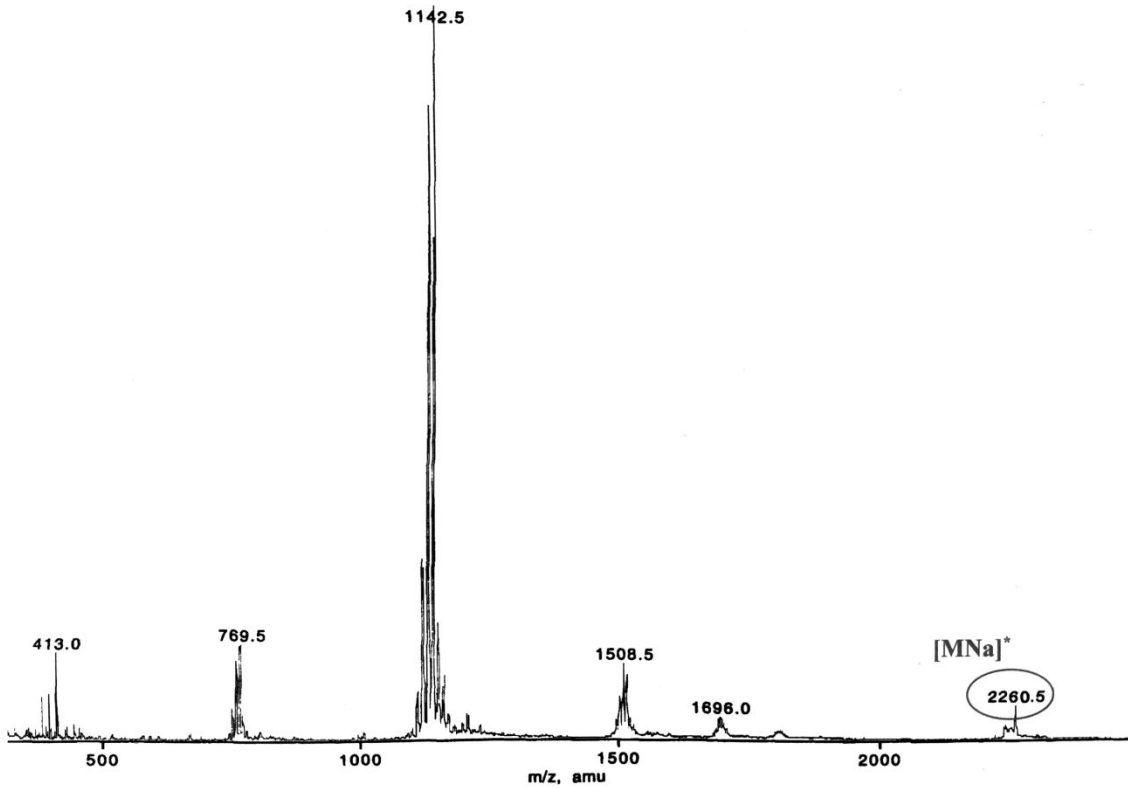


Figure S3. ESIMS spectrum of hexacetyltolaasin I.

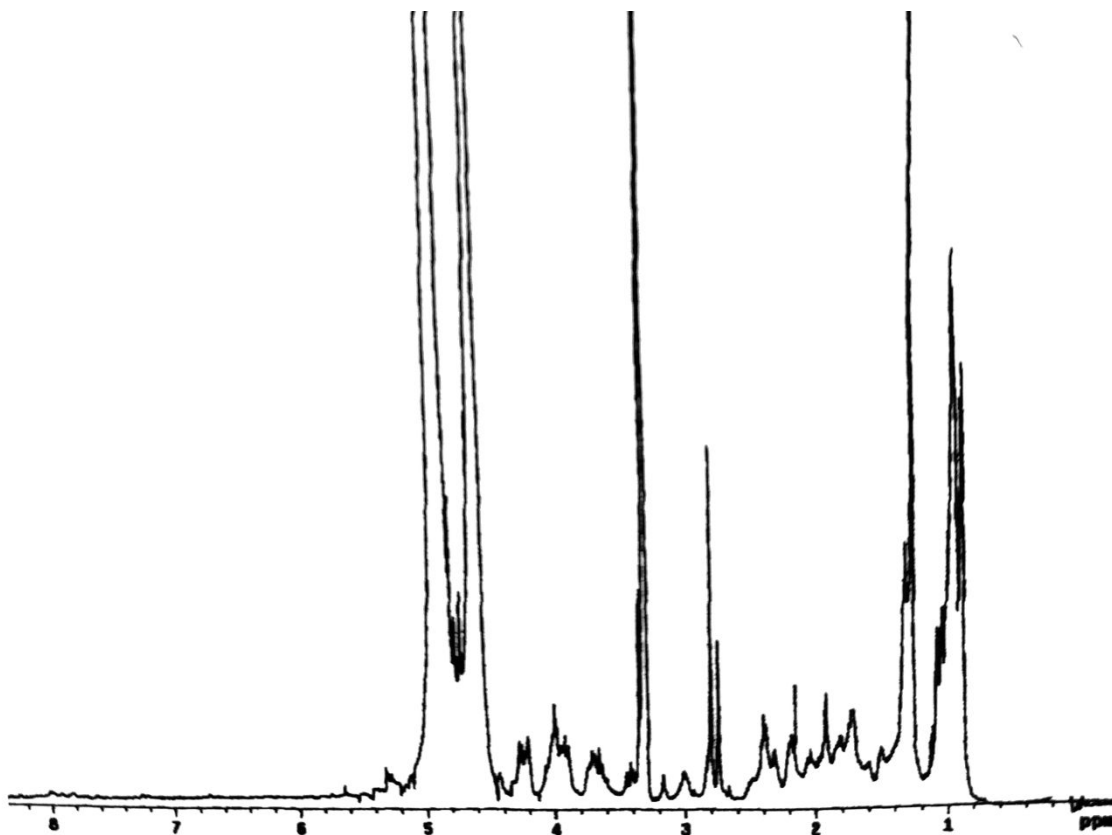


Figure S4. ¹H NMR spectrum of tetrahydrotolaasin I in CD₃OD at 500 MHz.

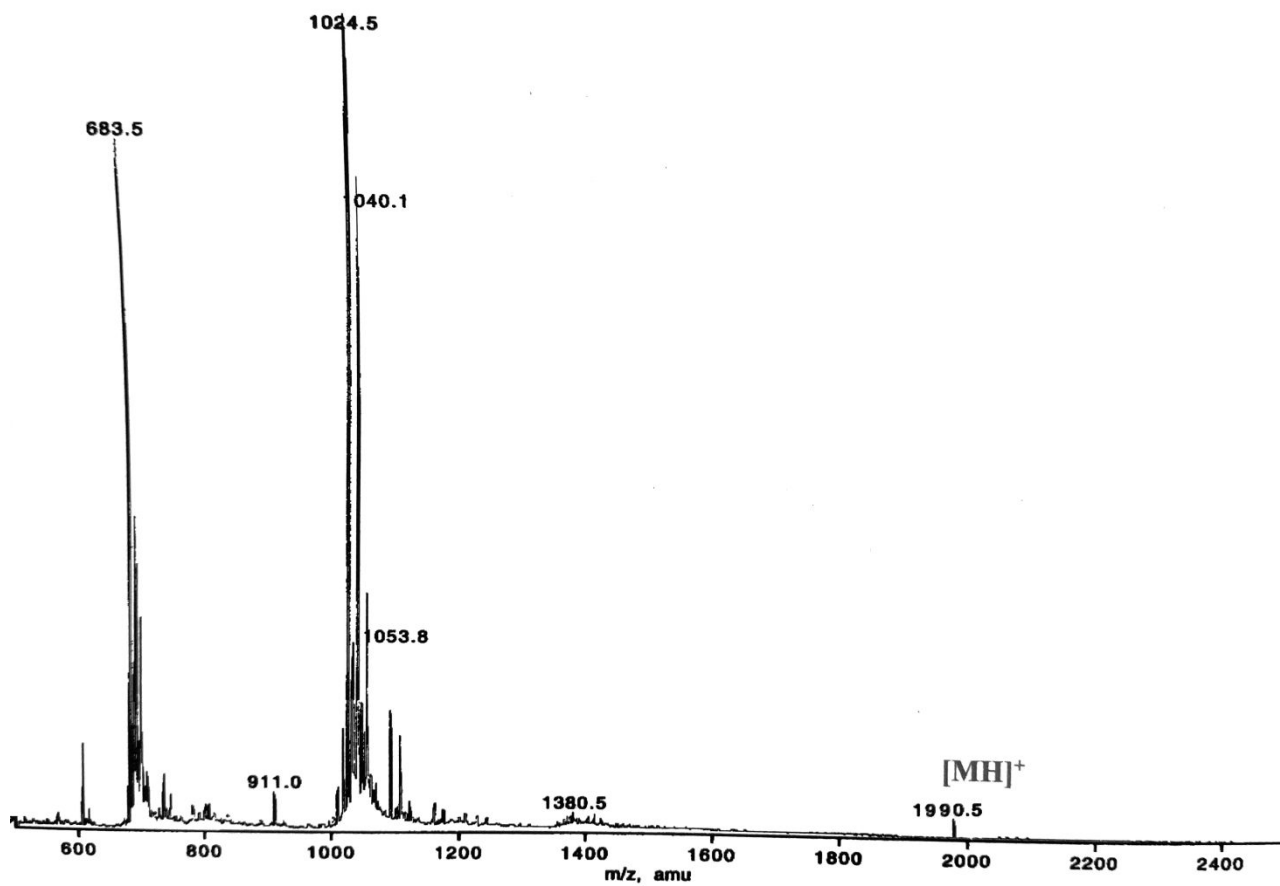


Figure S5. ESIMS spectrum of tetrahydrotolassin I.

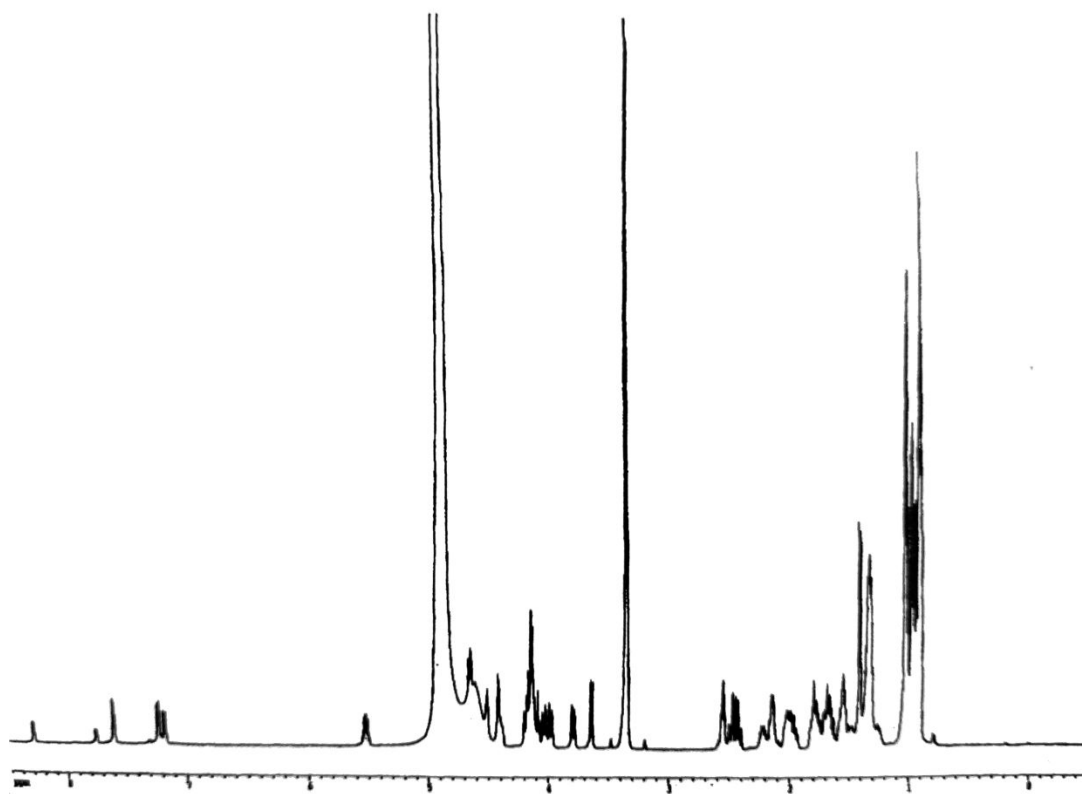


Figure S6. 1H NMR spectrum of WLIP in CD_3OD at 500 MHz.

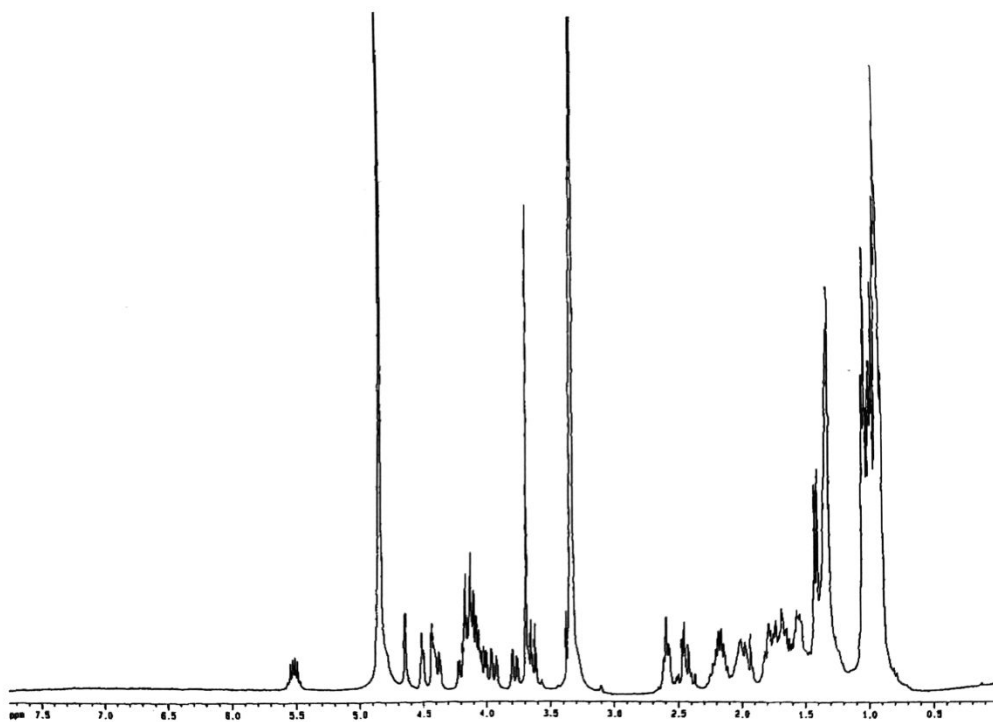


Figure S7. ^1H NMR spectrum of WLIP methyl ester in CD_3OD at 500 MHz.

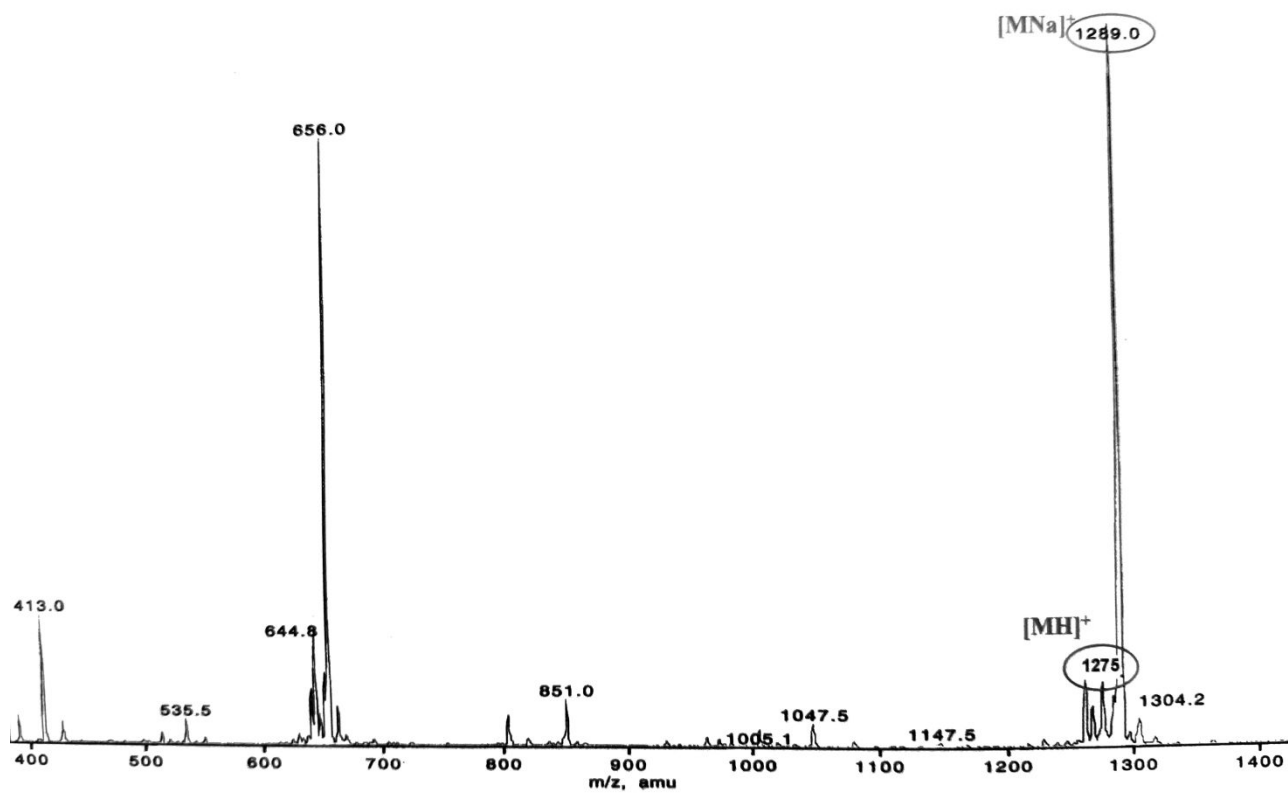


Figure S8. ESIMS spectrum of WLIP methyl ester.