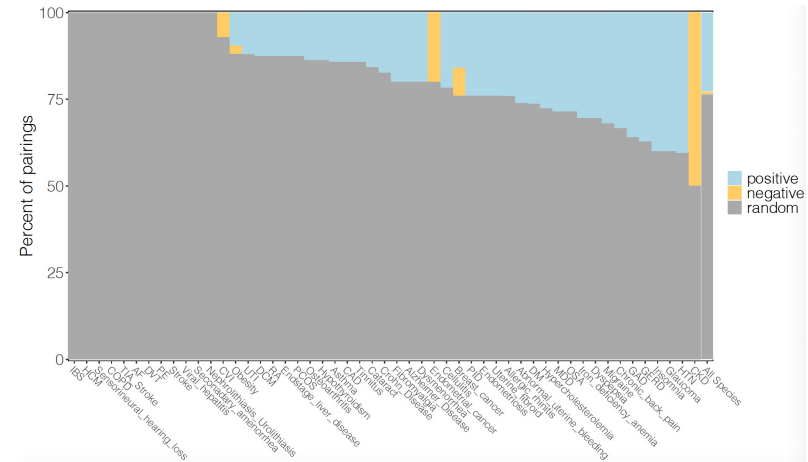


Supplementary Figure 1

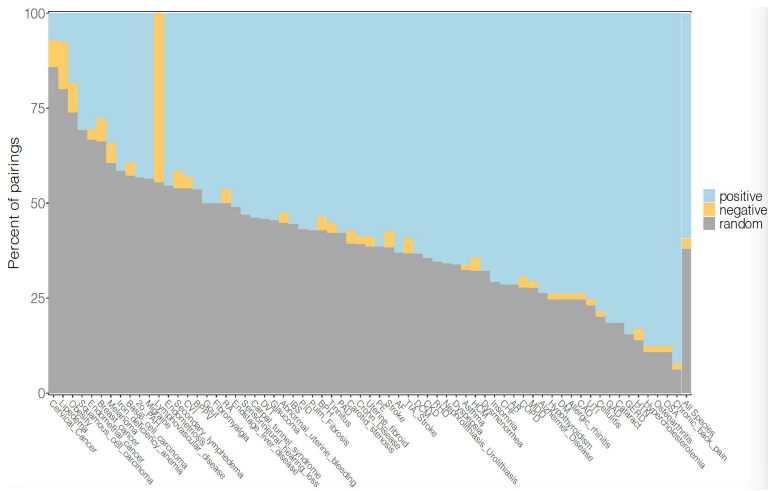
a

Control



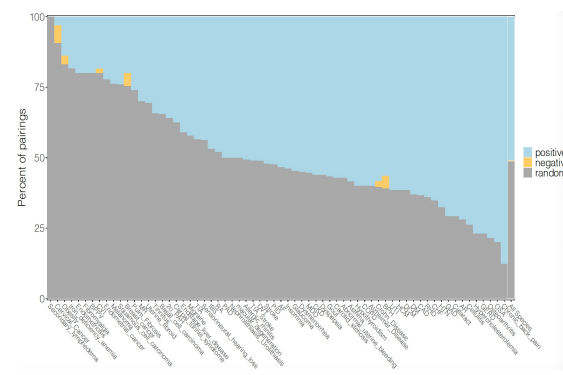
b

Lymphatic



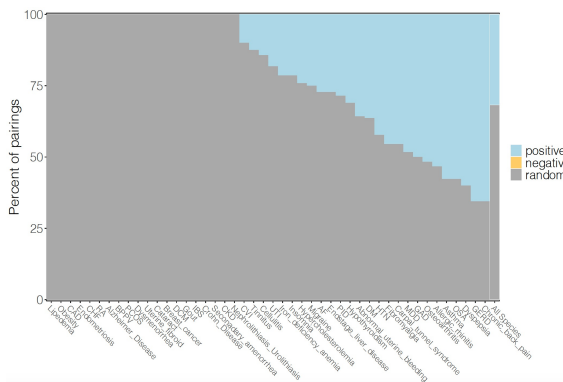
c

Secondary lymphedema



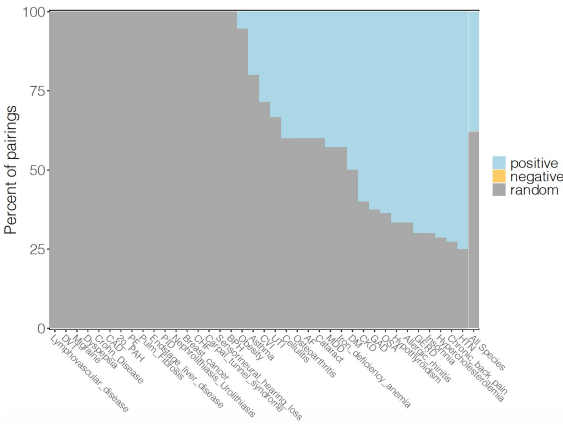
d

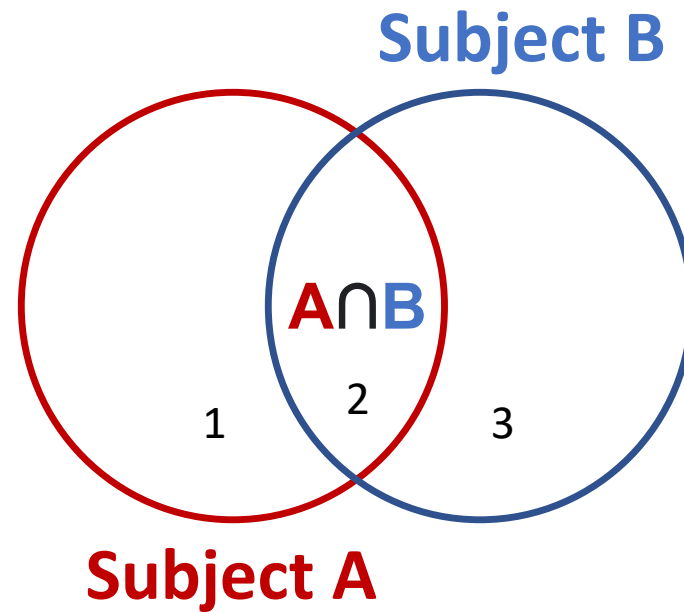
Lipedema



e

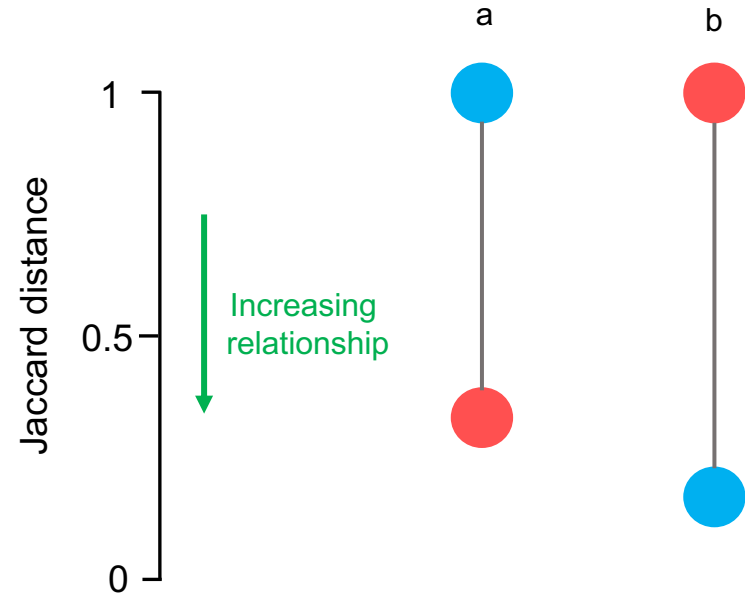
Lymphovascular





$$\text{Jaccard Distance (A,B)} = 1 - \frac{\text{Number of comorbidities found in both Subject A and Subject B (2)}}{\text{Total number of comorbidities found in either Subject A or Subject B (1+2+3)}}$$

Supplementary Figure 3



a: A disease pair that does not show co-occurrence in control group (blue circle, Jaccard distance=1), but this same disease pair shows co-occurrence in the lymphatic group (red circle).

b: A disease pair that does not show co-occurrence in lymphatic group (red circle, Jaccard distance=1), but this same disease pair shows co-occurrence in the control group (blue circle).