

Appendix
Change in Gender on Record and Transgender Adults' Mental or Behavioral Health
Yee et al.

Appendix Table 1. Sex-Specific Care Diagnosis and Procedure Codes

Code system	Codes
Female sex-specific care: Hysterectomy	
CPT/HCPCS	01962, 58150, 58152, 58180, 58200, 58210, 58240, 58260, 58262, 58263, 58267, 58270, 58275, 58280, 58285, 58290, 58291, 58292, 58293, 58294, 58541, 58542, 58543, 58544, 58550, 58552, 58553, 58554, 58570, 58571, 58572, 58573, 58953, 58954, 00944
ICD10CM	N993
Female sex-specific care: Ovary/fallopian tube-related	
CPT/HCPCS	0003U, 0058T, 0103U, 0132U, 0567T, 0568T, 58150, 58152, 58600, 58605, 58611, 58615, 58660, 58661, 58662, 58670, 58671, 58672, 58673, 58679, 58700, 58720, 58740, 58750, 58752, 58760, 58770, 58800, 58805, 58820, 58822, 58825, 58900, 58920, 58925, 58940, 58943, 58950, 58951, 58952, 58953, 58954, 58956, 58957, 58958, 58960, 74740, 74742, 81500, 81503, 00952
ICD9CM	2564, 6208
ICD10CM	C561, C562, C569, C5700, C5701, C5702, C7960, C7961, C7962, D270, D271, D279, D3910, D3911, D3912, E282, E2839, E288, E289, E8940, E8941, N7001, N7002, N7003, N7011, N7012, N7013, N7091, N7092, N7093, N801, N802, N8300, N8301, N8302, N8310, N8311, N8312, N83201, N83202, N83209, N83291, N83292, N83299, N83311, N83312, N83319, N83321, N83322, N83329, N83331, N83332, N83339, N8340, N8341, N8342, N83511, N83512, N83519, N83521, N83522, N83529, N8353, N838, N839, N981, N9983, O00201, O00202, O00209, O00211, O00212, O00219, O23521, O23522, O23523, O23529, Q5001, Q5002, Q501, Q502, Q5031, Q5032, Q5039, Q504, Q506, S37401A, S37401D, S37401S, S37402A, S37402D, S37402S, S37409A, S37409D, S37409S, S37421A, S37421D, S37421S, S37422A, S37422D, S37422S, S37429A, S37429D, S37429S, S37431A, S37431D, S37431S, S37432A, S37432D, S37432S, S37439A, S37439D, S37439S, S37491A, S37491D, S37491S, S37492A, S37492D, S37492S, S37499A, S37499D, S37499S, S37501A, S37501D, S37501S, S37502A, S37502D, S37502S, S37509A, S37509D, S37509S, S37511A, S37511D, S37511S, S37512A, S37512D, S37512S, S37519A, S37519D, S37519S, S37521A, S37521D, S37521S, S37522A, S37522D, S37522S, S37529A, S37529D, S37529S, S37531A, S37531D, S37531S, S37532A, S37532D, S37532S, S37539A, S37539D, S37539S, S37591A, S37591D, S37591S, S37592A, S37592D, S37592S, S37599A, S37599D, S37599S, Z1273, Z1502, Z4002, Z4003, Z8543, Z90721, Z90722
ICD10PCS	0U15075, 0U15076, 0U15079, 0U150J5, 0U150J6, 0U150J9, 0U150K5, 0U150K6, 0U150K9, 0U150Z5, 0U150Z6, 0U150Z9, 0U15475, 0U15476, 0U15479, 0U154J5, 0U154J6, 0U154J9, 0U154K5, 0U154K6, 0U154K9, 0U154Z5, 0U154Z6, 0U154Z9, 0U16075, 0U16076, 0U16079, 0U160J5, 0U160J6, 0U160J9, 0U160K5, 0U160K6, 0U160K9, 0U160Z5, 0U160Z6, 0U160Z9, 0U16475, 0U16476, 0U16479, 0U164J5, 0U164J6, 0U164J9, 0U164K5, 0U164K6, 0U164K9, 0U164Z5, 0U164Z6, 0U164Z9, 0U23X0Z,

Appendix
Change in Gender on Record and Transgender Adults' Mental or Behavioral Health
Yee et al.

0U23XYZ, 0U28X0Z, 0U28XYZ, 0U500ZZ, 0U503ZZ, 0U504ZZ, 0U508ZZ,
0U510ZZ, 0U513ZZ, 0U514ZZ, 0U518ZZ, 0U520ZZ, 0U523ZZ, 0U524ZZ,
0U528ZZ, 0U550ZZ, 0U553ZZ, 0U554ZZ, 0U557ZZ, 0U558ZZ, 0U560ZZ,
0U563ZZ, 0U564ZZ, 0U567ZZ, 0U568ZZ, 0U570ZZ, 0U573ZZ, 0U574ZZ,
0U577ZZ, 0U578ZZ, 0U750DZ, 0U750ZZ, 0U753DZ, 0U753ZZ, 0U754DZ,
0U754ZZ, 0U757DZ, 0U757ZZ, 0U758DZ, 0U758ZZ, 0U760DZ, 0U760ZZ,
0U763DZ, 0U763ZZ, 0U764DZ, 0U764ZZ, 0U767DZ, 0U767ZZ, 0U768DZ,
0U768ZZ, 0U770DZ, 0U770ZZ, 0U773DZ, 0U773ZZ, 0U774DZ, 0U774ZZ,
0U777DZ, 0U777ZZ, 0U778DZ, 0U778ZZ, 0U800ZZ, 0U803ZZ, 0U804ZZ,
0U810ZZ, 0U813ZZ, 0U814ZZ, 0U820ZZ, 0U823ZZ, 0U824ZZ, 0U9000Z,
0U900ZX, 0U900ZZ, 0U9030Z, 0U903ZX, 0U903ZZ, 0U9040Z, 0U904ZX,
0U904ZZ, 0U9080Z, 0U908ZX, 0U908ZZ, 0U90XZZ, 0U9100Z, 0U910ZX,
0U910ZZ, 0U9130Z, 0U913ZX, 0U913ZZ, 0U9140Z, 0U914ZX, 0U914ZZ,
0U9180Z, 0U918ZX, 0U918ZZ, 0U91XZZ, 0U9200Z, 0U920ZX, 0U920ZZ,
0U9230Z, 0U923ZX, 0U923ZZ, 0U9240Z, 0U924ZX, 0U924ZZ, 0U9280Z,
0U928ZX, 0U928ZZ, 0U92XZZ, 0U9500Z, 0U950ZX, 0U950ZZ, 0U9530Z,
0U953ZX, 0U953ZZ, 0U9540Z, 0U954ZX, 0U954ZZ, 0U9570Z, 0U957ZX,
0U957ZZ, 0U9580Z, 0U958ZX, 0U958ZZ, 0U9600Z, 0U960ZX, 0U960ZZ,
0U9630Z, 0U963ZX, 0U963ZZ, 0U9640Z, 0U964ZX, 0U964ZZ, 0U9670Z,
0U967ZX, 0U967ZZ, 0U9680Z, 0U968ZX, 0U968ZZ, 0U9700Z, 0U970ZX,
0U970ZZ, 0U9730Z, 0U973ZX, 0U973ZZ, 0U9740Z, 0U974ZX, 0U974ZZ,
0U9770Z, 0U977ZX, 0U977ZZ, 0U9780Z, 0U978ZX, 0U978ZZ, 0UB00ZX,
0UB00ZZ, 0UB03ZX, 0UB03ZZ, 0UB04ZX, 0UB04ZZ, 0UB07ZX,
0UB07ZZ, 0UB08ZX, 0UB08ZZ, 0UB10ZX, 0UB10ZZ, 0UB13ZX,
0UB13ZZ, 0UB14ZX, 0UB14ZZ, 0UB17ZX, 0UB17ZZ, 0UB18ZX,
0UB18ZZ, 0UB20ZX, 0UB20ZZ, 0UB23ZX, 0UB23ZZ, 0UB24ZX,
0UB24ZZ, 0UB27ZX, 0UB27ZZ, 0UB28ZX, 0UB28ZZ, 0UB50ZX,
0UB50ZZ, 0UB53ZX, 0UB53ZZ, 0UB54ZX, 0UB54ZZ, 0UB57ZX,
0UB57ZZ, 0UB58ZX, 0UB58ZZ, 0UB60ZX, 0UB60ZZ, 0UB63ZX,
0UB63ZZ, 0UB64ZX, 0UB64ZZ, 0UB67ZX, 0UB67ZZ, 0UB68ZX,
0UB68ZZ, 0UB70ZX, 0UB70ZZ, 0UB73ZX, 0UB73ZZ, 0UB74ZX,
0UB74ZZ, 0UB77ZX, 0UB77ZZ, 0UB78ZX, 0UB78ZZ, 0UC00ZZ,
0UC03ZZ, 0UC04ZZ, 0UC08ZZ, 0UC10ZZ, 0UC13ZZ, 0UC14ZZ,
0UC18ZZ, 0UC20ZZ, 0UC23ZZ, 0UC24ZZ, 0UC28ZZ, 0UC50ZZ,
0UC53ZZ, 0UC54ZZ, 0UC57ZZ, 0UC58ZZ, 0UC60ZZ, 0UC63ZZ,
0UC64ZZ, 0UC67ZZ, 0UC68ZZ, 0UC70ZZ, 0UC73ZZ, 0UC74ZZ,
0UC77ZZ, 0UC78ZZ, 0UF50ZZ, 0UF53ZZ, 0UF54ZZ, 0UF57ZZ, 0UF58ZZ,
0UF5XZZ, 0UF60ZZ, 0UF63ZZ, 0UF64ZZ, 0UF67ZZ, 0UF68ZZ, 0UF6XZZ,
0UF70ZZ, 0UF73ZZ, 0UF74ZZ, 0UF77ZZ, 0UF78ZZ, 0UF7XZZ, 0UH303Z,
0UH30YZ, 0UH333Z, 0UH33YZ, 0UH343Z, 0UH34YZ, 0UH37YZ,
0UH38YZ, 0UH803Z, 0UH80YZ, 0UH833Z, 0UH83YZ, 0UH843Z,
0UH84YZ, 0UH873Z, 0UH87YZ, 0UH883Z, 0UH88YZ, 0UJ30ZZ, 0UJ33ZZ,
0UJ34ZZ, 0UJ38ZZ, 0UJ3XZZ, 0UJ80ZZ, 0UJ83ZZ, 0UJ84ZZ, 0UJ87ZZ,
0UJ88ZZ, 0UJ8XZZ, 0UL50CZ, 0UL50DZ, 0UL50ZZ, 0UL53CZ, 0UL53DZ,
0UL53ZZ, 0UL54CZ, 0UL54DZ, 0UL54ZZ, 0UL57DZ, 0UL57ZZ,
0UL58DZ, 0UL58ZZ, 0UL60CZ, 0UL60DZ, 0UL60ZZ, 0UL63CZ,

Appendix
Change in Gender on Record and Transgender Adults' Mental or Behavioral Health
Yee et al.

0UL63DZ, 0UL63ZZ, 0UL64CZ, 0UL64DZ, 0UL64ZZ, 0UL67DZ,
0UL67ZZ, 0UL68DZ, 0UL68ZZ, 0UL70CZ, 0UL70DZ, 0UL70ZZ,
0UL73CZ, 0UL73DZ, 0UL73ZZ, 0UL74CZ, 0UL74DZ, 0UL74ZZ,
0UL77DZ, 0UL77ZZ, 0UL78DZ, 0UL78ZZ, 0UM00ZZ, 0UM04ZZ,
0UM10ZZ, 0UM14ZZ, 0UM20ZZ, 0UM24ZZ, 0UM50ZZ, 0UM54ZZ,
0UM60ZZ, 0UM64ZZ, 0UM70ZZ, 0UM74ZZ, 0UN00ZZ, 0UN03ZZ,
0UN04ZZ, 0UN08ZZ, 0UN10ZZ, 0UN13ZZ, 0UN14ZZ, 0UN18ZZ,
0UN20ZZ, 0UN23ZZ, 0UN24ZZ, 0UN28ZZ, 0UN50ZZ, 0UN53ZZ,
0UN54ZZ, 0UN57ZZ, 0UN58ZZ, 0UN60ZZ, 0UN63ZZ, 0UN64ZZ,
0UN67ZZ, 0UN68ZZ, 0UN70ZZ, 0UN73ZZ, 0UN74ZZ, 0UN77ZZ,
0UN78ZZ, 0UP300Z, 0UP303Z, 0UP30YZ, 0UP330Z, 0UP333Z, 0UP33YZ,
0UP340Z, 0UP343Z, 0UP34YZ, 0UP37YZ, 0UP38YZ, 0UP3X0Z, 0UP3X3Z,
0UP800Z, 0UP803Z, 0UP807Z, 0UP80CZ, 0UP80DZ, 0UP80JZ, 0UP80KZ,
0UP80YZ, 0UP830Z, 0UP833Z, 0UP837Z, 0UP83CZ, 0UP83DZ, 0UP83JZ,
0UP83KZ, 0UP83YZ, 0UP840Z, 0UP843Z, 0UP847Z, 0UP84CZ, 0UP84DZ,
0UP84JZ, 0UP84KZ, 0UP84YZ, 0UP870Z, 0UP873Z, 0UP877Z, 0UP87CZ,
0UP87DZ, 0UP87JZ, 0UP87KZ, 0UP87YZ, 0UP880Z, 0UP883Z, 0UP887Z,
0UP88CZ, 0UP88DZ, 0UP88JZ, 0UP88KZ, 0UP88YZ, 0UP8X0Z, 0UP8X3Z,
0UP8XDZ, 0UQ00ZZ, 0UQ03ZZ, 0UQ04ZZ, 0UQ08ZZ, 0UQ10ZZ,
0UQ13ZZ, 0UQ14ZZ, 0UQ18ZZ, 0UQ20ZZ, 0UQ23ZZ, 0UQ24ZZ,
0UQ28ZZ, 0UQ50ZZ, 0UQ53ZZ, 0UQ54ZZ, 0UQ57ZZ, 0UQ58ZZ,
0UQ60ZZ, 0UQ63ZZ, 0UQ64ZZ, 0UQ67ZZ, 0UQ68ZZ, 0UQ70ZZ,
0UQ73ZZ, 0UQ74ZZ, 0UQ77ZZ, 0UQ78ZZ, 0US00ZZ, 0US04ZZ,
0US08ZZ, 0US10ZZ, 0US14ZZ, 0US18ZZ, 0US20ZZ, 0US24ZZ, 0US28ZZ,
0US50ZZ, 0US54ZZ, 0US58ZZ, 0US60ZZ, 0US64ZZ, 0US68ZZ, 0US70ZZ,
0US74ZZ, 0US78ZZ, 0UT00ZZ, 0UT04ZZ, 0UT07ZZ, 0UT08ZZ, 0UT0FZZ,
0UT10ZZ, 0UT14ZZ, 0UT17ZZ, 0UT18ZZ, 0UT1FZZ, 0UT20ZZ, 0UT24ZZ,
0UT27ZZ, 0UT28ZZ, 0UT2FZZ, 0UT50ZZ, 0UT54ZZ, 0UT57ZZ, 0UT58ZZ,
0UT5FZZ, 0UT60ZZ, 0UT64ZZ, 0UT67ZZ, 0UT68ZZ, 0UT6FZZ, 0UT70ZZ,
0UT74ZZ, 0UT77ZZ, 0UT78ZZ, 0UT7FZZ, 0UU507Z, 0UU50JZ, 0UU50KZ,
0UU547Z, 0UU54JZ, 0UU54KZ, 0UU577Z, 0UU57JZ, 0UU57KZ, 0UU587Z,
0UU58JZ, 0UU58KZ, 0UU607Z, 0UU60JZ, 0UU60KZ, 0UU647Z, 0UU64JZ,
0UU64KZ, 0UU677Z, 0UU67JZ, 0UU67KZ, 0UU687Z, 0UU68JZ,
0UU68KZ, 0UU707Z, 0UU70JZ, 0UU70KZ, 0UU747Z, 0UU74JZ,
0UU74KZ, 0UU777Z, 0UU77JZ, 0UU77KZ, 0UU787Z, 0UU78JZ,
0UU78KZ, 0UW300Z, 0UW303Z, 0UW30YZ, 0UW330Z, 0UW333Z,
0UW33YZ, 0UW340Z, 0UW343Z, 0UW34YZ, 0UW37YZ, 0UW38YZ,
0UW3X0Z, 0UW3X3Z, 0UW800Z, 0UW803Z, 0UW807Z, 0UW80CZ,
0UW80DZ, 0UW80JZ, 0UW80KZ, 0UW80YZ, 0UW830Z, 0UW833Z,
0UW837Z, 0UW83CZ, 0UW83DZ, 0UW83JZ, 0UW83KZ, 0UW83YZ,
0UW840Z, 0UW843Z, 0UW847Z, 0UW84CZ, 0UW84DZ, 0UW84JZ,
0UW84KZ, 0UW84YZ, 0UW870Z, 0UW873Z, 0UW877Z, 0UW87CZ,
0UW87DZ, 0UW87JZ, 0UW87KZ, 0UW87YZ, 0UW880Z, 0UW883Z,
0UW887Z, 0UW88CZ, 0UW88DZ, 0UW88JZ, 0UW88KZ, 0UW88YZ,
0UW8X0Z, 0UW8X3Z, 0UW8X7Z, 0UW8XCZ, 0UW8XDZ, 0UW8XJZ,
0UW8XKZ, 0UY00Z0, 0UY00Z1, 0UY00Z2, 0UY10Z0, 0UY10Z1,

Appendix
Change in Gender on Record and Transgender Adults' Mental or Behavioral Health
Yee et al.

0UY10ZZ, BU000ZZ, BU001ZZ, BU00YZZ, BU010ZZ, BU011ZZ, BU01YZZ, BU020ZZ, BU021ZZ, BU02YZZ, BU080ZZ, BU081ZZ, BU08YZZ, BU100ZZ, BU101ZZ, BU10YZZ, BU10ZZZ, BU110ZZ, BU111ZZ, BU11YZZ, BU11ZZZ, BU120ZZ, BU121ZZ, BU12YZZ, BU12ZZZ, BU180ZZ, BU181ZZ, BU18YZZ, BU18ZZZ, BU33Y0Z, BU33YZZ, BU33ZZZ, BU34Y0Z, BU34YZZ, BU34ZZZ, BU35Y0Z, BU35YZZ, BU35ZZZ, BU3CY0Z, BU3CYZZ, BU3CZZZ, BU40YZZ, BU40ZZZ, BU41YZZ, BU41ZZZ, BU42YZZ, BU42ZZZ, BU43YZZ, BU43ZZZ, BU44YZZ, BU44ZZZ, BU45YZZ, BU45ZZZ, BU4CYZZ, BU4CZZZ, DU000ZZ, DU001ZZ, DU002ZZ, DU003Z0, DU003ZZ, DU004ZZ, DU005ZZ, DU006ZZ, DU1097Z, DU1098Z, DU1099Z, DU109BZ, DU109CZ, DU109YZ, DU10B7Z, DU10B8Z, DU10B9Z, DU10BBZ, DU10BCZ, DU10BYZ, DU20DZZ, DU20HZZ, DU20JZZ, DUY07ZZ, DUY08ZZ, DUY0CZZ, DUY0FZZ

Female sex-specific care: Endometrium-related

ICD9CM 6179

ICD10CM C541, D070, N800, N801, N802, N803, N804, N805, N806, N808, N809, N8500, N8501, N8502, O8612, Z1504

ICD10PCS 0U5B0ZZ, 0U5B3ZZ, 0U5B4ZZ, 0U5B7ZZ, 0U5B8ZZ, 0UCB0ZZ, 0UCB3ZZ, 0UCB4ZZ, 0UCB7ZZ, 0UCB8ZZ, 0UDB7ZX, 0UDB7ZZ, 0UDB8ZX, 0UDB8ZZ

Female sex-specific care: Menstruation-related

ICD9CM 6254, 6260, 6261, 6262, 6266, 6268, 6264, 6269, 6254, 6253, 6273

ICD10CM E28310, E28319, F3281, G43821, G43829, G43831, G43839, N920, N921, N922, N924, N925, N926, N943, N9489, N949, N950, N951, N952, N958, N959, Z780

Female sex-specific care: Pregnancy-related

CPT/HCPCS 0127U, 01960, 01961, 01962, 01963, 01965, 01966, 01967, 01968, 01969, 0500F, 0501F, 0502F, 0503F, 58970, 58974, 58976, 59000, 59001, 59012, 59015, 59020, 59025, 59030, 59050, 59051, 59070, 59072, 59074, 59076, 59100, 59120, 59121, 59130, 59135, 59136, 59140, 59150, 59151, 59160, 59200, 59300, 59320, 59325, 59350, 59400, 59409, 59410, 59412, 59414, 59425, 59426, 59430, 59510, 59514, 59515, 59525, 59610, 59612, 59614, 59618, 59620, 59622, 59812, 59820, 59821, 59830, 59840, 59841, 59850, 59851, 59852, 59855, 59856, 59857, 59866, 59870, 59871, 59897, 59898, 59899, 74710, 74712, 74713, 76801, 76802, 76805, 76810, 76811, 76812, 76813, 76814, 76818, 76819, 76820, 76821, 76825, 76826, 76827, 76828, 76885, 76886, 81507, 81508, 81509, 81510, 81511, 81512, 84163, 84830, 89250, 89251, 89253, 89254, 89255, 89258, 89268, 89272, 89281, 89290, 89291, 89337, 89342, 89346, 89352, 89356, 99460, 99461, 99462, 99463, 99464, 99465

ICD9CM 64681, 64890, 64891, 64892, 64893, 64894, 63592, V220, V270, V241

ICD10CM C58, D392, F530, N35021, N468, N469, N470, N923, N96, N970, N971, N972, N978, N979, N982, N983, O0000, O0001, O00101, O00102, O00109, O00111, O00112, O00119, O00201, O00202, O00209, O00211, O00212, O00219, O0080, O0081, O0090, O0091, O021, O0281, O0289, O029, O030,

Appendix
Change in Gender on Record and Transgender Adults' Mental or Behavioral Health
Yee et al.

O031, O032, O0330, O0331, O0332, O0333, O0334, O0335, O0336, O0337, O0338, O0339, O034, O035, O036, O037, O0380, O0381, O0382, O0383, O0384, O0385, O0386, O0387, O0388, O0389, O039, O045, O046, O047, O0480, O0481, O0482, O0483, O0484, O0485, O0486, O0487, O0488, O0489, O070, O071, O072, O0730, O0731, O0732, O0733, O0734, O0735, O0736, O0737, O0738, O0739, O074, O080, O081, O082, O083, O084, O085, O086, O087, O0881, O0882, O0883, O0889, O089, O0900, O0901, O0902, O0903, O0910, O0911, O0912, O0913, O09211, O09212, O09213, O09219, O09291, O09292, O09293, O09299, O0930, O0931, O0932, O0933, O0940, O0941, O0942, O0943, O09511, O09512, O09513, O09519, O09521, O09522, O09523, O09529, O09611, O09612, O09613, O09619, O09621, O09622, O09623, O09629, O0970, O0971, O0972, O0973, O09811, O09812, O09813, O09819, O09821, O09822, O09823, O09829, O09891, O09892, O09893, O09899, O0990, O0991, O0992, O0993, O09A0, O09A1, O09A2, O09A3, O10011, O10012, O10013, O10019, O1002, O1003, O10111, O10112, O10113, O10119, O1012, O1013, O10211, O10212, O10213, O10219, O1022, O1023, O10311, O10312, O10313, O10319, O1032, O1033, O10411, O10412, O10413, O10419, O1042, O1043, O10911, O10912, O10913, O10919, O1092, O1093, O111, O112, O113, O114, O115, O119, O1200, O1201, O1202, O1203, O1204, O1205, O1210, O1211, O1212, O1213, O1214, O1215, O1220, O1221, O1222, O1223, O1224, O1225, O131, O132, O133, O134, O135, O139, O1400, O1402, O1403, O1404, O1405, O1410, O1412, O1413, O1414, O1415, O1420, O1422, O1423, O1424, O1425, O1490, O1492, O1493, O1494, O1495, O1500, O1502, O1503, O151, O152, O161, O162, O163, O164, O165, O169, O200, O208, O209, O210, O211, O212, O218, O219, O2200, O2201, O2202, O2203, O2210, O2211, O2212, O2213, O2220, O2221, O2222, O2223, O2230, O2231, O2232, O2233, O2240, O2241, O2242, O2243, O2250, O2251, O2252, O2253, O228X1, O228X2, O228X3, O228X9, O2290, O2291, O2292, O2293, O2300, O2301, O2302, O2303, O2310, O2311, O2312, O2313, O2320, O2321, O2322, O2323, O2330, O2331, O2332, O2333, O2340, O2341, O2342, O2343, O23511, O23512, O23513, O23519, O23521, O23522, O23523, O23529, O23591, O23592, O23593, O23599, O2390, O2391, O2392, O2393, O24011, O24012, O24013, O24019, O2402, O2403, O24111, O24112, O24113, O24119, O2412, O2413, O24311, O24312, O24313, O24319, O2432, O2433, O24410, O24414, O24415, O24419, O24420, O24424, O24425, O24429, O24430, O24434, O24435, O24439, O24811, O24812, O24813, O24819, O2482, O2483, O24911, O24912, O24913, O24919, O2492, O2493, O2510, O2511, O2512, O2513, O252, O253, O2600, O2601, O2602, O2603, O2610, O2611, O2612, O2613, O2620, O2621, O2622, O2623, O2630, O2631, O2632, O2633, O2640, O2641, O2642, O2643, O2650, O2651, O2652, O2653, O26611, O26612, O26613, O26619, O2662, O2663, O26711, O26712, O26713, O26719, O2672, O2673, O26811, O26812, O26813, O26819, O26821, O26822, O26823, O26829, O26831, O26832, O26833, O26839, O26841, O26842, O26843, O26849, O26851, O26852, O26853, O26859, O2686, O26872, O26873, O26879, O26891, O26892, O26893, O26899, O2690,

Appendix
Change in Gender on Record and Transgender Adults' Mental or Behavioral Health
Yee et al.

O2691, O2692, O2693, O280, O281, O282, O283, O284, O285, O288, O289,
O29011, O29012, O29013, O29019, O29021, O29022, O29023, O29029,
O29091, O29092, O29093, O29099, O29111, O29112, O29113, O29119,
O29121, O29122, O29123, O29129, O29191, O29192, O29193, O29199,
O29211, O29212, O29213, O29219, O29291, O29292, O29293, O29299,
O293X1, O293X2, O293X3, O293X9, O2940, O2941, O2942, O2943,
O295X1, O295X2, O295X3, O295X9, O2960, O2961, O2962, O2963,
O298X1, O298X2, O298X3, O298X9, O2990, O2991, O2992, O2993,
O30001, O30002, O30003, O30009, O30011, O30012, O30013, O30019,
O30021, O30022, O30023, O30029, O30031, O30032, O30033, O30039,
O30041, O30042, O30043, O30049, O30091, O30092, O30093, O30099,
O30101, O30102, O30103, O30109, O30111, O30112, O30113, O30119,
O30121, O30122, O30123, O30129, O30131, O30132, O30133, O30139,
O30191, O30192, O30193, O30199, O30201, O30202, O30203, O30209,
O30211, O30212, O30213, O30219, O30221, O30222, O30223, O30229,
O30231, O30232, O30233, O30239, O30291, O30292, O30293, O30299,
O30801, O30802, O30803, O30809, O30811, O30812, O30813, O30819,
O30821, O30822, O30823, O30829, O30831, O30832, O30833, O30839,
O30891, O30892, O30893, O30899, O3090, O3091, O3092, O3093,
O3100X0, O3100X1, O3100X2, O3100X3, O3100X4, O3100X5, O3100X9,
O3101X0, O3101X1, O3101X2, O3101X3, O3101X4, O3101X5, O3101X9,
O3102X0, O3102X1, O3102X2, O3102X3, O3102X4, O3102X5, O3102X9,
O3103X0, O3103X1, O3103X2, O3103X3, O3103X4, O3103X5, O3103X9,
O3110X0, O3110X1, O3110X2, O3110X3, O3110X4, O3110X5, O3110X9,
O3111X0, O3111X1, O3111X2, O3111X3, O3111X4, O3111X5, O3111X9,
O3112X0, O3112X1, O3112X2, O3112X3, O3112X4, O3112X5, O3112X9,
O3113X0, O3113X1, O3113X2, O3113X3, O3113X4, O3113X5, O3113X9,
O3120X0, O3120X1, O3120X2, O3120X3, O3120X4, O3120X5, O3120X9,
O3121X0, O3121X1, O3121X2, O3121X3, O3121X4, O3121X5, O3121X9,
O3122X0, O3122X1, O3122X2, O3122X3, O3122X4, O3122X5, O3122X9,
O3123X0, O3123X1, O3123X2, O3123X3, O3123X4, O3123X5, O3123X9,
O3130X0, O3130X1, O3130X2, O3130X3, O3130X4, O3130X5, O3130X9,
O3131X0, O3131X1, O3131X2, O3131X3, O3131X4, O3131X5, O3131X9,
O3132X0, O3132X1, O3132X2, O3132X3, O3132X4, O3132X5, O3132X9,
O3133X0, O3133X1, O3133X2, O3133X3, O3133X4, O3133X5, O3133X9,
O318X10, O318X11, O318X12, O318X13, O318X14, O318X15, O318X19,
O318X20, O318X21, O318X22, O318X23, O318X24, O318X25, O318X29,
O318X30, O318X31, O318X32, O318X33, O318X34, O318X35, O318X39,
O318X90, O318X91, O318X92, O318X93, O318X94, O318X95, O318X99,
O320XX0, O320XX1, O320XX2, O320XX3, O320XX4, O320XX5,
O320XX9, O321XX0, O321XX1, O321XX2, O321XX3, O321XX4,
O321XX5, O321XX9, O322XX0, O322XX1, O322XX2, O322XX3,
O322XX4, O322XX5, O322XX9, O323XX0, O323XX1, O323XX2,
O323XX3, O323XX4, O323XX5, O323XX9, O324XX0, O324XX1,
O324XX2, O324XX3, O324XX4, O324XX5, O324XX9, O326XX0,
O326XX1, O326XX2, O326XX3, O326XX4, O326XX5, O326XX9,

Appendix
Change in Gender on Record and Transgender Adults' Mental or Behavioral Health
Yee et al.

O328XX0, O328XX1, O328XX2, O328XX3, O328XX4, O328XX5,
O328XX9, O329XX0, O329XX1, O329XX2, O329XX3, O329XX4,
O329XX5, O329XX9, O330, O331, O332, O333XX0, O333XX1, O333XX2,
O333XX3, O333XX4, O333XX5, O333XX9, O334XX0, O334XX1,
O334XX2, O334XX3, O334XX4, O334XX5, O334XX9, O335XX0,
O335XX1, O335XX2, O335XX3, O335XX4, O335XX5, O335XX9,
O336XX0, O336XX1, O336XX2, O336XX3, O336XX4, O336XX5,
O336XX9, O337XX0, O337XX1, O337XX2, O337XX3, O337XX4,
O337XX5, O337XX9, O338, O339, O3400, O3401, O3402, O3403, O3410,
O3411, O3412, O3413, O34211, O34212, O34219, O3429, O3430, O3431,
O3432, O3433, O3440, O3441, O3442, O3443, O34511, O34512, O34513,
O34519, O34521, O34522, O34523, O34529, O34531, O34532, O34533,
O34539, O34591, O34592, O34593, O34599, O3460, O3461, O3462, O3463,
O3470, O3471, O3472, O3473, O3480, O3481, O3482, O3483, O3490,
O3491, O3492, O3493, O350XX0, O350XX1, O350XX2, O350XX3,
O350XX4, O350XX5, O350XX9, O351XX0, O351XX1, O351XX2,
O351XX3, O351XX4, O351XX5, O351XX9, O352XX0, O352XX1,
O352XX2, O352XX3, O352XX4, O352XX5, O352XX9, O353XX0,
O353XX1, O353XX2, O353XX3, O353XX4, O353XX5, O353XX9,
O354XX0, O354XX1, O354XX2, O354XX3, O354XX4, O354XX5,
O354XX9, O355XX0, O355XX1, O355XX2, O355XX3, O355XX4,
O355XX5, O355XX9, O356XX0, O356XX1, O356XX2, O356XX3,
O356XX4, O356XX5, O356XX9, O357XX0, O357XX1, O357XX2,
O357XX3, O357XX4, O357XX5, O357XX9, O358XX0, O358XX1,
O358XX2, O358XX3, O358XX4, O358XX5, O358XX9, O359XX0,
O359XX1, O359XX2, O359XX3, O359XX4, O359XX5, O359XX9,
O360110, O360111, O360112, O360113, O360114, O360115, O360119,
O360120, O360121, O360122, O360123, O360124, O360125, O360129,
O360130, O360131, O360132, O360133, O360134, O360135, O360139,
O360190, O360191, O360192, O360193, O360194, O360195, O360199,
O360910, O360911, O360912, O360913, O360914, O360915, O360919,
O360920, O360921, O360922, O360923, O360924, O360925, O360929,
O360930, O360931, O360932, O360933, O360934, O360935, O360939,
O360990, O360991, O360992, O360993, O360994, O360995, O360999,
O361110, O361111, O361112, O361113, O361114, O361115, O361119,
O361120, O361121, O361122, O361123, O361124, O361125, O361129,
O361130, O361131, O361132, O361133, O361134, O361135, O361139,
O361190, O361191, O361192, O361193, O361194, O361195, O361199,
O361910, O361911, O361912, O361913, O361914, O361915, O361919,
O361920, O361921, O361922, O361923, O361924, O361925, O361929,
O361930, O361931, O361932, O361933, O361934, O361935, O361939,
O361990, O361991, O361992, O361993, O361994, O361995, O361999,
O3620X0, O3620X1, O3620X2, O3620X3, O3620X4, O3620X5, O3620X9,
O3621X0, O3621X1, O3621X2, O3621X3, O3621X4, O3621X5, O3621X9,
O3622X0, O3622X1, O3622X2, O3622X3, O3622X4, O3622X5, O3622X9,
O3623X0, O3623X1, O3623X2, O3623X3, O3623X4, O3623X5, O3623X9,

Appendix
Change in Gender on Record and Transgender Adults' Mental or Behavioral Health
Yee et al.

O364XX0, O364XX1, O364XX2, O364XX3, O364XX4, O364XX5,
O364XX9, O365110, O365111, O365112, O365113, O365114, O365115,
O365119, O365120, O365121, O365122, O365123, O365124, O365125,
O365129, O365130, O365131, O365132, O365133, O365134, O365135,
O365139, O365190, O365191, O365192, O365193, O365194, O365195,
O365199, O365910, O365911, O365912, O365913, O365914, O365915,
O365919, O365920, O365921, O365922, O365923, O365924, O365925,
O365929, O365930, O365931, O365932, O365933, O365934, O365935,
O365939, O365990, O365991, O365992, O365993, O365994, O365995,
O365999, O3660X0, O3660X1, O3660X2, O3660X3, O3660X4, O3660X5,
O3660X9, O3661X0, O3661X1, O3661X2, O3661X3, O3661X4, O3661X5,
O3661X9, O3662X0, O3662X1, O3662X2, O3662X3, O3662X4, O3662X5,
O3662X9, O3663X0, O3663X1, O3663X2, O3663X3, O3663X4, O3663X5,
O3663X9, O3670X0, O3670X1, O3670X2, O3670X3, O3670X4, O3670X5,
O3670X9, O3671X0, O3671X1, O3671X2, O3671X3, O3671X4, O3671X5,
O3671X9, O3672X0, O3672X1, O3672X2, O3672X3, O3672X4, O3672X5,
O3672X9, O3673X0, O3673X1, O3673X2, O3673X3, O3673X4, O3673X5,
O3673X9, O3680X0, O3680X1, O3680X2, O3680X3, O3680X4, O3680X5,
O3680X9, O368120, O368121, O368122, O368123, O368124, O368125,
O368129, O368130, O368131, O368132, O368133, O368134, O368135,
O368139, O368190, O368191, O368192, O368193, O368194, O368195,
O368199, O368210, O368211, O368212, O368213, O368214, O368215,
O368219, O368220, O368221, O368222, O368223, O368224, O368225,
O368229, O368230, O368231, O368232, O368233, O368234, O368235,
O368239, O368290, O368291, O368292, O368293, O368294, O368295,
O368299, O368310, O368311, O368312, O368313, O368314, O368315,
O368319, O368320, O368321, O368322, O368323, O368324, O368325,
O368329, O368330, O368331, O368332, O368333, O368334, O368335,
O368339, O368390, O368391, O368392, O368393, O368394, O368395,
O368399, O368910, O368911, O368912, O368913, O368914, O368915,
O368919, O368920, O368921, O368922, O368923, O368924, O368925,
O368929, O368930, O368931, O368932, O368933, O368934, O368935,
O368939, O368990, O368991, O368992, O368993, O368994, O368995,
O368999, O3690X0, O3690X1, O3690X2, O3690X3, O3690X4, O3690X5,
O3690X9, O3691X0, O3691X1, O3691X2, O3691X3, O3691X4, O3691X5,
O3691X9, O3692X0, O3692X1, O3692X2, O3692X3, O3692X4, O3692X5,
O3692X9, O3693X0, O3693X1, O3693X2, O3693X3, O3693X4, O3693X5,
O3693X9, O401XX0, O401XX1, O401XX2, O401XX3, O401XX4,
O401XX5, O401XX9, O402XX0, O402XX1, O402XX2, O402XX3,
O402XX4, O402XX5, O402XX9, O403XX0, O403XX1, O403XX2,
O403XX3, O403XX4, O403XX5, O403XX9, O409XX0, O409XX1,
O409XX2, O409XX3, O409XX4, O409XX5, O409XX9, O4100X0,
O4100X1, O4100X2, O4100X3, O4100X4, O4100X5, O4100X9, O4101X0,
O4101X1, O4101X2, O4101X3, O4101X4, O4101X5, O4101X9, O4102X0,
O4102X1, O4102X2, O4102X3, O4102X4, O4102X5, O4102X9, O4103X0,
O4103X1, O4103X2, O4103X3, O4103X4, O4103X5, O4103X9, O411010,

Appendix
Change in Gender on Record and Transgender Adults' Mental or Behavioral Health
Yee et al.

O411011, O411012, O411013, O411014, O411015, O411019, O411020,
O411021, O411022, O411023, O411024, O411025, O411029, O411030,
O411031, O411032, O411033, O411034, O411035, O411039, O411090,
O411091, O411092, O411093, O411094, O411095, O411099, O411210,
O411211, O411212, O411213, O411214, O411215, O411219, O411220,
O411221, O411222, O411223, O411224, O411225, O411229, O411230,
O411231, O411232, O411233, O411234, O411235, O411239, O411290,
O411291, O411292, O411293, O411294, O411295, O411299, O411410,
O411411, O411412, O411413, O411414, O411415, O411419, O411420,
O411421, O411422, O411423, O411424, O411425, O411429, O411430,
O411431, O411432, O411433, O411434, O411435, O411439, O411490,
O411491, O411492, O411493, O411494, O411495, O411499, O418X10,
O418X11, O418X12, O418X13, O418X14, O418X15, O418X19, O418X20,
O418X21, O418X22, O418X23, O418X24, O418X25, O418X29, O418X30,
O418X31, O418X32, O418X33, O418X34, O418X35, O418X39, O418X90,
O418X91, O418X92, O418X93, O418X94, O418X95, O418X99, O4190X0,
O4190X1, O4190X2, O4190X3, O4190X4, O4190X5, O4190X9, O4191X0,
O4191X1, O4191X2, O4191X3, O4191X4, O4191X5, O4191X9, O4192X0,
O4192X1, O4192X2, O4192X3, O4192X4, O4192X5, O4192X9, O4193X0,
O4193X1, O4193X2, O4193X3, O4193X4, O4193X5, O4193X9, O4200,
O42011, O42012, O42013, O42019, O4202, O4210, O42111, O42112,
O42113, O42119, O4212, O4290, O42911, O42912, O42913, O42919, O4292,
O43011, O43012, O43013, O43019, O43021, O43022, O43023, O43029,
O43101, O43102, O43103, O43109, O43111, O43112, O43113, O43119,
O43121, O43122, O43123, O43129, O43191, O43192, O43193, O43199,
O43211, O43212, O43213, O43219, O43221, O43222, O43223, O43229,
O43231, O43232, O43233, O43239, O43811, O43812, O43813, O43819,
O43891, O43892, O43893, O43899, O4390, O4391, O4392, O4393, O4400,
O4401, O4402, O4403, O4410, O4411, O4412, O4413, O4420, O4421,
O4422, O4423, O4430, O4431, O4432, O4433, O4440, O4441, O4442,
O4443, O4450, O4451, O4452, O4453, O45001, O45002, O45003, O45009,
O45011, O45012, O45013, O45019, O45021, O45022, O45023, O45029,
O45091, O45092, O45093, O45099, O458X1, O458X2, O458X3, O458X9,
O4590, O4591, O4592, O4593, O46001, O46002, O46003, O46009, O46011,
O46012, O46013, O46019, O46021, O46022, O46023, O46029, O46091,
O46092, O46093, O46099, O468X1, O468X2, O468X3, O468X9, O4690,
O4691, O4692, O4693, O4700, O4702, O4703, O471, O479, O480, O481,
O6000, O6002, O6003, O6010X0, O6010X1, O6010X2, O6010X3, O6010X4,
O6010X5, O6010X9, O6012X0, O6012X1, O6012X2, O6012X3, O6012X4,
O6012X5, O6012X9, O6013X0, O6013X1, O6013X2, O6013X3, O6013X4,
O6013X5, O6013X9, O6014X0, O6014X1, O6014X2, O6014X3, O6014X4,
O6014X5, O6014X9, O6020X0, O6020X1, O6020X2, O6020X3, O6020X4,
O6020X5, O6020X9, O6022X0, O6022X1, O6022X2, O6022X3, O6022X4,
O6022X5, O6022X9, O6023X0, O6023X1, O6023X2, O6023X3, O6023X4,
O6023X5, O6023X9, O610, O611, O618, O619, O623, O628, O629, O630,
O631, O632, O639, O640XX0, O640XX1, O640XX2, O640XX3, O640XX4,

Appendix
Change in Gender on Record and Transgender Adults' Mental or Behavioral Health
Yee et al.

O640XX5, O640XX9, O641XX0, O641XX1, O641XX2, O641XX3, O641XX4, O641XX5, O641XX9, O642XX0, O642XX1, O642XX2, O642XX3, O642XX4, O642XX5, O642XX9, O643XX0, O643XX1, O643XX2, O643XX3, O643XX4, O643XX5, O643XX9, O644XX0, O644XX1, O644XX2, O644XX3, O644XX4, O644XX5, O644XX9, O645XX0, O645XX1, O645XX2, O645XX3, O645XX4, O645XX5, O645XX9, O648XX0, O648XX1, O648XX2, O648XX3, O648XX4, O648XX5, O648XX9, O649XX0, O649XX1, O649XX2, O649XX3, O649XX4, O649XX5, O649XX9, O650, O651, O652, O653, O654, O655, O658, O659, O660, O661, O662, O663, O6640, O6641, O666, O668, O669, O670, O678, O679, O68, O690XX0, O690XX1, O690XX2, O690XX3, O690XX4, O690XX5, O690XX9, O691XX0, O691XX1, O691XX2, O691XX3, O691XX4, O691XX5, O691XX9, O692XX0, O692XX1, O692XX2, O692XX3, O692XX4, O692XX5, O692XX9, O693XX0, O693XX1, O693XX2, O693XX3, O693XX4, O693XX5, O693XX9, O694XX0, O694XX1, O694XX2, O694XX3, O694XX4, O694XX5, O694XX9, O695XX0, O695XX1, O695XX2, O695XX3, O695XX4, O695XX5, O695XX9, O6981X0, O6981X1, O6981X2, O6981X3, O6981X4, O6981X5, O6981X9, O6982X0, O6982X1, O6982X2, O6982X3, O6982X4, O6982X5, O6982X9, O6989X0, O6989X1, O6989X2, O6989X3, O6989X4, O6989X5, O6989X9, O699XX0, O699XX1, O699XX2, O699XX3, O699XX4, O699XX5, O699XX9, O700, O701, O7020, O7021, O7022, O7023, O703, O704, O709, O7100, O7102, O7103, O711, O712, O721, O722, O723, O730, O731, O740, O741, O742, O743, O744, O745, O746, O747, O748, O749, O750, O751, O752, O753, O755, O7581, O7582, O7589, O759, O76, O770, O771, O778, O779, O80, O82, O8611, O8612, O8613, O8619, O8620, O8621, O8622, O8629, O864, O870, O871, O872, O873, O874, O878, O879, O88011, O88012, O88013, O88019, O8802, O8803, O88111, O88112, O88113, O88119, O8812, O8813, O88211, O88212, O88213, O88219, O8822, O8823, O88311, O88312, O88313, O88319, O8832, O8833, O88811, O88812, O88813, O88819, O8882, O8883, O8901, O8909, O891, O892, O893, O894, O895, O896, O898, O899, O900, O903, O904, O905, O906, O9081, O9089, O909, O91011, O91012, O91013, O91019, O9102, O9103, O91111, O91112, O91113, O91119, O9112, O9113, O91211, O91212, O91213, O91219, O9122, O9123, O92011, O92012, O92013, O92019, O9202, O9203, O92111, O92112, O92113, O92119, O9212, O9213, O9220, O9229, O925, O9270, O9279, O94, O98011, O98012, O98013, O98019, O9802, O9803, O98111, O98112, O98113, O98119, O9812, O9813, O98211, O98212, O98213, O98219, O9822, O9823, O98311, O98312, O98313, O98319, O9832, O9833, O98411, O98412, O98413, O98419, O9842, O9843, O98511, O98512, O98513, O98519, O9852, O9853, O98611, O98612, O98613, O98619, O9862, O9863, O98711, O98712, O98713, O98719, O9872, O9873, O98811, O98812, O98813, O98819, O9882, O9883, O98911, O98912, O98913, O98919, O9892, O9893, O99011, O99012, O99013, O99019, O9902, O9903, O99111, O99112, O99113, O99119, O9912, O9913, O99210, O99211, O99212, O99213, O99214, O99215, O99280, O99281, O99282, O99283, O99284, O99285, O99310, O99311, O99312,

Appendix
Change in Gender on Record and Transgender Adults' Mental or Behavioral Health
Yee et al.

O99313, O99314, O99315, O99320, O99321, O99322, O99323, O99324, O99325, O99330, O99331, O99332, O99333, O99334, O99335, O99340, O99341, O99342, O99343, O99344, O99345, O99350, O99351, O99352, O99353, O99354, O99355, O99411, O99412, O99413, O99419, O9942, O9943, O99511, O99512, O99513, O99519, O9952, O9953, O99611, O99612, O99613, O99619, O9962, O9963, O99711, O99712, O99713, O99719, O9972, O9973, O99810, O99814, O99815, O99820, O99824, O99825, O99830, O99834, O99835, O99840, O99841, O99842, O99843, O99844, O99845, O9989, O9A111, O9A112, O9A113, O9A119, O9A12, O9A13, O9A211, O9A212, O9A213, O9A219, O9A22, O9A23, O9A311, O9A312, O9A313, O9A319, O9A32, O9A33, O9A411, O9A412, O9A413, O9A419, O9A42, O9A43, O9A511, O9A512, O9A513, O9A519, O9A52, O9A53, P546, Q504, Q505, Q516, Z0372, Z0373, Z0374, Z0379, Z1332, Z1441, Z317, Z3181, Z3183, Z331, Z332, Z333, Z3400, Z3401, Z3402, Z3403, Z3480, Z3481, Z3482, Z3483, Z3490, Z3491, Z3492, Z3493, Z360, Z361, Z362, Z363, Z364, Z365, Z3681, Z3682, Z3683, Z3684, Z3685, Z3686, Z3687, Z3688, Z3689, Z368A, Z369, Z370, Z371, Z372, Z373, Z374, Z3750, Z3751, Z3752, Z3753, Z3754, Z3759, Z3760, Z3761, Z3762, Z3763, Z3764, Z3769, Z377, Z379, Z390, Z391, Z392, Z3A00, Z3A01, Z3A08, Z3A09, Z3A10, Z3A11, Z3A12, Z3A13, Z3A14, Z3A15, Z3A16, Z3A17, Z3A18, Z3A19, Z3A20, Z3A21, Z3A22, Z3A23, Z3A24, Z3A25, Z3A26, Z3A27, Z3A28, Z3A29, Z3A30, Z3A31, Z3A32, Z3A33, Z3A34, Z3A35, Z3A36, Z3A37, Z3A38, Z3A39, Z3A40, Z3A41, Z3A42, Z3A49, Z52810, Z52811, Z52812, Z52813, Z52819, Z640, Z641, Z8632, Z8751, Z8759, Z98870

ICD10PCS 102073Z, 10207YZ, 10900Z9, 10900ZA, 10900ZB, 10900ZC, 10900ZD, 10900ZU, 10903Z9, 10903ZA, 10903ZB, 10903ZC, 10903ZD, 10903ZU, 10904Z9, 10904ZA, 10904ZB, 10904ZC, 10904ZD, 10904ZU, 10907Z9, 10907ZA, 10907ZB, 10907ZC, 10907ZD, 10907ZU, 10908Z9, 10908ZA, 10908ZB, 10908ZC, 10908ZD, 10908ZU, 10A00ZZ, 10A03ZZ, 10A04ZZ, 10A07Z6, 10A07ZW, 10A07ZX, 10A07ZZ, 10A08ZZ, 10D00Z0, 10D00Z1, 10D00Z2, 10D07Z3, 10D07Z4, 10D07Z5, 10D07Z6, 10D07Z7, 10D07Z8, 10D17Z9, 10D17ZZ, 10D18Z9, 10D18ZZ, 10D27ZZ, 10D28ZZ, 10E0XZZ, 10H003Z, 10H00YZ, 10H073Z, 10H07YZ, 10J00ZZ, 10J03ZZ, 10J04ZZ, 10J07ZZ, 10J08ZZ, 10J0XZZ, 10J10ZZ, 10J13ZZ, 10J14ZZ, 10J17ZZ, 10J18ZZ, 10J1XZZ, 10J20ZZ, 10J23ZZ, 10J24ZZ, 10J27ZZ, 10J28ZZ, 10J2XZZ, 10P003Z, 10P00YZ, 10P073Z, 10P07YZ, 10Q00YE, 10Q00YF, 10Q00YG, 10Q00YH, 10Q00YJ, 10Q00YK, 10Q00YL, 10Q00YM, 10Q00YN, 10Q00YP, 10Q00YQ, 10Q00YR, 10Q00YS, 10Q00YT, 10Q00YV, 10Q00YY, 10Q00ZE, 10Q00ZF, 10Q00ZG, 10Q00ZH, 10Q00ZJ, 10Q00ZK, 10Q00ZL, 10Q00ZM, 10Q00ZN, 10Q00ZP, 10Q00ZQ, 10Q00ZR, 10Q00ZS, 10Q00ZT, 10Q00ZV, 10Q00ZY, 10Q03YE, 10Q03YF, 10Q03YG, 10Q03YH, 10Q03YJ, 10Q03YK, 10Q03YL, 10Q03YM, 10Q03YN, 10Q03YP, 10Q03YQ, 10Q03YR, 10Q03YS, 10Q03YT, 10Q03YV, 10Q03YY, 10Q03ZE, 10Q03ZF, 10Q03ZG, 10Q03ZH, 10Q03ZJ, 10Q03ZK, 10Q03ZL, 10Q03ZM, 10Q03ZN, 10Q03ZP, 10Q03ZQ, 10Q03ZR, 10Q03ZS, 10Q03ZT, 10Q03ZV, 10Q03ZY, 10Q04YE, 10Q04YF, 10Q04YG, 10Q04YH,

Appendix
Change in Gender on Record and Transgender Adults' Mental or Behavioral Health
Yee et al.

10Q04YJ, 10Q04YK, 10Q04YL, 10Q04YM, 10Q04YN, 10Q04YP,
10Q04YQ, 10Q04YR, 10Q04YS, 10Q04YT, 10Q04YV, 10Q04YY, 10Q04ZE,
10Q04ZF, 10Q04ZG, 10Q04ZH, 10Q04ZJ, 10Q04ZK, 10Q04ZL, 10Q04ZM,
10Q04ZN, 10Q04ZP, 10Q04ZQ, 10Q04ZR, 10Q04ZS, 10Q04ZT, 10Q04ZV,
10Q04ZY, 10Q07YE, 10Q07YF, 10Q07YG, 10Q07YH, 10Q07YJ, 10Q07YK,
10Q07YL, 10Q07YM, 10Q07YN, 10Q07YP, 10Q07YQ, 10Q07YR,
10Q07YS, 10Q07YT, 10Q07YV, 10Q07YY, 10Q07ZE, 10Q07ZF, 10Q07ZG,
10Q07ZH, 10Q07ZJ, 10Q07ZK, 10Q07ZL, 10Q07ZM, 10Q07ZN, 10Q07ZP,
10Q07ZQ, 10Q07ZR, 10Q07ZS, 10Q07ZT, 10Q07ZV, 10Q07ZY, 10Q08YE,
10Q08YF, 10Q08YG, 10Q08YH, 10Q08YJ, 10Q08YK, 10Q08YL,
10Q08YM, 10Q08YN, 10Q08YP, 10Q08YQ, 10Q08YR, 10Q08YS,
10Q08YT, 10Q08YV, 10Q08YY, 10Q08ZE, 10Q08ZF, 10Q08ZG, 10Q08ZH,
10Q08ZJ, 10Q08ZK, 10Q08ZL, 10Q08ZM, 10Q08ZN, 10Q08ZP, 10Q08ZQ,
10Q08ZR, 10Q08ZS, 10Q08ZT, 10Q08ZV, 10Q08ZY, 10S07ZZ, 10S0XZZ,
10S20ZZ, 10S23ZZ, 10S24ZZ, 10S27ZZ, 10S28ZZ, 10T20ZZ, 10T23ZZ,
10T24ZZ, 10T27ZZ, 10T28ZZ, 10Y03ZE, 10Y03ZF, 10Y03ZG, 10Y03ZH,
10Y03ZJ, 10Y03ZK, 10Y03ZL, 10Y03ZM, 10Y03ZN, 10Y03ZP, 10Y03ZQ,
10Y03ZR, 10Y03ZS, 10Y03ZT, 10Y03ZV, 10Y03ZY, 10Y04ZE, 10Y04ZF,
10Y04ZG, 10Y04ZH, 10Y04ZJ, 10Y04ZK, 10Y04ZL, 10Y04ZM, 10Y04ZN,
10Y04ZP, 10Y04ZQ, 10Y04ZR, 10Y04ZS, 10Y04ZT, 10Y04ZV, 10Y04ZY,
10Y07ZE, 10Y07ZF, 10Y07ZG, 10Y07ZH, 10Y07ZJ, 10Y07ZK, 10Y07ZL,
10Y07ZM, 10Y07ZN, 10Y07ZP, 10Y07ZQ, 10Y07ZR, 10Y07ZS, 10Y07ZT,
10Y07ZV, 10Y07ZY, 30273H1, 30273J1, 30273K1, 30273L1, 30273M1,
30273N1, 30273P1, 30273Q1, 30273R1, 30273S1, 30273T1, 30273V1,
30273W1, 30277H1, 30277J1, 30277K1, 30277L1, 30277M1, 30277N1,
30277P1, 30277Q1, 30277R1, 30277S1, 30277T1, 30277V1, 30277W1,
3E0E304, 3E0E305, 3E0E30M, 3E0E328, 3E0E329, 3E0E33Z, 3E0E36Z,
3E0E37Z, 3E0E3BZ, 3E0E3GC, 3E0E3HZ, 3E0E3KZ, 3E0E3NZ, 3E0E3SF,
3E0E3TZ, 3E0E4GC, 3E0E704, 3E0E705, 3E0E70M, 3E0E728, 3E0E729,
3E0E73Z, 3E0E76Z, 3E0E77Z, 3E0E7BZ, 3E0E7GC, 3E0E7HZ, 3E0E7KZ,
3E0E7NZ, 3E0E7SF, 3E0E7TZ, 3E0E804, 3E0E805, 3E0E80M, 3E0E828,
3E0E829, 3E0E83Z, 3E0E86Z, 3E0E87Z, 3E0E8BZ, 3E0E8GC, 3E0E8HZ,
3E0E8KZ, 3E0E8NZ, 3E0E8SF, 3E0E8TZ, 4A0H74Z, 4A0H7CZ, 4A0H7FZ,
4A0H7HZ, 4A0H84Z, 4A0H8CZ, 4A0H8FZ, 4A0H8HZ, 4A0HX4Z,
4A0HXCZ, 4A0HXFZ, 4A0HXHRZ, 4A0J72Z, 4A0J74Z, 4A0J7BZ, 4A0J82Z,
4A0J84Z, 4A0J8BZ, 4A0JX2Z, 4A0JX4Z, 4A0JXBZ, 4A1H74Z, 4A1H7CZ,
4A1H7FZ, 4A1H7HZ, 4A1H84Z, 4A1H8CZ, 4A1H8FZ, 4A1H8HZ,
4A1HX4Z, 4A1HXCZ, 4A1HXFZ, 4A1HXHRZ, 4A1J72Z, 4A1J74Z,
4A1J7BZ, 4A1J82Z, 4A1J84Z, 4A1J8BZ, 4A1JX2Z, 4A1JX4Z, 4A1JXBZ,
BU3BY0Z, BU3BYZZ, BU3BZZZ, BY30Y0Z, BY30YZZ, BY30ZZZ,
BY31Y0Z, BY31YZZ, BY31ZZZ, BY32Y0Z, BY32YZZ, BY32ZZZ,
BY33Y0Z, BY33YZZ, BY33ZZZ, BY34YZZ, BY34ZZZ, BY35Y0Z,
BY35YZZ, BY35ZZZ, BY36Y0Z, BY36YZZ, BY36ZZZ, BY47ZZZ,
BY48ZZZ, BY49ZZZ, BY4BZZZ, BY4CZZZ, BY4DZZZ, BY4FZZZ,
BY4GZZZ

Male sex-specific care: Prostate-related

Appendix
Change in Gender on Record and Transgender Adults' Mental or Behavioral Health
Yee et al.

CPT/HCPCS	0005U, 0021U, 0047U, 0053U, 0113U, 0133U, 3269F, 3270F, 3271F, 3272F, 3273F, 3274F, 55700, 55705, 55706, 55720, 55725, 55801, 55810, 55812, 55815, 55821, 55831, 55840, 55842, 55845, 55860, 55862, 55865, 55866, 55873, 55875, 55876, 76873, 81313, 81539, 81541, 81542, 81551, 84152, 84153, 84154
ICD9CM	V7644, 60000, 60001, 6019, 6011, 6010
ICD10CM	A1814, A5422, A5902, B3881, C61, D075, D291, D400, N400, N401, N402, N403, N410, N411, N412, N413, N414, N418, N419, N420, N421, N4230, N4231, N4232, N4239, N4281, N4282, N4283, N4289, N429, N5231, N5234, N5237, Q554, R9720, R9721, S37822A, S37822D, S37822S, S37823A, S37823D, S37823S, S37828A, S37828D, S37828S, S37829A, S37829D, S37829S, T83410A, T83410D, T83410S, T83420A, T83420D, T83420S, T83490A, T83490D, T83490S, Y762, Z125, Z1503, Z8546, Z87430
ICD10PCS	0V24X0Z, 0V24XYZ, 0V500ZZ, 0V503ZZ, 0V504ZZ, 0V507ZZ, 0V508ZZ, 0V9000Z, 0V900ZX, 0V900ZZ, 0V9030Z, 0V903ZX, 0V903ZZ, 0V9040Z, 0V904ZX, 0V904ZZ, 0V9070Z, 0V907ZX, 0V907ZZ, 0V9080Z, 0V908ZX, 0V908ZZ, 0VB00ZX, 0VB00ZZ, 0VB03ZX, 0VB03ZZ, 0VB04ZX, 0VB04ZZ, 0VB07ZX, 0VB07ZZ, 0VB08ZX, 0VB08ZZ, 0VC00ZZ, 0VC03ZZ, 0VC04ZZ, 0VC07ZZ, 0VC08ZZ, 0VH001Z, 0VH031Z, 0VH041Z, 0VH071Z, 0VH081Z, 0VH403Z, 0VH40YZ, 0VH433Z, 0VH43YZ, 0VH443Z, 0VH44YZ, 0VH473Z, 0VH47YZ, 0VH483Z, 0VH48YZ, 0VJ40ZZ, 0VJ43ZZ, 0VJ44ZZ, 0VJ4XZZ, 0VN00ZZ, 0VN03ZZ, 0VN04ZZ, 0VN07ZZ, 0VN08ZZ, 0VP400Z, 0VP401Z, 0VP403Z, 0VP407Z, 0VP40JZ, 0VP40KZ, 0VP40YZ, 0VP430Z, 0VP431Z, 0VP433Z, 0VP437Z, 0VP43JZ, 0VP43KZ, 0VP43YZ, 0VP440Z, 0VP441Z, 0VP443Z, 0VP447Z, 0VP44JZ, 0VP44KZ, 0VP44YZ, 0VP470Z, 0VP471Z, 0VP473Z, 0VP477Z, 0VP47JZ, 0VP47KZ, 0VP47YZ, 0VP480Z, 0VP481Z, 0VP483Z, 0VP487Z, 0VP48JZ, 0VP48KZ, 0VP48YZ, 0VP4X0Z, 0VP4X1Z, 0VP4X3Z, 0VQ00ZZ, 0VQ03ZZ, 0VQ04ZZ, 0VQ07ZZ, 0VQ08ZZ, 0VT00ZZ, 0VT04ZZ, 0VT07ZZ, 0VT08ZZ, 0VW400Z, 0VW403Z, 0VW407Z, 0VW40JZ, 0VW40KZ, 0VW40YZ, 0VW430Z, 0VW433Z, 0VW437Z, 0VW43JZ, 0VW43KZ, 0VW43YZ, 0VW440Z, 0VW443Z, 0VW447Z, 0VW44JZ, 0VW44KZ, 0VW44YZ, 0VW470Z, 0VW473Z, 0VW477Z, 0VW47JZ, 0VW47KZ, 0VW47YZ, 0VW480Z, 0VW483Z, 0VW487Z, 0VW48JZ, 0VW48KZ, 0VW48YZ, 0VW4X0Z, 0VW4X3Z, 0VW4X7Z, 0VW4XJZ, 0VW4XKZ, 8E0VX1C, BV030ZZ, BV031ZZ, BV03YZZ, BV2300Z, BV230ZZ, BV2310Z, BV23Y0Z, BV23YZZ, BV23ZZZ, BV33Y0Z, BV33YZZ, BV33ZZZ, BV49ZZZ, DV000ZZ, DV001ZZ, DV002ZZ, DV003Z0, DV003ZZ, DV004ZZ, DV005ZZ, DV006ZZ, DV1097Z, DV1098Z, DV1099Z, DV109BZ, DV109CZ, DV109YZ, DV10B7Z, DV10B8Z, DV10B9Z, DV10BBZ, DV10BCZ, DV10BYZ, DV20DZZ, DV20HZZ, DV20JZZ, DVY07ZZ, DVY08ZZ, DVY0CZZ, DVY0FZZ, DVY0KZZ
Male sex-specific care: Semen-related	
CPT/HCPCS	54700, 54800, 54830, 54840, 54860, 54861, 54865, 54900, 54901, 55200, 55250, 55300, 55500, 55520, 55530, 55535, 55550, 55559, 55600, 55605,

Appendix
Change in Gender on Record and Transgender Adults' Mental or Behavioral Health
Yee et al.

	55650, 55870, 89257, 89259, 89260, 89261, 89264, 89300, 89310, 89320, 89321, 89322, 89325, 89329, 89330, 89331, 89343, 89353, 00921, 00922
ICD9CM	60490, 6061, 60882, 60499
ICD10CM	C6300, C6301, C6302, C6310, C6311, C6312, D176, D2930, D2931, D2932, F524, N4340, N4341, N4342, N4401, N4402, N4404, N451, N453, N454, N4601, N46021, N46022, N46023, N46024, N46025, N46029, N4611, N46121, N46122, N46123, N46124, N46125, N46129, N490, N491, N503, N5311, N5312, N5314, Q553, Q554, R361, Z8548, Z9852
ICD10PCS	0V1N07J, 0V1N07K, 0V1N07N, 0V1N07P, 0V1N0JJ, 0V1N0JK, 0V1N0JN, 0V1N0JP, 0V1N0KJ, 0V1N0KK, 0V1N0KN, 0V1N0KP, 0V1N0ZJ, 0V1N0ZK, 0V1N0ZN, 0V1N0ZP, 0V1N47J, 0V1N47K, 0V1N47N, 0V1N47P, 0V1N4JJ, 0V1N4JK, 0V1N4JN, 0V1N4JP, 0V1N4KJ, 0V1N4KK, 0V1N4KN, 0V1N4KP, 0V1N4ZJ, 0V1N4ZK, 0V1N4ZN, 0V1N4ZP, 0V1P07J, 0V1P07K, 0V1P07N, 0V1P07P, 0V1P0JJ, 0V1P0JK, 0V1P0JN, 0V1P0JP, 0V1P0KJ, 0V1P0KK, 0V1P0KN, 0V1P0KP, 0V1P0ZJ, 0V1P0ZK, 0V1P0ZN, 0V1P0ZP, 0V1P47J, 0V1P47K, 0V1P47N, 0V1P47P, 0V1P4JJ, 0V1P4JK, 0V1P4JN, 0V1P4JP, 0V1P4KJ, 0V1P4KK, 0V1P4KN, 0V1P4KP, 0V1P4ZJ, 0V1P4ZK, 0V1P4ZN, 0V1P4ZP, 0V1Q07J, 0V1Q07K, 0V1Q07N, 0V1Q07P, 0V1Q0JJ, 0V1Q0JK, 0V1Q0JN, 0V1Q0JP, 0V1Q0KJ, 0V1Q0KK, 0V1Q0KN, 0V1Q0KP, 0V1Q0ZJ, 0V1Q0ZK, 0V1Q0ZN, 0V1Q0ZP, 0V1Q47J, 0V1Q47K, 0V1Q47N, 0V1Q47P, 0V1Q4JJ, 0V1Q4JK, 0V1Q4JN, 0V1Q4JP, 0V1Q4KJ, 0V1Q4KK, 0V1Q4KN, 0V1Q4KP, 0V1Q4ZJ, 0V1Q4ZK, 0V1Q4ZN, 0V1Q4ZP, 0V24X0Z, 0V24XYZ, 0V2MX0Z, 0V2MXYZ, 0V2RX0Z, 0V2RXYZ, 0V510ZZ, 0V513ZZ, 0V514ZZ, 0V520ZZ, 0V523ZZ, 0V524ZZ, 0V530ZZ, 0V533ZZ, 0V534ZZ, 0V5F0ZZ, 0V5F3ZZ, 0V5F4ZZ, 0V5F8ZZ, 0V5G0ZZ, 0V5G3ZZ, 0V5G4ZZ, 0V5G8ZZ, 0V5H0ZZ, 0V5H3ZZ, 0V5H4ZZ, 0V5H8ZZ, 0V5J0ZZ, 0V5J3ZZ, 0V5J4ZZ, 0V5J8ZZ, 0V5K0ZZ, 0V5K3ZZ, 0V5K4ZZ, 0V5K8ZZ, 0V5L0ZZ, 0V5L3ZZ, 0V5L4ZZ, 0V5L8ZZ, 0V5N0ZZ, 0V5N3ZZ, 0V5N4ZZ, 0V5N8ZZ, 0V5P0ZZ, 0V5P3ZZ, 0V5P4ZZ, 0V5P8ZZ, 0V5Q0ZZ, 0V5Q3ZZ, 0V5Q4ZZ, 0V5Q8ZZ, 0V7N0DZ, 0V7N0ZZ, 0V7N3DZ, 0V7N3ZZ, 0V7N4DZ, 0V7N4ZZ, 0V7P0DZ, 0V7P0ZZ, 0V7P3DZ, 0V7P3ZZ, 0V7P4DZ, 0V7P4ZZ, 0V7Q0DZ, 0V7Q0ZZ, 0V7Q3DZ, 0V7Q3ZZ, 0V7Q4DZ, 0V7Q4ZZ, 0V9100Z, 0V910ZX, 0V910ZZ, 0V9130Z, 0V913ZX, 0V913ZZ, 0V9140Z, 0V914ZX, 0V914ZZ, 0V9200Z, 0V920ZX, 0V920ZZ, 0V9230Z, 0V923ZX, 0V923ZZ, 0V9240Z, 0V924ZX, 0V924ZZ, 0V9300Z, 0V930ZX, 0V930ZZ, 0V9330Z, 0V933ZX, 0V933ZZ, 0V9340Z, 0V934ZX, 0V934ZZ, 0V9F00Z, 0V9F0ZX, 0V9F0ZZ, 0V9F30Z, 0V9F3ZX, 0V9F3ZZ, 0V9F40Z, 0V9F4ZX, 0V9F4ZZ, 0V9G00Z, 0V9G0ZX, 0V9G0ZZ, 0V9G30Z, 0V9G3ZX, 0V9G3ZZ, 0V9G40Z, 0V9G4ZX, 0V9G4ZZ, 0V9H00Z, 0V9H0ZX, 0V9H0ZZ, 0V9H30Z, 0V9H3ZX, 0V9H3ZZ, 0V9H40Z, 0V9H4ZX, 0V9H4ZZ, 0V9J00Z, 0V9J0ZX, 0V9J0ZZ, 0V9J30Z, 0V9J3ZX, 0V9J3ZZ, 0V9J40Z, 0V9J4ZX, 0V9J4ZZ, 0V9K00Z, 0V9K0ZX, 0V9K0ZZ, 0V9K30Z, 0V9K3ZX, 0V9K3ZZ, 0V9K40Z, 0V9K4ZX, 0V9K4ZZ, 0V9L00Z, 0V9L0ZX, 0V9L0ZZ, 0V9L30Z, 0V9L3ZX, 0V9L3ZZ, 0V9L40Z, 0V9L4ZX, 0V9L4ZZ, 0V9N00Z, 0V9N0ZX, 0V9N0ZZ, 0V9N30Z,

Appendix
Change in Gender on Record and Transgender Adults' Mental or Behavioral Health
Yee et al.

0V9N3ZX, 0V9N3ZZ, 0V9N40Z, 0V9N4ZX, 0V9N4ZZ, 0V9P00Z,
0V9P0ZX, 0V9P0ZZ, 0V9P30Z, 0V9P3ZX, 0V9P3ZZ, 0V9P40Z, 0V9P4ZX,
0V9P4ZZ, 0V9Q00Z, 0V9Q0ZX, 0V9Q0ZZ, 0V9Q30Z, 0V9Q3ZX,
0V9Q3ZZ, 0V9Q40Z, 0V9Q4ZX, 0V9Q4ZZ, 0VB10ZX, 0VB10ZZ,
0VB13ZX, 0VB13ZZ, 0VB14ZX, 0VB14ZZ, 0VB20ZX, 0VB20ZZ,
0VB23ZX, 0VB23ZZ, 0VB24ZX, 0VB24ZZ, 0VB30ZX, 0VB30ZZ,
0VB33ZX, 0VB33ZZ, 0VB34ZX, 0VB34ZZ, 0VBF0ZX, 0VBF0ZZ,
0VBF3ZX, 0VBF3ZZ, 0VBF4ZX, 0VBF4ZZ, 0VBF8ZX, 0VBF8ZZ,
0VBG0ZX, 0VBG0ZZ, 0VBG3ZX, 0VBG3ZZ, 0VBG4ZX, 0VBG4ZZ,
0VBG8ZX, 0VBG8ZZ, 0VBH0ZX, 0VBH0ZZ, 0VBH3ZX, 0VBH3ZZ,
0VBH4ZX, 0VBH4ZZ, 0VBH8ZX, 0VBH8ZZ, 0VBJ0ZX, 0VBJ0ZZ,
0VBJ3ZX, 0VBJ3ZZ, 0VBJ4ZX, 0VBJ4ZZ, 0VBJ8ZX, 0VBJ8ZZ,
0VBK0ZX, 0VBK0ZZ, 0VBK3ZX, 0VBK3ZZ, 0VBK4ZX, 0VBK4ZZ,
0VBK8ZX, 0VBK8ZZ, 0VBL0ZX, 0VBL0ZZ, 0VBL3ZX, 0VBL3ZZ,
0VBL4ZX, 0VBL4ZZ, 0VBL8ZX, 0VBL8ZZ, 0VBN0ZX, 0VBN0ZZ,
0VBN3ZX, 0VBN3ZZ, 0VBN4ZX, 0VBN4ZZ, 0VBN8ZX, 0VBN8ZZ,
0VBP0ZX, 0VBP0ZZ, 0VBP3ZX, 0VBP3ZZ, 0VBP4ZX, 0VBP4ZZ,
0VBP8ZX, 0VBP8ZZ, 0VBQ0ZX, 0VBQ0ZZ, 0VBQ3ZX, 0VBQ3ZZ,
0VBQ4ZX, 0VBQ4ZZ, 0VBQ8ZX, 0VBQ8ZZ, 0VC10ZZ, 0VC13ZZ,
0VC14ZZ, 0VC20ZZ, 0VC23ZZ, 0VC24ZZ, 0VC30ZZ, 0VC33ZZ,
0VC34ZZ, 0VCF0ZZ, 0VCF3ZZ, 0VCF4ZZ, 0VCG0ZZ, 0VCG3ZZ,
0VCG4ZZ, 0VCH0ZZ, 0VCH3ZZ, 0VCH4ZZ, 0VCJ0ZZ, 0VCJ3ZZ,
0VCJ4ZZ, 0VCK0ZZ, 0VCK3ZZ, 0VCK4ZZ, 0VCL0ZZ, 0VCL3ZZ,
0VCL4ZZ, 0VCN0ZZ, 0VCN3ZZ, 0VCN4ZZ, 0VCP0ZZ, 0VCP3ZZ,
0VCP4ZZ, 0VCQ0ZZ, 0VCQ3ZZ, 0VCQ4ZZ, 0VH403Z, 0VH40YZ,
0VH433Z, 0VH43YZ, 0VH443Z, 0VH44YZ, 0VH473Z, 0VH47YZ,
0VH483Z, 0VH48YZ, 0VHM03Z, 0VHM0YZ, 0VHM33Z, 0VHM3YZ,
0VHM43Z, 0VHM4YZ, 0VHM73Z, 0VHM7YZ, 0VHM83Z, 0VHM8YZ,
0VHR03Z, 0VHR0YZ, 0VHR33Z, 0VHR3YZ, 0VHR43Z, 0VHR4YZ,
0VHR73Z, 0VHR7YZ, 0VHR83Z, 0VHR8YZ, 0VJ40ZZ, 0VJ43ZZ,
0VJ44ZZ, 0VJ4XZZ, 0VJM0ZZ, 0VJM3ZZ, 0VJM4ZZ, 0VJMXZZ,
0VJR0ZZ, 0VJR3ZZ, 0VJR4ZZ, 0VJRXZZ, 0VLF0CZ, 0VLF0DZ,
0VLF0ZZ, 0VLF3CZ, 0VLF3DZ, 0VLF3ZZ, 0VLF4CZ, 0VLF4DZ,
0VLF4ZZ, 0VLF8CZ, 0VLF8DZ, 0VLF8ZZ, 0VLG0CZ, 0VLG0DZ,
0VLG0ZZ, 0VLG3CZ, 0VLG3DZ, 0VLG3ZZ, 0VLG4CZ, 0VLG4DZ,
0VLG4ZZ, 0VLG8CZ, 0VLG8DZ, 0VLG8ZZ, 0VLH0CZ, 0VLH0DZ,
0VLH0ZZ, 0VLH3CZ, 0VLH3DZ, 0VLH3ZZ, 0VLH4CZ, 0VLH4DZ,
0VLH4ZZ, 0VLH8CZ, 0VLH8DZ, 0VLH8ZZ, 0VLN0CZ, 0VLN0DZ,
0VLN0ZZ, 0VLN3CZ, 0VLN3DZ, 0VLN3ZZ, 0VLN4CZ, 0VLN4DZ,
0VLN4ZZ, 0VLN8CZ, 0VLN8DZ, 0VLN8ZZ, 0VLP0CZ, 0VLP0DZ,
0VLP0ZZ, 0VLP3CZ, 0VLP3DZ, 0VLP3ZZ, 0VLP4CZ, 0VLP4DZ,
0VLP4ZZ, 0VLP8CZ, 0VLP8DZ, 0VLP8ZZ, 0VLQ0CZ, 0VLQ0DZ,
0VLQ0ZZ, 0VLQ3CZ, 0VLQ3DZ, 0VLQ3ZZ, 0VLQ4CZ, 0VLQ4DZ,
0VLQ4ZZ, 0VLQ8CZ, 0VLQ8DZ, 0VLQ8ZZ, 0VMF0ZZ, 0VMF4ZZ,
0VMG0ZZ, 0VMG4ZZ, 0VMH0ZZ, 0VMH4ZZ, 0VN10ZZ, 0VN13ZZ,
0VN14ZZ, 0VN20ZZ, 0VN23ZZ, 0VN24ZZ, 0VN30ZZ, 0VN33ZZ,

Appendix
Change in Gender on Record and Transgender Adults' Mental or Behavioral Health
Yee et al.

0VN34ZZ, 0VNF0ZZ, 0VNF3ZZ, 0VNF4ZZ, 0VNF8ZZ, 0VNG0ZZ,
0VNG3ZZ, 0VNG4ZZ, 0VNG8ZZ, 0VNH0ZZ, 0VNH3ZZ, 0VNH4ZZ,
0VNH8ZZ, 0VNJ0ZZ, 0VNJ3ZZ, 0VNJ4ZZ, 0VNJ8ZZ, 0VNK0ZZ,
0VNK3ZZ, 0VNK4ZZ, 0VNK8ZZ, 0VNL0ZZ, 0VNL3ZZ, 0VNL4ZZ,
0VNL8ZZ, 0VNN0ZZ, 0VNN3ZZ, 0VNN4ZZ, 0VNN8ZZ, 0VNP0ZZ,
0VNP3ZZ, 0VNP4ZZ, 0VNP8ZZ, 0VNQ0ZZ, 0VNQ3ZZ, 0VNQ4ZZ,
0VNQ8ZZ, 0VP400Z, 0VP401Z, 0VP403Z, 0VP407Z, 0VP40JZ, 0VP40KZ,
0VP40YZ, 0VP430Z, 0VP431Z, 0VP433Z, 0VP437Z, 0VP43JZ, 0VP43KZ,
0VP43YZ, 0VP440Z, 0VP441Z, 0VP443Z, 0VP447Z, 0VP44JZ, 0VP44KZ,
0VP44YZ, 0VP470Z, 0VP471Z, 0VP473Z, 0VP477Z, 0VP47JZ, 0VP47KZ,
0VP47YZ, 0VP480Z, 0VP481Z, 0VP483Z, 0VP487Z, 0VP48JZ, 0VP48KZ,
0VP48YZ, 0VP4X0Z, 0VP4X1Z, 0VP4X3Z, 0VPM00Z, 0VPM03Z,
0VPM07Z, 0VPM0CZ, 0VPM0JZ, 0VPM0KZ, 0VPM0YZ, 0VPM30Z,
0VPM33Z, 0VPM37Z, 0VPM3CZ, 0VPM3JZ, 0VPM3KZ, 0VPM3YZ,
0VPM40Z, 0VPM43Z, 0VPM47Z, 0VPM4CZ, 0VPM4JZ, 0VPM4KZ,
0VPM4YZ, 0VPM70Z, 0VPM73Z, 0VPM77Z, 0VPM7CZ, 0VPM7JZ,
0VPM7KZ, 0VPM7YZ, 0VPM80Z, 0VPM83Z, 0VPM87Z, 0VPM8CZ,
0VPM8JZ, 0VPM8KZ, 0VPM8YZ, 0VPMX0Z, 0VPMX3Z, 0VPR00Z,
0VPR03Z, 0VPR07Z, 0VPR0CZ, 0VPR0DZ, 0VPR0JZ, 0VPR0KZ,
0VPR0YZ, 0VPR30Z, 0VPR33Z, 0VPR37Z, 0VPR3CZ, 0VPR3DZ,
0VPR3JZ, 0VPR3KZ, 0VPR3YZ, 0VPR40Z, 0VPR43Z, 0VPR47Z,
0VPR4CZ, 0VPR4DZ, 0VPR4JZ, 0VPR4KZ, 0VPR4YZ, 0VPR70Z,
0VPR73Z, 0VPR77Z, 0VPR7CZ, 0VPR7DZ, 0VPR7JZ, 0VPR7KZ,
0VPR7YZ, 0VPR80Z, 0VPR83Z, 0VPR87Z, 0VPR8CZ, 0VPR8DZ,
0VPR8JZ, 0VPR8KZ, 0VPR8YZ, 0VPRX0Z, 0VPRX3Z, 0VPRXDZ,
0VQ10ZZ, 0VQ13ZZ, 0VQ14ZZ, 0VQ20ZZ, 0VQ23ZZ, 0VQ24ZZ,
0VQ30ZZ, 0VQ33ZZ, 0VQ34ZZ, 0VQF0ZZ, 0VQF3ZZ, 0VQF4ZZ,
0VQF8ZZ, 0VQG0ZZ, 0VQG3ZZ, 0VQG4ZZ, 0VQG8ZZ, 0VQH0ZZ,
0VQH3ZZ, 0VQH4ZZ, 0VQH8ZZ, 0VQJ0ZZ, 0VQJ3ZZ, 0VQJ4ZZ,
0VQJ8ZZ, 0VQK0ZZ, 0VQK3ZZ, 0VQK4ZZ, 0VQK8ZZ, 0VQL0ZZ,
0VQL3ZZ, 0VQL4ZZ, 0VQL8ZZ, 0VQN0ZZ, 0VQN3ZZ, 0VQN4ZZ,
0VQN8ZZ, 0VQP0ZZ, 0VQP3ZZ, 0VQP4ZZ, 0VQP8ZZ, 0VQQ0ZZ,
0VQQ3ZZ, 0VQQ4ZZ, 0VQQ8ZZ, 0VSF0ZZ, 0VSF3ZZ, 0VSF4ZZ,
0VSF8ZZ, 0VSG0ZZ, 0VSG3ZZ, 0VSG4ZZ, 0VSG8ZZ, 0VSH0ZZ,
0VSH3ZZ, 0VSH4ZZ, 0VSH8ZZ, 0VT10ZZ, 0VT14ZZ, 0VT20ZZ,
0VT24ZZ, 0VT30ZZ, 0VT34ZZ, 0VTF0ZZ, 0VTF4ZZ, 0VTG0ZZ,
0VTG4ZZ, 0VTH0ZZ, 0VTH4ZZ, 0VTJ0ZZ, 0VTJ4ZZ, 0VTK0ZZ,
0VTK4ZZ, 0VTL0ZZ, 0VTL4ZZ, 0VTN0ZZ, 0VTN4ZZ, 0VTP0ZZ,
0VTP4ZZ, 0VTQ0ZZ, 0VTQ4ZZ, 0VU107Z, 0VU10JZ, 0VU10KZ,
0VU147Z, 0VU14JZ, 0VU14KZ, 0VU187Z, 0VU18JZ, 0VU18KZ, 0VU207Z,
0VU20JZ, 0VU20KZ, 0VU247Z, 0VU24JZ, 0VU24KZ, 0VU287Z, 0VU28JZ,
0VU28KZ, 0VU307Z, 0VU30JZ, 0VU30KZ, 0VU347Z, 0VU34JZ,
0VU34KZ, 0VU387Z, 0VU38JZ, 0VU38KZ, 0VUF07Z, 0VUF0JZ,
0VUF0KZ, 0VUF47Z, 0VUF4JZ, 0VUF4KZ, 0VUF87Z, 0VUF8JZ,
0VUF8KZ, 0VUG07Z, 0VUG0JZ, 0VUG0KZ, 0VUG47Z, 0VUG4JZ,
0VUG4KZ, 0VUG87Z, 0VUG8JZ, 0VUG8KZ, 0VUH07Z, 0VUH0JZ,

Appendix
Change in Gender on Record and Transgender Adults' Mental or Behavioral Health
Yee et al.

0VUH0KZ, 0VUH47Z, 0VUH4JZ, 0VUH4KZ, 0VUH87Z, 0VUH8JZ, 0VUH8KZ, 0VUJ07Z, 0VUJ0JZ, 0VUJ0KZ, 0VUJ47Z, 0VUJ4JZ, 0VUJ4KZ, 0VUJ87Z, 0VUJ8JZ, 0VUJ8KZ, 0VUK07Z, 0VUK0JZ, 0VUK0KZ, 0VUK47Z, 0VUK4JZ, 0VUK4KZ, 0VUK87Z, 0VUK8JZ, 0VUK8KZ, 0VUL07Z, 0VUL0JZ, 0VUL0KZ, 0VUL47Z, 0VUL4JZ, 0VUL4KZ, 0VUL87Z, 0VUL8JZ, 0VUL8KZ, 0VUN07Z, 0VUN0JZ, 0VUN0KZ, 0VUN47Z, 0VUN4JZ, 0VUN4KZ, 0VUN87Z, 0VUN8JZ, 0VUN8KZ, 0VUP07Z, 0VUP0JZ, 0VUP0KZ, 0VUP47Z, 0VUP4JZ, 0VUP4KZ, 0VUP87Z, 0VUP8JZ, 0VUP8KZ, 0VUQ07Z, 0VUQ0JZ, 0VUQ0KZ, 0VUQ47Z, 0VUQ4JZ, 0VUQ4KZ, 0VUQ87Z, 0VUQ8JZ, 0VUQ8KZ, 0VW400Z, 0VW403Z, 0VW407Z, 0VW40JZ, 0VW40KZ, 0VW40YZ, 0VW430Z, 0VW433Z, 0VW437Z, 0VW43JZ, 0VW43KZ, 0VW43YZ, 0VW440Z, 0VW443Z, 0VW447Z, 0VW44JZ, 0VW44KZ, 0VW44YZ, 0VW470Z, 0VW473Z, 0VW477Z, 0VW47JZ, 0VW47KZ, 0VW47YZ, 0VW480Z, 0VW483Z, 0VW487Z, 0VW48JZ, 0VW48KZ, 0VW48YZ, 0VW4X0Z, 0VW4X3Z, 0VW4X7Z, 0VW4XJZ, 0VW4XKZ, 0VWM00Z, 0VWM03Z, 0VWM07Z, 0VWM0CZ, 0VWM0JZ, 0VWM0KZ, 0VWM0YZ, 0VWM30Z, 0VWM33Z, 0VWM37Z, 0VWM3CZ, 0VWM3JZ, 0VWM3KZ, 0VWM3YZ, 0VWM40Z, 0VWM43Z, 0VWM47Z, 0VWM4CZ, 0VWM4JZ, 0VWM4KZ, 0VWM4YZ, 0VWM70Z, 0VWM73Z, 0VWM77Z, 0VWM7CZ, 0VWM7JZ, 0VWM7KZ, 0VWM7YZ, 0VWM80Z, 0VWM83Z, 0VWM87Z, 0VWM8CZ, 0VWM8JZ, 0VWM8KZ, 0VWM8YZ, 0VWMX0Z, 0VWMX3Z, 0VWMX7Z, 0VWMXCZ, 0VWMXJZ, 0VWMXKZ, 0VWR00Z, 0VWR03Z, 0VWR07Z, 0VWR0CZ, 0VWR0DZ, 0VWR0JZ, 0VWR0KZ, 0VWR0YZ, 0VWR30Z, 0VWR33Z, 0VWR37Z, 0VWR3CZ, 0VWR3DZ, 0VWR3JZ, 0VWR3KZ, 0VWR3YZ, 0VWR40Z, 0VWR43Z, 0VWR47Z, 0VWR4CZ, 0VWR4DZ, 0VWR4JZ, 0VWR4KZ, 0VWR4YZ, 0VWR70Z, 0VWR73Z, 0VWR77Z, 0VWR7CZ, 0VWR7DZ, 0VWR7JZ, 0VWR7KZ, 0VWR7YZ, 0VWR80Z, 0VWR83Z, 0VWR87Z, 0VWR8CZ, 0VWR8DZ, 0VWR8JZ, 0VWR8KZ, 0VWR8YZ, 0VWRX0Z, 0VWRX3Z, 0VWRX7Z, 0VWRXCZ, 0VWRXDZ, 0VWRXJZ, 0VWRXKZ, 3E0P3LZ, 3E0P7LZ, 8E0VX63, BV010ZZ, BV011ZZ, BV01YZZ, BV020ZZ, BV021ZZ, BV02YZZ, BV49ZZZ

Additional female sex-specific care

CPT/HCPCS 56405, 56420, 56440, 56441, 56442, 56501, 56515, 56605, 56606, 56620, 56625, 56630, 56631, 56632, 56633, 56634, 56637, 56640, 56700, 56740, 56810, 56820, 56821, 57000, 57010, 57020, 57022, 57023, 57061, 57065, 57100, 57105, 57452, 57454, 57455, 57456, 57460, 57461, 57500, 57505, 57510, 57511, 57513, 57520, 57522, 57530, 57531, 57540, 57545, 57550, 57555, 57556, 57558, 57800, 58100, 58110, 58120, 58140, 58145, 58146, 58300, 58301, 58323, 58340, 58345, 58346, 58350, 58353, 58356, 58400, 58410, 58545, 58546, 58548, 58555, 58558, 58559, 58560, 58561, 58562, 58563, 58565, 58575, 58578, 58579, 58674, 58823, 58999, 74775, 76815, 76816, 76817, 77031, 77032, 77046, 77047, 77048, 77049, 77051, 77052, 77053, 77054, 77055, 77056, 77057, 77061, 77062, 77063, 77065, 77066, 77067, 80055, 80081, 81535, 81536, 82120, 88141, 88142, 88143, 88147,

Appendix
Change in Gender on Record and Transgender Adults' Mental or Behavioral Health
Yee et al.

	88148, 88150, 88152, 88153, 88155, 88164, 88165, 88166, 88167, 88174, 88175, 00940, 00942, 00948, 00950, 0102U, 0128U, 0129U, 0131U, 0135U, 01958, 3015F, 4340F, G0202, G0279, G9899, G9900, S8075
ICD9CM	1121, 2181, 2189, 6160, 61610, 6200, 6202, 62211, 6228, 6248, 7950, 79503, 79505, V762, V2503, V2511, V2542, V2512, V2513, V2543, V8801, V4551, V2651, 6259, 6299, 7954
ICD10CM	A1816, A1817, A1818, A34, A5142, A5402, A5403, A5424, A5602, A5611, A5901, A6003, A6004, B373, C50011, C50012, C50019, C50111, C50112, C50119, C50211, C50212, C50219, C50311, C50312, C50319, C50411, C50412, C50419, C50511, C50512, C50519, C50611, C50612, C50619, C50811, C50812, C50819, C50911, C50912, C50919, C510, C511, C512, C518, C519, C52, C530, C531, C538, C539, C540, C542, C543, C548, C549, C55, C5710, C5711, C5712, C5720, C5721, C5722, C573, C574, C577, C578, C579, D060, D061, D067, D069, D071, D072, D0730, D0739, D250, D251, D252, D259, D260, D261, D267, D269, D280, D281, D282, D287, D289, D390, D398, D399, F5222, F5231, F525, F531, I863, L292, M830, N35028, N3512, N3582, N3592, N710, N711, N719, N72, N730, N731, N732, N733, N734, N735, N736, N738, N739, N74, N750, N751, N758, N759, N762, N763, N7681, N8110, N8111, N8112, N812, N813, N814, N815, N816, N8181, N8182, N8183, N8185, N820, N822, N823, N824, N836, N837, N840, N841, N842, N843, N848, N849, N852, N853, N854, N855, N856, N857, N858, N859, N86, N870, N871, N879, N880, N881, N882, N883, N884, N888, N889, N891, N894, N895, N896, N897, N900, N901, N903, N904, N905, N9060, N9061, N9069, N907, N90810, N90811, N90812, N90813, N90818, N9089, N909, N930, N931, N938, N939, N940, N9412, N942, N94810, N94818, N94819, O010, O011, O019, O020, O159, O620, O621, O622, O624, O665, O713, O714, O715, O716, O717, O7181, O7182, O7189, O719, O720, O754, O85, O8600, O8601, O8602, O8603, O8604, O8609, O8681, O8689, O901, O902, O923, O924, O926, Q510, Q5110, Q5111, Q5120, Q5121, Q5122, Q5128, Q513, Q514, Q515, Q517, Q51810, Q51811, Q51818, Q51820, Q51821, Q51828, Q519, Q520, Q5210, Q5211, Q52120, Q52121, Q52122, Q52123, Q52124, Q52129, Q522, Q523, Q524, Q525, Q526, Q5270, Q5271, Q5279, Q528, Q529, Q562, Q960, Q961, Q962, Q963, Q964, Q968, Q969, Q970, Q971, Q972, Q973, Q978, Q979, R870, R871, R872, R873, R874, R875, R87610, R87611, R87612, R87613, R87614, R87615, R87616, R87618, R87619, R87620, R87621, R87622, R87623, R87624, R87625, R87628, R87629, R8769, R877, R87810, R87811, R87820, R87821, R8789, R879, S30844A, S30844D, S30844S, S30846A, S30846D, S30846S, S30854A, S30854D, S30854S, S30856A, S30856D, S30856S, S30864A, S30864D, S30864S, S30866A, S30866D, S30866S, S30874A, S30874D, S30874S, S30876A, S30876D, S30876S, S3141XA, S3141XD, S3141XS, S3142XA, S3142XD, S3142XS, S3143XA, S3143XD, S3143XS, S3144XA, S3144XD, S3144XS, S3145XA, S3145XD, S3145XS, S31512A, S31512D, S31512S, S31522A, S31522D, S31522S, S31532A, S31532D, S31532S, S31542A, S31542D, S31542S, S31552A, S31552D, S31552S, S35531A, S35531D, S35531S, S35532A, S35532D, S35532S, S35533A,

Appendix
Change in Gender on Record and Transgender Adults' Mental or Behavioral Health
Yee et al.

S35533D, S35533S, S35534A, S35534D, S35534S, S35535A, S35535D, S35535S, S35536A, S35536D, S35536S, S3760XA, S3760XD, S3760XS, S3762XA, S3762XD, S3762XS, S3763XA, S3763XD, S3763XS, S3769XA, S3769XD, S3769XS, S38002A, S38002D, S38002S, S3803XA, S3803XD, S3803XS, S38211A, S38211D, S38211S, S38212A, S38212D, S38212S, T192XXA, T192XXD, T192XXS, T193XXA, T193XXD, T193XXS, T2107XA, T2107XD, T2107XS, T2117XA, T2117XD, T2117XS, T2127XA, T2127XD, T2127XS, T2137XA, T2137XD, T2137XS, T2147XA, T2147XD, T2147XS, T2157XA, T2157XD, T2157XS, T2167XA, T2167XD, T2167XS, T2177XA, T2177XD, T2177XS, T8331XA, T8331XD, T8331XS, T8332XA, T8332XD, T8332XS, T8339XA, T8339XD, T8339XS, T83711A, T83711D, T83711S, T83721A, T83721D, T83721S, Y760, Y761, Y763, Y768, Z0142, Z0375, Z124, Z1272, Z30012, Z30014, Z30015, Z30430, Z30431, Z30432, Z30433, Z3044, Z31430, Z31438, Z3182, Z8540, Z8541, Z8542, Z8544, Z86001, Z87410, Z87411, Z87412, Z90710, Z90711, Z90712, Z975, Z9851, Z98891, N760, N761, Z8742

ICD10PCS

04LE0CT, 04LE0DT, 04LE0ZT, 04LE3CT, 04LE3DT, 04LE3ZT, 04LE4CT, 04LE4DT, 04LE4ZT, 04LF0CU, 04LF0DU, 04LF0ZU, 04LF3CU, 04LF3DU, 04LF3ZU, 04LF4CU, 04LF4DU, 04LF4ZU, 0U2DX0Z, 0U2DXHZ, 0U2DXYZ, 0U2HX0Z, 0U2HXGZ, 0U2HXYZ, 0U2MX0Z, 0U2MXYZ, 0U540ZZ, 0U543ZZ, 0U544ZZ, 0U548ZZ, 0U590ZZ, 0U593ZZ, 0U594ZZ, 0U597ZZ, 0U598ZZ, 0U5C0ZZ, 0U5C3ZZ, 0U5C4ZZ, 0U5C7ZZ, 0U5C8ZZ, 0U5F0ZZ, 0U5F3ZZ, 0U5F4ZZ, 0U5F7ZZ, 0U5F8ZZ, 0U5G0ZZ, 0U5G3ZZ, 0U5G4ZZ, 0U5G7ZZ, 0U5G8ZZ, 0U5GXZZ, 0U5J0ZZ, 0U5JXZZ, 0U5K0ZZ, 0U5K3ZZ, 0U5K4ZZ, 0U5K7ZZ, 0U5K8ZZ, 0U5KXZZ, 0U5L0ZZ, 0U5LXZZ, 0U5M0ZZ, 0U5MXZZ, 0U790DZ, 0U790ZZ, 0U793DZ, 0U793ZZ, 0U794DZ, 0U794ZZ, 0U797DZ, 0U797ZZ, 0U798DZ, 0U798ZZ, 0U7C0DZ, 0U7C0ZZ, 0U7C3DZ, 0U7C3ZZ, 0U7C4DZ, 0U7C4ZZ, 0U7C7DZ, 0U7C7ZZ, 0U7C8DZ, 0U7C8ZZ, 0U7G0DZ, 0U7G0ZZ, 0U7G3DZ, 0U7G3ZZ, 0U7G4DZ, 0U7G4ZZ, 0U7G7DZ, 0U7G7ZZ, 0U7G8DZ, 0U7G8ZZ, 0U7K0DZ, 0U7K0ZZ, 0U7K3DZ, 0U7K3ZZ, 0U7K4DZ, 0U7K4ZZ, 0U7K7DZ, 0U7K7ZZ, 0U7K8DZ, 0U7K8ZZ, 0U7KXDZ, 0U7KXZZ, 0U840ZZ, 0U843ZZ, 0U844ZZ, 0U8K7ZZ, 0U8K8ZZ, 0U8KXZZ, 0U9400Z, 0U940ZX, 0U940ZZ, 0U9430Z, 0U943ZX, 0U943ZZ, 0U9440Z, 0U944ZX, 0U944ZZ, 0U9480Z, 0U948ZX, 0U948ZZ, 0U9900Z, 0U990ZX, 0U990ZZ, 0U9930Z, 0U993ZX, 0U993ZZ, 0U9940Z, 0U994ZX, 0U994ZZ, 0U9970Z, 0U997ZX, 0U997ZZ, 0U9980Z, 0U998ZX, 0U998ZZ, 0U9C00Z, 0U9C0ZX, 0U9C0ZZ, 0U9C30Z, 0U9C3ZX, 0U9C3ZZ, 0U9C40Z, 0U9C4ZX, 0U9C4ZZ, 0U9C70Z, 0U9C7ZX, 0U9C7ZZ, 0U9C80Z, 0U9C8ZX, 0U9C8ZZ, 0U9F00Z, 0U9F0ZX, 0U9F0ZZ, 0U9F30Z, 0U9F3ZX, 0U9F3ZZ, 0U9F40Z, 0U9F4ZX, 0U9F4ZZ, 0U9F70Z, 0U9F7ZX, 0U9F7ZZ, 0U9F80Z, 0U9F8ZX, 0U9F8ZZ, 0U9G00Z, 0U9G0ZX, 0U9G0ZZ, 0U9G30Z, 0U9G3ZX, 0U9G3ZZ, 0U9G40Z, 0U9G4ZX, 0U9G4ZZ, 0U9G70Z, 0U9G7ZX, 0U9G7ZZ, 0U9G80Z, 0U9G8ZX, 0U9G8ZZ, 0U9GX0Z, 0U9GXZX, 0U9GXZZ, 0U9J00Z, 0U9J0ZX, 0U9J0ZZ, 0U9JX0Z, 0U9JXZX, 0U9JXZZ, 0U9K00Z, 0U9K0ZX, 0U9K0ZZ,

Appendix
Change in Gender on Record and Transgender Adults' Mental or Behavioral Health
Yee et al.

0U9K30Z, 0U9K3ZX, 0U9K3ZZ, 0U9K40Z, 0U9K4ZX, 0U9K4ZZ,
0U9K70Z, 0U9K7ZX, 0U9K7ZZ, 0U9K80Z, 0U9K8ZX, 0U9K8ZZ,
0U9KX0Z, 0U9KXZX, 0U9KXZZ, 0U9L00Z, 0U9L0ZX, 0U9L0ZZ,
0U9LX0Z, 0U9LXZX, 0U9LXZZ, 0U9M00Z, 0U9M0ZX, 0U9M0ZZ,
0U9MX0Z, 0U9MXZX, 0U9MXZZ, 0UB40ZX, 0UB40ZZ, 0UB43ZX,
0UB43ZZ, 0UB44ZX, 0UB44ZZ, 0UB47ZX, 0UB47ZZ, 0UB48ZX,
0UB48ZZ, 0UB90ZX, 0UB90ZZ, 0UB93ZX, 0UB93ZZ, 0UB94ZX,
0UB94ZZ, 0UB97ZX, 0UB97ZZ, 0UB98ZX, 0UB98ZZ, 0UBC0ZX,
0UBC0ZZ, 0UBC3ZX, 0UBC3ZZ, 0UBC4ZX, 0UBC4ZZ, 0UBC7ZX,
0UBC7ZZ, 0UBC8ZX, 0UBC8ZZ, 0UBF0ZX, 0UBF0ZZ, 0UBF3ZX,
0UBF3ZZ, 0UBF4ZX, 0UBF4ZZ, 0UBF7ZX, 0UBF7ZZ, 0UBF8ZX,
0UBF8ZZ, 0UBG0ZX, 0UBG0ZZ, 0UBG3ZX, 0UBG3ZZ, 0UBG4ZX,
0UBG4ZZ, 0UBG7ZX, 0UBG7ZZ, 0UBG8ZX, 0UBG8ZZ, 0UBGXZX,
0UBGXZZ, 0UBJ0ZX, 0UBJ0ZZ, 0UBJXZX, 0UBJXZZ, 0UBK0ZX,
0UBK0ZZ, 0UBK3ZX, 0UBK3ZZ, 0UBK4ZX, 0UBK4ZZ, 0UBK7ZX,
0UBK7ZZ, 0UBK8ZX, 0UBK8ZZ, 0UBKXZX, 0UBKXZZ, 0UBL0ZX,
0UBL0ZZ, 0UBLXZX, 0UBLXZZ, 0UBM0ZX, 0UBM0ZZ, 0UBMXZX,
0UBMXZZ, 0UC40ZZ, 0UC43ZZ, 0UC44ZZ, 0UC48ZZ, 0UC90ZZ,
0UC93ZZ, 0UC94ZZ, 0UC97ZZ, 0UC98ZZ, 0UCC0ZZ, 0UCC3ZZ,
0UCC4ZZ, 0UCC7ZZ, 0UCC8ZZ, 0UCF0ZZ, 0UCF3ZZ, 0UCF4ZZ,
0UCF7ZZ, 0UCF8ZZ, 0UCG0ZZ, 0UCG3ZZ, 0UCG4ZZ, 0UCG7ZZ,
0UCG8ZZ, 0UCGXZZ, 0UCJ0ZZ, 0UCJXZZ, 0UCK0ZZ, 0UCK3ZZ,
0UCK4ZZ, 0UCK7ZZ, 0UCK8ZZ, 0UCKXZZ, 0UCL0ZZ, 0UCLXZZ,
0UCM0ZZ, 0UCMXZZ, 0UDN0ZZ, 0UDN3ZZ, 0UDN4ZZ, 0UF90ZZ,
0UF93ZZ, 0UF94ZZ, 0UF97ZZ, 0UF98ZZ, 0UF9XZZ, 0UH90HZ,
0UH97HZ, 0UH98HZ, 0UHC01Z, 0UHC31Z, 0UHC41Z, 0UHC71Z,
0UHC7HZ, 0UHC81Z, 0UHC8HZ, 0UHD03Z, 0UHD0YZ, 0UHD33Z,
0UHD3YZ, 0UHD43Z, 0UHD4YZ, 0UHD73Z, 0UHD7YZ, 0UHD83Z,
0UHD8YZ, 0UHF7GZ, 0UHF8GZ, 0UHG01Z, 0UHG31Z, 0UHG41Z,
0UHG71Z, 0UHG7GZ, 0UHG81Z, 0UHG8GZ, 0UHGX1Z, 0UHH03Z,
0UHH0YZ, 0UHH33Z, 0UHH3YZ, 0UHH43Z, 0UHH4YZ, 0UHH73Z,
0UHH7YZ, 0UHH83Z, 0UHH8YZ, 0UJD0ZZ, 0UJD3ZZ, 0UJD4ZZ,
0UJD7ZZ, 0UJD8ZZ, 0UJDXZZ, 0UJH0ZZ, 0UJH3ZZ, 0UJH4ZZ, 0UJH7ZZ,
0UJH8ZZ, 0UJHXZZ, 0UJM0ZZ, 0UJMXZZ, 0ULF7DZ, 0ULF7ZZ,
0ULF8DZ, 0ULF8ZZ, 0ULG7DZ, 0ULG7ZZ, 0ULG8DZ, 0ULG8ZZ,
0UM40ZZ, 0UM44ZZ, 0UM90ZZ, 0UM94ZZ, 0UMC0ZZ, 0UMC4ZZ,
0UMF0ZZ, 0UMF4ZZ, 0UMG0ZZ, 0UMG4ZZ, 0UMJXZZ, 0UMK0ZZ,
0UMK4ZZ, 0UMKXZZ, 0UMMXZZ, 0UN40ZZ, 0UN43ZZ, 0UN44ZZ,
0UN48ZZ, 0UN90ZZ, 0UN93ZZ, 0UN94ZZ, 0UN97ZZ, 0UN98ZZ,
0UNC0ZZ, 0UNC3ZZ, 0UNC4ZZ, 0UNC7ZZ, 0UNC8ZZ, 0UNF0ZZ,
0UNF3ZZ, 0UNF4ZZ, 0UNF7ZZ, 0UNF8ZZ, 0UNG0ZZ, 0UNG3ZZ,
0UNG4ZZ, 0UNG7ZZ, 0UNG8ZZ, 0UNGXZZ, 0UNJ0ZZ, 0UNJXZZ,
0UNK0ZZ, 0UNK3ZZ, 0UNK4ZZ, 0UNK7ZZ, 0UNK8ZZ, 0UNKXZZ,
0UNL0ZZ, 0UNLXZZ, 0UNM0ZZ, 0UNMXZZ, 0UPD00Z, 0UPD01Z,
0UPD03Z, 0UPD07Z, 0UPD0CZ, 0UPD0DZ, 0UPD0HZ, 0UPD0JZ,
0UPD0KZ, 0UPD0YZ, 0UPD30Z, 0UPD31Z, 0UPD33Z, 0UPD37Z,

Appendix
Change in Gender on Record and Transgender Adults' Mental or Behavioral Health
Yee et al.

0UPD3CZ, 0UPD3DZ, 0UPD3HZ, 0UPD3JZ, 0UPD3KZ, 0UPD3YZ,
0UPD40Z, 0UPD41Z, 0UPD43Z, 0UPD47Z, 0UPD4CZ, 0UPD4DZ,
0UPD4HZ, 0UPD4JZ, 0UPD4KZ, 0UPD4YZ, 0UPD70Z, 0UPD71Z,
0UPD73Z, 0UPD77Z, 0UPD7CZ, 0UPD7DZ, 0UPD7HZ, 0UPD7JZ,
0UPD7KZ, 0UPD7YZ, 0UPD80Z, 0UPD81Z, 0UPD83Z, 0UPD87Z,
0UPD8CZ, 0UPD8DZ, 0UPD8HZ, 0UPD8JZ, 0UPD8KZ, 0UPD8YZ,
0UPDX0Z, 0UPDX3Z, 0UPDXDZ, 0UPDXHZ, 0UPH00Z, 0UPH01Z,
0UPH03Z, 0UPH07Z, 0UPH0DZ, 0UPH0JZ, 0UPH0KZ, 0UPH0YZ,
0UPH30Z, 0UPH31Z, 0UPH33Z, 0UPH37Z, 0UPH3DZ, 0UPH3JZ,
0UPH3KZ, 0UPH3YZ, 0UPH40Z, 0UPH41Z, 0UPH43Z, 0UPH47Z,
0UPH4DZ, 0UPH4JZ, 0UPH4KZ, 0UPH4YZ, 0UPH70Z, 0UPH71Z,
0UPH73Z, 0UPH77Z, 0UPH7DZ, 0UPH7JZ, 0UPH7KZ, 0UPH7YZ,
0UPH80Z, 0UPH81Z, 0UPH83Z, 0UPH87Z, 0UPH8DZ, 0UPH8JZ,
0UPH8KZ, 0UPH8YZ, 0UPHX0Z, 0UPHX1Z, 0UPHX3Z, 0UPHXDZ,
0UPM00Z, 0UPM07Z, 0UPM0JZ, 0UPM0KZ, 0UPMX0Z, 0UQ40ZZ,
0UQ43ZZ, 0UQ44ZZ, 0UQ48ZZ, 0UQ90ZZ, 0UQ93ZZ, 0UQ94ZZ,
0UQ97ZZ, 0UQ98ZZ, 0UQC0ZZ, 0UQC3ZZ, 0UQC4ZZ, 0UQC7ZZ,
0UQC8ZZ, 0UQF0ZZ, 0UQF3ZZ, 0UQF4ZZ, 0UQF7ZZ, 0UQF8ZZ,
0UQG0ZZ, 0UQG3ZZ, 0UQG4ZZ, 0UQG7ZZ, 0UQG8ZZ, 0UQGXZZ,
0UQJ0ZZ, 0UQJXZZ, 0UQK0ZZ, 0UQK3ZZ, 0UQK4ZZ, 0UQK7ZZ,
0UQK8ZZ, 0UQKXZZ, 0UQL0ZZ, 0UQLXZZ, 0UQM0ZZ, 0UQMXZZ,
0US40ZZ, 0US44ZZ, 0US48ZZ, 0US90ZZ, 0US94ZZ, 0US97ZZ, 0US98ZZ,
0US9XZZ, 0USC0ZZ, 0USC4ZZ, 0USC8ZZ, 0USF0ZZ, 0USF4ZZ,
0USF8ZZ, 0USG0ZZ, 0USG4ZZ, 0USG7ZZ, 0USG8ZZ, 0USGXZZ,
0UT40ZZ, 0UT44ZZ, 0UT47ZZ, 0UT48ZZ, 0UT90ZL, 0UT90ZZ, 0UT94ZL,
0UT94ZZ, 0UT97ZL, 0UT97ZZ, 0UT98ZL, 0UT98ZZ, 0UT9FZL, 0UT9FZZ,
0UTC0ZZ, 0UTC4ZZ, 0UTC7ZZ, 0UTC8ZZ, 0UTF0ZZ, 0UTF4ZZ,
0UTF7ZZ, 0UTF8ZZ, 0UTG0ZZ, 0UTG4ZZ, 0UTG7ZZ, 0UTG8ZZ,
0UTJ0ZZ, 0UTJXZZ, 0UTK0ZZ, 0UTK4ZZ, 0UTK7ZZ, 0UTK8ZZ,
0UTKXZZ, 0UTL0ZZ, 0UTLXZZ, 0UTM0ZZ, 0UTMXZZ, 0UU407Z,
0UU40JZ, 0UU40KZ, 0UU447Z, 0UU44JZ, 0UU44KZ, 0UUF07Z, 0UUF0JZ,
0UUF0KZ, 0UUF47Z, 0UUF4JZ, 0UUF4KZ, 0UUF77Z, 0UUF7JZ,
0UUF7KZ, 0UUF87Z, 0UUF8JZ, 0UUF8KZ, 0UUJ07Z, 0UUJ0JZ,
0UUJ0KZ, 0UUJX7Z, 0UUJXJZ, 0UUJXKZ, 0UUK07Z, 0UUK0JZ,
0UUK0KZ, 0UUK47Z, 0UUK4JZ, 0UUK4KZ, 0UUK77Z, 0UUK7JZ,
0UUK7KZ, 0UUK87Z, 0UUK8JZ, 0UUK8KZ, 0UUKX7Z, 0UUKXJZ,
0UUKXKZ, 0UUM07Z, 0UUM0JZ, 0UUM0KZ, 0UUMX7Z, 0UUMXJZ,
0UUMXKZ, 0UVC0CZ, 0UVC0DZ, 0UVC0ZZ, 0UVC3CZ, 0UVC3DZ,
0UVC3ZZ, 0UVC4CZ, 0UVC4DZ, 0UVC4ZZ, 0UVC7DZ, 0UVC7ZZ,
0UVC8DZ, 0UVC8ZZ, 0UY90Z0, 0UY90Z1, 0UY90Z2, 0W2NX0Z,
0W2NXYZ, 0W3N0ZZ, 0W3N3ZZ, 0W3N4ZZ, 0W8NXZZ, 0W9N00Z,
0W9N0ZX, 0W9N0ZZ, 0W9N30Z, 0W9N3ZX, 0W9N3ZZ, 0W9N40Z,
0W9N4ZZ, 0WBN0ZX, 0WBN0ZZ, 0WBN3ZX, 0WBN3ZZ, 0WBN4ZX,
0WBN4ZZ, 0WBNXZX, 0WBNXZZ, 0WHN03Z, 0WHN0YZ, 0WHN33Z,
0WHN3YZ, 0WHN43Z, 0WHN4YZ, 0WMN0ZZ, 0WPN00Z, 0WPN01Z,
0WPN03Z, 0WPN07Z, 0WPN0JZ, 0WPN0KZ, 0WPN0YZ, 0WPN30Z,

Appendix
Change in Gender on Record and Transgender Adults' Mental or Behavioral Health
Yee et al.

0WPN31Z, 0WPN33Z, 0WPN37Z, 0WPN3JZ, 0WPN3KZ, 0WPN3YZ, 0WPN40Z, 0WPN41Z, 0WPN43Z, 0WPN47Z, 0WPN4JZ, 0WPN4KZ, 0WPN4YZ, 0WPNX0Z, 0WPNX1Z, 0WPNX3Z, 0WPNX7Z, 0WPNXJZ, 0WPNXKZ, 0WPNXYZ, 0WQN0ZZ, 0WQN3ZZ, 0WQN4ZZ, 0WQNXZZ, 0WUN07Z, 0WUN0JZ, 0WUN0KZ, 0WUN47Z, 0WUN4JZ, 0WUN4KZ, 2Y04X5Z, 2Y44X5Z, 2Y54X5Z, 3E0P05Z, 3E0P304, 3E0P305, 3E0P30M, 3E0P328, 3E0P329, 3E0P33Z, 3E0P35Z, 3E0P36Z, 3E0P37Z, 3E0P3BZ, 3E0P3GC, 3E0P3HZ, 3E0P3KZ, 3E0P3NZ, 3E0P3Q0, 3E0P3Q1, 3E0P3SF, 3E0P3TZ, 3E0P3VZ, 3E0P45Z, 3E0P4GC, 3E0P704, 3E0P705, 3E0P70M, 3E0P728, 3E0P729, 3E0P73Z, 3E0P76Z, 3E0P77Z, 3E0P7BZ, 3E0P7GC, 3E0P7HZ, 3E0P7KZ, 3E0P7NZ, 3E0P7Q0, 3E0P7Q1, 3E0P7SF, 3E0P7TZ, 3E0P7VZ, 3E0P804, 3E0P805, 3E0P80M, 3E0P828, 3E0P829, 3E0P83Z, 3E0P86Z, 3E0P87Z, 3E0P8BZ, 3E0P8GC, 3E0P8HZ, 3E0P8KZ, 3E0P8NZ, 3E0P8SF, 3E0P8TZ, 3E1P38X, 3E1P38Z, 3E1P78X, 3E1P78Z, 3E1P88X, 3E1P88Z, 8E0HX62, 8E0UXY7, BU060ZZ, BU061ZZ, BU06YZZ, BU090ZZ, BU091ZZ, BU09YZZ, BU160ZZ, BU161ZZ, BU16YZZ, BU16ZZZ, BU190ZZ, BU191ZZ, BU19YZZ, BU19ZZZ, BU36Y0Z, BU36YZZ, BU36ZZZ, BU39Y0Z, BU39YZZ, BU39ZZZ, BU46YZZ, BU46ZZZ, DU010ZZ, DU011ZZ, DU012ZZ, DU013Z0, DU013ZZ, DU014ZZ, DU015ZZ, DU016ZZ, DU020ZZ, DU021ZZ, DU022ZZ, DU023Z0, DU023ZZ, DU024ZZ, DU025ZZ, DU026ZZ, DU1197Z, DU1198Z, DU1199Z, DU119BZ, DU119CZ, DU119YZ, DU11B7Z, DU11B8Z, DU11B9Z, DU11BBZ, DU11BCZ, DU11BYZ, DU1297Z, DU1298Z, DU1299Z, DU129BZ, DU129CZ, DU129YZ, DU12B7Z, DU12B8Z, DU12B9Z, DU12BBZ, DU12BCZ, DU12BYZ, DU21DZZ, DU21HZZ, DU21JZZ, DU22DZZ, DU22HZZ, DU22JZZ, DUY17ZZ, DUY18ZZ, DUY1CZZ, DUY1FZZ, DUY27ZZ, DUY28ZZ, DUY2CZZ, DUY2FZZ

Additional male sex-specific care

CPT/HCPCS 0096U, 3267F, 3268F, 55000, 55040, 55041, 55060, 55400, 55540, 55680, 55874, 55899, 76870, 89335, 00920, 00924, 00926, 00928, 00930, 00932, 00934, 00936

ICD9CM 2572, 6083, 6039, 6071, 6079, 4564, 605, 6073, 75251, 60785, 60783, 6078, 60789, 60889, 60784, 6084, 9224, 6088, 6089

ICD10CM A1815, A5423, A6001, A6002, B260, B3742, C50021, C50022, C50029, C50121, C50122, C50129, C50221, C50222, C50229, C50321, C50322, C50329, C50421, C50422, C50429, C50521, C50522, C50529, C50621, C50622, C50629, C50821, C50822, C50829, C50921, C50922, C50929, C600, C601, C602, C608, C609, C6200, C6201, C6202, C6210, C6211, C6212, C6290, C6291, C6292, C632, C637, C638, C639, D074, D0760, D0761, D0769, D290, D2920, D2921, D2922, D294, D298, D299, D4010, D4011, D4012, D408, D409, E290, E291, E298, E299, E895, F5221, F5232, I861, L291, N430, N431, N432, N433, N4400, N4403, N441, N442, N448, N452, N471, N472, N473, N474, N475, N476, N477, N478, N480, N481, N4821, N4822, N4829, N4830, N4831, N4832, N4833, N4839, N485, N486, N4881, N4882, N4883, N492, N493, N498, N500, N501, N50811, N50812, N50819,

Appendix
Change in Gender on Record and Transgender Adults' Mental or Behavioral Health
Yee et al.

N5082, N5201, N5202, N5203, N521, N5232, N5233, N5235, N5236, N5313, N5319, N538, N539, N99110, N99111, N99112, N99113, N99114, N99115, N99116, P835, Q5300, Q5301, Q5302, Q5310, Q53111, Q53112, Q5312, Q5313, Q5320, Q53211, Q53212, Q5322, Q5323, Q539, Q540, Q541, Q542, Q543, Q544, Q548, Q549, Q550, Q551, Q5520, Q5521, Q5522, Q5523, Q5529, Q555, Q5561, Q5562, Q5563, Q5564, Q5569, Q557, Q558, Q559, Q561, Q980, Q981, Q983, Q984, Q986, Q987, Q988, Q989, R3983, R3984, R860, R861, R862, R863, R864, R865, R866, R867, R868, R869, R93811, R93812, R93813, R93819, S30201A, S30201D, S30201S, S3021XA, S3021XD, S3021XS, S3022XA, S3022XD, S3022XS, S30812A, S30812D, S30812S, S30813A, S30813D, S30813S, S30815A, S30815D, S30815S, S30822A, S30822D, S30822S, S30823A, S30823D, S30823S, S30825A, S30825D, S30825S, S30842A, S30842D, S30842S, S30843A, S30843D, S30843S, S30845A, S30845D, S30845S, S30852A, S30852D, S30852S, S30853A, S30853D, S30853S, S30855A, S30855D, S30855S, S30862A, S30862D, S30862S, S30863A, S30863D, S30863S, S30865A, S30865D, S30865S, S30872A, S30872D, S30872S, S30873A, S30873D, S30873S, S30875A, S30875D, S30875S, S3094XA, S3094XD, S3094XS, S3121XA, S3121XD, S3121XS, S3122XA, S3122XD, S3122XS, S3123XA, S3123XD, S3123XS, S3124XA, S3124XD, S3124XS, S3125XA, S3125XD, S3125XS, S3130XA, S3130XD, S3130XS, S3131XA, S3131XD, S3131XS, S3132XA, S3132XD, S3132XS, S3133XA, S3133XD, S3133XS, S3134XA, S3134XD, S3134XS, S3135XA, S3135XD, S3135XS, S31501A, S31501D, S31501S, S31511A, S31511D, S31511S, S31521A, S31521D, S31521S, S31531A, S31531D, S31531S, S31541A, S31541D, S31541S, S31551A, S31551D, S31551S, S38001A, S38001D, S38001S, S3801XA, S3801XD, S3801XS, S3802XA, S3802XD, S3802XS, S38221A, S38221D, S38221S, S38222A, S38222D, S38222S, S38231A, S38231D, S38231S, S38232A, S38232D, S38232S, S39840A, S39840D, S39840S, T194XXA, T194XXD, T194XXS, T2106XA, T2106XD, T2106XS, T2116XA, T2116XD, T2116XS, T2126XA, T2126XD, T2126XS, T2136XA, T2136XD, T2136XS, T2146XA, T2146XD, T2146XS, T2156XA, T2156XD, T2156XS, T2166XA, T2166XD, T2166XS, T2176XA, T2176XD, T2176XS, Z1271, Z31440, Z31448, Z412, Z8545, Z8547, Z8549, Z87710, N5089, N5239, N528, N529, N522, N4889, N489, N499, Z87438

ICD10PCS 0V28X0Z, 0V28XYZ, 0V2DX0Z, 0V2DXYZ, 0V2SX0Z, 0V2SXYZ, 0V550ZZ, 0V553ZZ, 0V554ZZ, 0V55XZZ, 0V560ZZ, 0V563ZZ, 0V564ZZ, 0V570ZZ, 0V573ZZ, 0V574ZZ, 0V590ZZ, 0V593ZZ, 0V594ZZ, 0V5B0ZZ, 0V5B3ZZ, 0V5B4ZZ, 0V5C0ZZ, 0V5C3ZZ, 0V5C4ZZ, 0V5S0ZZ, 0V5S3ZZ, 0V5S4ZZ, 0V5SXZZ, 0V5T0ZZ, 0V5T3ZZ, 0V5T4ZZ, 0V5TXZZ, 0V9500Z, 0V950ZX, 0V950ZZ, 0V9530Z, 0V953ZX, 0V953ZZ, 0V9540Z, 0V954ZX, 0V954ZZ, 0V95X0Z, 0V95XZX, 0V95XZZ, 0V9600Z, 0V960ZX, 0V960ZZ, 0V9630Z, 0V963ZX, 0V963ZZ, 0V9640Z, 0V964ZX, 0V964ZZ, 0V9700Z, 0V970ZX, 0V970ZZ, 0V9730Z, 0V973ZX, 0V973ZZ, 0V9740Z, 0V974ZX, 0V974ZZ, 0V9900Z, 0V990ZX, 0V990ZZ, 0V9930Z, 0V993ZX, 0V993ZZ, 0V9940Z, 0V994ZX, 0V994ZZ, 0V9B00Z, 0V9B0ZX, 0V9B0ZZ, 0V9B30Z,

Appendix
Change in Gender on Record and Transgender Adults' Mental or Behavioral Health
Yee et al.

0V9B3ZX, 0V9B3ZZ, 0V9B40Z, 0V9B4ZX, 0V9B4ZZ, 0V9C00Z,
0V9C0ZX, 0V9C0ZZ, 0V9C30Z, 0V9C3ZX, 0V9C3ZZ, 0V9C40Z,
0V9C4ZX, 0V9C4ZZ, 0V9S00Z, 0V9S0ZX, 0V9S0ZZ, 0V9S30Z, 0V9S3ZX,
0V9S3ZZ, 0V9S40Z, 0V9S4ZX, 0V9S4ZZ, 0V9SX0Z, 0V9SXZX,
0V9SXZZ, 0V9T00Z, 0V9T0ZX, 0V9T0ZZ, 0V9T30Z, 0V9T3ZX, 0V9T3ZZ,
0V9T40Z, 0V9T4ZX, 0V9T4ZZ, 0V9TX0Z, 0V9TXZX, 0V9TXZZ,
0VB50ZX, 0VB50ZZ, 0VB53ZX, 0VB53ZZ, 0VB54ZX, 0VB54ZZ,
0VB5XZX, 0VB5XZZ, 0VB60ZX, 0VB60ZZ, 0VB63ZX, 0VB63ZZ,
0VB64ZX, 0VB64ZZ, 0VB70ZX, 0VB70ZZ, 0VB73ZX, 0VB73ZZ,
0VB74ZX, 0VB74ZZ, 0VB90ZX, 0VB90ZZ, 0VB93ZX, 0VB93ZZ,
0VB94ZX, 0VB94ZZ, 0VBB0ZX, 0VBB0ZZ, 0VBB3ZX, 0VBB3ZZ,
0VBB4ZX, 0VBB4ZZ, 0VBC0ZX, 0VBC0ZZ, 0VBC3ZX, 0VBC3ZZ,
0VBC4ZX, 0VBC4ZZ, 0VBS0ZX, 0VBS0ZZ, 0VBS3ZX, 0VBS3ZZ,
0VBS4ZX, 0VBS4ZZ, 0VBSXZX, 0VBSXZZ, 0VBT0ZX, 0VBT0ZZ,
0VBT3ZX, 0VBT3ZZ, 0VBT4ZX, 0VBT4ZZ, 0VBTXZX, 0VBTXZZ,
0VC50ZZ, 0VC53ZZ, 0VC54ZZ, 0VC5XZZ, 0VC60ZZ, 0VC63ZZ,
0VC64ZZ, 0VC70ZZ, 0VC73ZZ, 0VC74ZZ, 0VC90ZZ, 0VC93ZZ,
0VC94ZZ, 0VCB0ZZ, 0VCB3ZZ, 0VCB4ZZ, 0VCC0ZZ, 0VCC3ZZ,
0VCC4ZZ, 0VCS0ZZ, 0VCS3ZZ, 0VCS4ZZ, 0VCSXZZ, 0VCT0ZZ,
0VCT3ZZ, 0VCT4ZZ, 0VCTXZZ, 0VH803Z, 0VH80YZ, 0VH833Z,
0VH83YZ, 0VH843Z, 0VH84YZ, 0VH873Z, 0VH87YZ, 0VH883Z,
0VH88YZ, 0VHD03Z, 0VHD0YZ, 0VHD33Z, 0VHD3YZ, 0VHD43Z,
0VHD4YZ, 0VHD73Z, 0VHD7YZ, 0VHD83Z, 0VHD8YZ, 0VHS03Z,
0VHS0YZ, 0VHS33Z, 0VHS3YZ, 0VHS43Z, 0VHS4YZ, 0VHS7YZ,
0VHS8YZ, 0VHSX3Z, 0VJ80ZZ, 0VJ83ZZ, 0VJ84ZZ, 0VJ8XZZ, 0VJD0ZZ,
0VJD3ZZ, 0VJD4ZZ, 0VJDXZZ, 0VM5XZZ, 0VM60ZZ, 0VM64ZZ,
0VM70ZZ, 0VM74ZZ, 0VM90ZZ, 0VM94ZZ, 0VMB0ZZ, 0VMB4ZZ,
0VMC0ZZ, 0VMC4ZZ, 0VMSXZZ, 0VN50ZZ, 0VN53ZZ, 0VN54ZZ,
0VN5XZZ, 0VN60ZZ, 0VN63ZZ, 0VN64ZZ, 0VN70ZZ, 0VN73ZZ,
0VN74ZZ, 0VN90ZZ, 0VN93ZZ, 0VN94ZZ, 0VNB0ZZ, 0VNB3ZZ,
0VNB4ZZ, 0VNC0ZZ, 0VNC3ZZ, 0VNC4ZZ, 0VNS0ZZ, 0VNS3ZZ,
0VNS4ZZ, 0VNSXZZ, 0VNT0ZZ, 0VNT3ZZ, 0VNT4ZZ, 0VNTXZZ,
0VP800Z, 0VP803Z, 0VP807Z, 0VP80JZ, 0VP80KZ, 0VP80YZ, 0VP830Z,
0VP833Z, 0VP837Z, 0VP83JZ, 0VP83KZ, 0VP83YZ, 0VP840Z, 0VP843Z,
0VP847Z, 0VP84JZ, 0VP84KZ, 0VP84YZ, 0VP870Z, 0VP873Z, 0VP877Z,
0VP87JZ, 0VP87KZ, 0VP87YZ, 0VP880Z, 0VP883Z, 0VP887Z, 0VP88JZ,
0VP88KZ, 0VP88YZ, 0VP8X0Z, 0VP8X3Z, 0VPD00Z, 0VPD03Z,
0VPD07Z, 0VPD0JZ, 0VPD0KZ, 0VPD0YZ, 0VPD30Z, 0VPD33Z,
0VPD37Z, 0VPD3JZ, 0VPD3KZ, 0VPD3YZ, 0VPD40Z, 0VPD43Z,
0VPD47Z, 0VPD4JZ, 0VPD4KZ, 0VPD4YZ, 0VPD70Z, 0VPD73Z,
0VPD77Z, 0VPD7JZ, 0VPD7KZ, 0VPD7YZ, 0VPD80Z, 0VPD83Z,
0VPD87Z, 0VPD8JZ, 0VPD8KZ, 0VPD8YZ, 0VPDX0Z, 0VPDX3Z,
0VPS00Z, 0VPS03Z, 0VPS07Z, 0VPS0JZ, 0VPS0KZ, 0VPS0YZ, 0VPS30Z,
0VPS33Z, 0VPS37Z, 0VPS3JZ, 0VPS3KZ, 0VPS3YZ, 0VPS40Z, 0VPS43Z,
0VPS47Z, 0VPS4JZ, 0VPS4KZ, 0VPS4YZ, 0VPS70Z, 0VPS73Z, 0VPS77Z,
0VPS7JZ, 0VPS7KZ, 0VPS7YZ, 0VPS80Z, 0VPS83Z, 0VPS87Z, 0VPS8JZ,

Appendix
Change in Gender on Record and Transgender Adults' Mental or Behavioral Health
Yee et al.

0VPS8KZ, 0VPS8YZ, 0VPSX0Z, 0VPSX3Z, 0VQ50ZZ, 0VQ53ZZ,
0VQ54ZZ, 0VQ5XZZ, 0VQ60ZZ, 0VQ63ZZ, 0VQ64ZZ, 0VQ70ZZ,
0VQ73ZZ, 0VQ74ZZ, 0VQ90ZZ, 0VQ93ZZ, 0VQ94ZZ, 0VQB0ZZ,
0VQB3ZZ, 0VQB4ZZ, 0VQC0ZZ, 0VQC3ZZ, 0VQC4ZZ, 0VQS0ZZ,
0VQS3ZZ, 0VQS4ZZ, 0VQSXZZ, 0VQT0ZZ, 0VQT3ZZ, 0VQT4ZZ,
0VQTXZZ, 0VS90ZZ, 0VS93ZZ, 0VS94ZZ, 0VS98ZZ, 0VSB0ZZ,
0VSB3ZZ, 0VSB4ZZ, 0VSB8ZZ, 0VSC0ZZ, 0VSC3ZZ, 0VSC4ZZ,
0VSC8ZZ, 0VT50ZZ, 0VT54ZZ, 0VT5XZZ, 0VT60ZZ, 0VT64ZZ,
0VT70ZZ, 0VT74ZZ, 0VT90ZZ, 0VT94ZZ, 0VTB0ZZ, 0VTB4ZZ,
0VTC0ZZ, 0VTC4ZZ, 0VTS0ZZ, 0VTS4ZZ, 0VTSXZZ, 0VTT0ZZ,
0VTT4ZZ, 0VTTXZZ, 0VU607Z, 0VU60JZ, 0VU60KZ, 0VU647Z,
0VU64JZ, 0VU64KZ, 0VU687Z, 0VU68JZ, 0VU68KZ, 0VU707Z, 0VU70JZ,
0VU70KZ, 0VU747Z, 0VU74JZ, 0VU74KZ, 0VU787Z, 0VU78JZ,
0VU78KZ, 0VW800Z, 0VW803Z, 0VW807Z, 0VW80JZ, 0VW80KZ,
0VW80YZ, 0VW830Z, 0VW833Z, 0VW837Z, 0VW83JZ, 0VW83KZ,
0VW83YZ, 0VW840Z, 0VW843Z, 0VW847Z, 0VW84JZ, 0VW84KZ,
0VW84YZ, 0VW870Z, 0VW873Z, 0VW877Z, 0VW87JZ, 0VW87KZ,
0VW87YZ, 0VW880Z, 0VW883Z, 0VW887Z, 0VW88JZ, 0VW88KZ,
0VW88YZ, 0VW8X0Z, 0VW8X3Z, 0VW8X7Z, 0VW8XJZ, 0VW8XKZ,
0VWD00Z, 0VWD03Z, 0VWD07Z, 0VWD0JZ, 0VWD0KZ, 0VWD0YZ,
0VWD30Z, 0VWD33Z, 0VWD37Z, 0VWD3JZ, 0VWD3KZ, 0VWD3YZ,
0VWD40Z, 0VWD43Z, 0VWD47Z, 0VWD4JZ, 0VWD4KZ, 0VWD4YZ,
0VWD70Z, 0VWD73Z, 0VWD77Z, 0VWD7JZ, 0VWD7KZ, 0VWD7YZ,
0VWD80Z, 0VWD83Z, 0VWD87Z, 0VWD8JZ, 0VWD8KZ, 0VWD8YZ,
0VWDX0Z, 0VWDX3Z, 0VWDX7Z, 0VWDXJZ, 0VWDXKZ, 0W9M00Z,
0W9M0ZX, 0W9M0ZZ, 0W9M30Z, 0W9M3ZX, 0W9M3ZZ, 0W9M40Z,
0W9M4ZX, 0W9M4ZZ, 0WBM0ZX, 0WBM0ZZ, 0WBM3ZX, 0WBM3ZZ,
0WBM4ZX, 0WBM4ZZ, 0WBMXZX, 0WBMXZZ, 0WPM00Z, 0WPM01Z,
0WPM03Z, 0WPM07Z, 0WPM0JZ, 0WPM0KZ, 0WPM0YZ, 0WPM30Z,
0WPM31Z, 0WPM33Z, 0WPM37Z, 0WPM3JZ, 0WPM3KZ, 0WPM3YZ,
0WPM40Z, 0WPM41Z, 0WPM43Z, 0WPM47Z, 0WPM4JZ, 0WPM4KZ,
0WPM4YZ, 0WPMX0Z, 0WPMX1Z, 0WPMX3Z, 0WPMX7Z, 0WPMXJZ,
0WPMXKZ, 0WPMXYZ, 0WWM00Z, 0WWM01Z, 0WWM03Z,
0WWM07Z, 0WWM0JZ, 0WWM0KZ, 0WWM0YZ, 0WWM30Z,
0WWM31Z, 0WWM33Z, 0WWM37Z, 0WWM3JZ, 0WWM3KZ,
0WWM3YZ, 0WWM40Z, 0WWM41Z, 0WWM43Z, 0WWM47Z,
0WWM4JZ, 0WWM4KZ, 0WWM4YZ, 0WWMX0Z, 0WWMX1Z,
0WWMX3Z, 0WWMX7Z, 0WWMXJZ, 0WWMXKZ, 0WWMXYZ,
3E0N304, 3E0N305, 3E0N30M, 3E0N328, 3E0N329, 3E0N33Z, 3E0N36Z,
3E0N37Z, 3E0N3BZ, 3E0N3GC, 3E0N3HZ, 3E0N3KZ, 3E0N3NZ,
3E0N3SF, 3E0N3TZ, 3E0N4GC, 3E0N704, 3E0N705, 3E0N70M, 3E0N728,
3E0N729, 3E0N73Z, 3E0N76Z, 3E0N77Z, 3E0N7BZ, 3E0N7GC, 3E0N7HZ,
3E0N7KZ, 3E0N7NZ, 3E0N7SF, 3E0N7TZ, 3E0N804, 3E0N805, 3E0N80M,
3E0N828, 3E0N829, 3E0N83Z, 3E0N86Z, 3E0N87Z, 3E0N8BZ, 3E0N8GC,
3E0N8HZ, 3E0N8KZ, 3E0N8NZ, 3E0N8SF, 3E0N8TZ, 3E1N38X, 3E1N38Z,
3E1N78X, 3E1N78Z, 3E1N88X, 3E1N88Z, BV000ZZ, BV001ZZ, BV00YZZ,

Appendix
Change in Gender on Record and Transgender Adults' Mental or Behavioral Health
Yee et al.

BV050ZZ, BV051ZZ, BV05YZZ, BV060ZZ, BV061ZZ, BV06YZZ,
BV080ZZ, BV081ZZ, BV08YZZ, BV100ZZ, BV101ZZ, BV10YZZ,
BV10ZZZ, BV180ZZ, BV181ZZ, BV18YZZ, BV18ZZZ, BV30Y0Z,
BV30YZZ, BV30ZZZ, BV34Y0Z, BV34YZZ, BV34ZZZ, BV35Y0Z,
BV35YZZ, BV35ZZZ, BV36Y0Z, BV36YZZ, BV36ZZZ, BV37Y0Z,
BV37YZZ, BV37ZZZ, BV44ZZZ, BV4BZZZ, CV191ZZ, CV19YZZ,
CV1YYZZ, DV010ZZ, DV011ZZ, DV012ZZ, DV013Z0, DV013ZZ,
DV014ZZ, DV015ZZ, DV016ZZ, DV1197Z, DV1198Z, DV1199Z,
DV119BZ, DV119CZ, DV119YZ, DV11B7Z, DV11B8Z, DV11B9Z,
DV11BBZ, DV11BCZ, DV11BYZ, DV21DZZ, DV21HZZ, DV21JZZ,
DVY17ZZ, DVY18ZZ, DVY1FZZ

Appendix
Change in Gender on Record and Transgender Adults' Mental or Behavioral Health
Yee et al.

Appendix Table 2. Gender-Affirming Surgeries Procedure Codes

Code system	Codes
Masculinizing surgery (for use in female sex assigned at birth individuals): phalloplasty	
CPT/HCPCS	00938, 54400, 54401, 54405, 55110, 55899, 55980, 54300, 54328, 54332, 54336, 54352, 54380, 54385, 54390, 54406, 54408, 54410, 54411, 54415, 54416, 54417, 54430, 54435, 54440, C1813, C2622
ICD9PCS	6443, 6444, 6495, 6497, 99639
ICD10PCS	0VUS07Z, 0VUS0JZ, 0VUS0KZ, 0VUS47Z, 0VUS4JZ, 0VUS4KZ, 0VUSX7Z, 0VUSXJZ, 0VUSXKZ, 0W4N071, 0W4N0J1, 0W4N0K1, 0W4N0Z1, T83410A, T83420A, T83490A, Z9071
Feminizing surgery (for use in male sex assigned at birth individuals): vaginoplasty	
CPT/HCPCS	56800, 57291, 57292, 57295, 57296, 57335, 57426, 57400
ICD9PCS	706, 7061, 7061, 7062, 7063, 7064
ICD10PCS	0UUG07Z, 0UUG0JZ, 0UUG0KZ, 0UUG47Z, 0UUG4JZ, 0UUG4KZ, 0UUG77Z, 0UUG7JZ, 0UUG7KZ, 0UUG87Z, 0UUG8JZ, 0UUG8KZ, 0UUGX7Z, 0UUGXJZ, 0UUGXKZ, 0W4M070, 0W4M0J0, 0W4M0K0, 0W4M0Z0
Urethroplasty (for use in all individuals)	
CPT/HCPCS	51102, 52000, 53400, 53405, 53420, 53425, 53430, 53899, 57311, 53215, 53410, 53415, 53431, 53505, 53510, 53515, 53520, 53600, 53601, 53605, 53620, 53621, 54308, 54312, 54316, 54318, 54322, 54324, 54326, 54340, 54344, 54348, 57220, 57230
Masculinizing surgery (for use in female sex assigned at birth individuals), non-phalloplasty	
CPT/HCPCS	15756, 15757, 15758, 19301, 19302, 19303, 19304, 19318, 20970, 20972, 54660, 55120, 55175, 55180, 57106, 57110, 57120, 19300, 51925, 57107, 57109, 57111, 57112, 57700, 57720, 00846, 00906, L8699
ICD9PCS	627, 6501, 6509, 6531, 6539, 6541, 6549, 6551, 6552, 6553, 6554, 6561, 6562, 6563, 6564, 6651, 674, 683, 6831, 6839, 684, 6841, 6849, 685, 6851, 6859, 686, 6861, 6869, 687, 6871, 6879, 689, 704, 7162, 7162, 852, 8523, 8531, 8532, 8534, 8536, 8541, 8542, 8543, 8544, 8545, 8546, 8547, 8548, 8586, 8587
ICD10PCS	07T50ZZ, 07T60ZZ, 07T70ZZ, 07T80ZZ, 07T90ZZ, 0H5T0ZZ, 0H5T3ZZ, 0H5T7ZZ, 0H5T8ZZ, 0H5TXZZ, 0H5U0ZZ, 0H5U3ZZ, 0H5U7ZZ, 0H5U8ZZ, 0H5UXZZ, 0H5V0ZZ, 0H5V3ZZ, 0H5V7ZZ, 0H5V8ZZ, 0H5VXZZ, 0HBV0ZZ, 0HBV3ZZ, 0HBV7ZZ, 0HBV8ZZ, 0HBVXZZ, 0HMXZZ, 0HMXZZ, 0HSWXZZ, 0HSXXZZ, 0HTT0ZZ, 0HTU0ZZ, 0HTV0ZZ, 0UT92ZL, 0VR90JZ, 0VRB0JZ, 0VRC0JZ, 0VU907Z, 0VU90JZ, 0VU90KZ, 0VUB07Z, 0VUB0JZ, 0VUB0KZ, 0VUC07Z, 0VUC0JZ, 0VUC0KZ, Z9072, Z90721, Z90722
Feminizing surgery (for use in male sex assigned at birth individuals), non-vaginoplasty	
CPT/HCPCS	19324, 19325, 19340, 19342, 19357, 19366, 52601, 54125, 54520, 54690, 55970, 54120, 54130, 54135, 54522, 54530, 54535, 55150, C1789, L8000, L8001, L8002, L8010, L8015, L8020, L8030, L8031, L8035, L8039

Appendix
Change in Gender on Record and Transgender Adults' Mental or Behavioral Health
Yee et al.

ICD9PCS	3199, 623, 6241, 6242, 643, 645, 7641, 7642, 7643, 7644, 7645, 7646, 7661, 7662, 7663, 7664, 7665, 7666, 7667, 7668, 7669, 855, 8550, 8551, 8552, 8553, 8554, 8555, 8559, 8589, 8595, 8596, 8682, 87, 871, 872, 873, 874, 881, 882, 883, 884, 885, 886, 887, 889, V524
ICD10PCS	0H0T07Z, 0H0T0JZ, 0H0T0KZ, 0H0T37Z, 0H0T3JZ, 0H0T3KZ, 0H0T3ZZ, 0H0TX7Z, 0H0TXJZ, 0H0TXKZ, 0H0U07Z, 0H0U0JZ, 0H0U0KZ, 0H0U37Z, 0H0U3JZ, 0H0U3KZ, 0H0UX7Z, 0H0UXJZ, 0H0UXKZ, 0H0V07Z, 0H0V0JZ, 0H0V0KZ, 0H0V37Z, 0H0V3JZ, 0H0V3KZ, 0H0VX7Z, 0H0VXJZ, 0H0VXKZ, 0HRT07Z, 0HRT0JZ, 0HRT0KZ, 0HRT37Z, 0HRT3JZ, 0HRT3KZ, 0HRT3KZ, 0HRTX7Z, 0HRTXJZ, 0HRTXKZ, 0HRU07Z, 0HRU0JZ, 0HRU0JZ, 0HRU0KZ, 0HRU37Z, 0HRU3JZ, 0HRU3KZ, 0HRUX7Z, 0HRUXJZ, 0HRUXKZ, 0HRV07Z, 0HRV0JZ, 0HRV0KZ, 0HRV37Z, 0HRV3JZ, 0HRV3KZ, 0HRVX7Z, 0HRVXJZ, 0HRVXKZ, 0HUT07Z, 0HUT0JZ, 0HUT0KZ, 0HUT37Z, 0HUT3JZ, 0HUT3JZ, 0HUT3KZ, 0HUT77Z, 0HUT7JZ, 0HUT7KZ, 0HUT87Z, 0HUT8JZ, 0HUT8KZ, 0HUTX7Z, 0HUTXJZ, 0HUTXKZ, 0HUU07Z, 0HUU0JZ, 0HUU0KZ, 0HUU37Z, 0HUU3JZ, 0HUU3JZ, 0HUU3KZ, 0HUU77Z, 0HUU7JZ, 0HUU7KZ, 0HUU87Z, 0HUU8JZ, 0HUU8KZ, 0HUUX7Z, 0HUUXJZ, 0HUUXKZ, 0HUV07Z, 0HUV0JZ, 0HUV0KZ, 0HUV37Z, 0HUV3JZ, 0HUV3KZ, 0HUV77Z, 0HUV7JZ, 0HUV7KZ, 0HUV87Z, 0HUV8JZ, 0HUV8KZ, 0HUVX7Z, 0HUVXJZ, 0HUVXKZ, 0HRT0JZ, 0HRT0KZ, Z4430

Appendix Table 3. Gender-Affirming Hormones Drug Names

Feminizing hormones (for use in male sex assigned at birth individuals)
ALORA
AMABELZ
AUROVELA
BLISOVI 24 FE
CENESTIN
CLIMARA
CLIMARA PRO
CONJUGATED ESTROGENS
CONJUGATED ESTROGENS AND MEDROXYPROGESTERONE ACETATE
DELESTROGEN
DEPO-ESTRADIOL
DIVIGEL
DROSPIRENONE AND ETHINYL ESTRADIOL
EEMT
ELESTRIN
ENJUVIA
ESTARYLLA
ESTERIFIED ESTROGENS
ESTERIFIED ESTROGENS AND METHYLTESTOSTERONE
ESTRACE
ESTRADERM (ESTRADIOL) PATCH, EXTENDED RELEASE
ESTRADIOL
ESTRADIOL AND NORETHINDRONE ACETATE
ESTRADIOL VALERATE
ESTRASORB
ESTRING
ESTROGEL
ESTROGEN (FOLLICULINUM, OOPHORINUM) LIQUID
ESTROGEN PHENOLIC
ESTROGENS, CONJUGATED
ESTROGENS, ESTERIFIED
ESTROGENS, ESTERIFIED AND METHYLTESTOSTERONE
ESTROPIPATE
ESTROSTEP FE
EVAMIST
FEMYNOR (NORGESTIMATE AND ETHINYL ESTRADIOL) KIT
FYAVOLV
GENERESS
GIANVI
GILDESS
GUNA-BETA-ESTRADIOL (ESTRADIOL) SOLUTION/ DROPS
HAILEY FE
IMVEXXY
INNOFEM (ESTRADIOL) TABLET

Appendix
Change in Gender on Record and Transgender Adults' Mental or Behavioral Health
Yee et al.

JALYN (DUTASTERIDE AND TAMSULOSIN HYDROCHLORIDE) CAPSULE
JEVANTIQUE LO (NORETHINDRONE ACETATE AND ETHINYL ESTRADIOL)
TABLET
JINTELI (NORETHINDRONE ACETATE AND ETHINYL ESTRADIOL) TABLET
JUNEL
LARIN
LO LOESTRIN FE
LO MINASTRIN FE
LOESTRIN 24 FE
LOESTRIN FE
LOMEDIA 24 FE (NORETHINDRONE ACETATE AND ETHINYL ESTRADIOL) KIT
LOPREEZA
MENEST
MENOSTAR
MIBELAS
MICROGESTIN
MILI
MINASTRIN
MINASTRIN 24 FE
MINIVELLE
MONO-LINYAH
MONONESSA
MONONESSA / TRINESSA (NORGESTIMATE AND ETHINYL ESTRADIOL) KIT
NORETHINDRONE
NORETHINDRONE ACETATE
NORETHINDRONE ACETATE AND ETHINYL ESTRADIOL
NORETHINDRONE ACETATE AND ETHINYL ESTRADIOL AND FERROUS
FUMARATE
NORETHINDRONE ACETATE MICRONIZED
NORETHISTERONE ACETATE
NORGESTIMATE
NORGESTIMATE AND ETHINYL ESTRADIOL
NORGESTIMATE MICRONIZED
ORTHO TRI CYCLEN
ORTHO TRI CYCLEN LO (NORGESTIMATE AND ETHINYL ESTRADIOL) KIT
PHILITH
PREFEST- ESTRADIOL/NORGESTIMATE
PREMARIN
PREMPHASE
PREMPRO
PREVIFEM
SPRINTEC
TARINA
TILIA FE
TRI FEMYNOR
TRI-ESTARYLLA

Appendix
Change in Gender on Record and Transgender Adults' Mental or Behavioral Health
Yee et al.

TRI-LEGEST FE 28 DAY (NORETHINDRONE ACETATE AND ETHINYL ESTRADIOL) KIT
TRI-LINYAH
TRI-LO- ESTARYLLA
TRI-LO-MARZIA
TRI-LO-SPRINTEC
TRI-MILI
TRINESSA
TRINESSA LO (NORGESTIMATE AND ETHINYL ESTRADIOL) KIT
TRI-PREVIFEM
TRI-SPRINTEC
VAGIFEM
VIVELLE-DOT

Masculinizing hormones (for use in female sex assigned at birth individuals)

ANDRODERM
ANDROGEL
ANDROID - METHYLTESTOSTERONE CAPSULE
ANDROXY
AXIRON
DELATESTRYL- TESTOSTERONE ENANTHATE INJECTION, SOLUTION
DEPO-TESTOSTERONE
FLUOXYMESTERONE
FORTESTA
NATESTO
STRIANT
TESTIM
TESTOPEL
TESTOSTERONE
TESTOSTERONE CYPIONATE
TESTOSTERONE CYPIONATE
TESTOSTERONE DECANOATE
TESTOSTERONE ENANTATE
TESTOSTERONE ENANTHATE
TESTOSTERONE EP-USP
TESTOSTERONE ISOCAPROATE
TESTOSTERONE PHENYLPROPIONATE
TESTOSTERONE PROPIONATE
TESTOSTERONE UNDECANOAT
TESTOSTERONE UNDECANOATE
TETSOTERON MICRONIZED
VOGELXO
XYOSTED

Appendix
Change in Gender on Record and Transgender Adults' Mental or Behavioral Health
Yee et al.

Appendix Table 4. Characteristics of the 2010–2019 Oregon Medicaid Transgender and Nonbinary Sample, Including Unknown Sex Assigned at Birth

Characteristic	Assigned female sex at birth		Assigned male sex at birth		Unknown sex assigned at birth	
	Female gender (N=836)	Male gender (N=303)	Male gender (N=898)	Female gender (N=449)	Female gender (N=166)	Male gender (N=288)
Age, years						
18–25	105 (12.6)	28 (9.2)	86 (9.6)	38 (8.5)	17 (10.2)	22 (7.6)
26–35	546 (65.3)	187 (61.7)	502 (55.9)	251 (55.9)	116 (69.9)	175 (60.8)
36–45	129 (15.4)	50 (16.5)	169 (18.8)	86 (19.2)	18 (10.8)	53 (18.4)
46–55	37 (4.4)	27 (8.9)	94 (10.5)	52 (11.6)	11 (6.6)	28 (9.7)
55–64	19 (2.3)	11 (3.6)	47 (5.2)	22 (4.9)	4 (2.4)	10 (3.5)
Race/ethnicity						
Non-Hispanic White	575 (68.8)	176 (58.1)	614 (68.4)	254 (56.6)	109 (65.7)	175 (60.8)
Hispanic	61 (7.3)	31 (10.2)	55 (6.1)	28 (6.2)	10 (6.0)	16 (5.6)
Other	51 (6.1)	15 (5.0)	52 (5.7)	24 (5.3)	9 (5.4)	26 (9.0)
Unknown	149 (17.8)	81 (26.7)	177 (19.7)	143 (31.8)	38 (22.9)	71 (24.7)
Residence in Portland metro	521 (62.3)	205 (67.7)	540 (60.1)	327 (72.8)	105 (63.3)	162 (56.2)
Years enrollment	4.00 (2.42–5.92)	4.00 (2.42–5.92)	3.00 (1.50–4.46)	2.58 (1.42–4.75)	1.92 (1.17–3.58)	2.92 (1.31–4.92)

Notes: Age represents age at first gender identity-related diagnosis. Other race/ethnicity includes Black, Asian, and Alaskan Native/American Indian populations. Years enrollment is reported as median (IQR), while all other values are N (%).

Appendix
Change in Gender on Record and Transgender Adults' Mental or Behavioral Health
Yee et al.

Appendix Table 5. Primary Multivariable Modeling Results Including Unknown Sex Assigned at Birth

Outcomes	Assigned female sex at birth		Assigned male sex at birth		Unknown sex assigned at birth	
	Female gender (N=836)	Male gender (N=303)	Male gender (N=898)	Female gender (N=449)	Female gender (N=166)	Male gender (N=288)
	% (95% CI)	% (95% CI)	% (95% CI)	% (95% CI)	% (95% CI)	% (95% CI)
Anxiety	73.72 (71.82, 75.52)	50.09 (45.32, 54.86)	58.50 (55.86, 61.08)	47.68 (43.56, 51.83)	61.61 (58.12, 64.98)	49.81 (46.10, 53.52)
Depression	78.10 (76.33, 79.78)	54.15 (49.36, 58.87)	69.69 (67.21, 72.07)	59.15 (54.98, 63.20)	70.88 (67.64, 73.91)	61.75 (58.11, 65.26)
Suicide	25.06 (23.29, 26.91)	9.31 (7.10, 12.11)	20.43 (18.44, 22.57)	14.51 (12.00, 17.44)	22.82 (20.07, 25.83)	15.64 (13.26, 18.35)
Posttraumatic stress disorder	38.17 (36.05, 40.33)	15.97 (13.18, 19.21)	22.38 (20.31, 24.59)	18.45 (15.76, 21.48)	22.88 (19.94, 26.10)	16.74 (14.26, 19.57)
Alcohol use disorders	6.18 (5.25, 7.26)	2.42 (1.58, 3.68)	5.22 (4.28, 6.35)	2.65 (1.86, 3.75)	2.42 (1.59, 3.68)	5.48 (4.16, 7.17)
Substance use disorders	12.39 (11.06, 13.85)	4.46 (3.17, 6.22)	11.90 (10.39, 13.59)	5.70 (4.38, 7.38)	6.40 (4.89, 8.34)	9.19 (7.40, 11.36)
Tobacco use disorders	15.31 (13.72, 17.04)	6.09 (4.69, 7.87)	13.83 (12.15, 15.71)	5.28 (4.15, 6.71)	6.20 (4.78, 8.02)	8.74 (7.06, 10.77)

Notes: Models adjusted for race and ethnicity, residence in Portland metro, age, and years enrolled. Age was calculated as age at time of first diagnosis of the condition, or age at the study midpoint (June 30, 2014) for those without the condition. Years of enrollment was calculated as time from enrollment to first diagnosis of the condition, or as total years of enrollment among those without the condition. Total adult cohort includes unknown sex assigned at birth.

Appendix
Change in Gender on Record and Transgender Adults' Mental or Behavioral Health
Yee et al.

Appendix Table 6. Sensitivity Analysis 1: Multivariable Modeling Results Using Modified Definition of Change in Gender on Record

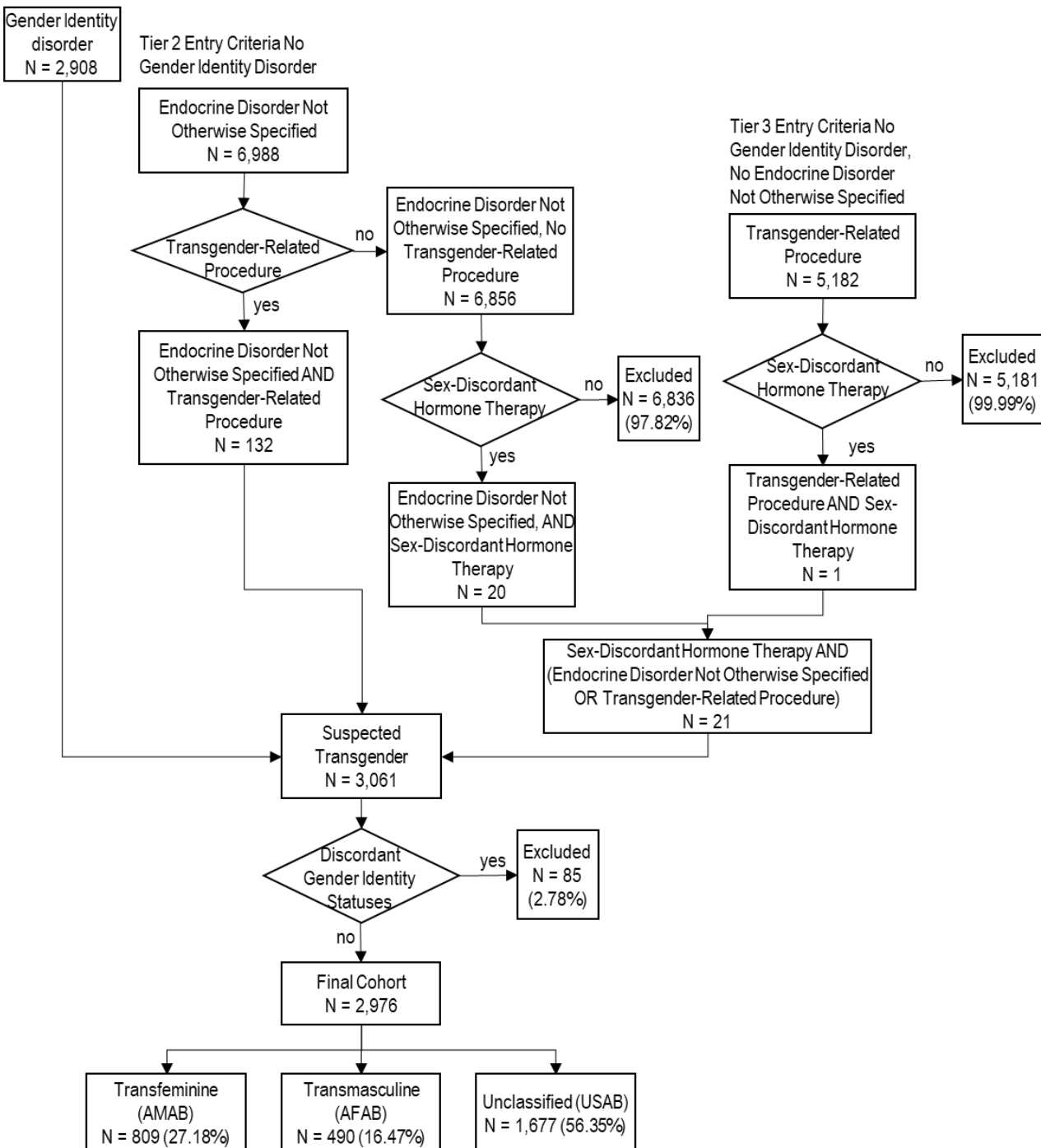
Outcomes	Assigned female sex at birth		Assigned male sex at birth		Unknown sex assigned at birth	
	Female gender (N=655)	Male gender (N=484)	Male gender (N=613)	Female gender (N=734)	Female gender (N=184)	Male gender (N=270)
	% (95% CI)	% (95% CI)	% (95% CI)	% (95% CI)	% (95% CI)	% (95% CI)
Anxiety	72.21 (68.29, 75.82)	62.33 (57.45, 86.97)	54.53 (50.08, 58.91)	56.82 (52.79, 60.76)	38.23 (31.01, 46.01)	41.89 (35.63, 48.43)
Depression	75.68 (71.87, 79.12)	65.45 (60.57, 70.04)	68.72 (64.47, 72.68)	69.55 (65.68, 73.17)	49.22 (41.29, 57.18)	54.85 (48.18, 61.35)
Suicide	12.09 (9.73, 14.94)	9.21 (6.99, 12.04)	13.40 (10.89, 16.38)	13.76 (11.42, 16.49)	5.15 (3.14, 8.33)	8.27 (5.83, 11.60)
Posttraumatic stress disorder	39.50 (35.36, 43.80)	27.10 (23.06, 31.56)	20.78 (17.56, 24.42)	26.28 (22.99, 29.87)	12.08 (8.43, 17.01)	15.29 (11.61, 19.86)
Alcohol use disorders	8.83 (6.83, 11.36)	5.94 (4.23, 8.26)	6.76 (5.10, 8.90)	5.52 (4.16, 7.29)	3.06 (1.62, 5.70)	6.86 (4.68, 9.95)
Substance use disorders	15.12 (12.44, 18.25)	8.90 (6.70, 11.73)	14.14 (11.59, 17.14)	11.56 (9.45, 14.06)	7.43 (4.76, 11.43)	11.08 (8.11, 14.96)
Tobacco use disorders	19.44 (16.11, 23.28)	12.90 (10.10, 16.34)	17.35 (14.23, 21.00)	11.97 (9.68, 14.72)	8.49 (5.79, 12.29)	10.43 (7.62, 14.10)

Notes: Whereas the primary results defined self-reported gender using the gender reported at initial enrollment, this analysis used a modified definition of gender as an enrolled gender that differed from sex assigned at birth at any time during the study period. Models adjusted for race and ethnicity, residence in Portland metro, age, and years enrolled. Age was calculated as age at time of first diagnosis of the condition, or age at the study midpoint (June 30, 2014) for those without the condition. Years of enrollment was calculated as time from enrollment to first diagnosis of the condition, or as total years of enrollment among those without the condition.

Appendix
Change in Gender on Record and Transgender Adults' Mental or Behavioral Health
Yee et al.

Appendix Figure 1. Application of alternative method (Jasuja 2020) for identifying transgender and nonbinary beneficiaries in administrative claims.

Tier 1 Entry Criteria
 Gender Identity Disorder



Note: Figure reproduced from Jasuja et al., *Medical Care* 2020, although numbers reflect the algorithm results from 2010–2019 Oregon Medicaid beneficiaries.

AFAB, assigned female sex at birth; AMAB, assigned male sex at birth; USAB, unknown sex assigned at birth.

Appendix
Change in Gender on Record and Transgender Adults' Mental or Behavioral Health
Yee et al.

Appendix Table 7. Comparison of Sex Assigned at Birth Inference in Present Study to Alternative Method (Jasuja 2020)

Category in Yee et. al. method:	Category in Jasuja et. al. method:			
	Transmasculine (AFAB)	Transfeminine (AMAB)	Unclassified (USAB)	Individual not included
AFAB	329	25	762	23
AMAB	5	745	513	84
USAB	22	22	397	13
Individual not included	134	17	5	–

AFAB, assigned female sex at birth; AMAB, assigned male sex at birth; USAB, unknown sex assigned at birth.

Appendix
Change in Gender on Record and Transgender Adults' Mental or Behavioral Health
Yee et al.

Appendix Table 8. Sensitivity Analysis 2: Multivariable Modeling Results Using Alternative Method (Jasuja 2020) of Inferring Sex Assigned at Birth

Outcomes	Assigned female sex at birth		Assigned male sex at birth		Unknown sex assigned at birth	
	Female gender (N=472)	Male gender (N=69)	Male gender (N=740)	Female gender (N=18)	Female gender (N=989)	Male gender (N=688)
	% (95% CI)	% (95% CI)	% (95% CI)	% (95% CI)	% (95% CI)	% (95% CI)
Anxiety	79.02 (74.84, 82.66)	76.42 (63.96, 85.55)	60.17 (56.18, 64.02)	60.01 (33.18, 81.93)	53.46 (49.97, 56.91)	49.10 (44.96, 53.26)
Depression	82.84 (78.93, 86.15)	77.98 (65.07, 87.06)	73.19 (69.55, 76.55)	74.09 (45.50, 90.73)	63.27 (59.80, 66.60)	59.84 (55.65, 63.89)
Suicide	15.54 (12.22, 19.56)	13.84 (7.37, 24.48)	14.81 (12.36, 17.66)	4.68 (0.63, 27.58)	8.72 (7.14, 10.61)	8.15 (6.44, 10.26)
Posttraumatic stress disorder	44.13 (38.95, 49.43)	46.90 (33.73, 60.50)	25.08 (21.83, 28.64)	19.72 (6.92, 44.80)	24.22 (21.46, 27.21)	15.98 (13.42, 18.92)
Alcohol use disorders	10.95 (8.19, 14.48)	9.78 (4.80, 18.91)	7.39 (5.75, 9.45)	7.24 (1.67, 26.34)	4.66 (3.57, 6.06)	5.79 (4.39, 7.60)
Substance use disorders	23.28 (19.28, 27.83)	14.22 (7.66, 24.90)	14.99 (12.55, 17.81)	16.47 (5.85, 38.50)	9.19 (7.56, 11.12)	9.64 (7.75, 11.94)
Tobacco use disorders	31.21 (25.97, 36.98)	21.40 (12.13, 34.96)	19.78 (16.58, 23.42)	14.57 (3.99, 41.17)	9.77 (8.01, 11.86)	11.88 (9.63, 14.56)

Notes: Models adjusted for race and ethnicity, residence in Portland metro, age, and years enrolled. Age was calculated as age at time of first diagnosis of the condition, or age at the study midpoint (June 30, 2014) for those without the condition. Years of enrollment was calculated as time from enrollment to first diagnosis of the condition, or as total years of enrollment among those without the condition.