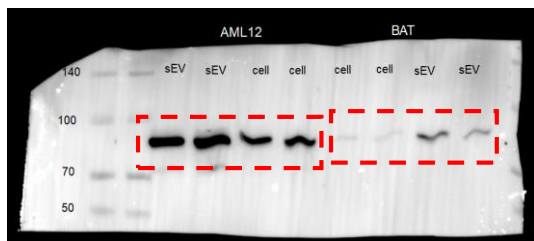
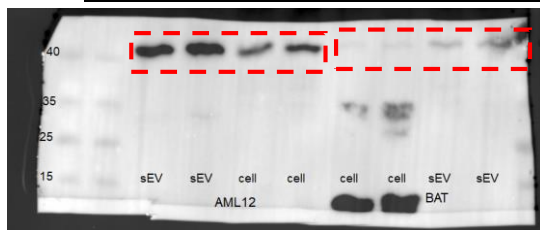


a **Alix** (abcam ab186429, predicted size 97.80 kDa)



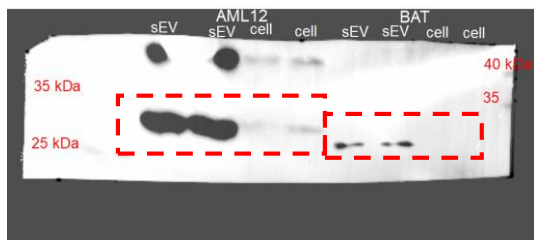
Note: BAT samples loaded in inverted order by error when loading gel

TSG101 (Santa Cruz sc-7964, predicted size 45 kDa)

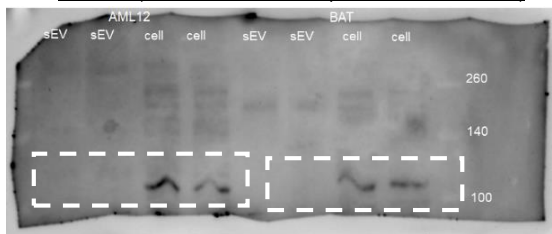


Note: same as Alix, as they come from the same blot

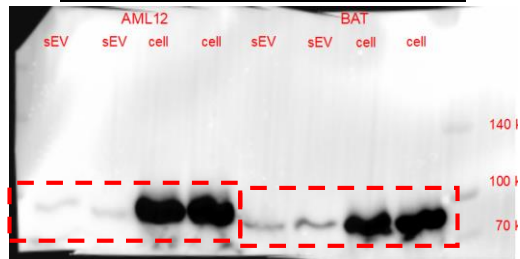
CD9 (abcam ab92726, predicted size 25 kDa)



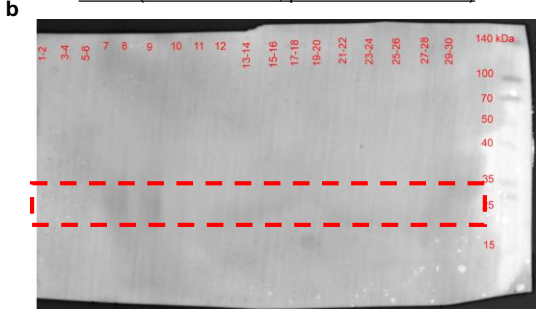
GM130 (Santa Cruz sc-55590, predicted size 130 kDa)



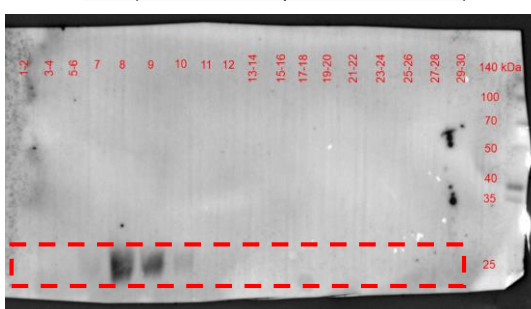
CANX (abcam ab22595, predicted size 90 kDa)



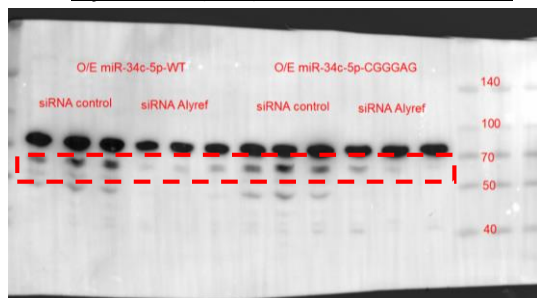
CD63 (abcam ab68418, predicted size 25 kDa)



CD9 (abcam ab92726, predicted size 25 kDa)

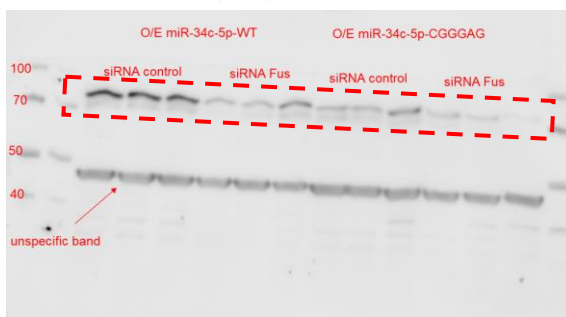


Alyref (Cell Signaling 12655, predicted size 70 kDa)

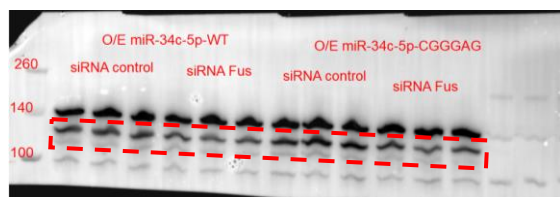


Note: brighter band at the top is likely a posttranscriptional-modified Alyref, larger than predicted size. In any case, it follows same behavior as selected.

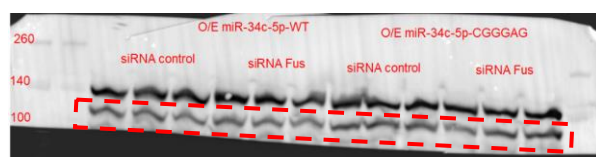
Fus (Cell Signaling 4885, predicted size 70 kDa)



Vinculin for Alyref blot (Millipore-Sigma MAB3574, predicted size 117 kDa)



Vinculin for Fus blot (Millipore-Sigma MAB3574, predicted size 117 kDa)



Note for vinculin: selected only band that is between 100-140 kDa. In any case, all bands follow same behavior.