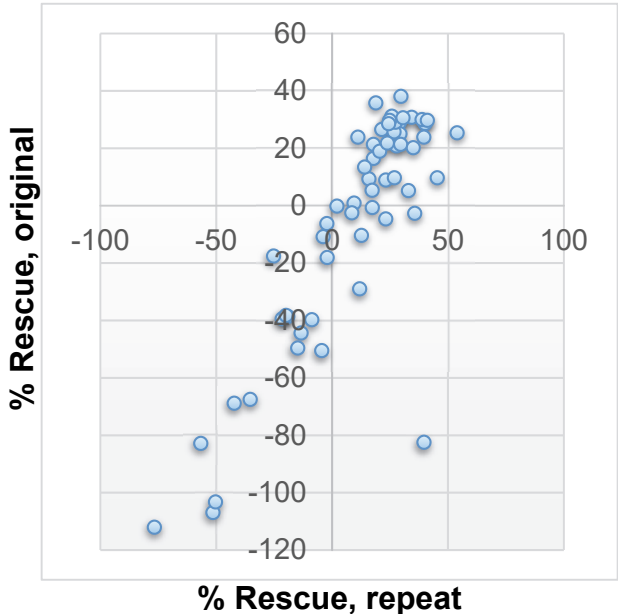


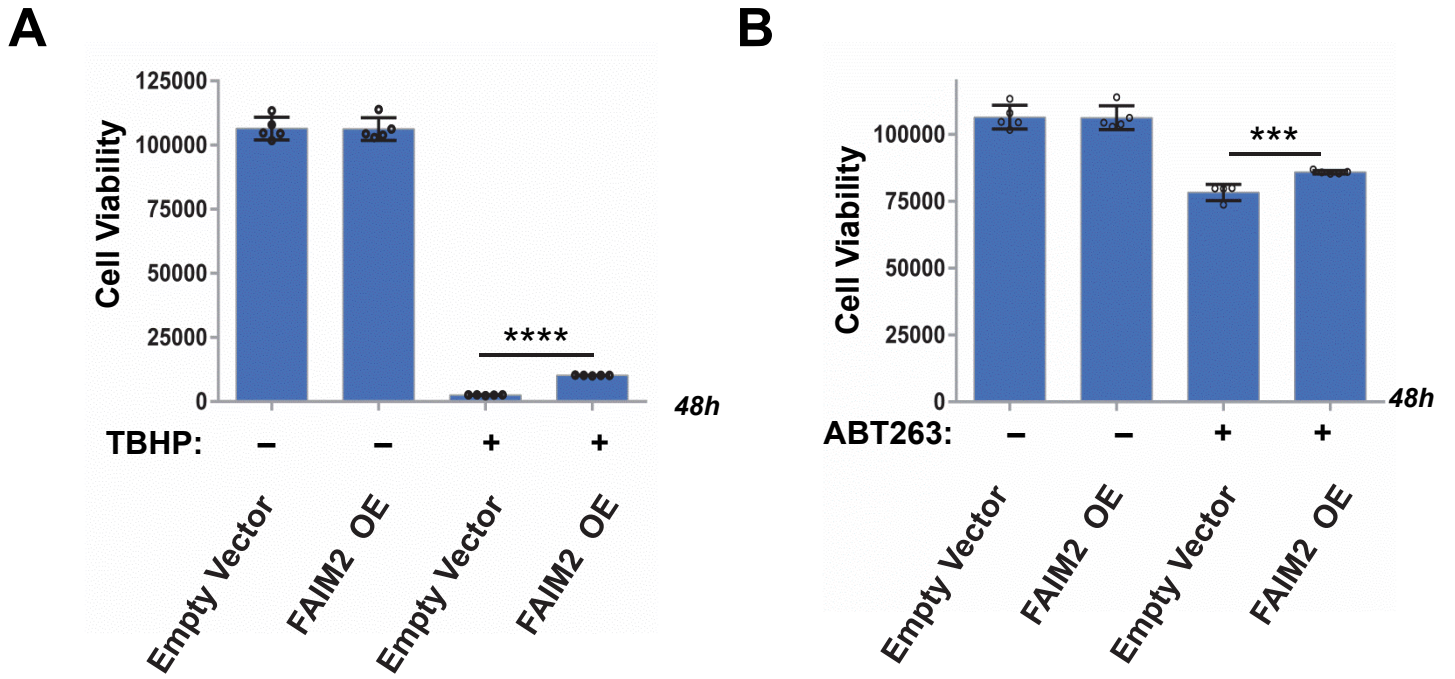
Figure S1

Correlation between duplicate tests



Replicate testing: Plate 19. Correlation coefficient for this data is 0.85.

Figure S2



Testing the effect of FAIM2 overexpression on cell death due to oxidative stress or BCL2 inhibition. (A) LHCN-M2 cells transduced with FAIM2 or an empty vector control exposed to 100 μ M tert-butyl hydrogen peroxide (tBHP). (B) The same cells exposed to 25 μ M ABT263.