

Fig 1B

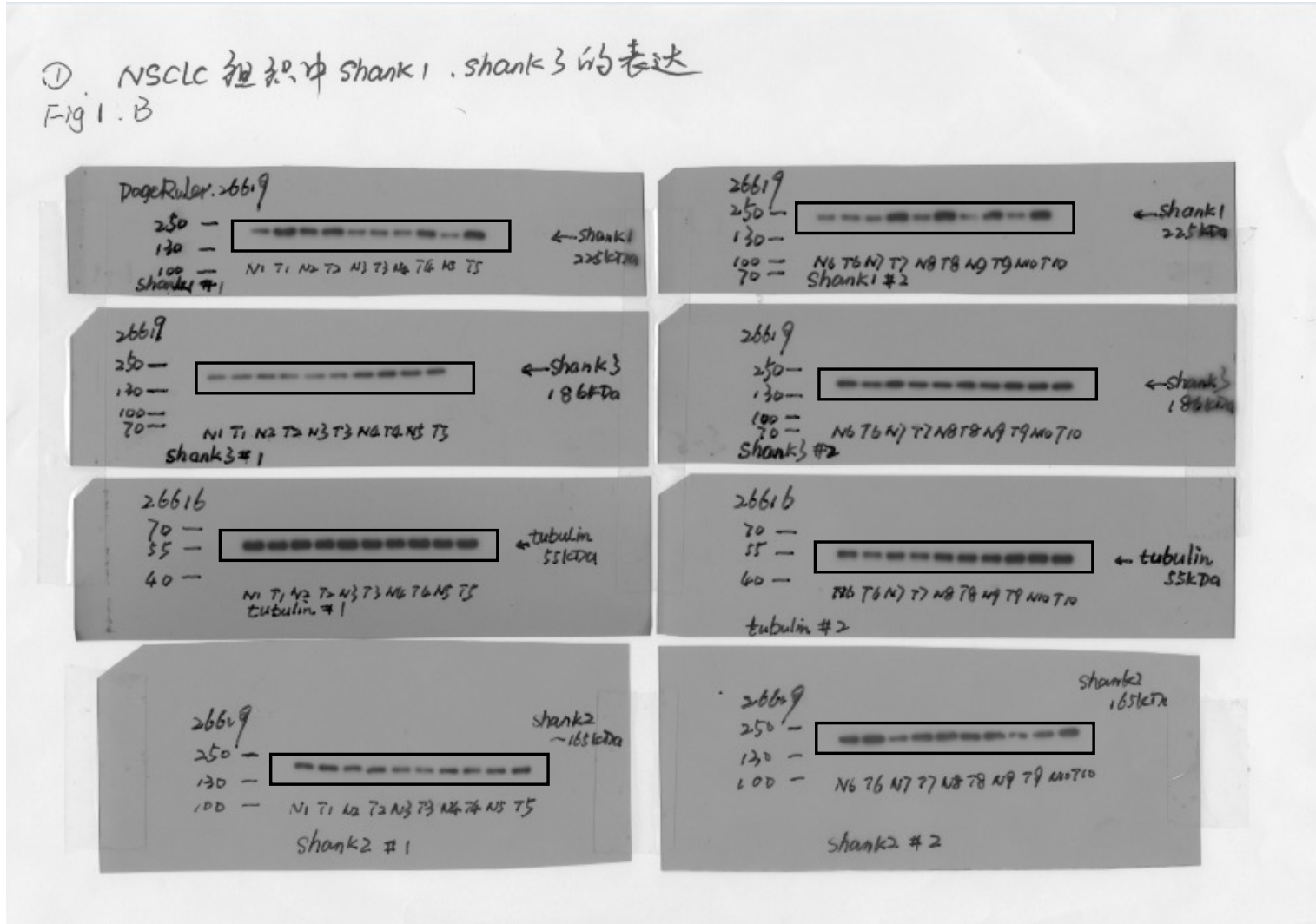


Fig 1F

②. Shank 1 / 2 / 3 在各细胞系中的表达.

Fig 1-F

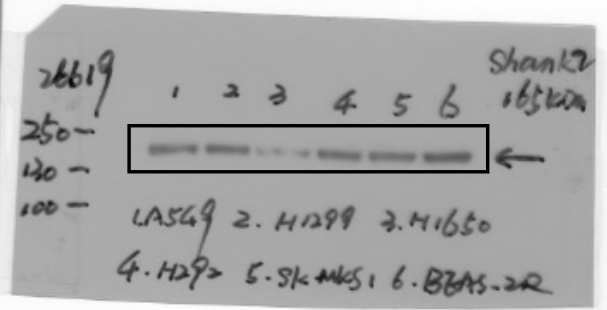
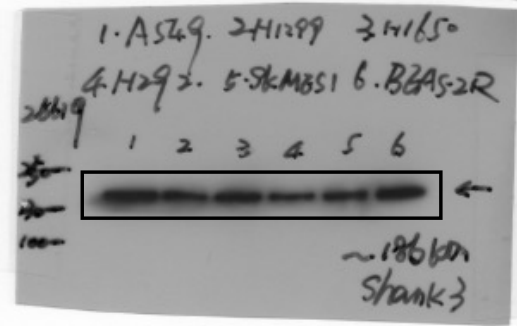
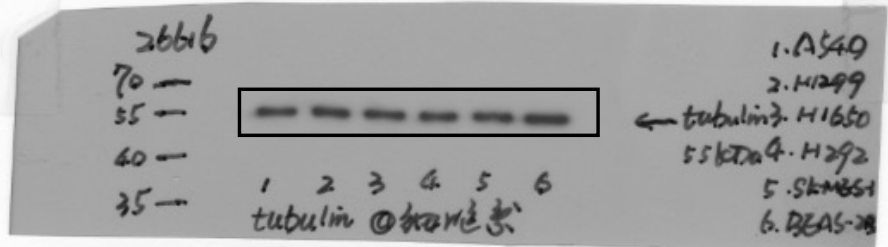
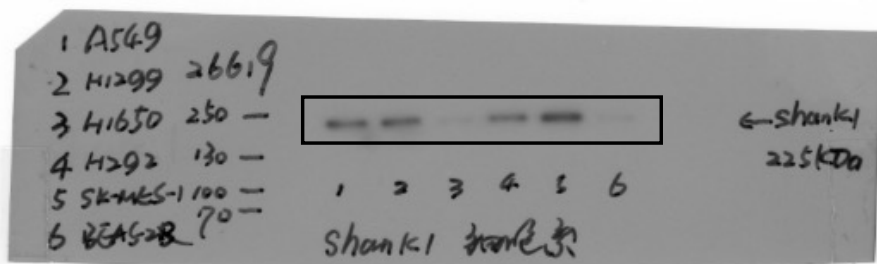


Fig 2B

③ 干扰效率及筛选

Fig2.

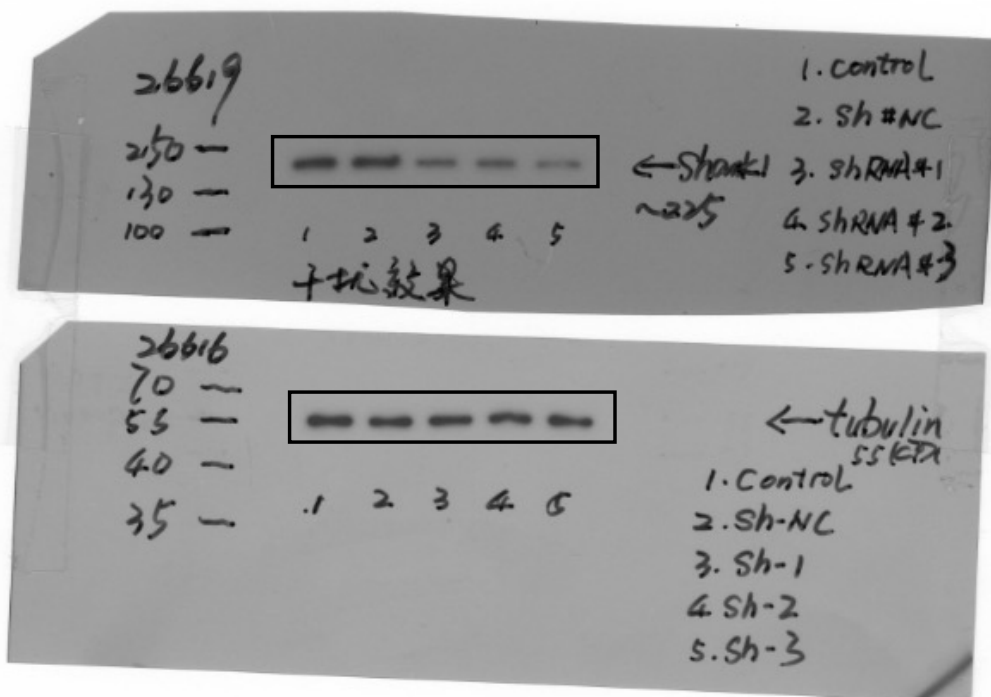


Fig 2J 2K

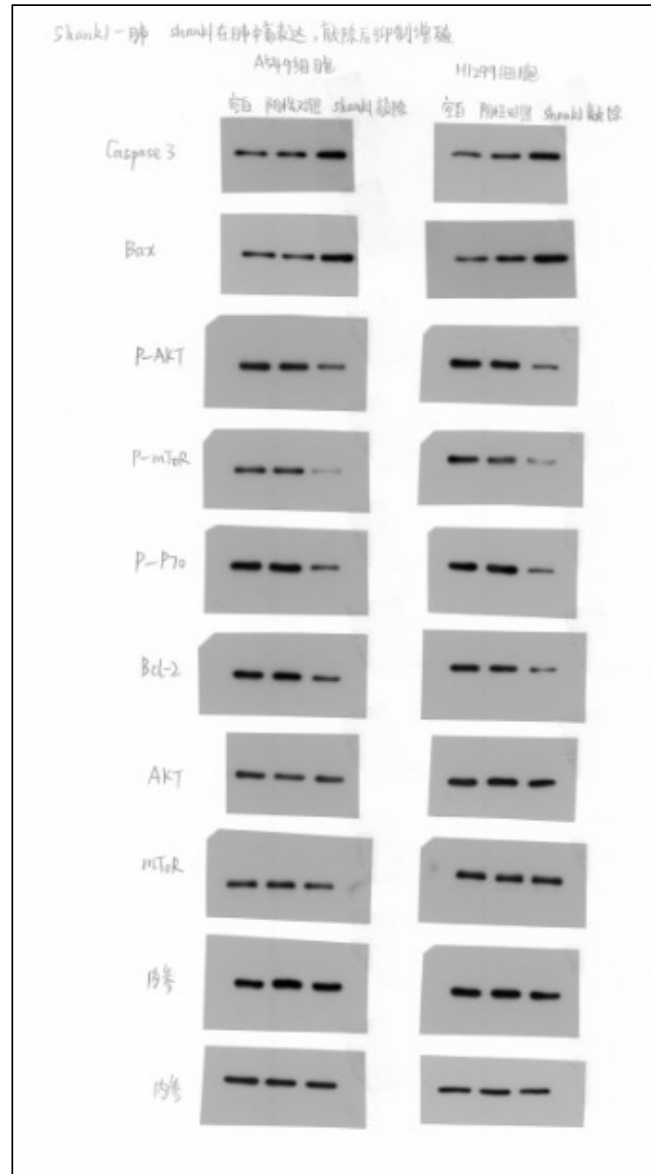


Fig 3A

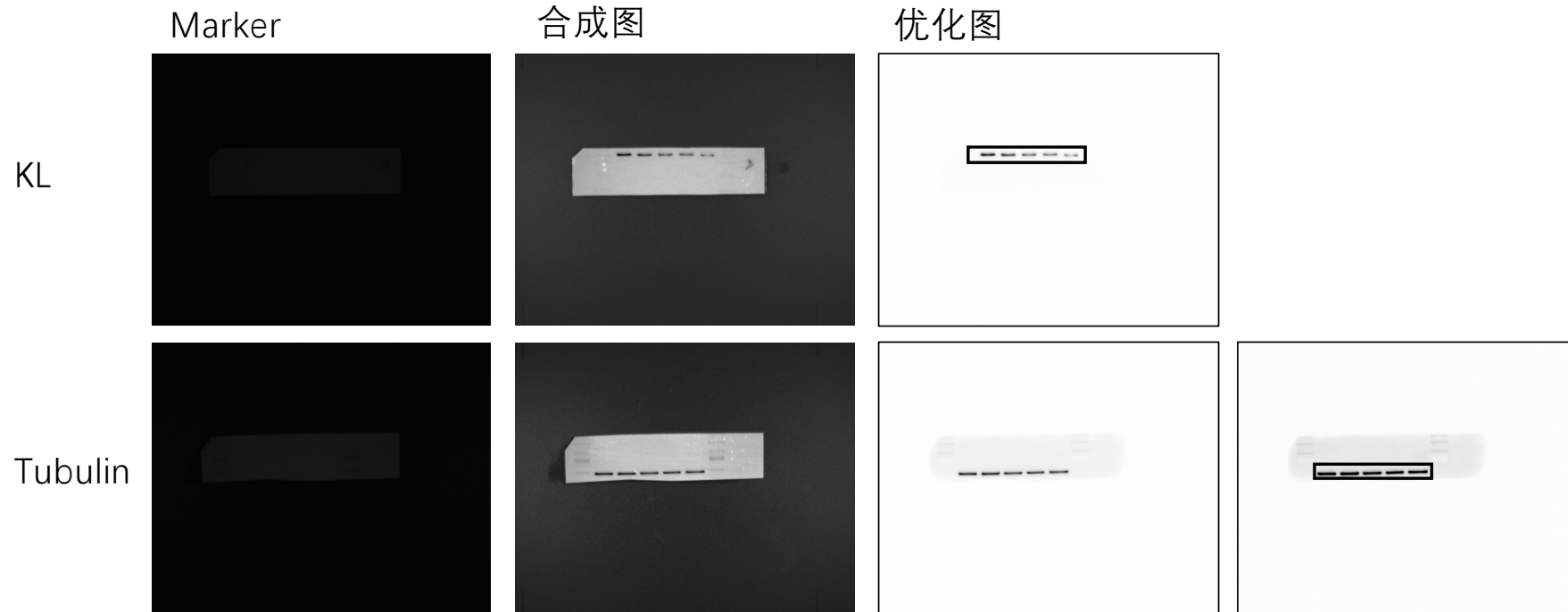
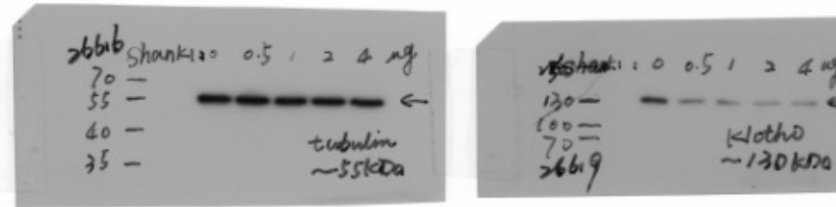


Fig 3C

Fig 3A① shank1 对 KL 影响



3C.② shank1 与 KL

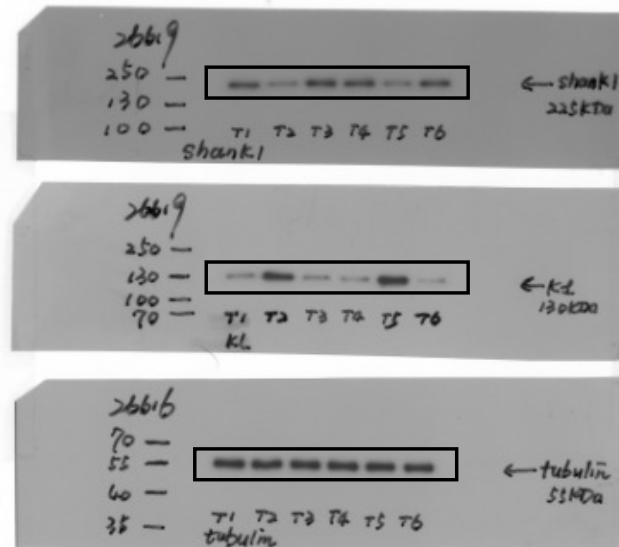


Fig 3E

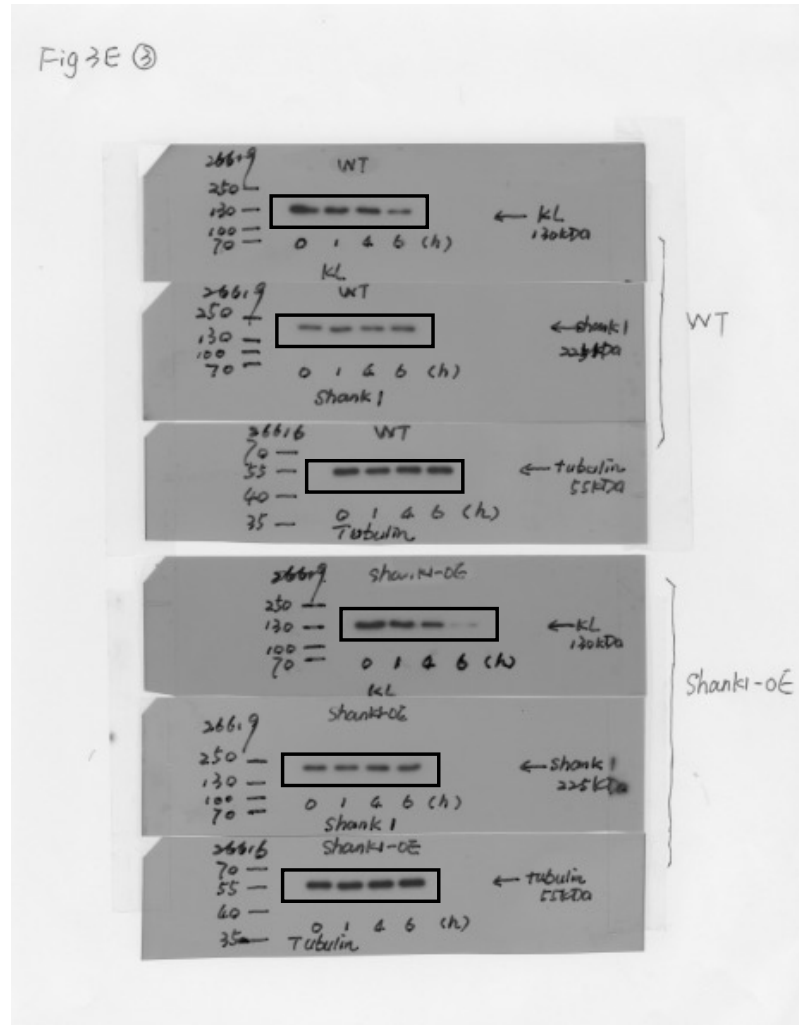


Fig 3G

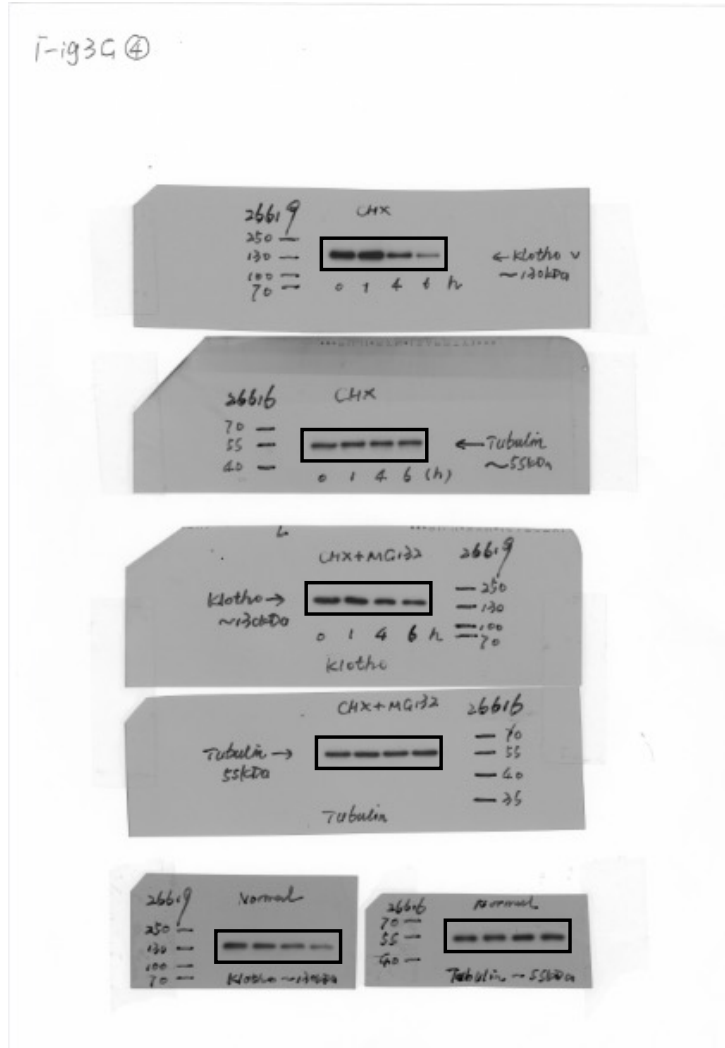


Fig 4A, B

Fig 4A ① IP: KL-Flag ⇒ KL & Shank1.

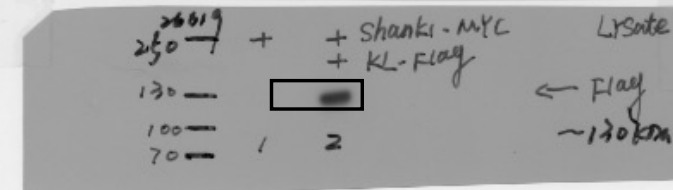
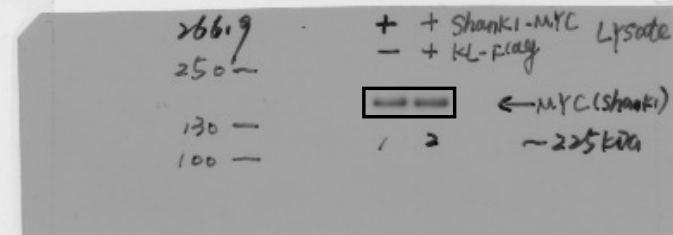
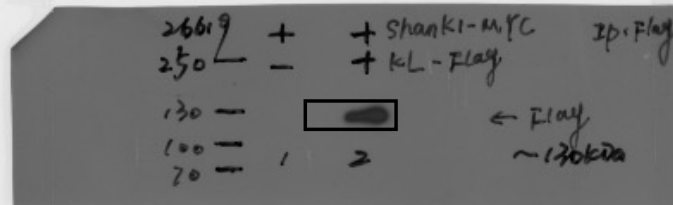
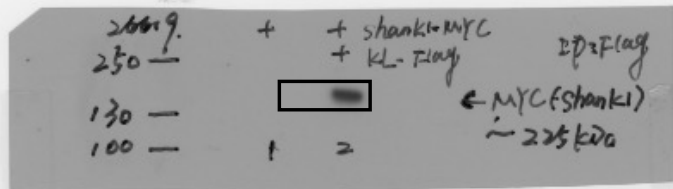


Fig 4B ② IP: anti-KL ⇒ Shank1 & KL.

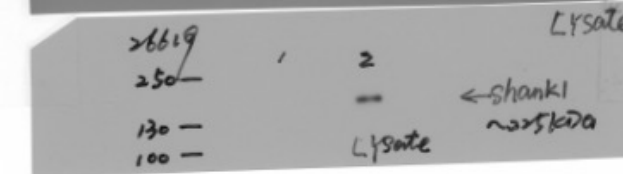
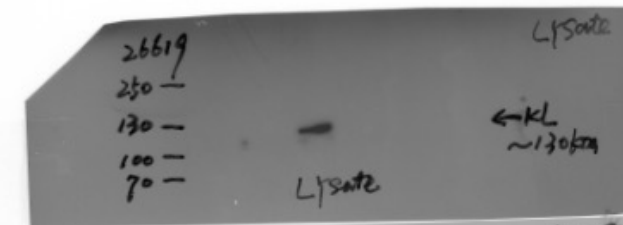
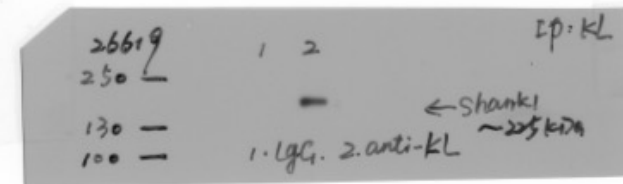
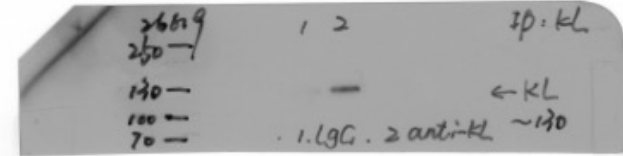


Fig 4D

Fig 4.D

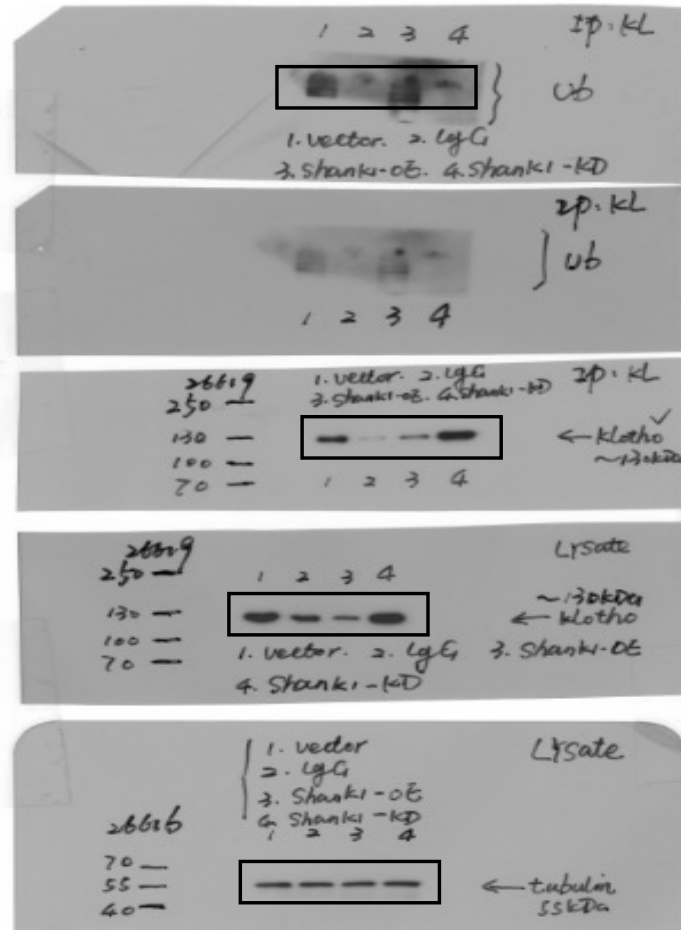


Fig 5A

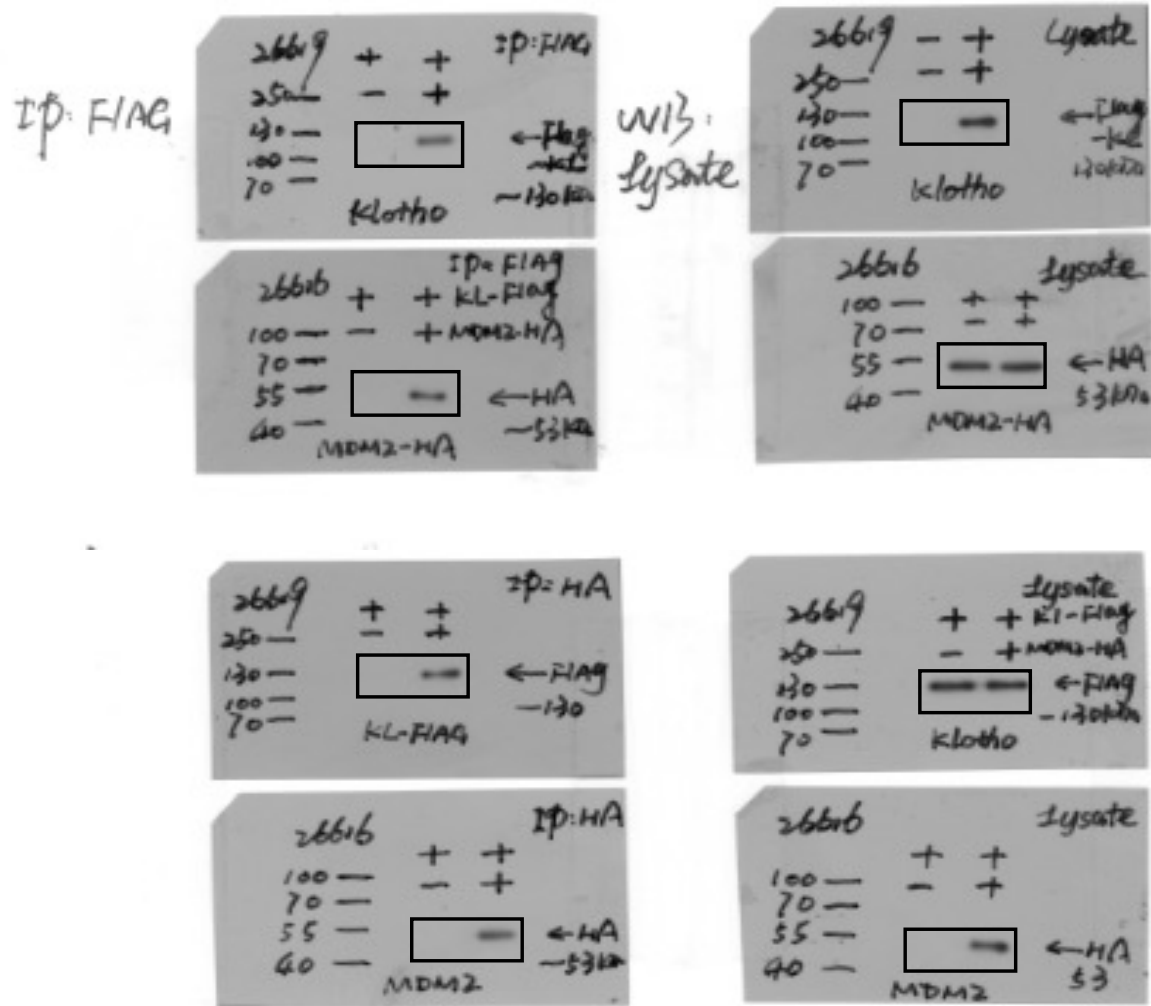
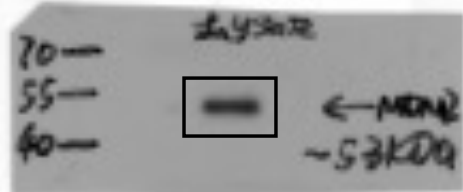
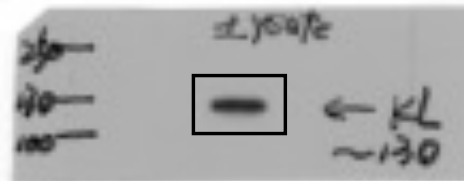


Fig 5C

Lysate



IP: MDM2

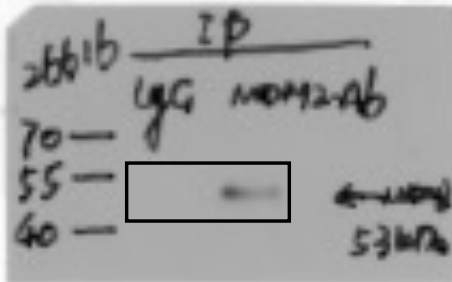
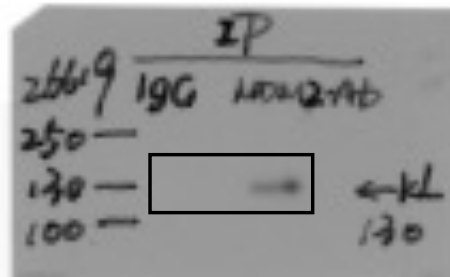


Fig 5D

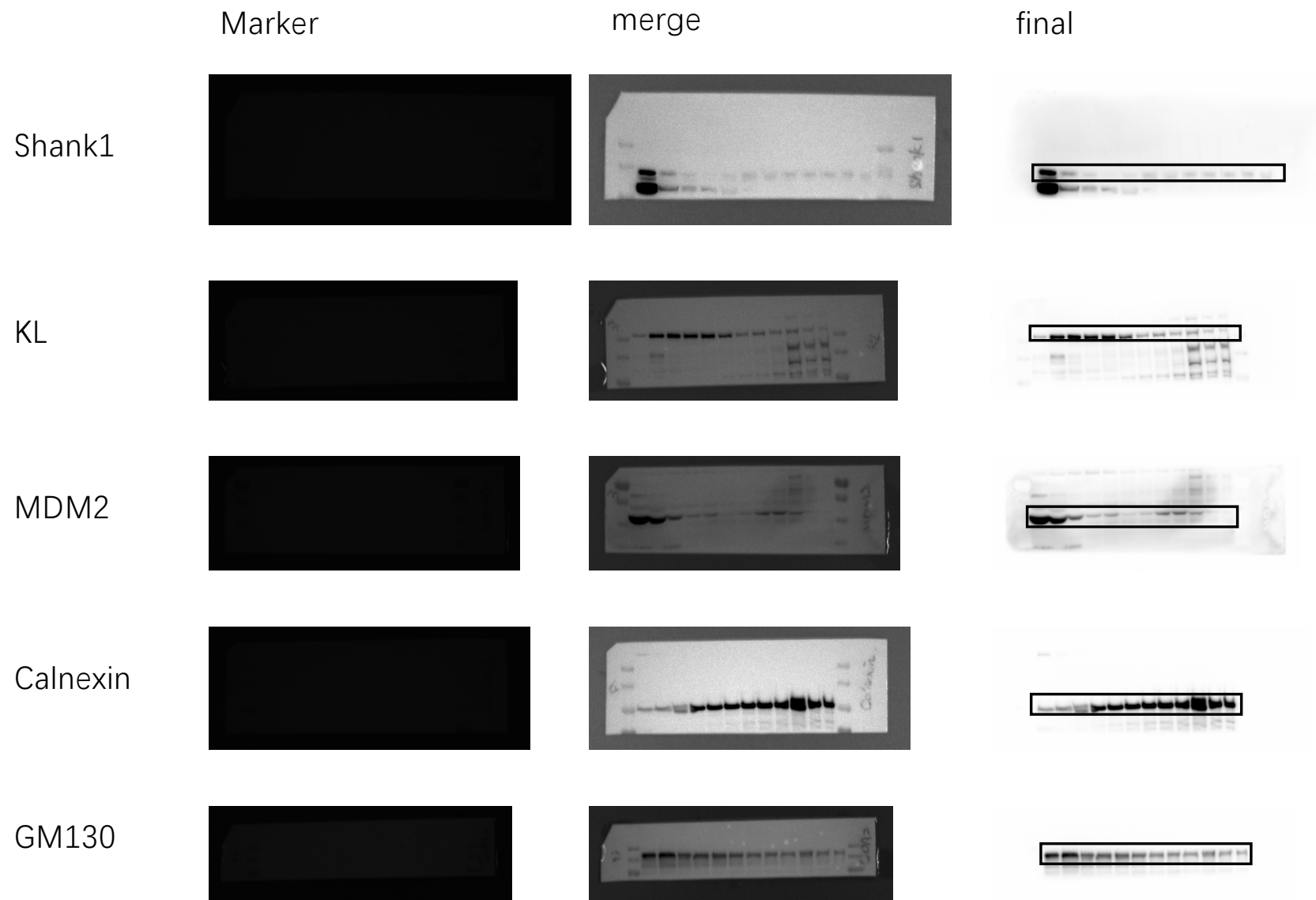


Fig 5E

Fig. 5E

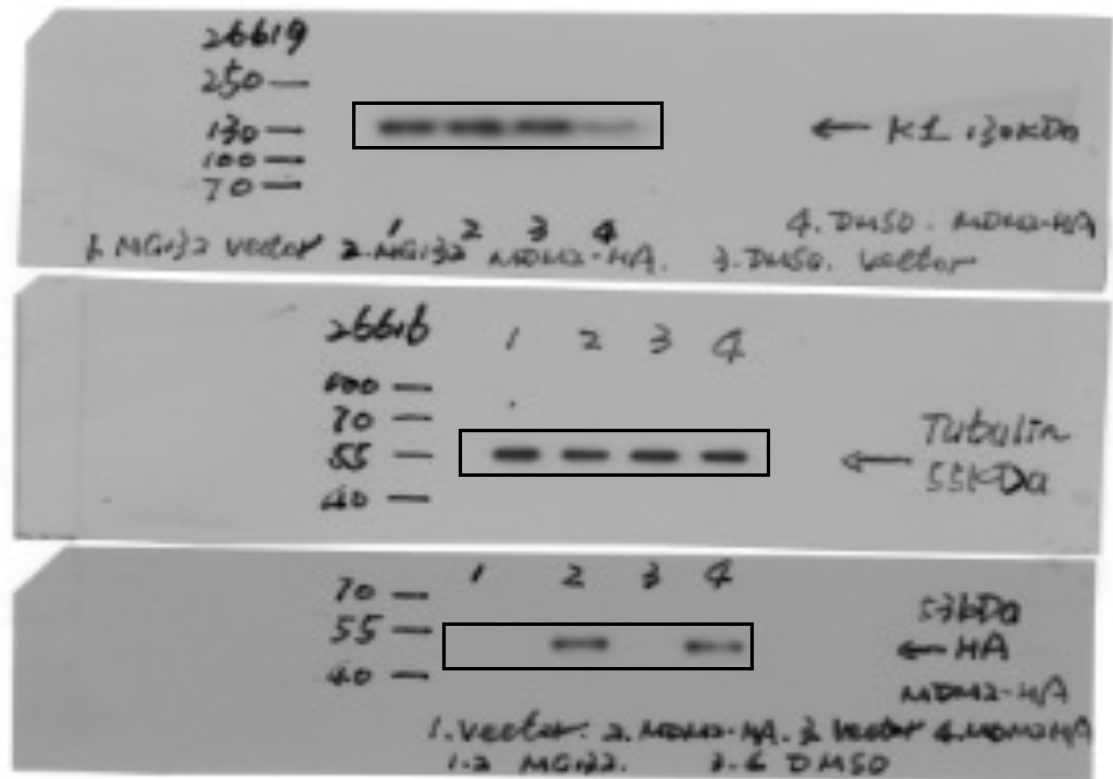
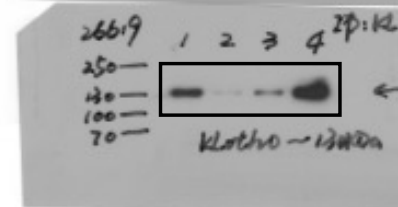
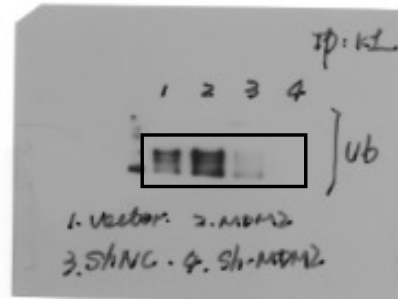


Fig 5G

Fig. 5C

Ip: Klotho



Lysate

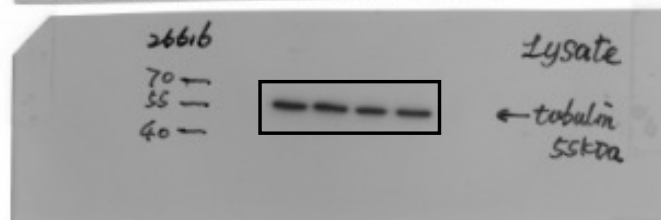
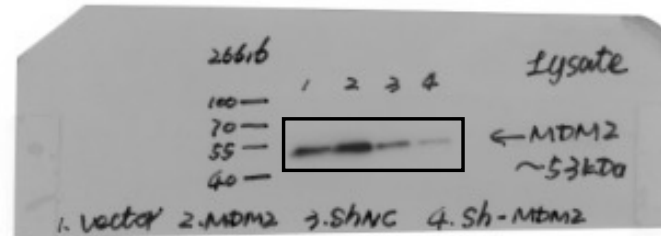


Fig 6A

Fig 6A

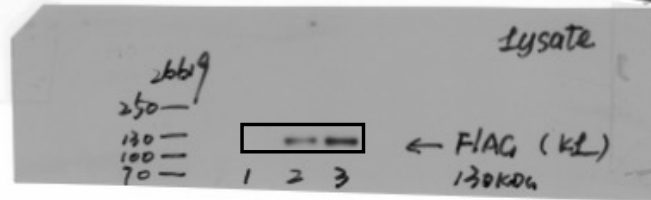
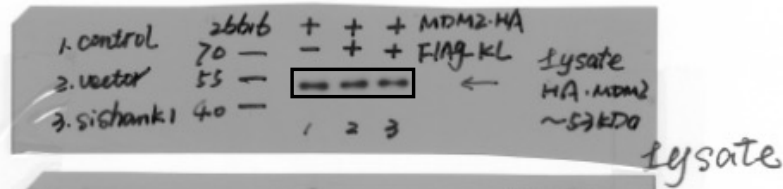
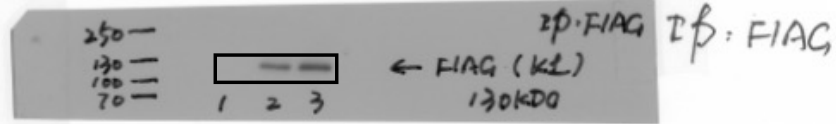
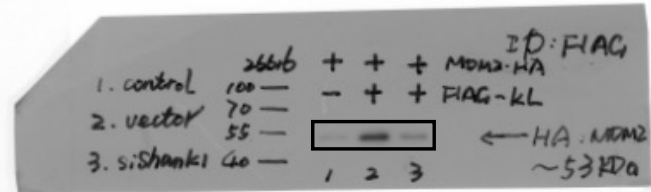


Fig 6B

Fig 6B

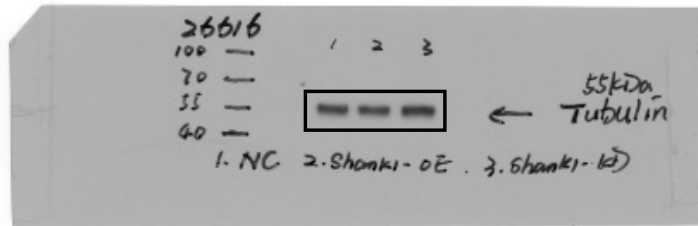
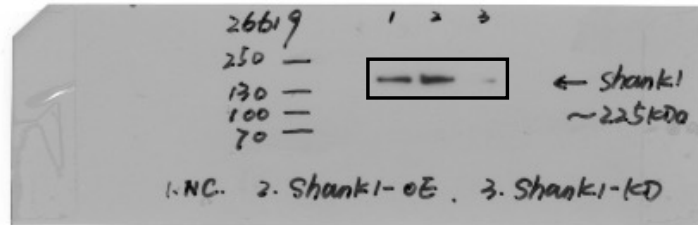
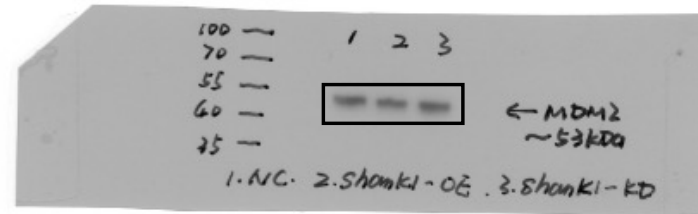


Fig 6C

Fig. 6C 共沉淀三分子复合物 (外-内)

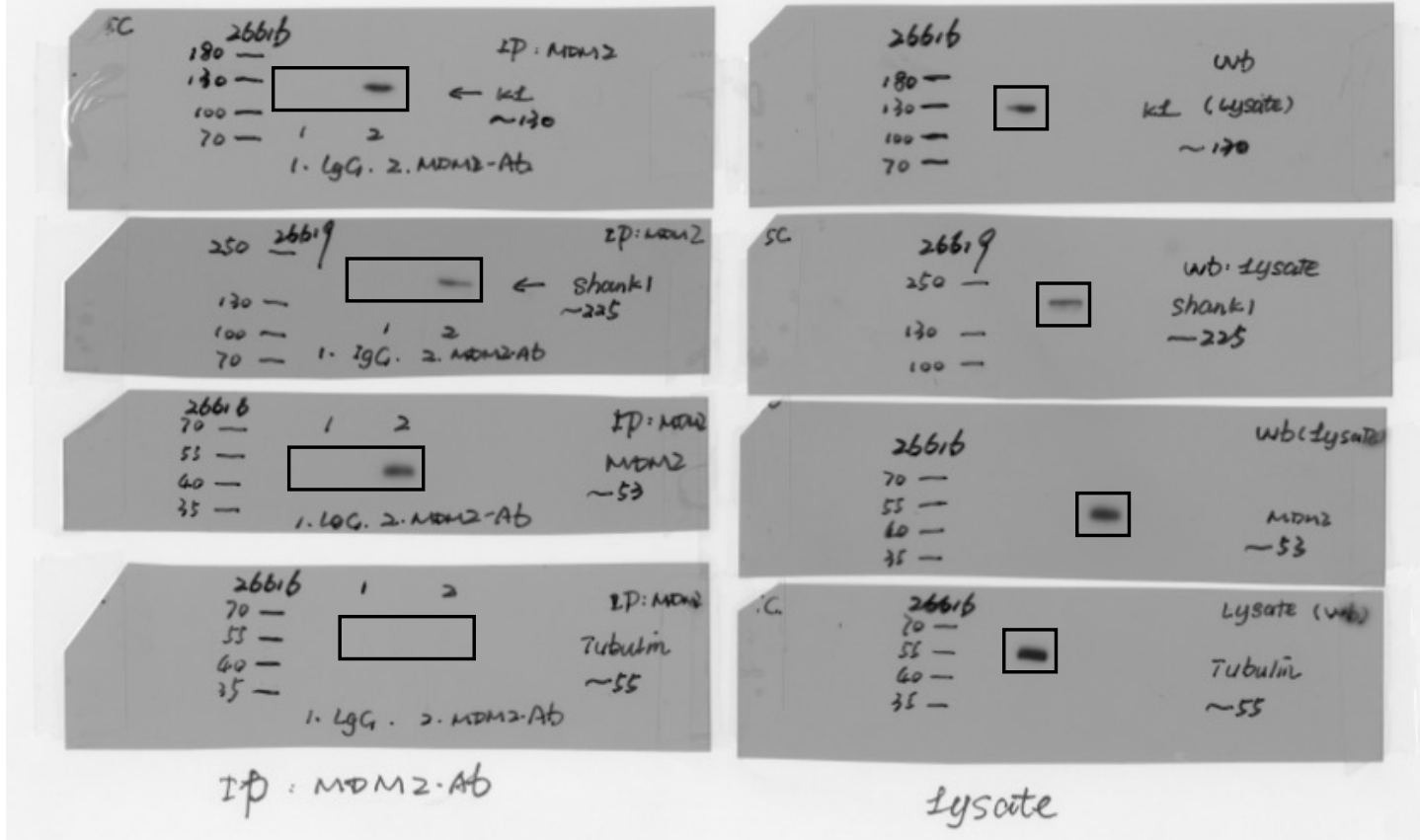
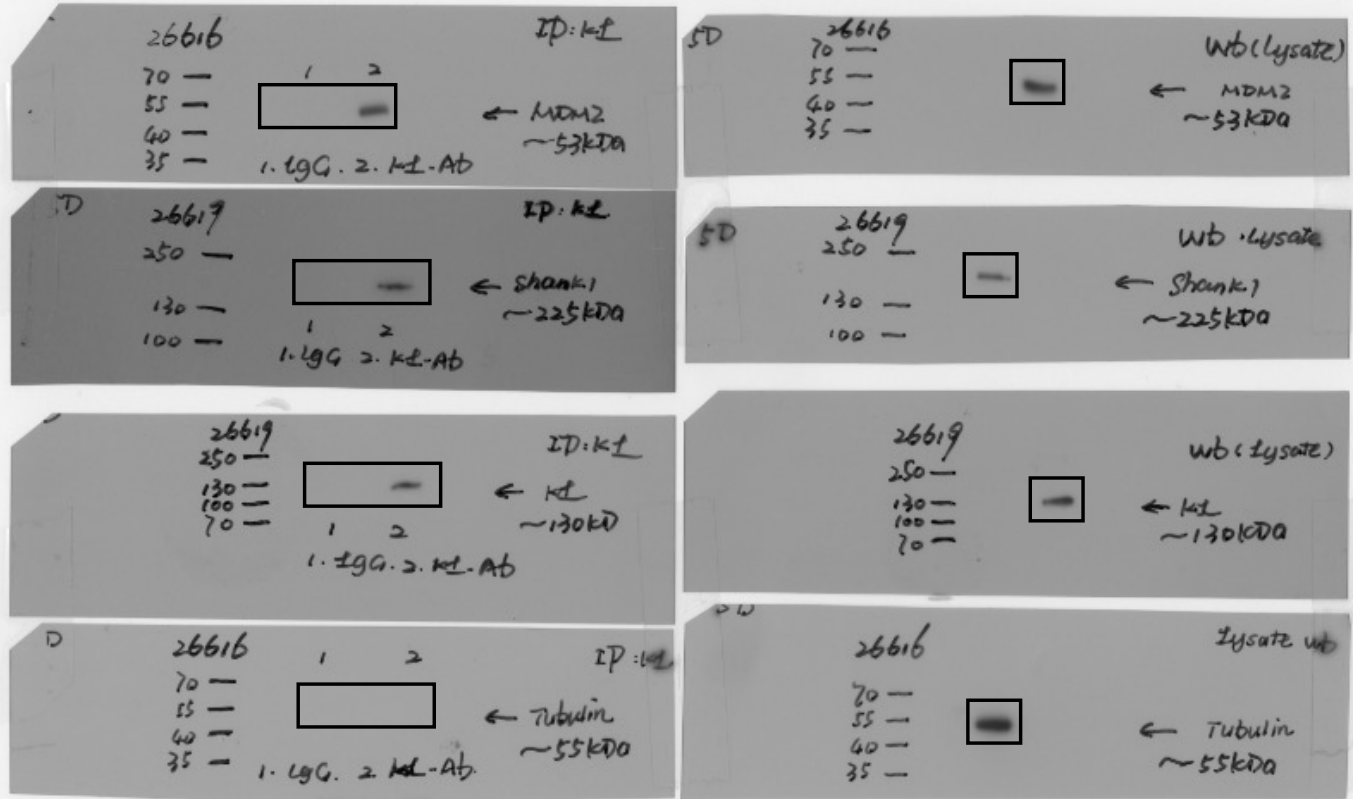


Fig 6D

Fig. 6D 形成三合复合物(内源)

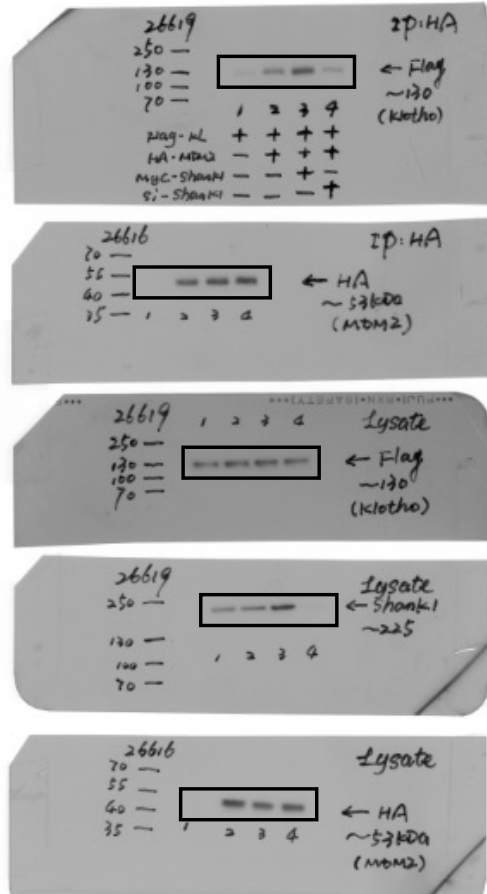


IP: Klotho

Lysate

Fig 6E, F

Fig. 6E



IP

Lysate

Fig. 6F

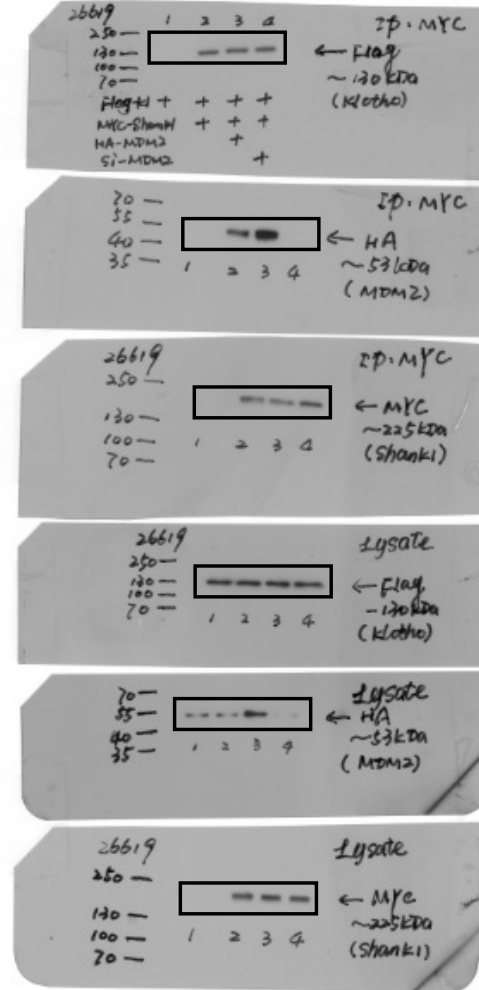
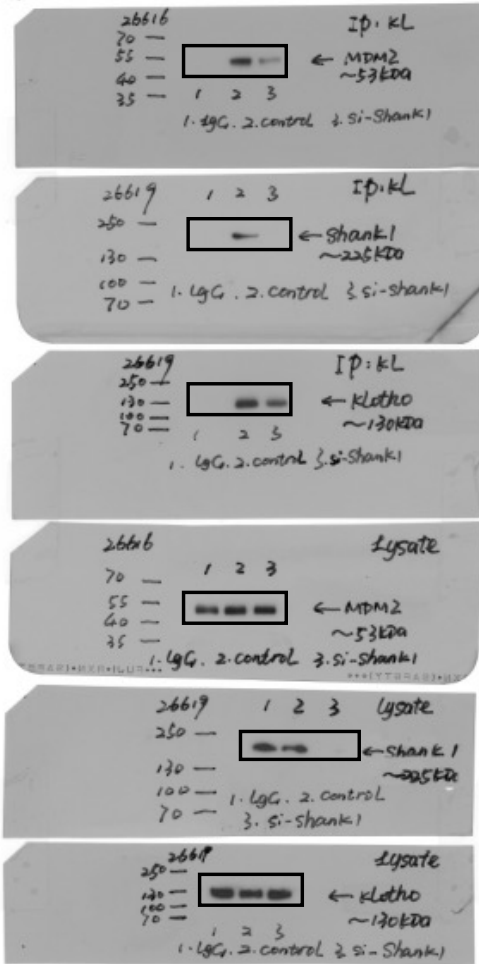


Fig 6G, H

Fig. 6G

A549



H1299

Fig. 6G 和 6H

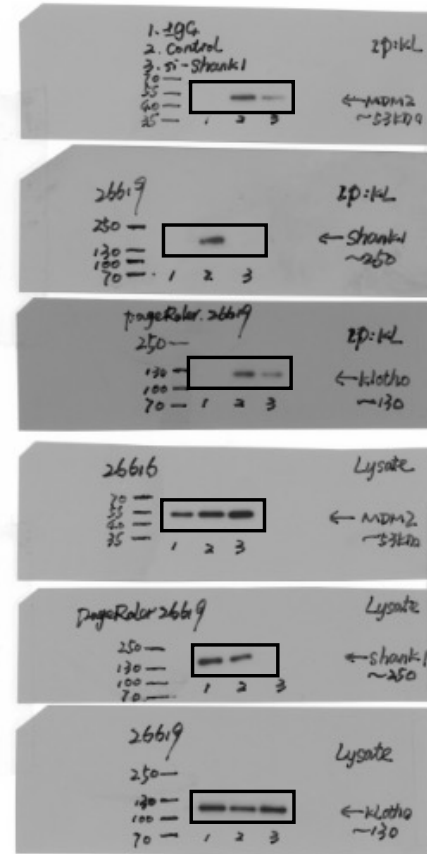


Fig 6I, J

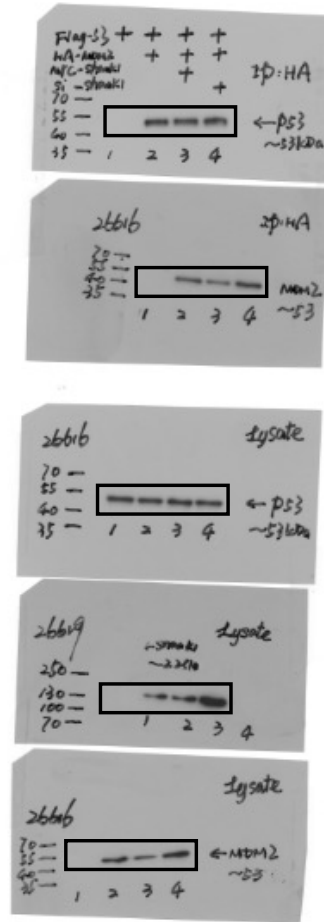
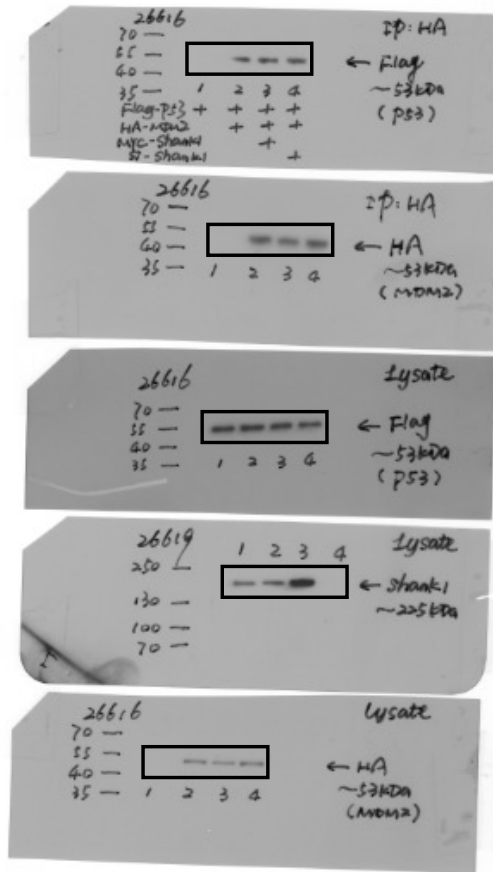


Fig 6K

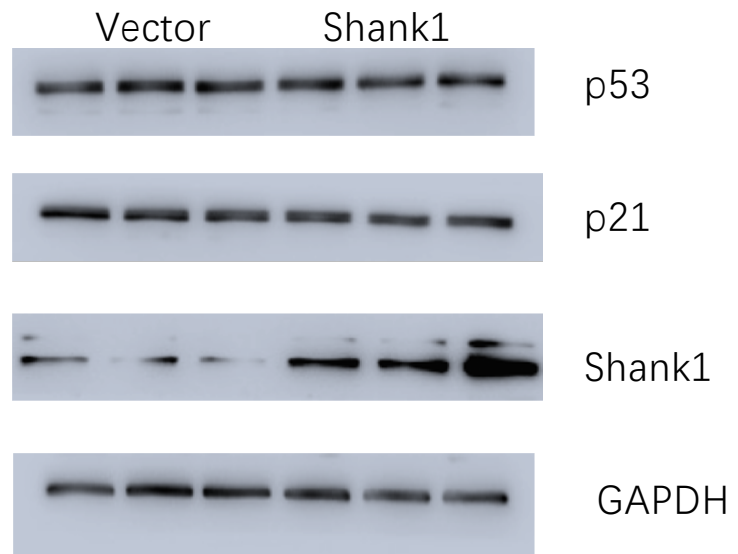


Fig 7D

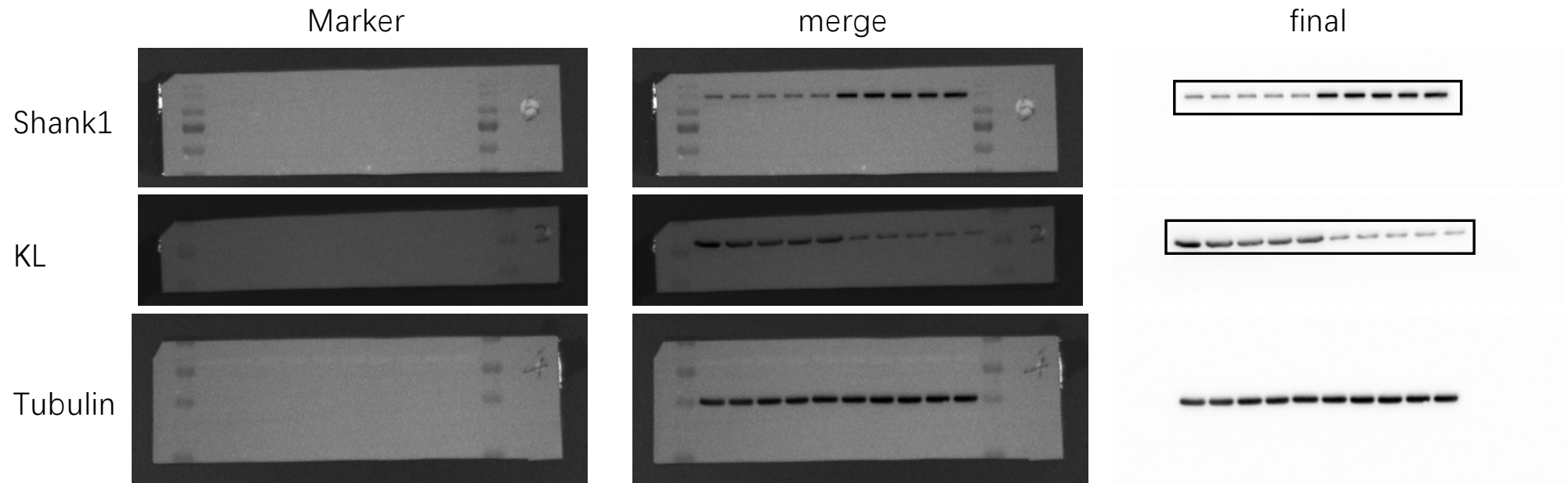


Fig 7D

