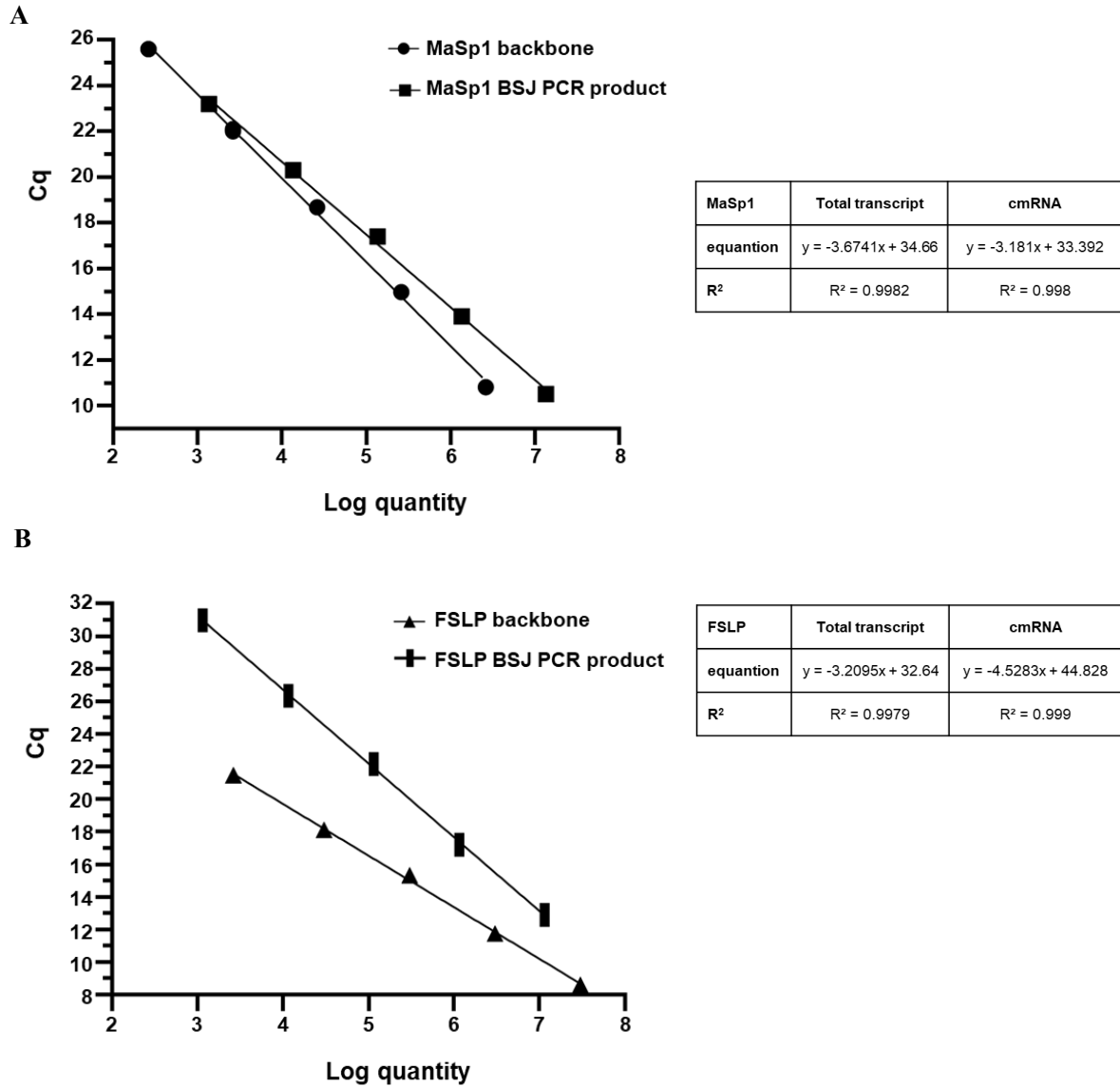


Supplementary Table 1. The main plasmid used for this study

Plasmids	Characteristics	Reference
pcirMaSp1	MaSp1 polyprotein expression	This work
pcirFSLP	FSLP polyprotein expression	This work



Supplementary Figure 1. Quantitative qPCR to calculate the number of total transcript and cmRNA. A. The standard curve of MaSp1 backbone and MaSp1 BSJ PCR product. MaSp1 backbone, the backbone of MaSp1 mRNA. MaSp1 BSJ PCR product, the PCR product of MaSp1 cDNA obtained from mRNA containing the BSJ. B. The standard curve of FSLP backbone and FSLP BSJ PCR product. FSLP backbone, the backbone of FSLP mRNA. FSLP BSJ PCR product, the PCR product of FSLP mRNA containing the BSJ.

A



B



Supplementary Figure 2. The dialyzed silk samples were freeze-dried. A. Freeze-dried sample of MaSp1. B. Freeze-dried sample of FSLP.

DNA sequences for vector

components

>3'intron **MaSp1** His **RBS** 5'intron in *E.coli*

```
GAAAATTCGTCTGGATTAGTTACTTATCGTGTA AAAATCTGATAAATGGAATTGGTTCTA
CATAAATGCCTAACGACTATCCCTTTGGGGAGTAGGGTCAAGTGACTCGAAACGATAG
ACA ACTTGCTTTAACAAGTTGGAGATATAGTCTGCTCTGCATGGTGACATGCAGCTGGA
TATAATCCGGGGTAAGATTAACGACCTTATCTGAACATAATGCTACCAGCGGTCGCGG
CGGTCTGGGTGGCCAGGGTGCAGGTATGGCGGCTGCGGCTGCAATGGGCGGTGCTGG
CCAAGGTGGCTACGGCGGCCTGGGTTCTCAGGGTACTCACCACCACCACCACCACAA
GGAGATATACCATATGGATCTCAGGTCAATTGAGGCCTGAGTATAAGGTGACTTATACTT
GTAATCTATCTAAACGGGGAACCTCTCTAGTAGACAATCCCGTGCTAAATTGTAGGACT
GCCCTTTAATAAATACTTCTATATTTAAAGAGGTATTTATGAAAAGCGGAATTTATCAGAT
TAAAAATACTT
```

>3'intron **FSLP** His 5'intron in *E.coli*

```
GAAAATTCGTCTGGATTAGTTACTTATCGTGTA AAAATCTGATAAATGGAATTGGTTCTA
CATAAATGCCTAACGACTATCCCTTTGGGGAGTAGGGTCAAGTGACTCGAAACGATAG
ACA ACTTGCTTTAACAAGTTGGAGATATAGTCTGCTCTGCATGGTGACATGCAGCTGGA
TATAATCCGGGGTAAGATTAACGACCTTATCTGAACATAATGCTACCGGGGGAGCAGG
CGGATCAGGTGGGGCTGGAGGCTCCGGCGGGGTGGGTGGCTCGGGCGGCACCACCAT
TATCGAGGACCTGGATATTACGATCGACGGCGCAGATGGTCCGATCACTATCAGCGAAG
AGTTGACCATTAGCGGCGCGGGTGGCAGCGGTCCGGGTGGTAGCGGTCCGGGTGGTTA
CGGCCCGGGTGGCTCTGGCCCAGGCGGATATGGTCCGGGCGGTTCCGGTCCGGGTGGT
TATGGTCCGGGTGGCAGCGGTCCGGGTGGCTACCACCACCACCACCACCACAAGGAG
ATATACCATATGGATCTCAGGTCAATTGAGGCCTGAGTATAAGGTGACTTATACTTGTAA
TCTATCTAAACGGGGAACCTCTCTAGTAGACAATCCCGTGCTAAATTGTAGGACTGCC
TTAATAAATACTTCTATATTTAAAGAGGTATTTATGAAAAGCGGAATTTATCAGATAAA
AATACTT
```