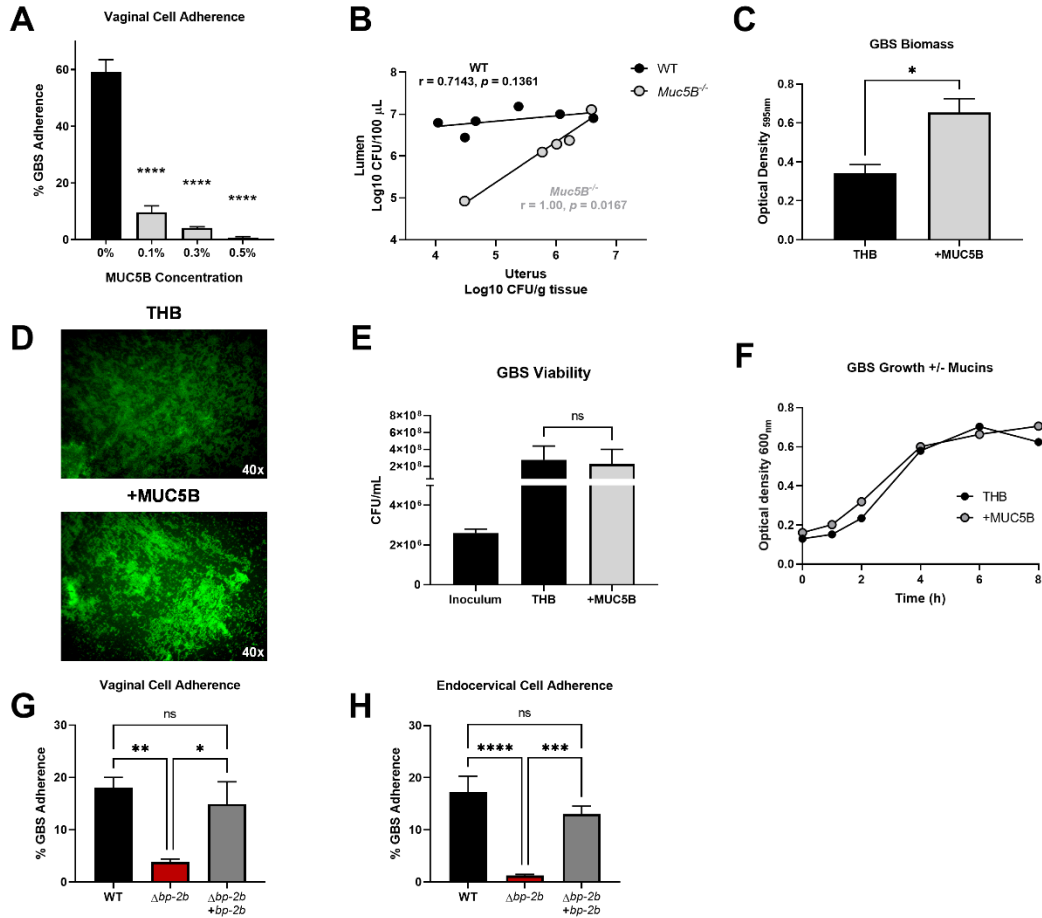


Supplemental Materials



Supplemental Figure 1. **A**) Adherence of GBS to VK2 cells with 0.1-0.5% MUC5B. Data are represented as a mean percent CFU recovered from the inoculum. **B**) Spearman correlation between GBS recovered from the vaginal lumen and the uterine tissues of WT and *Muc5B*^{-/-} mice. COH1 or GFP-expressing COH1 were grown for 18h in media alone or with MUC5B to assess biofilm formation. Biofilms were rinsed and **C**) stained with crystal violet to assess optical density (OD_{595nm}) or **D**) fixed and imaged by fluorescence microscopy using a BZ-X710 Keyence microscope. Growth of GBS with and without MUC5B was assessed by **E**) CFU quantification or **F**) optical density (OD_{600nm}). GBS COH1 grown +/- MUC5B CFU data are displayed as average from *n*=3 biological replicates. Adherence of WT, $\Delta bp-2b$, and $\Delta bp-2b + bp-2b$ to **G**) vaginal and **H**) endocervical (End1) epithelial cells. Data are represented as a mean percent CFU recovered from the inoculum of three independent experiments. Statistical analyses were determined using One-way ANOVA with Dunnett's multiple comparison post-test (**A**), Student's unpaired, two-tailed t-test (**C**, **E**), and One-way ANOVA with Tukey's multiple comparison post-test (**G**, **H**). Statistical significance was accepted when *p* < α , with α = 0.05, * *p* < 0.05, ** *p* < 0.01, *** *p* < 0.001, **** *p* < 0.0001, and ns = not significant.