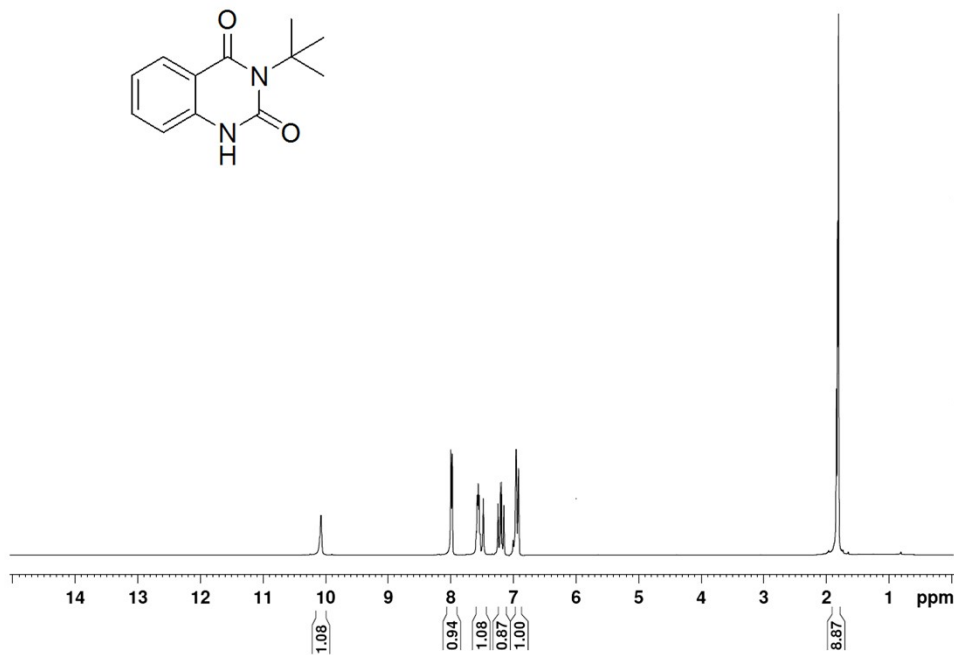
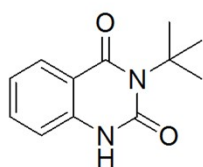
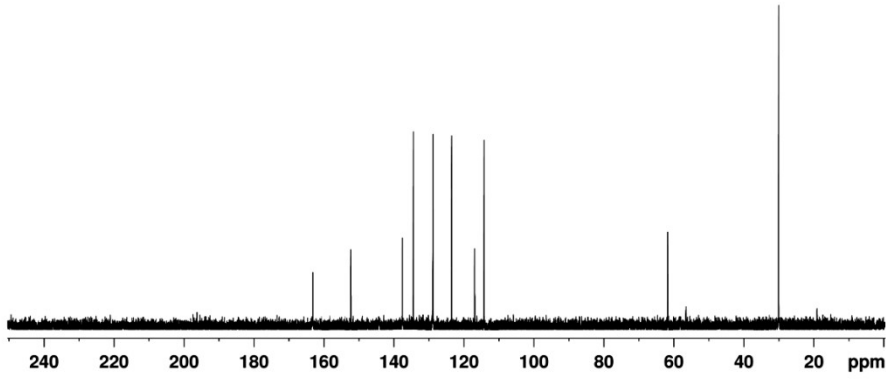
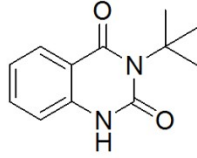


Supporting Information



```
EXPNO          55
PROCNO         1
Date_          20210808
Time           8.17
INSTRUM       spect
PROBHD        5 mm PABBO BB-
PULPROG       zg30
TD            65536
SOLVENT       DMSO
NS            32
DS            0
SWH           8012.820 Hz
FIDRES        0.122266 Hz
AQ            4.0894966 sec
RG            203
DW            62.400 usec
DE            6.50 usec
TE            293.4 K
D1            6.0000000 sec
TD0           1

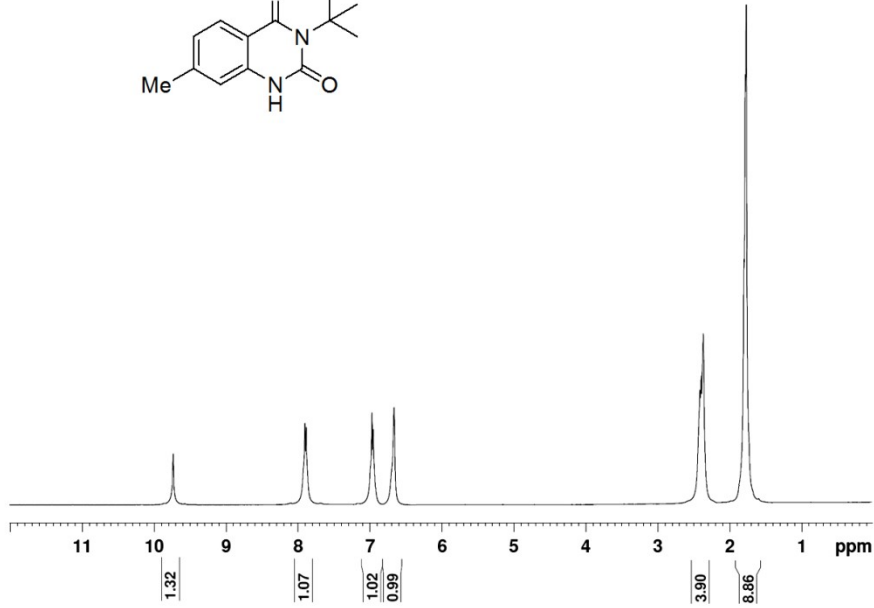
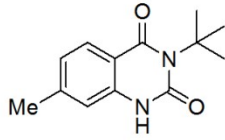
----- CHANNEL f1 -----
NUC1          1H
P1            14.00 usec
PL1           -2.00 dB
PL1W          11.86359406 W
SF01          400.2236020 MHz
SI            32768
SF            400.2200000 MHz
WDW           EM
SSB           0
LB            0.30 Hz
GB            0
PC            1.00
```



```
EXPNO          138
PROCNO         1
Date_          20210808
Time           18.25
INSTRUM       spect
PROBHD        5 mm PABBO BB-
PULPROG       zgpg
TD            65536
SOLVENT       DMSO
NS            80
DS            0
SWH           25252.525 Hz
FIDRES        0.385323 Hz
AQ            1.2976629 sec
RG            2050
DW            19.800 usec
DE            6.50 usec
TE            294.0 K
D1            3.0000000 sec
D11           0.0300000 sec
TD0           1

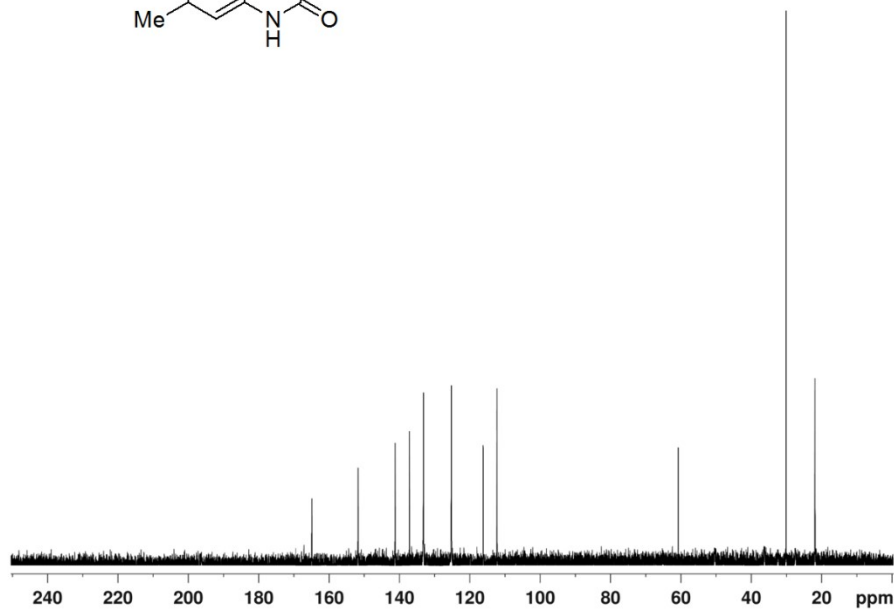
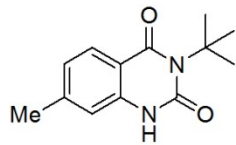
===== CHANNEL f1 =====
NUC1          13C
P1            9.00 usec
PL1           -0.90 dB
PL1W          42.02801895 W
SFO1          100.6479784 MHz

===== CHANNEL f2 =====
CPDPRG2      waltz16
NUC2          1H
PCPD2        90.00 usec
PL2           -2.00 dB
PL12         14.16 dB
PL13         17.90 dB
PL2W         11.86359406 W
PL12W        0.28722104 W
PL13W        0.12139934 W
SFO2         400.2216009 MHz
SI           32768
SF           100.6353990 MHz
WDW          EM
SSB          0
LB           1.00 Hz
GB           0
PC           1.40
```



```
EXPNO 131
PROCNO 1
Date_ 20210808
Time 18.22
INSTRUM spect
PROBHD 5 mm PABBO BE-
PULPROG zg30
TD 65536
SOLVENT DMSO
NS 24
DS 0
SWH 8012.820 Hz
FIDRES 0.122266 Hz
AQ 4.0894966 sec
RG 912
DW 62.400 usec
DE 6.50 usec
TE 293.1 K
D1 6.0000000 sec
TDO 1

----- CHANNEL f1 -----
NUC1 1H
P1 14.00 usec
PL1 -2.00 dB
PL1W 11.86359406 W
SFO1 400.2236020 MHz
SI 32768
SF 400.2200000 MHz
WDW EM
SSB 0
LB 0.30 Hz
GB 0
PC 1.00
```



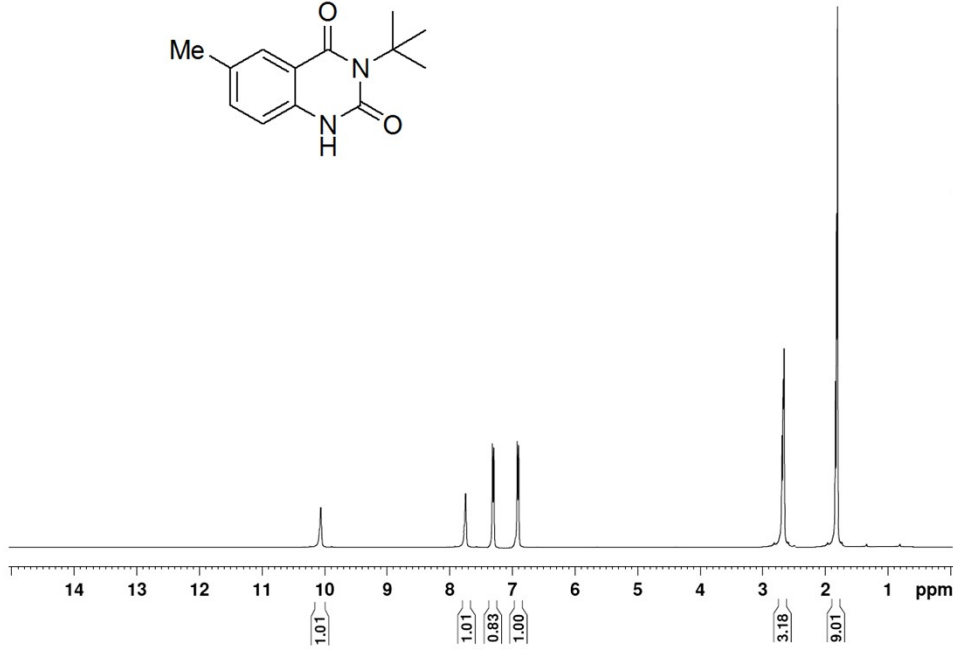
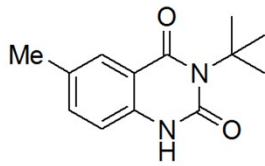
```

EXPNO          134
PROCNO         1
Date_          20210808
Time           17.51
INSTRUM        spect
PROBHD         5 mm PABBO BB-
PULPROG        zgpg
TD              65536
SOLVENT        DMSO
NS              110
DS              0
SWH            25252.525 Hz
FIDRES         0.385323 Hz
AQ             1.2976629 sec
RG             2050
DW             19.800 usec
DE             6.50 usec
TE             293.3 K
D1             3.0000000 sec
D11            0.0300000 sec
TDO            1

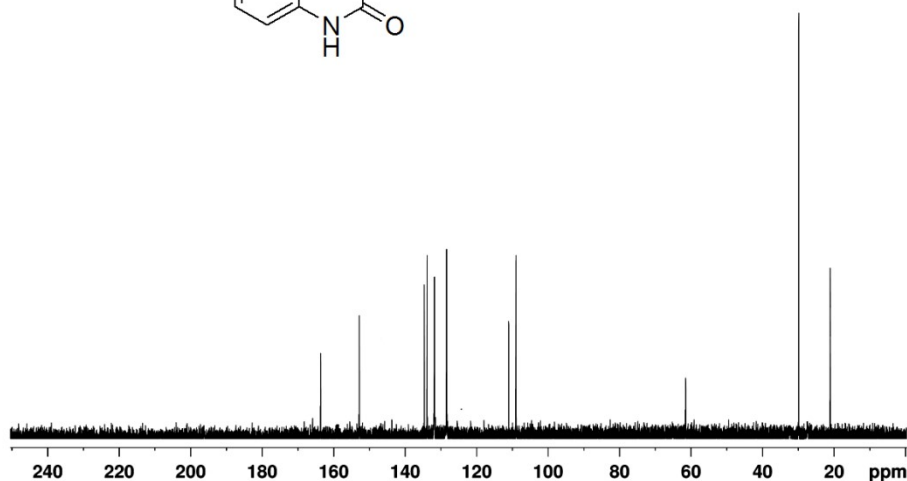
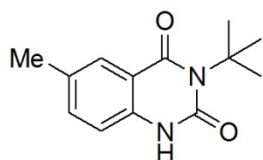
===== CHANNEL f1 =====
NUC1            13C
P1              9.00 usec
PL1            -0.90 dB
PL1W           42.02801895 W
SF01           100.6479784 MHz

===== CHANNEL f2 =====
CPDPRG2        waltz16
NUC2            1H
PCPD2          90.00 usec
PL2            -2.00 dB
PL12           14.16 dB
PL13           17.90 dB
PL2W           11.86359406 W
PL12W          0.28722104 W
PL13W          0.12139934 W
SFO2           400.2216009 MHz
SI             32768
SF             100.6353990 MHz
WDW            EM
SSB            0
LB             1.00 Hz
GB             0
PC             1.40

```



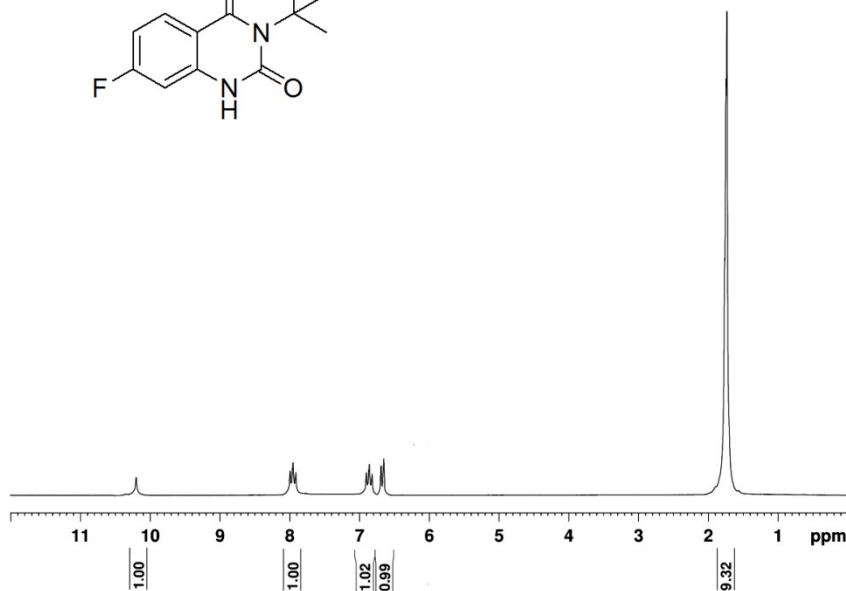
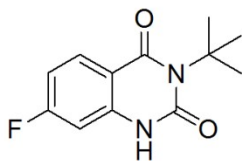
```
EXPNO          55
PROCNO         1
Date_          20210808
Time           4.08
INSTRUM       spect
PROBHD        5 mm PABBO BB-
PULPROG       zg30
TD            65536
SOLVENT       DMSO
NS            32
DS            0
SWH           8012.820 Hz
FIDRES        0.122266 Hz
AQ            4.0894966 sec
RG            203
DW            62.400 usec
DE            6.50 usec
TE            293.4 K
D1            6.0000000 sec
TD0           1
----- CHANNEL f1 -----
NUC1           1H
P1            14.00 usec
PL1           -2.00 dB
PL1W          11.86359406 W
SF01          400.2236020 MHz
SI            32768
SF            400.2200000 MHz
WDW           EM
SSB           0
LB            0.30 Hz
GB            0
PC            1.00
```



```
EXPNO 134
PROCNO 1
Date_ 20210808
Time 17.51
INSTRUM spect
PROBHD 5 mm PABBO BB-
PULPROG zgpg
TD 65536
SOLVENT DMSO
NS 110
DS 0
SWH 25252.525 Hz
FIDRES 0.385323 Hz
AQ 1.2976629 sec
RG 2050
DW 19.800 usec
DE 6.50 usec
TE 293.3 K
D1 3.0000000 sec
D11 0.0300000 sec
TDO 1

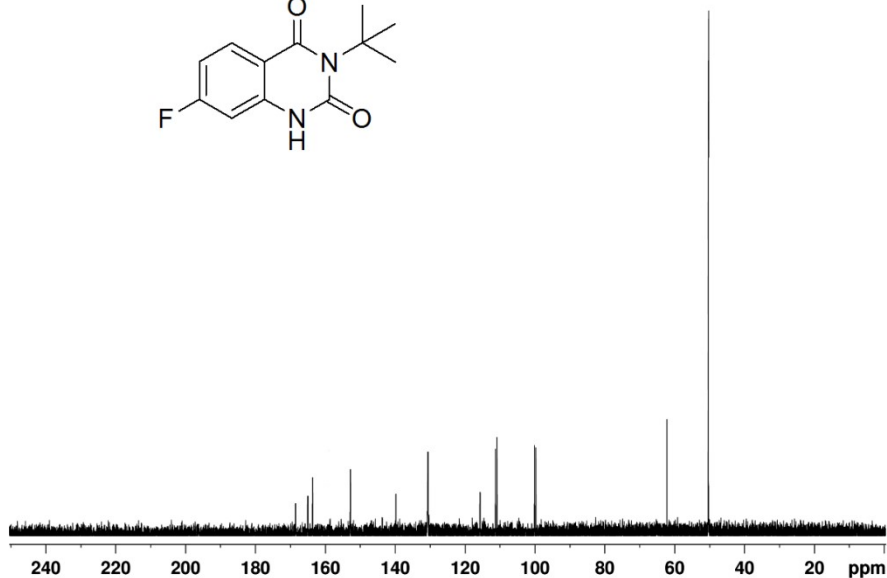
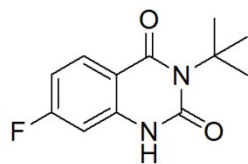
===== CHANNEL f1 =====
NUC1 13C
P1 9.00 usec
PL1 -0.90 dB
PL1W 42.02801895 W
SFO1 100.6479784 MHz

===== CHANNEL f2 =====
CPDPRG2 waltz16
NUC2 1H
PCPD2 90.00 usec
PL2 -2.00 dB
PL12 14.16 dB
PL13 17.90 dB
PL2W 11.86359406 W
PL12W 0.28722104 W
PL13W 0.12139934 W
SFO2 400.2216009 MHz
SI 32768
SF 100.6353990 MHz
WDW EM
SSB 0
LB 1.00 Hz
GB 0
FC 1.40
```



EXPNO 133
PROCNO 1
Date_ 20210808
Time 17.46
INSTRUM spect
PROBHD 5 mm PABBO BB-
PULPROG zg30
TD 65536
SOLVENT DMSO
NS 24
DS 0
SWH 8012.820 Hz
FIDRES 0.122266 Hz
AQ 4.0894966 sec
RG 912
DW 62.400 usec
DE 6.50 usec
TE 293.1 K
D1 6.0000000 sec
TD0 1

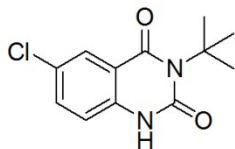
===== CHANNEL f1 =====
NUC1 1H
P1 14.00 usec
PL1 -2.00 dB
PL1W 11.86359406 W
SFO1 400.2236020 MHz
SI 32768
SF 400.2200000 MHz
WDW EM
SSB 0
LB 0.30 Hz
GB 0
PC 1.00



```
EXPNO          134
PROCNO         1
Date_          20210808
Time           17.51
INSTRUM       spect
PROBHD        5 mm PABBO BB-
PULPROG       zgpg
TD             65536
SOLVENT       DMSO
NS             110
DS             0
SWH           25252.525 Hz
FIDRES        0.385323 Hz
AQ            1.2976629 sec
RG             2050
DW            19.800 usec
DE             6.50 usec
TE            293.3 K
D1             3.0000000 sec
D11            0.0300000 sec
TD0            1

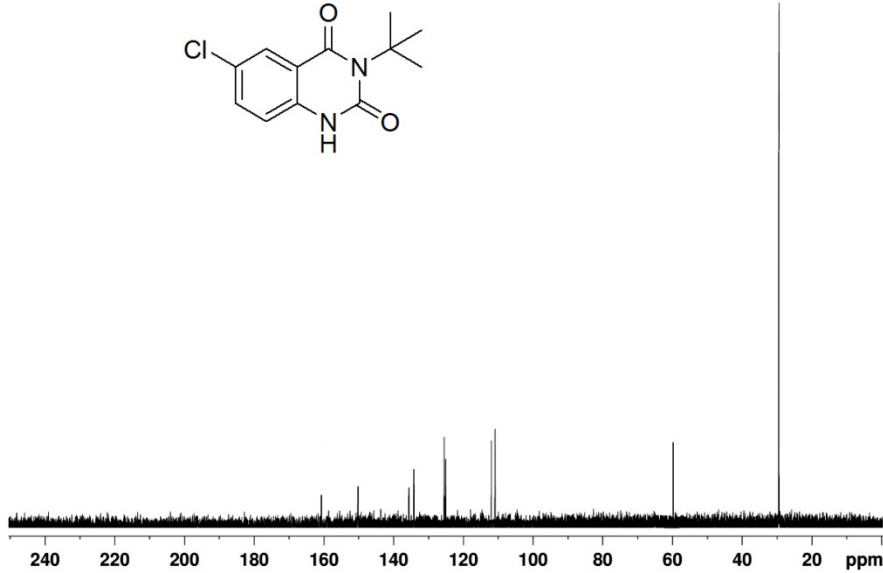
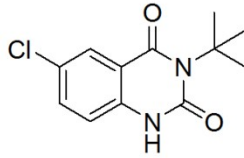
===== CHANNEL f1 =====
NUC1           13C
P1              9.00 usec
PL1             -0.90 dB
PL1W           42.02801895 W
SFO1           100.6479784 MHz

===== CHANNEL f2 =====
CPDPRG2       waltz16
NUC2           1H
PCPD2          90.00 usec
PL2             -2.00 dB
PL12           14.16 dB
PL13           17.90 dB
PL2W           11.86359406 W
PL12W          0.28722104 W
PL13W          0.12139934 W
SFO2           400.2216009 MHz
SI              32768
SF             100.6353990 MHz
WDW            EM
SSB             0
LB              1.00 Hz
GB              0
PC              1.40
```

EXPNO 133
PROCNO 1
Date_ 20210808
Time 17.46
INSTRUM spect
PROBHD 5 mm PABBO BB-
PULPROG zg30
TD 65536
SOLVENT DMSO
NS 24
DS 0
SWH 8012.820 Hz
FIDRES 0.122266 Hz
AQ 4.0894966 sec
RG 912
DW 62.400 usec
DE 6.50 usec
TE 293.1 K
D1 6.0000000 sec
TD0 1

===== CHANNEL f1 =====
NUC1 1H
P1 14.00 usec
PL1 -2.00 dB
PL1W 11.86359406 W
SFO1 400.2236020 MHz
SI 32768
SF 400.2200000 MHz
WDW EM
SSB 0
LB 0.30 Hz
GB 0
PC 1.00



```
EXPNO          134
PROCNO         1
Date_          20210808
Time           12.36
INSTRUM       spect
PROBHD        5 mm PABBO BB-
PULPROG       zgpg
TD            65536
SOLVENT       DMSO
NS            110
DS            0
SWH           25252.525 Hz
FIDRES        0.385323 Hz
AQ            1.2976629 sec
RG            2050
DW            19.800 usec
DE            6.50 usec
TE            293.3 K
D1            3.0000000 sec
D11           0.0300000 sec
TD0           1

===== CHANNEL f1 =====
NUC1          13C
P1            9.00 usec
PL1           -0.90 dB
PL1W          42.02801895 W
SFO1         100.6479784 MHz

===== CHANNEL f2 =====
CPDPRG2      waltz16
NUC2          1H
PCPD2        90.00 usec
PL2           -2.00 dB
PL12         14.16 dB
PL13         17.90 dB
PL12W        11.86359406 W
PL12W        0.28722104 W
PL13W        0.12139934 W
SFO2         400.2216009 MHz
SI            32768
SF           100.6353990 MHz
WDW           EM
SSB           0
LB            1.00 Hz
GB            0
PC            1.40
```