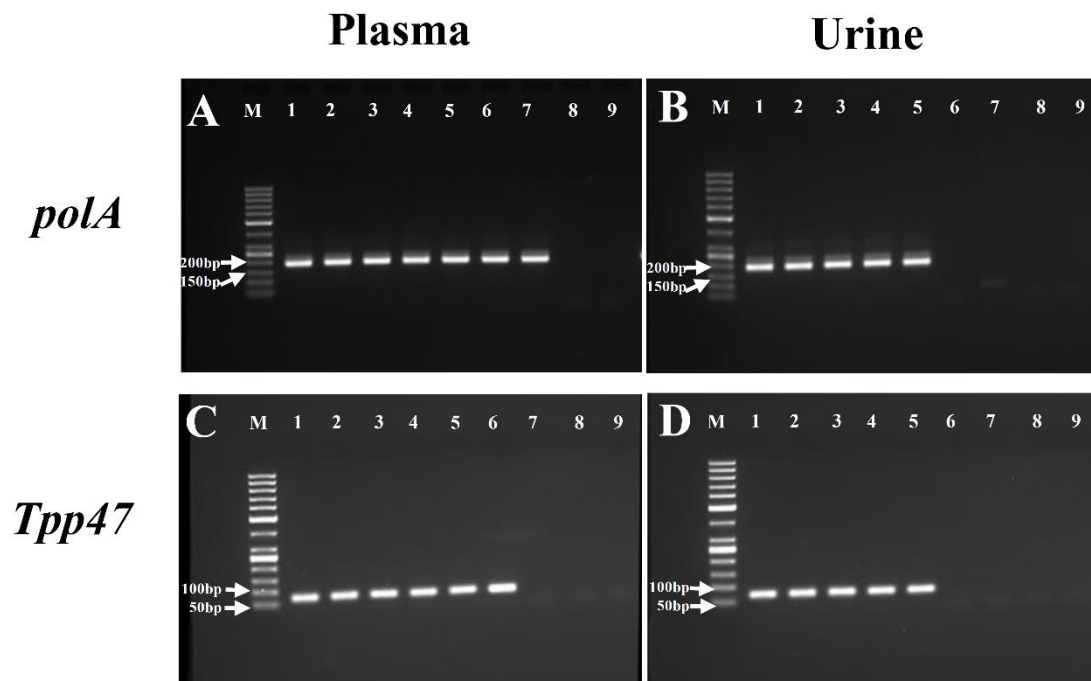


## Supplementary Figure 1



### Supplementary Figure 1 legend

#### The limit of detection of *polA* and *Tpp47* in plasma and urine by nPCR assay.

Different number of *T. pallidum* (Nichols strains) were diluted in plasma (A) and urine (B) and *polA* gene was detected by nPCR assay; Different number of *T. pallidum* (Nichols strains) were diluted in plasma (C) and urine (D) and *Tpp47* gene was detected by nPCR assay. M: marker; line 1,  $3 \times 10^4$  *T. pallidum*/mL; line 2,  $3 \times 10^3$  *T. pallidum*/mL; line 3,  $3 \times 10^2$  *T. pallidum*/mL; line 4,  $3 \times 50$  *T. pallidum*/mL; line 5,  $3 \times 10$  *T. pallidum*/mL; line 6,  $3 \times 5$  *T. pallidum*/mL; line 7, 3 *T. pallidum*/mL; line 8, 0.3 *T. pallidum*/mL; line 9, negative control (plasma or urine without *T. pallidum*).