

## Supplementary Online Content

Kim DH, Lee JY, Cho SI, Jo SJ. Risk of comorbidities in patients with palmoplantar pustulosis vs patients with psoriasis vulgaris or pompholyx in Korea. *JAMA Dermatol*. Published online April 27, 2022. doi:10.1001/jamadermatol.2022.1081

**eMethods.** Data Sources, Validation of Diagnostic Accuracy, and Categorization of Sociodemographic and Clinical Characteristics

**eResults.** Pilot Study

**eTable 1.** Validation Algorithms of PPP

**eTable 2.** List of Collected *ICD-10* Codes of Studied Diseases and Comorbidities

**eTable 3.** Period Prevalence of Palmoplantar Pustulosis in Korea (2010-2019)

**eTable 4.** Comparison Between Patients With PPP and Age- and Sex-Matched Controls Without PPP in the NHIS-NSC

**eTable 5.** Risk of Palmoplantar Pustulosis in Various Conditions Compared With Pompholyx and Psoriasis Vulgaris

**eTable 6.** Prevalence of Comorbidities in Palmoplantar Pustulosis, Psoriasis Vulgaris, and Pompholyx

**eTable 7.** Comparison Between Patients With Palmoplantar Pustulosis and Propensity Score–Matched Controls With Pompholyx

**eTable 8.** Comparison Between Patients With Palmoplantar Pustulosis and Propensity Score–Matched Controls With Psoriasis Vulgaris

**eTable 9.** Subgroup Analysis Comparing Patients With Palmoplantar Pustulosis With Patients With Pompholyx and Psoriasis Vulgaris by Sex and Age

**eTable 10.** Subgroup Analysis Comparing Patients With Palmoplantar Pustulosis With Propensity Score–Matched Patients With Pompholyx and Psoriasis Vulgaris by Sex and Age

**eTable 11.** Sensitivity Analysis of Patients With 1 or More Documented Dermatologist Visit During Study Period With a Diagnosis of PPP, Psoriasis Vulgaris, or Pompholyx

**eTable 12.** Sensitivity Analysis of Patients With 2 or More Documented Dermatologist Visits During Study Period With a Diagnosis of PPP, Psoriasis Vulgaris, or Pompholyx

**eTable 13.** Sensitivity Analysis of Patients With 4 or More Documented Dermatologist Visits During Study Period With a Diagnosis of PPP, Psoriasis Vulgaris, or Pompholyx

**eTable 14.** Sensitivity Analysis of Patients With 5 or More Documented Dermatologist Visits During Study Period With a Diagnosis of PPP, Psoriasis Vulgaris, or Pompholyx

**eFigure 1.** Distribution and Prevalence of Patients With Palmoplantar Pustulosis by Age and Sex in the Korean Population

**eFigure 2.** Forest Plots of the Risks of Comorbidities in Patients With Palmoplantar Pustulosis Compared With Propensity Score–Matched Patients With Pompholyx or Psoriasis Vulgaris

**eFigure 3.** Subgroup Analysis by Sex and Age After Propensity Score Matching

This supplementary material has been provided by the authors to give readers additional information about their work.

## **eMethods. Data Sources, Validation of Diagnostic Accuracy, and Categorization of Sociodemographic and Clinical Characteristics**

### **Data Sources**

The National Health Insurance Service-National Sample Cohort (NHIS-NSC) is a population-based cohort in Korea that have followed approximately one million individuals for 13 years from 2002 to 2015. Initially, it consisted of 1 025 340 subjects, which represented 2.2% of the total eligible Korean population in 2002. The database contains information on National Health Insurance (NHI) claims, including socio-demographics, diagnoses, and prescriptions. The NHIS-NSC database has been used in several cross-sectional studies of certain diseases in the country.

The National Health Screening Program (NHSP) is a regular, standardized medical examination provided by the Korean NHI Corporation. All insured adults aged 40 years and older are recommended to undergo this population-based health screening program every 1 or 2 years. It includes body measurements (height, weight, and waist circumference), laboratory tests (blood pressure and routine blood/urine tests), medical interviews, and questionnaires about lifestyle and medical history, including smoking and drinking habits. The body mass index (BMI) was calculated based on the subjects' height and weight. Blood pressure was measured by a healthcare personnel after at least 5 min of resting. Blood samples were obtained after overnight fasting (at least 8 h) to measure the fasting blood sugar (FBS) and cholesterol levels.

### **Validation of Diagnostic Accuracy**

In this study, patients who had  $\geq 3$  documented dermatologist visits between 2010 and 2019 with a primary or secondary diagnosis of PPP were defined as patients with PPP. Among 52 145 patients who had  $\geq 3$  documented dermatologist visits with a diagnosis of PPP, 14 746 patients also had at least one visit with a diagnosis of pompholyx. On the contrary, 26 151 patients among 391 566 patients who had  $\geq 3$  documented dermatologist visits with a diagnosis of pompholyx had at least one visit with a diagnosis of PPP. To minimize misclassification, we excluded these patients from the final statistical analysis.

To validate the diagnostic accuracy of PPP, we examined several algorithms based on the number of dermatologist visits with a diagnosis of PPP made by a dermatologist. A random sample of electronic medical records from the Seoul National University Hospital was reviewed. We randomly selected 200 patients with PPP (who visited the dermatology outpatient clinic at least once with ICD-code L403 as the principal or secondary diagnosis) and 200 suspected non-PPP patients (who visited the dermatology outpatient clinic at least once with ICD-code L301 [pompholyx] as the principal or secondary diagnosis) from November 2010 to October 2020. We defined the gold standard for the diagnosis of PPP as the presence of yellowish pustules on a scaly, erythematous, and desquamative background, localized on the palms and/or soles with a chronic relapsing course. All the clinical photographs and medical records were manually reviewed. In addition, histopathological and mycological examinations such as the KOH test to differentiate pompholyx, psoriasis vulgaris, tinea, palmoplantar keratoderma, and other possible differential diagnoses were reviewed if available. The sensitivity, specificity, positive predictive value, and negative predictive value of each algorithm were calculated (eTable 1). Since we sought to explore the differences between the characteristics of PPP patients and those of controls, an algorithm with relatively higher specificity was selected.

### **Categorization of Sociodemographic and Clinical Characteristics**

The region of residence was categorized into urban (metropolitan), suburban (city), and rural (other county) areas. Income was divided into 10 deciles based on the NHI premium, and then regrouped as low, middle, and high. The NHI premium was used as a reliable measure of income because it is proportional to the monthly income, including earnings and capital gains. The insurance type was categorized into health insurance and medical aid.

Smoking history was classified as non-, ex-, or current smoker. Smoking pack-years were categorized by 10 years (0, <10, <20, <30, and  $\geq 30$  pack-years). Alcohol consumption was classified as light, moderate, or heavy drinkers based on the drinking frequency and amount per session. Moderate drinkers were defined as those who consume up to 7 and 14 drinks per week for women and men, respectively, and those who consume more than this quantity were considered as heavy drinkers. Weight status was classified as underweight, normal, overweight, or obese according to the body mass index (BMI) with Korean-specific cut-off values of 18.5 kg/m<sup>2</sup>, 23 kg/m<sup>2</sup>, and 25 kg/m<sup>2</sup>. Abdominal obesity was defined as a waist circumference of > 90 cm in men or > 85 cm in women.

The criteria for the categorization of laboratory data from the NHSP were as follows: systolic blood pressure (BP),  $\geq 140$  mmHg as high BP; hemoglobin,  $<13$  g/dL in males and  $<12$  g/dL in females as anemia; glucose (FBS),  $<100$  mg/dL as normal level, 100-125 mg/dL as borderline, and  $\geq 126$  mg/dL as high; serum cholesterol level,  $<200$  mg/dL as normal level, 200-239 mg/dL as borderline, and  $\geq 240$  mg/dL as high; serum triglyceride level, 150 mg/dL, 200 mg/dL, and 500 mg/dL as cut-off values; LDL-cholesterol level, 100 mg/dL, 130 mg/dL, 160 mg/dL, and 190 mg/dL as cut-off values; HDL-cholesterol level, 40 mg/dL and 60 mg/dL as cut-off values; aspartate transaminase (AST) and alanine transaminase (ALT),  $< 40$  IU/L as normal level and  $\geq 40$  IU/L as high; gamma-glutamyl transferase (GGT),  $\geq 63$  IU/L in males and  $\geq 35$  IU/L in females as high; and creatinine,  $\leq 1.5$  mg/dL as normal level and  $> 1.5$  mg/dL as high.

## **eResults. Pilot Study**

In the pilot study using the NHIS-NSC database, we compared PPP patients to the general population. A total of 918 patients with PPP and 3672 age- and sex-matched controls without PPP were identified. PPP patients had a history of smoking more than the control group (45.07% vs. 36.36%,  $p < 0.0001$ ), and more patients were overweight or obese (43.10% vs. 36.38%,  $p = 0.0066$ ). Psoriasis, ankylosing spondylitis, rheumatoid arthritis, cardiometabolic diseases, type 1 diabetes, Graves disease, vitiligo, and alopecia areata were significantly more prevalent in patients with PPP (eTable 4).

**eTable 1.** Validation Algorithms of PPP

<b>No. of dermatologist visits</b>	<b>Sensitivity (%)</b>	<b>Specificity (%)</b>	<b>PPV (%)</b>	<b>NPV (%)</b>
≥1 / 10 years	96.13	79.18	74.50	97.00
≥2 / 10 years	83.87	80.82	73.45	88.79
≥3 / 10 years	74.19	85.71	76.67	84.00
≥4 / 10 years	61.94	88.16	76.80	78.55
≥5 / 10 years	49.68	89.80	75.49	73.83
≥6 / 10 years	42.58	91.02	75.00	71.47
≥7 / 10 years	35.48	91.43	72.37	69.14
≥8 / 10 years	30.97	91.43	69.57	67.67
≥9 / 10 years	27.10	92.65	70.00	66.76
≥10 / 10 years	23.87	93.88	71.15	66.09

Abbreviations: PPP, Palmoplantar pustulosis; PPV, positive predictive value; NPV, negative predictive value.

**eTable 2.** List of Collected *ICD-10* Codes of Studied Diseases and Comorbidities

<b>Diseases</b>	<b>ICD-10 code(s)</b>
Palmoplantar pustulosis	L403
Psoriasis vulgaris	L400, L408, L409
Pompholyx	L301
Inflammatory arthritis	
Psoriatic arthritis	L405, M070-073, M090
Ankylosing spondylitis	M45
Rheumatoid arthritis	M05, M06
Enteropathic arthritis	M074-076, M091-092
Juvenile arthritis	M08
Cardiometabolic disease	
Type 2 diabetes mellitus	E11
Hyperlipidemia	E78
Hypertension	I10, I15
Heart failure	I50
Coronary heart disease	I20-22
Myocardial infarction	I21, I22
Cerebrovascular disease	I60-I69
Autoimmune disease	
Endocrine autoimmune disease	
Type 1 diabetes mellitus	E10
Graves disease	E050
Hashimoto thyroiditis	E063
Inflammatory bowel disease	
Crohn disease	K50
Ulcerative colitis	K51
Connective tissue disease	
Behcet's disease	M352
Systemic lupus erythematosus	M32
Sjogren's syndrome	M350
Systemic sclerosis	M34
Dermatopolymyositis	M33
Dermatological disease	
Vitiligo	L80
Alopecia areata	L63
Hidradenitis suppurativa	L729

Abbreviations: ICD-10, International Classification of Diseases, 10th revision.

**eTable 3.** Period Prevalence of Palmoplantar Pustulosis in Korea (2010-2019)

Group	Prevalence rate, per 100,000 (95% CI) <sup>a</sup>	
	Crude	Age-standardized <sup>b</sup>
Total	72.58 (71.84, 73.31)	58.6 (57.97, 59.23)
Male	70.19 (69.17, 71.21)	57.06 (56.19, 57.94)
Female	74.96 (73.91, 76.02)	60.63 (59.71, 61.55)

Abbreviations: CI, confidence interval.

<sup>a</sup>The period prevalence was calculated assuming that the entire population of Korea in 2015 was at risk.

<sup>b</sup>Age-standardized prevalence rates were estimated using world standard population data (WHO 2000-2025).

**eTable 4.** Comparison Between Patients With PPP and Age- and Sex-Matched Controls Without PPP in the NHIS-NSC

Characteristic	PPP (n=918)	Control <sup>a</sup> (n=3,672)	p value <sup>b</sup>
Age, year, mean (SD)	53.78 (17.93)	53.78 (17.92)	1
Sex, n(%)			
M	460 (50.11)	1,840 (50.11)	1
F	458 (49.89)	1,832 (49.89)	
Smoking history, n(%)			
Non-smoker	362 (54.93)	1,607 (63.64)	<0.0001
Ex-smoker	105 (15.93)	408 (16.16)	
Current smoker	192 (29.14)	510 (20.2)	
Subtotal	659 (100)	2,525 (100)	
Alcohol consumption, n(%)			
Light	76 (11.53)	310 (12.28)	0.7251
Moderate	483 (73.29)	1,811 (71.72)	
Heavy	100 (15.17)	404 (16)	
Subtotal	659 (100)	2,525 (100)	
Weight status, n(%)			
Underweight or normal	375 (56.9)	1,609 (63.62)	0.0066
Overweight	251 (38.09)	813 (32.15)	
Obese	33 (5.01)	107 (4.23)	
Subtotal	659 (100)	2,529 (100)	
Comorbidities, prevalence rate (per 1,000)			
Psoriasis	206.97 (190/918)	10.08 (37/3,672)	<0.0001
Psoriatic arthritis	4.36 (4/918)	0.54 (2/3,672)	0.0169
Ankylosing spondylitis	10.89 (10/918)	1.09 (4/3,672)	<0.0001
Rheumatoid arthritis	52.29 (48/918)	17.16 (63/3,672)	<0.0001
Enteropathic arthritis	NA	NA	NA
Juvenile arthritis	NA	NA	NA
Type2 diabetes mellitus	196.08 (180/918)	47.93 (176/3,672)	<0.0001
Hyperlipidemia	286.49 (263/918)	77.34 (284/3,672)	<0.0001
Hypertension	355.12 (326/918)	95.04 (349/3,672)	<0.0001
Heart failure	18.52 (17/918)	7.9 (29/3,672)	0.0039
Coronary heart disease	86.06 (79/918)	24.24 (89/3,672)	<0.0001
Myocardial infarction	5.45 (5/918)	2.45 (9/3,672)	0.1733
Cerebrovascular disease	91.5 (84/918)	25.87 (95/3,672)	<0.0001
Type1 diabetes mellitus	13.07 (12/918)	3.81 (14/3,672)	0.0008
Graves disease	15.25 (14/918)	2.45 (9/3,672)	<0.0001
Hashimoto thyroiditis	6.54 (6/918)	1.36 (5/3,672)	0.0116
Crohn disease	3.27 (3/918)	0.54 (2/3,672)	0.0578
Ulcerative colitis	5.45 (5/918)	1.36 (5/3,672)	0.0326
Behcet's disease	1.09 (1/918)	1.36 (5/3,672)	1
Systemic lupus erythematosus	0 (0/918)	0.54 (2/3,672)	1
Sjogren's syndrome	0 (0/918)	0.82 (3/3,672)	1
Systemic sclerosis	0 (0/918)	0 (0/3,672)	NA
Dermatopolymyositis	1.09 (1/918)	0 (0/3,672)	0.2
Vitiligo	9.8 (9/918)	0.82 (3/3,672)	<0.0001
Alopecia areata	21.79 (20/918)	2.18 (8/3,672)	<0.0001
Hidradenitis suppurativa	0 (0/918)	0.27 (1/3,672)	1

Abbreviations: NA, not applicable; NHIS-NSC, the National Health Insurance Service-National Sample Cohort; PPP, palmoplantar pustulosis; SD, standard deviation.

<sup>a</sup>1:4 age- and sex- matched control.

<sup>b</sup>P value was calculated by comparing characteristics between two groups using the Student's t-test for continuous variables and the chi-square test or the Fisher's exact test for categorical variables.



**eTable 5.** Risk of Palmoplantar Pustulosis in Various Conditions Compared With Pompholyx and Psoriasis Vulgaris

Characteristic	vs Pompholyx				vs Psoriasis vulgaris			
	Univariable analysis		Multivariable analysis <sup>a</sup>		Univariable analysis		Multivariable analysis <sup>a</sup>	
	Crude OR (95% CI)	p value	Adjusted OR (95% CI)	p value	Crude OR (95% CI)	p value	Adjusted OR (95% CI)	p value
Smoking amount (PY)								
0	Reference		Reference		Reference		Reference	
< 10	0.94 (0.79-1.11)	0.437	1.21 (1.02-1.44)	0.0318	0.85 (0.72-1.01)	0.0612	1.03 (0.87-1.23)	0.7076
< 20	1.14 (0.97-1.33)	0.1249	1.42 (1.2-1.68)	<0.0001	0.94 (0.8-1.11)	0.4604	1.19 (1.01-1.4)	0.0431
< 30	1.04 (0.88-1.23)	0.6642	1.3 (1.1-1.54)	0.0024	0.87 (0.74-1.03)	0.1123	1.13 (0.95-1.34)	0.1626
>= 30	1.55 (1.5-1.6)	<0.0001	1.51 (1.45-1.58)	<0.0001	0.91 (0.88-0.94)	<0.0001	1.35 (1.3-1.41)	<0.0001
Abdominal obesity (Waist circumference)								
Normal	Reference		Reference		Reference		Reference	
Abdominal obesity	1.43 (1.4-1.47)	<0.0001	1.22 (1.18-1.25)	<0.0001	1.05 (1.02-1.07)	0.0013	1.04 (1.02-1.07)	0.0023
Hemoglobin								
Normal	Reference		Reference		Reference		Reference	
Anemia	0.96 (0.93-1)	0.0506	0.91 (0.88-0.95)	<0.0001	1.03 (0.99-1.07)	0.1708	0.88 (0.84-0.91)	0.1708
LDL-cholesterol								
<100 mg/dL	Reference		Reference		Reference		Reference	
<130 mg/dL	1.01 (0.98-1.04)	0.5002	0.99 (0.96-1.02)	0.5732	1.06 (1.02-1.09)	0.0007	1.06 (1.03-1.09)	0.0005
<160 mg/dL	1.14 (1.1-1.19)	<0.0001	1.05 (1.01-1.09)	0.0083	1.14 (1.1-1.18)	<0.0001	1.13 (1.09-1.17)	<0.0001
<190 mg/dL	1.25 (1.19-1.32)	<0.0001	1.09 (1.04-1.15)	0.0009	1.18 (1.12-1.24)	<0.0001	1.15 (1.09-1.21)	<0.0001
>190 mg/dL	1.33 (1.22-1.44)	<0.0001	1.15 (1.06-1.25)	0.0008	1.19 (1.1-1.29)	<0.0001	1.14 (1.05-1.24)	0.0017
HDL-cholesterol								
<40 mg/dL	1.62 (1.55-1.69)	<0.0001	1.26 (1.2-1.32)	<0.0001	1.02 (0.98-1.07)	0.2767	1.16 (1.11-1.21)	<0.0001
40-60 mg/dL	1.25 (1.21-1.28)	<0.0001	1.1 (1.06-1.13)	<0.0001	1.01 (0.98-1.04)	0.5947	1.09 (1.05-1.12)	<0.0001
>60 mg/dL	Reference		Reference		Reference		Reference	
Aspartate transaminase (AST)								
<40 IU/L	Reference		Reference		Reference		Reference	
>40 IU/L	1.26 (1.2-1.31)	<0.0001	1.11 (1.06-1.17)	<0.0001	0.82 (0.78-0.86)	<0.0001	0.87 (0.83-0.91)	<0.0001
Alanine transaminase (ALT)								
<40 IU/L	Reference		Reference		Reference		Reference	
>40 IU/L	1.17 (1.13-1.22)	<0.0001	1.12 (1.08-1.16)	<0.0001	0.84 (0.81-0.87)	<0.0001	0.96 (0.92-0.99)	<0.0001
γ-glutamyltransferase (GGT)								
Normal	Reference		Reference		Reference		Reference	
High	1.35 (1.3-1.4)	<0.0001	1.2 (1.16-1.24)	<0.0001	0.82 (0.8-0.85)	<0.0001	0.95 (0.91-0.98)	<0.0001
Creatinine								
Low or normal	Reference		Reference		Reference		Reference	
High	1.32 (1.21-1.45)	<0.0001	0.92 (0.84-1.02)	0.107	0.68 (0.62-0.75)	<0.0001	0.7 (0.64-0.77)	<0.0001

Abbreviations: CI, confidence interval; OR, odds ratio; PPP, palmoplantar pustulosis; SD, standard deviation.

<sup>a</sup>Adjusted by age, sex, region of residence, income, and insurance type.

**eTable 6.** Prevalence of Comorbidities in Palmoplantar Pustulosis, Psoriasis Vulgaris, and Pompholyx

Comorbidities	Prevalence per 1,000 (No. of patients)						
	PPP				PSV (n=332,279)	Pompholyx (n=365,415)	p value <sup>b</sup>
	PSV(-) (n=28,978)	PSV(+) (n=8,421)	p value <sup>a</sup>	Total (n=37,399)			
Psoriasis	0 (0)	1000 (8,421)	<0.0001	225.17 (8,421)	1000 (332,279)	3.5 (1,280)	<0.0001
Psoriatic arthritis	2.31 (67)	20.07 (169)	<0.0001	6.31 (236)	11.49 (3,817)	0.57 (209)	<0.0001
Ankylosing spondylitis	4.14 (120)	9.86 (83)	<0.0001	5.43 (203)	4.37 (1,451)	2.36 (863)	<0.0001
Rheumatoid arthritis	30.89 (895)	33.25 (280)	0.273	31.42 (1,175)	29.29 (9,732)	23.35 (8,534)	<0.0001
Enteropathic arthritis	0.07 (2)	0.24 (2)	0.2206	0.11 (4)	0.08 (25)	0.03 (11)	0.0142
Juvenile arthritis	0.1 (3)	0.24 (2)	0.3419	0.13 (5)	0.21 (70)	0.21 (76)	0.6086
Type2 diabetes mellitus	156.33 (4,530)	195.11 (1,643)	<0.0001	165.06 (6,173)	153.15 (50,890)	87.64 (32,026)	<0.0001
Hyperlipidemia	294.57 (8,536)	365.63 (3,079)	<0.0001	310.57 (11,615)	277.6 (92,240)	216.83 (79,233)	<0.0001
Hypertension	290.46 (8,417)	345.68 (2,911)	<0.0001	302.9 (11,328)	294.58 (97,884)	189.73 (69,330)	<0.0001
Heart failure	17.01 (493)	19.59 (165)	0.1128	17.59 (658)	19.48 (6,473)	8.98 (3,280)	<0.0001
Coronary heart disease	65.5 (1,898)	76.71 (646)	0.0003	68.02 (2,544)	65.04 (21,612)	38.75 (14,159)	<0.0001
Myocardial infarction	8.94 (259)	10.81 (91)	0.117	9.36 (350)	9.51 (3,159)	4.57 (1,670)	<0.0001
Cerebrovascular disease	72.92 (2,113)	77.31 (651)	0.1753	73.91 (2,764)	73.73 (24,500)	42.54 (15,544)	<0.0001
Type1 diabetes mellitus	8.28 (240)	9.98 (84)	0.1401	8.66 (324)	10.28 (3,417)	4.44 (1,623)	<0.0001
Graves disease	8.8 (255)	13.18 (111)	0.0003	9.79 (366)	6.07 (2,016)	7.46 (2,725)	<0.0001
Hashimoto thyroiditis	6.76 (196)	6.18 (52)	0.5579	6.63 (248)	5.37 (1,783)	7.28 (2,661)	<0.0001
Crohn disease	1.21 (35)	1.31 (11)	0.8205	1.23 (46)	1.04 (344)	0.78 (284)	0.0002
Ulcerative colitis	2.48 (72)	2.49 (21)	0.9882	2.49 (93)	2.58 (856)	2.15 (785)	0.001
Behcet's disease	1.62 (47)	1.66 (14)	0.9352	1.63 (61)	1.17 (388)	1.02 (373)	0.0018
Systemic lupus erythematosus	0.97 (28)	0.95 (8)	0.9662	0.96 (36)	1.41 (467)	1.03 (375)	<0.0001
Sjogren's syndrome	1.35 (39)	1.07 (9)	0.5319	1.28 (48)	1.52 (506)	1.52 (557)	0.5075
Systemic sclerosis	0.1 (3)	0.12 (1)	1	0.11 (4)	0.43 (142)	0.2 (73)	<0.0001
Dermatopolymyositis	0.28 (8)	0.36 (3)	0.7193	0.29 (11)	0.42 (139)	0.25 (91)	0.0005
Vitiligo	9.49 (275)	16.51 (139)	<0.0001	11.07 (414)	19.41 (6,449)	5.25 (1,918)	<0.0001
Alopecia areata	23.6 (684)	20.78 (175)	0.128	22.97 (859)	27.81 (9,240)	23.14 (8,455)	<0.0001
Hidradenitis suppurativa	0.9 (26)	0.83 (7)	0.8576	0.88 (33)	1.02 (340)	0.94 (345)	0.4782

Abbreviations: PPP, palmoplantar pustulosis; PSV, psoriasis vulgaris.

<sup>a</sup>P value was calculated by comparing two groups (PPP without PSV and PPP with PSV group) using the chi-square test or the Fisher's exact test.

<sup>b</sup>P value was calculated by comparing three groups (PPP, PSV, and pompholyx group) using the chi-square test or the Fisher's exact test.

**eTable 7.** Comparison Between Patients With Palmoplantar Pustulosis and Propensity Score–Matched Controls With Pompholyx<sup>a</sup>

Characteristic	PPP (n=31,659)	Pompholyx (n=158,295)	p value <sup>b</sup>
Age, year, mean (SD)	46.37 (16.32)	46.38 (16.33)	0.8854
Age group, years, n(%)			
0 - 19	2,363 (7.46)	11,793 (7.45)	1
20 - 39	7,413 (23.42)	37,076 (23.42)	
40 - 59	15,359 (48.51)	76,756 (48.49)	
60 - 79	6,249 (19.74)	31,294 (19.77)	
80 -	275 (0.87)	1,376 (0.87)	
Sex, n(%)			
M	14,869 (46.97)	74,311 (46.94)	0.9443
F	16,790 (53.03)	83,984 (53.06)	
Residence, n(%)			
Urban	15,460 (48.83)	77,187 (48.76)	0.9216
Suburban	13,672 (43.19)	68,539 (43.3)	
Rural	2,527 (7.98)	12,569 (7.94)	
Income, n(%)			
Low	8,106 (25.6)	40,320 (25.47)	0.999
Middle	8,222 (25.97)	41,255 (26.06)	
High	15,331 (48.43)	76,720 (48.47)	
Insurance type, n(%)			
Health insurance	30,675 (96.89)	153,551 (97)	0.291
Medical aid	984 (3.11)	4,744 (3)	
Comorbidities	Prevalence rate, per 1,000 (No. of patients)		
Psoriasis	222.65 (7,049)	4.23 (670)	
Psoriatic arthritis	6.41 (203)	0.78 (124)	
Ankylosing spondylitis	5.27 (167)	2.78 (440)	
Rheumatoid arthritis	28.87 (914)	29.6 (4,685)	
Enteropathic arthritis	0.13 (4)	0.03 (5)	
Juvenile arthritis	0.16 (5)	0.17 (27)	
Type2 diabetes mellitus	144.16 (4,564)	116.52 (18,444)	
Hyperlipidemia	289.33 (9,160)	286.79 (45,398)	
Hypertension	264.22 (8,365)	252.38 (39,951)	
Heart failure	13.05 (413)	11.23 (1,778)	
Coronary heart disease	55.5 (1,757)	52.25 (8,271)	
Myocardial infarction	7.61 (241)	6.18 (979)	
Cerebrovascular disease	58.78 (1,861)	55.97 (8,859)	
Type1 diabetes mellitus	7.68 (243)	5.76 (912)	
Graves disease	9.82 (311)	7.8 (1,235)	
Hashimoto thyroiditis	7.04 (223)	7.68 (1,215)	
Crohn disease	1.39 (44)	0.8 (127)	
Ulcerative colitis	2.62 (83)	2.29 (362)	
Behcet's disease	1.67 (53)	1.16 (183)	
Systemic lupus erythematosus	1.04 (33)	1.02 (161)	
Sjogren's syndrome	1.3 (41)	1.78 (282)	
Systemic sclerosis	0.13 (4)	0.27 (43)	
Dermatopolymyositis	0.28 (9)	0.29 (46)	
Vitiligo	10.71 (339)	5.65 (894)	
Alopecia areata	25.08 (794)	23.84 (3,773)	
Hidradenitis suppurativa	0.98 (31)	0.96 (152)	

Abbreviations: PPP, palmoplantar pustulosis; SD, standard deviation.

<sup>a</sup>Propensity score matching by age, sex, region of residence, income, and insurance type.

<sup>b</sup>P value was calculated by comparing demographic covariates between two groups using the Student's t-test for continuous variables and the chi-square test or the Fisher's exact test for categorical variables.

**eTable 8.** Comparison Between Patients With Palmoplantar Pustulosis and Propensity Score–Matched Controls With Psoriasis Vulgaris<sup>a</sup>

Characteristics	PPP (n=32,558)	Psoriasis vulgaris (n=162,790)	p value <sup>b</sup>
Age, year, mean (SD)	48.35 (17.07)	48.39 (17.05)	0.7164
Age group, years, n(%)			
0 - 19	2,036 (6.25)	9,973 (6.13)	0.9272
20 - 39	7,376 (22.65)	37,156 (22.82)	
40 - 59	14,540 (44.66)	72,536 (44.56)	
60 - 79	7,886 (24.22)	39,481 (24.25)	
80 -	720 (2.21)	3,644 (2.24)	
Sex, n(%)			
M	17,286 (53.09)	86,651 (53.23)	0.654
F	15,272 (46.91)	76,139 (46.77)	
Residence, n(%)			
Urban	15,674 (48.14)	78,620 (48.3)	0.5731
Suburban	14,007 (43.02)	70,073 (43.05)	
Rural	2,877 (8.84)	14,097 (8.66)	
Income, n(%)			
Low	8,240 (25.31)	40,887 (25.12)	0.9641
Middle	8,517 (26.16)	42,569 (26.15)	
High	15,801 (48.53)	79,334 (48.73)	
Insurance type, n(%)			
Health insurance	31,150 (95.68)	156,095 (95.89)	0.08
Medical aid	1,408 (4.32)	6,695 (4.11)	
Comorbidities	Prevalence rate, per 1,000 (No. of patients)		
Psoriatic arthritis	6.08 (198)	11.79 (1,920)	
Ankylosing spondylitis	5.71 (186)	4.21 (686)	
Rheumatoid arthritis	29.39 (957)	31.57 (5,140)	
Enteropathic arthritis	0.12 (4)	0.08 (13)	
Juvenile arthritis	0.15 (5)	0.22 (36)	
Type2 diabetes mellitus	160.94 (5,240)	159.36 (25,943)	
Hyperlipidemia	299.04 (9,736)	299.82 (48,807)	
Hypertension	295.41 (9,618)	306.21 (49,848)	
Heart failure	17.08 (556)	18.45 (3,004)	
Coronary heart disease	67.54 (2,199)	65.83 (10,716)	
Myocardial infarction	9.89 (322)	9.5 (1,547)	
Cerebrovascular disease	71.84 (2,339)	72.05 (11,729)	
Type1 diabetes mellitus	8.82 (287)	10.41 (1,694)	
Graves disease	9.15 (298)	6.57 (1,069)	
Hashimoto thyroiditis	6.39 (208)	6.55 (1,067)	
Crohn disease	1.32 (43)	0.93 (152)	
Ulcerative colitis	2.64 (86)	2.67 (434)	
Behcet's disease	1.66 (54)	1.29 (210)	
Systemic lupus erythematosus	0.98 (32)	1.6 (260)	
Sjogren's syndrome	1.14 (37)	1.68 (273)	
Systemic sclerosis	0.12 (4)	0.42 (69)	
Dermatopolymyositis	0.31 (10)	0.4 (65)	
Vitiligo	10.75 (350)	20.93 (3,408)	
Alopecia areata	23.37 (761)	27.02 (4,399)	
Hidradenitis suppurativa	0.89 (29)	1.09 (178)	

Abbreviations: PPP, palmoplantar pustulosis; SD, standard deviation.

<sup>a</sup>Propensity score matching by age, sex, region of residence, income, and insurance type

<sup>b</sup>P value was calculated by comparing demographic covariates between two groups using the Student's t-test for continuous variables and the chi-square test or the Fisher's exact test for categorical variables.

**eTable 9.** Subgroup Analysis Comparing Patients With Palmoplantar Pustulosis With Patients With Pompholyx and Psoriasis Vulgaris by Sex and Age

Comorbidities	PPP vs Pompholyx									
	Male		Female		<20 years		20-59 years		≥60 years	
	aOR (95% CI) <sup>a</sup>	p value	aOR (95% CI) <sup>a</sup>	p value	aOR (95% CI) <sup>a</sup>	p value	aOR (95% CI) <sup>a</sup>	p value	aOR (95% CI) <sup>a</sup>	p value
Psoriasis	61 (55.74-66.77)	<0.0001	89.04 (80.42-98.58)	<0.0001	39.37 (22.91-67.66)	<0.0001	79.54 (62.02-102.01)	<0.0001	100.38 (84.09-119.81)	<0.0001
Psoriatic arthritis	7.48 (5.42-10.32)	<0.0001	8.43(6.43-11.06)	<0.0001	NA	NA	15.67 (3.45-71.09)	0.0004	19.85 (10.54-37.41)	<0.0001
Ankylosing spondylitis	1.94 (1.56-2.41)	<0.0001	1.85 (1.38-2.46)	<0.0001	NA	NA	1.41 (0.56-3.51)	0.4634	2.96 (2.07-4.24)	<0.0001
Rheumatoid arthritis	1.03 (0.91-1.17)	0.6479	1.01 (0.94-1.1)	0.7274	NA	NA	1.16 (0.64-2.07)	0.6298	1.41 (1.1-1.81)	0.007
Enteropathic arthritis	3.09 (0.59-16.25)	0.1821	1.42(0.16-12.31)	0.7521	NA	NA	NA	NA	NA	NA
Juvenile arthritis	1.93 (0.55-6.81)	0.3087	NA	NA	NA	NA	NA	NA	7.55 (0.67-85.63)	0.1027
Type2 diabetes mellitus	1.2 (1.14-1.25)	<0.0001	1.5 (1.43-1.58)	<0.0001	1.6 (0.49-5.27)	0.4398	1.78 (1.2-2.65)	0.0046	1.36 (1.16-1.59)	0.0001
Hyperlipidemia	0.97 (0.94-1.01)	0.1814	1.1 (1.06-1.15)	<0.0001	1.75 (0.87-3.53)	0.1168	1.21 (0.95-1.54)	0.117	1.11 (1.01-1.23)	0.035
Hypertension	1.04 (1-1.08)	0.0849	1.16 (1.11-1.21)	<0.0001	0.85 (0.26-2.76)	0.7862	1.56 (1.16-2.1)	0.0034	1.13 (1.01-1.27)	0.0396
Heart failure	1.11 (0.96-1.27)	0.1515	1.18 (1.03-1.35)	0.0196	NA	NA	0.73 (0.1-5.39)	0.758	2.11 (1.22-3.65)	0.0073
Coronary heart disease	1.05 (0.98-1.12)	0.1433	1.19 (1.1-1.29)	<0.0001	NA	NA	0.25 (0.04-1.81)	0.1697	1.18 (0.84-1.65)	0.3436
Myocardial infarction	1.12 (0.97-1.3)	0.1333	1.35 (1.01-1.81)	0.0443	NA	NA	NA	NA	0.38 (0.09-1.55)	0.1775
Cerebrovascular disease	1.06 (0.99-1.14)	0.0752	1.1 (1.03-1.18)	0.0061	2.09 (0.26-16.83)	0.4875	1.19 (0.52-2.73)	0.6771	1.04 (0.73-1.47)	0.8346
Type1 diabetes mellitus	1.18 (0.98-1.41)	0.0746	1.54 (1.27-1.87)	<0.0001	NA	NA	2.19 (0.66-7.25)	0.2006	1.05 (0.49-2.27)	0.9034
Graves disease	0.92 (0.71-1.2)	0.5451	1.39 (1.2-1.6)	<0.0001	1.64 (0.39-6.98)	0.5002	0.78 (0.38-1.58)	0.4905	1.33 (0.97-1.82)	0.0731
Hashimoto thyroiditis	0.84 (0.56-1.25)	0.382	0.94 (0.81-1.09)	0.4051	NA	NA	0.87 (0.41-1.85)	0.7138	1.04 (0.72-1.5)	0.8444
Crohn disease	1.75 (1.09-2.8)	0.0198	1.38 (0.71-2.7)	0.3468	2.13 (0.26-17.5)	0.4831	1.33 (0.41-4.33)	0.6356	3.21 (1.6-6.46)	0.0011
Ulcerative colitis	1 (0.73-1.37)	0.9786	1.09 (0.75-1.58)	0.6503	3.7 (0.43-31.94)	0.2347	0.56 (0.14-2.3)	0.4234	1.68 (1-2.84)	0.0497
Behcet's disease	1.39 (0.87-2.23)	0.1672	1.3 (0.88-1.93)	0.188	NA	NA	1.31 (0.31-5.49)	0.7145	1.46 (0.58-3.67)	0.4191
Systemic lupus erythematosus	0.29 (0.04-2.17)	0.2289	1.21 (0.82-1.79)	0.3327	NA	NA	0.64 (0.09-4.67)	0.6582	1.37 (0.55-3.4)	0.5047
Sjogren's syndrome	0.45 (0.19-1.02)	0.0565	0.73 (0.51-1.04)	0.077	NA	NA	NA	NA	2.28 (1.03-5.04)	0.0412
Systemic sclerosis	NA	NA	0.55 (0.2-1.53)	0.255	NA	NA	NA	NA	NA	NA
Dermatopolymyositis	0.62 (0.19-2.04)	0.4316	1.22 (0.52-2.89)	0.6477	NA	NA	NA	NA	2.7 (0.6-12.28)	0.1976
Vitiligo	1.77 (1.45-2.16)	<0.0001	1.94 (1.65-2.27)	<0.0001	2.53 (0.74-8.69)	0.1398	1.55 (0.81-2.96)	0.1868	2.62 (1.85-3.7)	<0.0001
Alopecia areata	0.84 (0.75-0.95)	0.0047	1.15 (1.03-1.29)	0.0103	1.76 (0.91-3.41)	0.0957	1.14 (0.85-1.53)	0.3707	0.93 (0.77-1.13)	0.4662
Hidradenitis suppurativa	0.78 (0.43-1.41)	0.4115	1.01 (0.59-1.73)	0.9741	2.25 (0.27-18.76)	0.4549	0.48 (0.07-3.51)	0.4706	1.64 (0.58-4.63)	0.3513

**eTable 9.** Subgroup Analysis Comparing Patients With Palmoplantar Pustulosis With Patients With Pompholyx and Psoriasis Vulgaris by Sex and Age (continued)

Comorbidities	PPP vs Psoriasis vulgaris									
	Male		Female		<20 years		20-59 years		≥60 years	
	aOR (95% CI) <sup>a</sup>	p value	aOR (95% CI) <sup>a</sup>	p value	aOR (95% CI) <sup>a</sup>	p value	aOR (95% CI) <sup>a</sup>	p value	aOR (95% CI) <sup>a</sup>	p value
Psoriasis	NA	NA	NA	NA	NA	NA	NA	NA	NA	NA
Psoriatic arthritis	0.44 (0.35-0.55)	<0.0001	0.64 (0.53-0.78)	<0.0001	NA	NA	0.17 (0.05-0.53)	0.0022	0.39 (0.26-0.59)	<0.0001
Ankylosing spondylitis	1.36 (1.11-1.67)	0.0031	1.36 (1.03-1.81)	0.0327	NA	NA	0.79 (0.32-1.94)	0.6033	2.16 (1.52-3.07)	<0.0001
Rheumatoid arthritis	0.89 (0.79-1.01)	0.0625	1.02 (0.95-1.11)	0.5588	NA	NA	0.84 (0.47-1.52)	0.5714	1.09 (0.85-1.4)	0.4921
Enteropathic arthritis	1.95 (0.43-8.81)	0.3863	0.61 (0.08-4.72)	0.635	NA	NA	NA	NA	2.35 (0.27-20.21)	0.438
Juvenile arthritis	2.01 (0.58-6.89)	0.2691	NA	NA	NA	NA	NA	NA	7.18 (0.64-80.12)	0.1094
Type2 diabetes mellitus	1.05 (1.01-1.1)	0.0253	1.15 (1.1-1.21)	<0.0001	1.18 (0.36-3.89)	0.7899	1.31 (0.88-1.94)	0.1871	1.01 (0.87-1.19)	0.8628
Hyperlipidemia	1.06 (1.02-1.1)	0.0048	1.11 (1.07-1.16)	<0.0001	1.16 (0.58-2.33)	0.6718	0.98 (0.77-1.25)	0.8914	0.97 (0.88-1.07)	0.5036
Hypertension	0.97 (0.93-1.01)	0.1443	0.96 (0.92-1.01)	0.097	1.16 (0.35-3.81)	0.8042	1.27 (0.94-1.71)	0.1137	0.91 (0.81-1.02)	0.1155
Heart failure	0.91 (0.8-1.04)	0.1683	0.95 (0.83-1.09)	0.4735	NA	NA	0.47 (0.06-3.47)	0.461	1.29 (0.76-2.2)	0.353
Coronary heart disease	1.13 (1.06-1.2)	0.0001	1.1 (1.02-1.19)	0.0151	NA	NA	0.27 (0.04-1.97)	0.1982	1.17 (0.84-1.64)	0.3601
Myocardial infarction	1.09 (0.95-1.26)	0.2267	1.06 (0.8-1.4)	0.7034	NA	NA	NA	NA	0.45 (0.11-1.84)	0.2652
Cerebrovascular disease	1.03 (0.96-1.1)	0.4095	1.09 (1.02-1.17)	0.0149	2.25 (0.26-19.67)	0.4642	1.27 (0.55-2.92)	0.5796	0.94 (0.66-1.33)	0.7122
Type1 diabetes mellitus	0.91 (0.77-1.08)	0.2721	0.96 (0.8-1.16)	0.7018	NA	NA	1.24 (0.38-4.05)	0.7176	0.64 (0.3-1.38)	0.2569
Graves disease	1.1 (0.85-1.43)	0.4611	1.51 (1.31-1.75)	<0.0001	1.63 (0.36-7.37)	0.5275	0.73 (0.36-1.48)	0.3802	1.32 (0.96-1.82)	0.0877
Hashimoto thyroiditis	0.97 (0.65-1.44)	0.8706	1.07 (0.92-1.25)	0.3994	NA	NA	0.77 (0.36-1.65)	0.4947	1.17 (0.8-1.7)	0.4221
Crohn disease	1.58 (1-2.5)	0.0494	1 (0.51-1.94)	0.9884	1.26 (0.16-10.01)	0.8248	0.87 (0.27-2.81)	0.8124	2.4 (1.22-4.75)	0.0116
Ulcerative colitis	1.05 (0.77-1.44)	0.744	0.83 (0.57-1.2)	0.3148	1.89 (0.23-15.52)	0.554	0.44 (0.11-1.79)	0.2501	1.6 (0.95-2.71)	0.0791
Behcet's disease	1.61 (1.02-2.56)	0.0413	1.11 (0.75-1.64)	0.6158	NA	NA	1.3 (0.3-5.6)	0.7267	1.11 (0.44-2.79)	0.8226
Systemic lupus erythematosus	0.12 (0.02-0.88)	0.0366	0.81 (0.55-1.19)	0.2739	NA	NA	0.29 (0.04-2.08)	0.217	0.69 (0.28-1.71)	0.4223
Sjogren's syndrome	0.52 (0.23-1.18)	0.1157	0.75 (0.53-1.07)	0.1107	NA	NA	NA	NA	1.99 (0.88-4.48)	0.0984
Systemic sclerosis	NA	NA	0.4 (0.15-1.11)	0.0773	NA	NA	NA	NA	NA	NA
Dermatopolymyositis	0.58 (0.18-1.87)	0.3631	0.65 (0.28-1.51)	0.3192	NA	NA	NA	NA	1.98 (0.44-8.96)	0.3764
Vitiligo	0.59 (0.49-0.7)	<0.0001	0.5 (0.43-0.58)	<0.0001	0.42 (0.13-1.35)	0.1473	0.31 (0.16-0.58)	0.0002	0.62 (0.44-0.85)	0.0037
Alopecia areata	0.85 (0.76-0.95)	0.0061	0.89 (0.79-0.99)	0.0284	1.16 (0.6-2.24)	0.6618	0.82 (0.61-1.09)	0.169	0.77 (0.64-0.93)	0.0063
Hidradenitis suppurativa	0.67 (0.37-1.2)	0.18	1.04 (0.6-1.79)	0.9025	3.69 (0.4-34.46)	0.2525	0.69 (0.09-5.18)	0.7172	1.01 (0.36-2.82)	0.9792

Abbreviations: aOR, adjusted odds ratio; CI, confidence interval; NA, not applicable; PPP, palmoplantar pustulosis; SD, standard deviation.

<sup>a</sup>Adjusted by age, sex, region of residence, income, and insurance type.

**eTable 10.** Subgroup Analysis Comparing Patients With Palmoplantar Pustulosis With Propensity Score–Matched Patients With Pompholyx and Psoriasis Vulgaris by Sex and Age<sup>a</sup>

Comorbidities	PPP vs Pompholyx									
	Male		Female		<20 years		20-59 years		≥60 years	
	aOR (95% CI) <sup>b</sup>	p value	aOR (95% CI) <sup>b</sup>	p value	aOR (95% CI) <sup>b</sup>	p value	aOR (95% CI) <sup>b</sup>	p value	aOR (95% CI) <sup>b</sup>	p value
Psoriasis	59.41 (51.53-68.51)	<0.0001	77.15 (65.36-91.07)	<0.0001	NA	NA	109.73 (48.99-245.77)	<0.0001	121.27 (76.74-191.65)	<0.0001
Psoriatic arthritis	7.31 (4.92-10.84)	<0.0001	7.97 (5.63-11.29)	<0.0001	NA	NA	NA	NA	62.24 (7.64-506.74)	0.0001
Ankylosing spondylitis	1.76 (1.36-2.27)	<0.0001	2.07 (1.47-2.93)	<0.0001	NA	NA	1.66 (0.39-6.95)	0.4914	2.17 (1.37-3.44)	0.001
Rheumatoid arthritis	1 (0.86-1.16)	0.9619	1.01 (0.92-1.11)	0.8749	NA	NA	1.32 (0.59-2.99)	0.4993	1.48 (1.09-2)	0.0131
Enteropathic arthritis	NA	NA	NA	NA	NA	NA	NA	NA	NA	NA
Juvenile arthritis	1.48 (0.28-7.75)	0.6406	NA	NA	NA	NA	NA	NA	NA	NA
Type2 diabetes mellitus	1.19 (1.12-1.25)	<0.0001	1.39 (1.3-1.47)	<0.0001	NA	NA	1.37 (0.66-2.82)	0.3956	1.36 (1.09-1.7)	0.0062
Hyperlipidemia	0.99 (0.94-1.04)	0.627	1.01 (0.97-1.06)	0.6306	0.93 (0.18-4.93)	0.9331	1.09 (0.77-1.52)	0.6365	1.02 (0.9-1.15)	0.7442
Hypertension	1.07 (1.02-1.13)	0.0054	1.06 (1.01-1.12)	0.0198	NA	NA	1.38 (0.83-2.31)	0.2173	1.03 (0.89-1.2)	0.6842
Heart failure	1.26 (1.06-1.5)	0.0081	1.01 (0.85-1.21)	0.8972	NA	NA	0.51 (0.04-6.16)	0.5974	1.62 (0.78-3.37)	0.1966
Coronary heart disease	1.02 (0.95-1.11)	0.5803	1.1 (1-1.21)	0.0436	NA	NA	0.38 (0.03-4.32)	0.4343	0.94 (0.61-1.44)	0.7707
Myocardial infarction	1.05 (0.88-1.26)	0.5874	1.59 (1.07-2.35)	0.0208	NA	NA	NA	NA	0.21 (0.03-1.69)	0.1415
Cerebrovascular disease	1.07 (0.98-1.16)	0.1238	1.07 (0.98-1.16)	0.1195	NA	NA	0.74 (0.23-2.37)	0.6174	1.06 (0.7-1.61)	0.7915
Type1 diabetes mellitus	1.19 (0.95-1.47)	0.125	1.52 (1.2-1.93)	0.0005	NA	NA	1.6 (0.25-10.18)	0.6192	1.65 (0.6-4.51)	0.3306
Graves disease	0.88 (0.65-1.17)	0.3756	1.25 (1.06-1.48)	0.0086	1.15 (0.01-97.91)	0.9524	1.42 (0.58-3.46)	0.4427	1.37 (0.93-2.02)	0.1158
Hashimoto thyroiditis	0.77 (0.48-1.24)	0.2781	1.01 (0.86-1.2)	0.9026	NA	NA	0.81 (0.31-2.12)	0.6703	1.12 (0.74-1.72)	0.5907
Crohn disease	1.94 (1.12-3.37)	0.0176	1.35 (0.65-2.82)	0.4165	NA	NA	3.07 (0.38-24.78)	0.2921	10.37 (2.11-51.06)	0.004
Ulcerative colitis	1.16 (0.81-1.66)	0.4207	1.23 (0.8-1.89)	0.3413	NA	NA	1.14 (0.19-7)	0.8894	1.72 (0.84-3.53)	0.1369
Behcet's disease	1.39 (0.77-2.51)	0.2781	1.4 (0.89-2.2)	0.1493	NA	NA	1.56 (0.15-16.5)	0.7136	1.7 (0.45-6.52)	0.4369
Systemic lupus erythematosus	0.3 (0.04-2.4)	0.2584	1.16 (0.75-1.8)	0.5014	NA	NA	NA	NA	1.03 (0.34-3.12)	0.9619
Sjogren's syndrome	0.45 (0.18-1.14)	0.0922	0.77 (0.51-1.15)	0.1945	NA	NA	NA	NA	3.02 (0.93-9.82)	0.0663
Systemic sclerosis	NA	NA	0.88 (0.29-2.66)	0.8256	NA	NA	NA	NA	NA	NA
Dermatopolymyositis	0.57 (0.13-2.6)	0.4673	1.19 (0.43-3.26)	0.7429	NA	NA	NA	NA	9.45 (0.64-138.71)	0.1013
Vitiligo	1.76 (1.38-2.26)	<0.0001	2.02 (1.67-2.44)	<0.0001	NA	NA	1.79 (0.79-4.08)	0.1635	2.46 (1.51-4.02)	0.0003
Alopecia areata	0.84 (0.74-0.96)	0.0101	1.22 (1.08-1.38)	0.0014	2.18 (0.31-15.52)	0.4369	1.03 (0.71-1.48)	0.8958	0.99 (0.79-1.24)	0.9337
Hidradenitis suppurativa	0.87 (0.43-1.76)	0.6958	0.9 (0.49-1.66)	0.7402	NA	NA	0.65 (0.06-6.98)	0.7244	1.45 (0.27-7.84)	0.6686

**eTable 10.** Subgroup Analysis Comparing Patients With Palmoplantar Pustulosis With Propensity Score–Matched Patients With Pompholyx and Psoriasis Vulgaris by Sex and Age (continued)

Comorbidities	PPP vs Psoriasis vulgaris									
	Male		Female		<20 years		20-59 years		≥60 years	
	aOR (95% CI) <sup>b</sup>	p value	aOR (95% CI) <sup>b</sup>	p value	aOR (95% CI) <sup>b</sup>	p value	aOR (95% CI) <sup>b</sup>	p value	aOR (95% CI) <sup>b</sup>	p value
Psoriasis	NA	NA	NA	NA	NA	NA	NA	NA	NA	NA
Psoriatic arthritis	0.41 (0.33-0.53)	<0.0001	0.57 (0.45-0.72)	<0.0001	NA	NA	0.16 (0.05-0.54)	0.0031	0.34 (0.21-0.55)	<0.0001
Ankylosing spondylitis	1.28 (1.02-1.61)	0.0306	1.45 (1.04-2.01)	0.0286	NA	NA	0.94 (0.33-2.68)	0.9093	2.24 (1.39-3.6)	0.0009
Rheumatoid arthritis	0.88 (0.78-1)	0.0566	1.01 (0.92-1.11)	0.857	NA	NA	0.78 (0.36-1.72)	0.5403	1.2 (0.89-1.62)	0.2349
Enteropathic arthritis	1.77 (0.27-11.69)	0.5543	0.47 (0.04-5.23)	0.5373	NA	NA	NA	NA	3.13 (0.09-108.65)	0.5282
Juvenile arthritis	3.58 (0.51-25.07)	0.1993	NA	NA	NA	NA	NA	NA	NA	NA
Type2 diabetes mellitus	1.01 (0.96-1.06)	0.7265	1.03 (0.96-1.09)	0.4132	NA	NA	1.16 (0.61-2.24)	0.6504	0.98 (0.8-1.19)	0.8123
Hyperlipidemia	0.98 (0.94-1.02)	0.3987	0.99 (0.94-1.03)	0.5344	1.15 (0.19-6.92)	0.8761	0.82 (0.6-1.11)	0.1997	0.93 (0.83-1.05)	0.2455
Hypertension	0.93 (0.89-0.97)	0.0009	0.94 (0.89-0.99)	0.0215	0.83 (0.06-11.06)	0.8872	1.3 (0.86-1.98)	0.2168	0.92 (0.8-1.06)	0.2493
Heart failure	0.87 (0.76-1.01)	0.059	0.93 (0.79-1.1)	0.3802	NA	NA	NA	NA	1.59 (0.81-3.14)	0.178
Coronary heart disease	1.07 (1-1.15)	0.05	0.98 (0.89-1.08)	0.7097	NA	NA	0.28 (0.03-2.51)	0.2571	1.21 (0.79-1.83)	0.3812
Myocardial infarction	0.97 (0.83-1.13)	0.6754	0.9 (0.63-1.27)	0.5443	NA	NA	NA	NA	0.66 (0.14-3.17)	0.6033
Cerebrovascular disease	1.02 (0.95-1.09)	0.637	1.07 (0.98-1.16)	0.1382	NA	NA	0.83 (0.25-2.72)	0.7548	0.91 (0.6-1.39)	0.6639
Type1 diabetes mellitus	0.87 (0.72-1.04)	0.1215	0.98 (0.78-1.23)	0.8487	NA	NA	1.22 (0.02-64.33)	0.9216	0.53 (0.21-1.33)	0.1756
Graves disease	1.06 (0.8-1.4)	0.7087	1.47 (1.23-1.75)	<0.0001	NA	NA	0.64 (0.27-1.53)	0.3182	1.33 (0.9-1.96)	0.1511
Hashimoto thyroiditis	0.87 (0.57-1.34)	0.5364	1.06 (0.89-1.27)	0.5084	NA	NA	0.71 (0.27-1.86)	0.4879	1.08 (0.7-1.67)	0.724
Crohn disease	2.07 (1.21-3.56)	0.0079	1.57 (0.74-3.33)	0.2438	NA	NA	0.94 (0.23-3.83)	0.9333	3.19 (1.14-8.91)	0.0271
Ulcerative colitis	1.05 (0.75-1.46)	0.7821	0.83 (0.54-1.27)	0.3793	NA	NA	0.4 (0.08-1.95)	0.256	1.36 (0.71-2.59)	0.354
Behcet's disease	1.38 (0.81-2.38)	0.24	1.2 (0.75-1.93)	0.4496	NA	NA	0.72 (0.06-8.75)	0.7962	2.87 (0.72-11.54)	0.1371
Systemic lupus erythematosus	0.13 (0.02-0.95)	0.0449	0.91 (0.59-1.4)	0.6697	NA	NA	0.24 (0.03-2.15)	0.1992	0.84 (0.3-2.39)	0.743
Sjogren's syndrome	0.51 (0.21-1.24)	0.1376	0.7 (0.46-1.08)	0.1083	NA	NA	NA	NA	1.88 (0.66-5.32)	0.2377
Systemic sclerosis	NA	NA	0.46 (0.16-1.32)	0.1476	NA	NA	NA	NA	NA	NA
Dermatopolymyositis	0.69 (0.2-2.42)	0.5647	0.77 (0.29-2.07)	0.6013	NA	NA	NA	NA	NA	NA
Vitiligo	0.59 (0.49-0.71)	<0.0001	0.51 (0.43-0.61)	<0.0001	0.94 (0.12-7.11)	0.9506	0.36 (0.18-0.71)	0.0032	0.7 (0.48-1.02)	0.0596
Alopecia areata	0.88 (0.78-1)	0.0503	0.84 (0.74-0.96)	0.0092	2.09 (0.47-9.22)	0.3303	0.83 (0.58-1.18)	0.2995	0.8 (0.64-0.99)	0.0406
Hidradenitis suppurativa	0.6 (0.32-1.12)	0.1062	1.02 (0.53-1.95)	0.961	NA	NA	NA	NA	0.81 (0.21-3.06)	0.7548

Abbreviations: aOR, adjusted odds ratio; CI, confidence interval; NA, not applicable; PPP, palmoplantar pustulosis; SD, standard deviation.

<sup>a</sup>Propensity score matching by age, sex, region of residence, income, and insurance type.

<sup>b</sup>Adjusted by BMI, smoking history, and alcohol consumption.



**eTable 11.** Sensitivity Analysis of Patients With 1 or More Documented Dermatologist Visit During Study Period With a Diagnosis of PPP, Psoriasis Vulgaris, or Pompholyx

Comorbidities	PPP vs Pompholyx				PPP vs Psoriasis vulgaris			
	Univariable analysis		Multivariable analysis <sup>a</sup>		Univariable analysis		Multivariable analysis <sup>a</sup>	
	Crude OR (95% CI)	p value	Adjusted OR (95% CI)	p value	Crude OR (95% CI)	p value	Adjusted OR (95% CI)	p value
Psoriasis	106.78 (101.7-112.1)	<0.0001	86.24 (81.61-91.14)	<0.0001	NA	NA	NA	NA
Psoriatic arthritis	8.72 (7.61-10)	<0.0001	5.32 (4.56-6.21)	<0.0001	0.67 (0.6-0.75)	<0.0001	0.66 (0.58-0.76)	<0.0001
Ankylosing spondylitis	1.8 (1.6-2.03)	<0.0001	1.48 (1.3-1.69)	<0.0001	0.99 (0.88-1.11)	0.8055	1.07 (0.94-1.22)	0.3276
Rheumatoid arthritis	1.45 (1.39-1.52)	<0.0001	1.02 (0.98-1.07)	0.3538	0.99 (0.94-1.03)	0.4834	0.96 (0.92-1.01)	0.115
Enteropathic arthritis	2.15 (0.76-6.07)	0.1469	1.72 (0.52-5.72)	0.3782	1.1 (0.39-3.1)	0.8542	1.03 (0.31-3.4)	0.9639
Juvenile arthritis	0.85 (0.52-1.41)	0.5284	0.96 (0.51-1.83)	0.9105	0.94 (0.56-1.57)	0.8151	1.25 (0.65-2.42)	0.5058
Type2 diabetes mellitus	2.07 (2.02-2.11)	<0.0001	1.22 (1.19-1.25)	<0.0001	0.99 (0.97-1.01)	0.1955	1.07 (1.04-1.1)	<0.0001
Hyperlipidemia	1.66 (1.64-1.69)	<0.0001	1 (0.98-1.02)	0.9766	1.05 (1.03-1.06)	<0.0001	1.07 (1.05-1.09)	<0.0001
Hypertension	1.93 (1.89-1.96)	<0.0001	1.07 (1.04-1.09)	<0.0001	0.94 (0.92-0.95)	<0.0001	0.98 (0.96-1)	0.0428
Heart failure	2.22 (2.1-2.36)	<0.0001	1.17 (1.09-1.25)	<0.0001	0.86 (0.81-0.91)	<0.0001	0.97 (0.9-1.03)	0.3045
Coronary heart disease	1.96 (1.9-2.02)	<0.0001	1.05 (1.02-1.09)	0.0053	0.94 (0.91-0.97)	<0.0001	1.05 (1.01-1.08)	0.0103
Myocardial infarction	2.32 (2.14-2.52)	<0.0001	1.18 (1.07-1.3)	0.0007	0.91 (0.84-0.99)	0.0211	1.04 (0.95-1.15)	0.3629
Cerebrovascular disease	1.98 (1.93-2.04)	<0.0001	1.07 (1.03-1.1)	0.0004	0.9 (0.87-0.93)	<0.0001	1.02 (0.98-1.05)	0.3091
Type1 diabetes mellitus	2.1 (1.94-2.28)	<0.0001	1.27 (1.16-1.4)	<0.0001	0.82 (0.76-0.89)	<0.0001	0.93 (0.85-1.02)	0.129
Graves disease	1.19 (1.1-1.29)	<0.0001	1.13 (1.03-1.23)	0.0067	1.34 (1.24-1.46)	<0.0001	1.24 (1.14-1.36)	<0.0001
Hashimoto thyroiditis	0.9 (0.82-0.98)	0.0172	0.83 (0.75-0.92)	0.0002	1.07 (0.98-1.18)	0.1441	0.92 (0.83-1.02)	0.1211
Crohn disease	1.24 (0.98-1.57)	0.0766	1.22 (0.9-1.65)	0.2017	0.89 (0.7-1.13)	0.3458	0.88 (0.65-1.19)	0.4101
Ulcerative colitis	1.18 (1.01-1.37)	0.0388	1.01 (0.85-1.2)	0.9271	0.9 (0.77-1.05)	0.1884	0.91 (0.76-1.08)	0.2574
Behcet's disease	1.4 (1.16-1.7)	0.0006	1.12 (0.9-1.39)	0.312	1.1 (0.9-1.34)	0.3417	1 (0.8-1.25)	0.9845
Systemic lupus erythematosus	1.14 (0.92-1.4)	0.2226	1.19 (0.94-1.51)	0.1603	0.77 (0.63-0.95)	0.0161	0.75 (0.59-0.96)	0.0209
Sjogren's syndrome	1.11 (0.92-1.34)	0.2616	0.85 (0.7-1.04)	0.121	0.88 (0.73-1.06)	0.1869	0.81 (0.66-0.99)	0.0425
Systemic sclerosis	1.3 (0.81-2.1)	0.2784	0.99 (0.6-1.65)	0.9754	0.51 (0.32-0.83)	0.0058	0.54 (0.33-0.9)	0.0181
Dermatopolymyositis	1.65 (1.12-2.43)	0.0109	1.35 (0.86-2.12)	0.1902	0.83 (0.56-1.21)	0.3304	0.76 (0.49-1.19)	0.2313
Vitiligo	2.11 (1.95-2.28)	<0.0001	1.89 (1.73-2.07)	<0.0001	0.63 (0.58-0.68)	<0.0001	0.62 (0.56-0.67)	<0.0001
Alopecia areata	1.01 (0.96-1.06)	0.6827	1.01 (0.95-1.07)	0.8595	0.77 (0.73-0.81)	<0.0001	0.81 (0.77-0.86)	<0.0001
Hidradenitis suppurativa	0.83 (0.63-1.08)	0.1645	0.78 (0.58-1.05)	0.1023	0.72 (0.54-0.94)	0.0164	0.72 (0.53-0.98)	0.0354

Abbreviations: CI, confidence interval; NA, not applicable; OR, odds ratio; PPP, palmoplantar pustulosis.

<sup>a</sup>Adjusted by age, sex, region of residence, income, and insurance type.

**eTable 12.** Sensitivity Analysis of Patients With 2 or More Documented Dermatologist Visits During Study Period With a Diagnosis of PPP, Psoriasis Vulgaris, or Pompholyx

Comorbidities	PPP vs Pompholyx				PPP vs Psoriasis vulgaris			
	Univariable analysis		Multivariable analysis <sup>a</sup>		Univariable analysis		Multivariable analysis <sup>a</sup>	
	Crude OR (95% CI)	p value	Adjusted OR (95% CI)	p value	Crude OR (95% CI)	p value	Adjusted OR (95% CI)	p value
Psoriasis	95.63 (90.41-101.16)	<0.0001	81.46 (76.47-86.78)	<0.0001	NA	NA	NA	NA
Psoriatic arthritis	10.21 (8.68-12.01)	<0.0001	6.95 (5.8-8.33)	<0.0001	0.58 (0.51-0.66)	<0.0001	0.58 (0.5-0.66)	<0.0001
Ankylosing spondylitis	2.1 (1.83-2.42)	<0.0001	1.69 (1.44-1.98)	<0.0001	1.12 (0.98-1.28)	0.1111	1.2 (1.03-1.4)	0.0213
Rheumatoid arthritis	1.38 (1.31-1.46)	<0.0001	1.01 (0.95-1.07)	0.7044	1.05 (0.99-1.1)	0.1066	0.97 (0.92-1.03)	0.3703
Enteropathic arthritis	2.53 (0.73-8.73)	0.1427	1.56 (0.35-7.02)	0.5606	1.04 (0.31-3.42)	0.9551	0.72 (0.17-3.08)	0.6611
Juvenile arthritis	0.71 (0.35-1.45)	0.3507	0.93 (0.37-2.32)	0.8707	0.8 (0.39-1.64)	0.5386	0.97 (0.39-2.46)	0.9544
Type2 diabetes mellitus	2.04 (1.99-2.1)	<0.0001	1.28 (1.25-1.32)	<0.0001	1.04 (1.02-1.07)	0.0012	1.08 (1.05-1.11)	<0.0001
Hyperlipidemia	1.63 (1.59-1.66)	<0.0001	1.02 (1-1.05)	0.085	1.12 (1.1-1.14)	<0.0001	1.08 (1.06-1.11)	<0.0001
Hypertension	1.88 (1.84-1.92)	<0.0001	1.09 (1.06-1.12)	<0.0001	1 (0.98-1.02)	0.9243	0.98 (0.95-1)	0.1007
Heart failure	2.08 (1.93-2.23)	<0.0001	1.19 (1.09-1.29)	<0.0001	0.9 (0.84-0.96)	0.0025	0.97 (0.9-1.05)	0.472
Coronary heart disease	1.84 (1.77-1.91)	<0.0001	1.09 (1.04-1.14)	0.0002	1 (0.96-1.04)	1	1.1 (1.05-1.15)	<0.0001
Myocardial infarction	2.09 (1.89-2.32)	<0.0001	1.18 (1.05-1.33)	0.0053	0.91 (0.82-1.01)	0.0628	1.05 (0.93-1.17)	0.4311
Cerebrovascular disease	1.84 (1.78-1.91)	<0.0001	1.07 (1.02-1.11)	0.0036	0.96 (0.93-1)	0.0354	1.04 (1-1.09)	0.0674
Type1 diabetes mellitus	1.99 (1.79-2.21)	<0.0001	1.29 (1.15-1.45)	<0.0001	0.82 (0.74-0.9)	<0.0001	0.91 (0.81-1.01)	0.0873
Graves disease	1.29 (1.17-1.42)	<0.0001	1.23 (1.1-1.37)	0.0003	1.53 (1.39-1.69)	<0.0001	1.36 (1.21-1.52)	<0.0001
Hashimoto thyroiditis	0.87 (0.78-0.98)	0.0183	0.85 (0.75-0.96)	0.0099	1.13 (1-1.27)	0.0456	0.95 (0.83-1.08)	0.4224
Crohn disease	1.28 (0.95-1.73)	0.1002	1.29 (0.9-1.86)	0.172	0.9 (0.67-1.21)	0.4964	0.99 (0.69-1.43)	0.9651
Ulcerative colitis	1.09 (0.89-1.32)	0.4121	0.95 (0.76-1.18)	0.6388	0.86 (0.71-1.05)	0.1447	0.87 (0.7-1.09)	0.2189
Behcet's disease	1.37 (1.08-1.76)	0.011	1.09 (0.83-1.45)	0.534	1.19 (0.93-1.53)	0.1684	1.03 (0.78-1.37)	0.8356
Systemic lupus erythematosus	1.01 (0.76-1.34)	0.9713	1.04 (0.75-1.44)	0.8307	0.69 (0.52-0.92)	0.0112	0.64 (0.46-0.89)	0.0074
Sjogren's syndrome	0.82 (0.63-1.06)	0.1284	0.67 (0.51-0.88)	0.0045	0.78 (0.61-1.02)	0.0662	0.69 (0.52-0.91)	0.0092
Systemic sclerosis	0.94 (0.48-1.85)	0.8572	0.72 (0.35-1.48)	0.3696	0.39 (0.2-0.75)	0.0052	0.39 (0.19-0.79)	0.0092
Dermatopolymyositis	1.46 (0.91-2.35)	0.1159	1.27 (0.75-2.14)	0.3688	0.91 (0.57-1.45)	0.682	0.87 (0.52-1.46)	0.5919
Vitiligo	2.14 (1.95-2.35)	<0.0001	1.95 (1.74-2.17)	<0.0001	0.6 (0.54-0.65)	<0.0001	0.57 (0.52-0.64)	<0.0001
Alopecia areata	1.01 (0.94-1.07)	0.8802	0.99 (0.93-1.07)	0.8562	0.8 (0.75-0.85)	<0.0001	0.84 (0.78-0.9)	<0.0001
Hidradenitis suppurativa	0.85 (0.61-1.18)	0.326	0.81 (0.56-1.17)	0.2709	0.77 (0.55-1.07)	0.1238	0.75 (0.52-1.09)	0.1267

Abbreviations: CI, confidence interval; NA, not applicable; OR, odds ratio; PPP, palmoplantar pustulosis.

<sup>a</sup>Adjusted by age, sex, region of residence, income, and insurance type.

**eTable 13.** Sensitivity Analysis of Patients With 4 or More Documented Dermatologist Visits During Study Period With a Diagnosis of PPP, Psoriasis Vulgaris, or Pompholyx

Comorbidities	PPP vs Pompholyx				PPP vs Psoriasis vulgaris			
	Univariable analysis		Multivariable analysis <sup>a</sup>		Univariable analysis		Multivariable analysis <sup>a</sup>	
	Crude OR (95% CI)	p value	Adjusted OR (95% CI)	p value	Crude OR (95% CI)	p value	Adjusted OR (95% CI)	p value
Psoriasis	30.72 (29.34-32.16)	<0.0001	27.98 (26.56-29.47)	<0.0001	NA	NA	NA	NA
Psoriatic arthritis	11.42 (9.28-14.06)	<0.0001	8.79 (6.99-11.06)	<0.0001	0.53 (0.46-0.6)	<0.0001	0.53 (0.46-0.62)	<0.0001
Ankylosing spondylitis	2.48 (2.1-2.94)	<0.0001	2.05 (1.69-2.49)	<0.0001	1.29 (1.1-1.51)	0.0017	1.38 (1.15-1.65)	0.0005
Rheumatoid arthritis	1.34 (1.25-1.43)	<0.0001	1.01 (0.94-1.09)	0.7266	1.07 (1-1.15)	0.0415	0.96 (0.89-1.04)	0.3027
Enteropathic arthritis	3.59 (1.11-11.66)	0.0334	2.32 (0.6-8.87)	0.2208	1.71 (0.59-4.99)	0.324	1.33 (0.39-4.53)	0.6466
Juvenile arthritis	0.69 (0.25-1.91)	0.4717	0.82 (0.19-3.51)	0.7835	0.67 (0.24-1.84)	0.4328	0.76 (0.18-3.24)	0.7106
Type2 diabetes mellitus	2.05 (1.98-2.11)	<0.0001	1.37 (1.32-1.42)	<0.0001	1.11 (1.08-1.15)	<0.0001	1.1 (1.06-1.14)	<0.0001
Hyperlipidemia	1.65 (1.6-1.69)	<0.0001	1.08 (1.04-1.11)	<0.0001	1.22 (1.19-1.26)	<0.0001	1.12 (1.09-1.15)	<0.0001
Hypertension	1.84 (1.79-1.89)	<0.0001	1.12 (1.08-1.15)	<0.0001	1.07 (1.05-1.1)	<0.0001	0.98 (0.95-1.01)	0.2055
Heart failure	1.98 (1.81-2.18)	<0.0001	1.17 (1.05-1.3)	0.0044	0.95 (0.87-1.03)	0.2058	0.95 (0.86-1.05)	0.2861
Coronary heart disease	1.79 (1.7-1.87)	<0.0001	1.13 (1.07-1.19)	<0.0001	1.08 (1.03-1.14)	0.0008	1.14 (1.08-1.2)	<0.0001
Myocardial infarction	2 (1.76-2.26)	<0.0001	1.17 (1.01-1.35)	0.0366	1.02 (0.9-1.14)	0.808	1.1 (0.96-1.26)	0.1797
Cerebrovascular disease	1.77 (1.69-1.86)	<0.0001	1.1 (1.05-1.17)	0.0004	1.03 (0.99-1.08)	0.1548	1.06 (1.01-1.12)	0.0233
Type1 diabetes mellitus	1.91 (1.67-2.19)	<0.0001	1.33 (1.15-1.55)	0.0002	0.83 (0.73-0.94)	0.0039	0.91 (0.79-1.04)	0.1636
Graves disease	1.39 (1.24-1.57)	<0.0001	1.35 (1.18-1.55)	<0.0001	1.74 (1.54-1.96)	<0.0001	1.51 (1.32-1.73)	<0.0001
Hashimoto thyroiditis	0.95 (0.82-1.1)	0.4847	1.01 (0.86-1.17)	0.9409	1.31 (1.14-1.52)	0.0003	1.13 (0.96-1.32)	0.1339
Crohn disease	1.34 (0.93-1.94)	0.119	1.29 (0.81-2.05)	0.2876	1.06 (0.74-1.53)	0.7381	1.12 (0.71-1.76)	0.6332
Ulcerative colitis	1.11 (0.86-1.42)	0.4238	1.01 (0.77-1.33)	0.9383	0.92 (0.72-1.18)	0.5194	0.92 (0.71-1.21)	0.5577
Behcet's disease	1.67 (1.24-2.24)	0.0007	1.37 (0.99-1.91)	0.0615	1.51 (1.13-2.03)	0.0053	1.35 (0.98-1.87)	0.0684
Systemic lupus erythematosus	0.98 (0.67-1.45)	0.9357	1.09 (0.7-1.7)	0.693	0.73 (0.5-1.06)	0.101	0.67 (0.44-1.03)	0.0665
Sjogren's syndrome	0.91 (0.66-1.26)	0.5822	0.69 (0.49-0.98)	0.0403	0.91 (0.66-1.25)	0.5698	0.76 (0.54-1.08)	0.1206
Systemic sclerosis	0.66 (0.24-1.83)	0.4231	0.56 (0.2-1.56)	0.2672	0.34 (0.13-0.92)	0.0338	0.38 (0.14-1.04)	0.0605
Dermatopolymyositis	1.43 (0.77-2.63)	0.2576	1.18 (0.6-2.32)	0.6329	1.06 (0.58-1.92)	0.854	0.95 (0.49-1.84)	0.8832
Vitiligo	2.17 (1.93-2.44)	<0.0001	1.92 (1.67-2.2)	<0.0001	0.57 (0.51-0.63)	<0.0001	0.53 (0.47-0.6)	<0.0001
Alopecia areata	0.99 (0.91-1.07)	0.7249	0.99 (0.91-1.08)	0.8405	0.86 (0.79-0.93)	<0.0001	0.91 (0.84-1)	0.0449
Hidradenitis suppurativa	0.99 (0.67-1.45)	0.9526	1.03 (0.68-1.56)	0.8911	0.97 (0.66-1.42)	0.8746	1.02 (0.68-1.53)	0.928

Abbreviations: CI, confidence interval; NA, not applicable; OR, odds ratio; PPP, palmoplantar pustulosis.

<sup>a</sup>Adjusted by age, sex, region of residence, income, and insurance type.

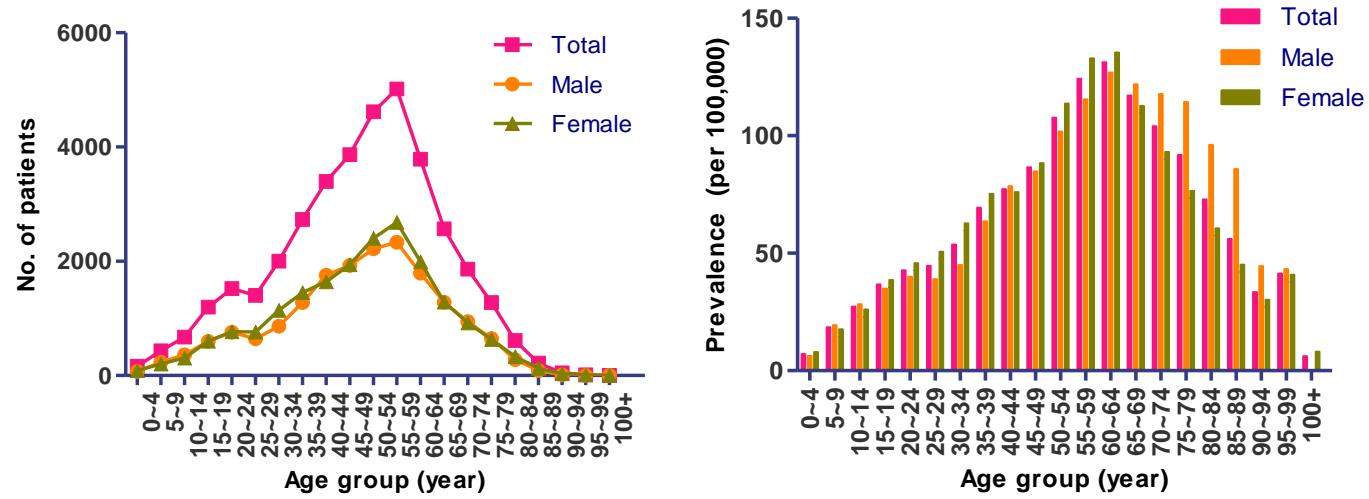
**eTable 14.** Sensitivity Analysis of Patients With 5 or More Documented Dermatologist Visits During Study Period With a Diagnosis of PPP, Psoriasis Vulgaris, or Pompholyx

Comorbidities	PPP vs Pompholyx				PPP vs Psoriasis vulgaris			
	Univariable analysis		Multivariable analysis <sup>a</sup>		Univariable analysis		Multivariable analysis <sup>a</sup>	
	Crude OR (95% CI)	p value	Adjusted OR (95% CI)	p value	Crude OR (95% CI)	p value	Adjusted OR (95% CI)	p value
Psoriasis	21.11 (20.2-22.07)	<0.0001	19.14 (18.2-20.13)	<0.0001	NA	NA	NA	NA
Psoriatic arthritis	11.38 (9.08-14.28)	<0.0001	8.73 (6.82-11.18)	<0.0001	0.51 (0.44-0.59)	<0.0001	0.52 (0.44-0.61)	<0.0001
Ankylosing spondylitis	2.44 (2.02-2.94)	<0.0001	2.13 (1.73-2.63)	<0.0001	1.27 (1.07-1.51)	0.0071	1.42 (1.17-1.72)	0.0004
Rheumatoid arthritis	1.33 (1.24-1.44)	<0.0001	1.03 (0.94-1.11)	0.5513	1.08 (1-1.16)	0.0452	0.96 (0.88-1.04)	0.272
Enteropathic arthritis	2.58 (0.68-9.72)	0.162	2.38 (0.6-9.39)	0.2156	1.36 (0.4-4.57)	0.6208	1.33 (0.39-4.53)	0.6465
Juvenile arthritis	0.74 (0.27-2.09)	0.573	1.37 (0.4-4.76)	0.6197	0.79 (0.28-2.19)	0.6457	1.3 (0.38-4.43)	0.671
Type2 diabetes mellitus	2.01 (1.94-2.08)	<0.0001	1.37 (1.31-1.43)	<0.0001	1.13 (1.09-1.17)	<0.0001	1.1 (1.05-1.14)	<0.0001
Hyperlipidemia	1.64 (1.6-1.69)	<0.0001	1.1 (1.06-1.13)	<0.0001	1.25 (1.21-1.28)	<0.0001	1.12 (1.09-1.16)	<0.0001
Hypertension	1.82 (1.76-1.87)	<0.0001	1.12 (1.08-1.16)	<0.0001	1.1 (1.07-1.13)	<0.0001	0.98 (0.95-1.01)	0.2529
Heart failure	2.01 (1.81-2.22)	<0.0001	1.2 (1.07-1.35)	0.0019	0.98 (0.9-1.08)	0.7247	0.96 (0.87-1.08)	0.5117
Coronary heart disease	1.76 (1.67-1.86)	<0.0001	1.13 (1.07-1.2)	<0.0001	1.11 (1.06-1.17)	<0.0001	1.14 (1.08-1.21)	<0.0001
Myocardial infarction	1.98 (1.72-2.27)	<0.0001	1.19 (1.02-1.4)	0.0271	1.04 (0.92-1.18)	0.5344	1.1 (0.95-1.28)	0.1845
Cerebrovascular disease	1.77 (1.68-1.86)	<0.0001	1.11 (1.05-1.18)	0.0006	1.07 (1.02-1.12)	0.007	1.07 (1.01-1.13)	0.0228
Type1 diabetes mellitus	1.76 (1.52-2.05)	<0.0001	1.27 (1.07-1.5)	0.005	0.81 (0.71-0.93)	0.0035	0.88 (0.75-1.02)	0.0966
Graves disease	1.55 (1.36-1.75)	<0.0001	1.52 (1.32-1.75)	<0.0001	1.92 (1.69-2.18)	<0.0001	1.66 (1.44-1.91)	<0.0001
Hashimoto thyroiditis	0.95 (0.81-1.11)	0.5	0.98 (0.83-1.16)	0.7974	1.35 (1.15-1.58)	0.0002	1.12 (0.95-1.32)	0.1921
Crohn disease	1.21 (0.78-1.88)	0.4056	1.26 (0.74-2.16)	0.3983	0.86 (0.56-1.32)	0.5011	0.98 (0.58-1.64)	0.9291
Ulcerative colitis	1.12 (0.85-1.47)	0.4187	1.06 (0.79-1.43)	<0.0001	0.91 (0.7-1.19)	0.4936	0.94 (0.71-1.25)	0.6724
Behcet's disease	1.7 (1.24-2.34)	0.0011	1.42 (1-2.02)	0.052	1.61 (1.18-2.2)	0.0026	1.49 (1.05-2.09)	0.0241
Systemic lupus erythematosus	1.01 (0.65-1.56)	0.9756	1.05 (0.64-1.74)	0.8366	0.73 (0.47-1.11)	0.1385	0.63 (0.39-1.03)	0.0636
Sjogren's syndrome	0.89 (0.63-1.27)	0.52	0.67 (0.45-0.99)	0.0441	0.92 (0.65-1.3)	0.6289	0.72 (0.49-1.06)	0.0976
Systemic sclerosis	0.95 (0.33-2.7)	0.9202	0.77 (0.27-2.23)	0.6311	0.4 (0.15-1.08)	0.0712	0.45 (0.16-1.23)	0.1177
Dermatopolymyositis	1.64 (0.85-3.17)	0.1387	1.5 (0.72-3.13)	0.2819	1.17 (0.63-2.2)	0.6223	1.01 (0.5-2.02)	0.9827
Vitiligo	2.18 (1.92-2.47)	<0.0001	1.94 (1.68-2.24)	<0.0001	0.57 (0.51-0.64)	<0.0001	0.54 (0.47-0.61)	<0.0001
Alopecia areata	0.99 (0.91-1.08)	0.8557	0.98 (0.89-1.08)	0.7433	0.89 (0.82-0.97)	0.0074	0.95 (0.86-1.04)	0.2555
Hidradenitis suppurativa	1.08 (0.71-1.63)	0.7267	1.21 (0.78-1.88)	0.4056	1.04 (0.69-1.56)	0.844	1.13 (0.74-1.73)	0.5789

Abbreviations: CI, confidence interval; NA, not applicable; OR, odds ratio; PPP, palmoplantar pustulosis.

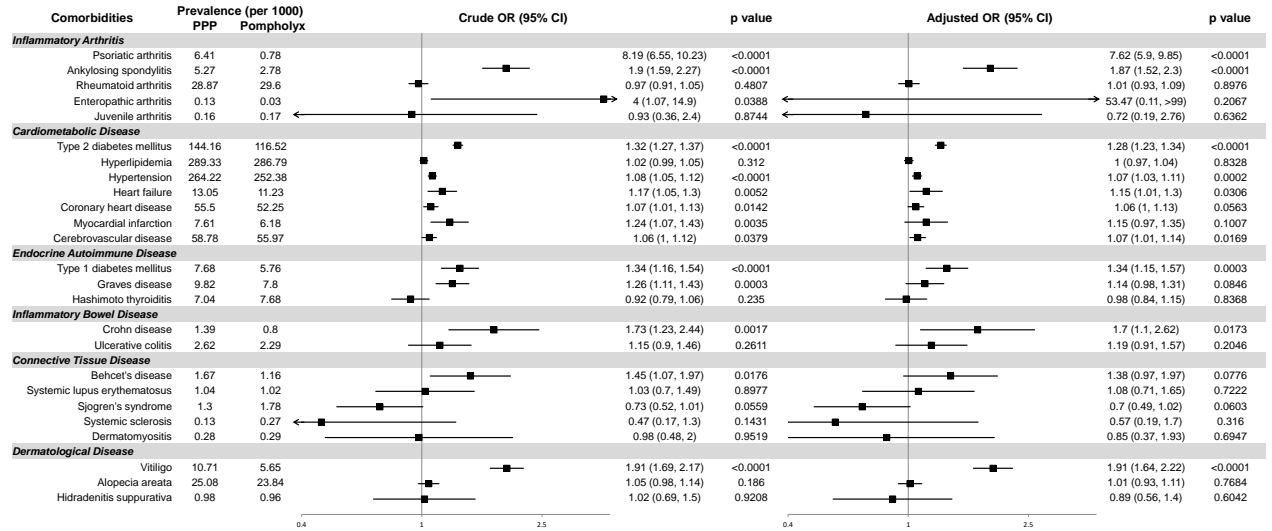
<sup>a</sup>Adjusted by age, sex, region of residence, income, and insurance type.

**eFigure 1.** Distribution and Prevalence of Patients With Palmoplantar Pustulosis by Age and Sex in the Korean Population

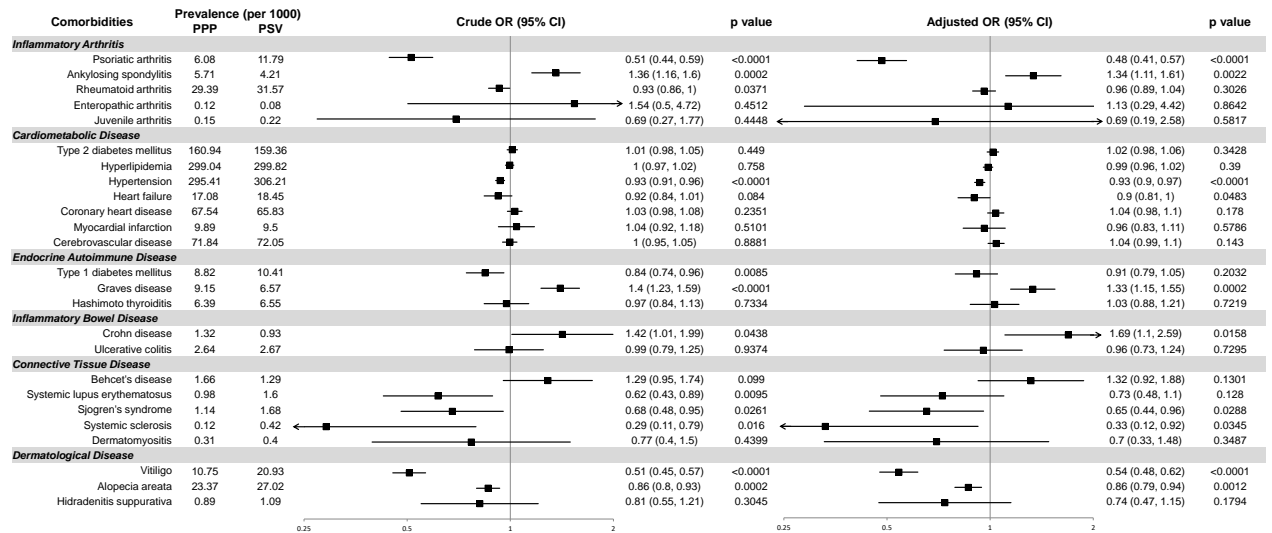


**eFigure 2.** Forest Plots of the Risks of Comorbidities in Patients With Palmoplantar Pustulosis Compared With Propensity Score–Matched Patients With Pompholyx or Psoriasis Vulgaris<sup>a</sup>

PPP group (n=31,659) vs PS-matched pompholyx group (n=158,295)



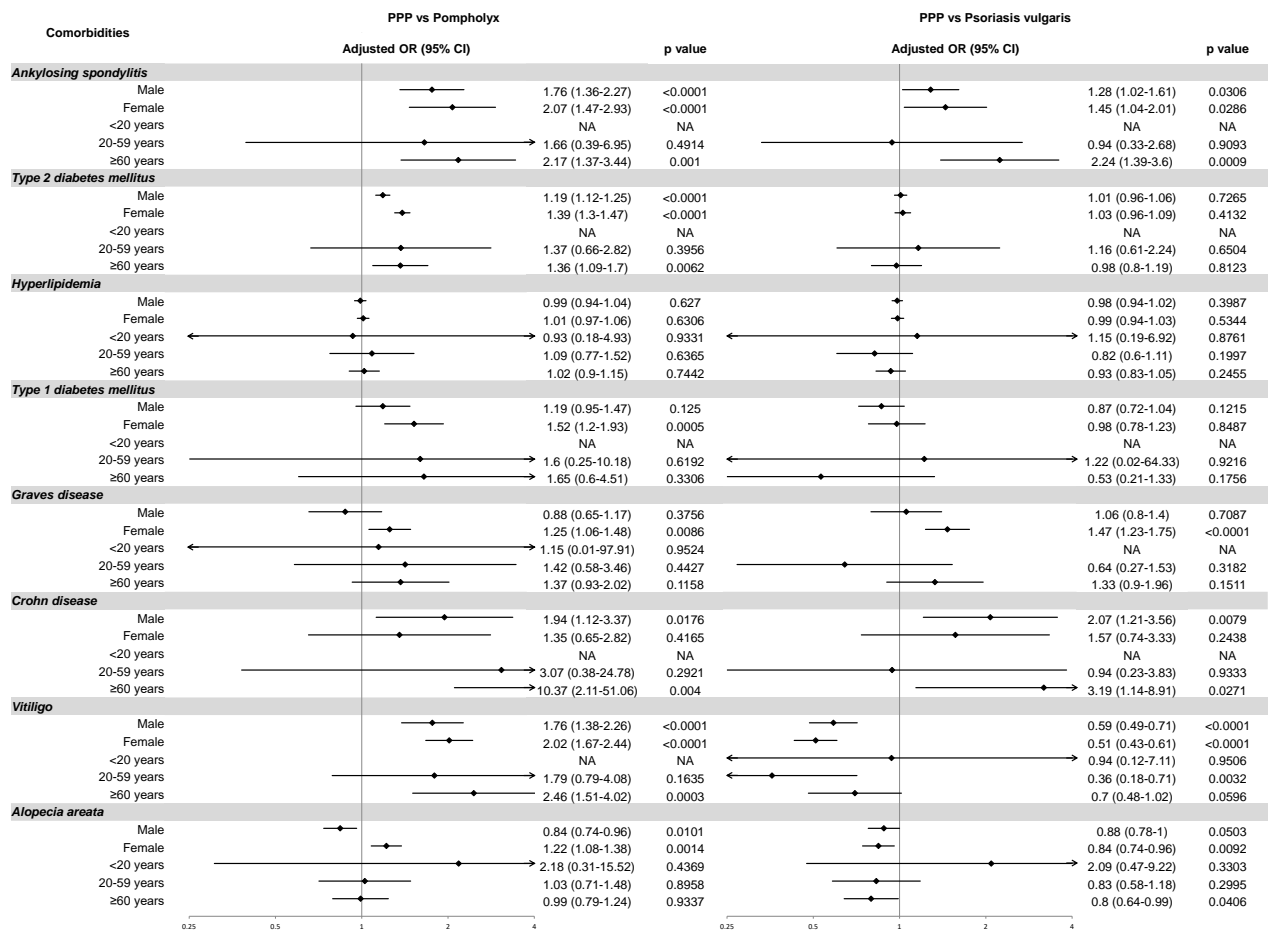
PPP group (n=32,558) vs PS-matched psoriasis vulgaris group (n=162,790)



Abbreviations: CI, confidence interval; OR, odds ratio; PPP, palmoplantar pustulosis; PS, propensity score; PSV, psoriasis vulgaris.

<sup>a</sup>Propensity score matching by age, sex, region of residence, income, and insurance type. Adjusted ORs were adjusted by BMI, smoking history, and alcohol consumption. Outstanding values over the range of plots were omitted.

**eFigure 3. Subgroup Analysis by Sex and Age After Propensity Score Matching<sup>a</sup>**



Abbreviations: CI, confidence interval; OR, odds ratio; PPP, palmoplantar pustulosis; PSV, psoriasis vulgaris.

<sup>a</sup>Propensity score matching by age, sex, region of residence, income, and insurance type. Adjusted ORs were adjusted by BMI, smoking history, and alcohol consumption. Outstanding values over the range of plots were omitted.