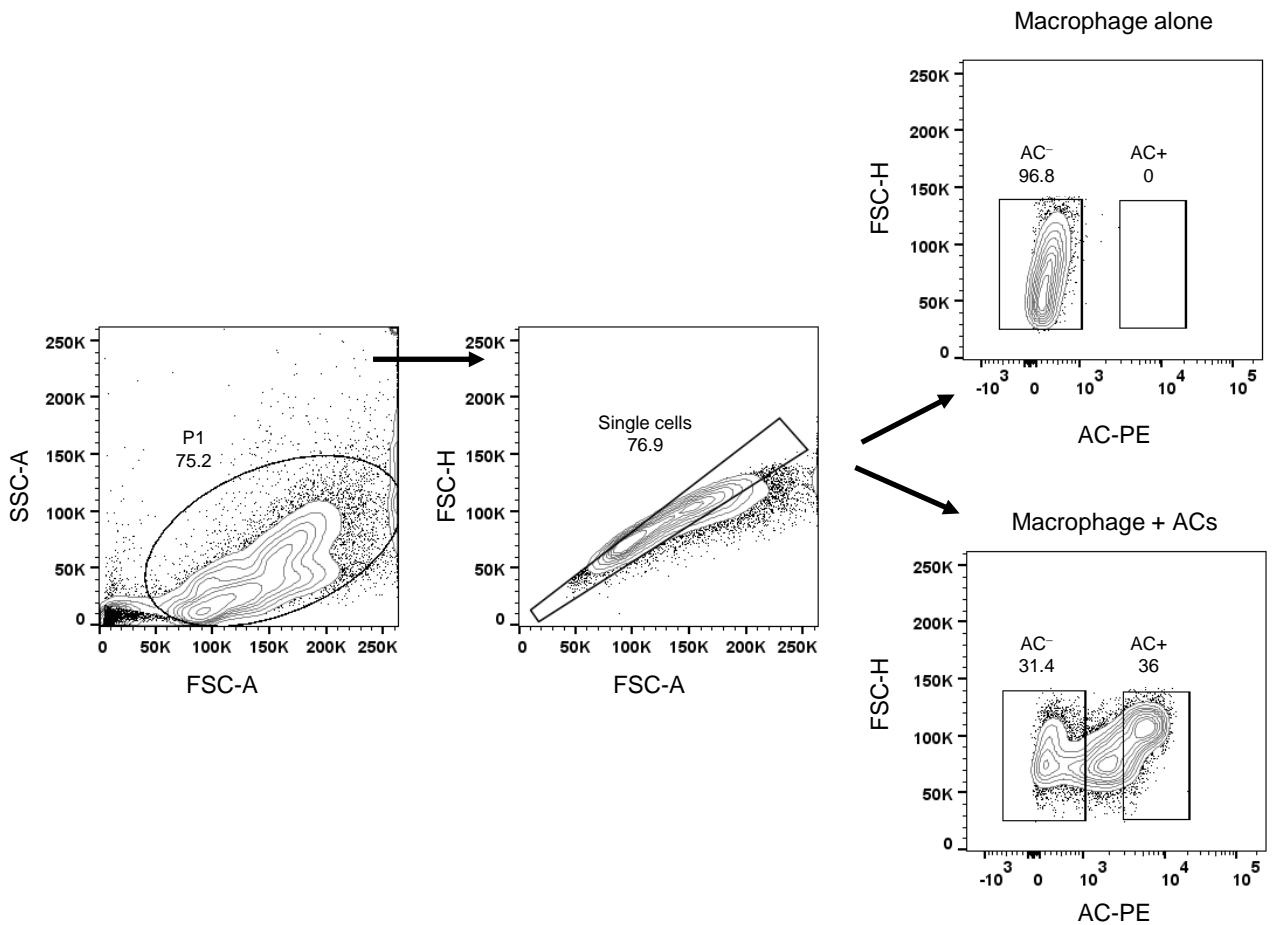


Representative gating strategy for zymosan A1 experiments (from Fig. 6f): FSC-A and SSC-A gate for removal of cell debris. This was followed by FSC-H and FSC-A to select for single cells. Cells were then gated for Ly6G⁺ and F4/80⁺ cells to determine percentage of PMNs and macrophages, respectively. Data shown were analyzed using FlowJo and is representative of experiments for which n=4



Representative gating strategy for all in vitro flow cytometry experiments involving incubation of macrophages with ACs (from Fig. 4g): FSC-A and SSC-A gating was used to remove cell debris. Followed by FSC-H and FSC-A to select for single cells. Cells were the gated for AC^{high} (AC⁺) vs AC^{low} (AC⁻) macrophages. Data shown was analyzed with FlowJo and representative of experiments where n=3 biological replicates.