

Supplemental Online Content

Mortezavi A, Crippa A, Kotopouli MI, Akre O, Wiklund P, Hosseini A. Association of open vs robot-assisted radical cystectomy with mortality and perioperative outcomes among patients with bladder cancer in Sweden. *JAMA Netw Open*. 2022;5(4):e228959. doi:10.1001/jamanetworkopen.2022.8959

eFigure 1. Survival Analysis Before Propensity Score Matching

eTable 1. Univariate Cox Regression Model Before Propensity Score Matching

eFigure 2. Propensity Score Distributions Before and After Propensity Score Matching

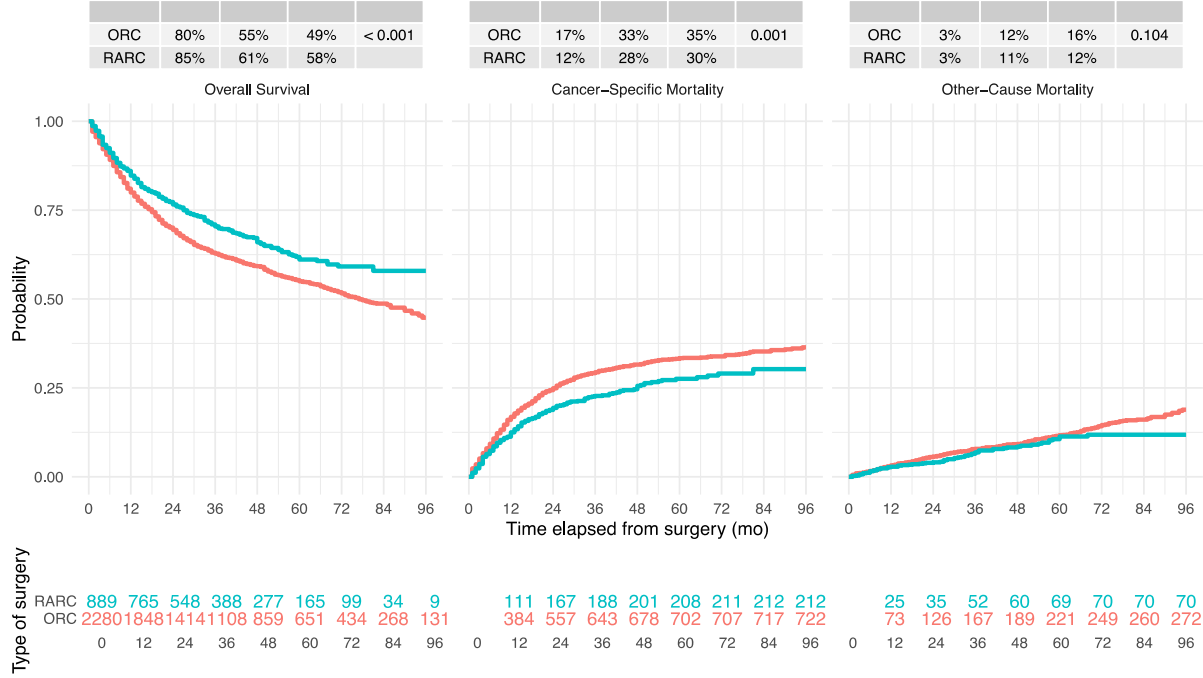
eTable 2. Univariable Cox Regression Analysis and E-Values for Mortality Analysis After Propensity Score Matching

eTable 3. Sensitivity Analysis for Year of Surgery, Baseline Characteristic, Outcomes, Univariable Cox Regression Analysis for All-Cause Mortality

eFigure 3. Sensitivity Survival Analysis for Year of Surgery

This supplemental material has been provided by the authors to give readers additional information about their work.

eFigure 1. Survival Analysis Before Propensity Score Matching



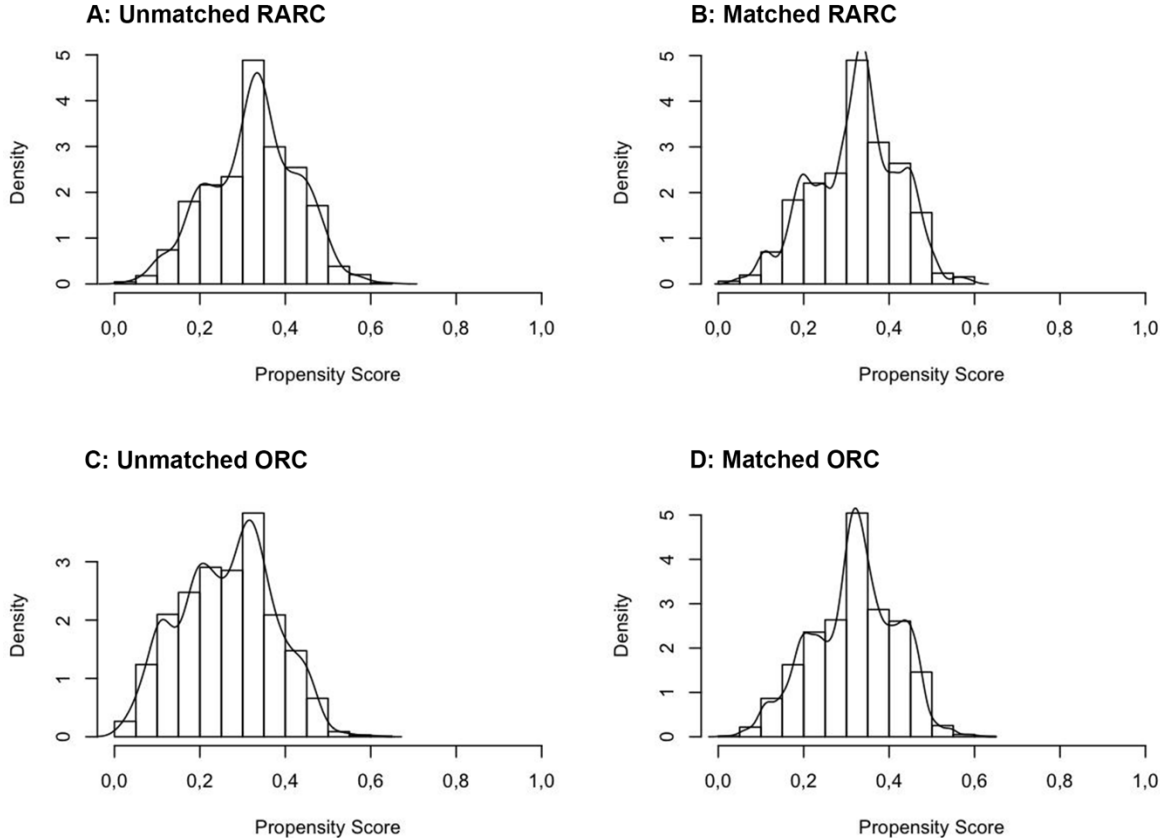
Cumulative incidence functions illustrating cancer-specific (CSM), other-cause mortality (OCM), and overall survival (OS, 1 – all-cause mortality) for patients undergoing open radical cystectomy (ORC) and robot-assisted radical cystectomy (RARC). Tables include the number of events for CSM and OCM, numbers at risk for OS, and estimates for 1, 5 and 7 years. P-value using the Gray’s and log-rank tests.

eTable 1. Univariate Cox Regression Model Before Propensity Score Matching

	Characteristics	All-cause mortality		
		HR	95% CI	p*
Female gender	female vs. male	1.05	0.93-1.19	0.43
Age	years, continuous (interval 5)	1.17	1.13-1.21	<0.001
BMI	kg/m ² , continuous (interval 5)	0.84	0.79-0.90	<0.001
ASA score	III/IV vs. I/II	1.62	1.44-1.81	<0.001
Prior surgery / RTx	yes vs. no	1.12	0.98-1.28	0.12
Clinical T stage	cT2 vs. Ta/T1/Tis	1.77	1.52-2.05	<0.001
	cT3 vs. Ta/T1/Tis	2.41	2.00-2.90	<0.001
	cT4 vs. Ta/T1/Tis	3.15	2.50-3.97	<0.001
Clinical N stage	cN+ vs. cN-	1.76	1.49-2.08	<0.001
NAC	yes vs. no	0.77	0.68-0.87	<0.001
Annual hospital volume	11-25 vs. 1-10	0.82	0.68-0.99	0.04
	>25 vs. 1-10	0.79	0.67-0.93	0.006
Pathological stage	pT2 vs. pT0/pTa/T1/Tis	1.99	1.66-2.38	<0.001
	pT3 vs. pT0/pTa/T1/Tis	4.13	3.56-4.79	<0.001
	pT4 vs. pT0/pTa/T1/Tis	7.6	6.43-8.98	<0.001

BMI: body mass index, ASA: American Society of Anesthesiologists, RTx: radio therapy, NAC: neoadjuvant chemotherapy, HR: hazard ratio, CI: confidence interval. * Bold face representing P < 0.05.

eFigure 2. Propensity Score Distributions Before and After Propensity Score Matching



The propensity score distributions for the groups both before and after matching; Figure 1A and C demonstrate an initial dissimilarity on the basis of propensity score distributions. After matching, the distributions of the propensity scores (Figure 1 B and D) were homogeneous and confirmed the adequacy of the propensity score model to achieve balance. RARC: robot-assisted radical cystectomy, ORC: open radical cystectomy

eTable 2. Univariable Cox Regression Analysis and E-Values for Mortality Analysis After Propensity Score Matching

eTable 2 (A). Univariable Cox regression analysis for all-cause, cancer-specific, and other-cause mortality (after matching)													
Variable	Characteristics	Before PSM			After PSM								
		All-cause mortality			All-cause mortality			Cancer-specific mortality			Other-cause mortality		
		HR	95% CI	p*	HR	95% CI	p*	HR	95% CI	p*	HR	95% CI	p*
Estimated blood loss	continuous, ml (per 250)	1.0 4	1.02- 1.05	<0.001	1.0 3	1.01- 1.04	0.001	1.0 2	1.00-1.04	0.015	1.0 3	1.01- 1.06	0.012
Blood transfusion	yes vs. no	1.6 3	1.44- 1.85	<0.001	1.6 9	1.45- 1.97	<0.001	1.7 1	1.42-2.05	<0.001	1.6 4	1.25- 2.16	<0.001
No. of removed LN*	continuous (interval 5)	0.9 2	0.90- 0.95	<0.001	0.9 0	0.86- 0.94	<0.001	0.9 1	0.86-0.95	<0.001	0.8 8	0.82- 0.95	<0.001
Nodal status	N+ vs. N-	3.1 1	2.77- 3.50	<0.001	3.2 8	2.85- 3.78	<0.001	3.9 7	3.39-4.66	<0.001	1.7 9	1.33- 2.42	<0.001
Complications	CD I-II vs. none	1.0 0	0.87- 1.14	0.97	1.0 3	0.88- 1.22	0.69	1.0 9	0.90-1.31	0.383	0.8 9	0.65- 1.22	0.460
	CD III vs. none	1.2 1	1.04- 1.41	0.013	1.2 6	1.04- 1.51	0.016	1.2 0	0.96-1.50	0.105	1.3 9	1.01- 1.91	0.041
	CD IV vs. none	1.8 8	1.43- 2.47	<0.001	1.7 1	1.18- 2.50	0.005	1.2 8	0.78-2.12	0.329	2.7 6	1.54- 4.95	0.001
Type of surgery	RARC vs. ORC	0.8 1	0.70- 0.93	0.003	0.7 1	0.56- 0.89	0.004	0.7 7	0.58-1.01	0.057	0.5 7	0.37- 0.89	0.013

PSM: propensity score matching, LN: lymph nodes, CD: Clavien-Dindo, RARC: robot-assisted radical cystectomy, ORC: open radical cystectomy, HR: hazard ratio, CI: confidence interval. Bold face representing P < 0.05. * in patients undergoing pelvic lymph node dissection

eTable 2 (B). E-Values for all-cause, cancer-specific, and other-cause mortality (in the matched cohort)							
Variable	Characteristics	All-cause mortality		Cancer-specific mortality		Other-cause mortality	
		E-value	95% CI	E-value	95% CI	E-value	95% CI
Estimated blood loss	continuous, ml (per 250)	1.21	1.11-NA	1.16	1.00-NA	1.21	1.11-NA
Blood transfusion	yes vs. no	2.77	2.26-NA	2.81	2.19-NA	2.66	1.81-NA
No. of removed LN*	continuous (interval 5)	1.46	NA-1.32	1.43	NA-1.29	1.53	NA-1.29
Nodal status	N+ vs. N-	6.01	5.15-NA	7.40	6.24-NA	2.98	1.99-NA
Complications	CD I-II vs. none	1.21	1.00-NA	1.40	1.00-NA	1.50	NA-1.00
	CD III vs. none	1.83	1.24-NA	1.69	1.00-NA	2.13	1.11-NA
	CD IV vs. none	2.81	1.64-NA	1.88	1.00-NA	4.96	2.45-NA
Type of surgery	RARC vs. ORC	2.17	NA-1.50	1.92	NA-1.00	2.90	NA-1.50

*LN: lymph nodes, CD: Clavien-Dindo, RARC: robot-assisted radical cystectomy, ORC: open radical cystectomy, CI: confidence interval. * in patients undergoing pelvic lymph node dissection. NA: not applicable*

eTable 3. Sensitivity Analysis for Year of Surgery, Baseline Characteristic, Outcomes, Univariable Cox Regression Analysis for All-Cause Mortality

eTable 3 (A): Sensitivity analysis for year of surgery, baseline characteristics						
	Before propensity matching			After propensity matching		
	ORC (n=2280)	RARC (n=889)	SMD*	ORC (n=1457)	RARC (n=879)	SMD*
Female gender, n (%)	567 (24.9)	216 (24.3)	-0.01	339 (23.3)	213 (24.2)	-0.02
Age (y)	71 (66, 76)	71 (65, 76)	-0.07	71 (65, 76)	71 (65, 76)	-0.01
BMI (kg/m ²)	26 (23, 28)	26 (23, 28)	0.21	26 (23, 28)	26 (23, 28)	-0.01
Missing	27 (1.2)	1 (0.1)		4 (0.3)	1 (0.1)	
ASA score, n (%)						
I	271 (12.0)	101 (11.5)	-0.02	170 (11.8)	100 (11.5)	-0.02
II	1327 (58.9)	433 (49.1)	-0.19	778 (53.8)	433 (49.7)	-0.01
III	635 (28.2)	332 (37.6)	0.2	479 (33.1)	326 (37.4)	0.02
IV	20 (0.9)	16 (1.8)	0.07	18 (1.2)	13 (1.5)	0.001
Missing	27 (1.2)	7 (0.8)		12 (0.8)	7 (0.8)	
Prior surgery / RTx, n (%)	429 (19.3)	157 (17.8)	-0.03	278 (19.3)	154 (17.6)	-0.01
Missing	56 (2.5)	6 (0.7)		13 (0.9)	6 (0.7)	
Clinical T stage, n (%)						
Tis/Ta/T1	591 (25.9)	244 (27.4)	0.03	413 (28.3)	241 (27.4)	-0.02
T2	1185 (52.0)	512 (57.6)	0.11	788 (54.1)	505 (57.5)	0.03
T3	336 (14.7)	86 (9.7)	-0.17	166 (11.4)	86 (9.8)	-0.01
T4	135 (5.9)	40 (4.5)	-0.07	76 (5.2)	40 (4.6)	-0.01
cTx	33 (1.4)	7 (0.8)		14 (1.0)	7 (0.8)	
Clinical N stage, n (%)						
cN+	226 (9.9)	62 (7.0)	-0.12	121 (8.3)	62 (7.1)	-0.02
NAC, n (%)	745 (32.9)	303 (34.2)	0.03	493 (33.9)	300 (34.2)	-0.02
Missing	17 (0.7)	3 (0.3)		4 (0.3)	3 (0.3)	
Annual hospital vol., n (%)						
1 - 10	287 (12.6)	35 (3.9)	-0.45	58 (4.0)	35 (4.0)	-0.01
11 - 25	564 (24.7)	144 (16.2)	-0.23	286 (19.6)	144 (16.4)	-0.01
>25	1429 (62.7)	710 (79.9)	0.43	1113 (76.4)	700 (79.6)	-0.007
Year of surgery						
2011-2013	865 (37.9)	173 (19.5)	-0.47	360 (24.7)	173 (19.7)	-0.01
2014-2015	597 (26.2)	255 (28.7)	0.06	422 (29.0)	251 (28.6)	0.02
2016-2018	818 (35.9)	461 (51.9)	0.32	675 (46.3)	455 (51.8)	-0.003

Data presented as median (quartile 1, quartile 3) or frequency (percentage). ORC: open radical cystectomy, RARC: robot-assisted radical cystectomy, SMD: standardized mean difference, y: year, BMI: body mass index, ASA: American Society of Anesthesiologists, RTx: radio therapy, NAC: neoadjuvant chemotherapy, vol.: volume.

eTable 3 (B): Sensitivity analysis for year of surgery, outcome parameters				SMD	
	ORC (n=1457)	RARC (n=879)	p	before PSM*	after PSM*
INTRAOPERATIVE PARAMETERS					
Urethrectomy, n (%)	290 (20.0)	170 (19.5)	0.8		
Missing	7 (0.5)	5 (0.6)			
Deviation type, n (%)					
Ileum conduit	1299 (89.2)	694 (79.0)	<0.001		
OBS	103 (7.1)	180 (20.5)			
CCUD	20 (1.4)	1 (0.1)			
Other	34 (2.3)	4 (0.5)			
Missing	1 (0.1)	0 (0.0)			
Estimated blood loss (ml)	700 (400, 1200)	150 (100, 300)	<0.001		
Missing	21 (1.4)	22 (2.5)			
Intra-OP blood transfusion, n (%)	512 (37.2)	63 (7.7)	<0.001		
Missing	82 (5.6)	59 (6.7)			
Peri-OP blood transfusion**, n (%)	478 (50.7)	144 (20.7)	<0.001		
Missing	155 (14.1)	12 (1.7)			
Operation time (min)	320 (244, 420)	320 (260, 380)	0.5		
Missing	24 (1.6)	29 (3.3)			
POSTOPERATIVE PARAMETERS					
Clavien-Dindo classification, n (%)					
I-II	374 (26.4)	283 (32.7)	0.001		
III	264 (18.6)	123 (14.2)			
IV	50 (3.5)	19 (2.2)			
V	21 (1.5)	7 (0.8)			
Missing	41 (2.8)	14 (1.6)			
Re-operation, n (%)	177 (12.4)	82 (9.4)	0.03		
Missing	33 (2.3)	11 (1.3)			
Lengths of stay (days)	13 (10, 17)	9 (6, 13)	<0.001		
Missing	37 (2.5)	10 (1.1)			
Re-hospitalization in 90d, n (%)	377 (26.8)	291 (33.8)	<0.001		
Missing	50 (3.4)	17 (1.9)			
Pathological T-stage, n (%)					
T0	335 (23.0)	200 (22.8)	0.9	0.05	-0.01
Tis/Ta/T1	321 (22.0)	201 (22.9)		0.04	0.01
T2	260 (17.8)	161 (18.3)		0.02	0.003
T3	377 (25.9)	230 (26.2)		-0.02	0.01
T4	153 (10.5)	80 (9.1)		-0.14	-0.03
pTx	11 (0.8)	7 (0.8)			
Removed lymph nodes, n (%)***	14 (8, 25)	20 (15, 27)	<0.001		
Missing	85 (6.6)	23 (2.8)			
N+, n (%)	279 (19.7)	171 (20.6)	0.6		
Missing	42 (2.9)	48 (5.5)			

Data presented as median (quartile 1, quartile 3) or frequency (percentage). ORC: open radical cystectomy, RARC: robot-assisted radical cystectomy, SMD: standardized mean difference, PLND: pelvic lymph node dissection, OBS: orthotopic bladder substitution, CCUD:

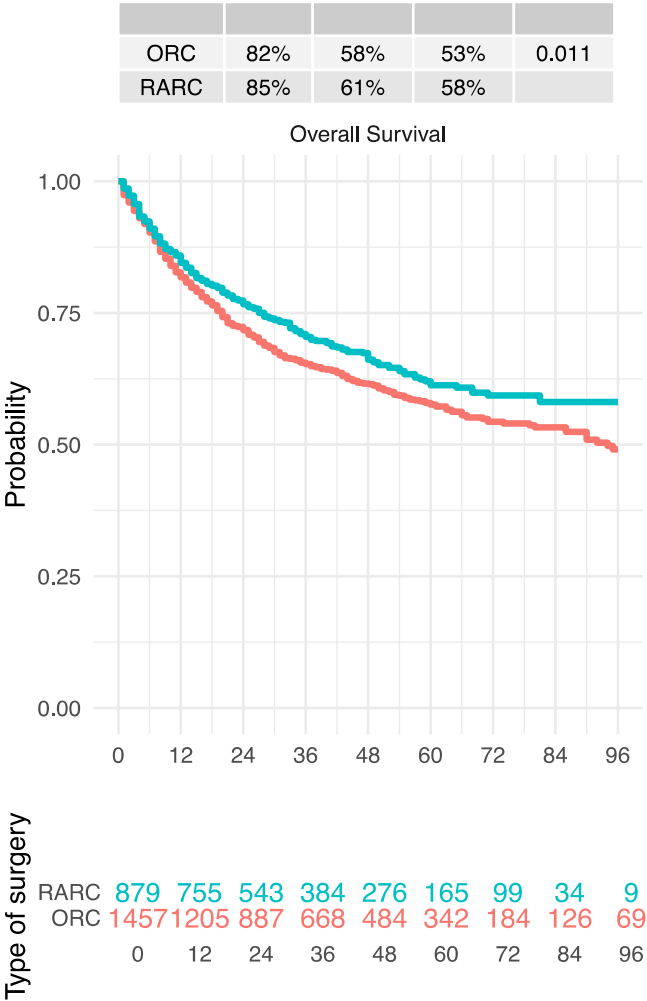
continent cutaneous urinary diversion, LN: lymph node. *Reported for variables used in propensity score matching, ** Total no of patients receiving transfusions during hospitalisation (including intra-OP transfusions). Variable reported since 2014 (denominator post matching ORC n=1097 and RARC n=706), ***in patients undergoing PLND.

RARC was associated with a lower high-grade complication (CD \geq III) rate compared with ORC (17.2% vs. 23.6%, OR=0.67, 95% CI: 0.54-0.83; p<0.001).

eTable 3 (C): Sensitivity analysis for year of surgery, univariable Cox regression analysis for all-cause mortality				
Variable	Characteristics	All-cause mortality		
		HR	95% CI	p*
Estimated blood loss	continuous, ml (per 250)	1.03	1.02-1.05	<0.001
Blood transfusion	yes vs. no	1.76	1.53-2.03	<0.001
No. of removed LN*	continuous (interval 5)	0.90	0.88-0.93	<0.001
Nodal status	N+ vs. N-	3.34	2.90-3.85	<0.001
Complications	CD I-II vs. none	1.00	0.84-1.18	0.983
	CD III vs. none	1.22	1.00-1.47	0.044
	CD IV vs. none	2.24	1.62-3.11	<0.001
Type of surgery	RARC vs. ORC	0.83	0.72-0.96	0.011

*LN: lymph nodes, CD: Clavien-Dindo, RARC: robot-assisted radical cystectomy, ORC: open radical cystectomy, HR: hazard ratio, CI: confidence interval. Bold face representing P < 0.05. * in patients undergoing pelvic lymph node dissection*

eFigure 3. Sensitivity Survival Analysis for Year of Surgery



Cumulative incidence functions illustrating overall survival (OS) for patients undergoing open radical cystectomy (ORC) and robot-assisted radical cystectomy (RARC). Tables include the numbers at risk for OS, and estimates for 1, 5 and 7 years. P-value using log-rank tests.

Due to a slightly higher rate of pT4 tumors in the ORC group (10.5% vs. 9.1%) after propensity score matching including the year of surgery, we performed a subgroup analysis and excluded all patients with pT4 tumor. The difference in OS remained statistically significant with a benefit for RARC (p=0.015)