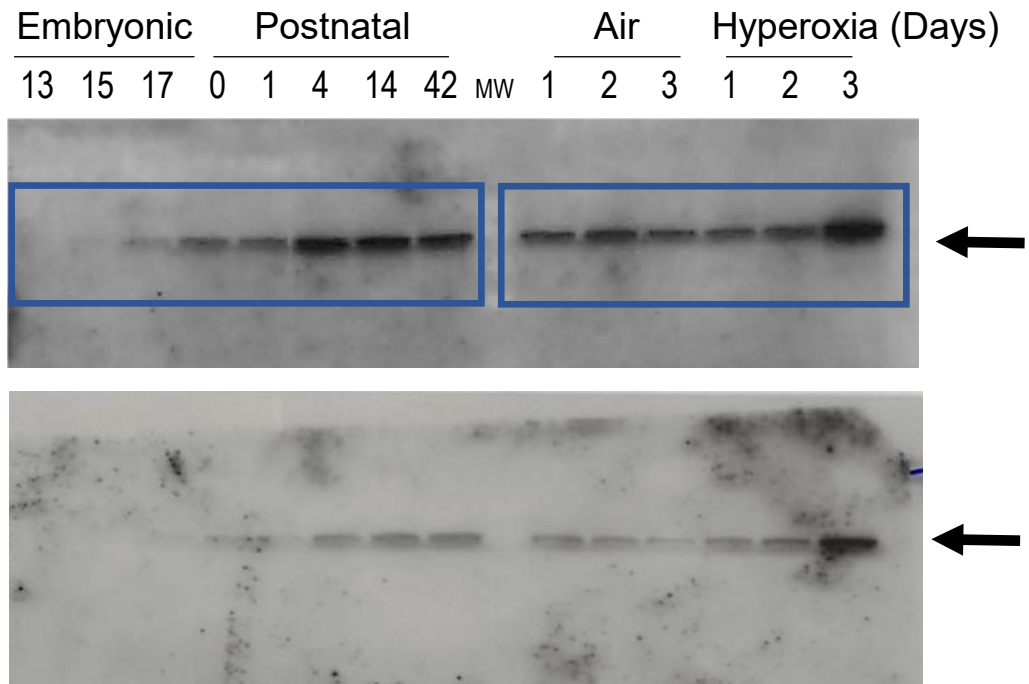


## Figure S3B: SPOCK2 Western blotting



Images in manuscript

Antibody- R&D Systems AF2328

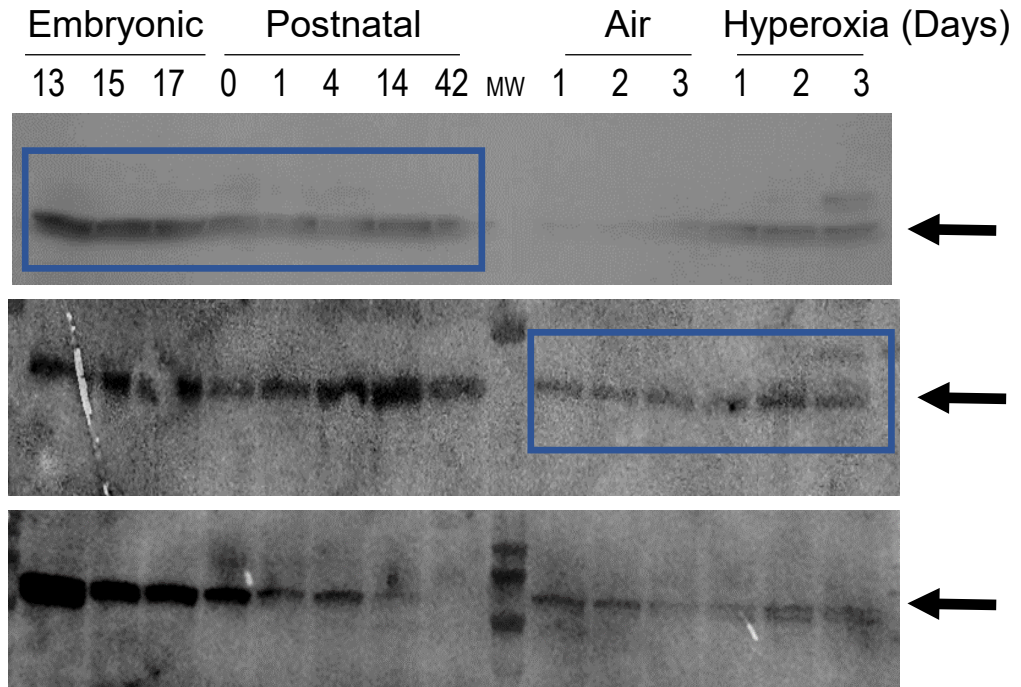
1:200 dilution (overnight at 4°C, in 5% milk)

1:1000 secondary anti-goat HRP (1 hr at room temp. in 5% milk)

Detected - approximately at 47 kDa

Expected size: 60-140 kDa (splice variants)

## Figure S3B: CTSH Western blotting



Images in manuscript

Antibody - LS Bio LS-C353958

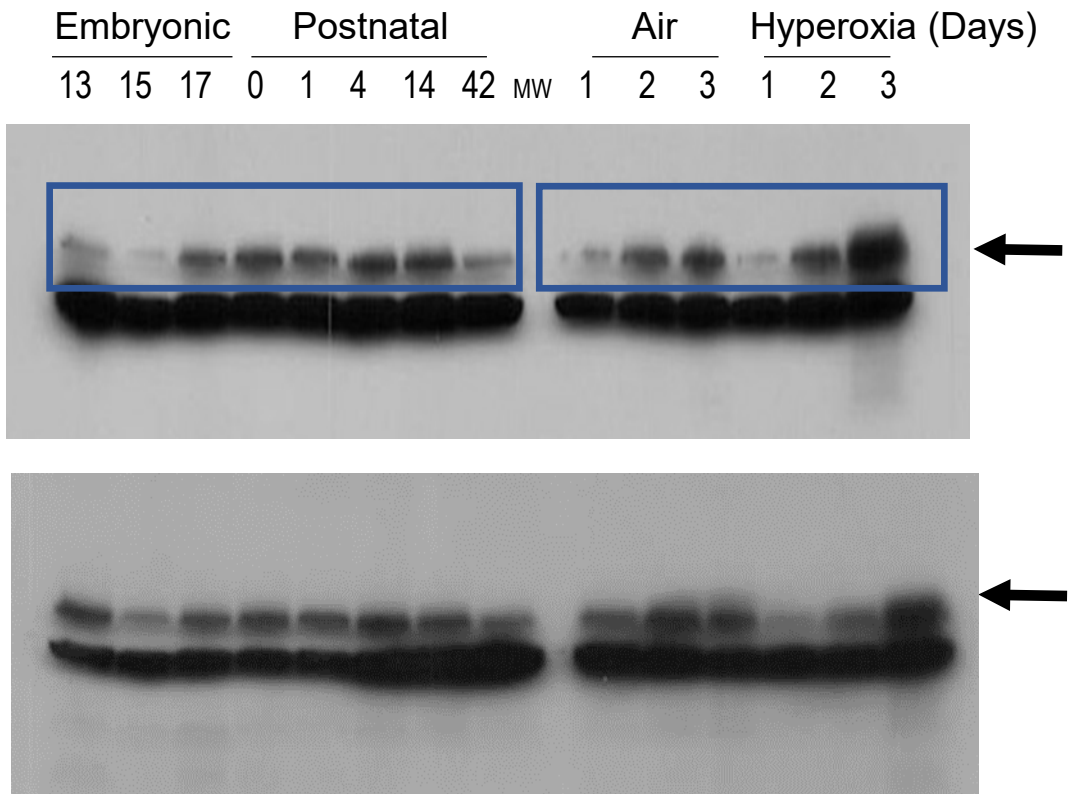
1:400 (overnight at 4°C, in 5% milk)

1:2000 secondary anti-rabbit HRP (1 hr at room temp. in 5% milk)

Detected - approximately at 38 kDa

Expected size: 37-50 kDa (splice variants)

## Figure S3B: AGER Western blotting



Images in manuscript

Antibody- Santa Cruz (sc-365154)

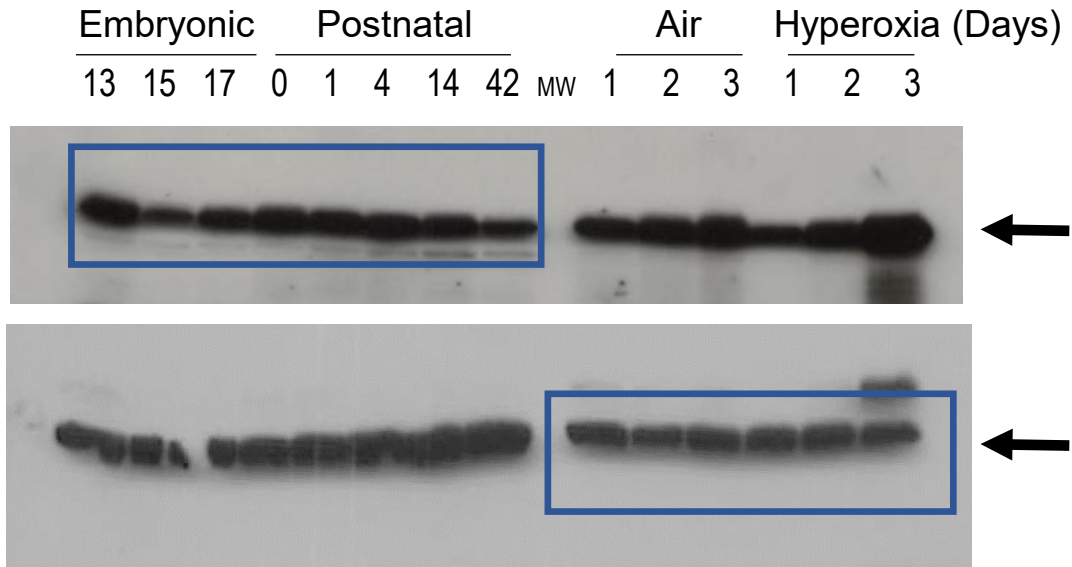
1:500 (overnight at 4°C, in 5% milk)

1:2000 secondary anti-mouse G1 HRP (1 hr at room temp. in 5% milk)

Detected - approximately at 46 kDa

Expected size: 46 kDa

## Figure S3B: $\beta$ -Actin Western blotting



Images in manuscript

Antibody- Santa Cruz (sc-47778)

1:500 (overnight at 4°C, in 5% milk)

1:1500 secondary anti-mouse G1 HRP (1 hr at room temp. in 5% milk)

Detected - approximately at 42 kDa

Expected size: 42 kDa