

Supporting Information

Structure-Based Drug Design of Bisubstrate Inhibitors of Phenylethanolamine *N*-Methyltransferase (PNMT) Possessing Low Nanomolar Affinity at Both Substrate Binding Domains

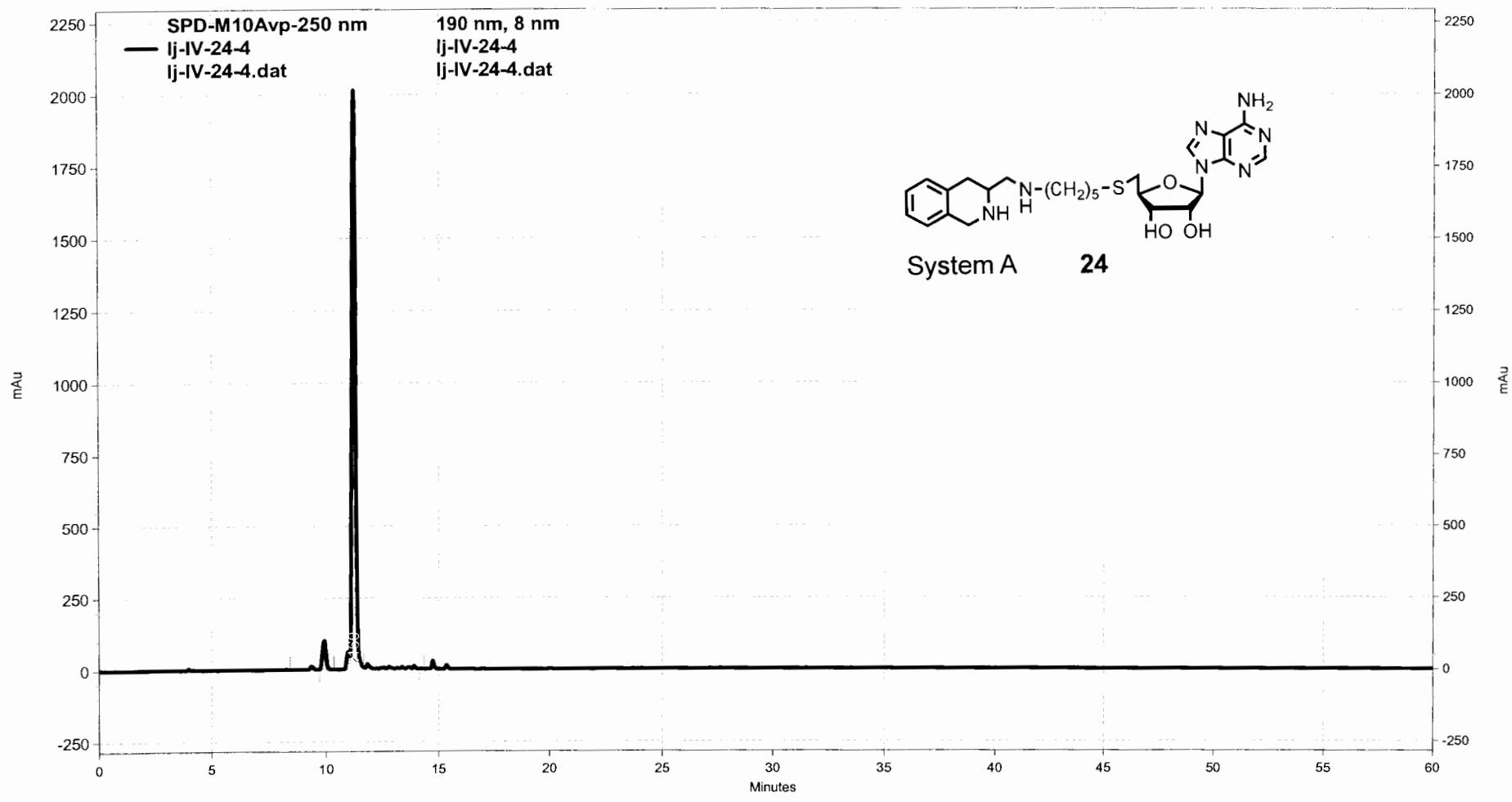
Jian Lu,[†] Aaron G. Bart,[†] Qian Wu,[‡] Kevin R. Criscione,[†] Michael J. McLeish,^{*,‡} Emily E. Scott,^{*,†} and Gary L. Grunewald^{*,†}

[†]*Department of Medicinal Chemistry, University of Kansas, Lawrence, KS 66045, ‡Department of Chemistry and Chemical Biology, Purdue School of Science, IUPUI, Indianapolis, IN 46202*

Table of Contents

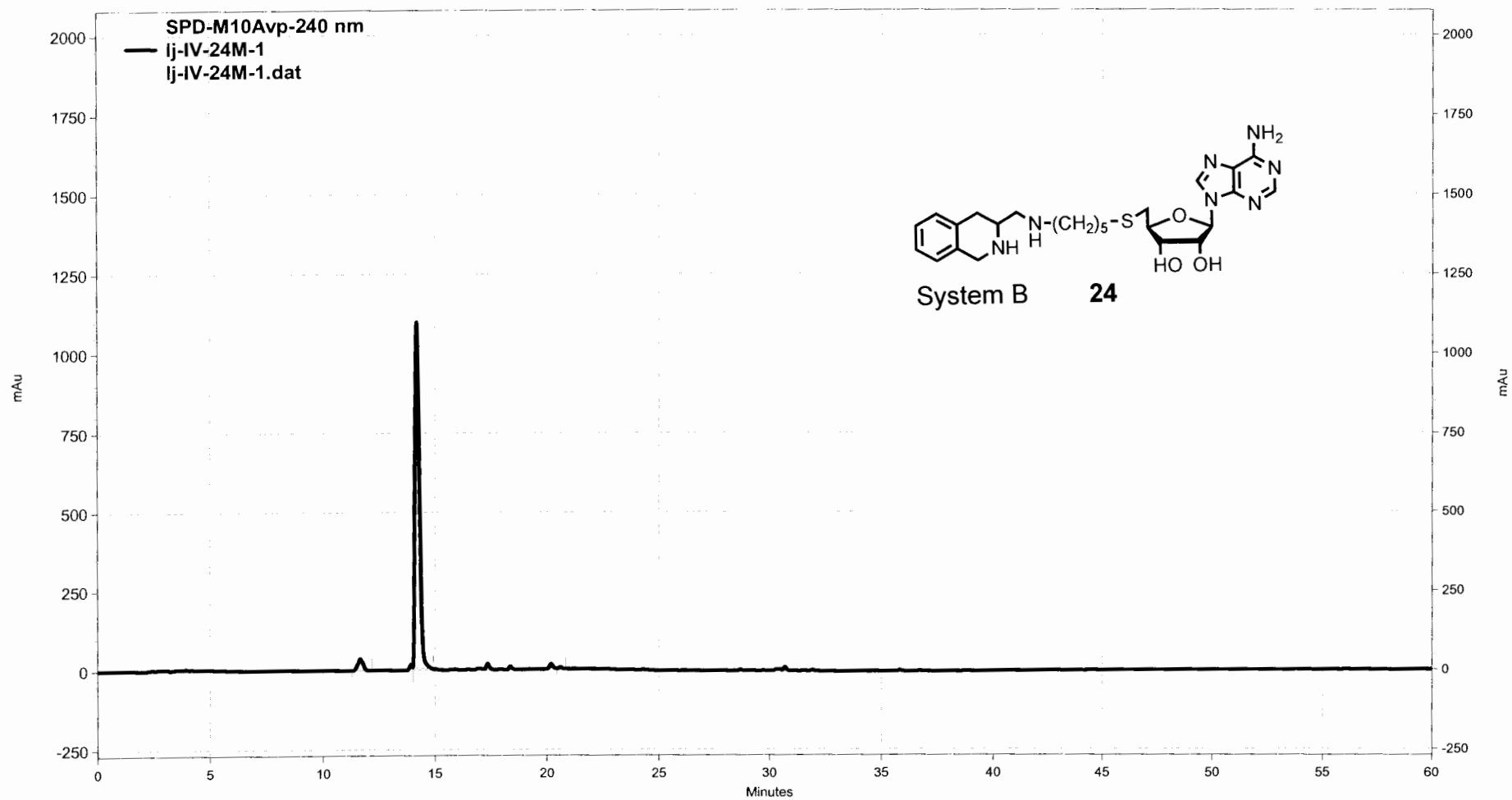
HPLC Tracings (see Experimental for details)

24 System A	S2
24 System B	S3
25 System A	S4
25 System B	S5
28 System A	S6
28 System B	S7
30 System A	S8
30 System B	S9
31 System A	S10
31 System B	S11

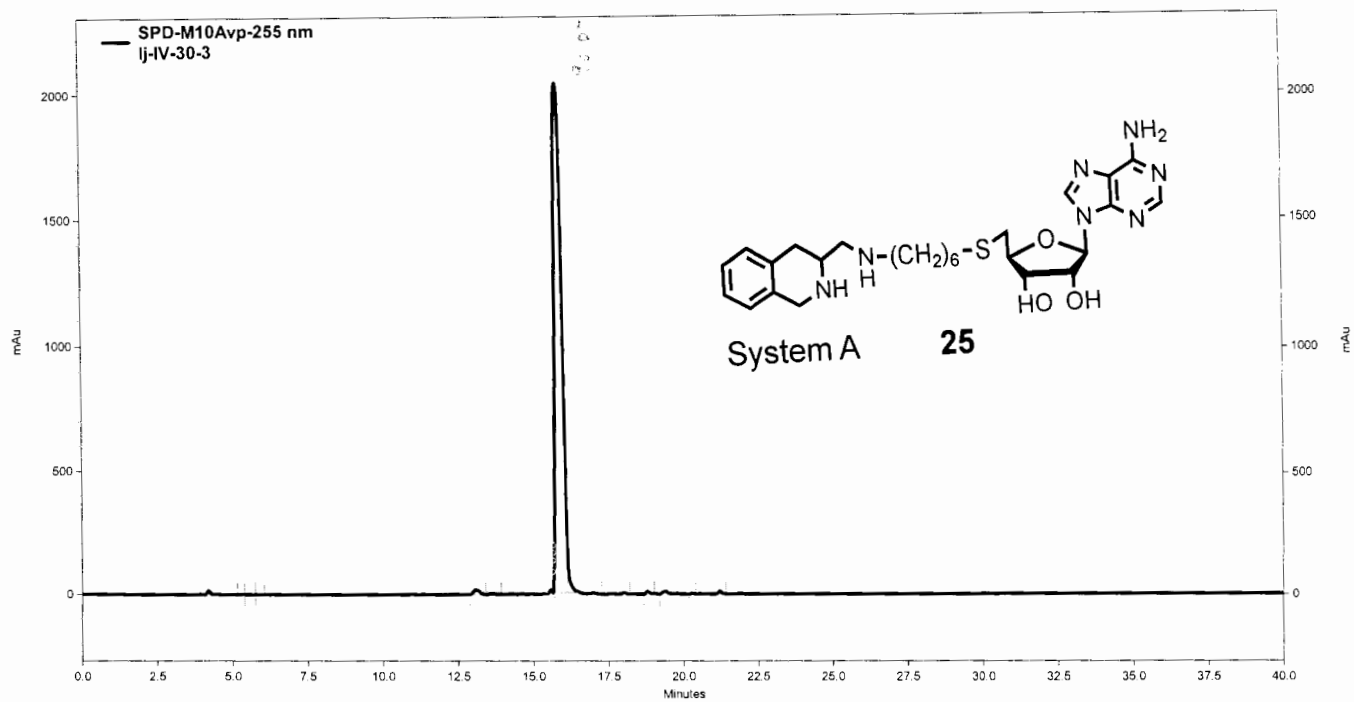


— C:\EZStart\Projects\Default\Data\Lu\lj-IV-24-4.dat, SPD-M10Avp-250 nm

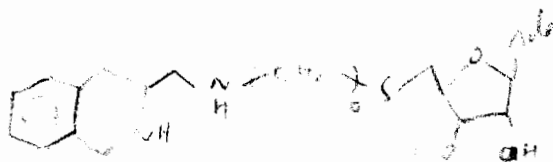
C:\EZStart\Projects\Default\Data\Lu\lj-IV-24-4.dat, 190 nm, 8 nm



— C:\EZStart\Projects\Default\Data\Lu\lj-IV-24M-1.dat, SPD-M10Avp-240 nm

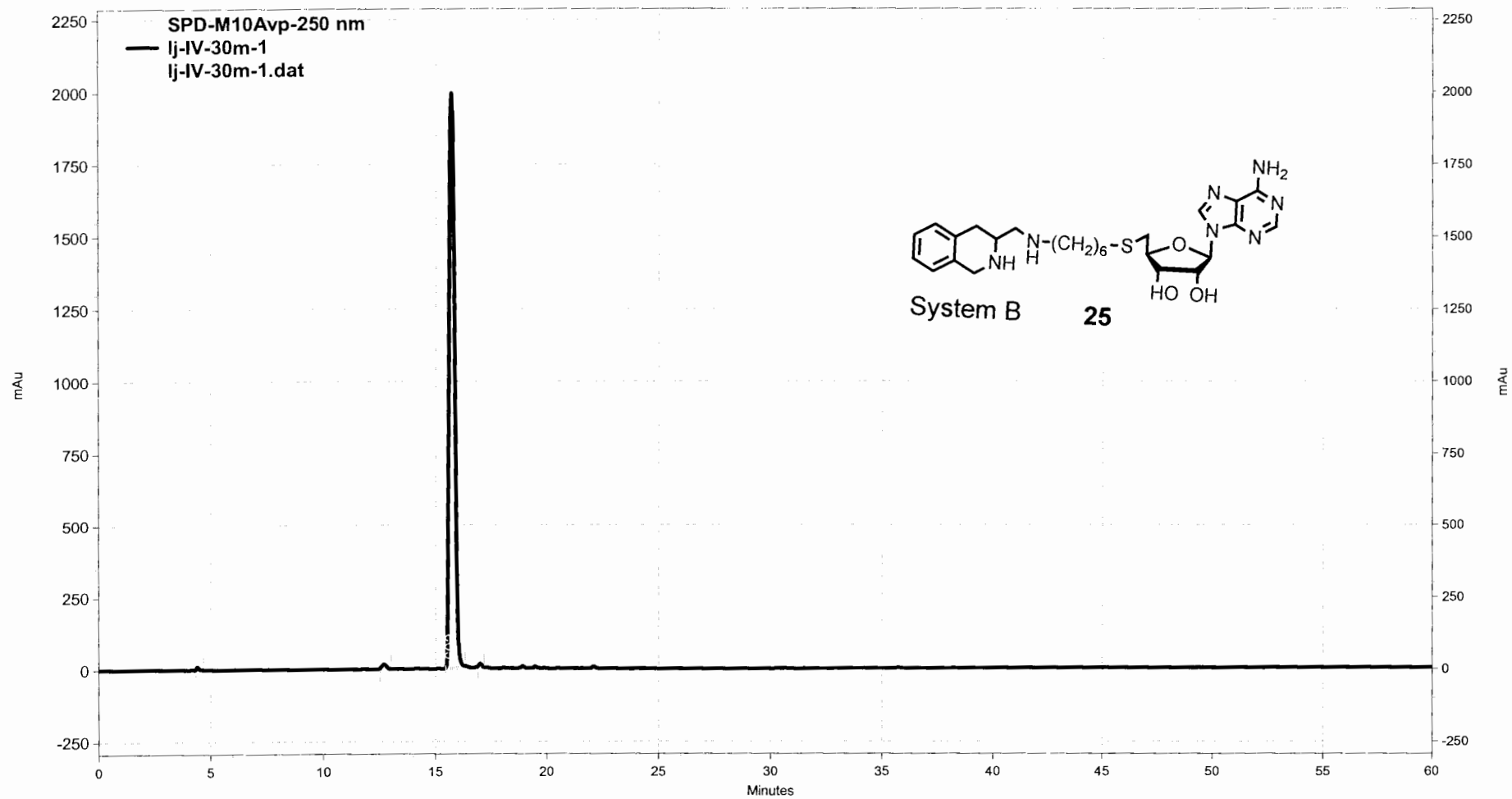


C:\EZStart\Projects\Default\Data\Lu\lj-IV-30-3.dat, SPD-M10Avp-255 nm

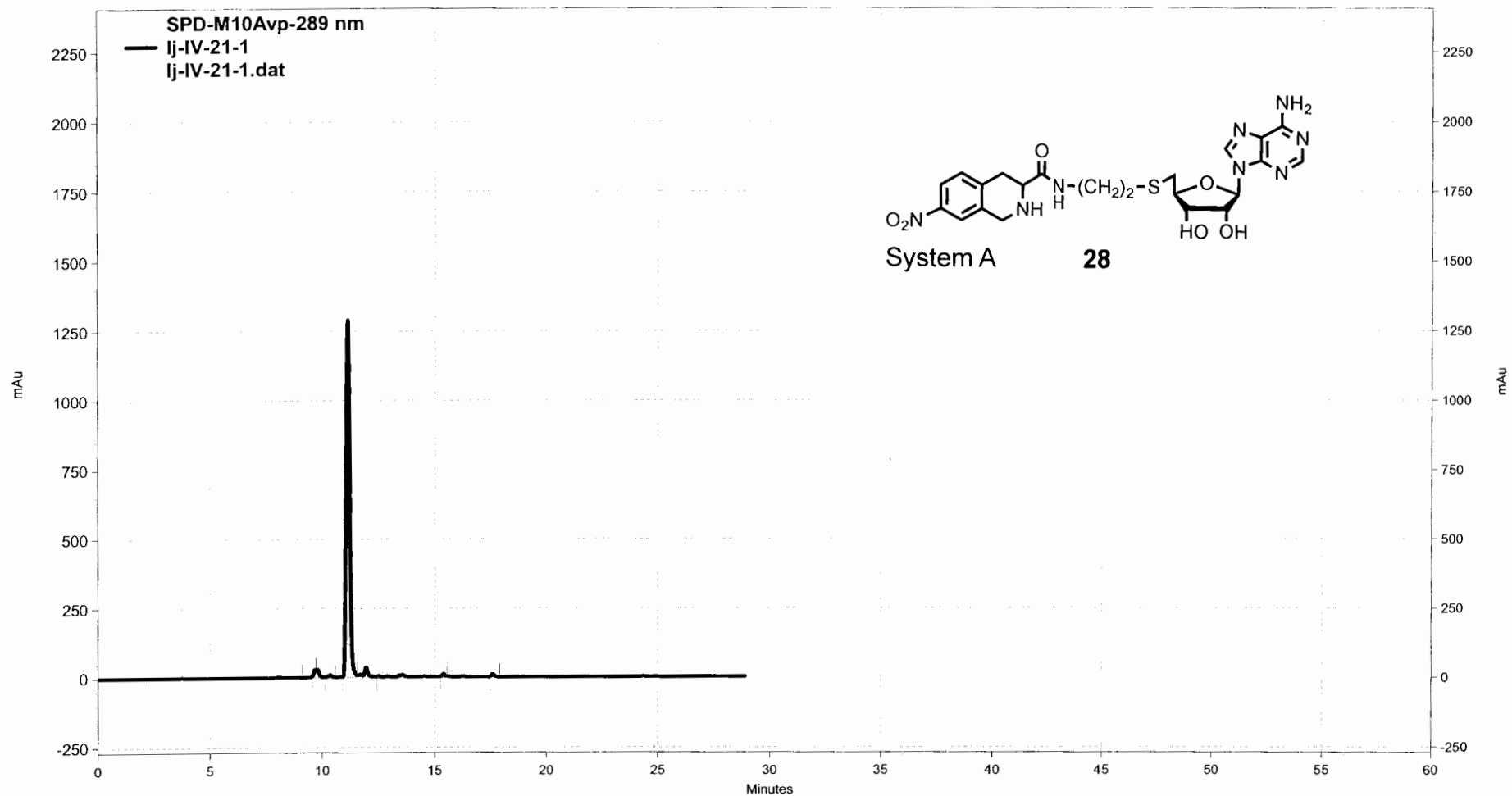


$H_2O \approx 60\% \text{ (v/v)} / CH_2Cl_2$

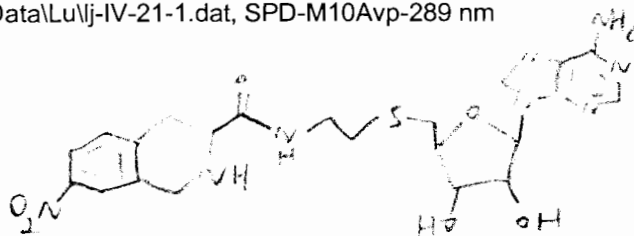
100/0 \rightarrow 0/100 in 60 mins



C:\EZStart\Projects\Default\Data\Lu\lj-IV-30m-1.dat, SPD-M10Avp-250 nm

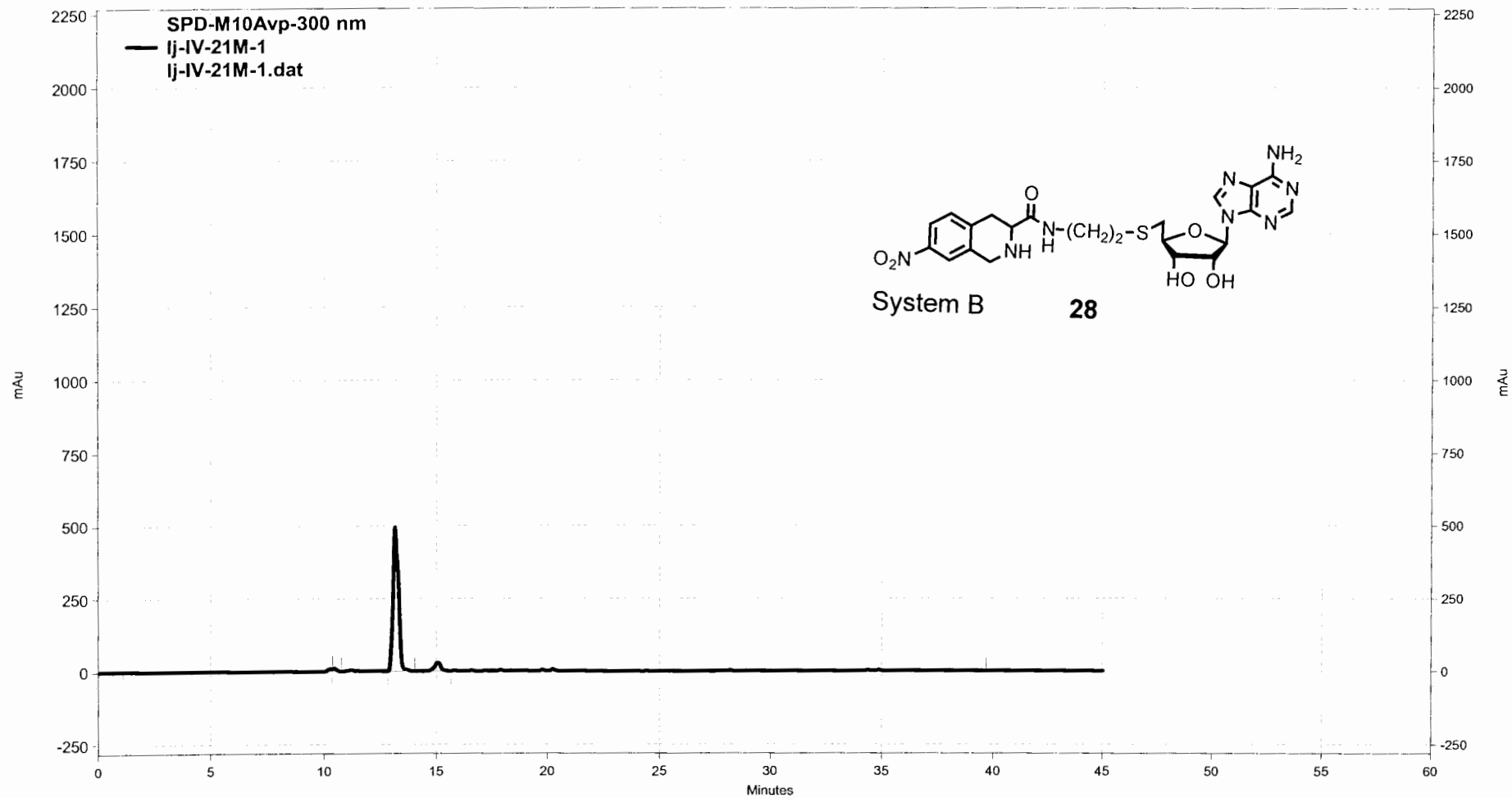


C:\EZStart\Projects\Default\Data\Lu\lj-IV-21-1.dat, SPD-M10Avp-289 nm

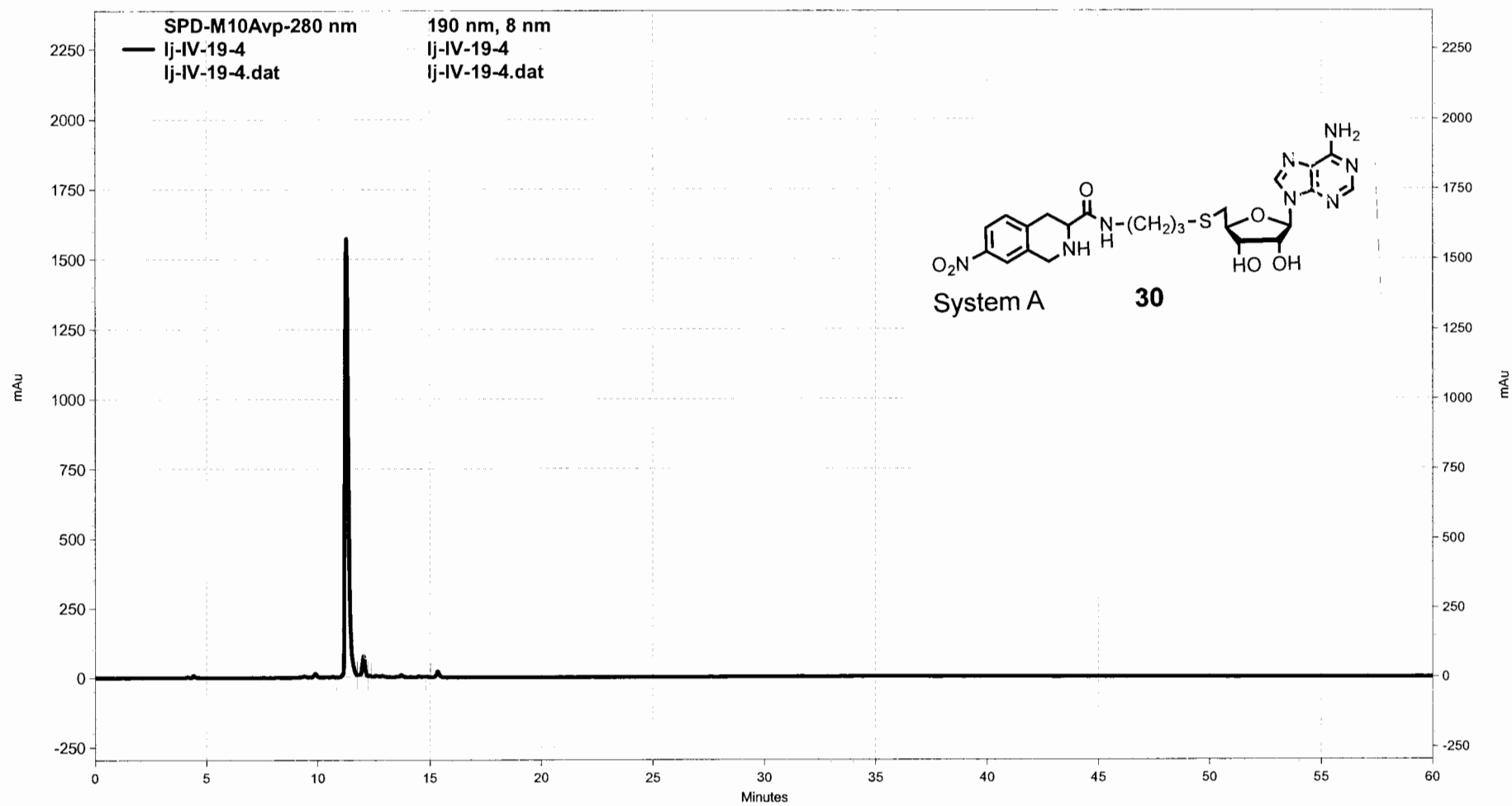


H₂O (0.7% TFA) / CH₂Cl₂

99/1 → 1/99 in 60 min.

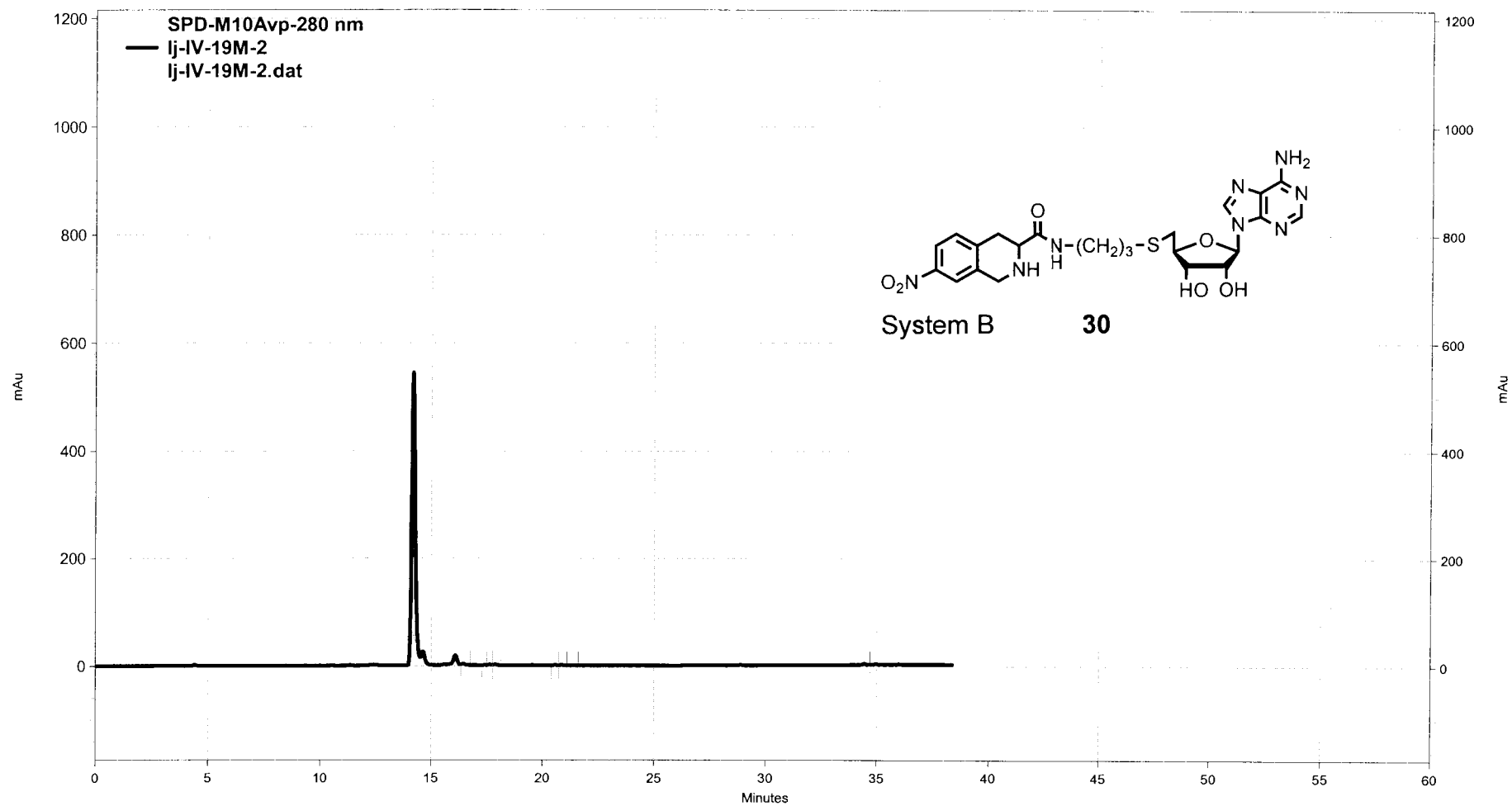


C:\EZStart\Projects\Default\Data\Lulj-IV-21M-1.dat, SPD-M10Avp-300 nm

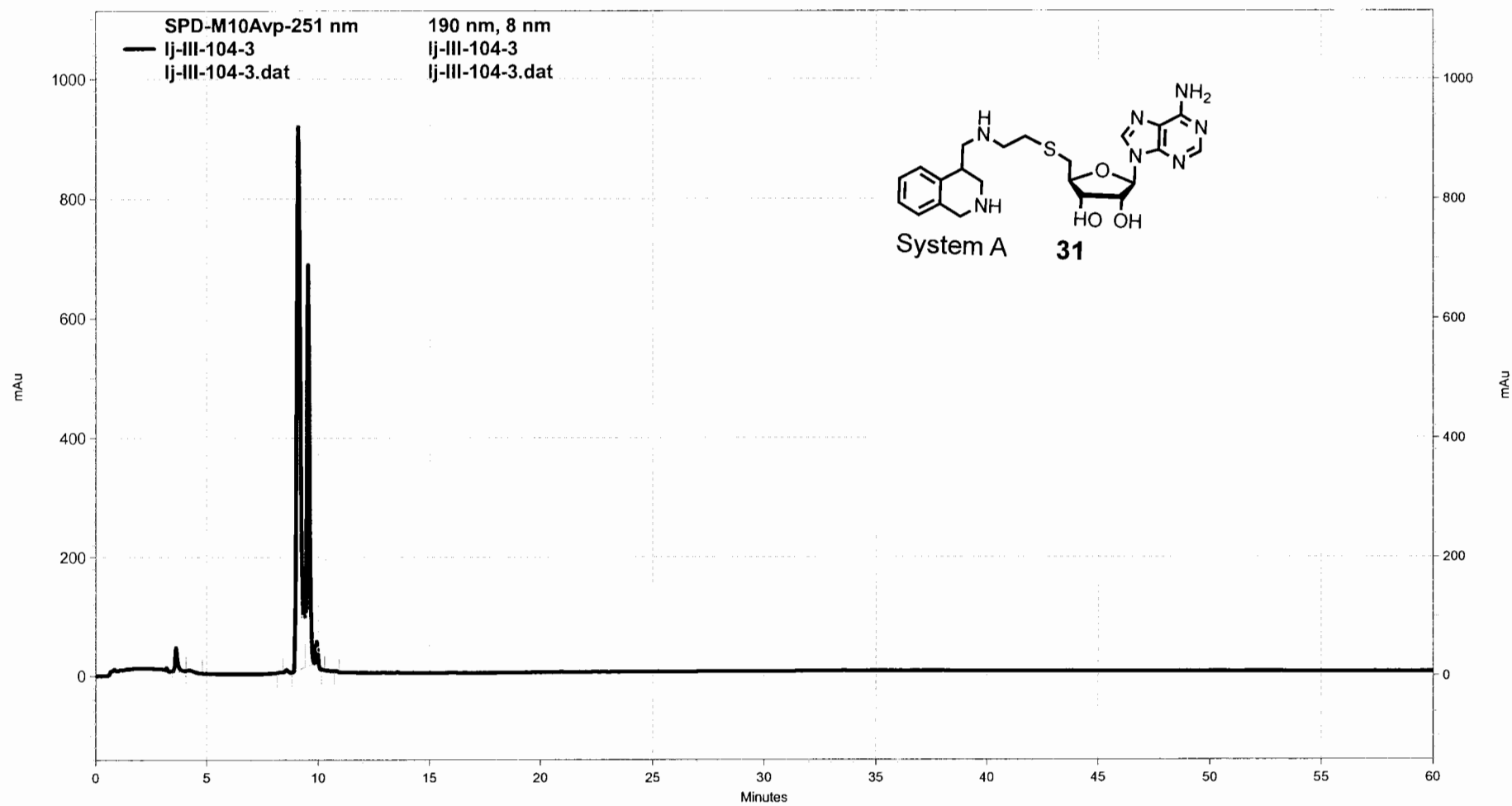


— C:\EZStart\Projects\Default\Data\Lu\lj-IV-19-4.dat, SPD-M10Avp-280 nm

— C:\EZStart\Projects\Default\Data\Lu\lj-IV-19-4.dat, 190 nm, 8 nm

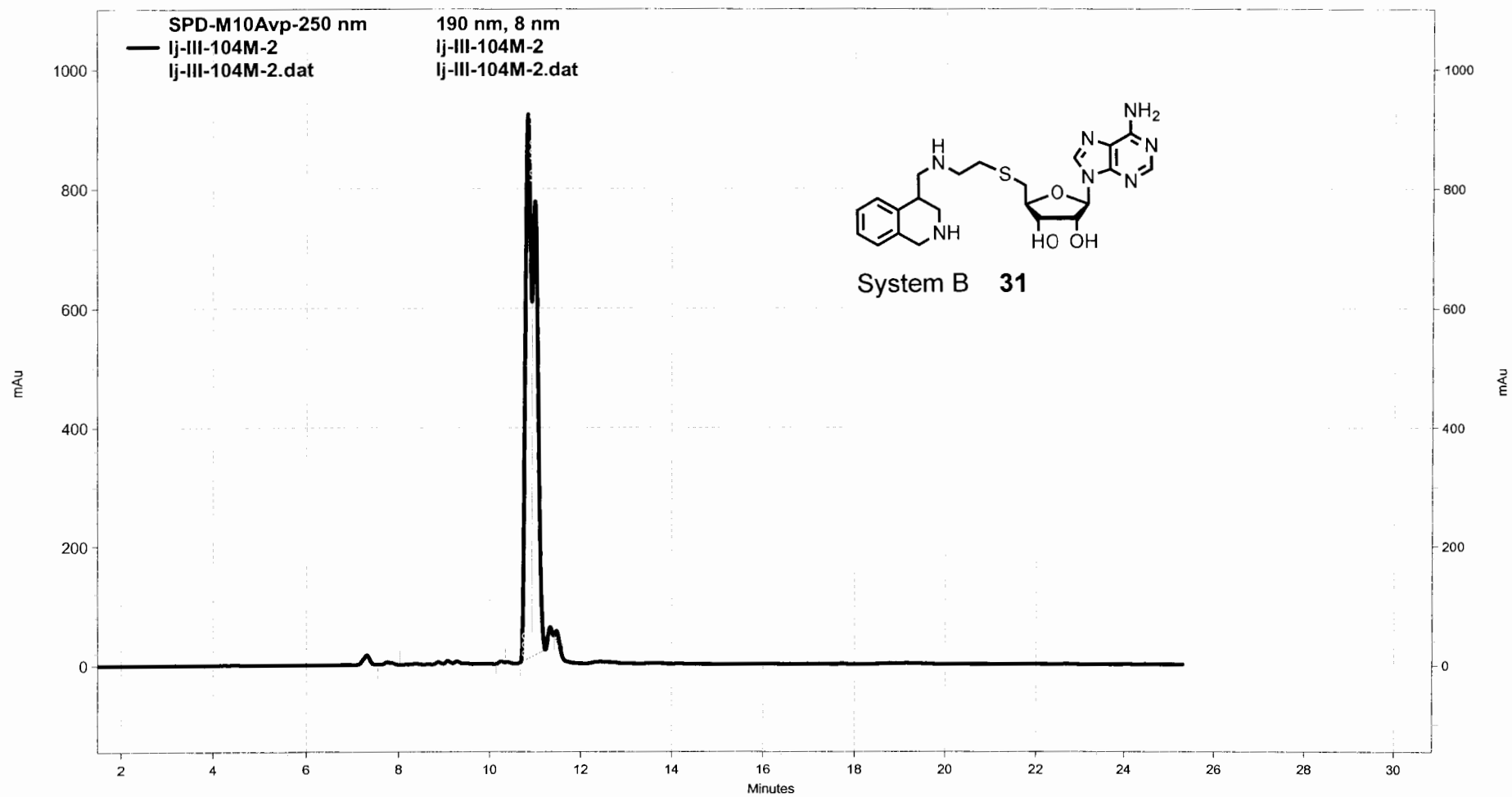


— C:\EZStart\Projects\Default\Data\Lu\lj-IV-19M-2.dat, SPD-M10Avp-280 nm



— C:\EZStart\Projects\Default\Data\Lu\lj-III-104-3.dat, SPD-M10Avp-251 nm

..... C:\EZStart\Projects\Default\Data\Lu\lj-III-104-3.dat, 190 nm, 8 nm



— C:\EZStart\Projects\Default\Data\Lu\lj-III-104M-2.dat, SPD-M10Avp-250 nm

C:\EZStart\Projects\Default\Data\Lu\lj-III-104M-2.dat, 190 nm, 8 nm