

Supplementary materials

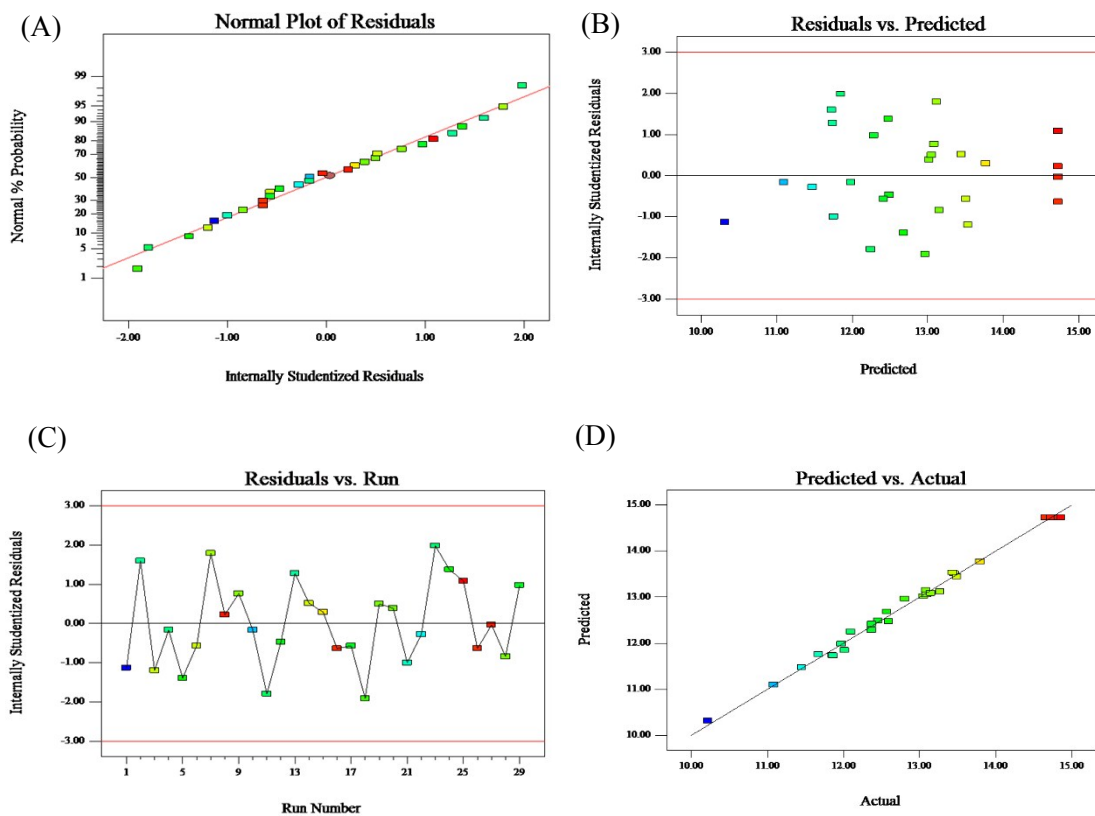


Fig. S1 Diagnostic plots for the adequacy of proposed model. Normal probability plot of the studentized residuals (A), Internally studentized residuals vs. predicted response (B), Internally studentized residuals vs. actual runs (C), and predicted vs actual(D).

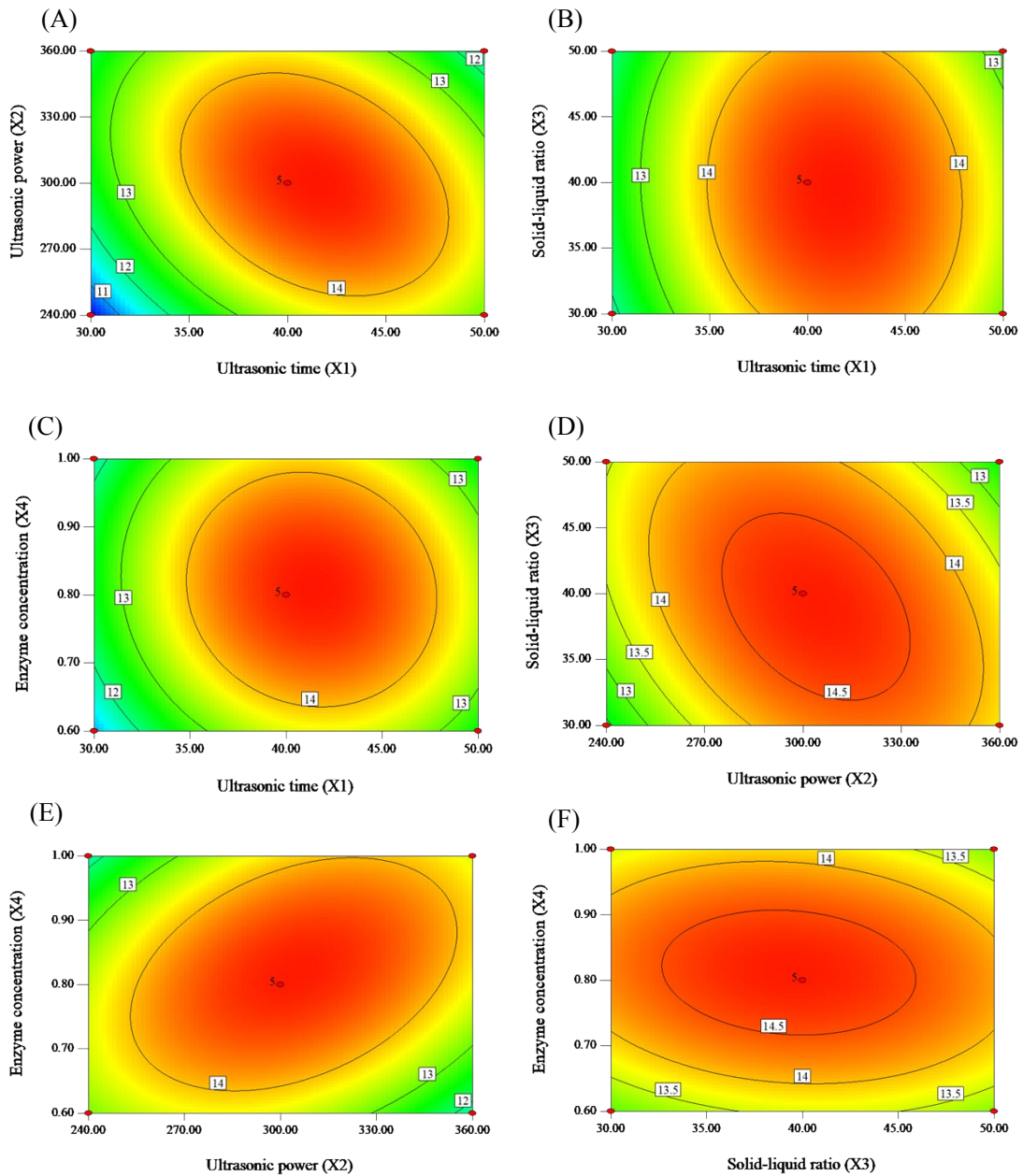


Fig.2 Response surface plots showing the effects of ultrasonic time (X1), ultrasonic power (X2), solid-liquid ratio (X3) and cellulose concentration (X4) on the extraction yield of SCP (%)

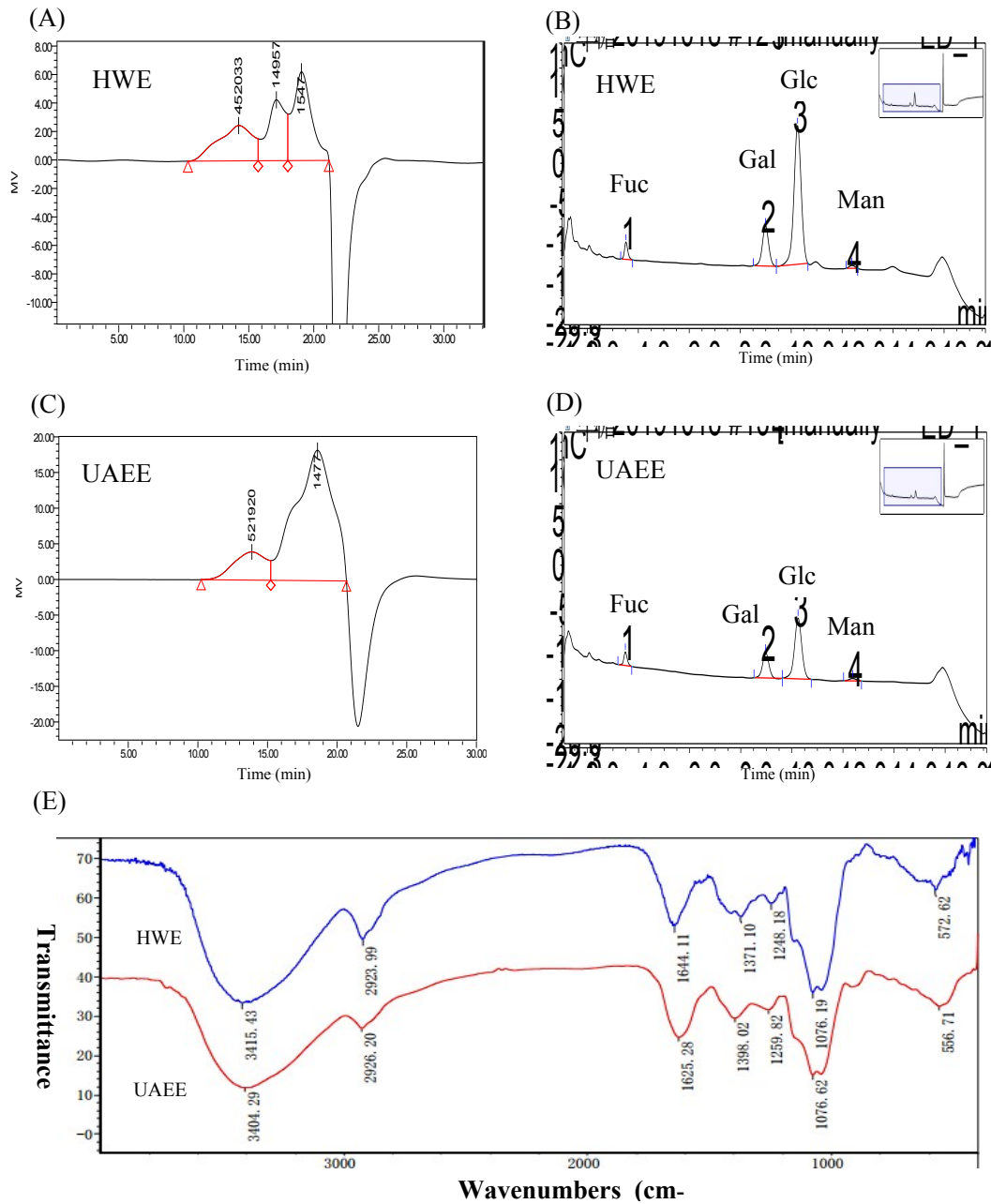


Fig.S3 High performance size exclusion chromatograms (A and C) and high performance liquid chromatography profiles (B and D) of SCP-HWE and SCP-UAEE, respectively; Fourier transform infrared spectroscopy of SCP (E). SCP-HWE, *S.crispa* polysaccharides extracted by hot water extraction; SCP-UAEE, *S.crispa* polysaccharides extracted by ultrasonic-assisted enzymatic extraction; Fuc, fucose; Gal, galactose; Glc, glucose; Man, mannose.