

Fig.1G

* SW-480 : si-CTR / si-ICAM-1 / si-ICAM-1 #2

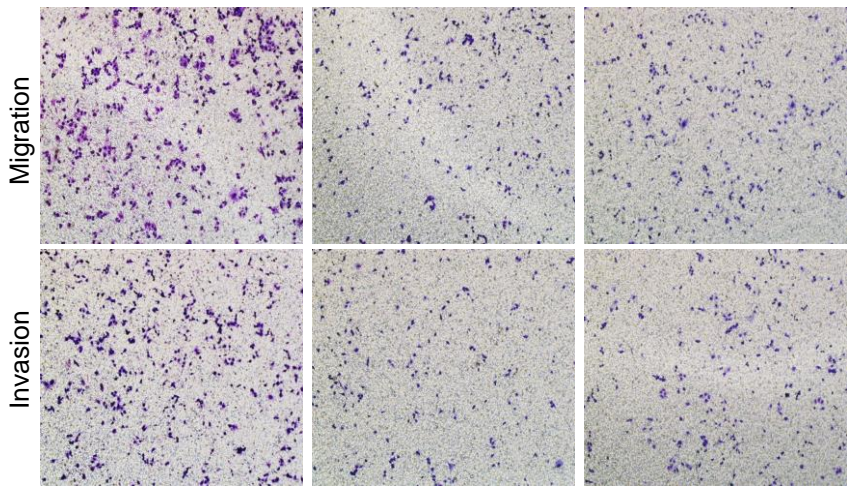


Fig.1I

* Mouse xenograft : sh-CTR / sh-ICAM-1

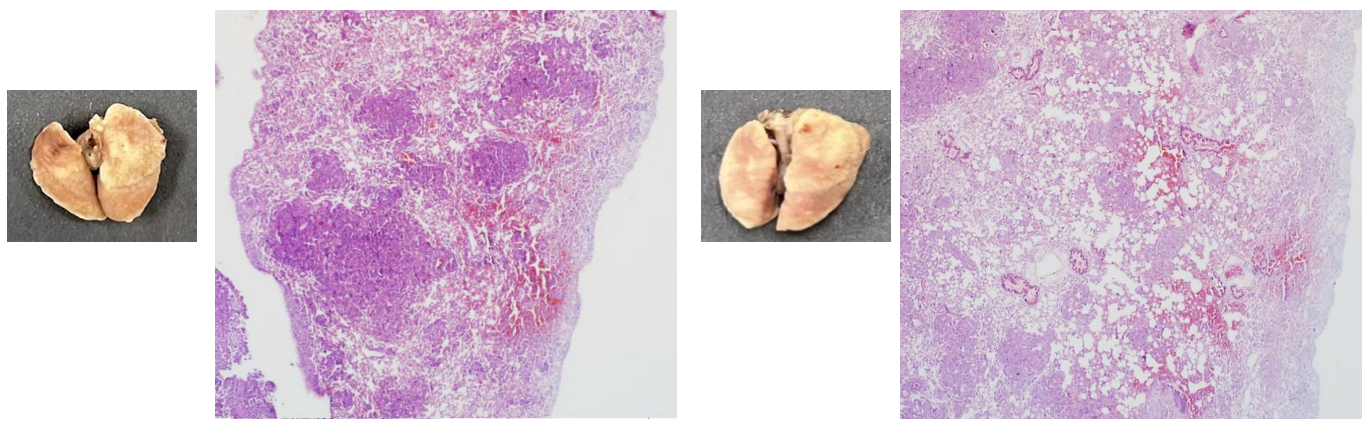


Fig.1K

* Mouse xenograft : sh-CTR / sh-ICAM-1

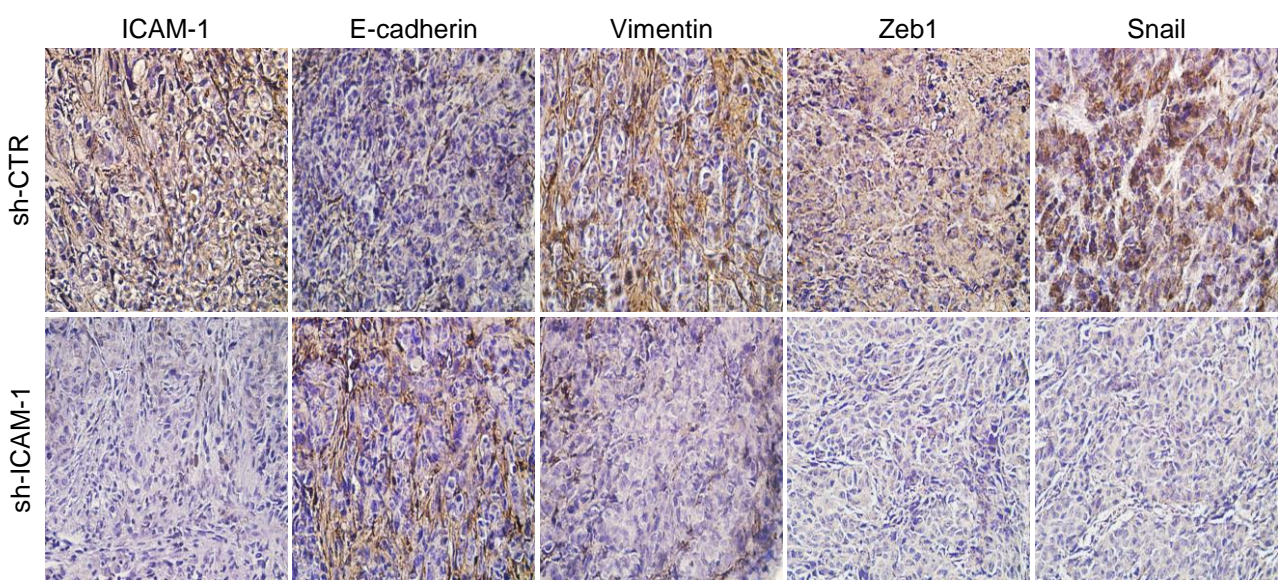


Fig.1L

* SW-480 : si-CTR / si-ICAM-1 / si-ICAM-1 #2

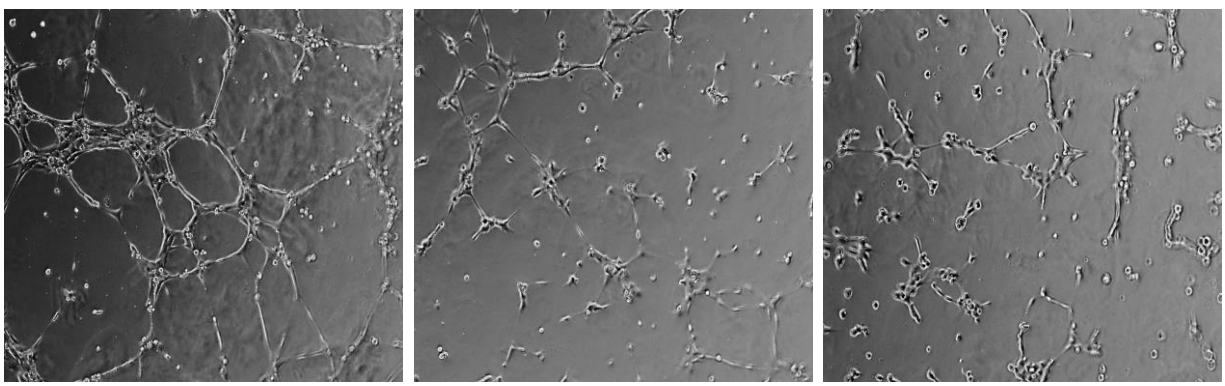


Fig.1N

* Mouse xenograft : sh-CTR / sh-ICAM-1

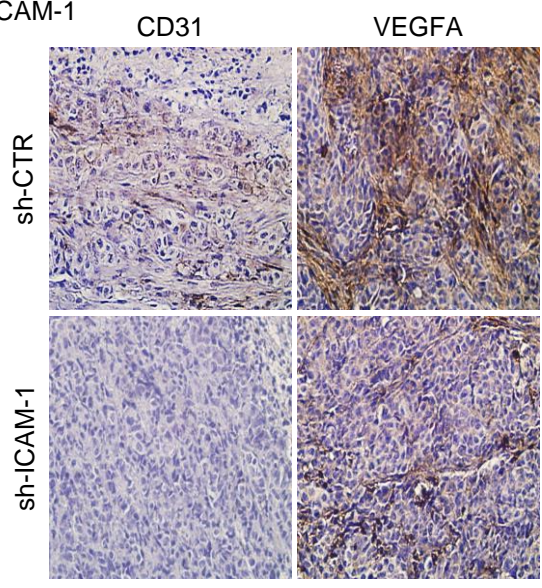


Fig.10

* Mouse xenograft : sh-CTR / sh-ICAM-1

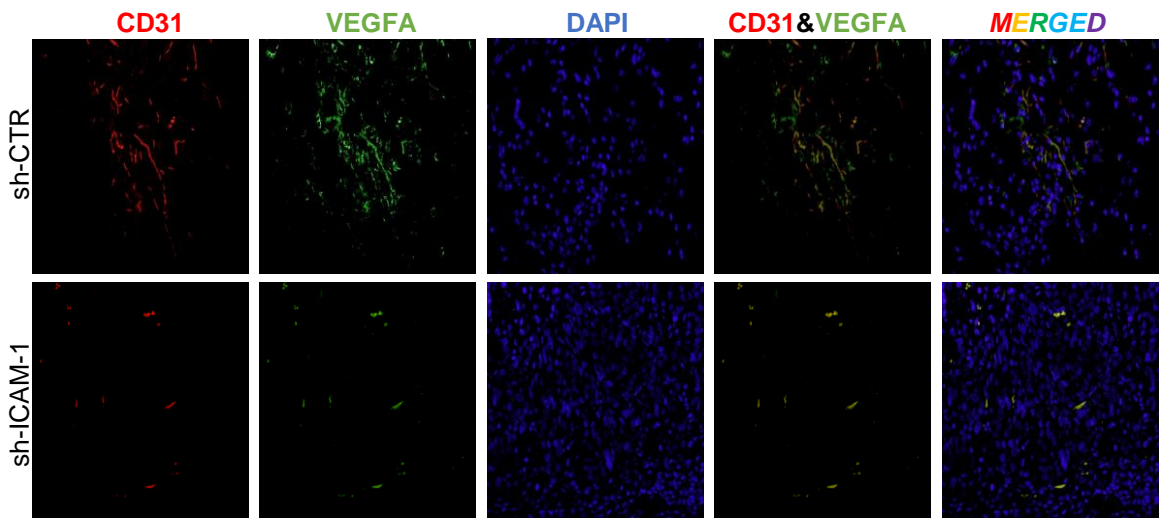


Fig.S1C

* HT-29 : CTR / ICAM-1 O/E

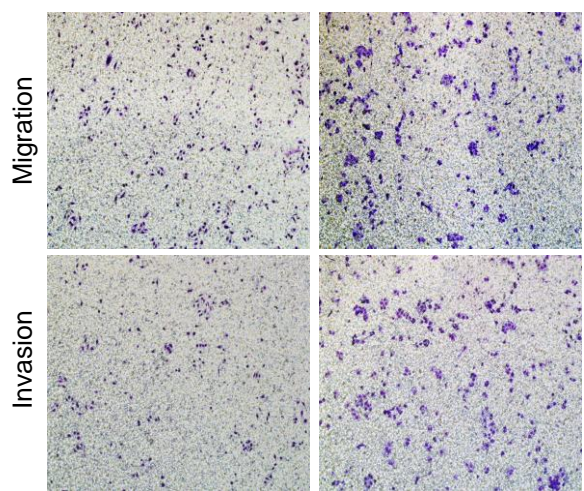


Fig.1D

* HT-29 : CTR / ICAM-1 O/E

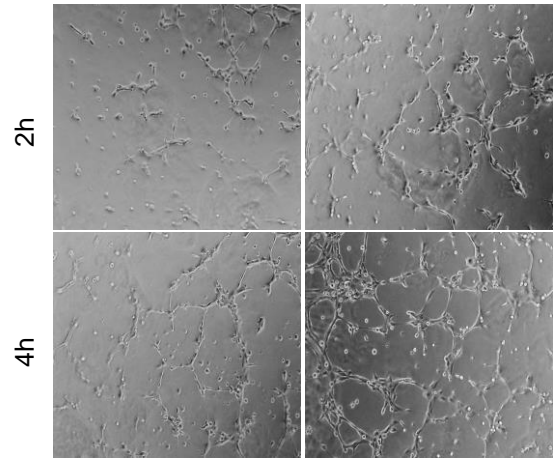


Fig.1H

* Mouse xenograft – Tail vein injection : sh-CTR / sh-ICAM-1



Fig.1I

* Mouse xenograft – Tail vein injection : sh-CTR / sh-ICAM-1

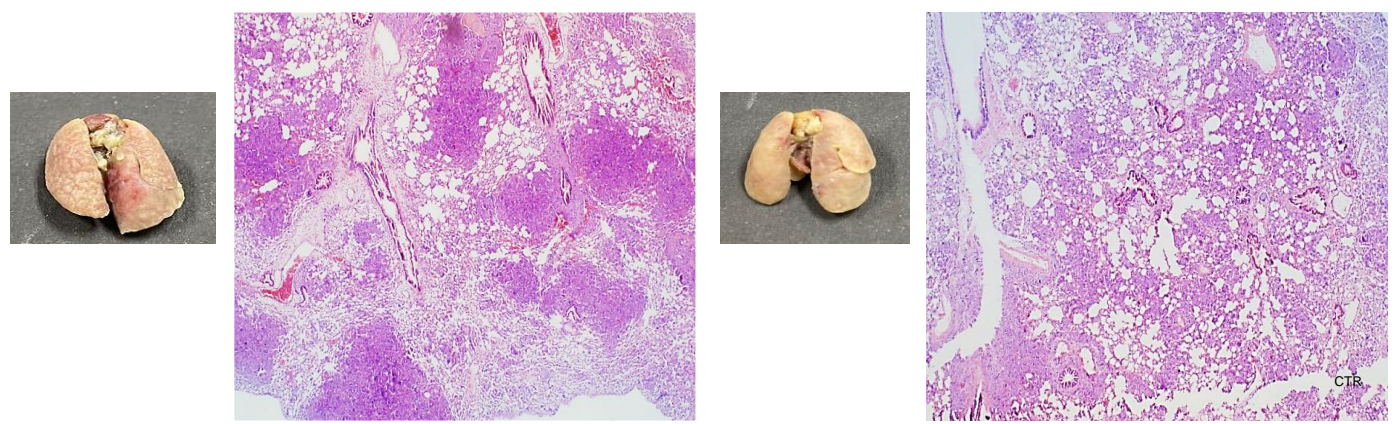


Fig.2F

* Mouse xenograft : sh-CTR / sh-ICAM-1

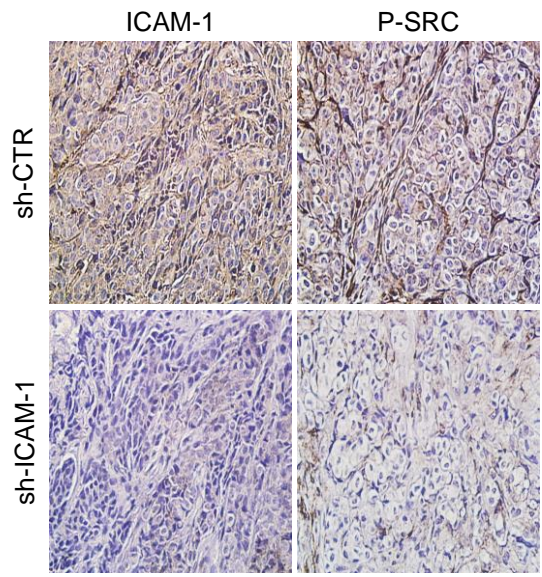


Fig.2H

* HT-29 : CTR / ICAM-1 O/E / ICAM-1 O/E +SRCi

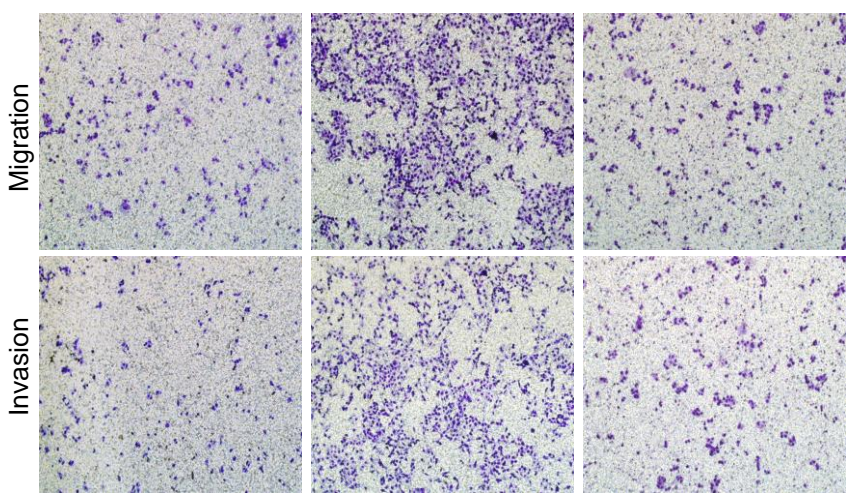


Fig.2I

* HT-29 : CTR / ICAM-1 O/E / ICAM-1 O/E +SRCi

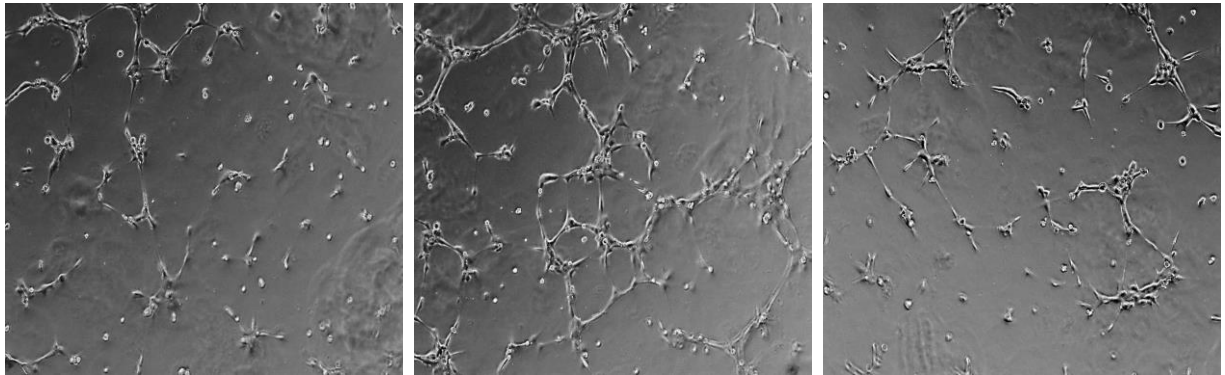


Fig.2L

* HT-29 : CTR / ICAM-1 O/E / ICAM-1 O/E +STAT3i

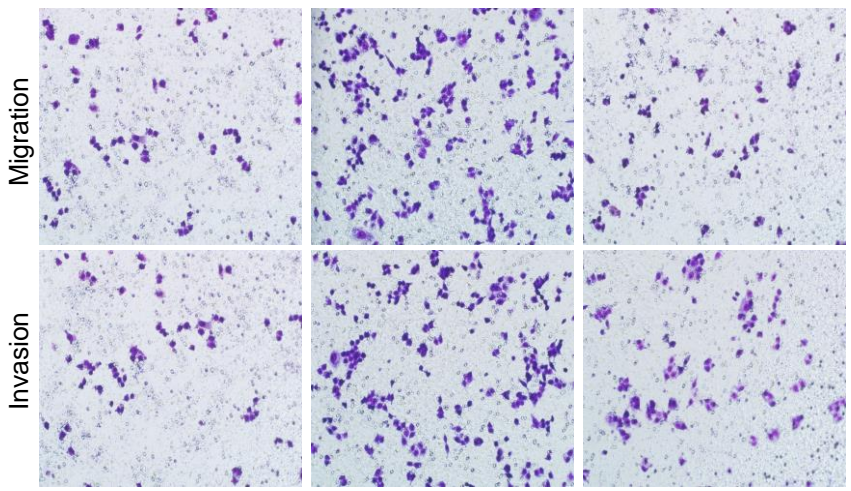


Fig.2M

* HT-29 : CTR / ICAM-1 O/E / ICAM-1 O/E +STAT3i

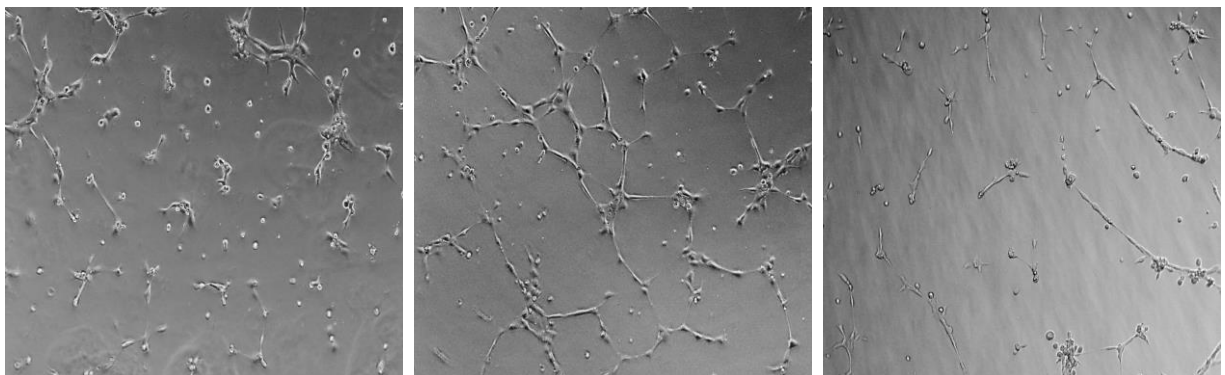


Fig.S2D

* SW-480 : si-CTR / si-SRC #1 / si-SRC #2

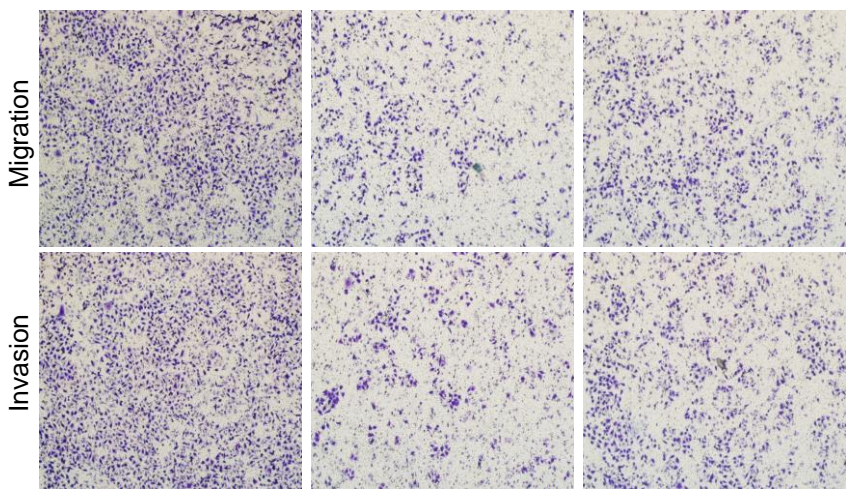


Fig.S2E

* SW-480 : si-CTR / si-SRC #1 / si-SRC #2

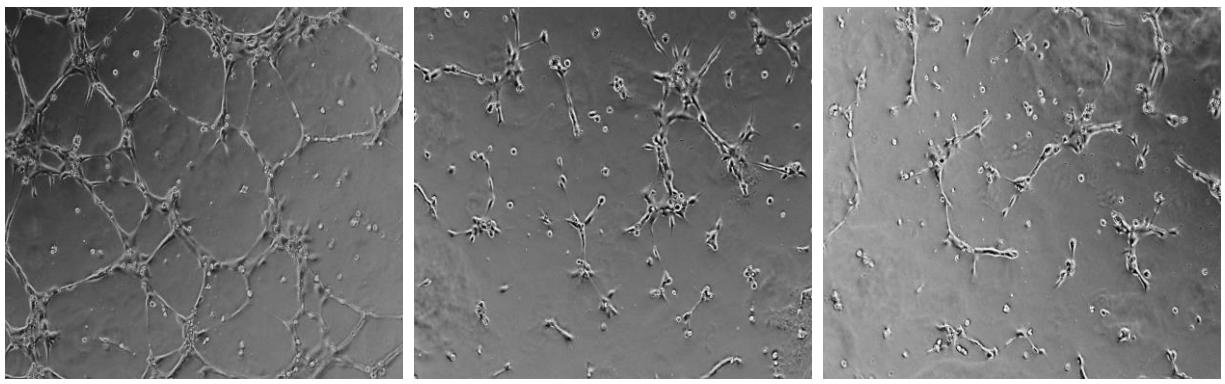


Fig.S2G

* HT-29 : CTR / SRC O/E

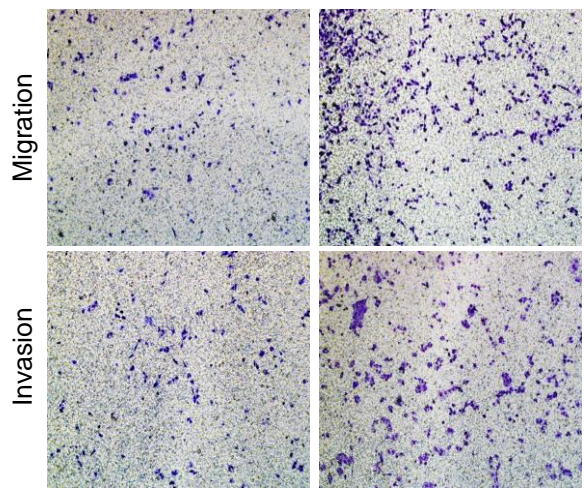


Fig.S2H

* HT-29 : CTR / SRC O/E

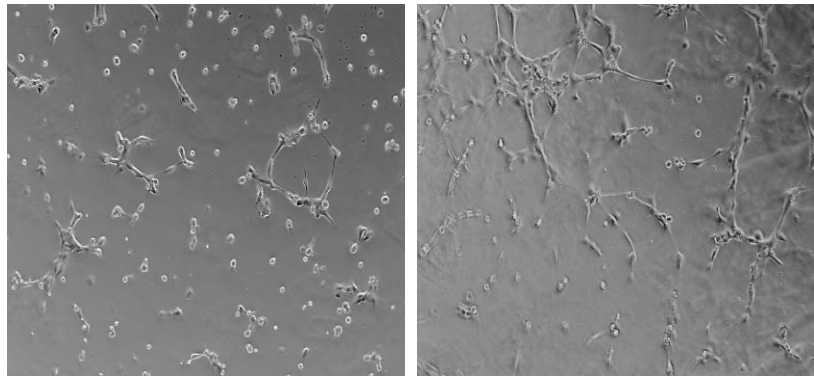


Fig.S2J

* HT-29 : CTR / ICAM-1 / ICAM-1 +si-SRC #1 / ICAM-1 +si-SRC #2

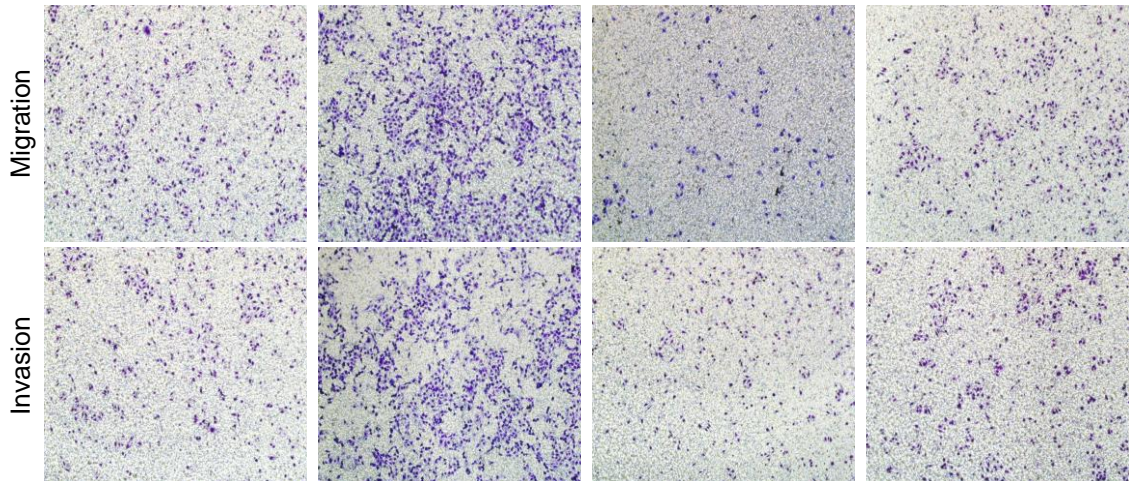


Fig.S2K

* HT-29 : CTR / ICAM-1 / ICAM-1 +si-SRC #1 / ICAM-1 +si-SRC #2

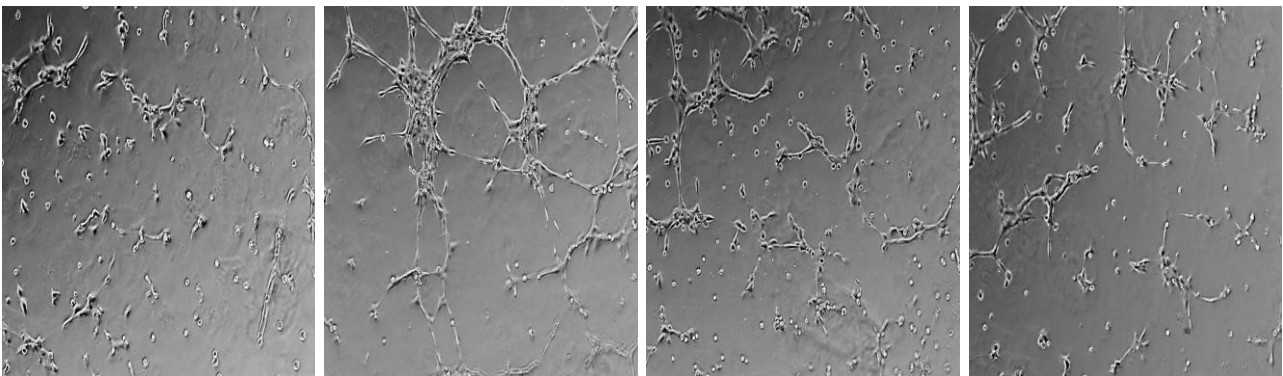


Fig.3B – PLA

* SW-480 : ICAM-1 / ICAM1 +SRC

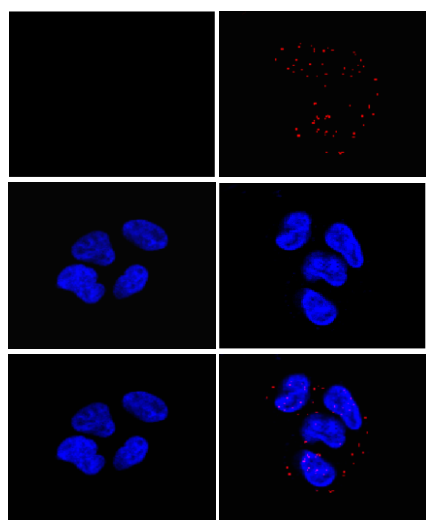


Fig.3G - PLA

* 293T : - / WT / YA / YD

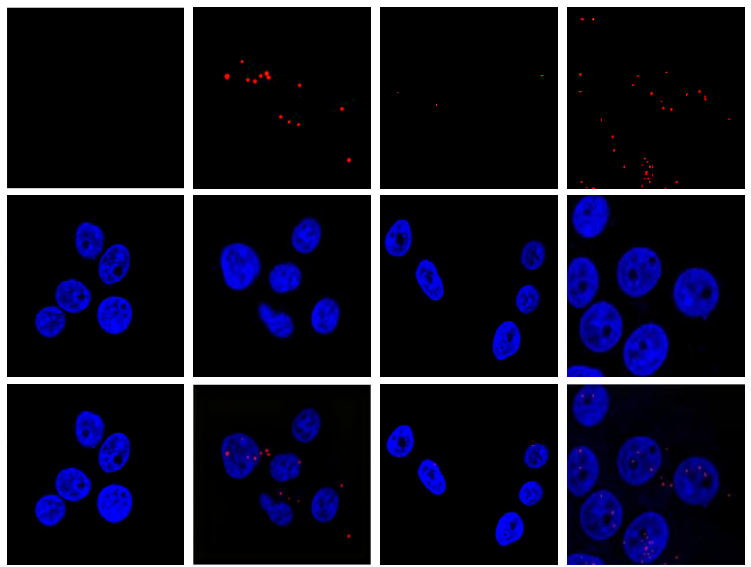


Fig.3K

* HT-29 : - / WT / YA / YD

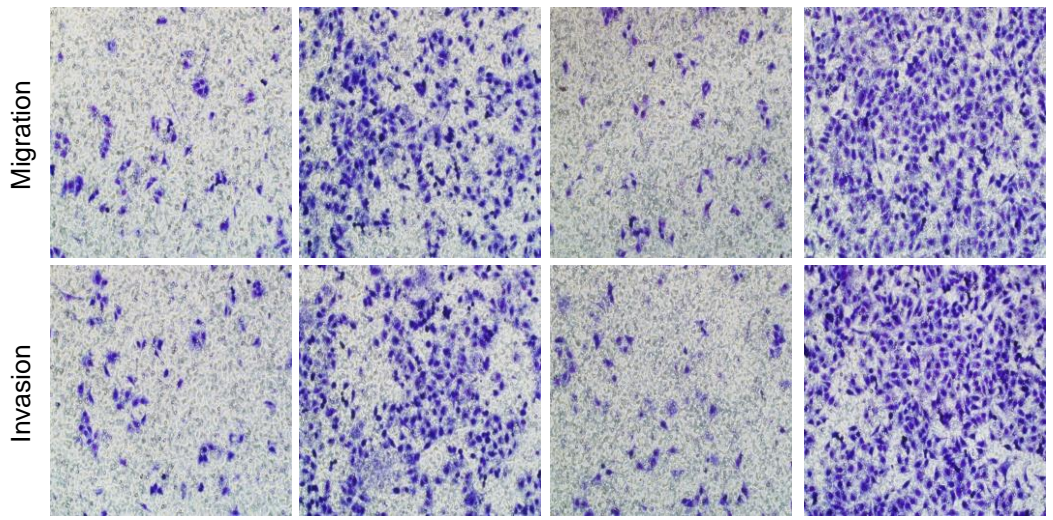


Fig.3M

* HT-29 : - / WT / YA / YD

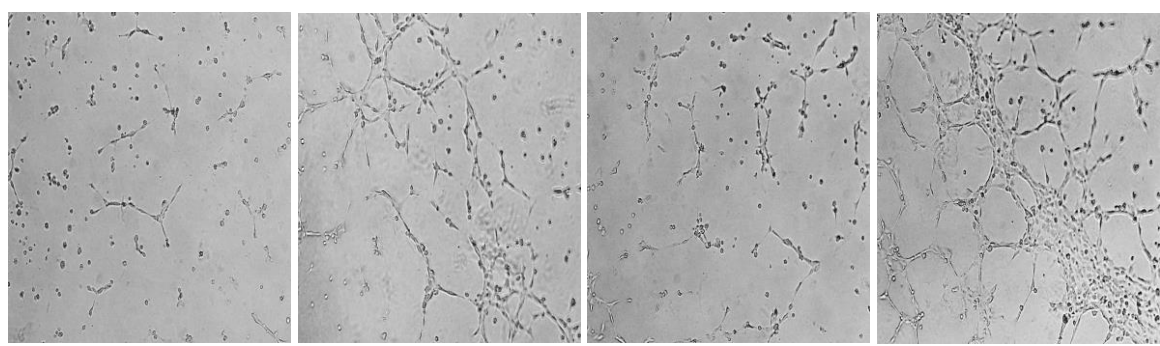


Fig.S3A -PLA

* 293T : - / WT / ΔECD / ΔICD

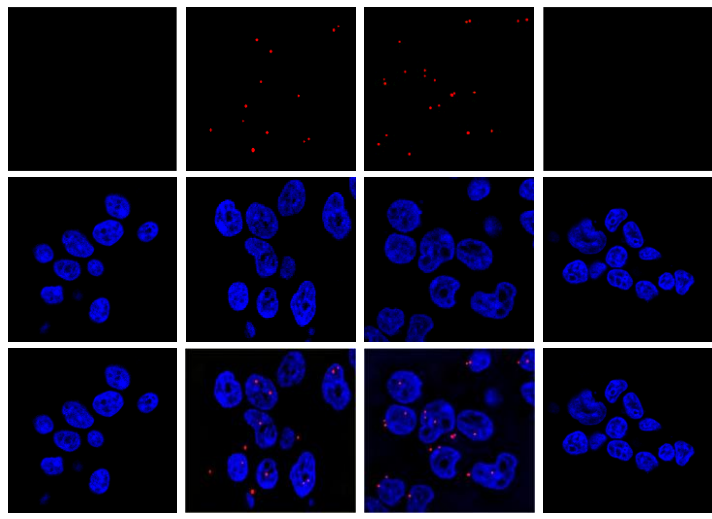


Fig.4J - PLA

* SW-480 : CTR / si-ICAM-1

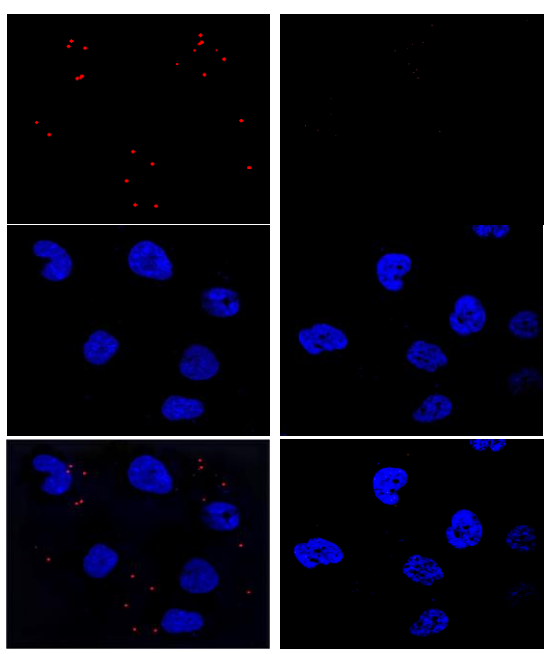


Fig.4K - ICC

* HT-29 : SRC / SRC+IC / SRC+MET / SRC+IC+MET

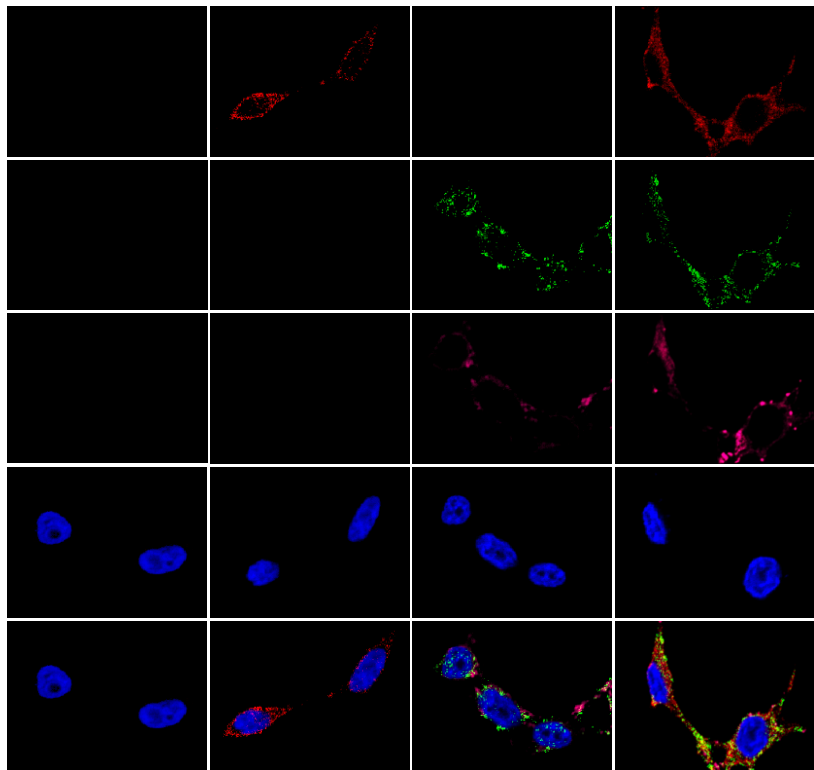


Fig.4L

* HT-29 : SRC / SRC+IC / SRC+MET / SRC+IC+MET

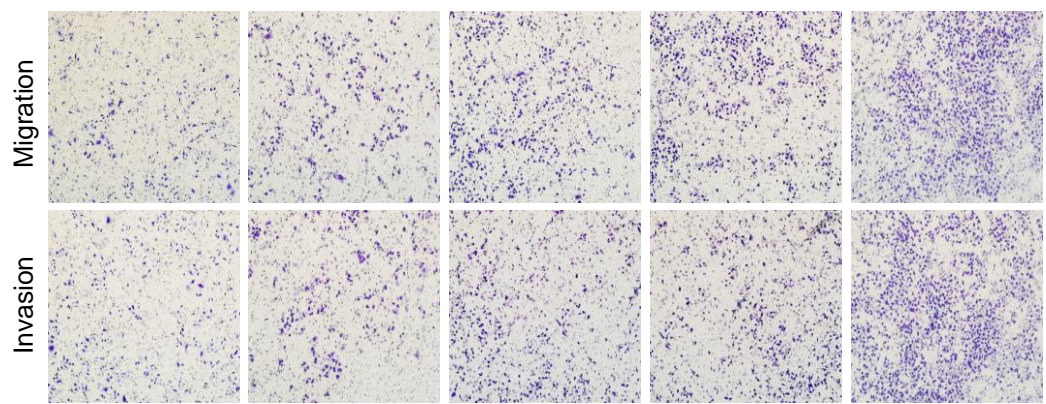


Fig.4M

* HT-29 : SRC / SRC+IC / SRC+MET / SRC+IC+MET

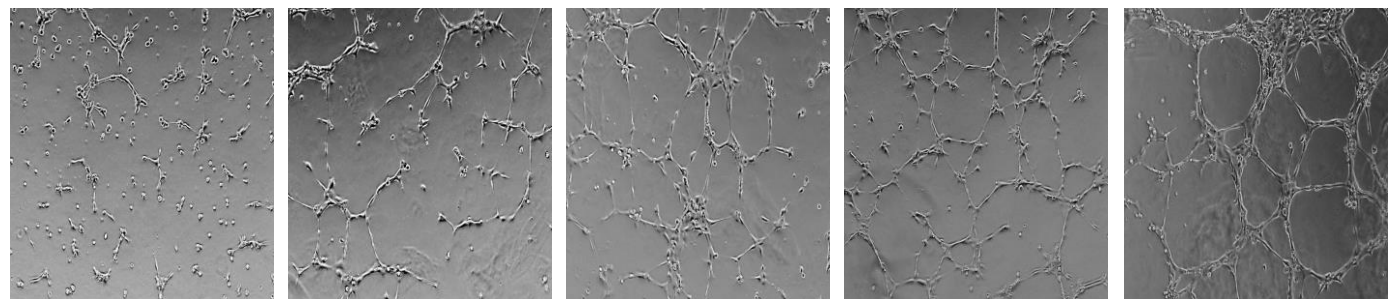


Fig.5D

* SW-480 : CTR / ICAM-1 ab

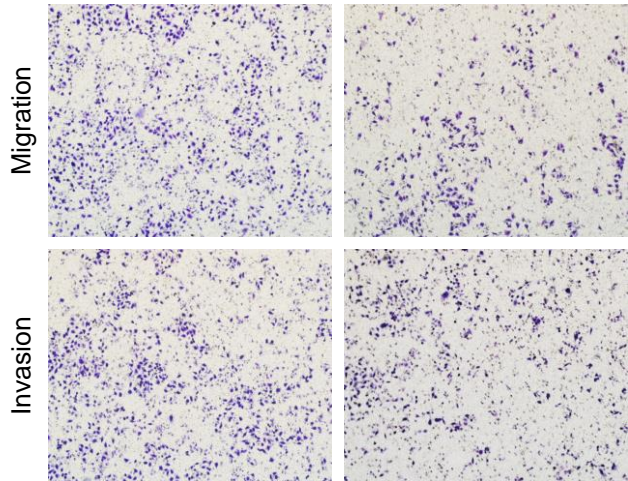


Fig.5E

* SW-480 : CTR / ICAM-1 ab

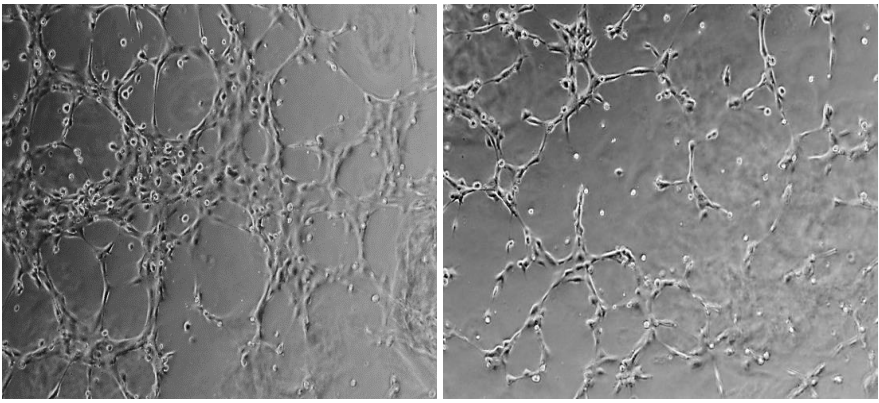


Fig.5H

* Xenograft : CTR / ICAM-1 ab

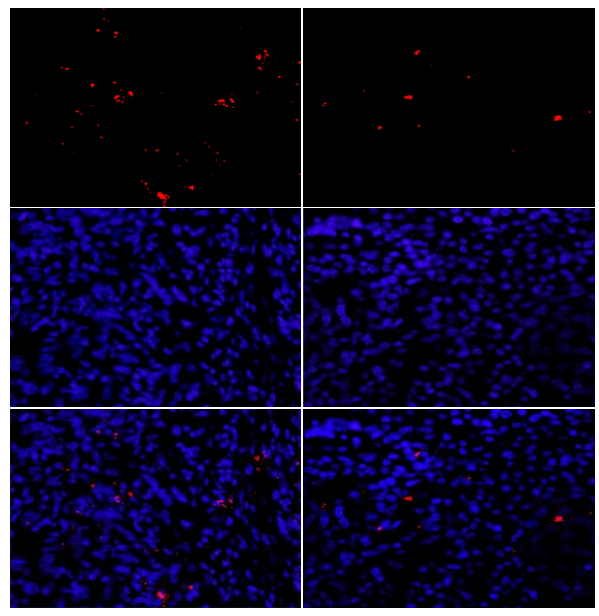


Fig.5I

* Xenograft : CTR / ICAM-1 ab

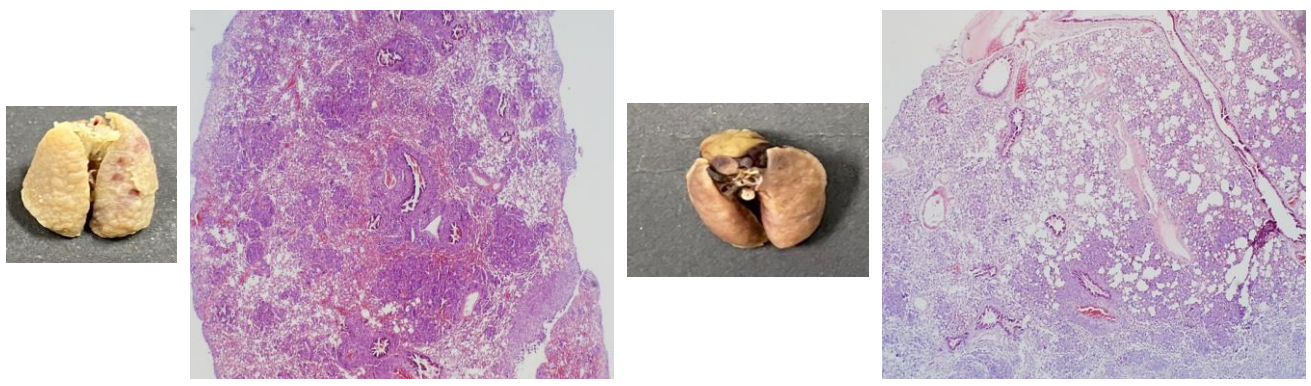


Fig.5K

* Xenograft : CTR / ICAM-1 ab

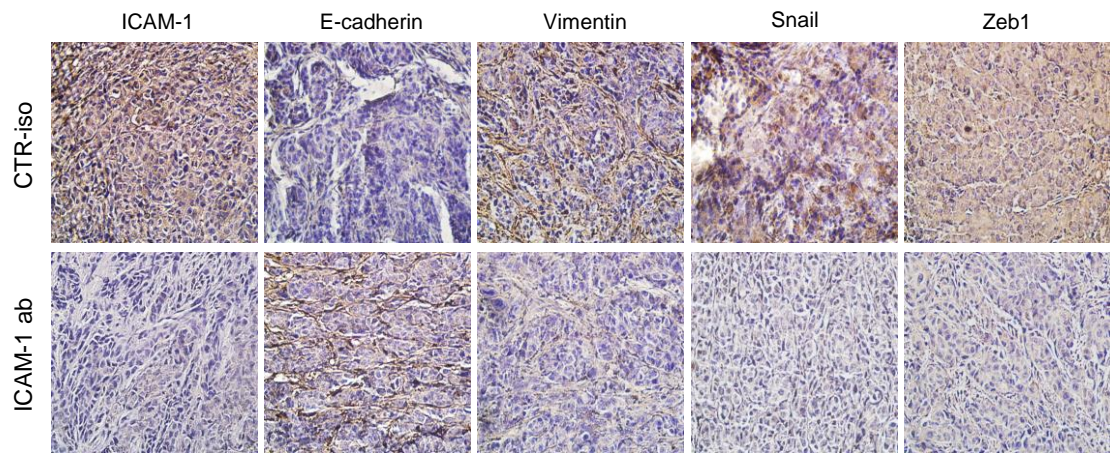


Fig.5N

* Xenograft : CTR / ICAM-1 ab

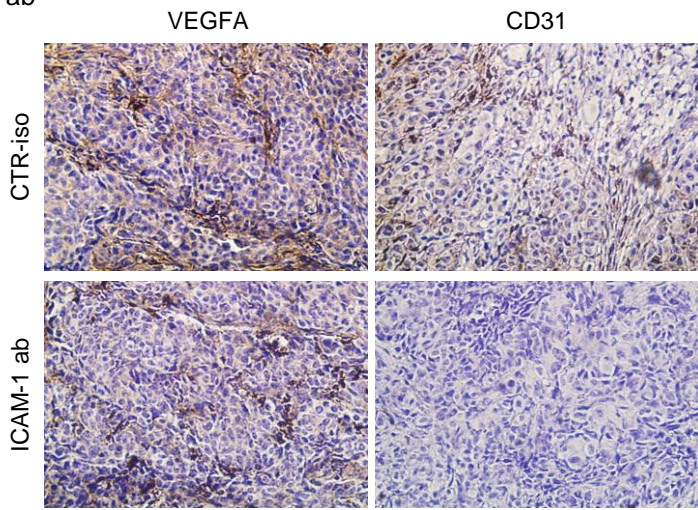


Fig.5P

* Xenograft : CTR / ICAM-1 ab

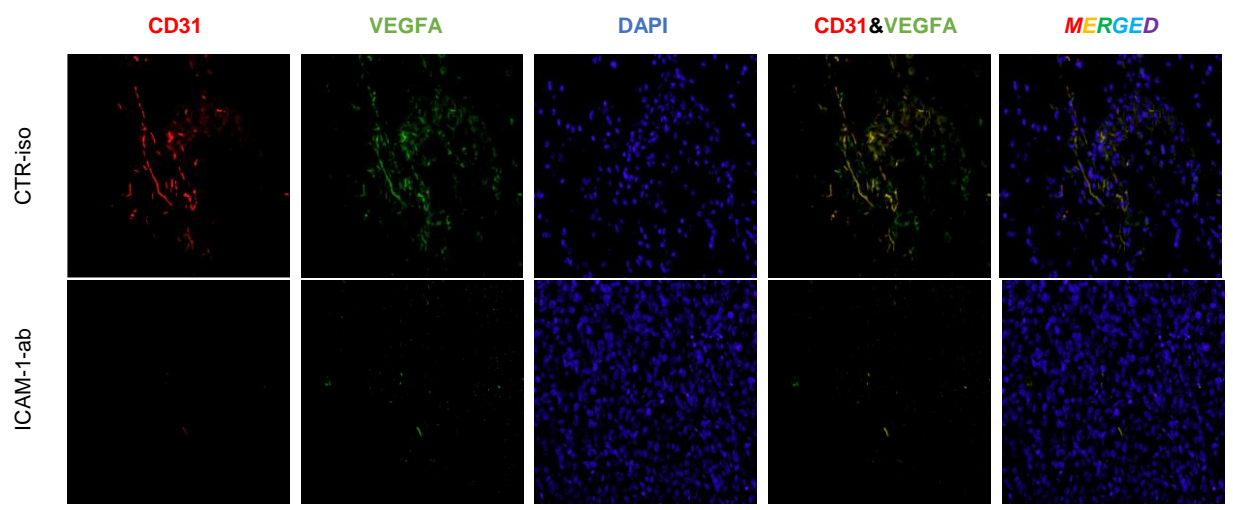


Fig.6B

* Patient tissue array – ICAM-1 staining :stage 1 /2 /3 /4

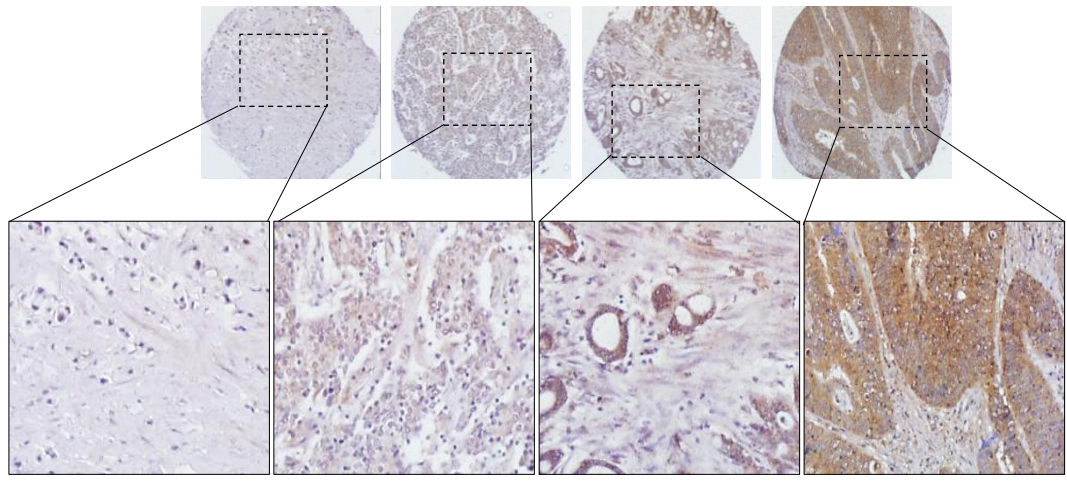


Fig.6E

* Patient tissue array – ICAM-1 & p-SRC staining

