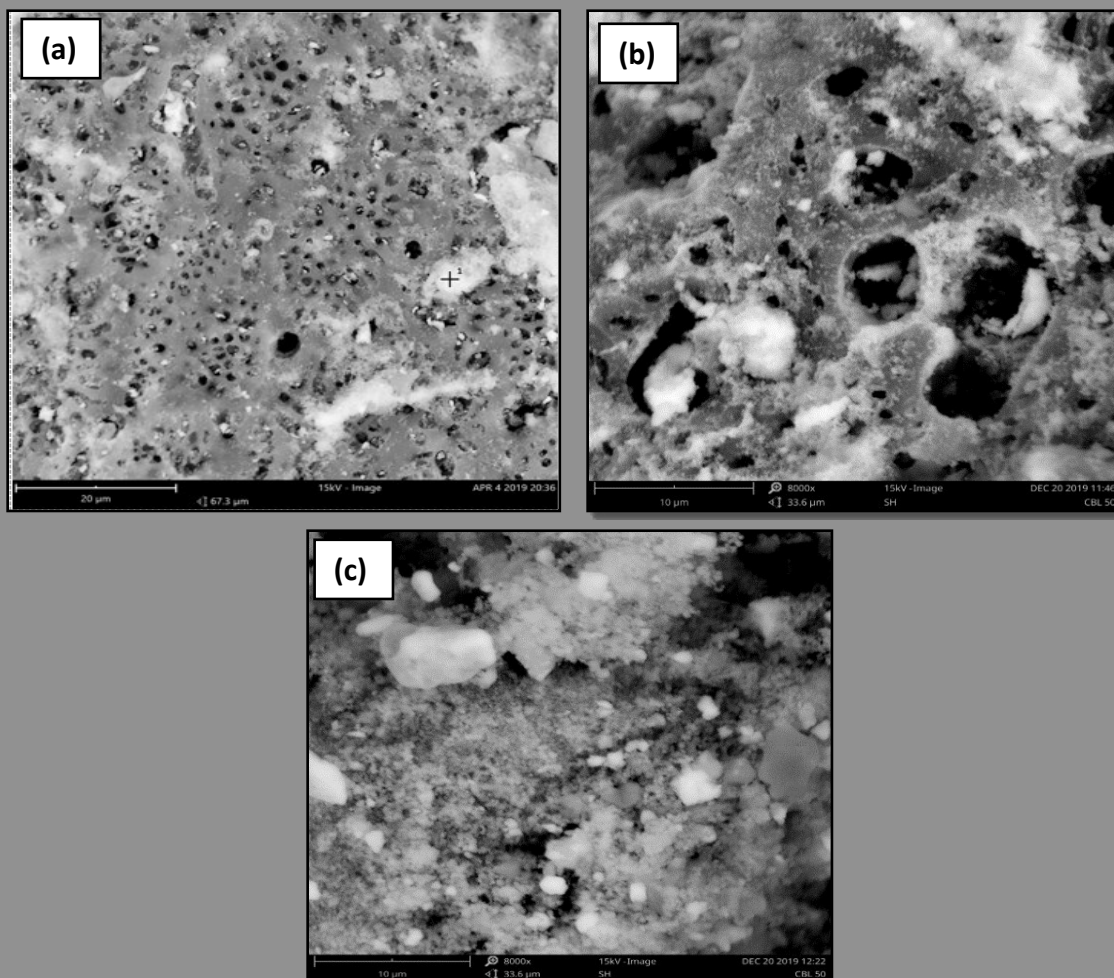
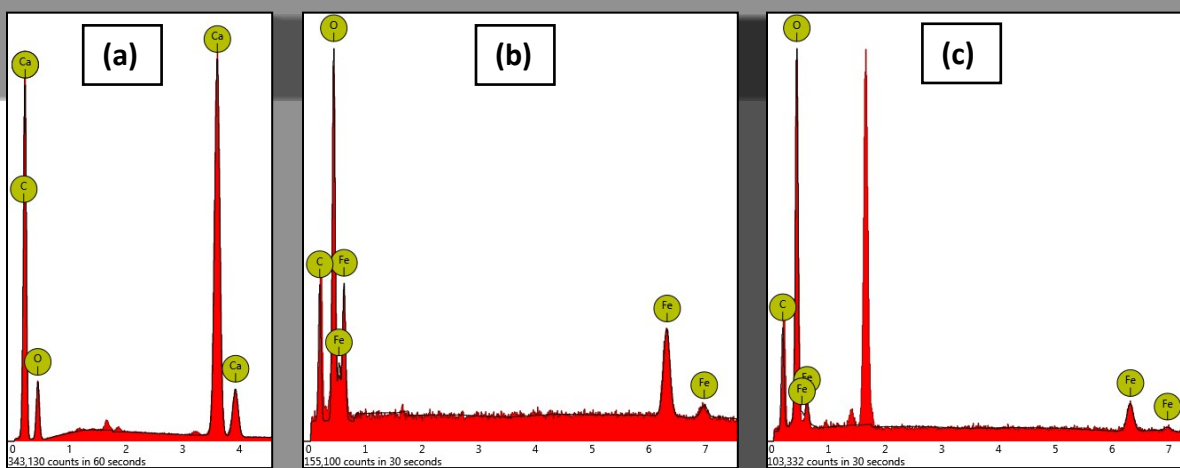


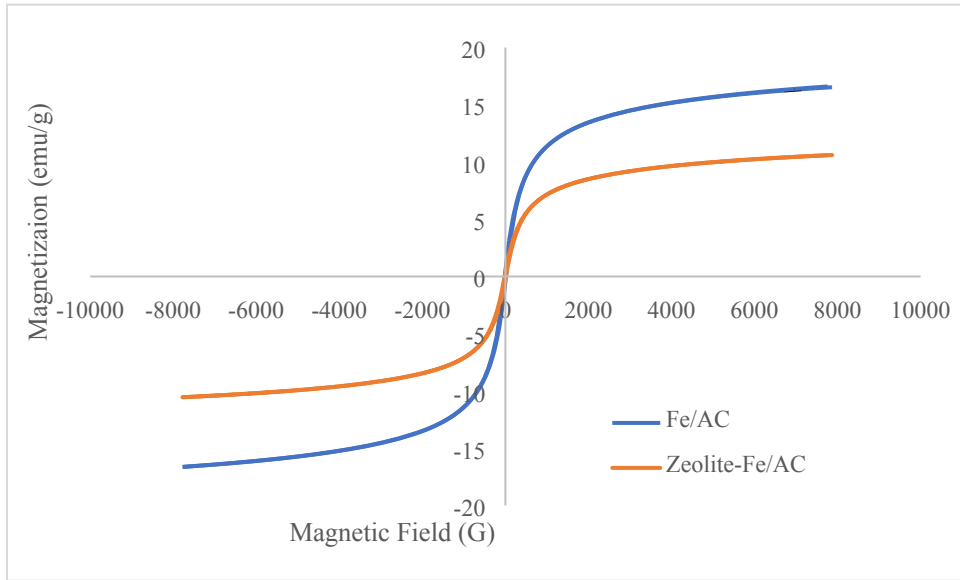
Supplementary Information



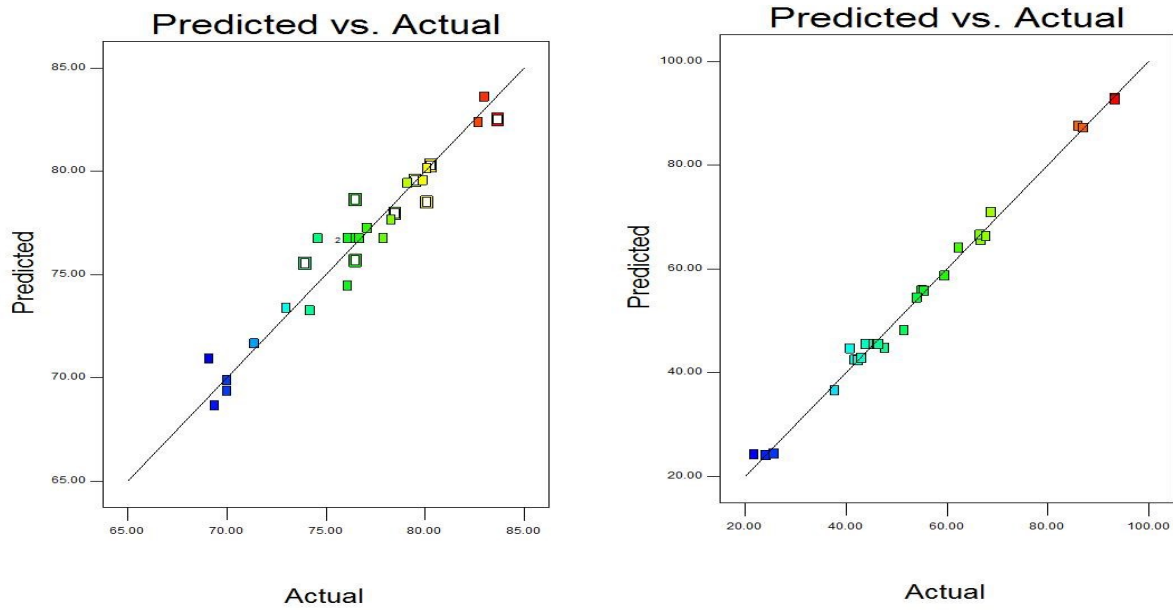
S1: Morphology of (a) AC, (b) Fe/AC and (c) Zeolite-Fe/AC



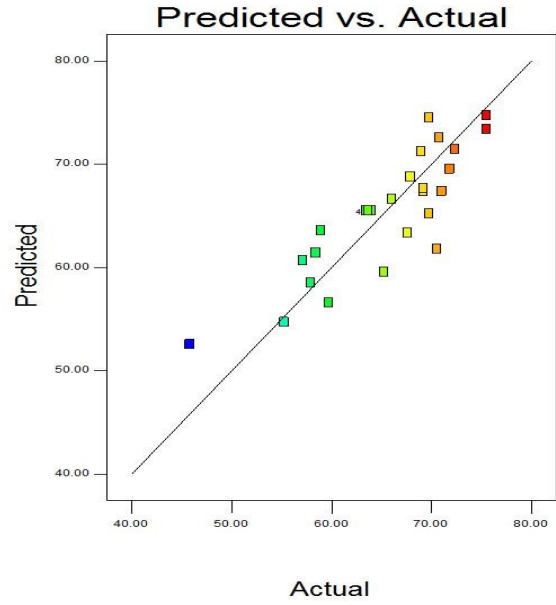
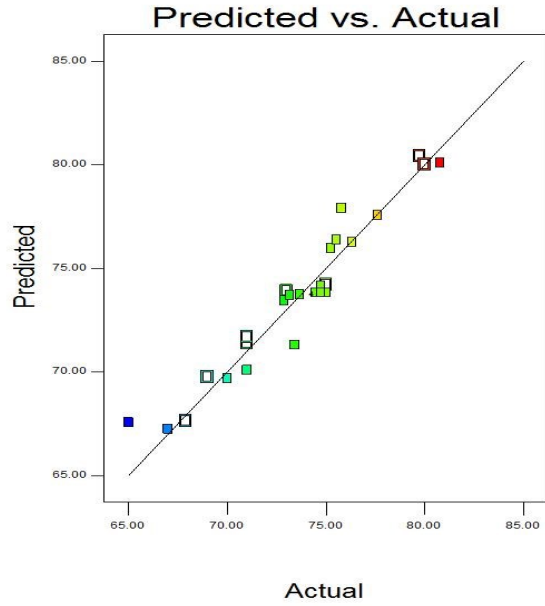
S2: EDX Analysis of (a) AC, (b) Fe/AC and (c) Zeolite-Fe/AC



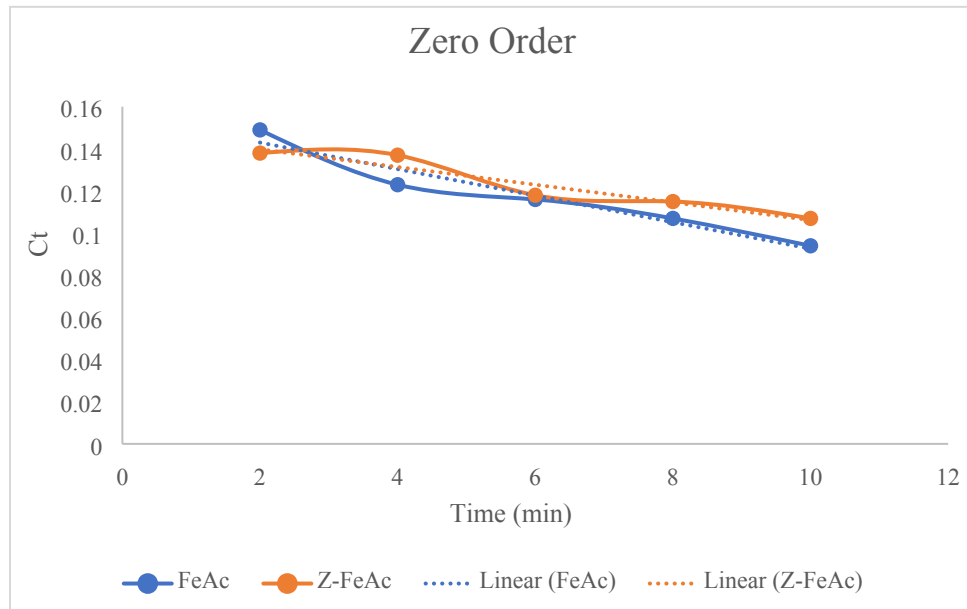
S3: Magnetization curves of Fe/AC and Zeolite-Fe/AC adsorbents

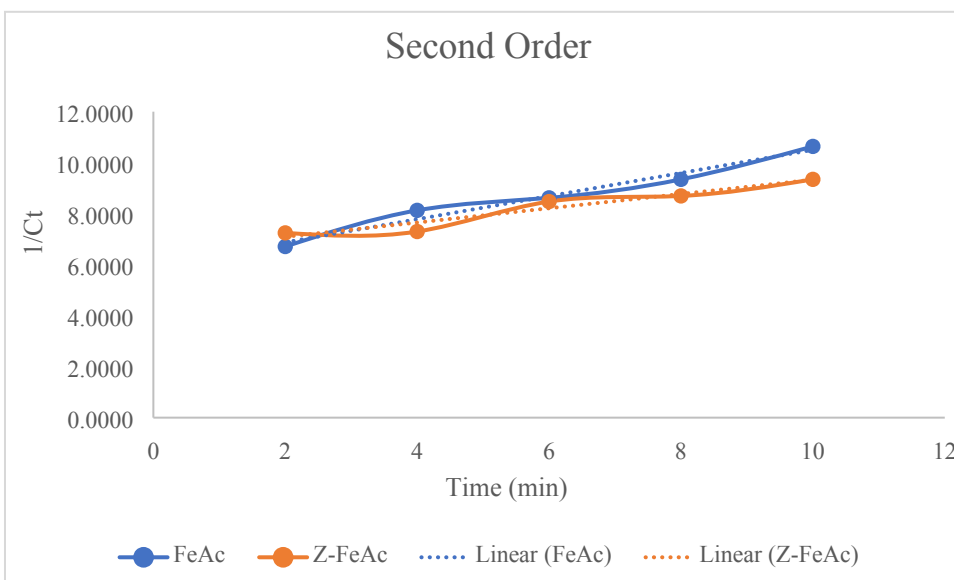
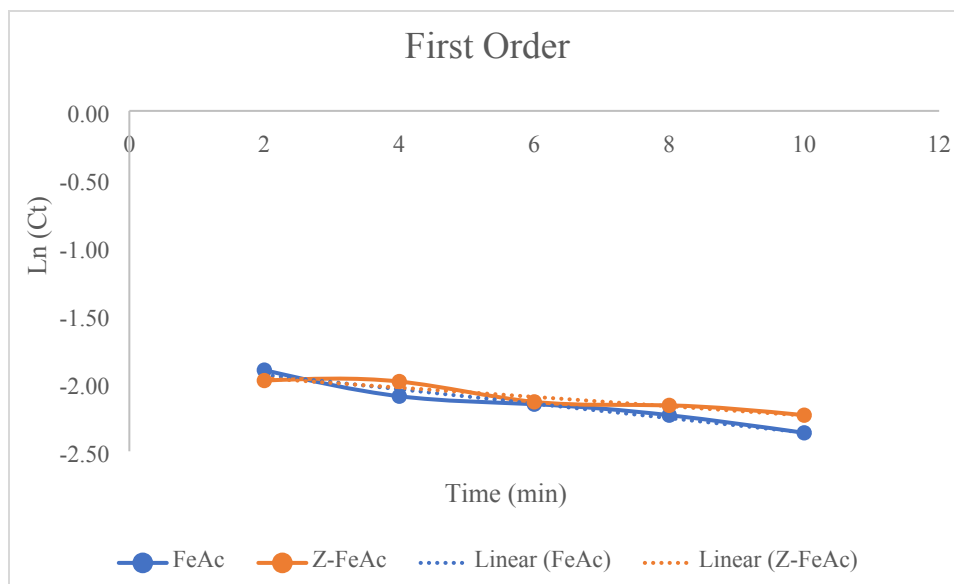


S4: Predicted versus Actual plot for Colour removal **(a)** Fe/AC **(b)** Zeolite-Fe/AC

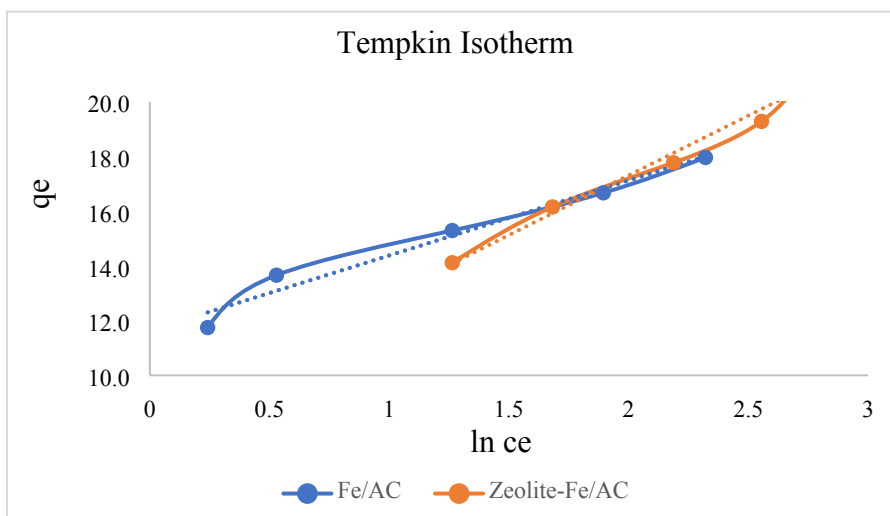
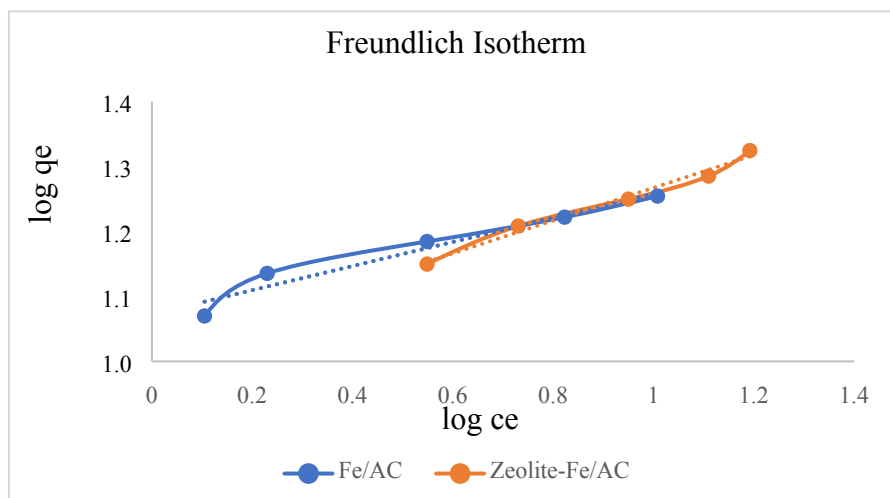
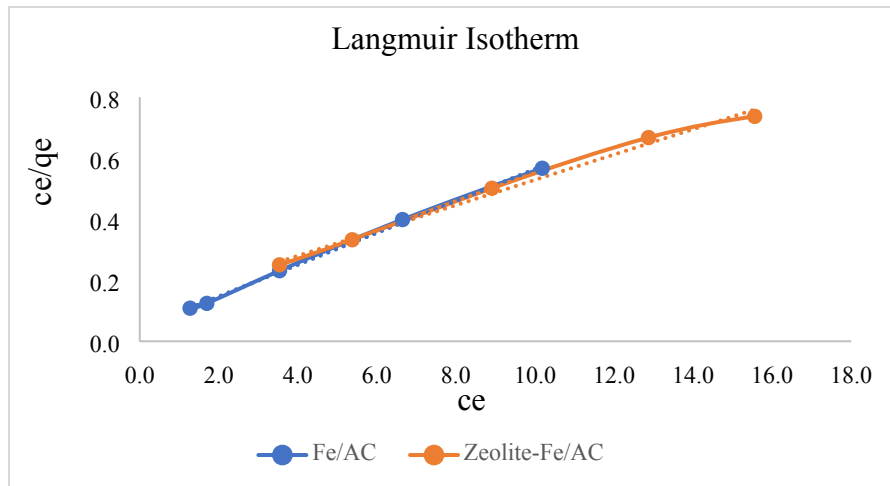


S5: Predicted versus Actual plot for COD removal (a) Fe/AC (b) Zeolite-Fe/AC

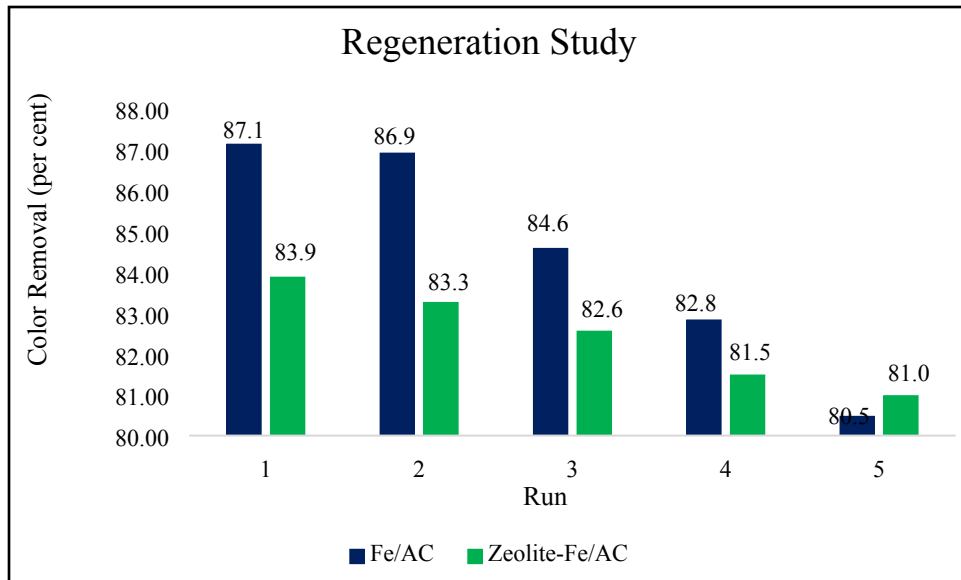




S6: (a) Zero-order, (b) First order and (c) Second-order reaction kinetic



S7: Isotherm model of Fe/AC and Zeolite-Fe/AC (a) Langmuir (b) Freundlich (c) Temkin



S8: Reusability of adsorbents