

SUPPLEMENTARY MATERIAL

SEM images of the lowest Ca^{2+} concentration test (1S), the dilution test from synthesis obtained by ARV-310 (2S) and the qualitative dispersion test (3S) are reported.

Figure 2S Dilution test 1:1000 of synthesis using planetary mixer setup (Figure 6(c)).

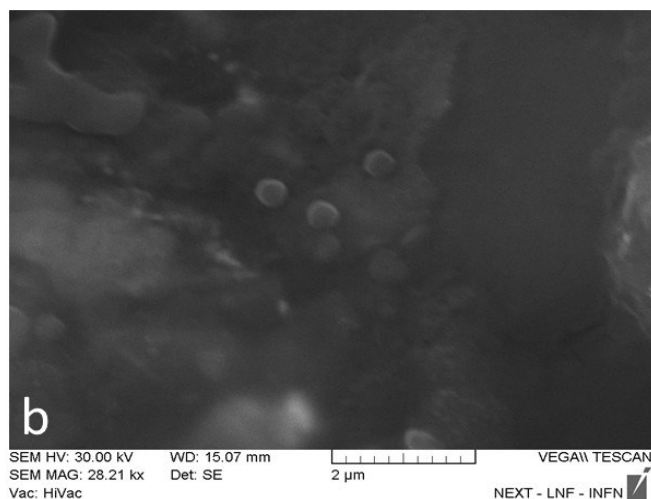
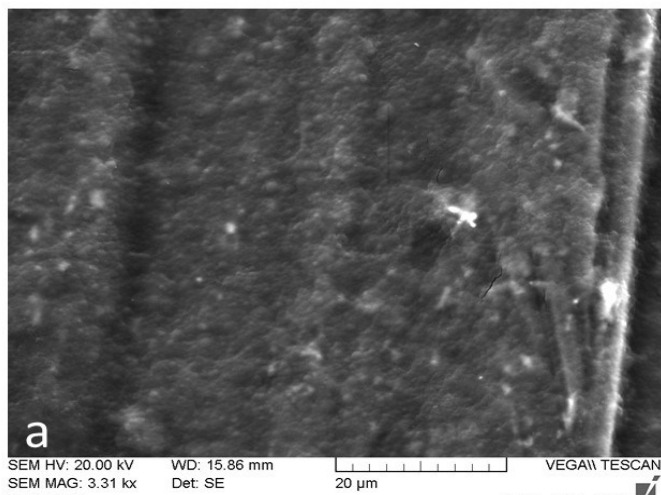


Figure 1S in (a) lower calcium concentration (ratio 3:1 alginate:Ca²⁺) at a surfactant concentration of $5 \cdot 10^{-3}$ M and in (b) 1:1000 dilution of (a).

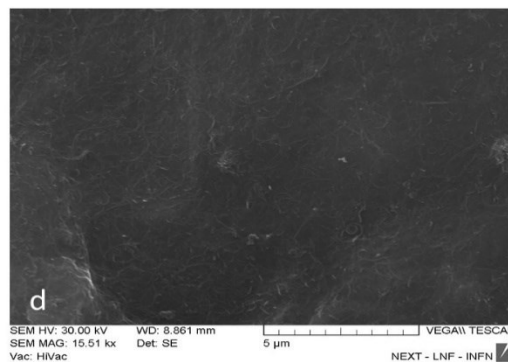
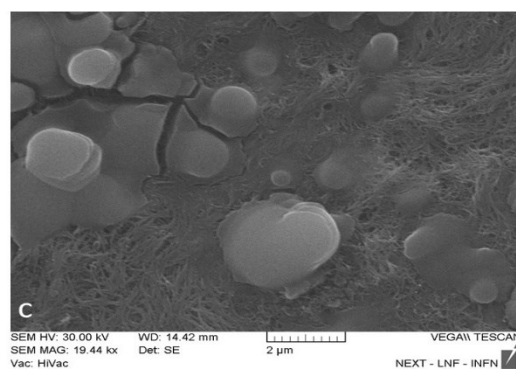
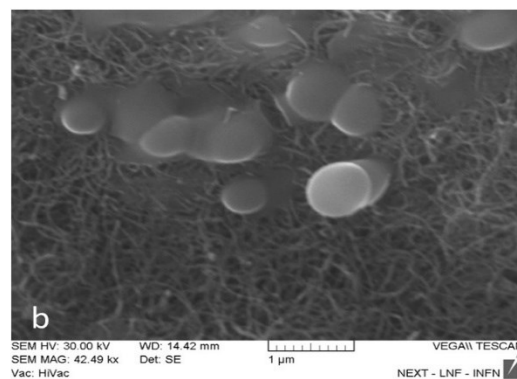
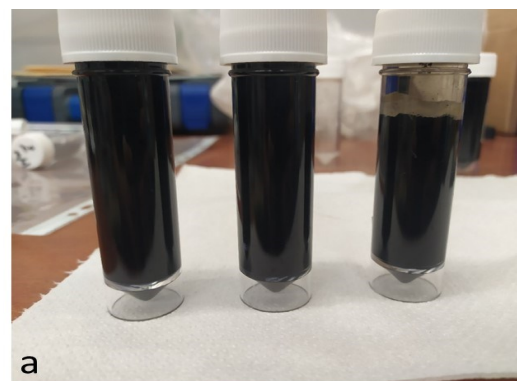
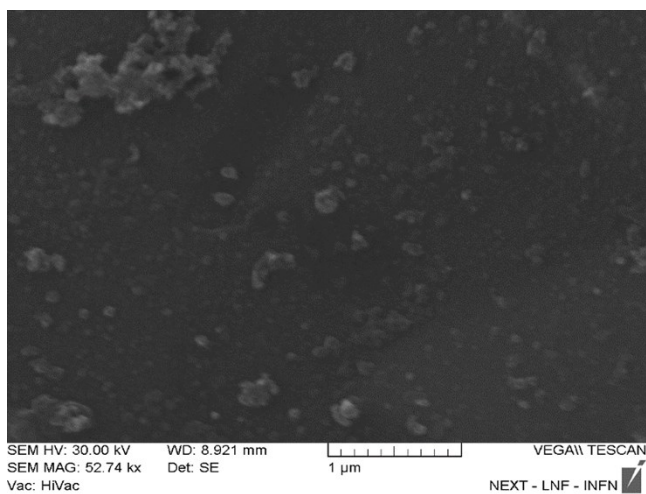


Figure 3S a) Kinetic stability of solutions at 30 days. of samples having from left 10:1, 1:1 and 1:10 ratio, respectively; b) SEM image of sample having 10:1 ratio. c) SEM image of sample having 1:1 ratio; d) SEM image of sample having 1:10 ratio.