

# Supplementary Fig. 1

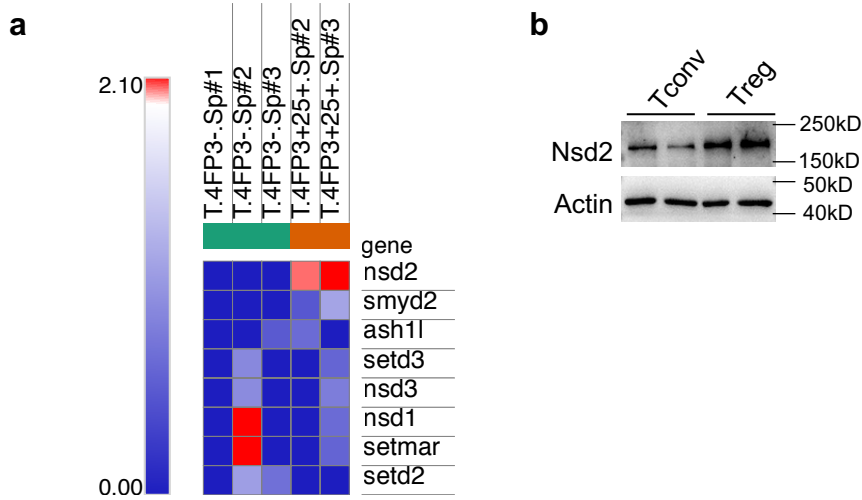


Fig. S1. Nsd2 is expressed in Treg cells with higher level than Tconv cells. **a**, Heatmap depicting relative mRNA expression of eight known histone methyltransferases in CD4<sup>+</sup> Tconv and Treg cells. Data were from public microarray analysis (GSE15907). **b**, Expression of Nsd2 proteins in sorted Tconv and Treg cells. Data are representative of two experiments.

# Supplementary Fig. 2

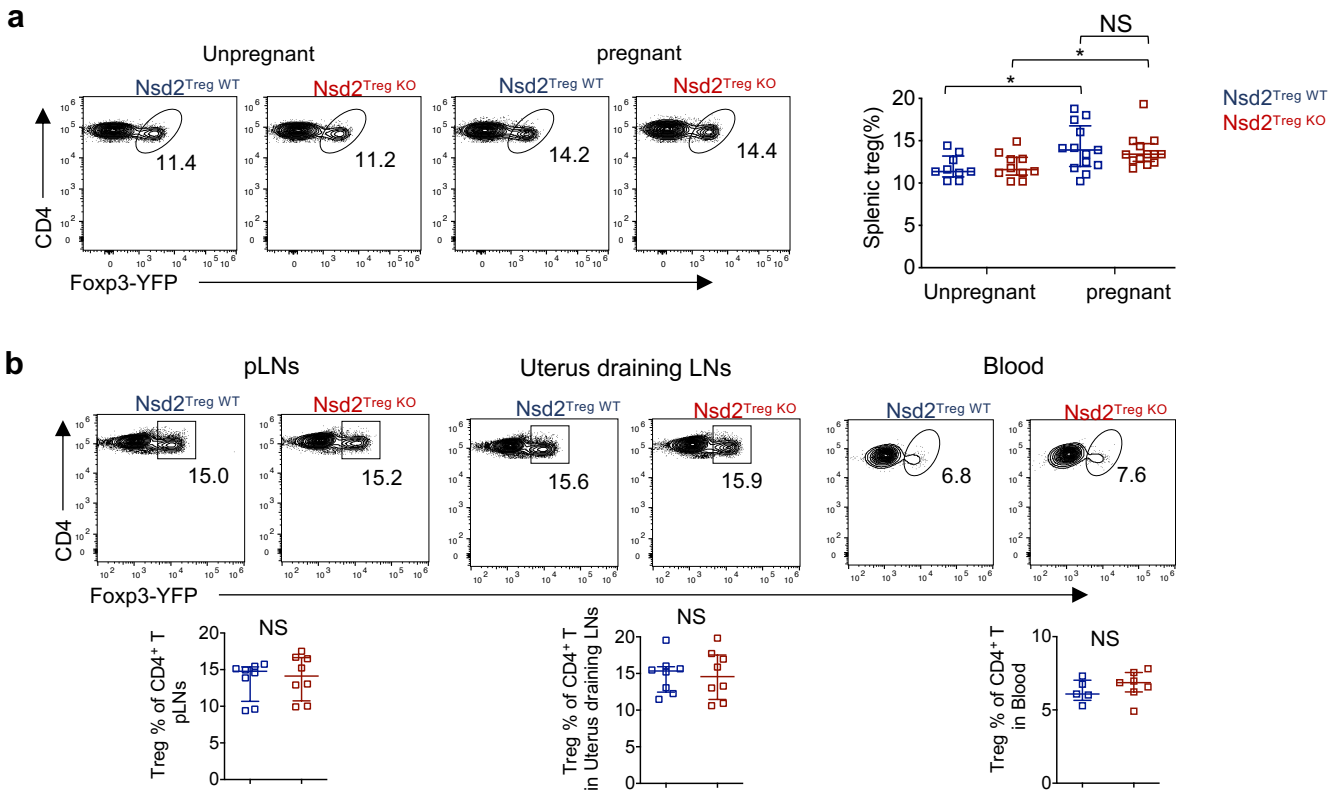


Fig S2. *Nsd2* is dispensable for Treg expansion during pregnancy. **a**, Flow cytometric analysis of the Treg percentage in the spleen from unpregnant and pregnant (E14.5) female mice of genotypes as indicated. **b**, Flow cytometric analysis of the Treg percentage in peripheral lymph nodes (pLNs, pooled from inguinal and axillary LNs), uterus draining LNs and blood from E14.5 pregnant female mice of genotypes as indicated. \* $P \leq 0.05$ ; NS, not significant. Data were pooled from two or three experiments.

# Supplementary Fig. 3

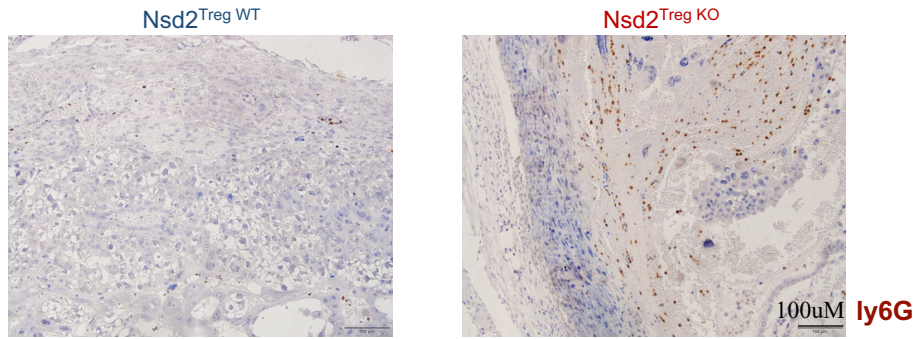


Fig. S3. Neutrophil infiltration in the decidua from  $Nsd2^{\text{Treg KO}}$  mice. Immunohistochemical staining for neutrophils with Ly6G antibody (Brown) in decidua from WT or  $Nsd2^{\text{Treg KO}}$  mice. Data are representative of two independent experiments.