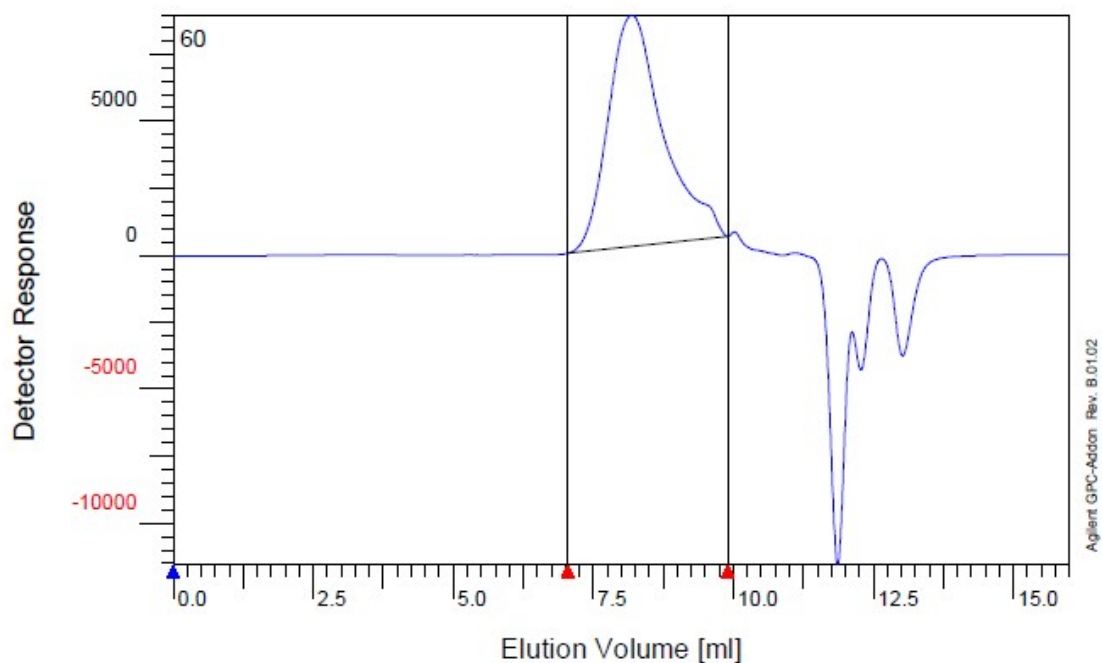
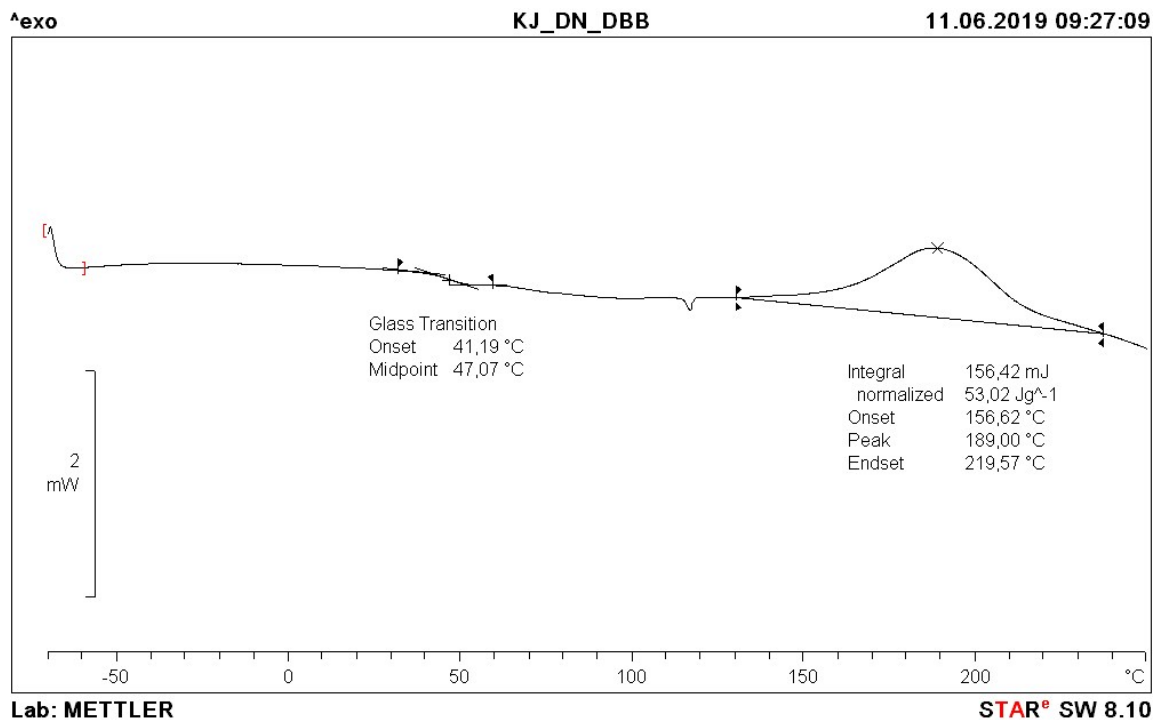


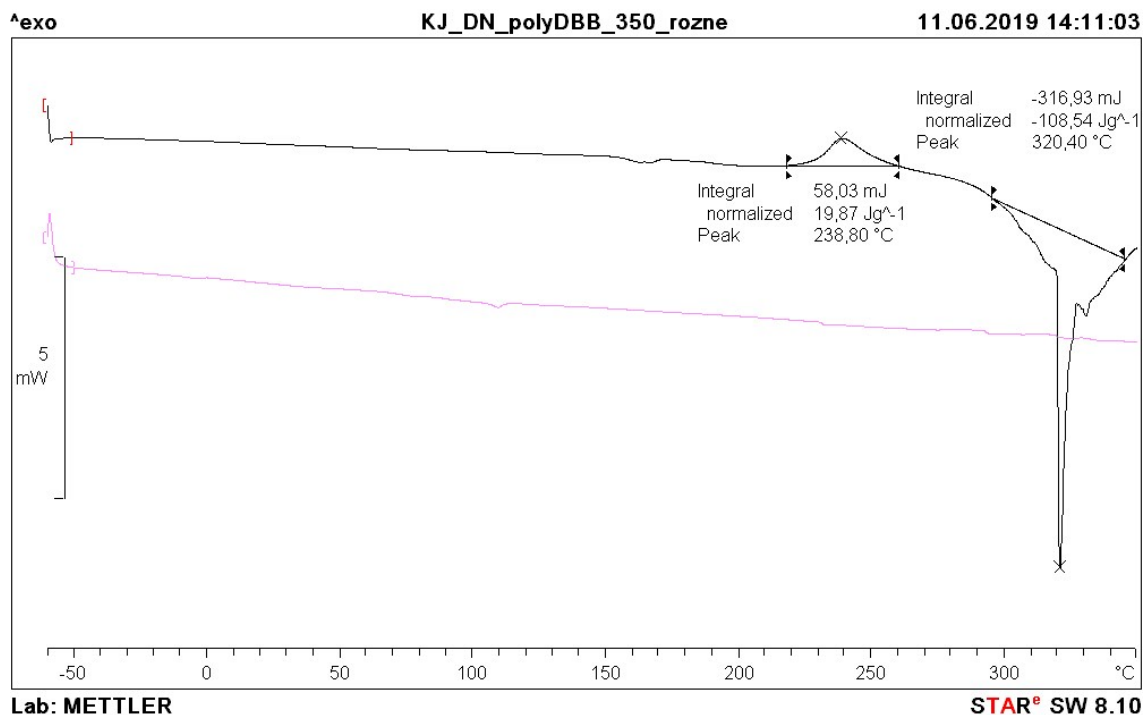
Injection Date :	09-Mar-18, 12:41:39		
Calibration File :	C:\Chem32\GPC\calib\Kalibracja_06_03_2018.CAL		
Calibration Date :	Tuesday 06-03-18 14:33:40		
Baseline from :	8.803 min	Baseline to :	12.367 min
Integration from :	8.803 min	Integration to :	12.367 min
MHK - A (Cal.):	0.000000E+0	MHK - K (Cal.):	1.000000E+0 mg/g
Eluent :	CH <sub>2</sub> Cl <sub>2</sub>	Flowrate :	0.800 ml/min
Concentration :	1.000 g/l	Inject volume :	100.000 ul
Detector 1 :	RID1A, Refractive Index Signal	Delay volume :	0.000 ml
Operator :	SYSTEM	Acquisition interval :	0.430 sec



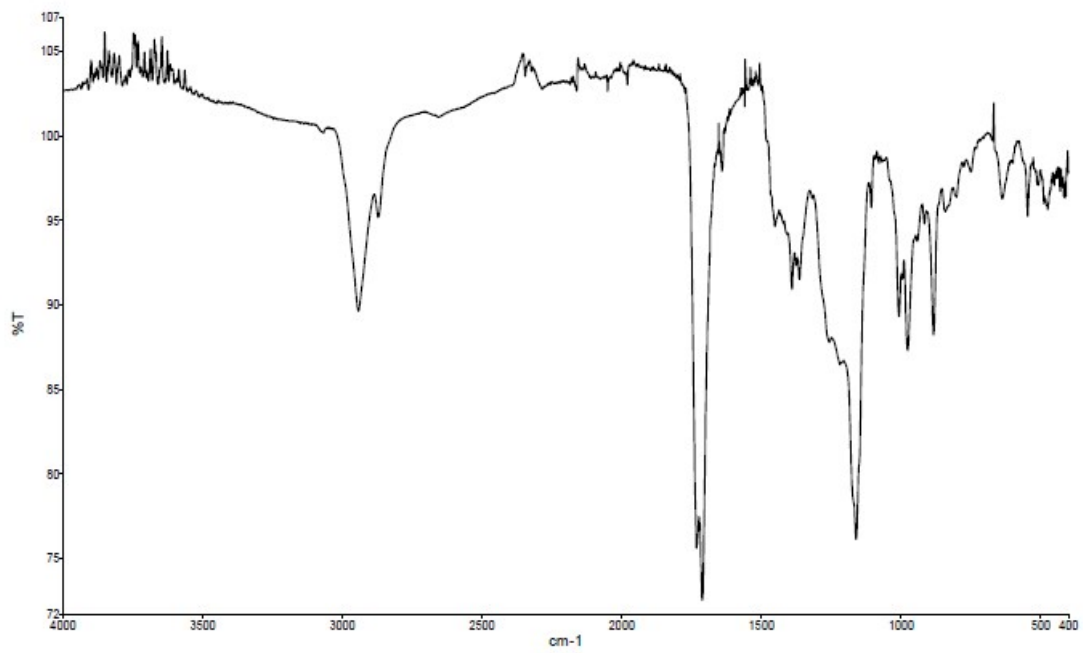
ESI - Figure S1. GPC chromatogram of polyDBB



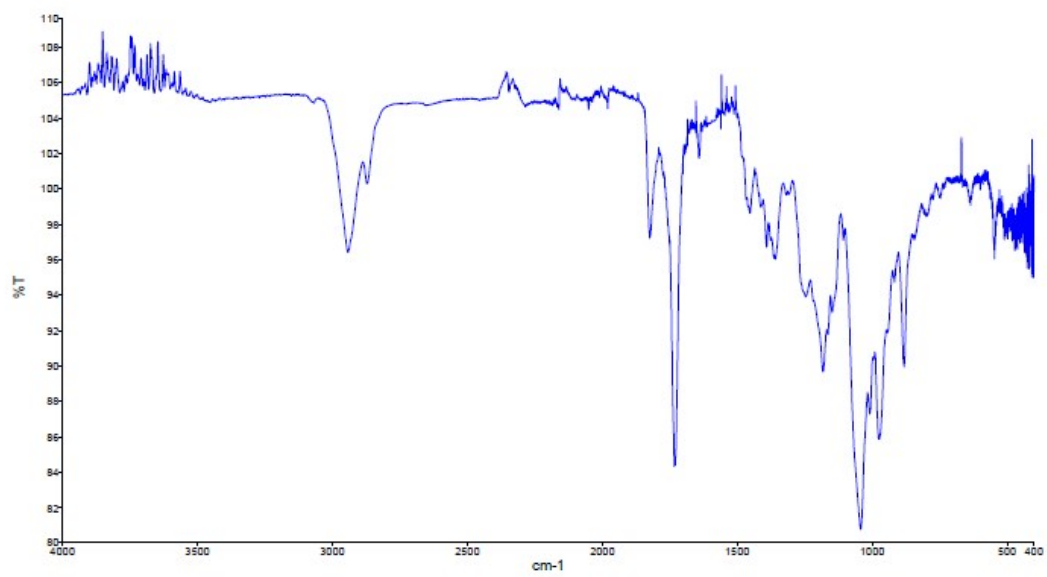
ESI - Figure S2. DSC thermogram of DBB



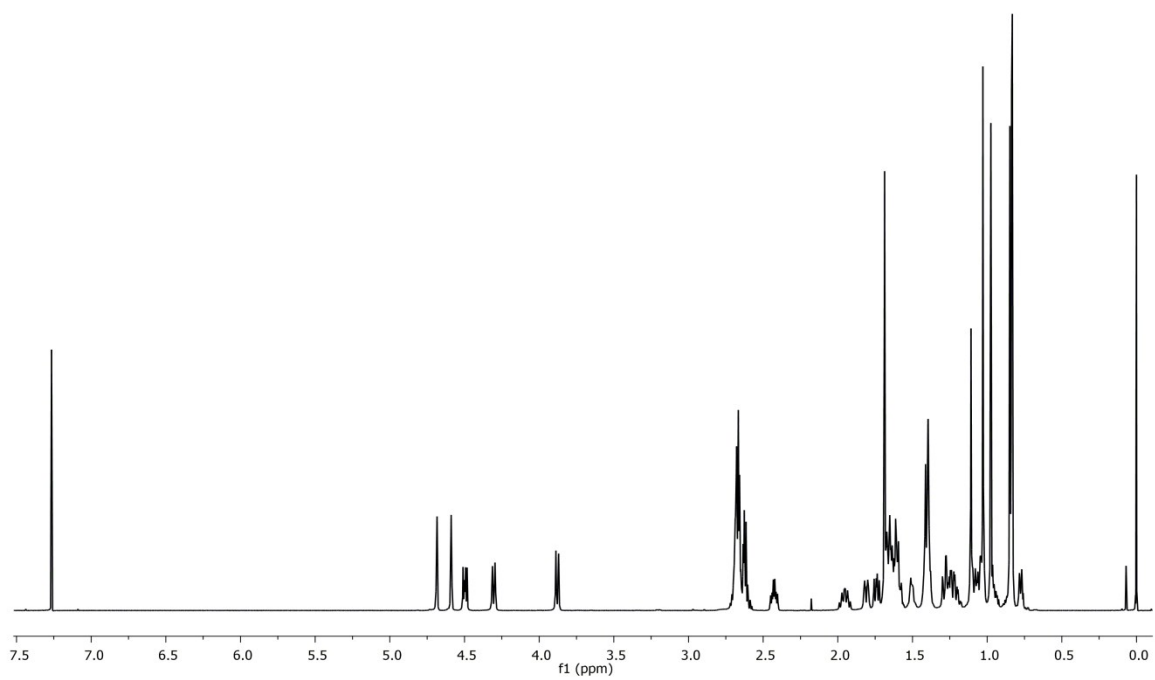
ESI - Figure S3. DSC thermograms of polyDBB (first and second run)



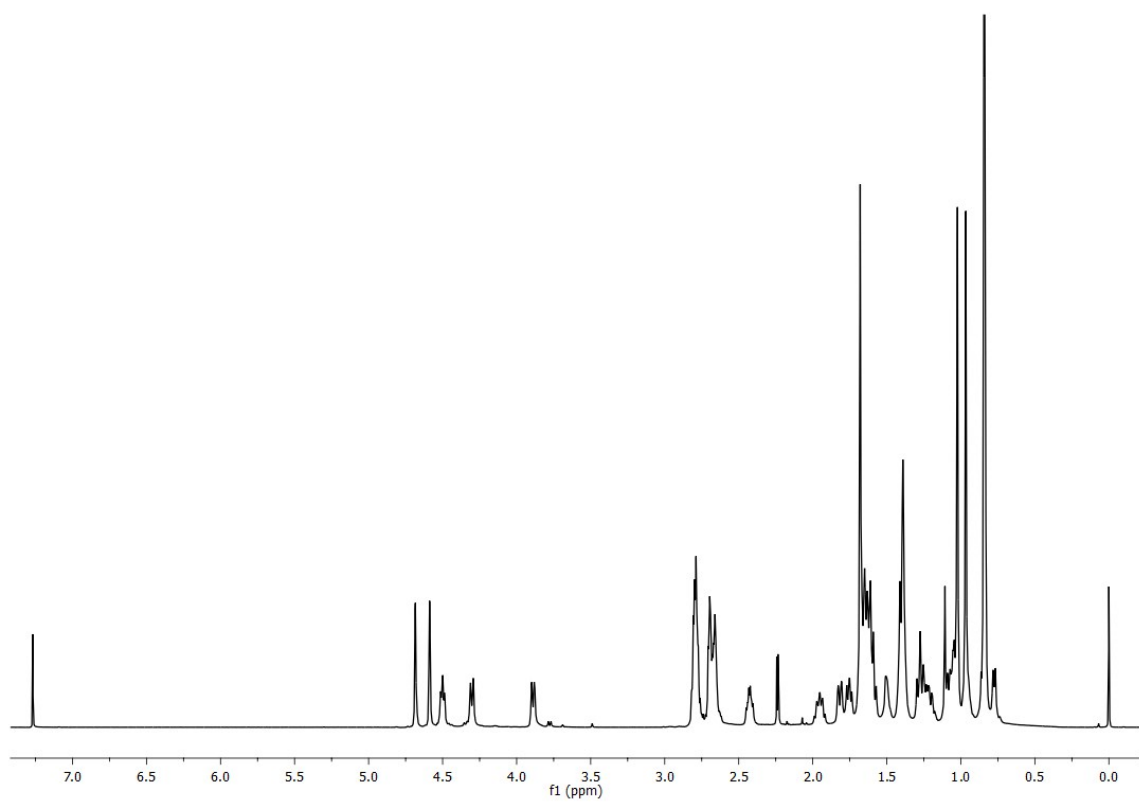
ESI - Figure S4. IR spectrum of DBB



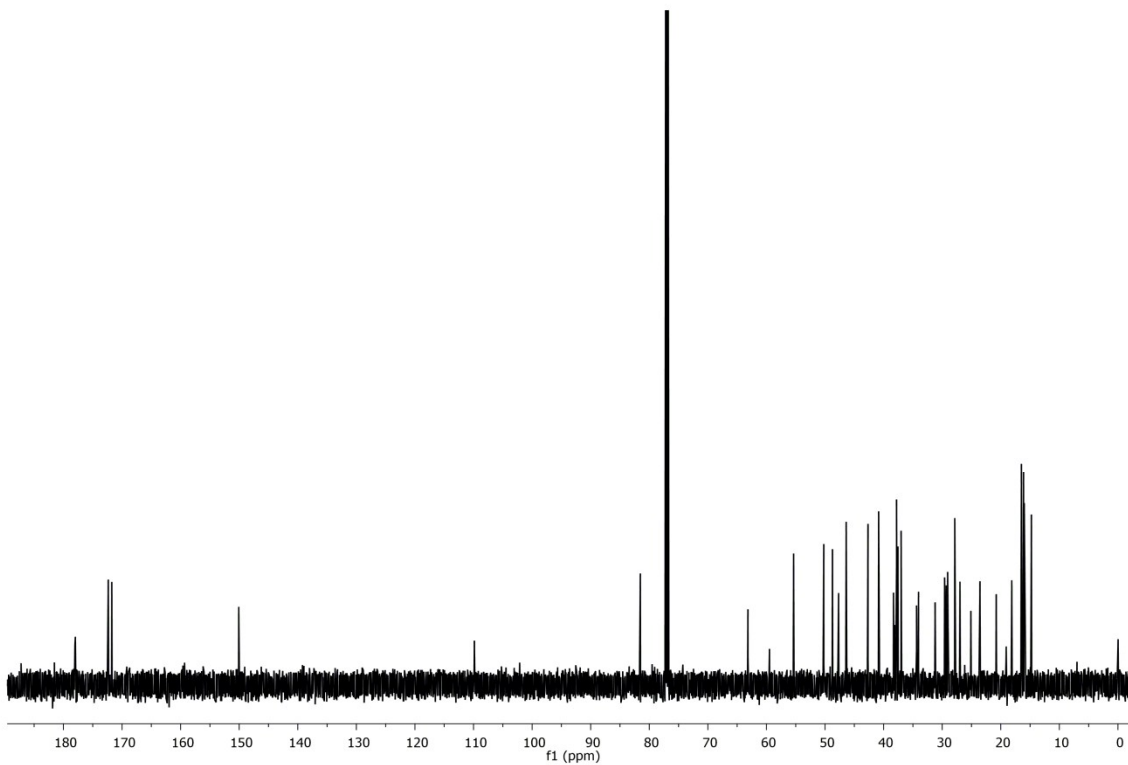
ESI - Figure S5. IR spectrum of polyDBB



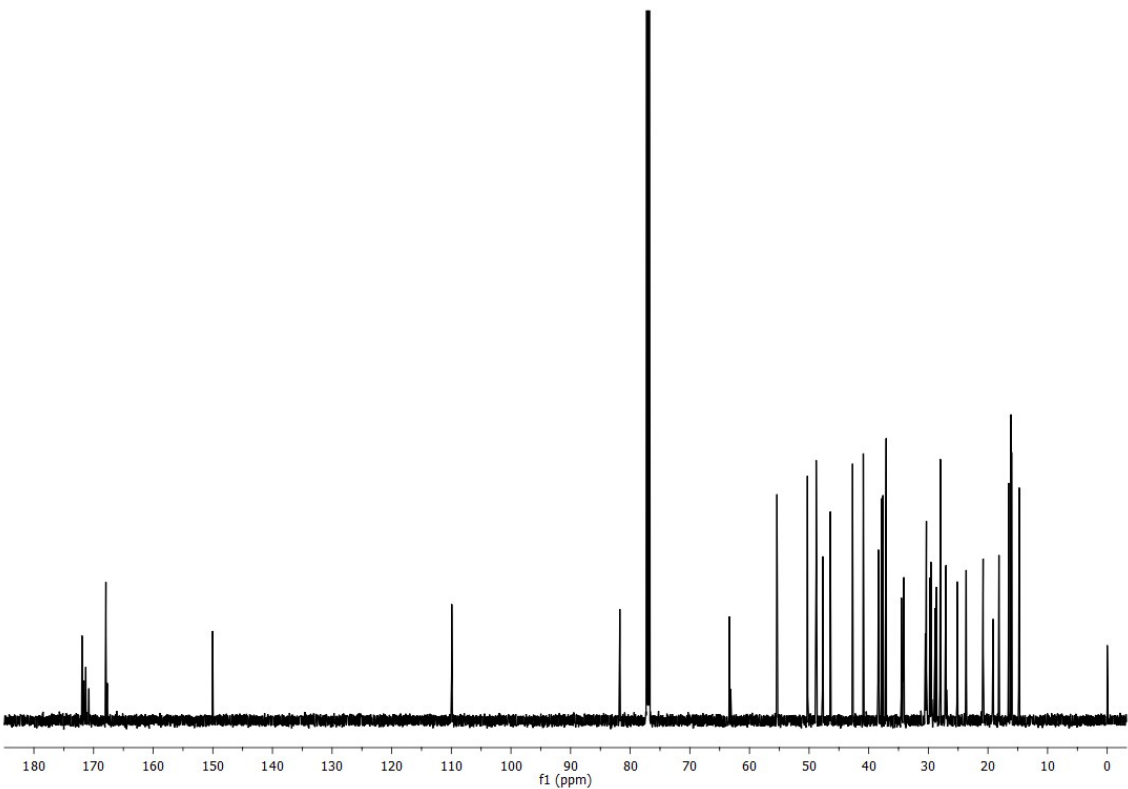
ESI – Figure S6. <sup>1</sup>H NMR spectrum of DBB



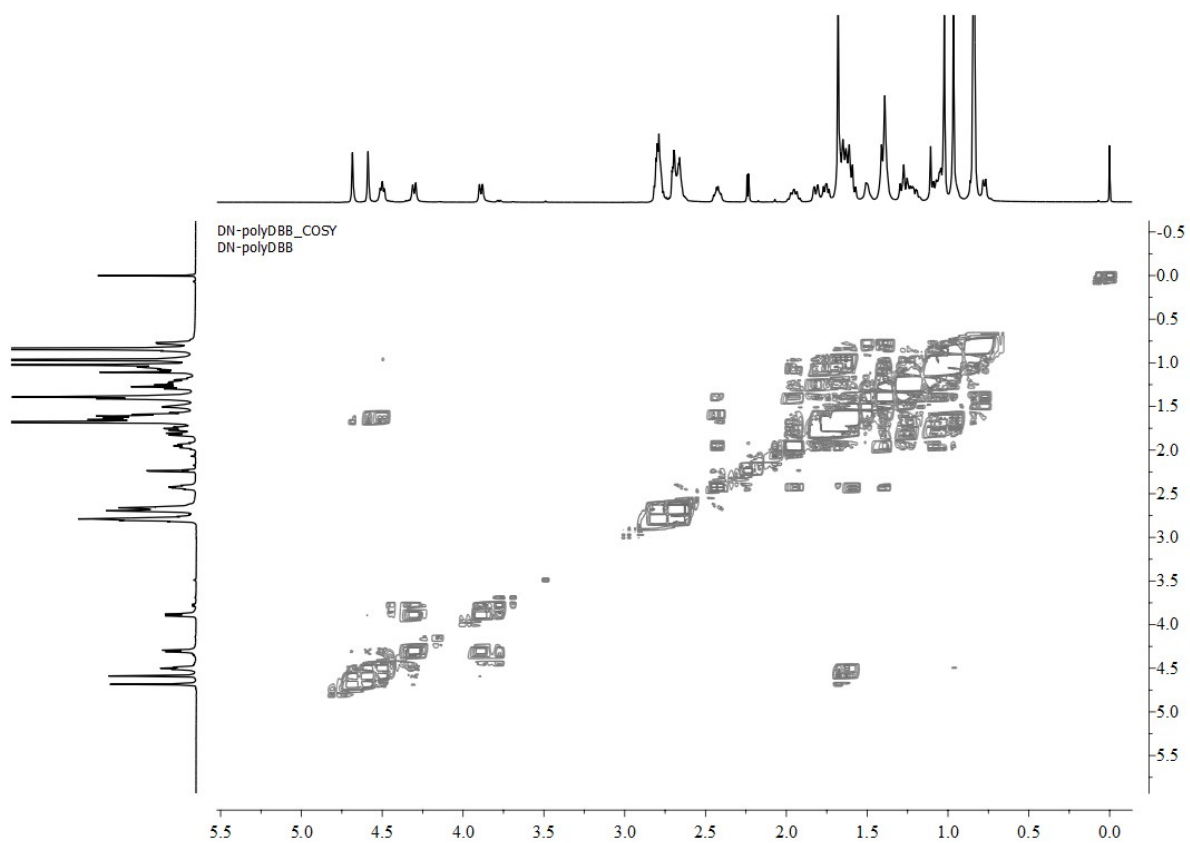
ESI - Figure S7. <sup>1</sup>H NMR spectrum of polyDBB



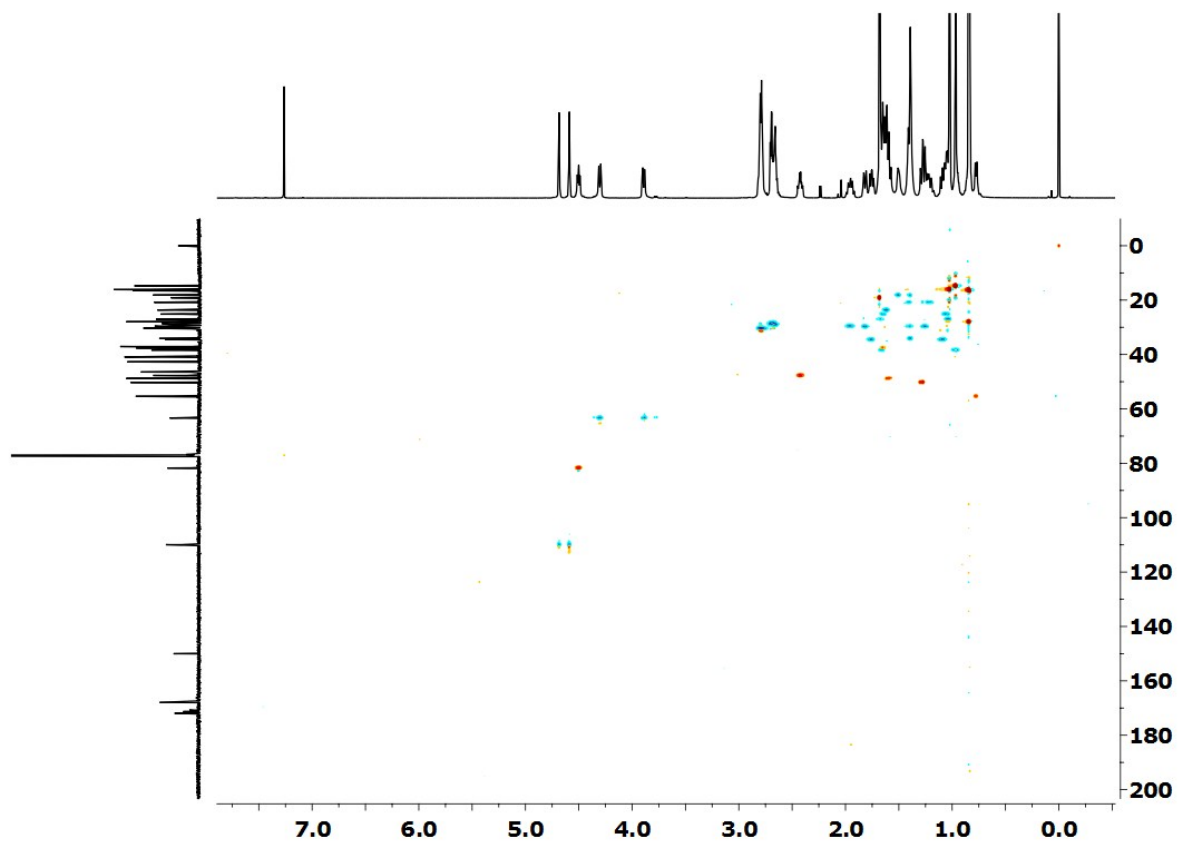
ESI - Figure S8.  $^{13}\text{C}$  NMR spectrum of DBB



ESI - Figure S9.  $^{13}\text{C}$  NMR spectrum of polyDBB



ESI – Figure S10. COSY NMR spectrum of polyDBB



ESI- Figure S11. HSQC NMR spectrum of polyDBB