

Supporting information

Transforming Lignin into Porous Graphene via Direct Laser Writing for Solid-State Supercapacitors

Faisal Mahmood ^{a,d}, Chi Zhang ^b, Yunchao Xie ^b, David Stalla ^c, Jian Lin ^b, Caixia Wan ^{a,*}

^a Department of Biomedical, Biological, and Chemical Engineering, University of Missouri, Columbia 65211, USA

^b Department of Mechanical and Aerospace Engineering, University of Missouri, Columbia 65211, USA

^c Electron Microscopy Core, University of Missouri, Columbia 65211, USA

^d Department of Energy Systems Engineering, University of Agriculture Faisalabad, Faisalabad 38000, Pakistan

*Corresponding author: Phone: +1 573 884 7882; Fax: +1 573 884 5650; E-mail: wanca@missouri.edu

Contents

Fig. S1 (a) SEM image of porous LIG-80 embedded on a lignin/PEO film, scale bar is 2 μm . (b) A higher magnification of SEM image of the white square region in (a), showing a beehive-like porous structure, scale bar is 500 nm.	2
Fig. S2 SEM images of LIG obtained at the power levels of 50% and 70%. (a-c) LIG-50 obtained at 50% power level. (d-f) LIG-70 obtained at 70% power level. The scale bars: (a, d) 50 μm , (b, e) 10 μm , and (c, f) 2 μm	3
Fig. S3 TEM images of LIG obtained at the power levels of 50% and 70%. (a-c) LIG-50 obtained at 50% power level. (d-f) LIG-70 obtained at 70% power level. The scale bars: (a, d) 0.5 μm , (b, e) 100 nm, and (c, f) 20 nm.	4
Fig. S4 XRD analysis of LIG-80. Survey scans were conducted at 2θ of 0-50° with a scan rate of 0.6s/0.02°. Detailed analysis of LIG-80 (shown in the inset and XRD pattern in red) was conducted at 2θ of 17-26° with a scan rate of 12s/0.02°. LIG-80 embedded on the lignin/PEO film was used for analysis, and the pristine lignin/PEO film (non-irradiated) used as a control. The presence of the characteristic peaks of PEO in the XRD pattern for LIG-80 suggests that the lignin/PEO film below embedded LIG could interfere with the analysis.	5
Fig. S5 XPS survey spectra of the lignin/PEO film and LIG-80. LIG embedded on the lignin/PEO film was used for XPS spectroscopy, and the pristine lignin/PEO film used as a control.	6
Fig. S6 Electrochemical analysis of LIG-50-SC and LIG-70-SC. (a) CV curves of LIG-50-SC at different scan rates. (b) CV curves of LIG-70-SC at different scan rates. (c) Specific areal capacitance (C_A) as a function of scan rate. (d) CD curves of LIG-50-SC at different discharge current densities. (e) CD curves of LIG-70-SC at different discharge current densities. (f) Specific areal capacitance (C_A) as a function of discharge current density.	7
Fig. S7 (a, b) Specific volumetric (C_V) capacitances calculated from LIG-80-SC as a function of scan rate and current density, respectively. (c, d) Ragone plots of LIG-80-SC.	8

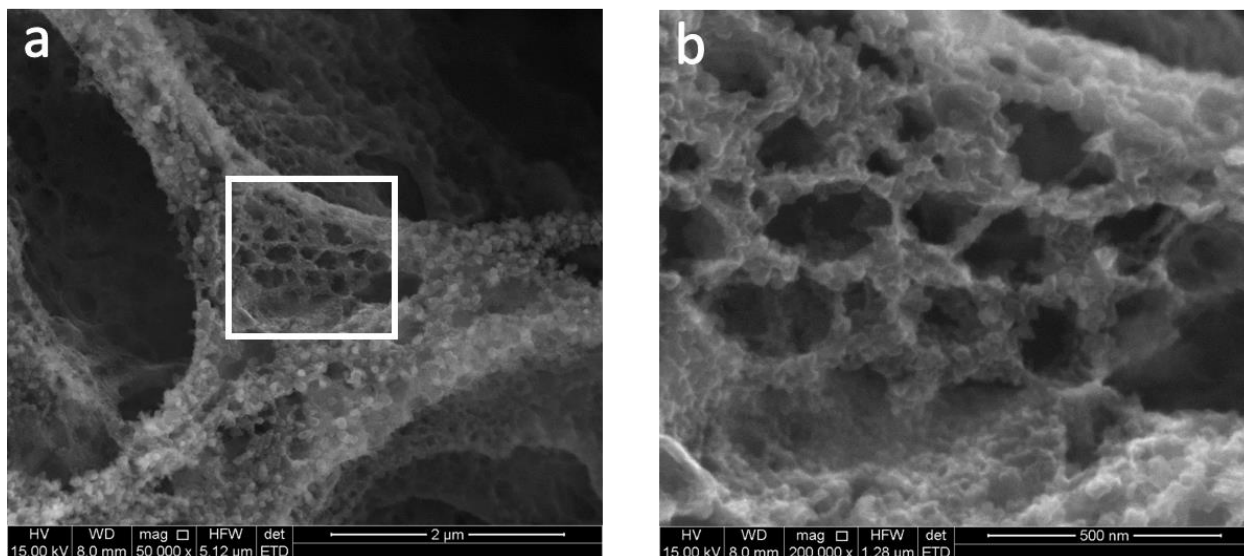


Fig. S1 (a) SEM image of porous LIG-80 embedded on a lignin/PEO film, scale bar is 2 μm. (b) A higher magnification of SEM image of the white square region in (a), showing a beehive-like porous structure, scale bar is 500 nm.

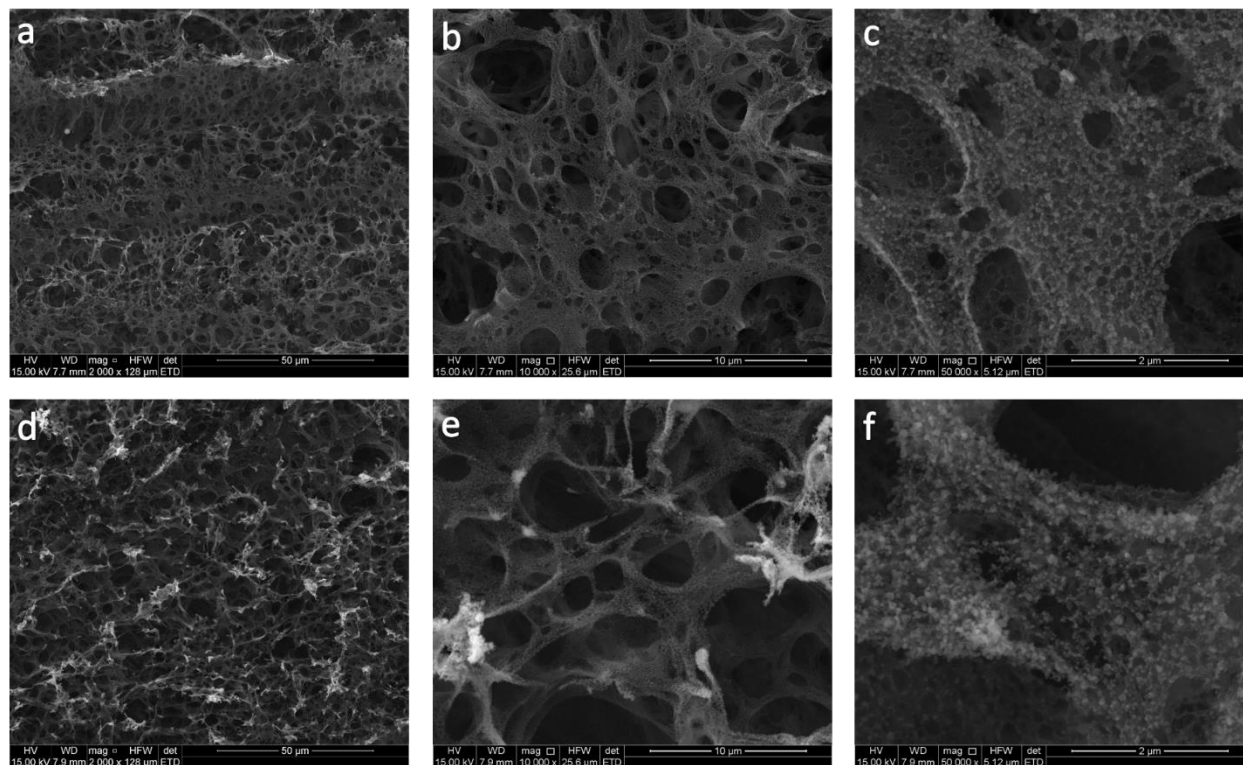


Fig. S2 SEM images of LIG obtained at the power levels of 50% and 70%. (a-c) LIG-50 obtained at 50% power level. (d-f) LIG-70 obtained at 70% power level. The scale bars: (a, d) 50 μm , (b, e) 10 μm , and (c, f) 2 μm .

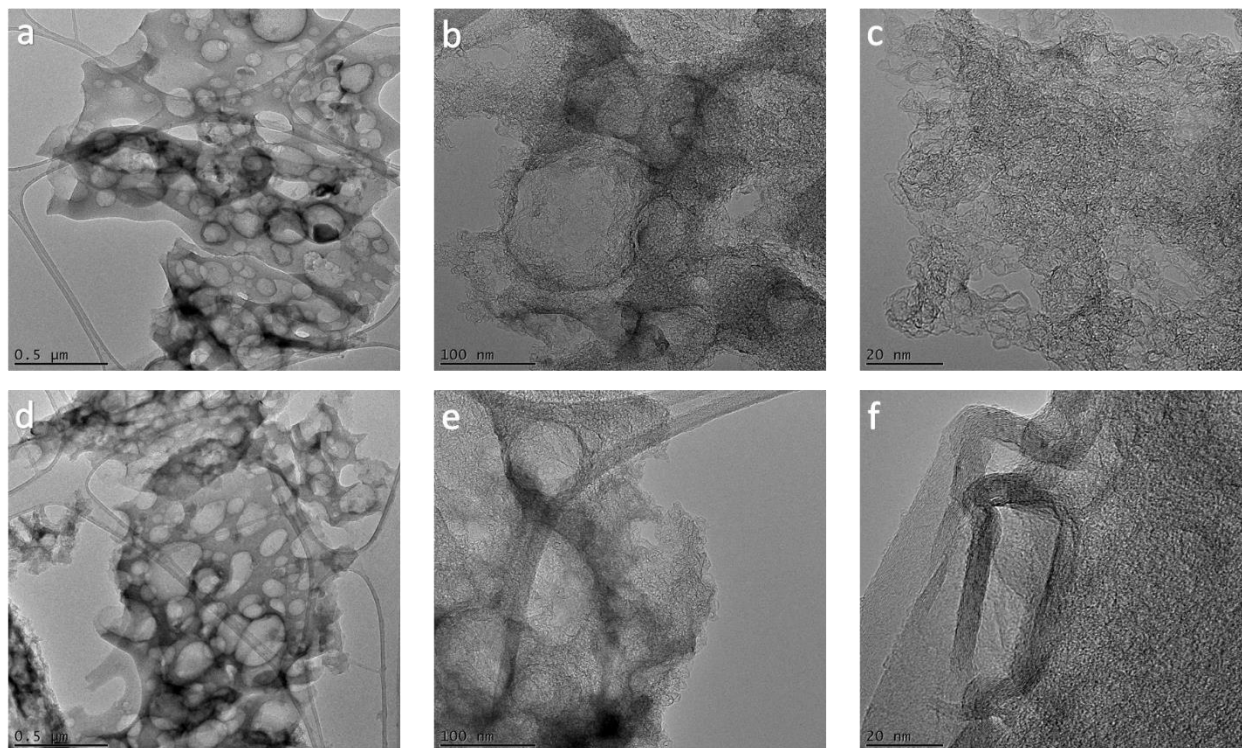


Fig. S3 TEM images of LIG obtained at the power levels of 50% and 70%. (a-c) LIG-50 obtained at 50% power level. (d-f) LIG-70 obtained at 70% power level. The scale bars: (a, d) 0.5 μm , (b, e) 100 nm, and (c, f) 20 nm.

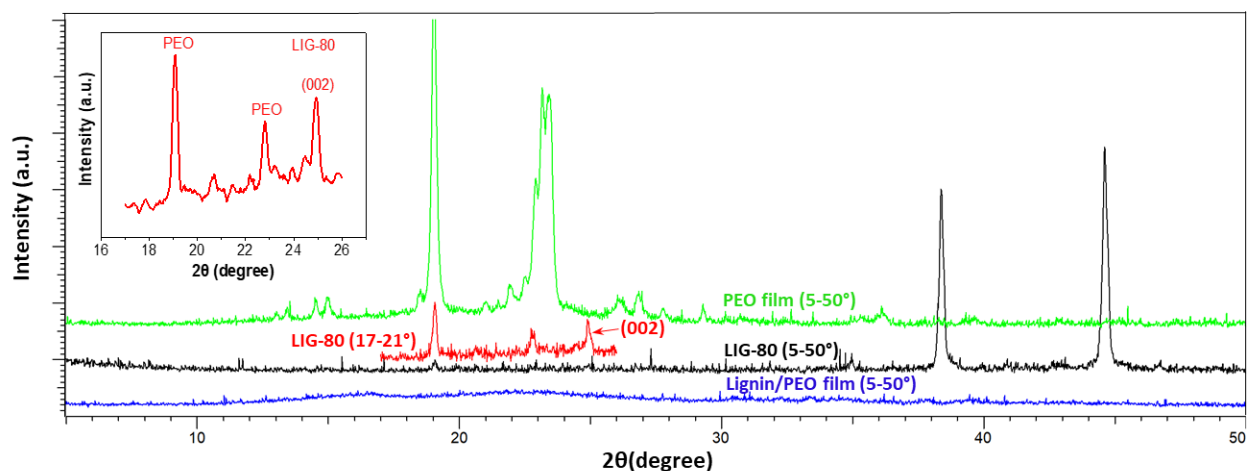


Fig. S4 XRD analysis of LIG-80. Survey scans were conducted at 2θ of $0-50^\circ$ with a scan rate of $0.6\text{s}/0.02^\circ$. Detailed analysis of LIG-80 (shown in the inset and XRD pattern in red) was conducted at 2θ of $17-26^\circ$ with a scan rate of $12\text{s}/0.02^\circ$. LIG-80 embedded on the lignin/PEO film was used for analysis, and the pristine lignin/PEO film (non-irradiated) used as a control. The presence of the characteristic peaks of PEO in the XRD pattern for LIG-80 suggests that the lignin/PEO film below embedded LIG could interfere with the analysis.

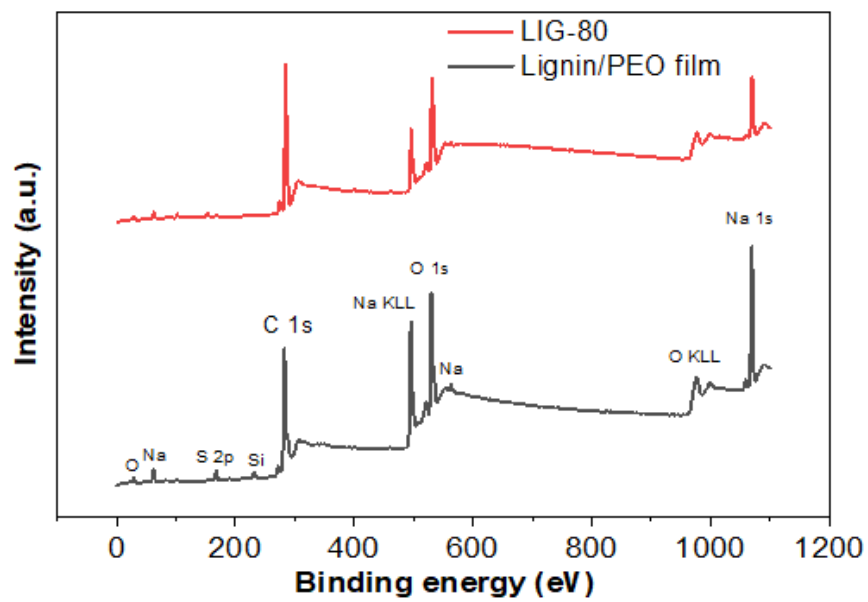


Fig. S5 XPS survey spectra of the lignin/PEO film and LIG-80. LIG embedded on the lignin/PEO film was used for XPS spectroscopy, and the pristine lignin/PEO film used as a control.

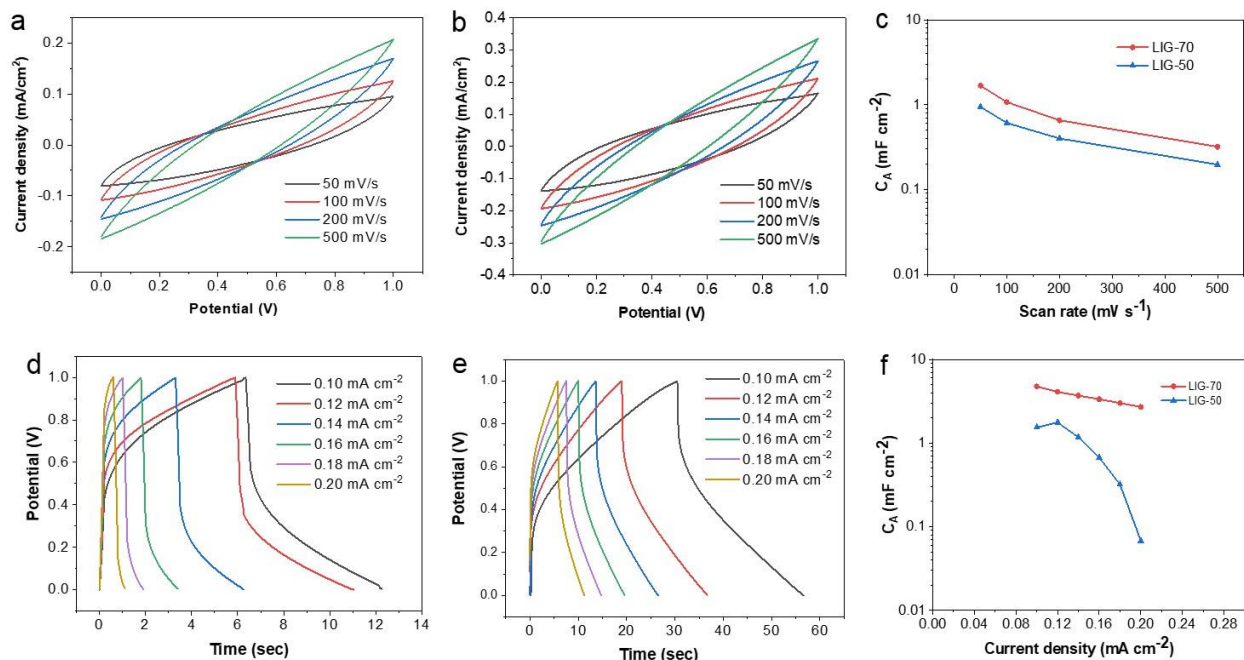


Fig. S6 Electrochemical analysis of LIG-50-SC and LIG-70-SC. (a) CV curves of LIG-50-SC at different scan rates. (b) CV curves of LIG-70-SC at different scan rates. (c) Specific areal capacitance (C_A) as a function of scan rate. (d) CD curves of LIG-50-SC at different discharge current densities. (e) CD curves of LIG-70-SC at different discharge current densities. (f) Specific areal capacitance (C_A) as a function of discharge current density.

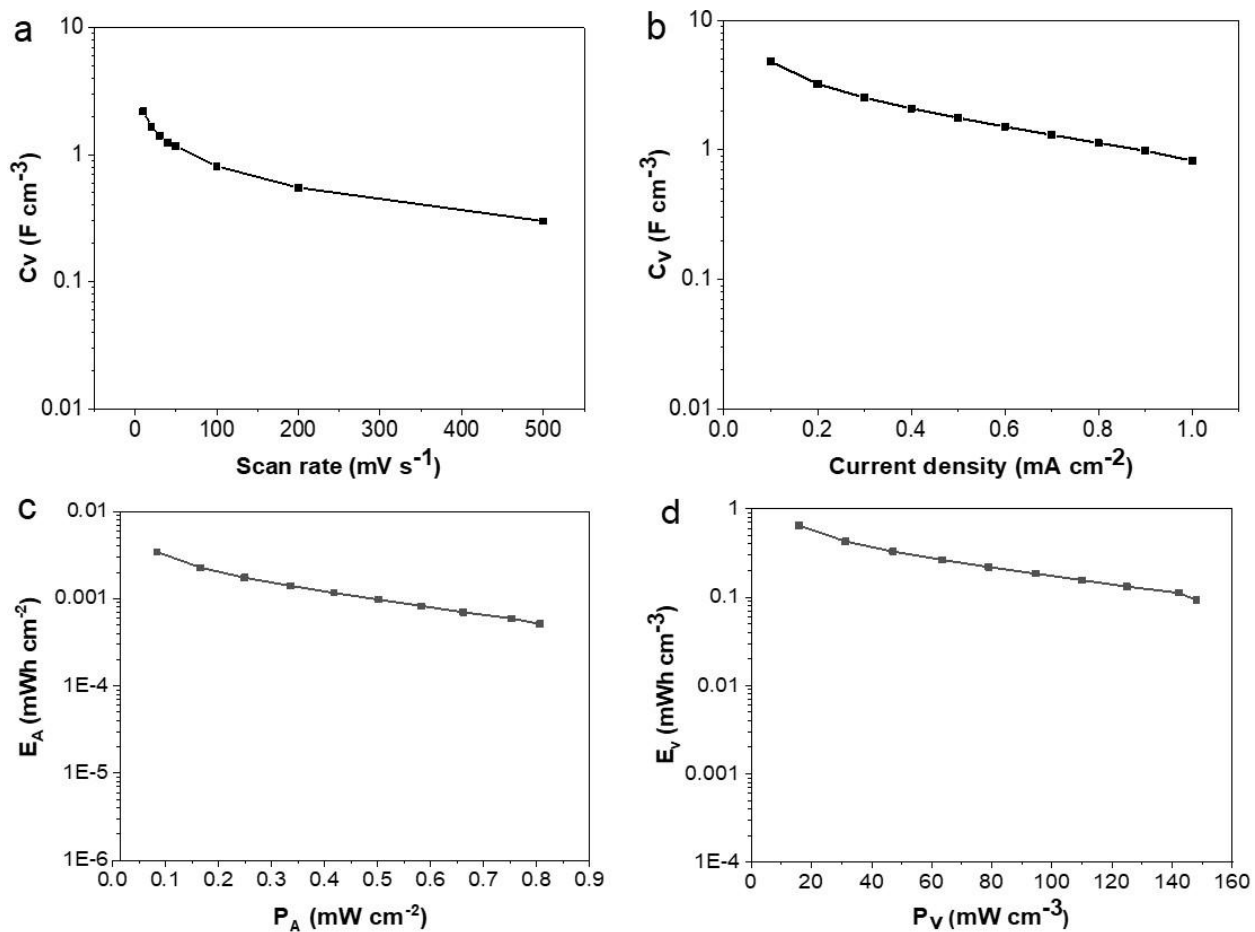


Fig. S7 (a, b) Specific volumetric (C_v) capacitances calculated from LIG-80-SC as a function of scan rate and current density, respectively. (c, d) Ragone plots of LIG-80-SC.