

Supplementary Material

Table 1. Relevant in-hospital laboratory data

	Reference	8/13	8/14	8/15	8/16	8/18	8/23
Troponin I (ng/mL)	<0.3	8.1	6.8	5.6	2.1		
Total CK (U/L)	Female 20-180	392	301				
CK-MB (%)	0-4	7.2	6.1				
BNP (pg/mL)	<100	399					
Lactate (mg/dL)	4.5-19.8	20.6	17.3				
CRP (mg/L)	<5	9			51.6*	66.9	5.9
Na (mEq/L)	136~146	137		136	134	134	138
K (mEq/L)	3.5~5.1	4.3	3.9	3.6	4.3	3.5	4.1
Ca (mg/dL)	8.6~10.3	7.4	7.9	7.5	7.5		
Mg (mEq/L)	1.3-2.1	1.6	2.0	2.0	2.0		
BUN (mg/dL)	7~25	14.8			7.7	10.9	13
Creatinine (mg/dL)	Female 0.44~1.03	0.56			0.46	0.53	0.49
ALT (U/L)	≤36	100	149				55
ESR (mm/hr)	0-20	2					
PT INR	≤1.2	1.2					
D-Dimer (FEU ng/mL)	≤550	3815	6433				
Fibrinogen (mg/dL)	190-380		175				
Hemoglobin (g/dL)	Female 12.0~16.0	12.4		10.6	10.5	10.7	11.6
Platelets (1000/uL)	150-400	251		237		271	337
WBC (1000/uL)	3.5 ~11.0	11.7		11.8		9.9	7.2
Segment (%)	42-74	88.2		84		78.2	69.3
Lymphocyte (%)	20-56	8.8		10.4		14.6	20.3
Monocyte	0-12	2.6		5		4.6	6.6
Eosinophil	0-5	0.1		0.3		2.2	3.5
Basophil	0-1	0.3		0.3		0.4	0.3

*Urinary tract infection during admission

Table 2. In-hospital medication

Medication	Aug. 13	14	15	16	17	18	19	20	21	22	23
Norepinephrine	Keep MAP > 65 mmHg										
Furosemide	IV 20 mg BID				Oral 20 mg QD						
Ivabradine				2.5 mg BID		5 mg BID					
Colchicine	0.5 mg QD										
Spirolactone						25 mg QD					
Losartan						25 mg QD					
Ceftriaxone *					IV 1g Q12h						

*For urinary tract infection

Figure 1. Chest X-ray on 8/13/2021 (left) and 8/30/2021 (right)

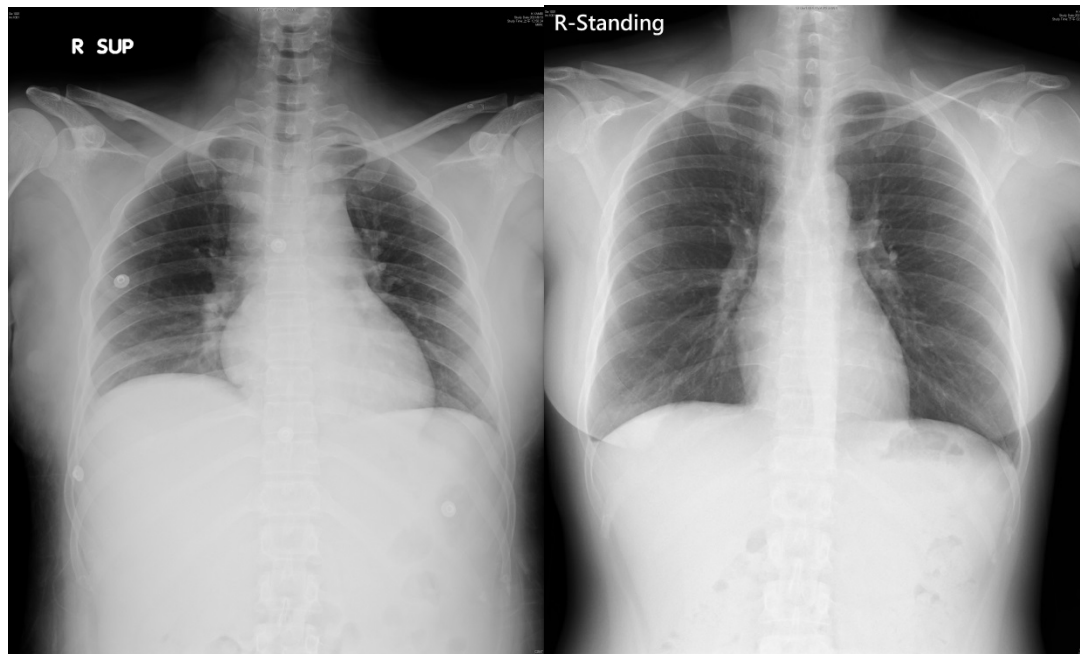


Figure 2. Parasternal long axis view of echocardiogram on 8/13/2021

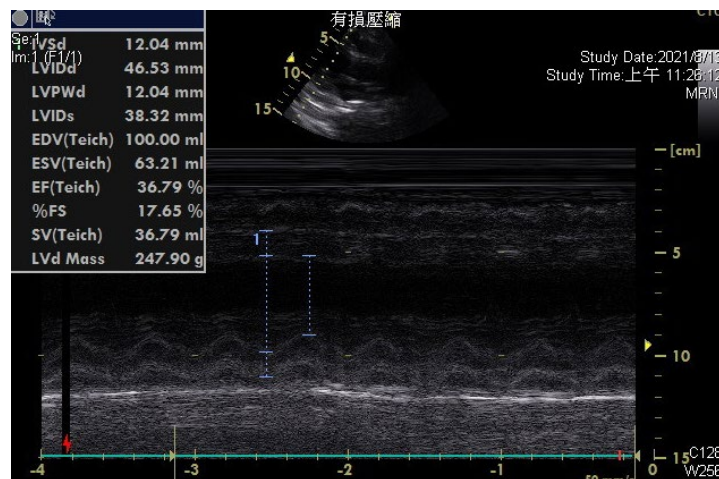


Figure 3. ECG and parasternal long axis view of echocardiogram on 1/17/2022

