

## Supplemental Online Content

Wang Y, Leifheit EC, Krumholz HM. Trends in 10-year outcomes among Medicare beneficiaries who survived an acute myocardial infarction. *JAMA Cardiol*. Published online May 4, 2022. doi:10.1001/jamacardio.2022.0662

**eMethods.** Expanded patient characteristics

**eReferences.**

**eTable 1.** Clinical Classifications Software categories

**eTable 2.** Overall patient characteristics by race: unweighted and weighted

**eTable 3.** Overall patient characteristics by sex: unweighted and weighted

**eTable 4.** Overall patient characteristics by dual Medicare-Medicaid eligibility: unweighted and weighted

**eTable 5.** Overall patient characteristics by living in a health priority area: unweighted and weighted

**eTable 6.** Inverse probability weight–adjusted rates of 10-year mortality and recurrence by demographic subgroups and index hospitalization year for all patients eligible for 10 years of follow-up

**eTable 7.** Change in risk of 10-year mortality and recurrent AMI for patients hospitalized in 2007-2009 compared with 1995-1997 by demographic subgroups

**eTable 8.** Observed rates of 10-year mortality and recurrent AMI by index hospitalization year and STEMI diagnosis

**eTable 9.** Inverse probability weight–adjusted mortality rates for patients with and without a recurrent AMI by demographic subgroups

**eTable 10.** Observed rate of CABG or PCI during the index AMI hospitalization by year and demographic subgroups

**eTable 11.** Observed 10-year rate of CABG or PCI after the index AMI hospitalization by demographic subgroups

**eFigure 1.** Distribution of mean age by demographic subgroups: 1995-2019

**eFigure 2.** Adjusted hazard ratios for the associations of demographic subgroups with 10-year mortality and recurrent AMI

**eFigure 3.** Adjusted Kaplan-Meier curves for 10-year mortality and recurrence by demographic subgroups: 1995-2009

**eFigure 4.** Median days to death or recurrent AMI by index hospitalization year

**eFigure 5.** Observed Kaplan-Meier curves for 10-year mortality and recurrent AMI by STEMI diagnosis and index hospitalization year

This supplementary material has been provided by the authors to give readers additional information about their work.

## **eMethods.** Expanded patient characteristics

Patient baseline characteristics were based on information available at the time of discharge for the initial AMI and included 1) demographic information (age [continuous], sex, race [Asian, Black, Hispanic, North American Native, White, other race/ethnicity, or unreported], living in a health priority area [i.e., geographic area with persistently higher adjusted mortality and hospitalization rates],<sup>1</sup> living in an area where the median income was <25<sup>th</sup> percentile of the national average,<sup>2</sup> dual-eligible for Medicare and Medicaid); 2) clinical comorbidities included in the Centers for Medicare & Medicaid Services hospital 30-day mortality measures for AMI,<sup>3</sup> history of or current smoking, and admission information (from a skilled nursing/intermediate care facility, from an emergency department, emergent or urgent admission, anterior MI, inferior/lateral/posterior MI); 3) in-hospital care (in-hospital percutaneous coronary intervention or coronary artery bypass grafting, more than 1 in-hospital complications, length of stay [continuous], discharged to home, transferred to another acute-care hospital); and 4) characteristics of the admission hospital (rural,<sup>4</sup> teaching, private-not-for profit, CABG-capable). We used the Agency for Healthcare Research and Quality Clinical Classifications Software (CCS; eTable 1) to identify the in-hospital complications, including infections (CCS-2 to CCS-10, CCS-126, CCS-135, CCS-159), complications of devices (CCS-237) and surgical procedures/medical care (CCS-238), and superficial injury/contusion (CCS-239). Because the maximum number of diagnosis codes in Medicare data increased from 10 to 25 in 2011,<sup>5</sup> we restricted the 2011–2019 data to the first 10 diagnosis codes.

## eReferences.

1. Krumholz HM, Normand ST, Wang Y. Geographical health priority areas for older Americans. *Health Aff (Millwood)*. 2018;37(1):104-110.
2. Spatz ES, Beckman AL, Wang Y, Desai NR, Krumholz HM. Geographic variation in trends and disparities in acute myocardial infarction hospitalization and mortality by income levels, 1999-2013. *JAMA Cardiol*. 2016;1(3):255-265.
3. Krumholz HM, Wang Y, Mattera JA, et al. An administrative claims model suitable for profiling hospital performance based on 30-day mortality rates among patients with an acute myocardial infarction. *Circulation*. 2006;113(13):1683-1692.
4. Health Resources & Services Administration. Defining rural population. <https://www.hrsa.gov/rural-health/about-us/definition>. Accessed January 11, 2022.
5. Centers for Medicare & Medicaid Services. 5010 implementation—Processing additional International Classification of Diseases, 9th Revision-Clinical Modification (ICD-9-CM) diagnosis and procedure codes in Pricer, Grouper, and the Medicare Code Editor (MCE). Pub 100-04. <https://www.cms.gov/Regulations-and-Guidance/Guidance/Transmittals/downloads/R2028CP.pdf>. Accessed January 11, 2022.

**eTable 1. Clinical Classifications Software categories**

<b>Clinical Classification Software ID</b>	<b>Disease category</b>
1	Tuberculosis
2	Septicemia (except in labor)
3	Bacterial infection; unspecified site
4	Mycoses
5	HIV infection
6	Hepatitis
7	Viral infection
8	Other infections; including parasitic
9	Sexually transmitted infections (not HIV or hepatitis)
10	Immunizations and screening for infectious disease
11	Cancer of head and neck
12	Cancer of esophagus
13	Cancer of stomach
14	Cancer of colon
15	Cancer of rectum and anus
16	Cancer of liver and intrahepatic bile duct
17	Cancer of pancreas
18	Cancer of other GI organs; peritoneum
19	Cancer of bronchus; lung
20	Cancer; other respiratory and intrathoracic
21	Cancer of bone and connective tissue
22	Melanomas of skin
23	Other non-epithelial cancer of skin
24	Cancer of breast
25	Cancer of uterus
26	Cancer of cervix
27	Cancer of ovary
28	Cancer of other female genital organs
29	Cancer of prostate
30	Cancer of testis
31	Cancer of other male genital organs
32	Cancer of bladder
33	Cancer of kidney and renal pelvis
34	Cancer of other urinary organs
35	Cancer of brain and nervous system
36	Cancer of thyroid
37	Hodgkin's disease
38	Non-Hodgkin's lymphoma
39	Leukemias
40	Multiple myeloma
41	Cancer; other and unspecified primary
42	Secondary malignancies
43	Malignant neoplasm without specification of site
44	Neoplasms of unspecified nature or uncertain behavior
45	Maintenance chemotherapy; radiotherapy
46	Benign neoplasm of uterus
47	Other and unspecified benign neoplasm
48	Thyroid disorders
49	Diabetes mellitus without complication
50	Diabetes mellitus with complications
51	Other endocrine disorders
52	Nutritional deficiencies

---

53	Disorders of lipid metabolism
54	Gout and other crystal arthropathies
55	Fluid and electrolyte disorders
56	Cystic fibrosis
57	Immunity disorders
58	Other nutritional; endocrine; and metabolic disorders
59	Deficiency and other anemia
60	Acute posthemorrhagic anemia
61	Sickle cell anemia
62	Coagulation and hemorrhagic disorders
63	Diseases of white blood cells
64	Other hematologic conditions
650	Adjustment disorders
651	Anxiety disorders
652	Attention-deficit, conduct, and disruptive behavior disorders
653	Delirium, dementia, and amnestic and other cognitive disorders
654	Developmental disorders
655	Disorders usually diagnosed in infancy, childhood, or adolescence
656	Impulse control disorders, NEC
657	Mood disorders
658	Personality disorders
659	Schizophrenia and other psychotic disorders
660	Alcohol-related disorders
661	Substance-related disorders
662	Suicide and intentional self-inflicted injury
663	Screening and history of mental health and substance abuse codes
670	Miscellaneous disorders
76	Meningitis (except that caused by tuberculosis or sexually transmitted disease)
77	Encephalitis (except that caused by tuberculosis or sexually transmitted disease)
78	Other CNS infection and poliomyelitis
79	Parkinson's disease
80	Multiple sclerosis
81	Other hereditary and degenerative nervous system conditions
82	Paralysis
83	Epilepsy; convulsions
84	Headache; including migraine
85	Coma; stupor; and brain damage
86	Cataract
87	Retinal detachments; defects; vascular occlusion; and retinopathy
88	Glaucoma
89	Blindness and vision defects
90	Inflammation; infection of eye (except that caused by tuberculosis or sexually transmitted disease)
91	Other eye disorders
92	Otitis media and related conditions
93	Conditions associated with dizziness or vertigo
94	Other ear and sense organ disorders
95	Other nervous system disorders
96	Heart valve disorders
97	Peri-; endo-; and myocarditis; cardiomyopathy (except that caused by tuberculosis or sexually transmitted disease)
98	Essential hypertension
99	Hypertension with complications and secondary hypertension
100	Acute myocardial infarction

---

---

101 Coronary atherosclerosis and other heart disease  
102 Nonspecific chest pain  
103 Pulmonary heart disease  
104 Other and ill-defined heart disease  
105 Conduction disorders  
106 Cardiac dysrhythmias  
107 Cardiac arrest and ventricular fibrillation  
108 Congestive heart failure; nonhypertensive  
109 Acute cerebrovascular disease  
110 Occlusion or stenosis of precerebral arteries  
111 Other and ill-defined cerebrovascular disease  
112 Transient cerebral ischemia  
113 Late effects of cerebrovascular disease  
114 Peripheral and visceral atherosclerosis  
115 Aortic; peripheral; and visceral artery aneurysms  
116 Aortic and peripheral arterial embolism or thrombosis  
117 Other circulatory disease  
118 Phlebitis; thrombophlebitis and thromboembolism  
119 Varicose veins of lower extremity  
120 Hemorrhoids  
121 Other diseases of veins and lymphatics  
122 Pneumonia (except that caused by tuberculosis or sexually transmitted disease)  
123 Influenza  
124 Acute and chronic tonsillitis  
125 Acute bronchitis  
126 Other upper respiratory infections  
127 Chronic obstructive pulmonary disease and bronchiectasis  
128 Asthma  
129 Aspiration pneumonitis; food/vomitus  
130 Pleurisy; pneumothorax; pulmonary collapse  
131 Respiratory failure; insufficiency; arrest (adult)  
132 Lung disease due to external agents  
133 Other lower respiratory disease  
134 Other upper respiratory disease  
135 Intestinal infection  
136 Disorders of teeth and jaw  
137 Diseases of mouth; excluding dental  
138 Esophageal disorders  
139 Gastroduodenal ulcer (except hemorrhage)  
140 Gastritis and duodenitis  
141 Other disorders of stomach and duodenum  
142 Appendicitis and other appendiceal conditions  
143 Abdominal hernia  
144 Regional enteritis and ulcerative colitis  
145 Intestinal obstruction without hernia  
146 Diverticulosis and diverticulitis  
147 Anal and rectal conditions  
148 Peritonitis and intestinal abscess  
149 Biliary tract disease  
150 Liver disease; alcohol-related  
151 Other liver diseases  
152 Pancreatic disorders (not diabetes)  
153 Gastrointestinal hemorrhage  
154 Noninfectious gastroenteritis  
155 Other gastrointestinal disorders

---

---

156	Nephritis; nephrosis; renal sclerosis
157	Acute and unspecified renal failure
158	Chronic kidney disease
159	Urinary tract infections
160	Calculus of urinary tract
161	Other diseases of kidney and ureters
162	Other diseases of bladder and urethra
163	Genitourinary symptoms and ill-defined conditions
164	Hyperplasia of prostate
165	Inflammatory conditions of male genital organs
166	Other male genital disorders
167	Nonmalignant breast conditions
168	Inflammatory diseases of female pelvic organs
169	Endometriosis
170	Prolapse of female genital organs
171	Menstrual disorders
172	Ovarian cyst
173	Menopausal disorders
174	Female infertility
175	Other female genital disorders
176	Contraceptive and procreative management
177	Spontaneous abortion
178	Induced abortion
179	Postabortion complications
180	Ectopic pregnancy
181	Other complications of pregnancy
182	Hemorrhage during pregnancy; abruptio placenta; placenta previa
183	Hypertension complicating pregnancy; childbirth and the puerperium
184	Early or threatened labor
185	Prolonged pregnancy
186	Diabetes or abnormal glucose tolerance complicating pregnancy; childbirth; or the puerperium
187	Malposition; malpresentation
188	Fetopelvic disproportion; obstruction
189	Previous C-section
190	Fetal distress and abnormal forces of labor
191	Polyhydramnios and other problems of amniotic cavity
192	Umbilical cord complication
193	OB-related trauma to perineum and vulva
194	Forceps delivery
195	Other complications of birth; puerperium affecting management of mother
196	Normal pregnancy and/or delivery
197	Skin and subcutaneous tissue infections
198	Other inflammatory condition of skin
199	Chronic ulcer of skin
200	Other skin disorders
201	Infective arthritis and osteomyelitis (except that caused by tuberculosis or sexually transmitted disease)
202	Rheumatoid arthritis and related disease
203	Osteoarthritis
204	Other non-traumatic joint disorders
205	Spondylosis; intervertebral disc disorders; other back problems
206	Osteoporosis
207	Pathological fracture
208	Acquired foot deformities

---

---

209	Other acquired deformities
210	Systemic lupus erythematosus and connective tissue disorders
211	Other connective tissue disease
212	Other bone disease and musculoskeletal deformities
213	Cardiac and circulatory congenital anomalies
214	Digestive congenital anomalies
215	Genitourinary congenital anomalies
216	Nervous system congenital anomalies
217	Other congenital anomalies
218	Liveborn
219	Short gestation; low birth weight; and fetal growth retardation
220	Intrauterine hypoxia and birth asphyxia
221	Respiratory distress syndrome
222	Hemolytic jaundice and perinatal jaundice
223	Birth trauma
224	Other perinatal conditions
225	Joint disorders and dislocations; trauma-related
226	Fracture of neck of femur (hip)
227	Spinal cord injury
228	Skull and face fractures
229	Fracture of upper limb
230	Fracture of lower limb
231	Other fractures
232	Sprains and strains
233	Intracranial injury
234	Crushing injury or internal injury
235	Open wounds of head; neck; and trunk
236	Open wounds of extremities
237	Complication of device; implant or graft
238	Complications of surgical procedures or medical care
239	Superficial injury; contusion
240	Burns
241	Poisoning by psychotropic agents
242	Poisoning by other medications and drugs
243	Poisoning by nonmedicinal substances
244	Other injuries and conditions due to external causes
245	Syncope
246	Fever of unknown origin
247	Lymphadenitis
248	Gangrene
249	Shock
250	Nausea and vomiting
251	Abdominal pain
252	Malaise and fatigue
253	Allergic reactions
254	Rehabilitation care; fitting of prostheses; and adjustment of devices
255	Administrative/social admission
256	Medical examination/evaluation
257	Other aftercare
258	Other screening for suspected conditions (not mental disorders or infectious disease)
259	Residual codes; unclassified
260	E Codes: All (external causes of injury and poisoning)
2601	E Codes: Cut/pierce
2602	E Codes: Drowning/submersion
2603	E Codes: Fall

---



---

2604	E Codes: Fire/burn
2605	E Codes: Firearm
2606	E Codes: Machinery
2607	E Codes: Motor vehicle traffic (MVT)
2608	E Codes: Pedal cyclist; not MVT
2609	E Codes: Pedestrian; not MVT
2610	E Codes: Transport; not MVT
2611	E Codes: Natural/environment
2612	E Codes: Overexertion
2613	E Codes: Poisoning
2614	E Codes: Struck by; against
2615	E Codes: Suffocation
2616	E Codes: Adverse effects of medical care
2617	E Codes: Adverse effects of medical drugs
2618	E Codes: Other specified and classifiable
2619	E Codes: Other specified; NEC
2620	E Codes: Unspecified
2621	E Codes: Place of occurrence

---

**eTable 2.** Overall patient characteristics by race: unweighted and weighted

Characteristics, n (%)	Unweighted			Inverse Probability Weighted		
	Black	Other <sup>a</sup>	White	Black	Other <sup>a</sup>	White
No. of patients	280525	181912	3519829	275146	195750	3521548
Age, mean (standard deviation), y	77.2 (7.5)	77.2 (7.4)	78.1 (7.4)	77.9 (7.5)	77.8 (7.4)	77.9 (7.4)
Female	162865 (58.1)	86259 (47.4)	1703326 (48.4)	132214 (48.1)	100933 (51.6)	1727020 (49.0)
Dual Medicare-Medicaid-eligible	109120 (38.9)	81693 (44.9)	433006 (12.3)	45395 (16.5)	26255 (13.4)	553423 (15.7)
Not enrolled in Part B	8878 (3.2)	8289 (4.6)	71182 (2.0)	6287 (2.3)	4335 (2.2)	78217 (2.2)
Living in a health priority area	75616 (27.0)	20071 (11.0)	740447 (21.0)	60996 (22.2)	51699 (26.4)	741219 (21.0)
Living in an area with income <25th percentile of national average	44057 (15.7)	20110 (11.1)	323751 (9.2)	29822 (10.8)	22571 (11.5)	344921 (9.8)
Admitted from a skilled nursing facility/intermediate care facility	3613 (1.3)	1511 (0.8)	32528 (0.9)	2722 (1.0)	2071 (1.1)	33346 (0.9)
Admitted from an emergency department	214371 (76.4)	135821 (74.7)	2493674 (70.8)	195757 (71.1)	135512 (69.2)	2514577 (71.4)
Emergent or urgent admission	259101 (92.4)	168060 (92.4)	3230235 (91.8)	252624 (91.8)	176998 (90.4)	3234050 (91.8)
Anterior MI	27442 (9.8)	22189 (12.2)	442307 (12.6)	33577 (12.2)	24076 (12.3)	434718 (12.3)
Inferior/lateral/posterior MI	34839 (12.4)	27459 (15.1)	635096 (18.0)	47165 (17.1)	34281 (17.5)	616274 (17.5)
Prior heart failure	51344 (18.3)	22360 (12.3)	381009 (10.8)	33683 (12.2)	23791 (12.2)	403723 (11.5)
Prior myocardial infarction	7351 (2.6)	4014 (2.2)	72540 (2.1)	5406 (2.0)	4217 (2.2)	75541 (2.1)
Unstable angina	11140 (4.0)	6904 (3.8)	119946 (3.4)	10046 (3.7)	7217 (3.7)	122187 (3.5)
Atherosclerotic disease	172386 (61.5)	119190 (65.5)	2397383 (68.1)	185037 (67.3)	130806 (66.8)	2377076 (67.5)
Respiratory failure	12180 (4.3)	6328 (3.5)	103340 (2.9)	9201 (3.3)	6071 (3.1)	108147 (3.1)
Hypertension	156832 (55.9)	97027 (53.3)	1876582 (53.3)	149433 (54.3)	103674 (53.0)	1884150 (53.5)
Prior stroke	8208 (2.9)	3456 (1.9)	54999 (1.6)	4820 (1.8)	3410 (1.7)	59205 (1.7)
Cerebral vascular disease other than stroke	17599 (6.3)	7827 (4.3)	158866 (4.5)	12741 (4.6)	9595 (4.9)	163076 (4.6)
Renal failure	75343 (26.9)	36881 (20.3)	495864 (14.1)	43649 (15.9)	28124 (14.4)	539321 (15.3)
Chronic obstructive pulmonary disease	52513 (18.7)	29603 (16.3)	730116 (20.7)	60789 (22.1)	44375 (22.7)	719481 (20.4)
Pneumonia	35992 (12.8)	24026 (13.2)	388280 (11.0)	33212 (12.1)	22329 (11.4)	397221 (11.3)
Protein-calorie malnutrition	14496 (5.2)	6495 (3.6)	89731 (2.5)	8085 (2.9)	5503 (2.8)	98384 (2.8)
Dementia	35135 (12.5)	14817 (8.1)	279322 (7.9)	23507 (8.5)	17340 (8.9)	291827 (8.3)
Functional disability	11932 (4.3)	4247 (2.3)	53676 (1.5)	5021 (1.8)	3520 (1.8)	62262 (1.8)
Peripheral vascular disease	28103 (10.0)	12020 (6.6)	233585 (6.6)	19489 (7.1)	14051 (7.2)	242436 (6.9)
Cancer	16928 (6.0)	7763 (4.3)	175682 (5.0)	14306 (5.2)	10094 (5.2)	177245 (5.0)
Trauma in past year	10325 (3.7)	8437 (4.6)	176616 (5.0)	14124 (5.1)	10238 (5.2)	172852 (4.9)
Other major psychiatric disorder	5786 (2.1)	3083 (1.7)	57841 (1.6)	4911 (1.8)	4000 (2.0)	59208 (1.7)
Liver disease	6779 (2.4)	5067 (2.8)	61316 (1.7)	5355 (1.9)	3457 (1.8)	64822 (1.8)
Depression	8720 (3.1)	6343 (3.5)	169515 (4.8)	12859 (4.7)	10610 (5.4)	163279 (4.6)

Diabetes	123573 (44.1)	78855 (43.3)	1050082 (29.8)	90671 (33.0)	60648 (31.0)	1110243 (31.5)
Asthma	9581 (3.4)	6367 (3.5)	76972 (2.2)	6310 (2.3)	4233 (2.2)	82129 (2.3)
Anemias	80923 (28.8)	43776 (24.1)	692889 (19.7)	57276 (20.8)	39249 (20.1)	723695 (20.6)
Parkinson's or Huntington's disease	2556 (0.9)	2360 (1.3)	50562 (1.4)	4060 (1.5)	2840 (1.5)	49083 (1.4)

<sup>a</sup>Other race includes Asian, Hispanic, North American Native, all other racial and ethnic groups, and unreported.

**eTable 3.** Overall patient characteristics by sex: unweighted and weighted

Characteristics, n (%)	Unweighted			Inverse Probability Weighted		
	Female	Male	SMD	Female	Male	SMD
No. of patients	1952450	2029816		1959313	2029964	
Age, mean (standard deviation), y	79.4 (7.6)	76.6 (6.9)	0.386	77.9 (7.6)	77.9 (6.9)	-0.002
Black	162865 (8.3)	117660 (5.8)	0.099	139035 (7.1)	146870 (7.2)	-0.005
Other race <sup>a</sup>	86259 (4.4)	95653 (4.7)	-0.014	91405 (4.7)	98514 (4.9)	-0.009
White	1703326 (87.2)	1816503 (89.5)	-0.07	1728873 (88.2)	1784580 (87.9)	0.01
Dual Medicare-Medicaid-eligible	411776 (21.1)	212043 (10.4)	0.295	306569 (15.6)	328342 (16.2)	-0.014
Not enrolled in Part B	24423 (1.3)	63926 (3.1)	-0.13	44371 (2.3)	45372 (2.2)	0.002
Living in a health priority area	414513 (21.2)	421621 (20.8)	0.011	409457 (20.9)	423017 (20.8)	0.002
Living in an area with income <25th percentile of national average	191797 (9.8)	196121 (9.7)	0.005	190724 (9.7)	198312 (9.8)	-0.001
Admitted from a skilled nursing facility/intermediate care facility	24761 (1.3)	12891 (0.6)	0.065	18626 (1.0)	19968 (1.0)	-0.003
Admitted from an emergency department	1382850 (70.8)	1461016 (72.0)	-0.026	1400264 (71.5)	1458593 (71.9)	-0.009
Emergent or urgent admission	1755370 (89.9)	1902026 (93.7)	-0.139	1799368 (91.8)	1860245 (91.6)	0.007
Anterior MI	242226 (12.4)	249712 (12.3)	0.003	240404 (12.3)	248193 (12.2)	0.001
Inferior/lateral/posterior MI	316700 (16.2)	380694 (18.8)	-0.067	343524 (17.5)	353512 (17.4)	0.003
Prior heart failure	255244 (13.1)	199469 (9.8)	0.102	223927 (11.4)	231654 (11.4)	0.001
Prior myocardial infarction	43366 (2.2)	40539 (2.0)	0.016	39605 (2.0)	44426 (2.2)	-0.012
Unstable angina	68192 (3.5)	69798 (3.4)	0.003	67665 (3.5)	69552 (3.4)	0.002
Atherosclerotic disease	1214270 (62.2)	1474689 (72.7)	-0.225	1322688 (67.5)	1366482 (67.3)	0.004
Respiratory failure	66828 (3.4)	55020 (2.7)	0.041	60982 (3.1)	63755 (3.1)	-0.002
Hypertension	1122482 (57.5)	1007959 (49.7)	0.158	1040544 (53.1)	1079733 (53.2)	-0.002
Prior stroke	36728 (1.9)	29935 (1.5)	0.032	33086 (1.7)	34433 (1.7)	-0.001
Cerebral vascular disease other than stroke	98185 (5.0)	86107 (4.2)	0.037	91491 (4.7)	95030 (4.7)	-0.001
Renal failure	275026 (14.1)	333062 (16.4)	-0.065	301413 (15.4)	313896 (15.5)	-0.002
Chronic obstructive pulmonary disease	381125 (19.5)	431107 (21.2)	-0.043	412222 (21.0)	425574 (21.0)	0.002
Pneumonia	230675 (11.8)	217623 (10.7)	0.035	223846 (11.4)	233346 (11.5)	-0.002
Protein-calorie malnutrition	63738 (3.3)	46984 (2.3)	0.058	55383 (2.8)	59118 (2.9)	-0.005
Dementia	203779 (10.4)	125495 (6.2)	0.155	161755 (8.3)	170585 (8.4)	-0.005
Functional disability	35318 (1.8)	34537 (1.7)	0.008	34797 (1.8)	36219 (1.8)	-0.001
Peripheral vascular disease	138743 (7.1)	134965 (6.6)	0.018	136019 (6.9)	141548 (7.0)	-0.001
Cancer	80746 (4.1)	119627 (5.9)	-0.081	101474 (5.2)	104038 (5.1)	0.002
Trauma in past year	119315 (6.1)	76063 (3.7)	0.109	95962 (4.9)	101313 (5.0)	-0.004
Other major psychiatric disorder	40621 (2.1)	26089 (1.3)	0.062	33377 (1.7)	36179 (1.8)	-0.006
Liver disease	35914 (1.8)	37248 (1.8)	0	36497 (1.9)	38019 (1.9)	-0.001
Depression	122557 (6.3)	62021 (3.1)	0.153	91328 (4.7)	97346 (4.8)	-0.006
Diabetes	622006 (31.9)	630504 (31.1)	0.017	616117 (31.4)	636726 (31.4)	0.002

Asthma	60482 (3.1)	32438 (1.6)	0.099	45604 (2.3)	47473 (2.3)	-0.001
Anemias	451590 (23.1)	365998 (18.0)	0.126	404335 (20.6)	422701 (20.8)	-0.005
Parkinson's or Huntington's disease	23402 (1.2)	32076 (1.6)	-0.033	27458 (1.4)	28509 (1.4)	0

Abbreviations: SMD, standardized mean difference.

<sup>a</sup>Other race includes Asian, Hispanic, North American Native, all other racial and ethnic groups, and unreported.

**eTable 4.** Overall patient characteristics by dual Medicare-Medicaid eligibility: unweighted and weighted

Characteristics, n (%)	Unweighted			Inverse Probability Weighted		
	Dual-eligible	Non-dual-eligible	SMD	Dual-eligible	Non-dual-eligible	SMD
No. of patients	623819	3358447		617842	3369596	
Age, mean (standard deviation), y	78.2 (7.8)	77.9 (7.4)	0.045	77.9 (7.8)	78.0 (7.4)	-0.002
Female	411776 (66.0)	1540674 (45.9)	0.414	304779 (49.3)	1657141 (49.2)	0.003
Black	109120 (17.5)	171405 (5.1)	0.399	44391 (7.2)	240612 (7.1)	0.002
Other race <sup>a</sup>	81693 (13.1)	100219 (3.0)	0.379	28864 (4.7)	160476 (4.8)	-0.004
White	433006 (69.4)	3086823 (91.9)	-0.594	544586 (88.1)	2968508 (88.1)	0.001
Not enrolled in Part B	54 (0.0)	88295 (2.6)	-0.231	22653 (3.7)	74509 (2.2)	0.086
Living in a health priority area	157514 (25.2)	678620 (20.2)	0.121	128232 (20.8)	710534 (21.1)	-0.008
Living in an area with income <25th percentile of national average	105711 (16.9)	282207 (8.4)	0.259	62425 (10.1)	332815 (9.9)	0.008
Admitted from a skilled nursing facility/intermediate care facility	13800 (2.2)	23852 (0.7)	0.125	6286 (1.0)	33288 (1.0)	0.003
Admitted from an emergency department	438758 (70.3)	2405108 (71.6)	-0.028	437619 (70.8)	2403847 (71.3)	-0.011
Emergent or urgent admission	561586 (90.0)	3095810 (92.2)	-0.076	566759 (91.7)	3093322 (91.8)	-0.003
Anterior MI	67559 (10.8)	424379 (12.6)	-0.056	76643 (12.4)	415545 (12.3)	0.002
Inferior/lateral/posterior MI	84085 (13.5)	613309 (18.3)	-0.131	106465 (17.2)	588682 (17.5)	-0.006
Prior heart failure	113490 (18.2)	341223 (10.2)	0.232	73936 (12.0)	389881 (11.6)	0.012
Prior myocardial infarction	17974 (2.9)	65931 (2.0)	0.06	12655 (2.0)	72545 (2.2)	-0.007
Unstable angina	27161 (4.4)	110829 (3.3)	0.055	21057 (3.4)	117557 (3.5)	-0.004
Atherosclerotic disease	389010 (62.4)	2299949 (68.5)	-0.129	411242 (66.6)	2272336 (67.4)	-0.019
Respiratory failure	31916 (5.1)	89932 (2.7)	0.126	20606 (3.3)	104916 (3.1)	0.013
Hypertension	338422 (54.3)	1792019 (53.4)	0.018	328959 (53.2)	1801771 (53.5)	-0.005
Prior stroke	15527 (2.5)	51136 (1.5)	0.069	11640 (1.9)	57438 (1.7)	0.014
Cerebral vascular disease other than stroke	39737 (6.4)	144555 (4.3)	0.092	30640 (5.0)	157784 (4.7)	0.013
Renal failure	130054 (20.8)	478034 (14.2)	0.175	95976 (15.5)	517911 (15.4)	0.005
Chronic obstructive pulmonary disease	173429 (27.8)	638803 (19.0)	0.209	131196 (21.2)	692941 (20.6)	0.017
Pneumonia	104224 (16.7)	344074 (10.2)	0.19	74176 (12.0)	383412 (11.4)	0.02
Protein-calorie malnutrition	29997 (4.8)	80725 (2.4)	0.129	18933 (3.1)	95755 (2.8)	0.013
Dementia	89483 (14.3)	239791 (7.1)	0.234	53550 (8.7)	283062 (8.4)	0.01
Functional disability	21673 (3.5)	48182 (1.4)	0.132	12308 (2.0)	60938 (1.8)	0.013
Peripheral vascular disease	60914 (9.8)	212794 (6.3)	0.126	44685 (7.2)	233864 (6.9)	0.011
Cancer	30010 (4.8)	170363 (5.1)	-0.012	30989 (5.0)	169647 (5.0)	-0.001
Trauma in past year	38758 (6.2)	156620 (4.7)	0.068	31529 (5.1)	166659 (4.9)	0.007
Other major psychiatric disorder	21848 (3.5)	44862 (1.3)	0.141	11956 (1.9)	58815 (1.7)	0.014
Liver disease	16617 (2.7)	56545 (1.7)	0.067	11566 (1.9)	62420 (1.9)	0.001
Depression	40654 (6.5)	143924 (4.3)	0.099	30336 (4.9)	158073 (4.7)	0.01
Diabetes	254917 (40.9)	997593 (29.7)	0.235	196969 (31.9)	1064317 (31.6)	0.006

Asthma	18514 (3.0)	74406 (2.2)	0.047	13944 (2.3)	78854 (2.3)	-0.006
Anemias	163008 (26.1)	654580 (19.5)	0.159	127497 (20.6)	694800 (20.6)	0
Parkinson's or Huntington's disease	11118 (1.8)	44360 (1.3)	0.037	8618 (1.4)	47268 (1.4)	-0.001

Abbreviations: SMD, standardized mean difference.

<sup>a</sup>Other race includes Asian, Hispanic, North American Native, all other racial and ethnic groups, and unreported.

**eTable 5.** Overall patient characteristics by living in a health priority area: unweighted and weighted

Characteristics, n (%)	Unweighted			Inverse Probability Weighted		
	In priority area	Not in priority area	SMD	In priority area	Not in priority area	SMD
No. of patients	836134	3146132		836342	3146848	
Age, mean (standard deviation), y	77.3 (7.3)	78.1 (7.4)	-0.12	77.9 (7.3)	78.0 (7.4)	-0.004
Female	414513 (49.6)	1537937 (48.9)	0.014	410109 (49.0)	1543050 (49.0)	0
Black	75616 (9.0)	204909 (6.5)	0.095	62877 (7.5)	227080 (7.2)	0.012
Other race <sup>a</sup>	20071 (2.4)	161841 (5.1)	-0.144	40043 (4.8)	143909 (4.6)	0.01
White	740447 (88.6)	2779382 (88.3)	0.007	733422 (87.7)	2775859 (88.2)	-0.016
Dual Medicare-Medicaid-eligible	157514 (18.8)	466305 (14.8)	0.108	129007 (15.4)	493491 (15.7)	-0.007
Not enrolled in Part B	15179 (1.8)	73170 (2.3)	-0.036	18618 (2.2)	69829 (2.2)	0.001
Living in an area with income <25th percentile of national average	185861 (22.2)	202057 (6.4)	0.463	81265 (9.7)	307310 (9.8)	-0.002
Admitted from a skilled nursing facility/intermediate care facility	5350 (0.6)	32302 (1.0)	-0.043	7717 (0.9)	29661 (0.9)	-0.002
Admitted from an emergency department	574751 (68.7)	2269115 (72.1)	-0.074	598539 (71.6)	2248431 (71.5)	0.003
Emergent or urgent admission	745928 (89.2)	2911468 (92.5)	-0.116	766956 (91.7)	2888761 (91.8)	-0.004
Anterior MI	100589 (12.0)	391349 (12.4)	-0.013	103664 (12.4)	389027 (12.4)	0.001
Inferior/lateral/posterior MI	145534 (17.4)	551860 (17.5)	-0.004	147073 (17.6)	551495 (17.5)	0.002
Prior heart failure	99436 (11.9)	355277 (11.3)	0.019	95084 (11.4)	359148 (11.4)	-0.001
Prior myocardial infarction	17354 (2.1)	66551 (2.1)	-0.003	16503 (2.0)	67138 (2.1)	-0.011
Unstable angina	29184 (3.5)	108806 (3.5)	0.002	28541 (3.4)	108844 (3.5)	-0.003
Atherosclerotic disease	576802 (69.0)	2112157 (67.1)	0.04	565895 (67.7)	2125359 (67.5)	0.003
Respiratory failure	27950 (3.3)	93898 (3.0)	0.021	25521 (3.1)	96239 (3.1)	0
Hypertension	455958 (54.5)	1674483 (53.2)	0.026	446397 (53.4)	1683142 (53.5)	-0.002
Prior stroke	14971 (1.8)	51692 (1.6)	0.011	13966 (1.7)	52696 (1.7)	0
Cerebral vascular disease other than stroke	41662 (5.0)	142630 (4.5)	0.021	38650 (4.6)	145643 (4.6)	0
Renal failure	126778 (15.2)	481310 (15.3)	-0.004	128256 (15.3)	480925 (15.3)	0.002
Chronic obstructive pulmonary disease	187845 (22.5)	624387 (19.8)	0.064	168207 (20.1)	640072 (20.3)	-0.006
Pneumonia	101301 (12.1)	346997 (11.0)	0.034	93532 (11.2)	353884 (11.2)	-0.002
Protein-calorie malnutrition	25584 (3.1)	85138 (2.7)	0.021	23485 (2.8)	87771 (2.8)	0.001
Dementia	71142 (8.5)	258132 (8.2)	0.011	68806 (8.2)	260225 (8.3)	-0.002
Functional disability	14788 (1.8)	55067 (1.8)	0.001	14751 (1.8)	55343 (1.8)	0
Peripheral vascular disease	59740 (7.1)	213968 (6.8)	0.014	57478 (6.9)	216294 (6.9)	0
Cancer	38651 (4.6)	161722 (5.1)	-0.024	41986 (5.0)	158242 (5.0)	0
Trauma in past year	38930 (4.7)	156448 (5.0)	-0.015	40727 (4.9)	154161 (4.9)	-0.001
Other major psychiatric disorder	13751 (1.6)	52959 (1.7)	-0.003	14089 (1.7)	52743 (1.7)	0.001
Liver disease	15399 (1.8)	57763 (1.8)	0	15394 (1.8)	57848 (1.8)	0
Depression	39019 (4.7)	145559 (4.6)	0.002	38523 (4.6)	145571 (4.6)	-0.001



Diabetes	268445 (32.1)	984065 (31.3)	0.018	263151 (31.5)	990047 (31.5)	0
Asthma	16713 (2.0)	76207 (2.4)	-0.029	19507 (2.3)	73424 (2.3)	0
Anemias	169713 (20.3)	647875 (20.6)	-0.007	171643 (20.5)	645983 (20.5)	0
Parkinson's or Huntington's disease	11450 (1.4)	44028 (1.4)	-0.003	11558 (1.4)	43792 (1.4)	-0.001

Abbreviations: SMD, standardized mean difference.

<sup>a</sup>Other race includes Asian, Hispanic, North American Native, all other racial and ethnic groups, and unreported.

**eTable 6.** Inverse probability weight–adjusted rates of 10-year mortality and recurrence by demographic subgroups and index hospitalization year for all patients eligible for 10 years of follow-up

Subgroup, % (95% CI)	Mortality			Recurrent AMI		
	1995–1999	2000–2004	2005–2009	1995–1999	2000–2004	2005–2009
Female	70.8 (70.7-71.0)	71.5 (71.3-71.6)	72.1 (72.0-72.3)	30.9 (30.7-31.1)	27.3 (27.1-27.5)	24.9 (24.7-25.1)
Male	75.0 (74.9-75.2)	75.0 (74.9-75.2)	75.1 (74.9-75.2)	31.9 (31.7-32.1)	29.0 (28.8-29.2)	26.3 (26.0-26.5)
Black	76.1 (75.7-76.4)	75.4 (75.0-75.7)	74.6 (74.2-74.9)	32.5 (31.6-33.3)	29.9 (29.3-30.5)	28.6 (27.9-29.2)
Other race (Asian, Hispanic, North American Native, all other racial and ethnic groups, and unreported)	74.1 (73.6-74.6)	71.3 (70.9-71.7)	70.0 (69.5-70.4)	32.1 (31.5-32.8)	27.9 (27.3-28.6)	24.6 (23.9-25.3)
White	73.2 (73.1-73.3)	73.4 (73.3-73.5)	74.0 (73.9-74.1)	31.6 (31.4-31.7)	28.0 (27.8-28.1)	25.3 (25.2-25.5)
Dual Medicare-Medicaid-eligible	80.9 (80.6-81.1)	80.2 (80.0-80.4)	79.2 (79.0-79.5)	36.0 (35.6-36.5)	32.4 (32.0-32.8)	29.0 (28.6-29.5)
Non-dual-eligible	72.5 (72.4-72.6)	72.5 (72.4-72.6)	72.8 (72.7-72.9)	31.2 (31.0-31.3)	27.7 (27.5-27.8)	25.0 (24.8-25.2)
Health priority area	75.2 (75.0-75.4)	74.9 (74.7-75.1)	75.0 (74.8-75.2)	31.7 (31.4-32.0)	28.2 (27.9-28.5)	25.8 (25.4-26.1)
Non-priority area	72.6 (72.5-72.7)	72.8 (72.7-72.9)	73.1 (73.0-73.2)	31.3 (31.2-31.5)	27.9 (27.7-28.0)	25.3 (25.1-25.5)

Abbreviations: AMI, acute myocardial infarction; CI, confidence interval.

**eTable 7.** Change in risk of 10-year mortality and recurrent AMI for patients hospitalized in 2007-2009 compared with 1995-1997 by demographic subgroups

Subgroup	IPW-adjusted Hazard Ratio (95% CI)	
	Mortality	Recurrent AMI
Age 65–79 years	0.86 (0.86-0.87)	0.74 (0.73-0.76)
Age 80 years or older	0.86 (0.85-0.87)	0.81 (0.80-0.83)
Female	0.88 (0.87-0.89)	0.76 (0.75-0.78)
Male	0.86 (0.86-0.87)	0.79 (0.78-0.81)
Black	0.81 (0.80-0.83)	0.89 (0.85-0.94)
Other race (Asian, Hispanic, North American Native, all other racial and ethnic groups, and unreported)	0.78 (0.76-0.81)	0.73 (0.68-0.78)
White	0.87 (0.86-0.87)	0.77 (0.76-0.78)
Dual Medicare-Medicaid-eligible	0.85 (0.84-0.86)	0.82 (0.79-0.85)
Non-dual-eligible	0.86 (0.85-0.86)	0.76 (0.75-0.77)
Health priority area	0.89 (0.88-0.90)	0.77 (0.75-0.80)
Non-priority area	0.86 (0.85-0.86)	0.77 (0.76-0.79)

Abbreviations: AMI, acute myocardial infarction; CI, confidence interval; IPW, inverse probability weight.

**eTable 8.** Observed rates of 10-year mortality and recurrent AMI by index hospitalization year and STEMI diagnosis

<b>Outcome, % (95% CI)</b>	<b>STEMI or NSTEMI</b>	<b>1995–1999</b>	<b>2000–2004</b>	<b>2005–2009</b>	<b>2010–2014</b>	<b>2015–2019</b>
10-year Recurrent AMI	NSTEMI	31.3 (31.1-31.4)	27.7 (27.5-27.8)	25.3 (25.1-25.4)	24.2 (24.0-24.5)	15.5 (15.2-15.7)
10-year Recurrent AMI	STEMI	34.9 (34.2-35.6)	32.5 (31.9-33.1)	27.0 (26.2-27.7)	23.1 (21.4-24.7)	12.4 (11.4-13.5)
10-year Mortality	NSTEMI	72.1 (72.0-72.2)	72.4 (72.3-72.5)	73.0 (72.9-73.1)	71.4 (71.2-71.6)	44.6 (44.4-44.9)
10-year Mortality	STEMI	83.1 (82.8-83.3)	80.9 (80.6-81.1)	79.1 (78.7-79.5)	74.3 (73.3-75.2)	42.9 (41.7-44.2)

Abbreviations: AMI, acute myocardial infarction; CI, confidence interval; NSTEMI, non-ST-segment elevation myocardial infarction; STEMI, ST-segment elevation myocardial infarction.

**eTable 9.** Inverse probability weight–adjusted mortality rates for patients with and without a recurrent AMI by demographic subgroups

<b>Subgroup, % (95% CI)</b>	<b>Recurrence-free</b>	<b>Recurrence</b>
Age 65–79 years	59.6 (59.5-59.7)	71.6 (71.3-71.8)
Age 80 years or older	89.3 (89.2-89.4)	92.8 (92.7-93.0)
Female	69.5 (69.4-69.6)	79.5 (79.3-79.7)
Male	73.2 (73.1-73.3)	81.8 (81.6-82.0)
Black	75.8 (75.4-76.1)	82.9 (82.3-83.6)
Other race (Asian, Hispanic, North American Native, all other racial and ethnic groups, and unreported)	66.3 (65.9-66.8)	79.5 (78.6-80.4)
White	69.1 (69.0-69.2)	78.8 (78.6-79.0)
Dual Medicare-Medicaid-eligible	78.5 (78.4-78.6)	85.0 (84.7-85.2)
Non-dual-eligible	70.7 (70.6-70.7)	80.1 (79.9-80.2)
Health priority area	73.2 (73.1-73.3)	82.1 (81.9-82.3)
Non-priority area	71.0 (70.9-71.0)	80.1 (80.0-80.3)

Abbreviations: CI, confidence interval.

**eTable 10.** Observed rate of CABG or PCI during the index AMI hospitalization by year and demographic subgroups

<b>Subgroup, % (95% CI)</b>	<b>1995–1999</b>	<b>2000–2004</b>	<b>2005–2009</b>	<b>2010–2014</b>	<b>2015–2019</b>
Age 65–79 years	28.5 (28.4-28.6)	40.2 (40.1-40.4)	52.0 (51.8-52.1)	57.8 (57.7-58)	47.8 (47.7-48.0)
Age 80 years or older	11.7 (11.6-11.9)	19.9 (19.8-20.0)	28.0 (27.8-28.1)	33.0 (32.8-33.2)	29.6 (29.4-29.8)
Female	19.0 (18.9-19.1)	26.9 (26.8-27.0)	34.9 (34.8-35.1)	39.6 (39.4-39.8)	34.9 (34.7-35.1)
Male	25.7 (25.6-25.9)	36.9 (36.8-37.1)	48.0 (47.9-48.2)	54.6 (54.4-54.8)	46.2 (46.0-46.3)
Black	15.9 (15.6-16.2)	23.2 (22.9-23.5)	29.9 (29.5-30.3)	36.3 (35.9-36.7)	32.1 (31.7-32.5)
Other race (Asian, Hispanic, North American Native, all other racial and ethnic groups, and unreported)	20.9 (20.5-21.4)	28.7 (28.3-29.1)	39.0 (38.5-39.5)	45.5 (44.9-46.0)	40.4 (40.0-40.9)
White	22.9 (22.8-22.9)	32.7 (32.6-32.8)	42.6 (42.4-42.7)	48.5 (48.4-48.6)	41.9 (41.8-42.1)
Dual Medicare-Medicaid-eligible	13.8 (13.7-14.0)	21.6 (21.4-21.8)	29.8 (29.6-30.1)	36.2 (35.9-36.5)	31.9 (31.6-32.2)
Non-dual-eligible	23.7 (23.6-23.8)	33.8 (33.7-33.9)	43.8 (43.7-43.9)	49.7 (49.6-49.8)	42.7 (42.6-42.9)
Health priority area	24.3 (24.2-24.5)	33.6 (33.4-33.8)	42.9 (42.7-43.2)	49.1 (48.8-49.4)	42.4 (42.2-42.7)
Non-priority area	21.8 (21.8-21.9)	31.4 (31.3-31.5)	41.1 (41.0-41.2)	46.9 (46.8-47.0)	40.8 (40.6-40.9)

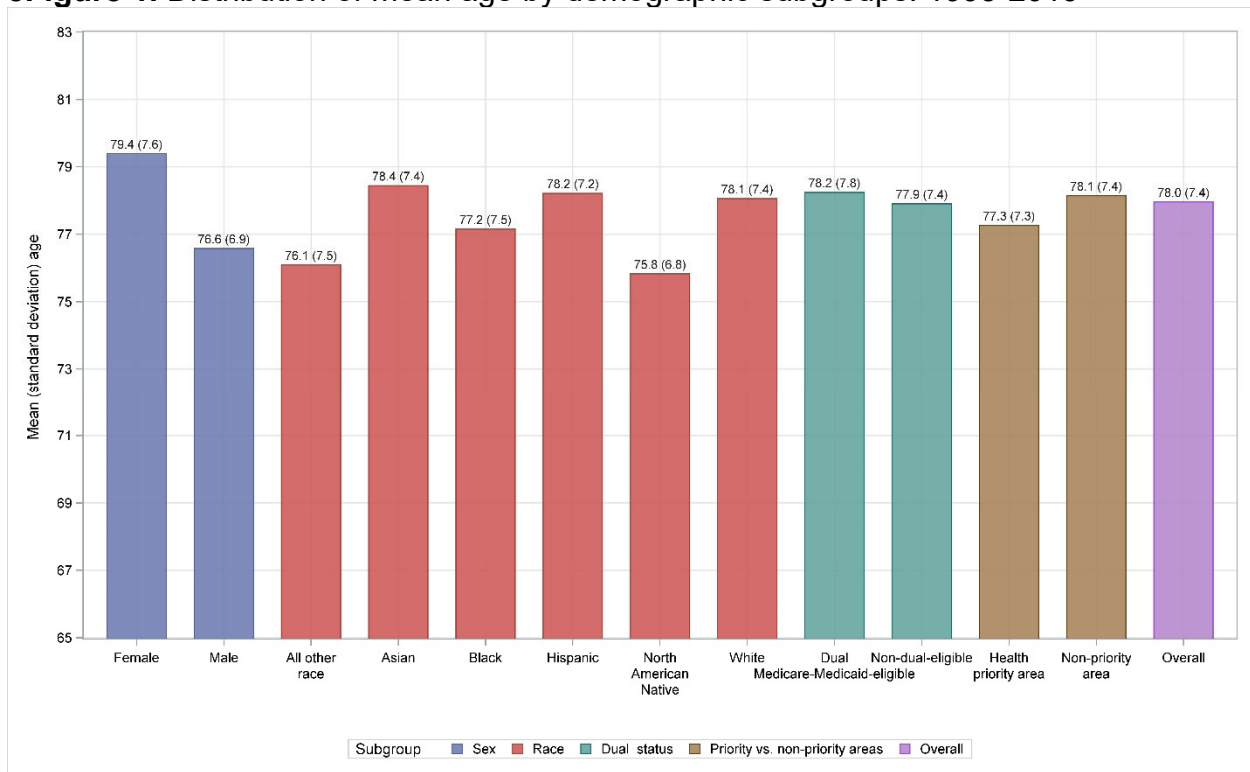
Abbreviations: CI, confidence interval.

**eTable 11.** Observed 10-year rate of CABG or PCI after the index AMI hospitalization by demographic subgroups

<b>Subgroup</b>	<b>% (95% CI)</b>
Age 65–79 years	20.9 (20.8-21.0)
Age 80 years or older	9.41 (9.34-9.48)
Female	13.6 (13.5-13.7)
Male	19.9 (19.8-20.0)
Black	13.1 (12.9-13.3)
Other race (Asian, Hispanic, North American Native, all other racial and ethnic groups, and unreported)	15.9 (15.7-16.2)
White	16.9 (16.9-17.0)
Dual Medicare-Medicaid-eligible	13.8 (13.6-13.9)
Non-dual-eligible	17.1 (17.0-17.2)
Health priority area	16.9 (16.8-17.1)
Non-priority area	16.5 (16.4-16.5)

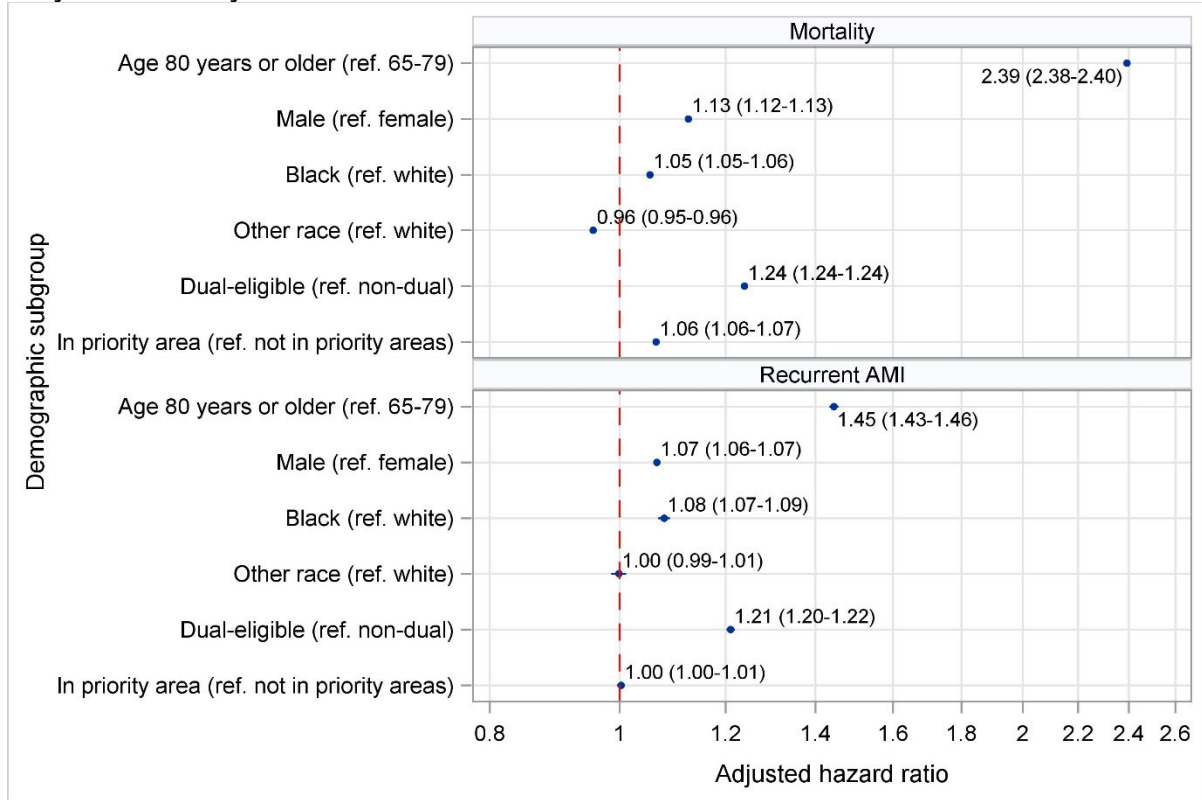
Abbreviations: CI, confidence interval.

**eFigure 1.** Distribution of mean age by demographic subgroups: 1995-2019

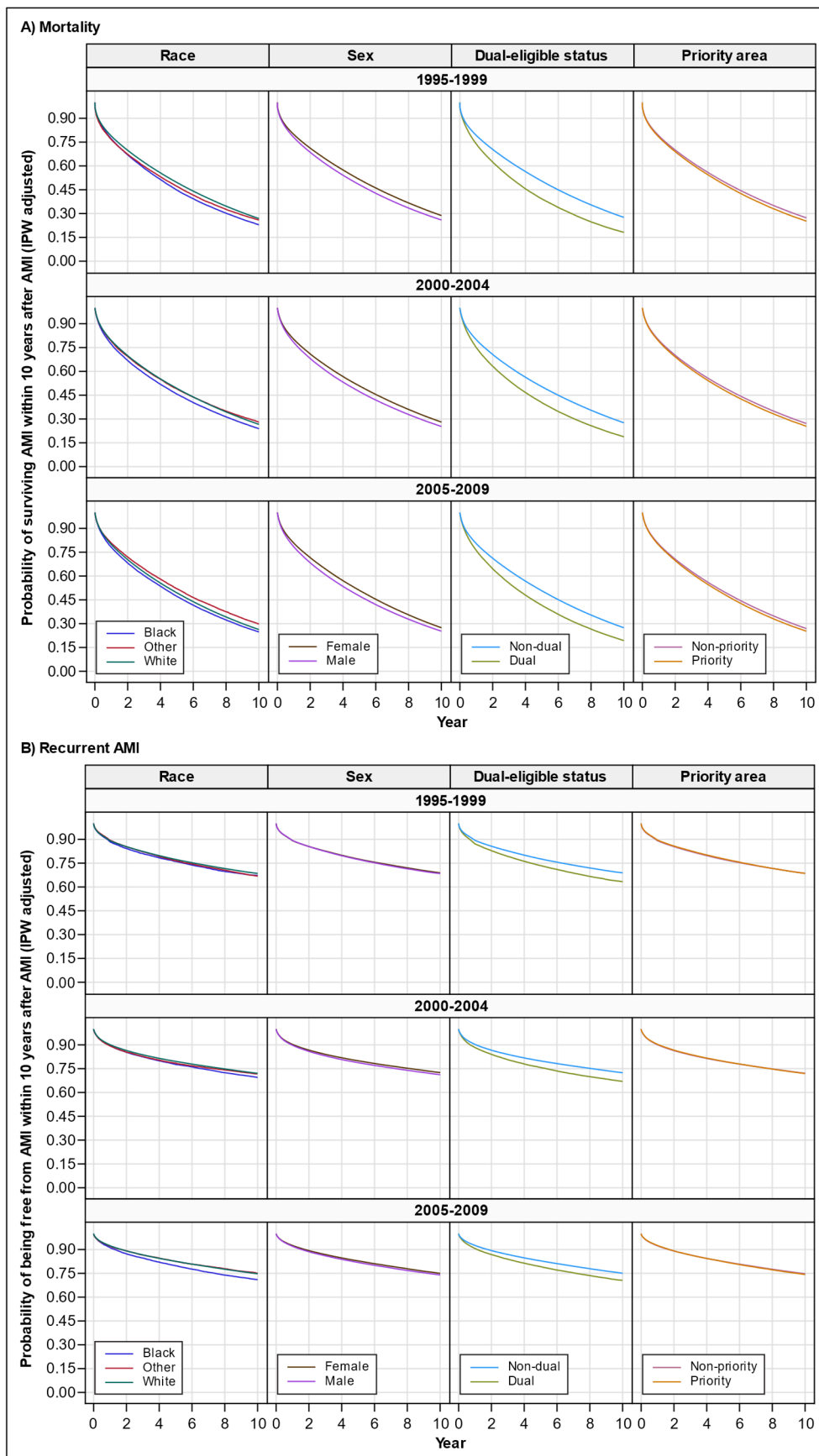




**eFigure 2.** Adjusted hazard ratios for the associations of demographic subgroups with 10-year mortality and recurrent AMI



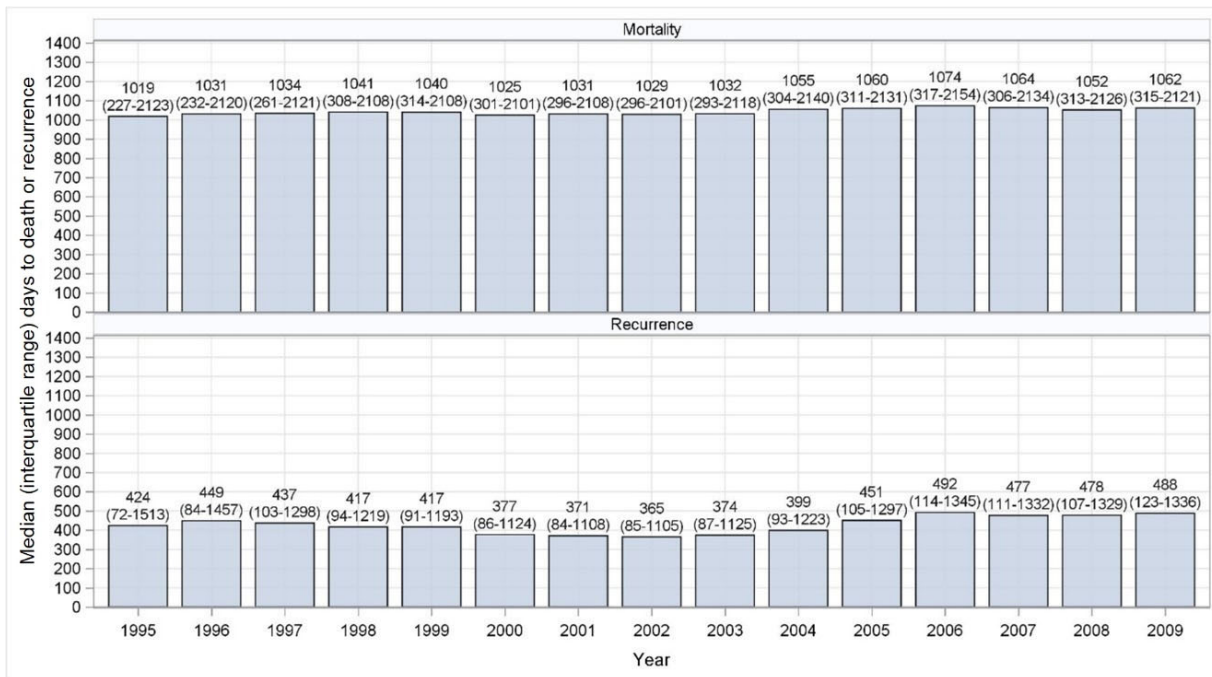
The forest plots summarize the adjusted hazard ratios and 95% confidence intervals for subgroup comparisons of 10-year mortality (top panel) and recurrent acute myocardial infarction (bottom panel). Other race includes Asian, Hispanic, North American Native, all other racial and ethnic groups, and unreported. Abbreviations: AMI, acute myocardial infarction.



**eFigure 3.** Adjusted Kaplan-Meier curves for 10-year mortality and recurrence by demographic subgroups: 1995-2009

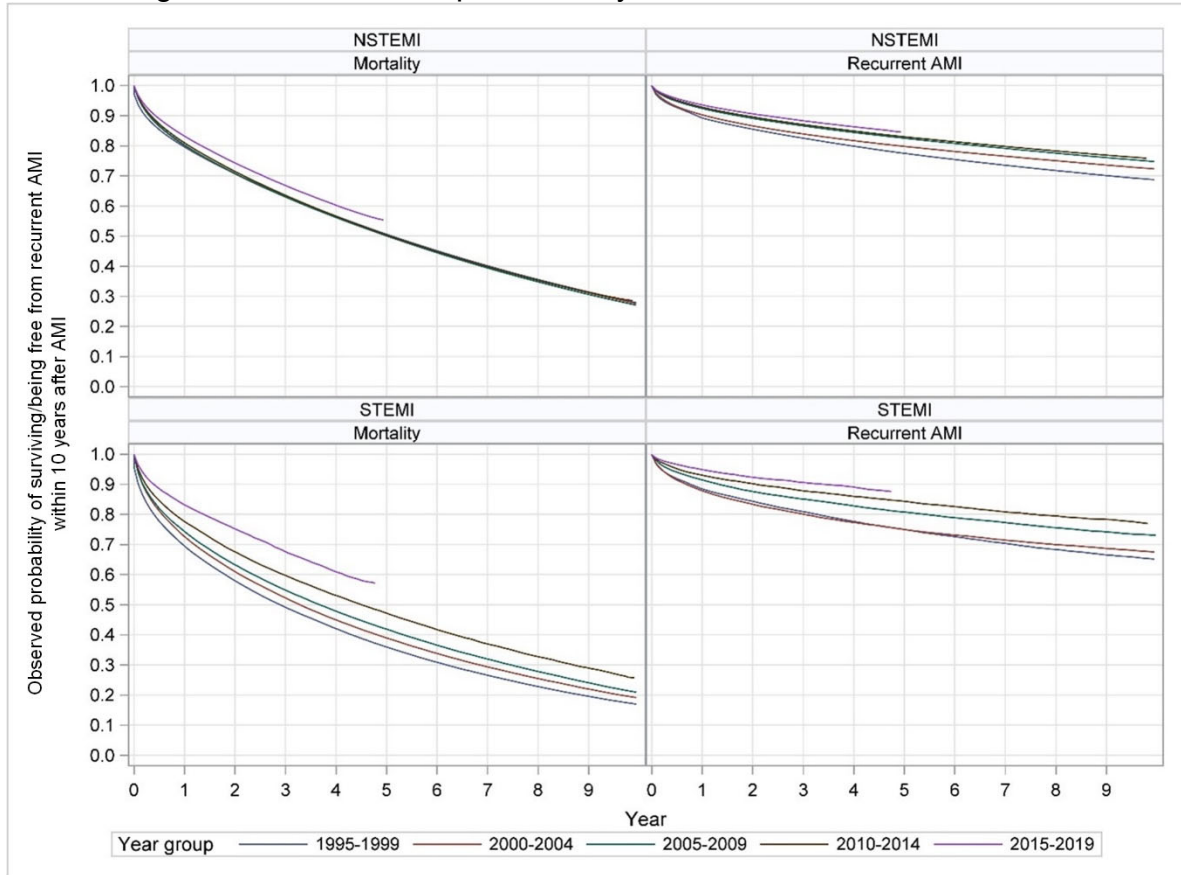
The inverse probability weight-adjusted Kaplan-Meier curves compare the probability of survival (top panel) and being free from recurrence (bottom panel) within 10 years after an initial acute myocardial infarction hospitalization for subgroups defined by race (Black, White, other race [Asian, Hispanic, North American Native, all other racial and ethnic groups, and unreported]), sex (male, female), dual Medicare-Medicaid eligibility (yes, no), and living in a health priority area (yes, no). Abbreviations: AMI, acute myocardial infarction; IPW, inverse probability weight.

**eFigure 4. Median days to death or recurrent AMI by index hospitalization year**



Data are for patients initially hospitalized with acute myocardial infarction from 1995 to 2009 (i.e., patients with the potential for a full 10 years of follow-up). The histograms display the median days to death among patients who died within 10 years (top panel) and the median days to a recurrent acute myocardial infarction among patients who had a recurrence within 10 years (bottom panel) by index hospitalization year.

**eFigure 5.** Observed Kaplan-Meier curves for 10-year mortality and recurrent AMI by STEMI diagnosis and index hospitalization year



The Kaplan-Meier curves compare the probability of survival (left panel) and being free from recurrence (right panel) within 10 years after an initial acute myocardial infarction hospitalization by index hospitalization year (1995–1999, 2000–2004, 2005–2009, 2010–2014, and 2015–2019) and diagnosis (STEMI, NSTEMI). Abbreviations: AMI, acute myocardial infarction; NSTEMI, non-ST-segment elevation myocardial infarction; STEMI, ST-segment elevation myocardial infarction.