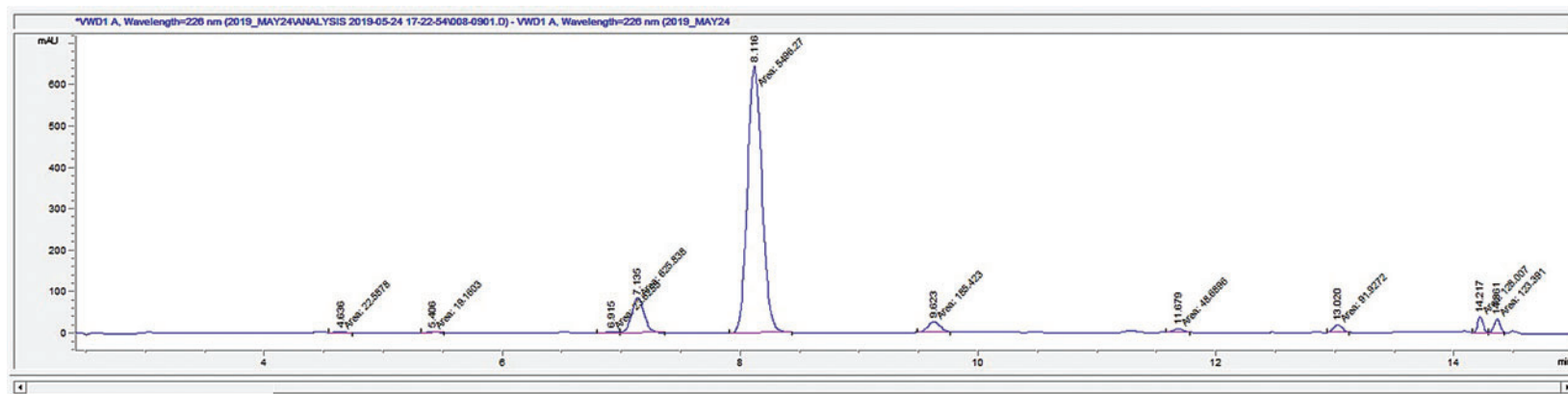


Supplementary Data



File Information

LC-File	008-0901.D
File Path	C:\CHEM32\1\DATA\2019_MAY24\ANALYSIS 2019-05-24 17-22-5
Date	24-May-19, 20:38:29
Sample	AR0413-2A
Sample Info	
Barcode	
Operator	NC
Method	PV001.M
Analysis Time	14.997 min
Sampling Rate	0.0012 min (0.072 sec), 12361 datapoints

#	Time	Area	Height	Width	Area%	Symmetry
1	4.636	22.6	3.4	0.1117	0.334	1.169
2	5.406	19.2	3.4	0.0949	0.283	0.984
3	6.915	23.6	3.6	0.1085	0.349	0.956
4	7.135	625.8	83.9	0.1243	9.251	0.935
5	8.116	5496.3	645.4	0.1419	81.247	0.896
6	9.623	185.4	25.1	0.1229	2.741	0.933
7	11.679	48.7	8.7	0.0932	0.720	1.057
8	13.020	91.9	18.6	0.0826	1.359	0.987
9	14.217	128	38.8	0.095	1.892	0.857
10	14.361	123.4	34.8	0.0591	1.824	1.072

SUPPLEMENTARY FIG. S1. A chromatogram of test sample containing (in order of elution) CBDV, CBDVA, CBG, CBD, CBDA, CBGA, THC, THCA, and CBCA. CBD, cannabidiol; CBDA, cannabidiolic acid; CBDV, cannabidivarin; CBDVA, cannabidivarin acid; CBCA, cannabichromenic acid; CBG, cannabigerol; CBGA, cannabigerolic acid; THC, Δ^9 -tetrahydrocannabinol; THCA, tetrahydrocannabinolic acid.