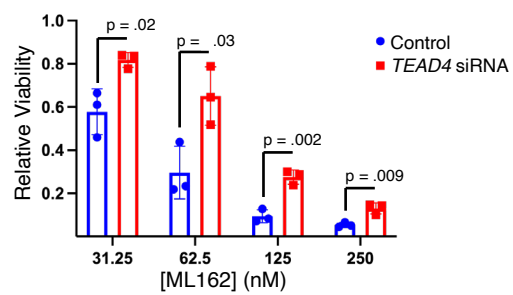


**Supplementary Figure S1.** Relative viability of BT-549 cells 72 h after transfection with siRNA targeting *TEAD4* or non-targeting siRNA (control) followed by 48 hour treatment with the indicated dose of ML162 (n=3 independent experiments). Error bars show standard deviation centered on the mean, and p-values are from two-sided Student's t-tests.

# Supplementary Figure 1

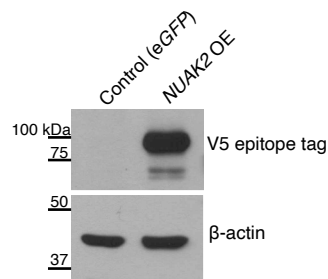
**a** BT-549



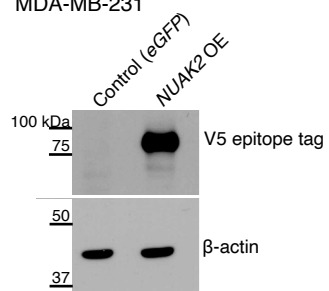
**Supplementary Figure S2.** (a) Western blot of the V5 epitope tag in BT-549 and (b) MDA-MB-231 cells stably over-expressing the V5-tagged-NUAK2 compared to a control line expressing eGFP ( $n = 1$  independent experiment for both cell lines). (c) Western blot of MDA-MB-231 cells transfected with cDNA encoding wild-type NUAK2 (representative of  $n = 3$  independent experiments). (d) Relative viability of these cells after 72 h incubation with the indicated dose of ML162 ( $n = 4$ ). Error bars denote standard deviation centered on the mean. p-values from Student's t-tests are shown.

## Supplementary Figure 2

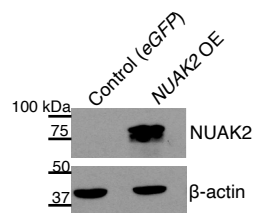
**a** BT-549



**b** MDA-MB-231



**c** MDA-MB-231



**d** MDA-MB-231

