

Supplementary Information

**Highly conductive and transparent copper nanowire electrodes on
surface coated flexible and heat-sensitive substrates**

Su Ding^{a,b}, Yanhong Tian^{a,*}, Jinting Jiu^{c,*}, Katsuaki Suganuma^c

^aState Key Laboratory of Advanced Welding and Joining, Harbin Institute of Technology, Harbin, 150001, China

^bCollege of Materials and Environmental Engineering, Hangzhou Dianzi University, Hangzhou, 310036, China

^cThe Institute of Scientific and Industrial Research (ISIR), Osaka University, Osaka 5650871, Japan

Corresponding authors: tianyh@hit.edu.cn, jiu@eco.sanken.osaka-u.ac.jp

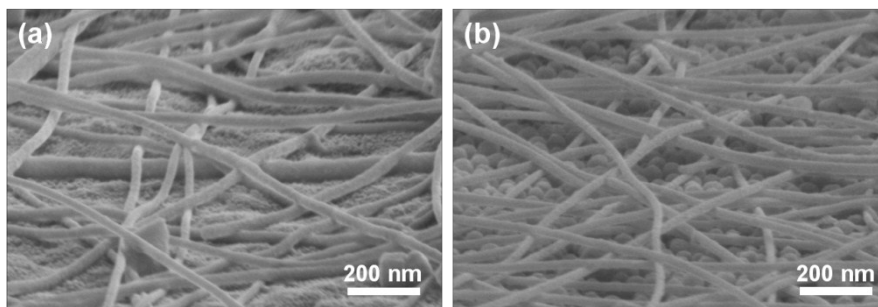


Fig. S1 Tilted SEM images of CuNW networks on N-PET and C-PET, respectively

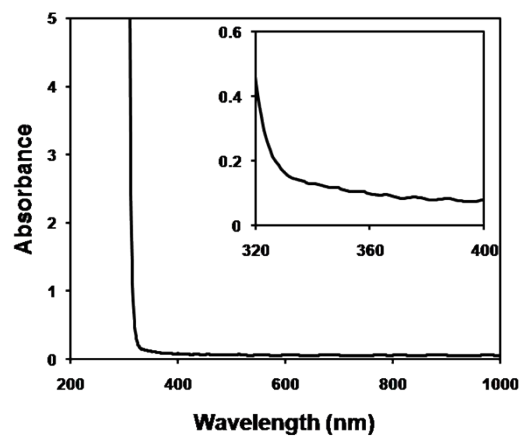


Fig. S2 Adsorption spectrum of N-PET polymer.

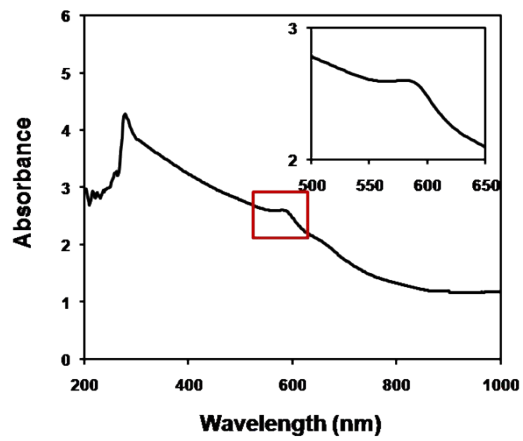


Fig. S3 Adsorption spectrum of CuNWs.

Tab. S1 Parameters of Cu and N-PET used in the simulation

Material name	Thermal conductivity (W/mK)	Mass density (g/cm ³)	Specific heat (J/kg)	Melt temperature (Degree)	Absorptivity (%)
Cu	401	8.96	382.5	1084.6	20
N-PET	0.24	1.4	730	370	-

Tab. S2 Parameters of the photonic sintering machine

Voltage (V)	Pulse duration (μs)	Pulse number	Pulse frequency (Hz)
750	30	10	1

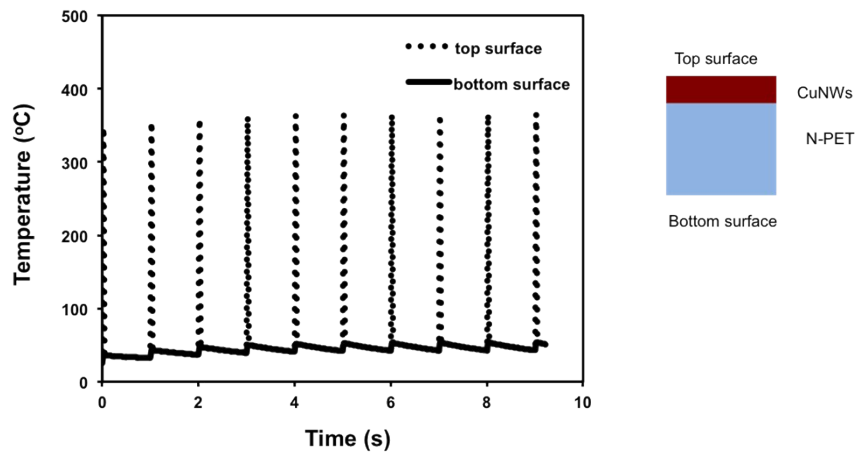


Fig. S4 Simulation result of the temperature evolution at the surface and the bottom of the CuNW transparent electrodes on N-PET substrate.

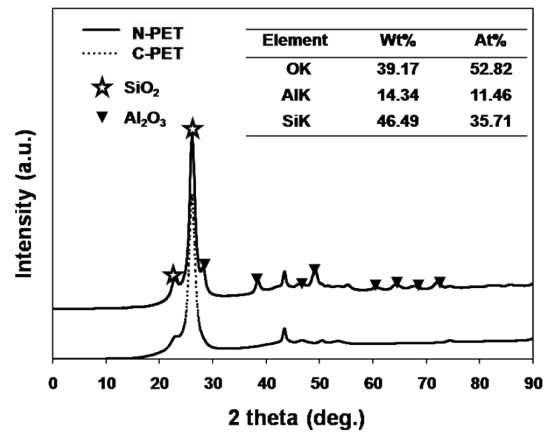


Fig. S5 XRD curves of N-PET and C-PET polymer. Inset is the quantity analysis result using energy dispersive spectrometer (EDS) result of C-PET.

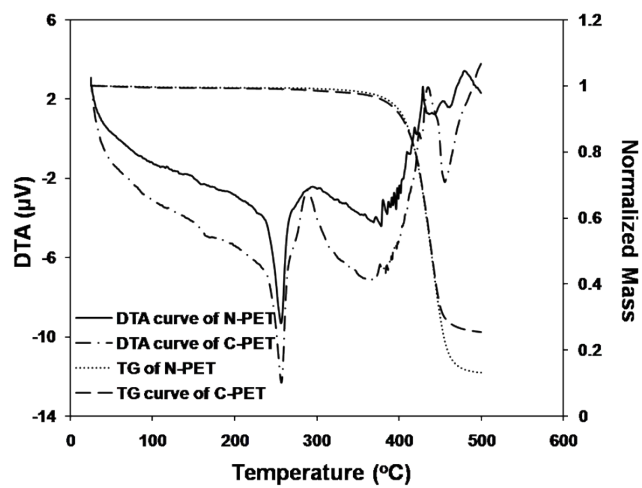


Fig. S6 DTA/TG curves of N-PET and C-PET polymer.

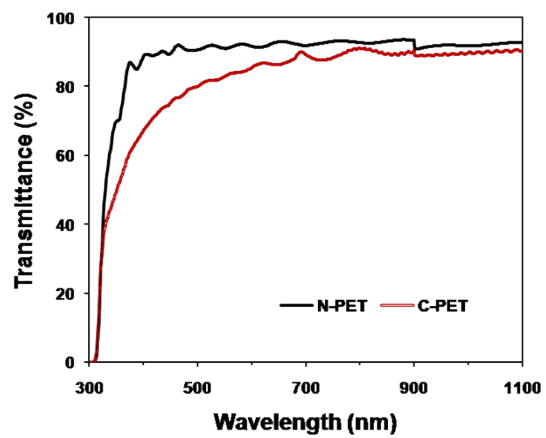


Fig. S7 Comparison of transmittance curves for bare N-PET and C-PET.