

**Screen Printed Carbon Electrode Modified with Carbon Nanotubes and Gold
Nanoparticles as a Sensitive Electrochemical Sensor for Determination of Thiamphenicol
Residue in Milk**

Supplementary data

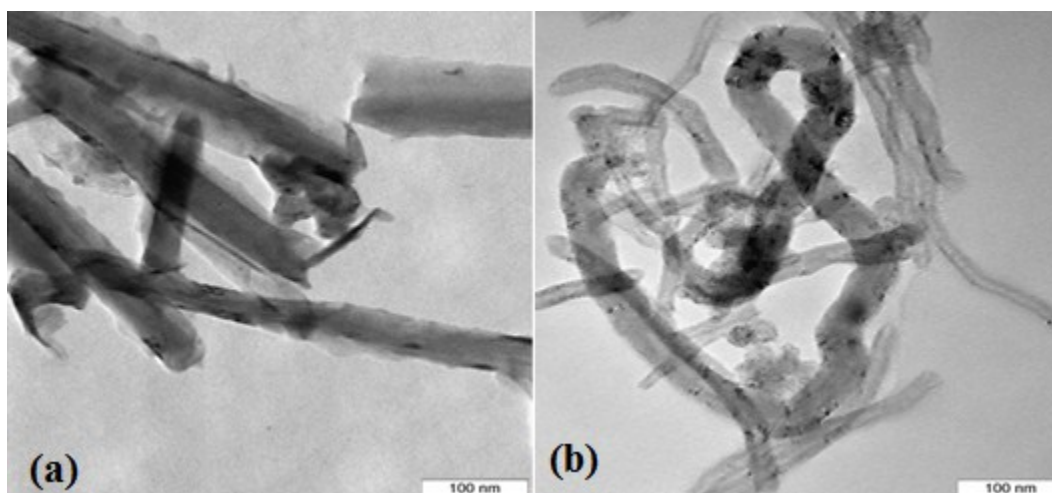


Fig. S1: TEM images of (a) SPE/CNTs and (b) SPE/CNTs/en/AuNPs.

