

Supplementary information

Albumin-assisted exfoliated ultrathin rhenium disulfide nanosheets as a tumor targeting and dual-stimuli-responsive drug delivery system for a combination chemo-photothermal treatment†

Qunlian Huang ^a, Shurong Wang ^a, Jie Zhou ^a, Xiaoyan Zhong ^a, and Yilan Huang ^{a*}

^a Department of Pharmacy, The Affiliated Hospital of southwest Medical University, Luzhou, Sichuan 646000, China.

*Correspondence: Yilan Huang

E-mail: hyl_medicine@163.com; Tel: +86-18982423710

† Electronic supplementary information (ESI) available

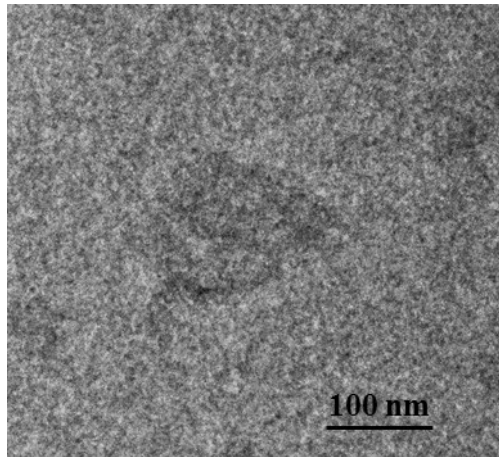


Figure S1 The TEM image of the utReS₂.

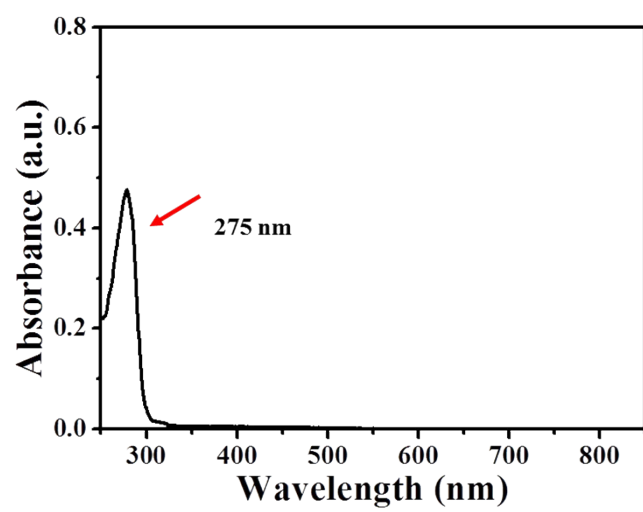


Figure S2 The absorbance spectrum of BSA.

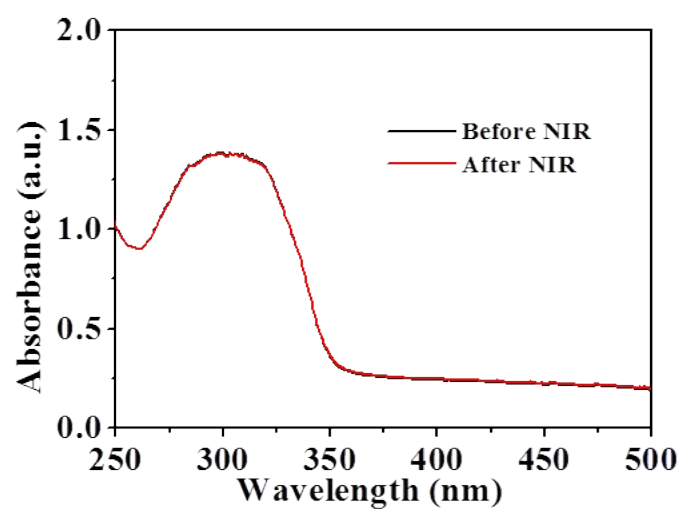


Figure S3 UV-vis spectroscopy of utReS₂@RSV-FA solution before and after the continuous irradiations of 808 nm laser for 5 cycles.

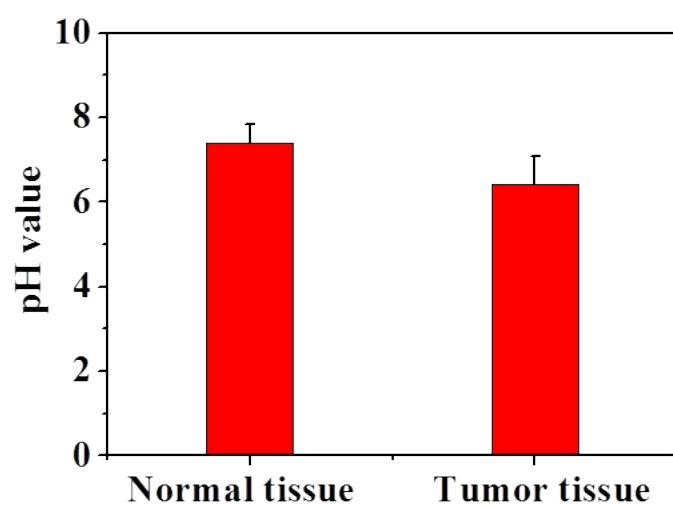


Figure S4 The pH value of normal and inner tumor tissue

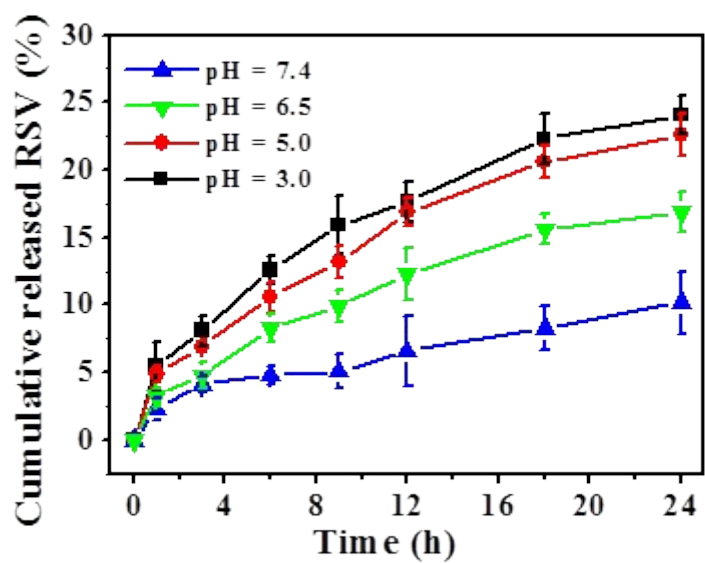


Figure S5 Release kinetics of RSV from utReS₂@RSV-FA in PBS buffer at pH = 7.4, 6.5, 5.0 and 3.0, respectively.

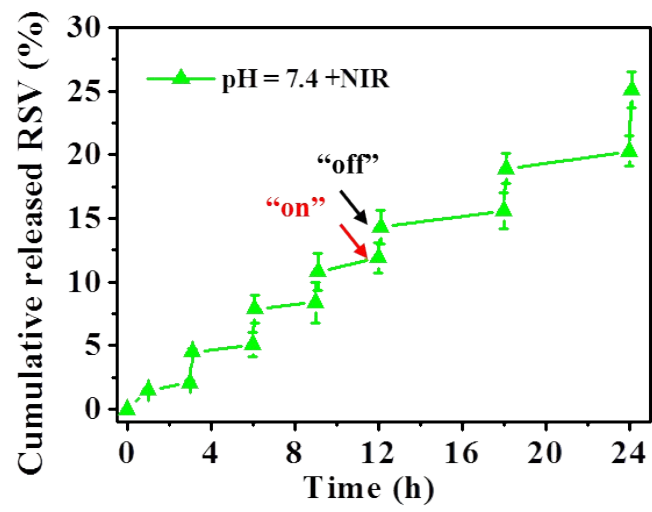


Figure S6 Release kinetic of RSV from $\text{utReS}_2\text{@RSV-FA}$ in PBS buffer (pH=7.4) in the presence of 808 nm NIR laser.