

Supplementary Informations

Sulfur compounds reactivity in the ODS of model and real feeds on W-SBA based catalysts.

G. Estephane,^a C. Lancelot,^{a*} P. Blanchard,^a J. Toufaily,^b T. Hamiyeb^b and C. Lamonier,^a

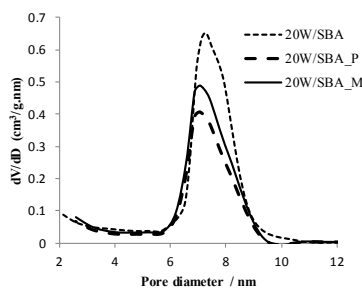


Figure SI 1: pore size distribution of catalyst 20W/SBA and of 20W/SBA_P and 20W/SBA_M (after test and washing with pentane and methanol).

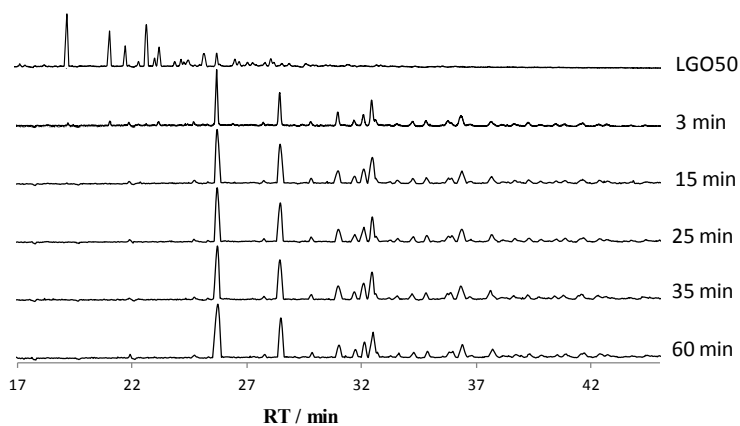


Figure SI 2: chromatograms of the reaction mixture in the ODS of LGO50 on 11W/SBA.

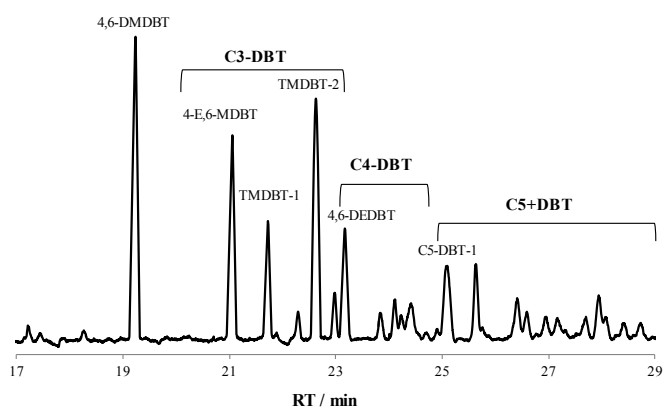


Figure SI 3: sulfide species identified for further monitoring of their evolution in the ODS of LGO50.

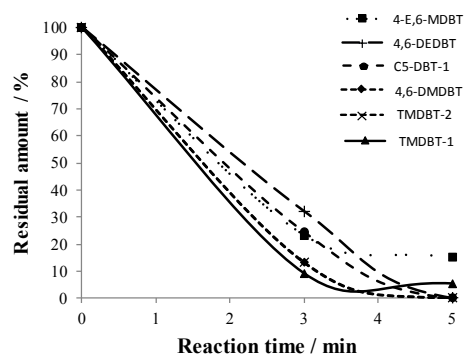


Figure SI 4: Percentages of residual concentrations of the 6 selected species in the ODS of LGO50 on 11W/SBA (evolution of 4,6-DMDBT and TMDBT-2 are superimposed).

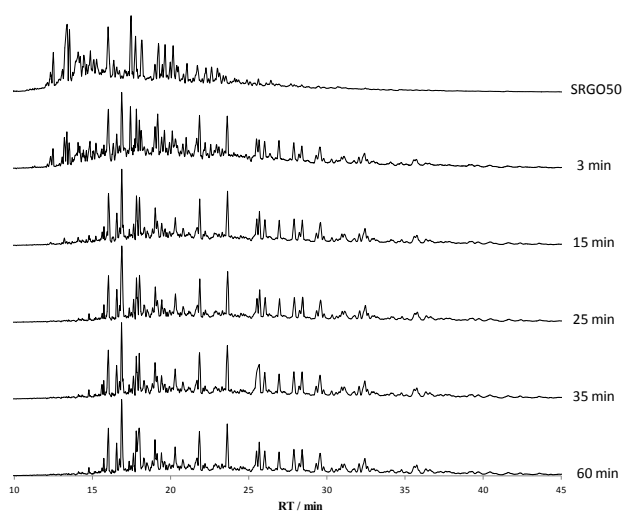


Figure SI 5: chromatograms of the reaction mixture in the ODS of SRGO2000 on 11W/SBA.

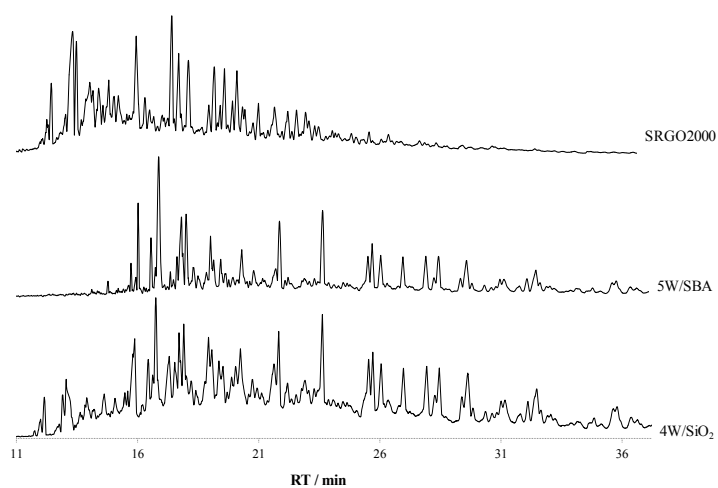


Figure SI 6: chromatograms of the reaction mixture in the ODS of SRGO2000 on 4W/SiO₂.

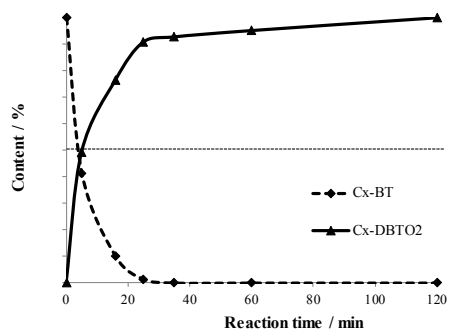


Figure SI 7: Evolution of Cx-BTs and Cx-DBT sulfones in the ODS of SRGO2000 on 11W/SBA.