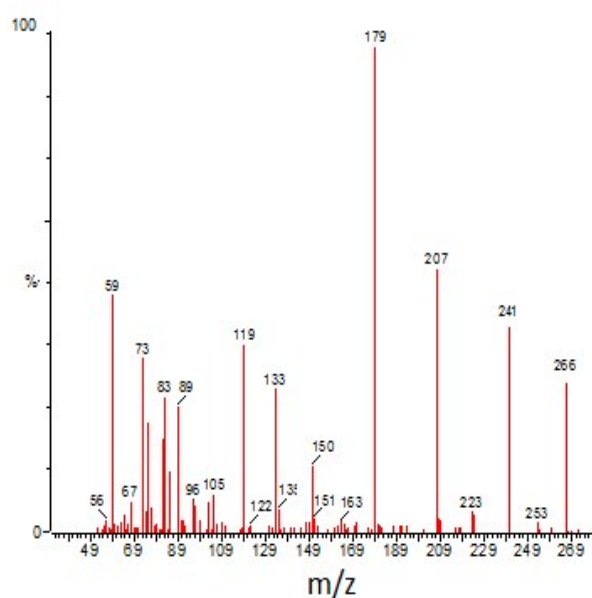
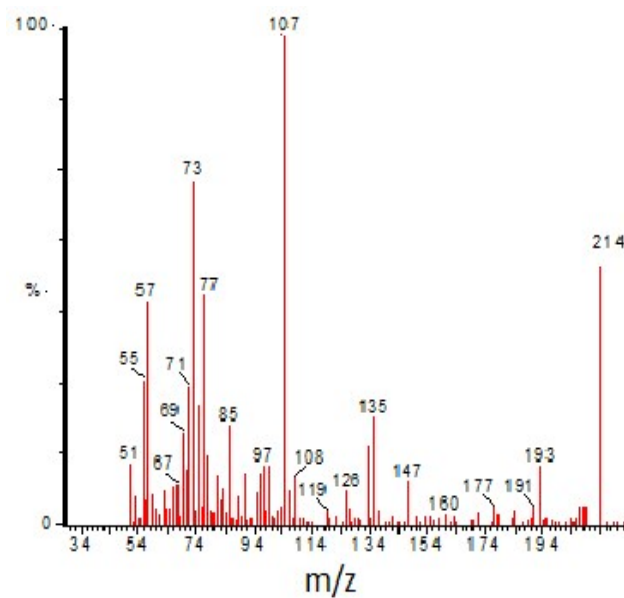


## 1 Supplementary Information (SI)

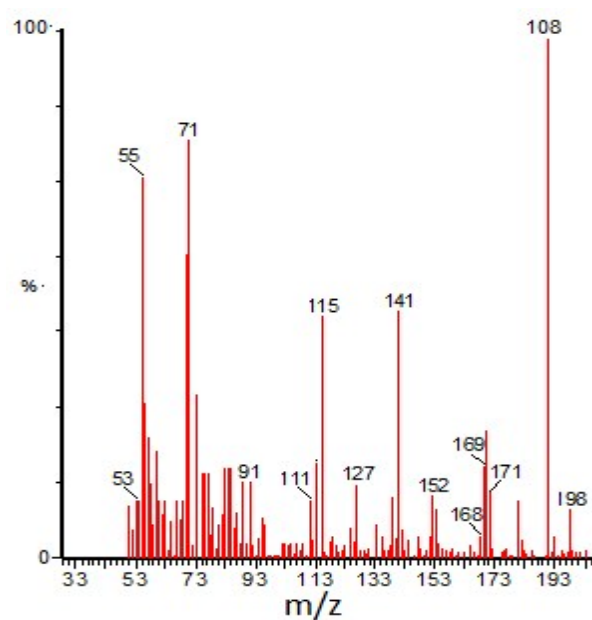
2



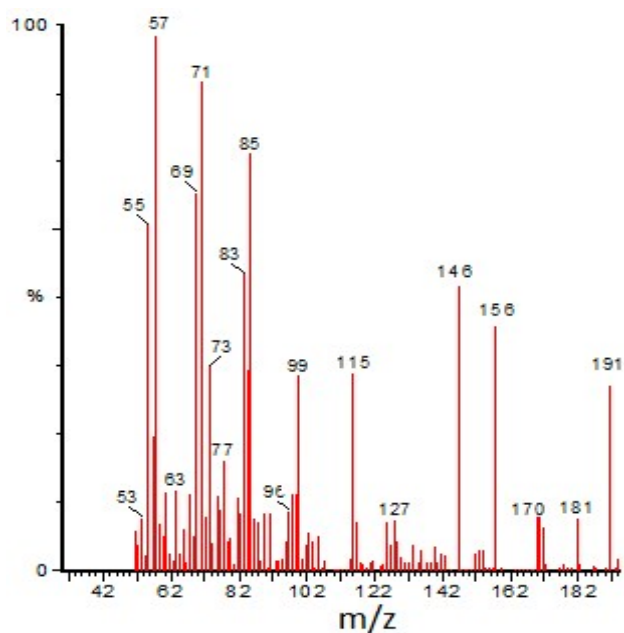
(a) Pure PCP m/z 266.5



(b) 2,3,6-Trichloroquinone m/z 213



(c) 2,4,6-TCP m/z 197



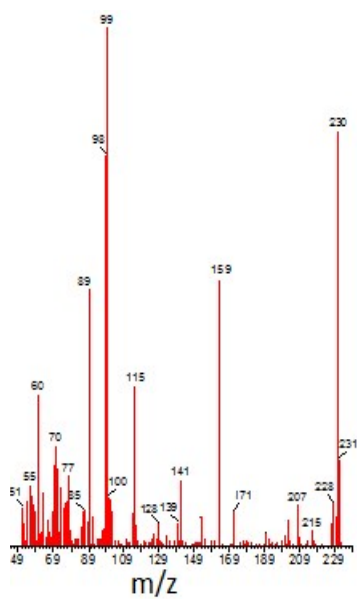
(d) Chloromaleyl acetic acid m/z 190

3

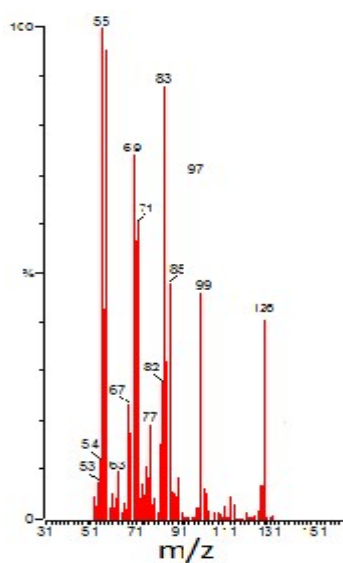
**Fig. 1S** MS Spectra of the metabolites of PCP formed under aerobic conditions

4

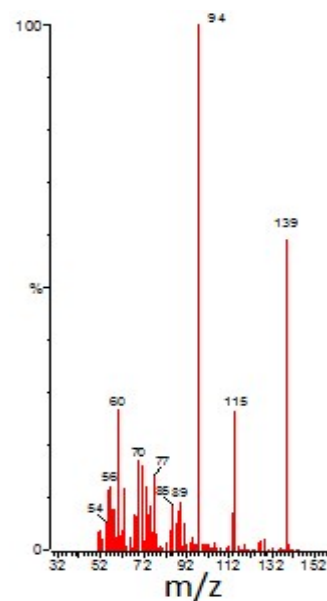
1



(a) 2,3,4,5-Tetrachlorophenol  
m/z 131



(b) 3-Chlorophenol  
m/z 126.5



(c) 4-Hydroxy benzoate  
m/z 138

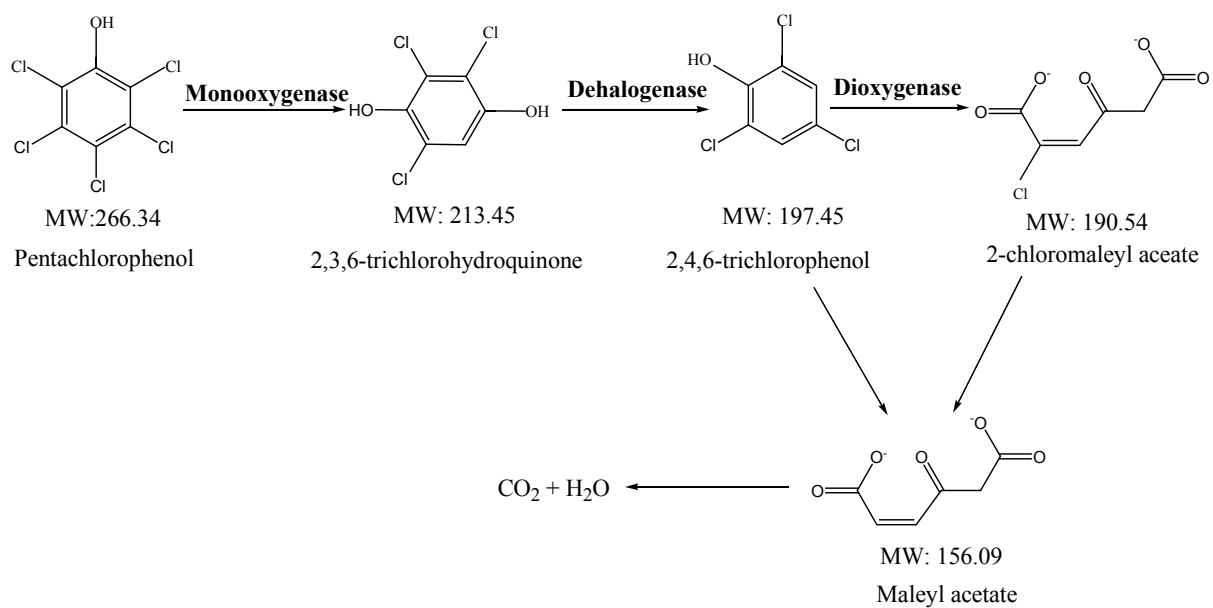
2

**Fig. 2S** MS Spectra of the metabolites of PCP formed under anaerobic

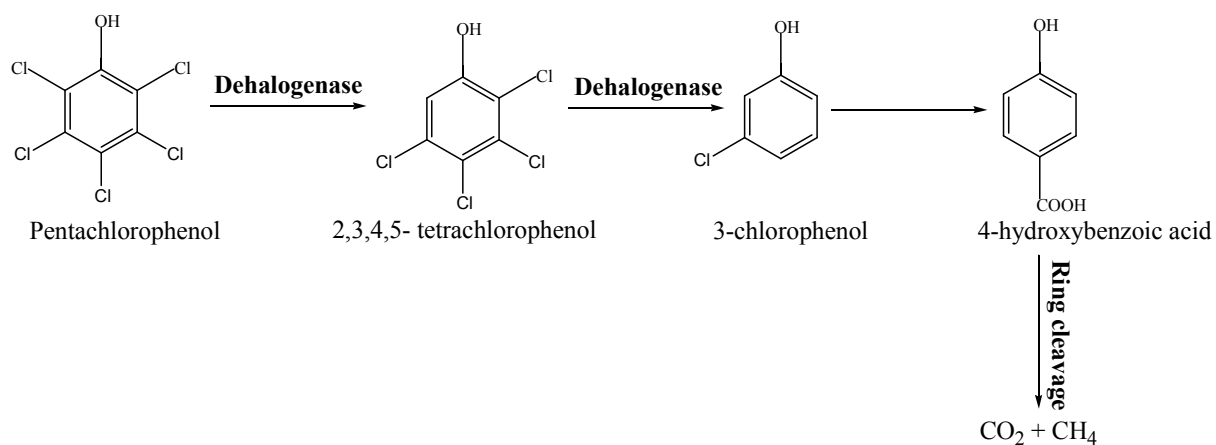
3

conditions

4



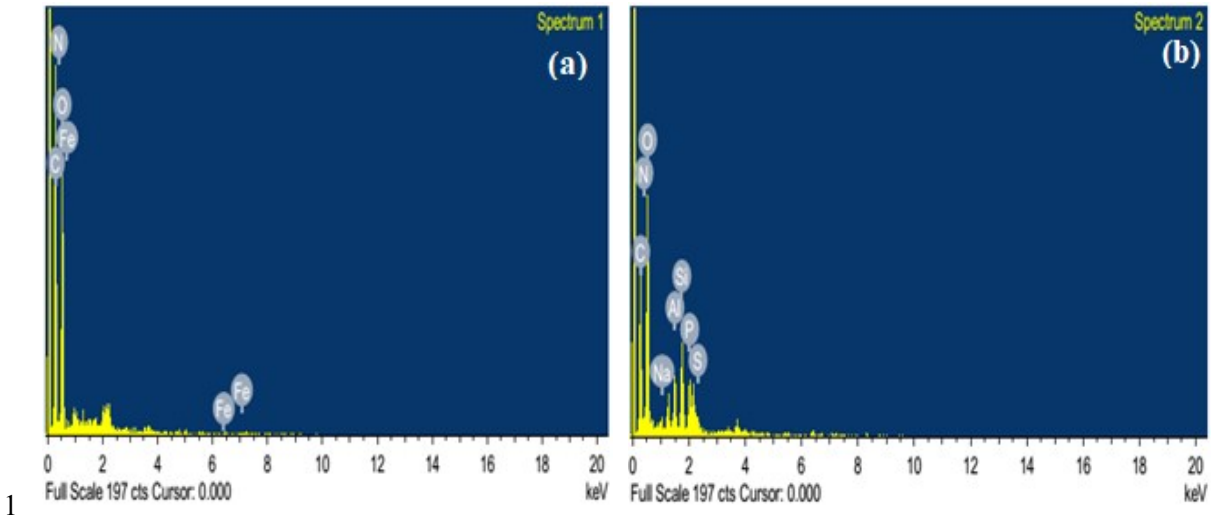
1  
2



3  
4

5 **Fig. 3S** Proposed degradation pathway of PCP under (a) aerobic conditions, and (b)  
6 anaerobic conditions

7



1

2

**Fig. 4S** EDX of microbial sludge of (a) SCMFC and (b) DCMFC

3

4

5

6

7