

SUPPLEMENTAL TABLES/FIGURES

Supplemental Table 1. Number of patients registered and number of patient visits by calendar month and area council.

Area	Abaji		Abuja Municipal Area Council		Bwari		Gwagwalada		Kuje		Kwali		Total	
	Registration	Visit	Registration	Visit	Registration	Visit	Registration	Visit	Registration	Visit	Registration	Visit	Registration	Visit
January	17	22	1	4	0	2	42	44	0	0	4	8	64	80
February	165	168	88	95	78	78	140	164	42	46	51	52	564	602
March	144	197	166	195	76	103	112	167	73	88	36	63	607	813
April	50	129	102	189	68	104	60	186	23	70	57	108	360	786
May	42	180	131	244	62	135	72	271	46	111	54	130	407	1071
June	120	368	183	358	102	190	166	428	39	154	55	146	665	1644
July	63	353	146	353	101	214	113	423	24	150	80	191	527	1684
August	45	302	136	345	65	176	109	497	24	170	56	192	435	1682
September	45	303	132	356	81	174	72	434	19	176	42	190	391	1633
October	51	358	114	301	80	225	69	408	20	174	28	158	362	1624
November	91	340	200	356	60	147	77	400	21	171	96	222	545	1636
Total	833	2720	1399	2796	773	1548	1032	3422	331	1310	559	1460	4927	13256

*Some patients' registration dates were not the same as the first visit dates. When there was a discrepancy, the first visit date was used to determine the starting period for study participation.

Supplemental Table 2. Hypertension treatment and control rate at the end of the first visit (i.e. rate when patients complete their visit) by calendar month and sex.

Month	Registered patients		Treatment Rate* (95% CI)			Control Rate (95% CI)		
	Male	Female	Male	Female	<i>P</i> -value	Male	Female	<i>P</i> -value
January	16	48	0.94 (0.80, 1.004)	0.75 (0.62, 0.88)	0.11	0.44 (0.16, 0.71)	0.23 (0.11, 0.35)	0.11
February	188	376	0.82 (0.77, 0.88)	0.85 (0.81, 0.88)	0.52	0.14 (0.09, 0.19)	0.23 (0.18, 0.27)	0.01
March	193	414	0.84 (0.79, 0.90)	0.91 (0.88, 0.94)	0.02	0.16 (0.11, 0.21)	0.21 (0.17, 0.25)	0.15
April	146	214	0.92 (0.87, 0.96)	0.92 (0.88, 0.95)	0.95	0.12 (0.07, 0.18)	0.12 (0.08, 0.17)	0.96
May	159	248	0.93 (0.89, 0.97)	0.88 (0.84, 0.92)	0.09	0.11 (0.06, 0.16)	0.14 (0.10, 0.18)	0.31
June	201	464	0.88 (0.83, 0.92)	0.84 (0.81, 0.87)	0.24	0.10 (0.06, 0.15)	0.11 (0.08, 0.14)	0.77
July	192	335	0.88 (0.83, 0.93)	0.87 (0.83, 0.91)	0.70	0.07 (0.03, 0.10)	0.10 (0.07, 0.14)	0.16
August	143	292	0.94 (0.91, 0.98)	0.87 (0.83, 0.91)	0.02	0.14 (0.08, 0.20)	0.12 (0.09, 0.16)	0.63
September	106	285	0.92 (0.87, 0.98)	0.94 (0.91, 0.97)	0.66	0.11 (0.05, 0.17)	0.11 (0.08, 0.15)	0.98
October	101	261	0.97 (0.94, 1.004)	0.95 (0.93, 0.98)	0.49	0.06 (0.01, 0.11)	0.10 (0.06, 0.13)	0.27
November	197	348	0.94 (0.91, 0.98)	0.93 (0.90, 0.95)	0.40	0.08 (0.04, 0.11)	0.09 (0.06, 0.13)	0.46
Total	1642	3285	0.90 (0.88, 0.91)	0.89 (0.88, 0.90)	0.23	0.11 (0.10, 0.13)	0.14 (0.13, 0.15)	0.01

* Treatment rate at the end of the baseline visit can also be considered the rate when patients complete their visit.

Supplemental Table 3. Baseline hypertension treatment and control rates (95% CI) at the end of the baseline visit, overall and by sex and area council.

Area	Treatment Rate* (95% CI)			Control Rate (95% CI)		
	Male	Female	P-value	Male	Female	P-value
Abaji	0.90 (0.87, 0.93)	0.92 (0.90, 0.95)	0.27	0.22 (0.18, 0.27)	0.30 (0.26, 0.34)	0.03
Abuja Municipal Area Council	0.88 (0.85, 0.91)	0.89 (0.86, 0.90)	0.87	0.11 (0.08, 0.14)	0.12 (0.10, 0.14)	0.07
Bwari	0.88 (0.84, 0.92)	0.89 (0.86, 0.92)	0.62	0.04 (0.01, 0.06)	0.08 (0.06, 0.10)	0.02
Gwagwalada	0.90 (0.87, 0.93)	0.84 (0.81, 0.87)	0.01	0.13 (0.09, 0.16)	0.13 (0.11, 0.16)	0.84
Kuje	0.90 (0.85, 0.95)	0.87 (0.83, 0.92)	0.48	0.14 (0.08, 0.20)	0.16 (0.11, 0.22)	0.60
Kwali	0.95 (0.92, 0.97)	0.95 (0.93, 0.97)	0.82	0.04 (0.02, 0.08)	0.03 (0.01, 0.05)	0.51
Total	0.90 (0.88, 0.91)	0.89 (0.88, 0.90)	0.23	0.11 (0.10, 0.13)	0.14 (0.13, 0.15)	0.01

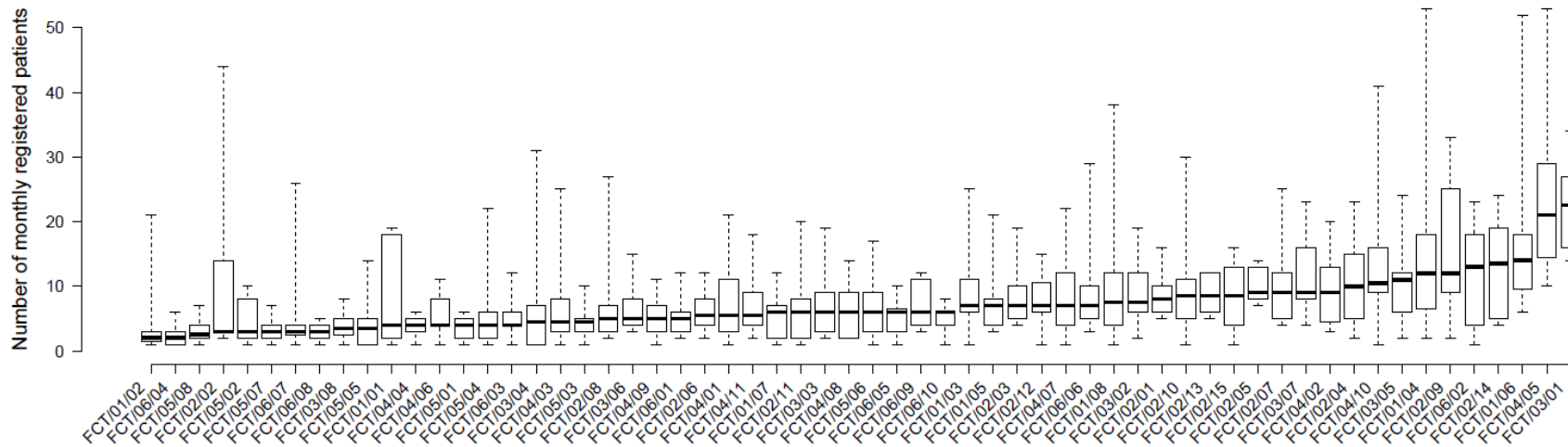
* Treatment rate at the end of the baseline visit can also be considered the rate when patients complete their visit.

Supplemental Table 4. Mixed-effect, multivariable logistic regression models to evaluate predictors of hypertension treatment and control status at the start of the baseline visit.

Variables	Baseline Treatment			Baseline Control		
	Model 1	Model 2	Model 3	Model 1	Model 2	Model 3
	Unadjusted OR (95%CI)	Adjusted* OR (95%CI)	Adjusted [†] OR (95%CI)	Unadjusted OR (95%CI)	Adjusted* OR (95%CI)	Adjusted [†] OR (95%CI)
Age, by year	1.015 (1.01, 1.02)	1.016 (1.01, 1.02)	1.02 (1.01, 1.03)	1.023 (1.02, 1.03)	1.025 (1.02, 1.03)	1.014 (1.01, 1.02)
Sex						
Male	Reference	Reference	Reference	Reference	Reference	Reference
Female	0.996 (0.88, 1.12)	1.08 (0.95, 1.22)	1.12 (0.95, 1.32)	1.26 (1.05, 1.52)	1.43 (1.18, 1.72)	1.30 (1.05, 1.62)
BMI, by kg/m ²	1.02 (1.01, 1.03)	1.02 (1.01, 1.03)	1.02 (1.003, 1.03)	1.01 (0.99, 1.02)	1.01 (0.997, 1.03)	1.003 (0.99, 1.02)
Alcohol use						
Non-current user	Reference	Reference	Reference	Reference	Reference	Reference
Current user	0.65 (0.50, 0.86)	0.64 (0.48, 0.85)	0.71 (0.50, 1.02)	0.71 (0.45, 1.12)	0.78 (0.49, 1.23)	0.76 (0.46, 1.27)
Use of fixed-dose combination‡						
No		Non-Estimable		Reference	Reference	Reference
Yes		Non-Estimable		2.38 (2.004, 2.82)	2.22 (1.87, 2.64)	1.83 (1.49, 2.26)
Education§						
Never attended school	Reference	Reference	Reference	Reference	Reference	Reference
Primary School	1.20 (1.01, 1.41)	1.36 (1.15, 1.62)	1.45 (1.15, 1.80)	0.90 (0.71, 1.14)	1.08 (0.84, 1.38)	1.15 (0.87, 1.53)
Secondary School	1.13 (0.97, 1.32)	1.46 (1.23, 1.72)	1.39 (1.11, 1.75)	0.55 (0.43, 0.71)	0.77 (0.59, 1.01)	0.94 (0.69, 1.29)
High school	1.19 (0.87, 1.61)	1.43 (1.05, 1.96)	1.62 (1.10, 2.39)	1.001 (0.65, 1.53)	1.32 (0.85, 2.04)	1.69 (1.05, 2.73)
College/University	1.35 (1.14, 1.59)	1.69 (1.42, 2.02)	1.93 (1.53, 2.46)	0.94 (0.75, 1.19)	1.31 (1.02, 1.68)	1.37 (1.01, 1.85)
Professional Degree	1.88 (1.31, 2.72)	2.23 (1.54, 3.25)	2.29 (1.44, 3.68)	1.86 (1.23, 2.80)	2.43 (1.60, 3.70)	1.87 (1.14, 3.06)
Other	4.38 (2.13, 9.02)	5.16 (2.50, 10.67)	3.29 (1.41, 7.69)	2.16 (1.17, 3.97)	2.80 (1.50, 5.21)	2.04 (1.03, 4.05)

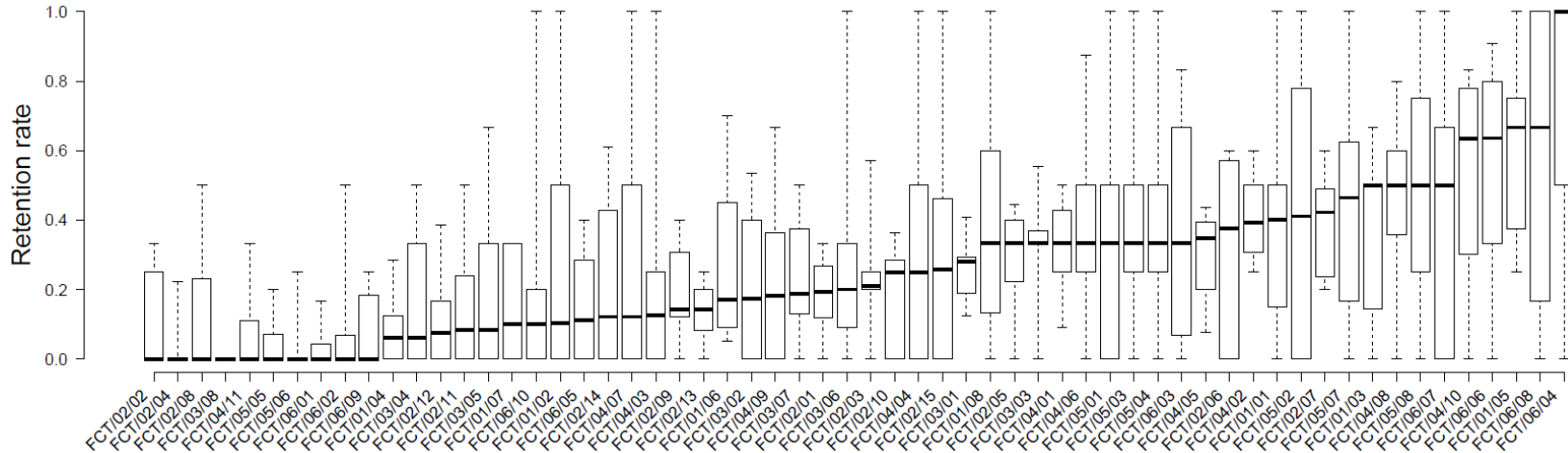
Variables	Baseline Treatment			Baseline Control		
	Model 1	Model 2	Model 3	Model 1	Model 2	Model 3
Area						
Abaji	Reference	Reference	Reference	Reference	Reference	Reference
Abuja Municipal Area Council	0.76 (0.63, 0.92)	0.87 (0.72, 1.05)	0.98 (0.22, 4.27)	0.34 (0.27, 0.43)	0.39 (0.31, 0.49)	0.41 (0.18, 0.92)
Bwari	0.35 (0.28, 0.43)	0.38 (0.31, 0.47)	0.35 (0.07, 1.90)	0.19 (0.14, 0.26)	0.21 (0.15, 0.29)	0.24 (0.09, 0.64)
Gwagwalada	0.43 (0.35, 0.52)	0.46 (0.38, 0.55)	0.38 (0.08, 1.80)	0.40 (0.31, 0.50)	0.42 (0.33, 0.54)	0.45 (0.19, 1.09)
Kuje	0.42 (0.32, 0.55)	0.45 (0.34, 0.58)	0.28 (0.05, 1.49)	0.48 (0.35, 0.68)	0.53 (0.38, 0.74)	0.47 (0.17, 1.27)
Kwali	0.49 (0.39, 0.61)	0.53 (0.42, 0.67)	0.33 (0.06, 1.74)	0.10 (0.06, 0.16)	0.11 (0.07, 0.18)	0.13 (0.05, 0.38)

*Adjusted for age and sex. †Adjusted for age, sex, BMI, alcohol use, fixed-dose combination, education, and primary health care center (random effect). ‡ Fixed-dose combination at the start of the baseline visit, also known as “walk-in” period. § $P_{trend} < 0.001$ across levels of education for walk-in hypertension treatment rate; $P_{trend} = 0.14$ across levels of education for hypertension control rate. ¶“Other” includes Arabic school, Islamic school, Bible school, etc.

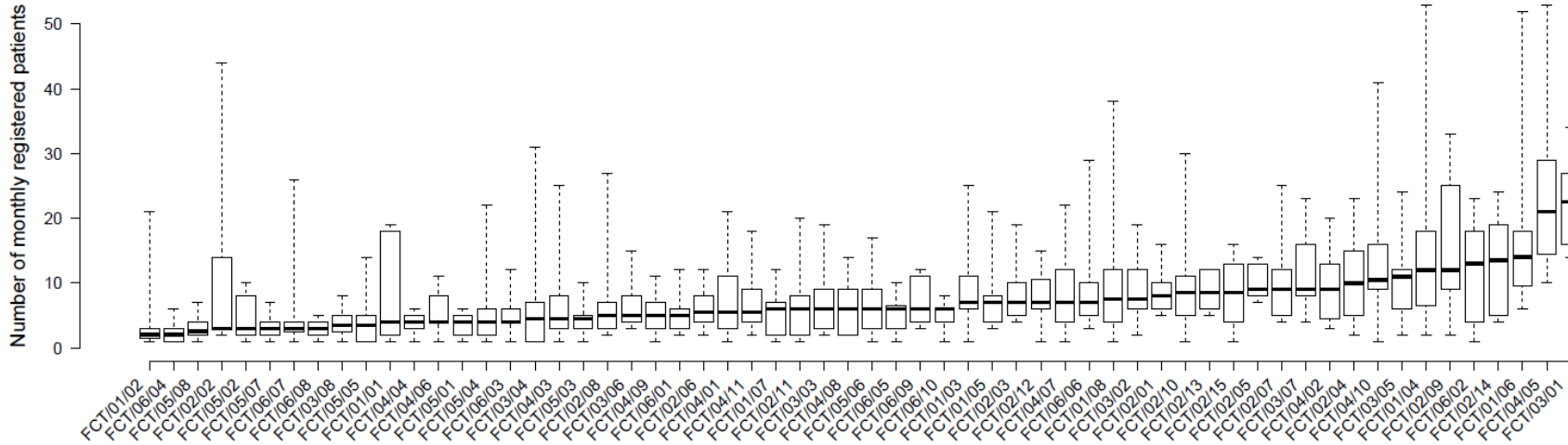


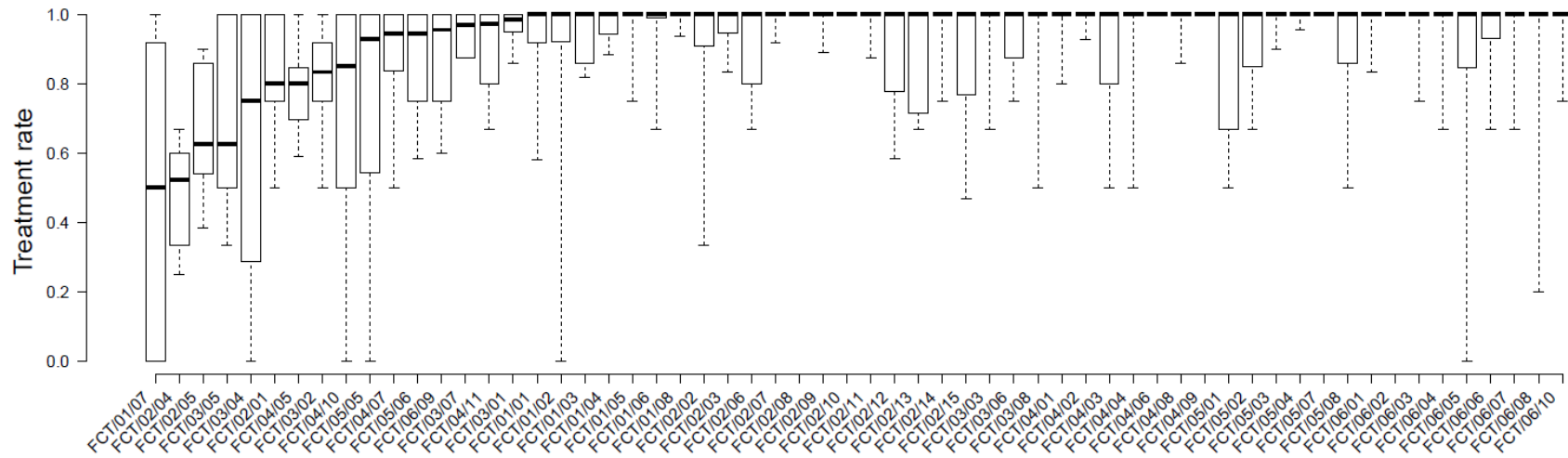
Supplemental Figure 1. Monthly registered patients by primary health care center. Median number of monthly registered patients for baseline was 7 (IQR: 4 – 9).

Supplemental Figure 2a. Mean 31-day retention rate between baseline and follow-up visit by primary health care center was 25% (95% CI: 20% – 31%).

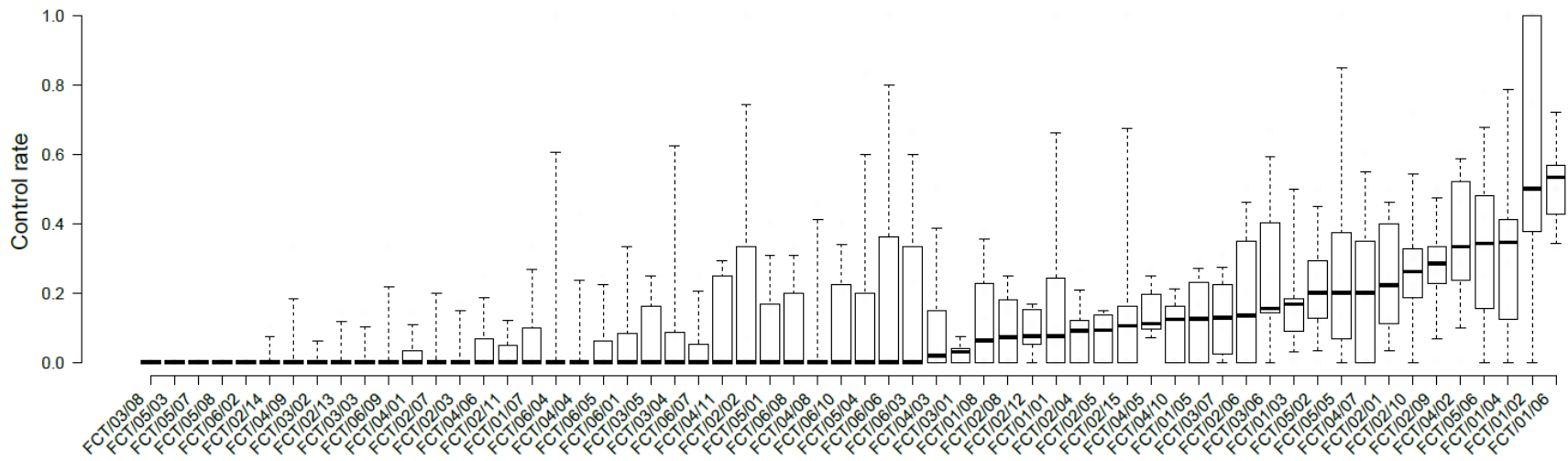


Supplemental Figure 2b. Mean 37-day retention rate between baseline and follow-up visit by primary health care center was 39% (95% CI: 32% – 45%).





Supplemental Figure 3. Baseline hypertension treatment rate (monthly) by primary health care center. Mean treatment rate at baseline was 0.89 (95% CI: 0.88 – 0.90).



Supplemental Figure 4. Baseline hypertension control rate (monthly) by primary health care center. Mean control rate at baseline was 0.13 (95% CI: 0.12 – 0.14).