

Supplementary Information: Characterization of Retinal Function & Structure in the MPTP Murine Model of Parkinson's Disease

*Katie KN Tran*¹, *Vickie HY Wong*¹, *Jeremiah KH Lim*^{1*}, *Ali Shahandeh*¹, *Anh Hoang*¹, *David I. Finkelstein*², *Bang V. Bui*¹, *Christine T.O. Nguyen*^{1#}

¹ Ocular Biomarkers Laboratory, Department of Optometry and Vision Sciences, University of Melbourne, Parkville, 3010, Victoria, Australia.

² Parkinson's Disease Laboratory, The Florey Institute of Neuroscience and Mental Health, The University of Melbourne, Parkville, 3010, Victoria, Australia.

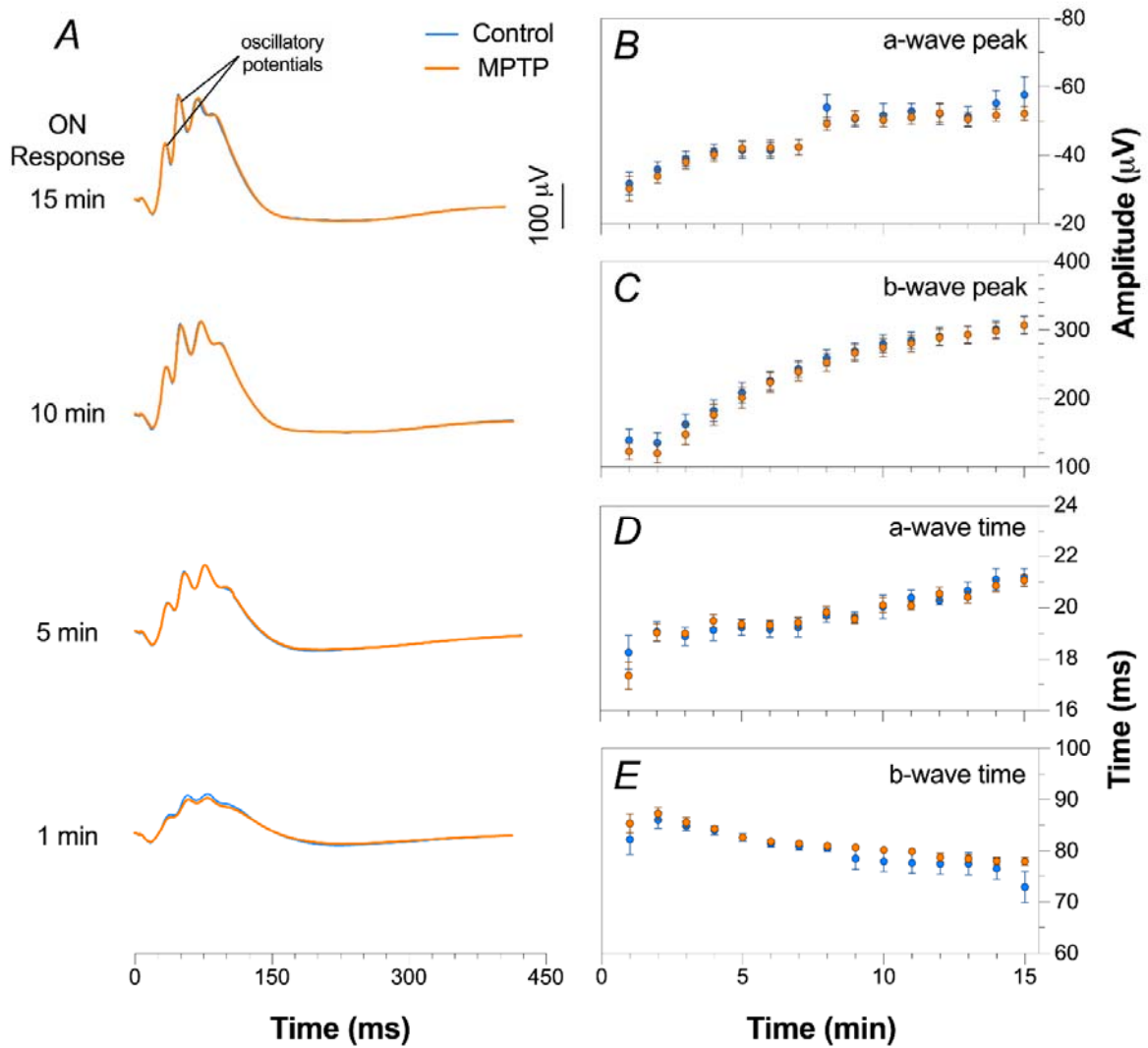
*Current address: Caring Futures Institute, College of Nursing and Health Sciences, Flinders University, Bedford Park, 5042, South Australia, Australia

#Correspondence: Christine TO Nguyen: Department of Optometry and Vision Sciences, University of Melbourne, Parkville, 3010, Victoria, Australia.

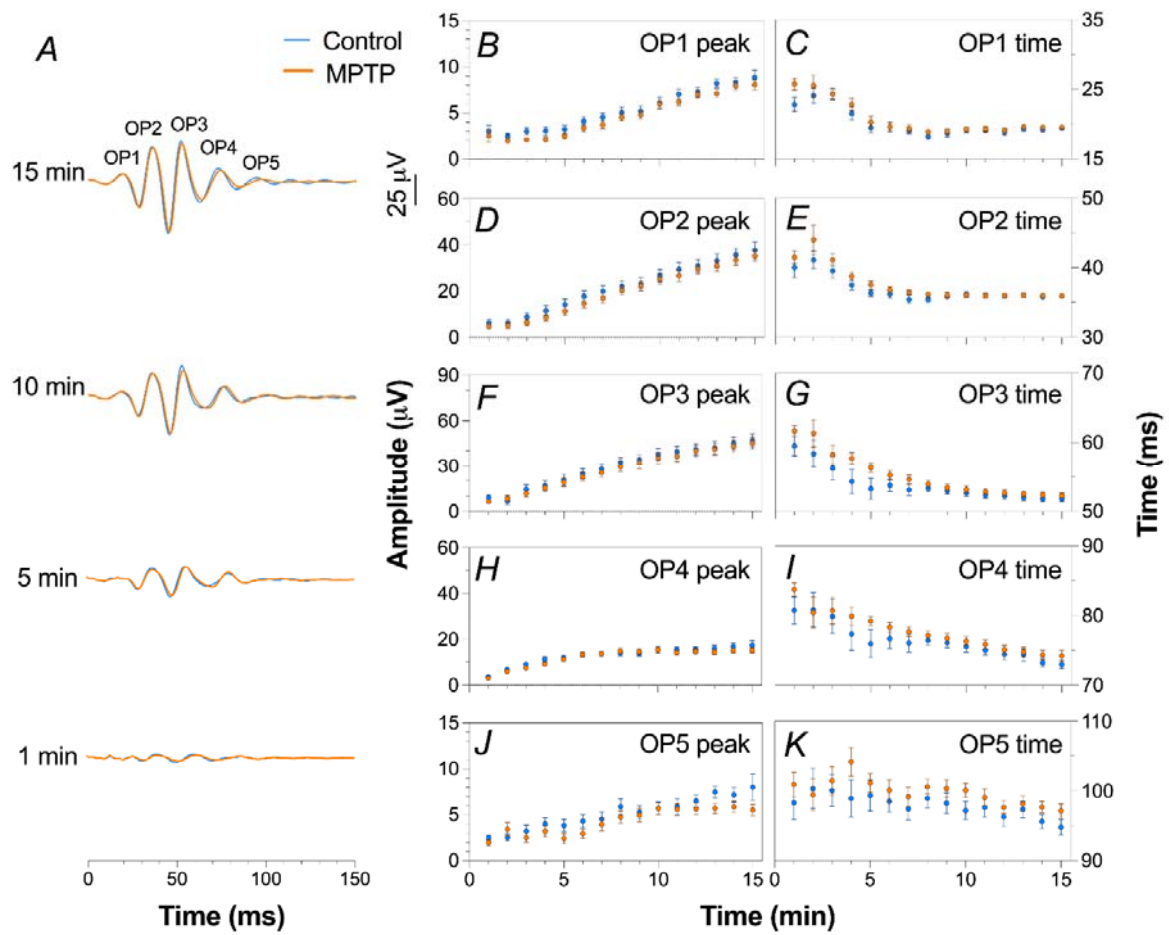
Ph: +61 3 9035 3186

E: christine.nguyen@unimelb.edu.au

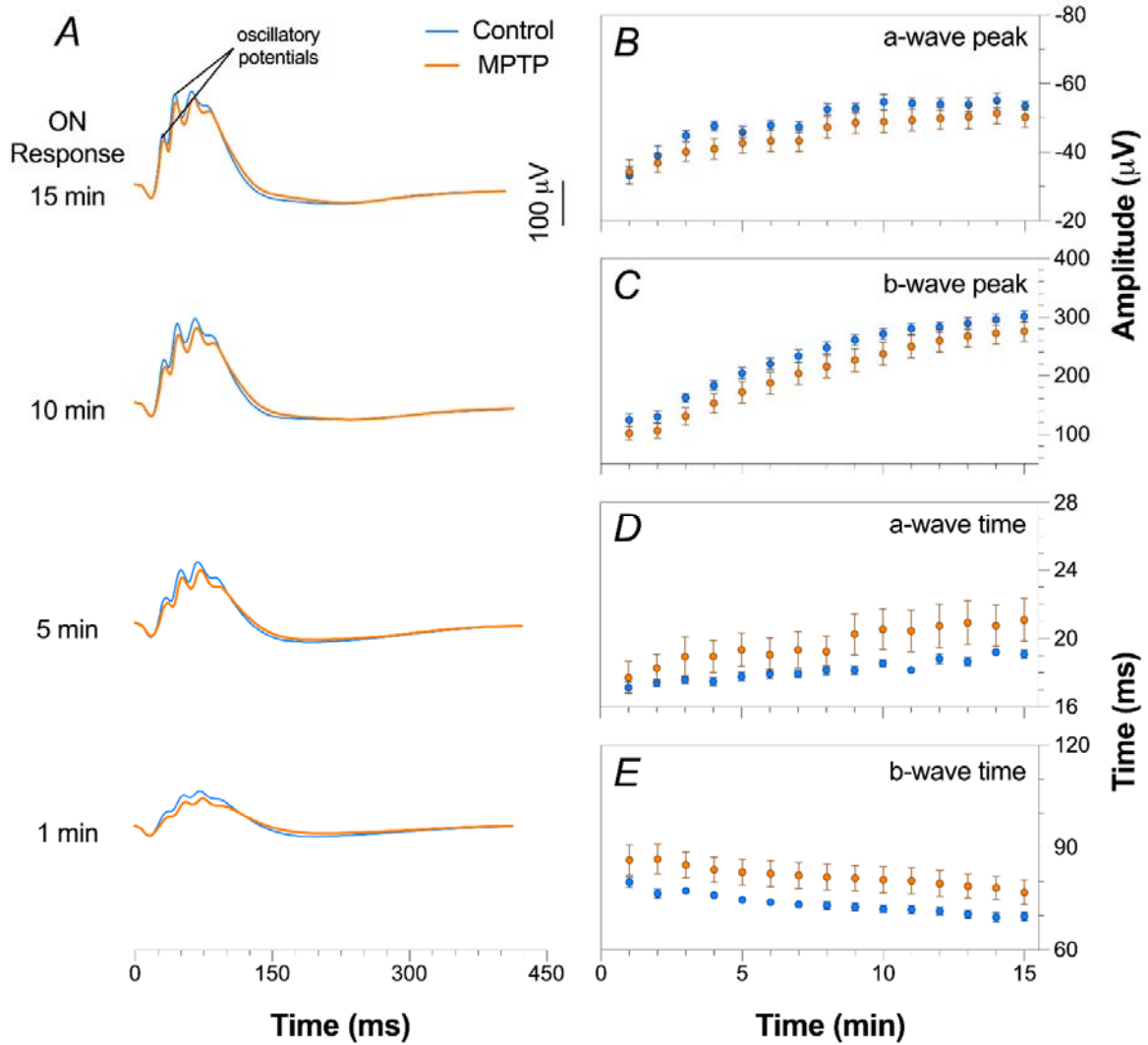
Supplementary Figures



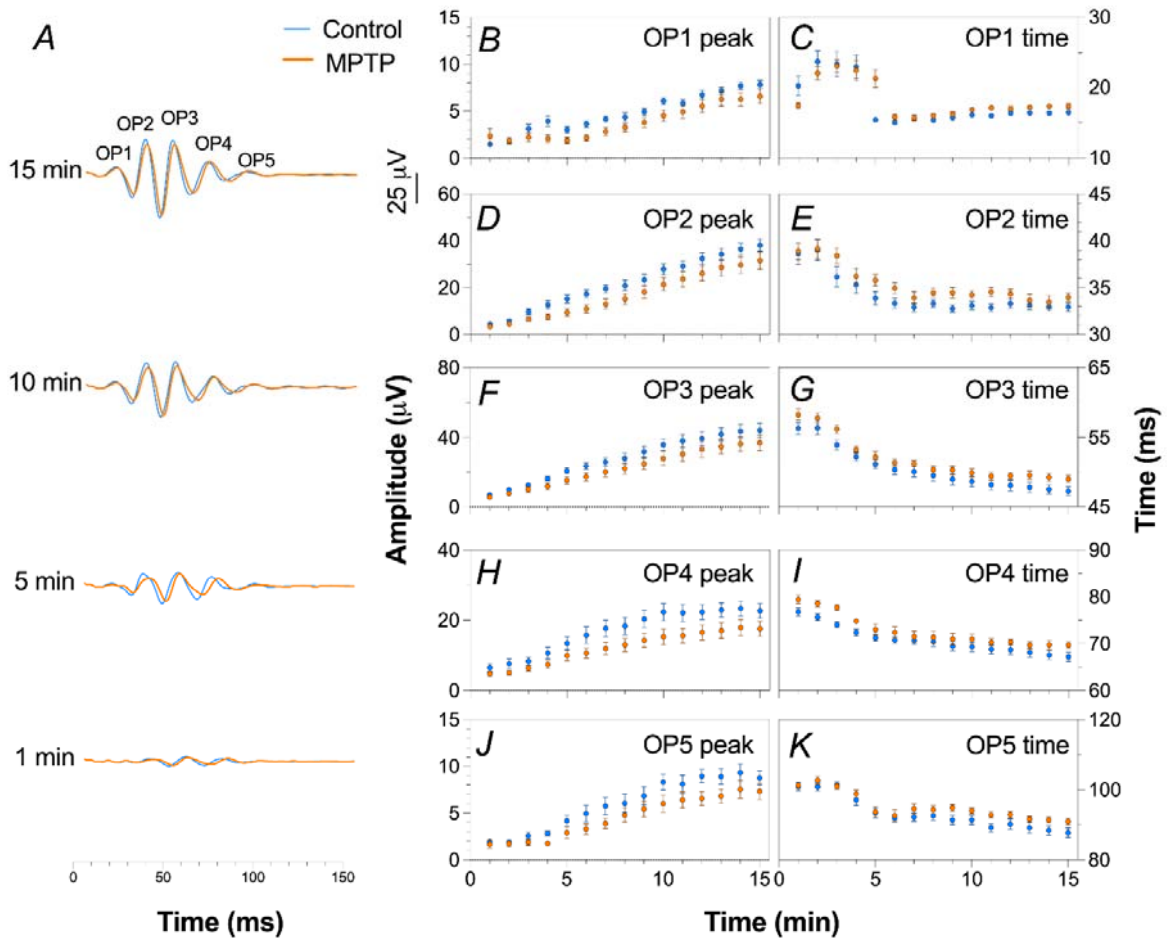
Supplementary figure 1: Day 21 photopic ERG waveform growth summary. (A) Representative ERG cone waveforms for control (n = 14, blue) and MPTP (n = 15, orange) cohorts, gradually growing to full saturation at 15 min. (B & C) a-wave and b-wave amplitude growth respectively over the 15 min light adaptation period. (D & E) a-wave and b-wave peak times respectively over the 15 min light adaptation period.



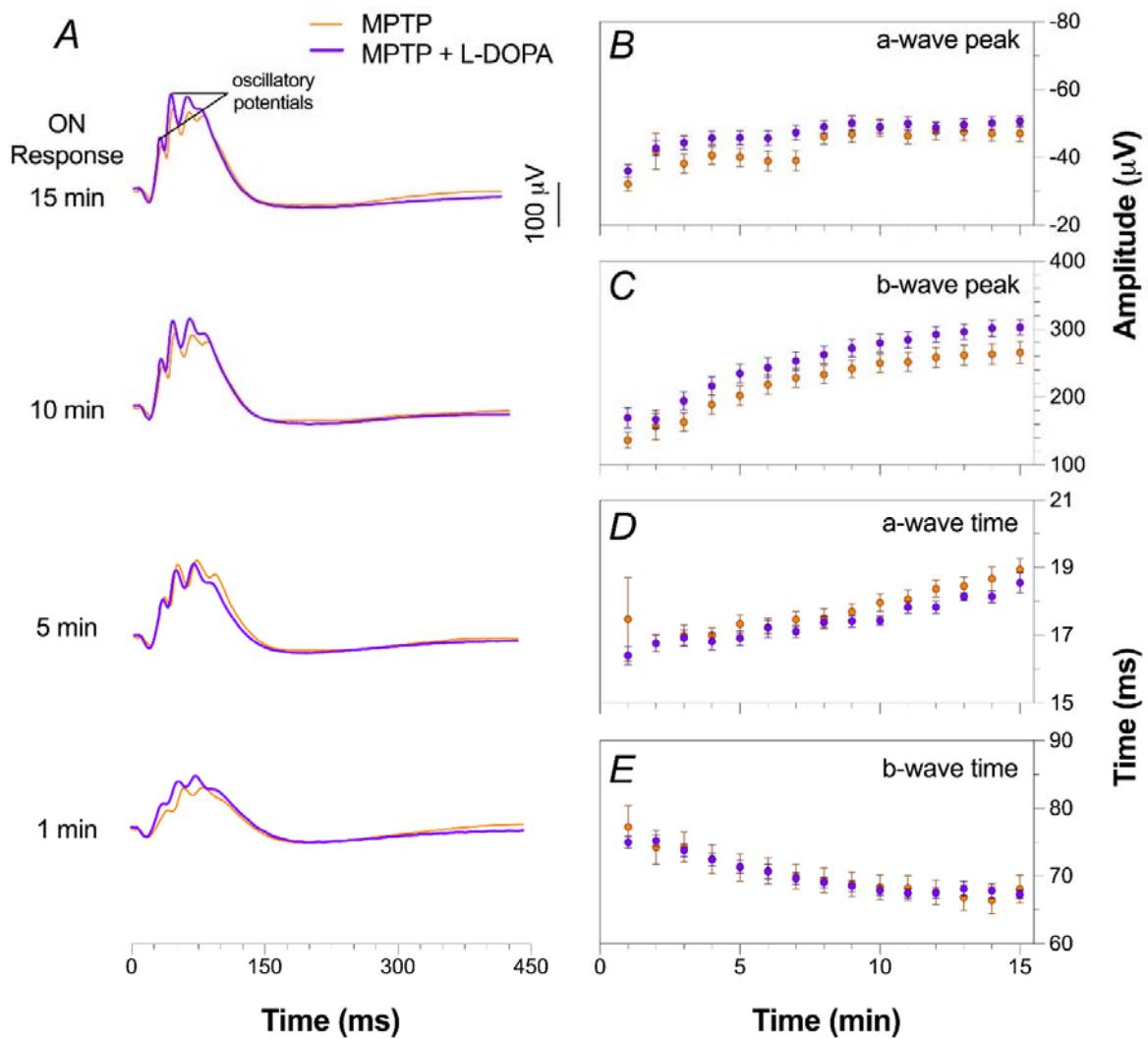
Supplementary figure 2: Day 21 photopic OP waveform growth summary. (A) Representative oscillatory potentials (OPs) for control ($n = 14$, blue) and MPTP ($n = 15$, orange) cohorts, growing to full saturation at 15 min. (B & C) OP1 peak and timing growth. (D & E) OP2 peak and timing growth. (F & G) OP3 peak and timing growth. (H & I) OP4 peak and timing growth. (J & K) OP5 peak and timing growth.



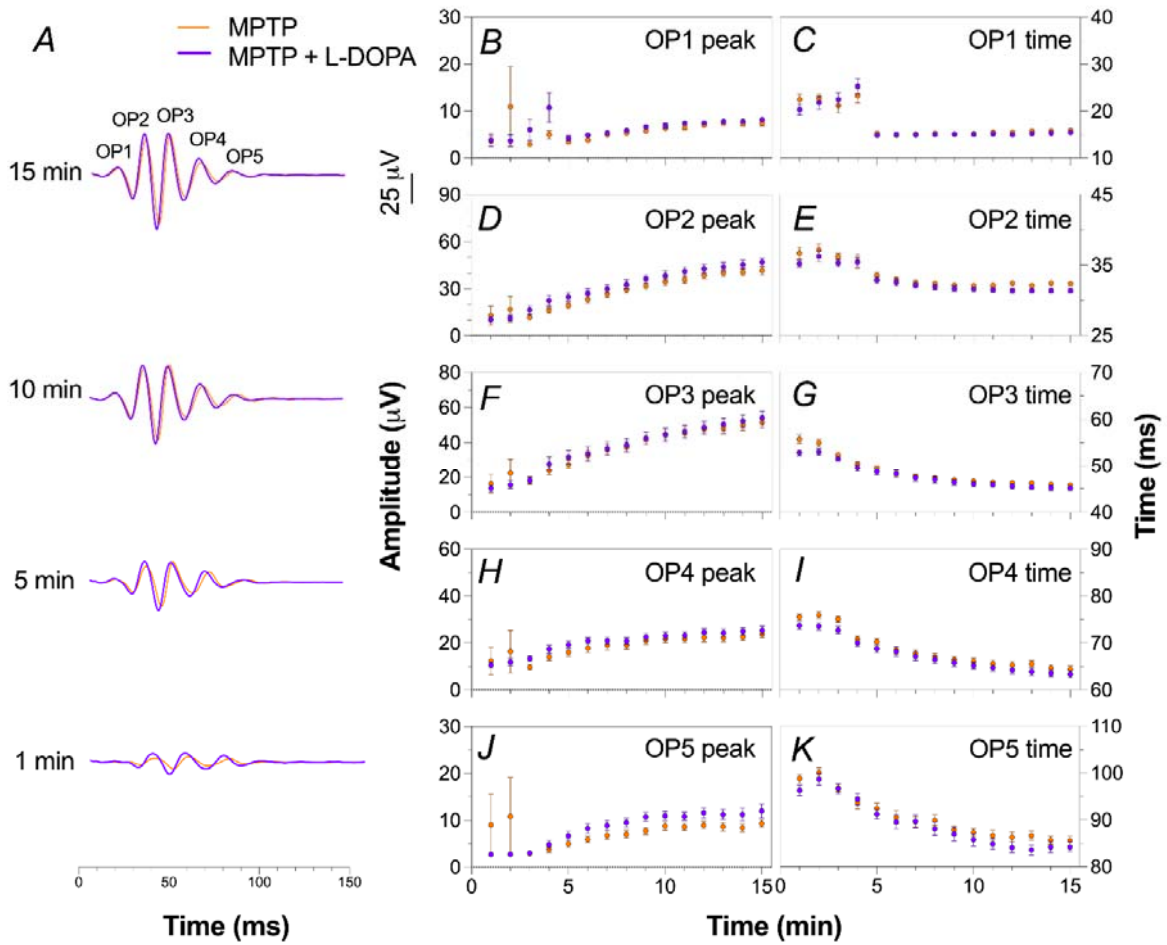
Supplementary figure 3: Day 45 photopic ERG waveform growth summary. (A) Representative ERG cone waveforms for control (n = 12, blue) and MPTP (n = 15, orange) cohorts, gradually growing to full saturation at 15 min. (B & C) a-wave and b-wave amplitude growth respectively over the 15 min light adaptation period. (D & E) a-wave and b-wave peak times respectively over the 15 min light adaptation period.



Supplementary figure 4: Day 45 photopic OP waveform growth summary. (A) Representative oscillatory potentials (OPs) for control ($n = 12$, blue) and MPTP ($n = 15$, orange) cohorts, growing to full saturation at 15 min. (B & C) OP1 peak and timing growth. (D & E) OP2 peak and timing growth. (F & G) OP3 peak and timing growth. (H & I) OP4 peak and timing growth. (J & K) OP5 peak and timing growth.



Supplementary figure 5: Day 45 L-DOPA photopic ERG waveform growth summary. (A) Representative ERG cone waveforms for MPTP positive control (n = 14, orange) and MPTP + L-DOPA (n = 12, purple) cohorts, gradually growing to full saturation at 15 min. (B & C) a-wave and b-wave amplitude growth respectively over the 15 min light adaptation period. (D & E) a-wave and b-wave peak times respectively over the 15 min light adaptation period.



Supplementary figure 6: Day 45 L-DOPA photopic OP waveform growth summary. (A) Representative oscillatory potentials (OPs) for MPTP positive control (n = 14, orange) and MPTP + L-DOPA (n = 12, purple) cohorts, growing to full saturation at 15 min. (B & C) OP1 peak and timing growth. (D & E) OP2 peak and timing growth. (F & G) OP3 peak and timing growth. (H & I) OP4 peak and timing growth. (J & K) OP5 peak and timing growth.