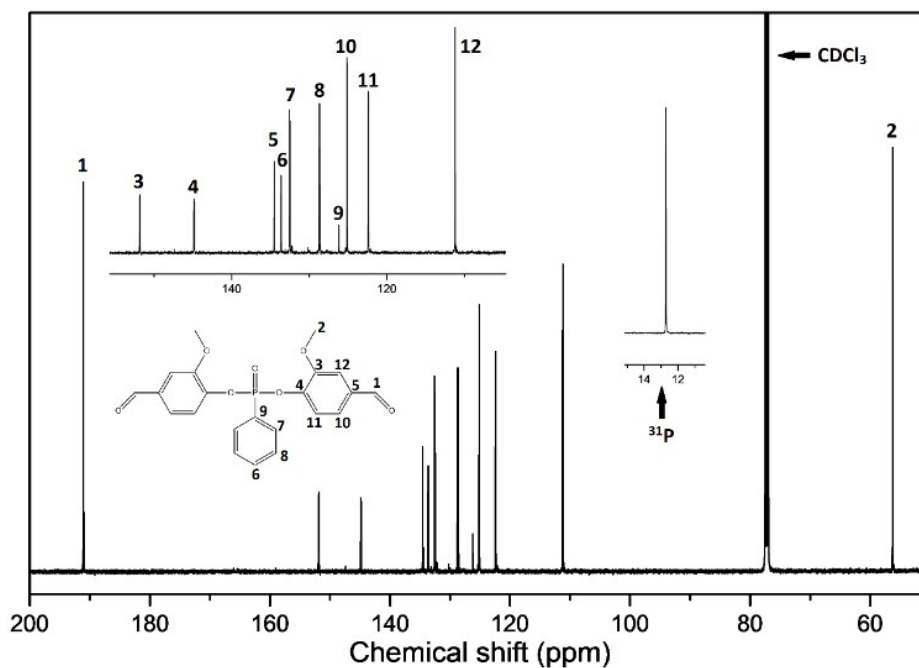


Supporting Information

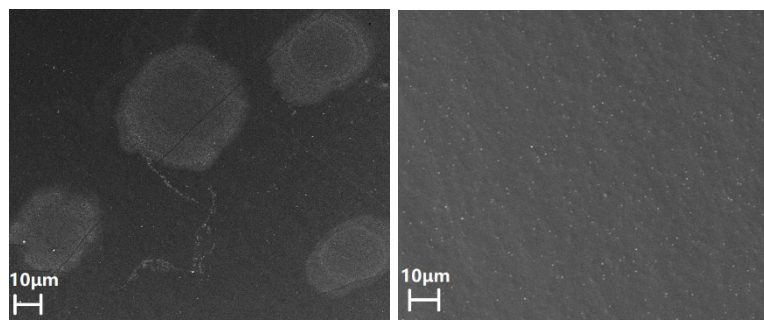


S 1: ^{13}C - and ^{31}P NMR spectra of VP

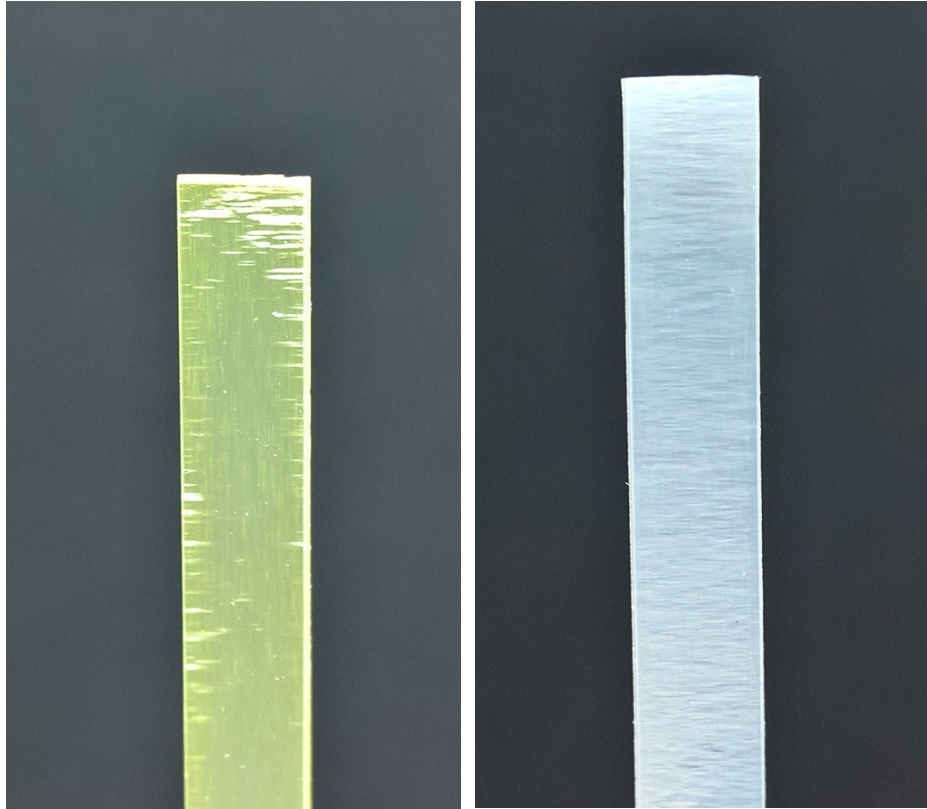
S 2: Data obtained from TGA plots of VA and VP

Sample	$T_{5\%}$ ($^{\circ}\text{C}$)	T_{max} ($^{\circ}\text{C}$)	Residue (wt-%)
VA	124	175	0
VP	286	343	24.5

$T_{x\%}$ was the temperature at x% weight loss of the samples. T_{max} was the temperature at the maximal rate of weight loss. Residue was the yield at 500 $^{\circ}\text{C}$.



S 3: SEM pictures of PLA/VA (left) and PLA/VP (right) composites



S 4: Pictures of tensile bar after tests of PLA/VA (left) and PLA/VP (right) composites