

Figure S1

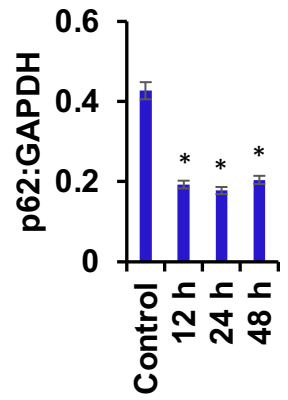
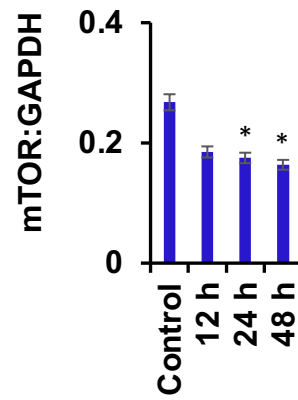
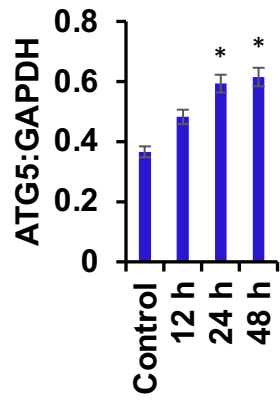
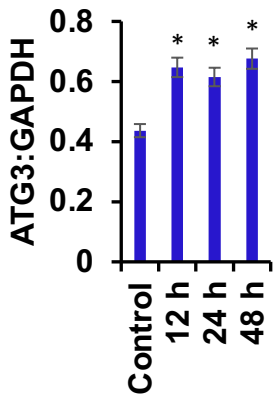
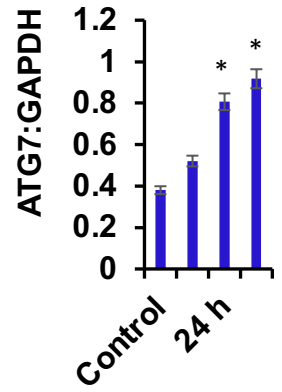
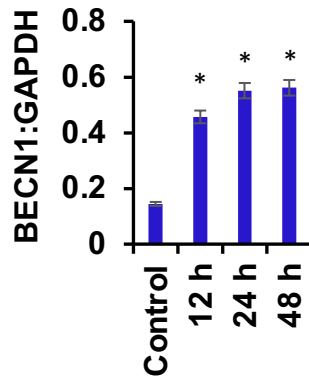
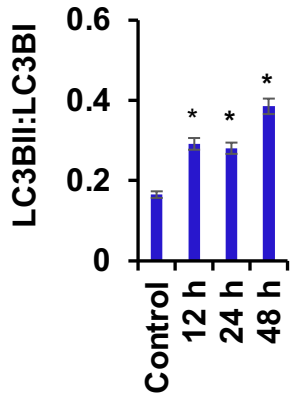
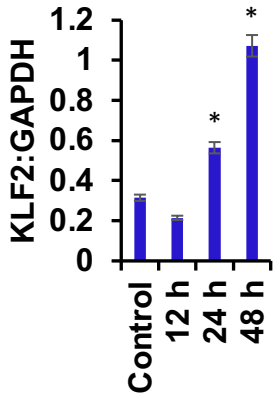


Figure S2

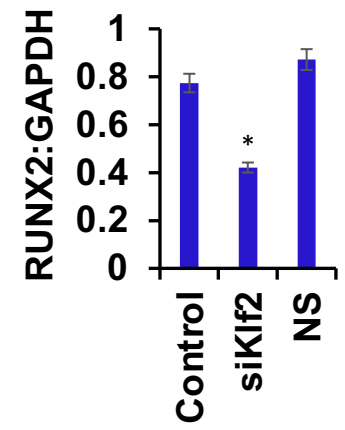
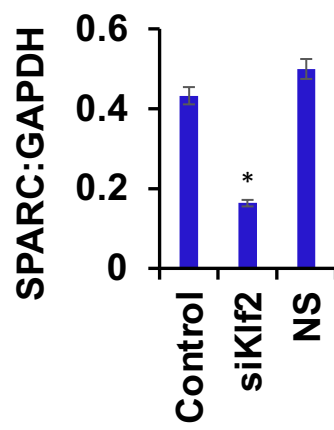
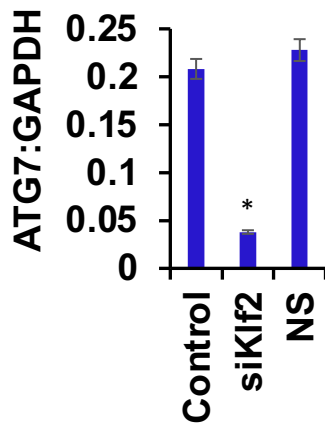
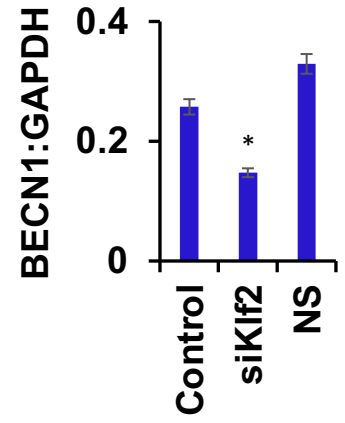
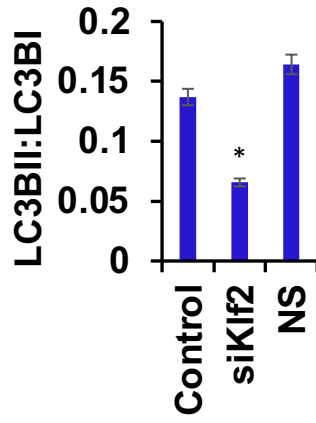
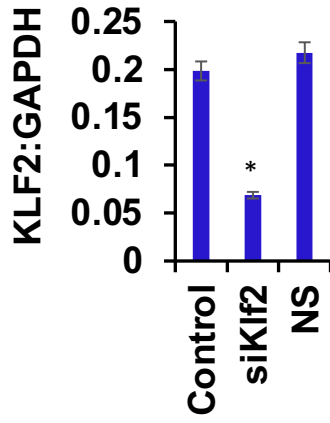


Figure S3

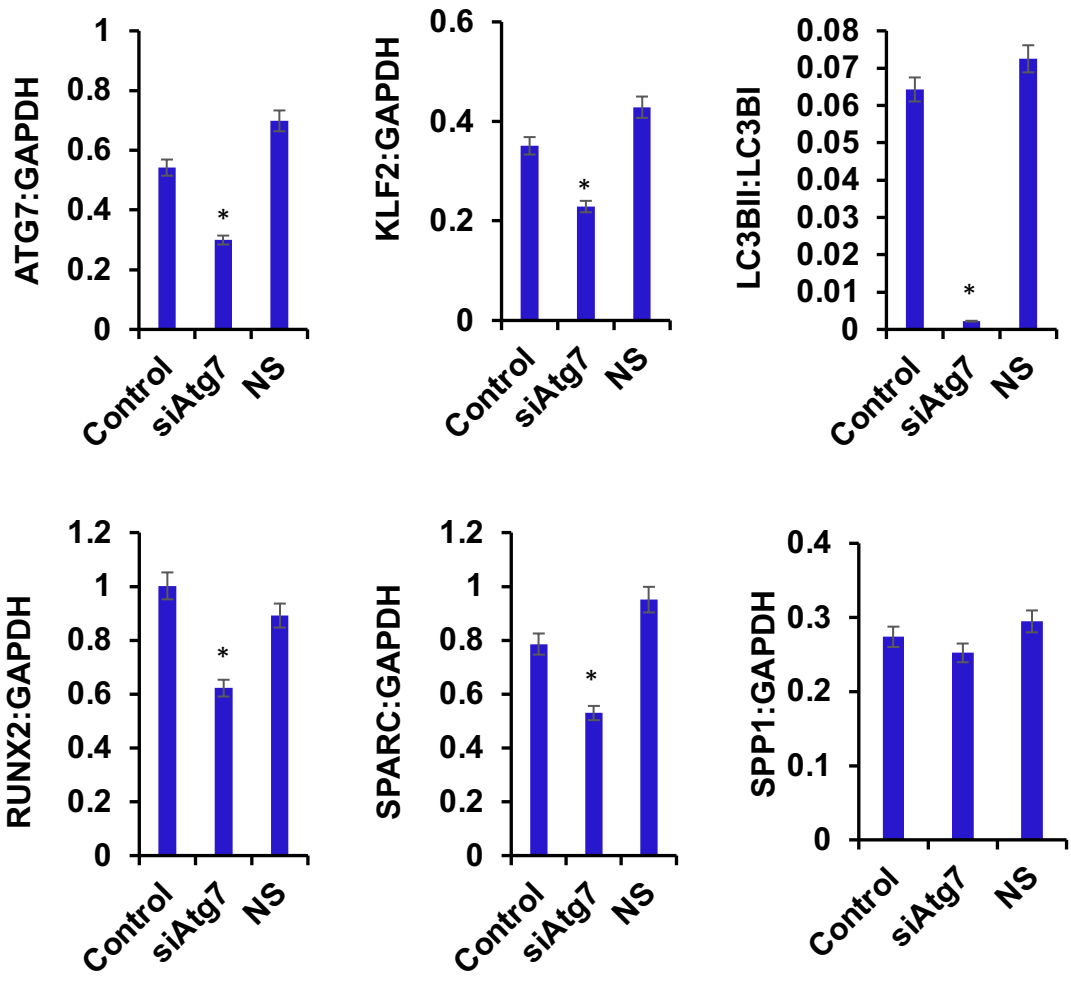


Figure S4

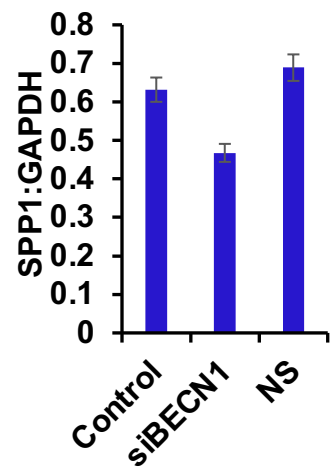
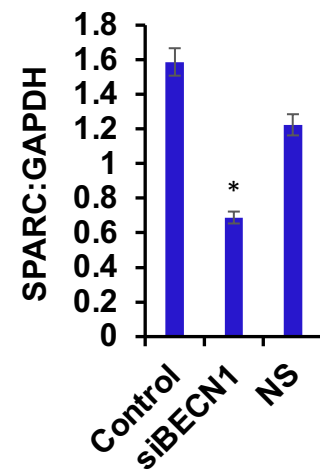
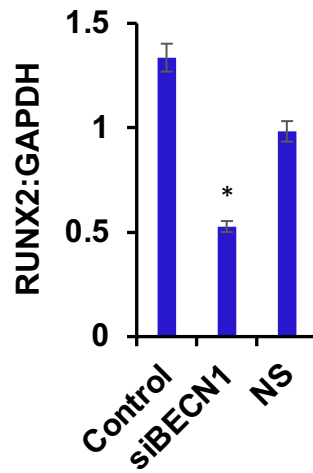
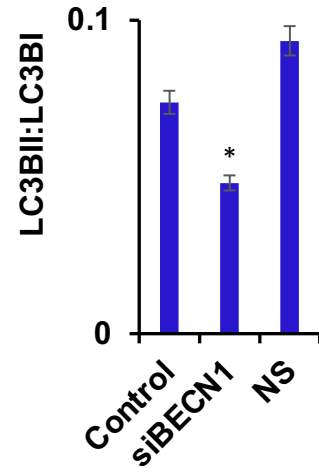
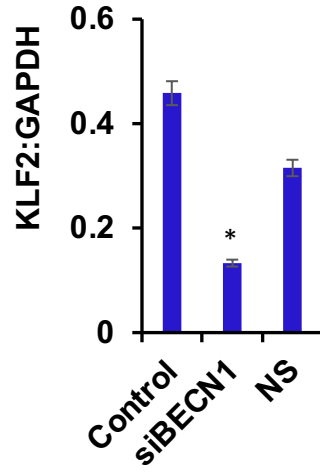
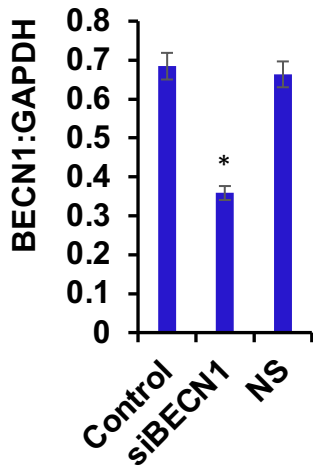


Figure S5

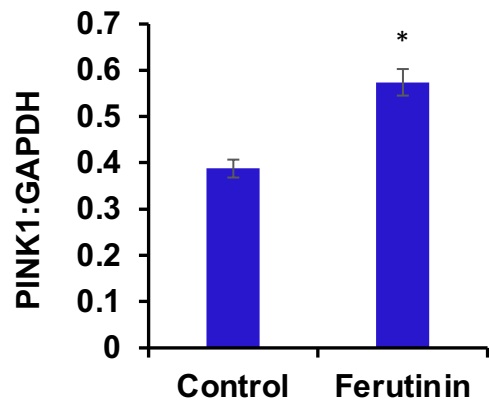
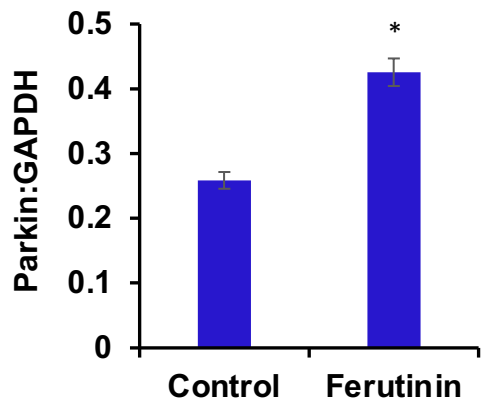


Figure S6

Highlighted regions were used for primer selection for Chromatin immunoprecipitation-PCR analysis

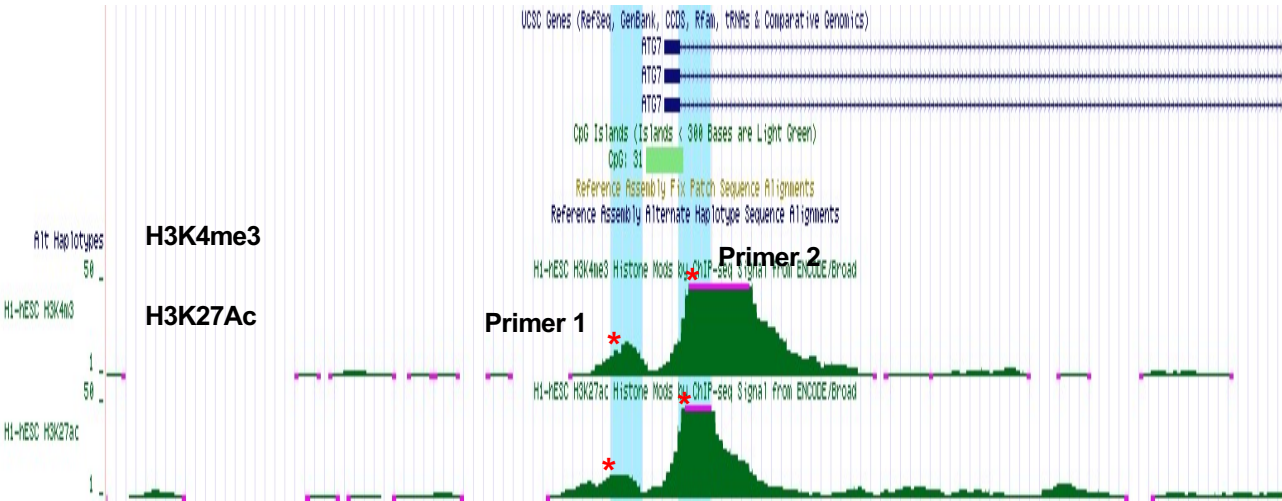


Figure S7

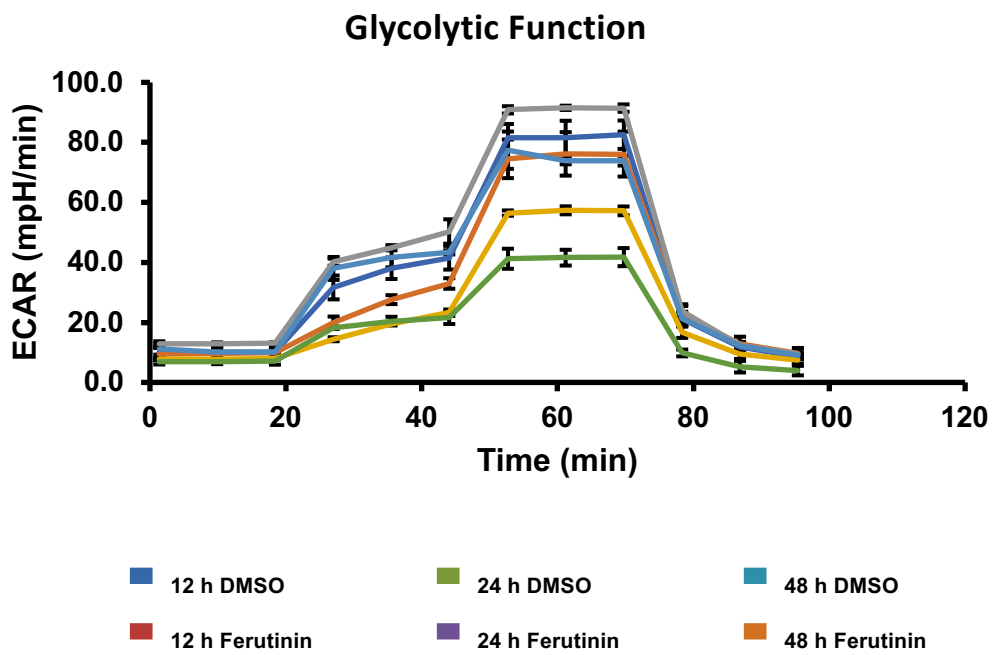


Figure S8



**Table S1.** Primer sequences used in chromatin immunoprecipitation quantitative PCR assays

<b>Primer</b>	<b>Name</b>	<b>Sequence</b>	<b>Genomic location from Human-GRCh37/hg19 assembly</b>
1	<b>ATG7-1 Forward</b>	TTGAGCGGCGGTAAGTGAG	Chr3:11,313,635-11,313,654
2	<b>ATG7-1 Reverse</b>	CCTGAGACTTGCTGTGACCC	Chr3:11,313,758-11,313,778
3	<b>ATG7-1 Forward</b>	TTCTCATCTCCTGGCTCTCC	Chr3:11,314,180-11,314,200
4	<b>ATG7-1 Reverse</b>	TCTCCCTTACCAGATGTCGGA	Chr3:11,314,363- 11,314,384

**Figure S9**