

**Table S1. Study schedule**

	Screening	Visit 1 (Week 2)	Visit 2 (Week 4, post-study visit)
Initial informed consent	X		
Interview of demographics	X		
Installation of the platform	X		
Interaction of the platform	X	X	X
Consent to protocol amendments	X	X	X
Self-measurement of body temperatures	X (daily at the scheduled time) <sup>1</sup>		
Administration of virtual study drugs	X (daily at the scheduled time) <sup>2</sup>		
Complete questionnaires		X	X

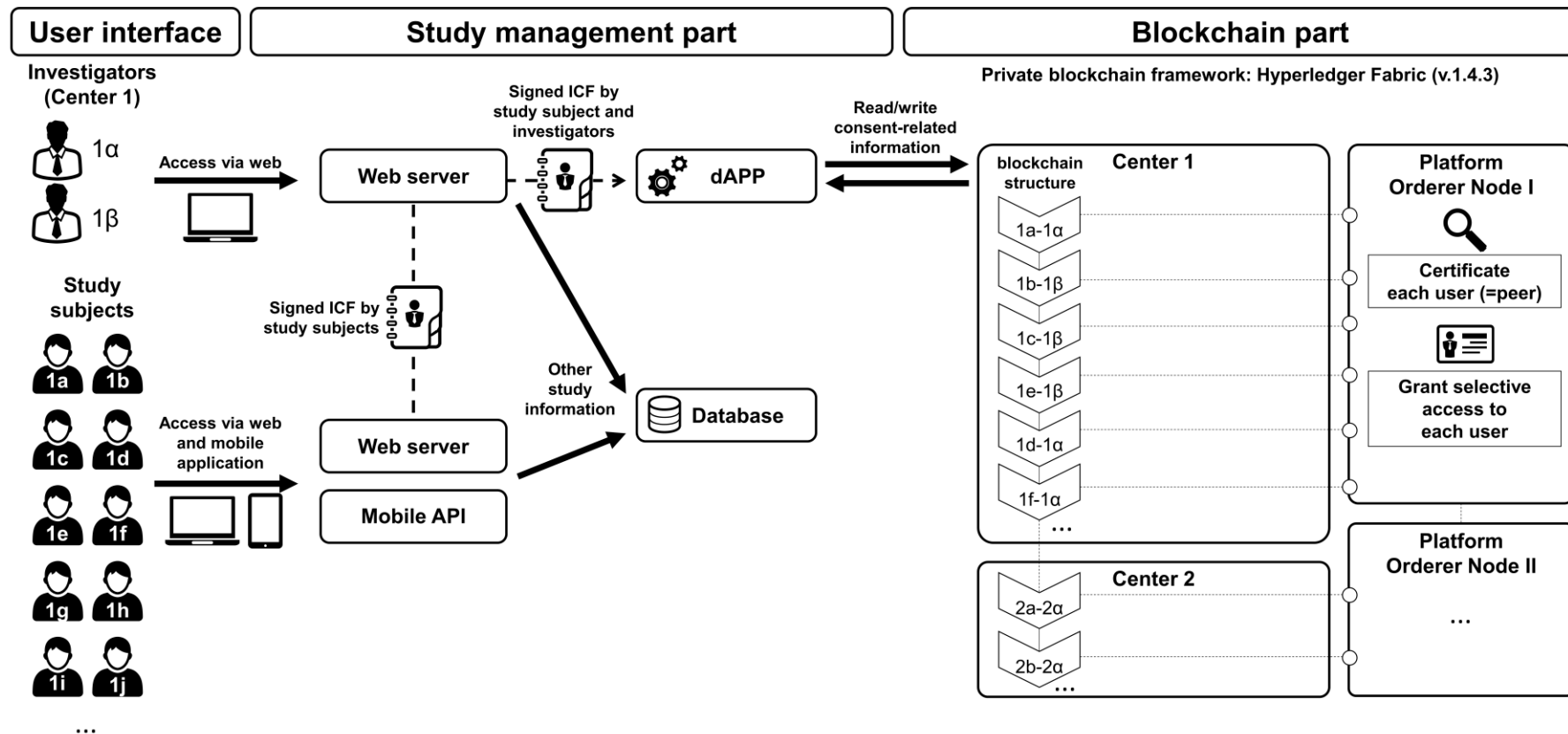
<sup>1</sup>Each subject measured the body temperature at home and reported the value via the platform. The scheduled time window for the conduct was changed according to the protocol amendment. (Refer to Table S2) The procedures were initiated the next day of the screening visit at lasted for 4 weeks.

<sup>2</sup>Each subject entered the unique code of the virtual study drug daily on the platform. Study drug administration was scheduled at 9.A.M. and was allowed for 2 hours before and after the scheduled time. The procedures were initiated the next day of the screening visit at lasted for 4 weeks.

**Table S2. Summary of changes in the scheduled protocol amendments**

<b>Protocol version</b>	<b>Description of changes</b>	<b>Scheduled amendment date</b>
1.0	The initial protocol: scheduled time of the body temperature measurement between 8 A.M. and 11 A.M.	
1.1	Minor amendment; changes in the telephone number of the study personnel	7 days after the study initiation
2.0	Major amendment; changes in the scheduled time of the body temperature measurement (from 8 A.M.–11 A.M. to midday–3 P.M.)	14 days after the study initiation
2.1	Minor amendment; changes in the terminology in the introduction part (from ‘consent system’ to ‘consent model’)	18 days after the study initiation
3.0	Major amendment; changes in the scheduled time of the body temperature measurement (from midday–3 P.M. to 6 P.M.–9 P.M.)	30 days after the study initiation
3.1	Minor amendment; correction of typos	35 days after the study initiation

Figure S1. Schematic representation of METORY platform. Signed ICF of each subject and investigator would be recorded on blockchain part. Platform orderer nodes performed certification and access management process for each user. Information recorded on blockchain part was connected as a chain structure, a key feature of blockchain architecture. (Abbreviations: API, application programming interface; dAPP, decentralized application; ICF, informed consent form.)



**Figure S2. Distribution of the response time according to each study center.**

