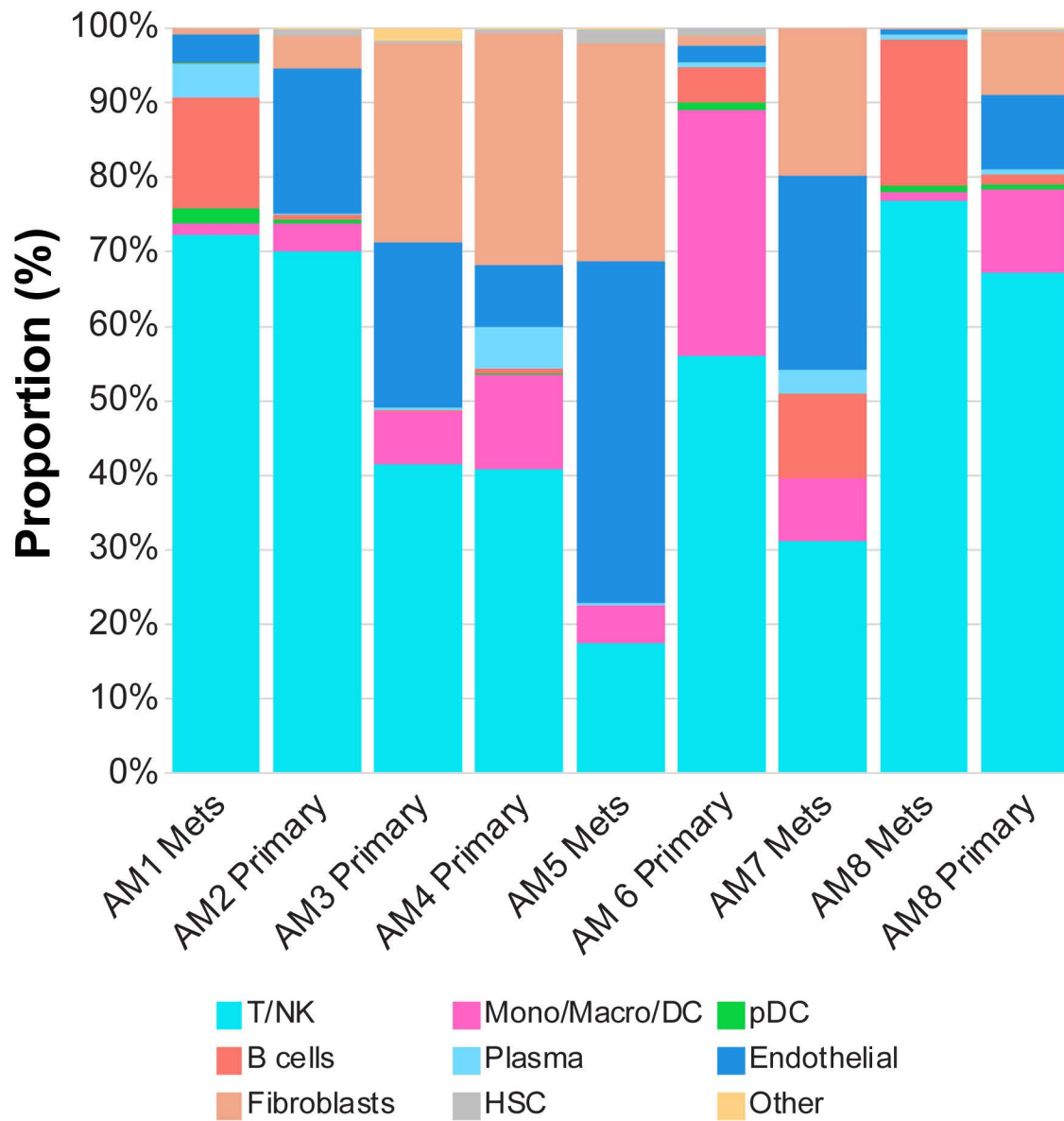
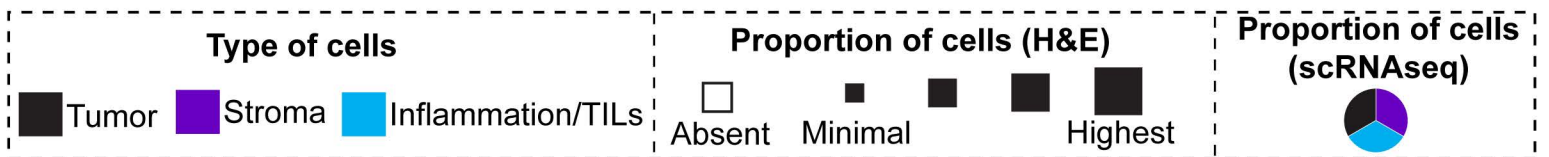
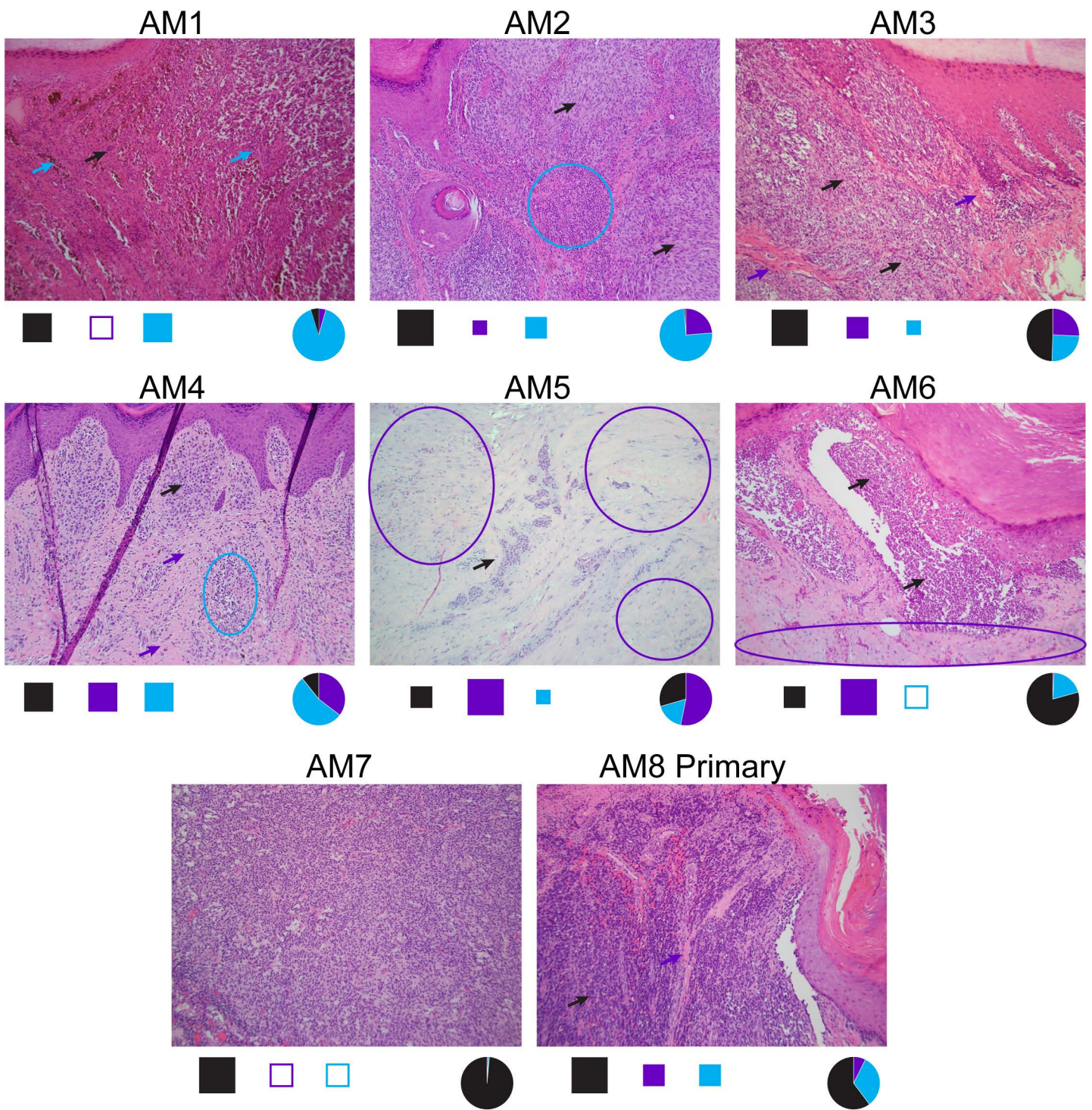


Supplemental Figure 1. InferCNV analysis shows genomic alterations in cells identified as tumor, confirming tumor cell identification.



Supplemental Figure 2. Proportion of non-tumor cells from major cell types identified from each sample.



Supplemental Figure 3. H&E staining of the acral melanoma tumors. Images are annotated for presence and relative quantity of tumor (black), inflammation (blue) and stromal cells (purple). For reference, the proportions of tumor, stroma and immune cells identified using scRNAseq are included as pie charts for each sample.