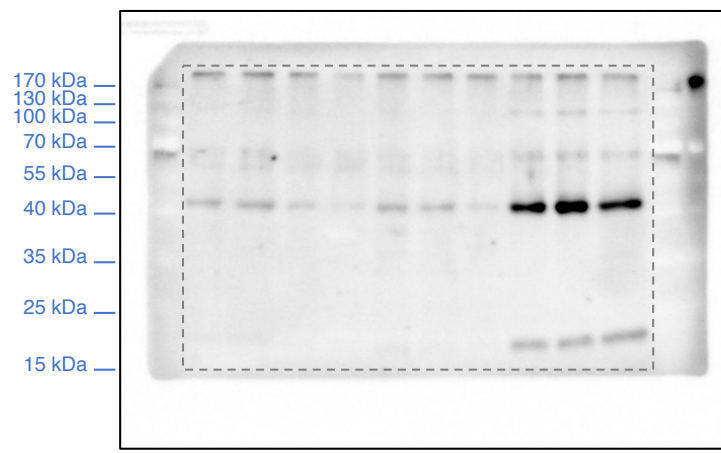
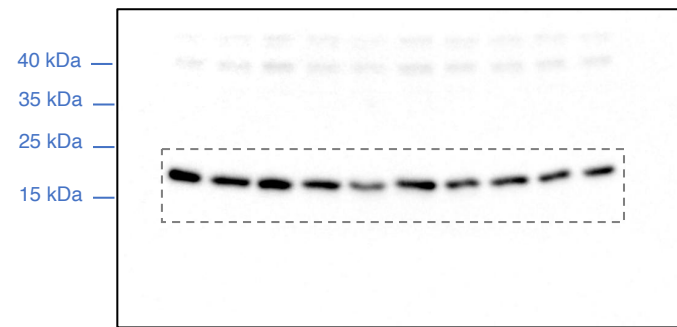


# Figure 3J

<i>E. coli</i>	-	-	-	-	-	-	-	-	-	L
<i>L. innocua</i>	-	L	HK	HK	HK	L	HK	HK	HK	-
<i>L. innocua</i> RNA <sub>tot</sub> (10μg/mL)	-	-	-	+	-	-	-	+	-	-
<i>E. coli</i> RNA <sub>tot</sub> (10μg/mL)	-	-	-	-	+	-	-	-	+	-
LPS (100ng/mL)	-	-	-	-	-	+	+	+	+	-



Crosslinked Fractions  
 ASC  
 Monomer ~22kDa  
 Dimer ~ 45kDa  
 Oligomers above 45kDa



WCE  
 ASC  
 ~22kDa