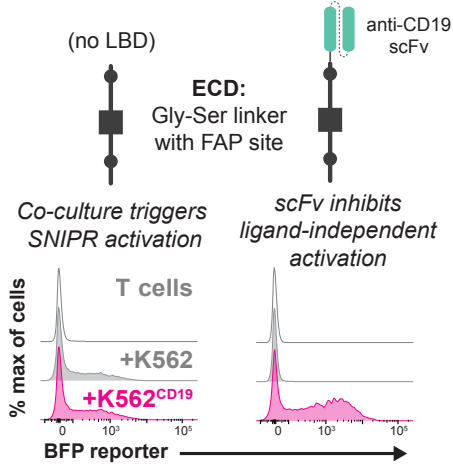


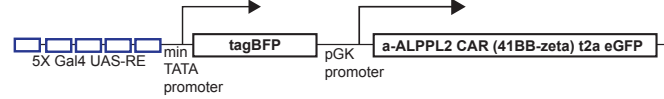
A

Protease sites can regulate SNIPR signaling

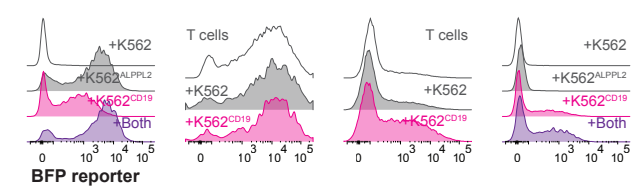


B

Reporter construct with constitutive CAR

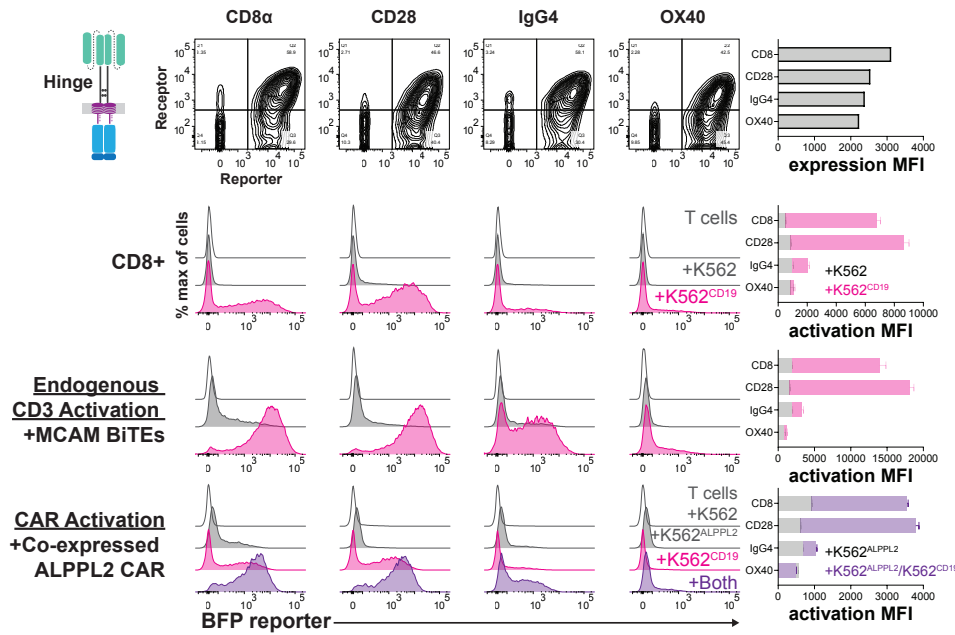


C Notch1 Δ NRR Notch2 Δ NRR Notch3 Δ NRR Notch4 Δ NRR



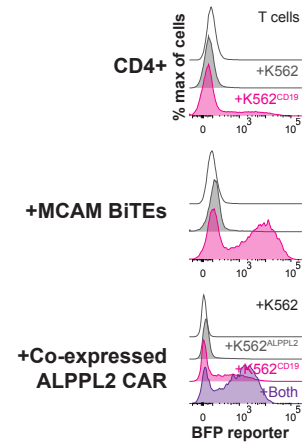
D

SNIPRs built with hinges derived from clinical CARs



E

Full-length CD8α hinge Notch receptor in CD4+



F

The CD8α hinge ECD can be optimized through truncation

