

Ghaznavi et al. Changes in Marriage, Divorce, and Births During the COVID-19 Pandemic in Japan.

Online Supplementary Material.

Table of Contents

Table/Figure	Title	Page
eTable 1	Observed and expected daily number of marriages , by month, with 95% prediction intervals between January 2017 and May 2021, Japan.	2-3
eTable 2	Observed and expected daily number of marriages , by month, with 95% prediction intervals between January 2017 and May 2021, Chubu.	4-5
eTable 3	Observed and expected daily number of marriages , by month, with 95% prediction intervals between January 2017 and May 2021, Chugoku.	6-7
eTable 4	Observed and expected daily number of marriages , by month, with 95% prediction intervals between January 2017 and May 2021, Hokkaido.	8-9
eTable 5	Observed and expected daily number of marriages , by month, with 95% prediction intervals between January 2017 and May 2021, Kansai.	10-11
eTable 6	Observed and expected daily number of marriages , by month, with 95% prediction intervals between January 2017 and May 2021, Kanto.	12-13
eTable 7	Observed and expected daily number of marriages , by month, with 95% prediction intervals between January 2017 and May 2021, Kyushu & Okinawa.	14-15
eTable 8	Observed and expected daily number of marriages , by month, with 95% prediction intervals between January 2017 and May 2021, Shikoku.	16-17
eTable 9	Observed and expected daily number of marriages , by month, with 95% prediction intervals between January 2017 and May 2021, Tohoku.	18-19
eTable 10	Observed and expected daily number of divorces , by month, with 95% prediction intervals between January 2017 and May 2021, Japan.	20-21
eTable 11	Observed and expected daily number of divorces , by month, with 95% prediction intervals between January 2017 and May 2021, Chubu.	22-23
eTable 12	Observed and expected daily number of divorces , by month, with 95% prediction intervals between January 2017 and May 2021, Chugoku.	24-25
eTable 13	Observed and expected daily number of divorces , by month, with 95% prediction intervals between January 2017 and May 2021, Hokkaido.	26-27
eTable 14	Observed and expected daily number of divorces , by month, with 95% prediction intervals between January 2017 and May 2021, Kansai.	28-29
eTable 15	Observed and expected daily number of divorces , by month, with 95% prediction intervals between January 2017 and May 2021, Kanto.	30-31
eTable 16	Observed and expected daily number of divorces , by month, with 95% prediction intervals between January 2017 and May 2021, Kyushu & Okinawa.	32-33
eTable 17	Observed and expected daily number of divorces , by month, with 95% prediction intervals between January 2017 and May 2021, Shikoku.	34-35
eTable 18	Observed and expected daily number of divorces , by month, with 95% prediction intervals between January 2017 and May 2021, Tohoku.	36-37
eTable 19	Observed and expected daily number of total births , by month, with 95% prediction intervals between January 2017 and May 2021, Japan.	38-39
eTable 20	Observed and expected daily number of total births , by month, with 95% prediction intervals between January 2017 and May 2021, Chubu.	40-41
eTable 21	Observed and expected daily number of total births , by month, with 95% prediction intervals between January 2017 and May 2021, Chugoku.	42-43
eTable 22	Observed and expected daily number of total births , by month, with 95% prediction intervals between January 2017 and May 2021, Hokkaido.	44-45
eTable 23	Observed and expected daily number of total births , by month, with 95% prediction intervals between January 2017 and May 2021, Kansai.	46-47
eTable 24	Observed and expected daily number of total births , by month, with 95% prediction intervals between January 2017 and May 2021, Kanto.	48-49
eTable 25	Observed and expected daily number of total births , by month, with 95% prediction intervals between January 2017 and May 2021, Kyushu & Okinawa.	50-51
eTable 26	Observed and expected daily number of total births , by month, with 95% prediction intervals between January 2017 and May 2021, Shikoku.	52-53
eTable 27	Observed and expected daily number of total births , by month, with 95% prediction intervals between January 2017 and May 2021, Tohoku.	54-55
eFigure 1	Observed and expected daily number of first births , by month, with 95% prediction intervals between January 2017 and May 2021, Japan.	56
eFigure 2	Observed and expected daily number of subsequent births , by month, with 95% prediction intervals between January 2017 and May 2021, Japan.	57

eTable 1. Observed and expected daily number of marriages, by month, with 95% prediction intervals between January 2017 and May 2021, Japan.

Month	Observed	Expected	95% PI Upper Limit	95% PI Lower Limit
Jan 2017	1465	1684	2480	1391
Feb 2017	1847	1813	2600	1525
Mar 2017	2159	1872	2594	1605
Apr 2017	1579	1821	2652	1520
May 2017	1673	1608	2336	1336
Jun 2017	1607	1695	2379	1439
Jul 2017	1933	1646	2455	1349
Aug 2017	1451	1566	2300	1290
Sep 2017	1482	1471	2115	1222
Oct 2017	1401	1696	2534	1390
Nov 2017	2087	1821	2624	1528
Dec 2017	1810	1754	2475	1484
Jan 2018	1437	1647	2458	1348
Feb 2018	1896	1798	2592	1509
Mar 2018	1891	1828	2519	1572
Apr 2018	1765	1769	2587	1471
May 2018	1531	1558	2278	1289
Jun 2018	1427	1674	2334	1427
Jul 2018	1673	1624	2427	1330
Aug 2018	1508	1552	2292	1275
Sep 2018	1693	1437	2054	1198
Oct 2018	1372	1654	2468	1357
Nov 2018	1950	1766	2551	1479
Dec 2018	1703	1716	2396	1461
Jan 2019	1364	1626	2385	1345
Feb 2019	1625	1743	2489	1470
Mar 2019	1731	1777	2404	1542
Apr 2019	1254	1737	2491	1461
May 2019	3004	1535	2203	1283
Jun 2019	1482	1628	2229	1401
Jul 2019	1414	1583	2305	1315
Aug 2019	1386	1539	2231	1280
Sep 2019	1581	1406	1979	1183
Oct 2019	1240	1587	2313	1318
Nov 2019	2535	1640	2344	1377

Month	Observed	Expected	95% PI Upper Limit	95% PI Lower Limit
Dec 2019	1622	1713	2611	1393
Jan 2020	1215	1612	2500	1294
Feb 2020	2557	1689	2653	1351
Mar 2020	1402	1691	2574	1376
Apr 2020	1264	1740	2667	1414
May 2020	1050	1564	2479	1239
Jun 2020	1480	1698	2621	1373
Jul 2020	1209	1551	2502	1215
Aug 2020	1384	1512	2491	1168
Sep 2020	1104	1448	2378	1117
Oct 2020	1314	1655	2751	1280
Nov 2020	2286	1693	2824	1309
Dec 2020	1441	1637	2720	1264
Jan 2021	1253	1574	2697	1191
Feb 2021	1600	1596	2731	1212
Mar 2021	2013	1595	2665	1227
Apr 2021	1118	1516	2642	1134
May 2021	1465	1415	2483	1048

eTable 2. Observed and expected daily number of marriages, by month, with 95% prediction intervals between January 2017 and May 2021, Chubu.

Month	Observed	Expected	95% PI Upper Limit	95% PI Lower Limit
Jan 2017	232	263	388	215
Feb 2017	297	289	421	241
Mar 2017	357	304	429	258
Apr 2017	254	297	431	248
May 2017	272	261	382	216
Jun 2017	259	271	389	227
Jul 2017	310	266	394	218
Aug 2017	244	254	376	208
Sep 2017	246	245	357	201
Oct 2017	234	280	415	230
Nov 2017	337	294	428	245
Dec 2017	283	278	401	231
Jan 2018	224	258	386	210
Feb 2018	304	289	421	240
Mar 2018	310	298	418	254
Apr 2018	292	289	421	241
May 2018	251	253	371	209
Jun 2018	239	269	382	226
Jul 2018	269	263	390	216
Aug 2018	251	252	374	206
Sep 2018	276	239	347	197
Oct 2018	225	272	402	223
Nov 2018	314	285	415	237
Dec 2018	269	272	387	228
Jan 2019	218	256	375	211
Feb 2019	258	281	404	236
Mar 2019	288	290	396	250
Apr 2019	203	285	404	241
May 2019	489	251	359	210
Jun 2019	239	263	363	225
Jul 2019	225	258	370	216
Aug 2019	233	251	363	209
Sep 2019	260	234	331	196
Oct 2019	203	261	374	218
Nov 2019	403	265	379	221

Month	Observed	Expected	95% PI Upper Limit	95% PI Lower Limit
Dec 2019	257	272	420	219
Jan 2020	189	255	393	204
Feb 2020	410	273	430	217
Mar 2020	229	276	423	223
Apr 2020	213	286	433	233
May 2020	176	256	403	203
Jun 2020	248	274	426	221
Jul 2020	192	253	401	200
Aug 2020	233	247	404	191
Sep 2020	179	240	394	185
Oct 2020	215	270	443	210
Nov 2020	364	272	452	210
Dec 2020	226	260	433	199
Jan 2021	195	249	425	189
Feb 2021	255	257	438	195
Mar 2021	333	260	433	200
Apr 2021	181	249	428	187
May 2021	240	232	403	173

eTable 3. Observed and expected daily number of marriages, by month, with 95% prediction intervals between January 2017 and May 2021, Chugoku.

Month	Observed	Expected	95% PI Upper Limit	95% PI Lower Limit
Jan 2017	77	89	132	73
Feb 2017	99	99	145	82
Mar 2017	120	105	146	90
Apr 2017	87	102	148	85
May 2017	91	88	130	72
Jun 2017	85	89	127	75
Jul 2017	98	86	129	70
Aug 2017	77	83	125	67
Sep 2017	83	79	115	65
Oct 2017	77	92	137	74
Nov 2017	106	97	143	79
Dec 2017	98	92	131	77
Jan 2018	75	86	129	69
Feb 2018	104	96	143	79
Mar 2018	103	101	140	86
Apr 2018	98	97	142	80
May 2018	78	84	125	68
Jun 2018	74	88	123	73
Jul 2018	84	85	127	68
Aug 2018	80	82	123	66
Sep 2018	92	77	111	63
Oct 2018	76	88	132	72
Nov 2018	101	93	138	76
Dec 2018	90	89	126	75
Jan 2019	76	85	126	69
Feb 2019	88	93	135	76
Mar 2019	98	97	131	83
Apr 2019	70	94	136	78
May 2019	167	82	119	67
Jun 2019	75	84	117	71
Jul 2019	72	81	119	66
Aug 2019	72	80	118	65
Sep 2019	87	75	106	62
Oct 2019	69	84	123	69
Nov 2019	132	86	125	71

Month	Observed	Expected	95% PI Upper Limit	95% PI Lower Limit
Dec 2019	86	90	141	71
Jan 2020	61	85	133	67
Feb 2020	137	91	147	72
Mar 2020	79	93	144	74
Apr 2020	73	95	146	77
May 2020	60	84	135	65
Jun 2020	84	89	140	70
Jul 2020	66	80	130	62
Aug 2020	76	79	133	60
Sep 2020	61	78	129	59
Oct 2020	71	88	146	68
Nov 2020	122	89	150	68
Dec 2020	75	86	144	65
Jan 2021	70	84	143	63
Feb 2021	91	88	150	66
Mar 2021	118	89	148	68
Apr 2021	62	85	146	64
May 2021	79	78	136	58

eTable 4. Observed and expected daily number of marriages, by month, with 95% prediction intervals between January 2017 and May 2021, Hokkaido.

Month	Observed	Expected	95% PI Upper Limit	95% PI Lower Limit
Jan 2017	59	66	94	54
Feb 2017	70	72	102	60
Mar 2017	89	75	103	64
Apr 2017	63	72	102	61
May 2017	63	66	94	55
Jun 2017	72	69	95	58
Jul 2017	73	70	99	58
Aug 2017	62	65	94	54
Sep 2017	58	61	85	50
Oct 2017	55	66	95	55
Nov 2017	76	70	100	58
Dec 2017	68	67	94	56
Jan 2018	56	64	92	52
Feb 2018	75	71	101	59
Mar 2018	76	72	99	62
Apr 2018	67	70	99	58
May 2018	58	64	91	53
Jun 2018	59	67	92	57
Jul 2018	63	68	96	57
Aug 2018	61	63	92	52
Sep 2018	68	59	83	49
Oct 2018	54	64	92	53
Nov 2018	75	66	95	55
Dec 2018	66	64	89	54
Jan 2019	52	61	88	51
Feb 2019	62	67	95	56
Mar 2019	71	68	93	59
Apr 2019	51	67	93	56
May 2019	112	60	86	50
Jun 2019	67	63	87	54
Jul 2019	56	64	90	54
Aug 2019	58	61	87	51
Sep 2019	63	56	79	47
Oct 2019	47	61	86	51
Nov 2019	95	62	88	51

Month	Observed	Expected	95% PI Upper Limit	95% PI Lower Limit
Dec 2019	61	64	97	52
Jan 2020	49	61	92	49
Feb 2020	93	65	100	52
Mar 2020	58	66	99	54
Apr 2020	52	67	100	55
May 2020	43	62	95	49
Jun 2020	68	66	100	54
Jul 2020	47	63	98	50
Aug 2020	57	60	96	47
Sep 2020	47	58	91	45
Oct 2020	52	63	101	49
Nov 2020	84	64	103	49
Dec 2020	55	62	99	48
Jan 2021	48	60	99	46
Feb 2021	58	62	103	48
Mar 2021	80	63	101	49
Apr 2021	43	60	99	45
May 2021	54	57	95	44

eTable 5. Observed and expected daily number of marriages, by month, with 95% prediction intervals between January 2017 and May 2021, Kansai.

Month	Observed	Expected	95% PI Upper Limit	95% PI Lower Limit
Jan 2017	260	293	434	241
Feb 2017	331	321	465	269
Mar 2017	388	333	464	284
Apr 2017	290	325	474	270
May 2017	298	283	414	234
Jun 2017	281	294	417	248
Jul 2017	329	280	422	227
Aug 2017	245	268	399	218
Sep 2017	264	256	371	211
Oct 2017	251	302	454	247
Nov 2017	378	322	468	268
Dec 2017	318	309	439	261
Jan 2018	254	289	434	235
Feb 2018	335	320	466	267
Mar 2018	344	326	452	280
Apr 2018	317	317	466	263
May 2018	276	277	408	227
Jun 2018	249	293	412	247
Jul 2018	299	278	422	226
Aug 2018	257	268	400	217
Sep 2018	297	252	363	208
Oct 2018	242	297	446	243
Nov 2018	350	315	459	262
Dec 2018	300	306	429	259
Jan 2019	239	288	425	237
Feb 2019	289	314	451	263
Mar 2019	312	321	435	278
Apr 2019	218	315	453	264
May 2019	547	275	398	229
Jun 2019	259	288	395	247
Jul 2019	246	275	404	226
Aug 2019	237	268	394	221
Sep 2019	284	248	351	207
Oct 2019	222	286	418	237
Nov 2019	470	293	424	244

Month	Observed	Expected	95% PI Upper Limit	95% PI Lower Limit
Dec 2019	287	306	474	247
Jan 2020	210	286	448	228
Feb 2020	459	303	483	241
Mar 2020	252	304	470	246
Apr 2020	230	315	486	255
May 2020	190	281	451	221
Jun 2020	267	302	475	241
Jul 2020	218	270	444	209
Aug 2020	241	264	446	201
Sep 2020	199	256	430	194
Oct 2020	240	299	504	230
Nov 2020	424	305	517	233
Dec 2020	257	294	497	225
Jan 2021	227	281	489	211
Feb 2021	284	288	500	217
Mar 2021	373	290	491	221
Apr 2021	203	277	488	206
May 2021	264	257	457	189

eTable 6. Observed and expected daily number of marriages, by month, with 95% prediction intervals between January 2017 and May 2021, Kanto.

Month	Observed	Expected	95% PI Upper Limit	95% PI Lower Limit
Jan 2017	537	627	930	516
Feb 2017	681	657	943	553
Mar 2017	760	666	929	569
Apr 2017	560	649	958	536
May 2017	618	580	848	480
Jun 2017	585	629	884	534
Jul 2017	731	612	921	499
Aug 2017	531	578	850	476
Sep 2017	535	534	773	442
Oct 2017	509	616	933	501
Nov 2017	788	672	966	564
Dec 2017	669	653	923	553
Jan 2018	537	616	927	503
Feb 2018	699	658	946	554
Mar 2018	681	657	909	564
Apr 2018	627	635	939	524
May 2018	574	567	831	467
Jun 2018	529	625	871	533
Jul 2018	625	606	913	494
Aug 2018	562	576	852	474
Sep 2018	615	525	752	437
Oct 2018	502	607	915	496
Nov 2018	734	655	943	549
Dec 2018	631	643	896	548
Jan 2019	510	610	899	504
Feb 2019	608	641	914	541
Mar 2019	616	643	876	556
Apr 2019	463	629	911	526
May 2019	1089	562	809	469
Jun 2019	552	611	836	526
Jul 2019	541	593	872	491
Aug 2019	519	574	832	478
Sep 2019	572	518	730	435
Oct 2019	462	588	864	485
Nov 2019	954	613	874	516

Month	Observed	Expected	95% PI Upper Limit	95% PI Lower Limit
Dec 2019	605	644	969	528
Jan 2020	469	607	942	487
Feb 2020	963	624	973	501
Mar 2020	505	617	932	504
Apr 2020	428	634	978	512
May 2020	372	576	911	457
Jun 2020	512	638	975	520
Jul 2020	446	584	947	457
Aug 2020	504	567	929	440
Sep 2020	404	538	880	416
Oct 2020	482	619	1033	478
Nov 2020	852	636	1061	493
Dec 2020	542	618	1027	478
Jan 2021	458	591	1020	446
Feb 2021	593	589	1013	446
Mar 2021	692	578	977	441
Apr 2021	403	547	968	403
May 2021	546	512	912	375

eTable 7. Observed and expected daily number of marriages, by month, with 95% prediction intervals between January 2017 and May 2021, Kyushu & Okinawa.

Month	Observed	Expected	95% PI Upper Limit	95% PI Lower Limit
Jan 2017	177	200	296	164
Feb 2017	212	218	315	183
Mar 2017	260	226	313	193
Apr 2017	186	217	319	180
May 2017	190	186	274	153
Jun 2017	177	194	273	163
Jul 2017	227	190	286	154
Aug 2017	171	183	272	150
Sep 2017	167	171	246	142
Oct 2017	158	196	295	159
Nov 2017	235	212	308	177
Dec 2017	219	206	290	174
Jan 2018	170	194	291	158
Feb 2018	217	213	309	178
Mar 2018	220	217	301	186
Apr 2018	209	209	309	172
May 2018	172	178	264	145
Jun 2018	155	190	267	160
Jul 2018	195	186	282	150
Aug 2018	175	180	269	147
Sep 2018	200	166	238	137
Oct 2018	158	189	286	153
Nov 2018	220	205	299	170
Dec 2018	201	200	281	170
Jan 2019	159	190	283	156
Feb 2019	190	205	296	171
Mar 2019	206	209	286	180
Apr 2019	145	203	296	169
May 2019	350	174	255	144
Jun 2019	164	183	255	156
Jul 2019	162	180	266	147
Aug 2019	158	178	260	146
Sep 2019	181	161	229	134
Oct 2019	138	180	266	148
Nov 2019	283	188	272	156

Month	Observed	Expected	95% PI Upper Limit	95% PI Lower Limit
Dec 2019	191	198	306	159
Jan 2020	142	188	294	149
Feb 2020	294	197	314	156
Mar 2020	167	197	305	159
Apr 2020	151	202	313	163
May 2020	122	177	286	138
Jun 2020	166	191	299	152
Jul 2020	142	175	286	136
Aug 2020	163	174	290	133
Sep 2020	124	165	273	125
Oct 2020	145	186	311	142
Nov 2020	256	193	325	148
Dec 2020	168	188	313	144
Jan 2021	152	182	313	137
Feb 2021	186	185	318	140
Mar 2021	249	186	310	143
Apr 2021	133	176	306	131
May 2021	164	160	283	117

eTable 8. Observed and expected daily number of marriages, by month, with 95% prediction intervals between January 2017 and May 2021, Shikoku.

Month	Observed	Expected	95% PI Upper Limit	95% PI Lower Limit
Jan 2017	39	47	69	38
Feb 2017	51	51	73	42
Mar 2017	57	52	73	43
Apr 2017	43	50	73	41
May 2017	43	43	63	35
Jun 2017	44	44	62	35
Jul 2017	49	42	63	34
Aug 2017	37	40	59	32
Sep 2017	39	37	55	29
Oct 2017	35	43	64	34
Nov 2017	51	47	68	38
Dec 2017	46	46	65	37
Jan 2018	37	45	67	36
Feb 2018	55	49	70	40
Mar 2018	50	50	70	41
Apr 2018	48	47	69	38
May 2018	39	41	61	33
Jun 2018	35	43	61	34
Jul 2018	41	41	62	33
Aug 2018	39	39	58	31
Sep 2018	45	36	53	28
Oct 2018	34	41	63	33
Nov 2018	47	45	66	37
Dec 2018	45	44	62	35
Jan 2019	35	43	64	35
Feb 2019	41	46	67	38
Mar 2019	47	48	67	39
Apr 2019	31	46	66	38
May 2019	79	40	58	32
Jun 2019	37	41	59	32
Jul 2019	33	40	58	32
Aug 2019	34	38	56	31
Sep 2019	41	35	51	27
Oct 2019	29	39	57	31
Nov 2019	63	40	59	33

Month	Observed	Expected	95% PI Upper Limit	95% PI Lower Limit
Dec 2019	40	43	66	34
Jan 2020	29	42	65	32
Feb 2020	68	44	70	34
Mar 2020	35	44	68	35
Apr 2020	35	44	69	35
May 2020	28	39	64	30
Jun 2020	43	42	66	33
Jul 2020	31	38	63	28
Aug 2020	36	37	62	27
Sep 2020	28	35	59	26
Oct 2020	33	40	68	29
Nov 2020	59	41	70	30
Dec 2020	36	40	68	30
Jan 2021	34	40	70	29
Feb 2021	43	41	72	30
Mar 2021	58	42	70	32
Apr 2021	29	39	69	29
May 2021	38	37	65	27

eTable 9. Observed and expected daily number of marriages, by month, with 95% prediction intervals between January 2017 and May 2021, Tohoku.

Month	Observed	Expected	95% PI Upper Limit	95% PI Lower Limit
Jan 2017	85	100	144	83
Feb 2017	106	105	149	88
Mar 2017	128	110	151	94
Apr 2017	96	109	156	91
May 2017	98	100	144	83
Jun 2017	103	105	145	90
Jul 2017	116	101	148	83
Aug 2017	84	95	138	78
Sep 2017	91	88	125	73
Oct 2017	82	101	148	83
Nov 2017	116	109	156	91
Dec 2017	109	103	144	87
Jan 2018	83	96	141	78
Feb 2018	108	102	148	85
Mar 2018	106	106	144	91
Apr 2018	107	104	149	86
May 2018	84	95	138	78
Jun 2018	87	101	138	87
Jul 2018	96	97	142	80
Aug 2018	84	92	134	75
Sep 2018	100	84	118	70
Oct 2018	82	96	140	78
Nov 2018	110	103	148	85
Dec 2018	101	99	136	84
Jan 2019	75	92	134	76
Feb 2019	91	97	139	80
Mar 2019	93	100	134	86
Apr 2019	75	99	140	82
May 2019	170	90	130	75
Jun 2019	89	96	130	82
Jul 2019	80	92	132	76
Aug 2019	74	88	128	72
Sep 2019	92	80	112	67
Oct 2019	70	89	129	74
Nov 2019	137	93	133	77

Month	Observed	Expected	95% PI Upper Limit	95% PI Lower Limit
Dec 2019	95	96	144	78
Jan 2020	67	89	138	71
Feb 2020	133	92	144	72
Mar 2020	77	93	140	75
Apr 2020	81	96	147	77
May 2020	60	89	140	70
Jun 2020	93	96	146	77
Jul 2020	67	87	139	68
Aug 2020	75	84	137	64
Sep 2020	63	79	128	61
Oct 2020	74	90	148	69
Nov 2020	124	93	153	72
Dec 2020	81	90	145	69
Jan 2021	69	86	144	65
Feb 2021	90	85	144	64
Mar 2021	111	87	142	67
Apr 2021	64	84	142	62
May 2021	81	81	138	60

eTable 10. Observed and expected daily number of divorces, by month, with 95% prediction intervals between January 2017 and May 2021, Japan.

Month	Observed	Expected	95% PI Upper Limit	95% PI Lower Limit
Jan 2017	545	586	739	525
Feb 2017	602	640	816	572
Mar 2017	795	665	805	609
Apr 2017	596	649	809	586
May 2017	583	597	753	535
Jun 2017	601	580	701	531
Jul 2017	552	578	719	521
Aug 2017	565	568	726	505
Sep 2017	568	568	691	518
Oct 2017	560	575	725	514
Nov 2017	554	578	749	510
Dec 2017	593	558	691	504
Jan 2018	534	576	731	514
Feb 2018	587	632	811	562
Mar 2018	745	655	800	598
Apr 2018	587	638	801	574
May 2018	578	583	744	519
Jun 2018	563	568	697	516
Jul 2018	559	566	714	506
Aug 2018	563	554	715	490
Sep 2018	515	554	685	501
Oct 2018	596	558	710	497
Nov 2018	561	563	731	496
Dec 2018	591	547	683	492
Jan 2019	544	562	718	499
Feb 2019	596	619	796	551
Mar 2019	743	640	787	582
Apr 2019	702	618	782	554
May 2019	539	568	726	505
Jun 2019	557	554	684	501
Jul 2019	587	550	694	492
Aug 2019	526	537	691	475
Sep 2019	550	540	669	487
Oct 2019	547	542	690	482
Nov 2019	524	560	732	492

Month	Observed	Expected	95% PI Upper Limit	95% PI Lower Limit
Dec 2019	588	541	676	487
Jan 2020	543	554	708	492
Feb 2020	573	614	795	545
Mar 2020	759	637	782	580
Apr 2020	550	620	784	556
May 2020	370	569	725	508
Jun 2020	506	550	672	501
Jul 2020	523	547	682	492
Aug 2020	492	537	688	477
Sep 2020	521	537	659	488
Oct 2020	525	544	685	488
Nov 2020	504	554	718	490
Dec 2020	581	529	680	469
Jan 2021	476	538	714	468
Feb 2021	539	594	785	522
Mar 2021	727	607	768	545
Apr 2021	557	583	765	513
May 2021	452	526	691	462

eTable 11. Observed and expected daily number of divorces, by month, with 95% prediction intervals between January 2017 and May 2021, Chubu.

Month	Observed	Expected	95% PI Upper Limit	95% PI Lower Limit
Jan 2017	83	90	117	78
Feb 2017	91	99	128	87
Mar 2017	123	102	130	89
Apr 2017	92	100	128	87
May 2017	90	91	118	79
Jun 2017	94	89	114	76
Jul 2017	87	88	114	76
Aug 2017	87	87	114	76
Sep 2017	87	87	112	75
Oct 2017	86	88	114	76
Nov 2017	84	89	116	77
Dec 2017	95	85	110	73
Jan 2018	84	88	115	77
Feb 2018	90	98	126	86
Mar 2018	117	101	128	88
Apr 2018	93	98	126	86
May 2018	89	89	116	78
Jun 2018	86	87	113	75
Jul 2018	85	87	113	75
Aug 2018	85	86	112	74
Sep 2018	81	85	110	73
Oct 2018	92	86	111	74
Nov 2018	87	87	114	76
Dec 2018	95	85	110	72
Jan 2019	84	87	113	75
Feb 2019	91	96	124	84
Mar 2019	117	99	126	86
Apr 2019	106	96	124	84
May 2019	80	88	114	76
Jun 2019	89	86	111	74
Jul 2019	88	85	111	73
Aug 2019	83	84	109	72
Sep 2019	87	84	109	71
Oct 2019	85	84	110	72
Nov 2019	80	87	114	76

Month	Observed	Expected	95% PI Upper Limit	95% PI Lower Limit
Dec 2019	92	84	109	72
Jan 2020	85	86	112	74
Feb 2020	90	95	123	84
Mar 2020	118	98	126	85
Apr 2020	84	96	124	84
May 2020	61	88	114	76
Jun 2020	82	85	110	72
Jul 2020	84	85	110	72
Aug 2020	80	83	109	72
Sep 2020	83	84	108	71
Oct 2020	85	85	110	72
Nov 2020	77	86	113	75
Dec 2020	89	83	109	72
Jan 2021	74	85	112	74
Feb 2021	86	93	122	82
Mar 2021	118	95	123	83
Apr 2021	89	92	120	81
May 2021	71	83	109	72

eTable 12. Observed and expected daily number of divorces, by month, with 95% prediction intervals between January 2017 and May 2021, Chugoku.

Month	Observed	Expected	95% PI Upper Limit	95% PI Lower Limit
Jan 2017	31	33	47	24
Feb 2017	34	36	51	27
Mar 2017	48	37	52	28
Apr 2017	33	36	51	27
May 2017	32	33	47	24
Jun 2017	33	32	45	23
Jul 2017	31	32	46	23
Aug 2017	33	31	46	23
Sep 2017	32	31	45	22
Oct 2017	31	32	46	23
Nov 2017	31	32	46	23
Dec 2017	35	31	45	22
Jan 2018	31	32	47	24
Feb 2018	33	36	51	27
Mar 2018	43	37	52	28
Apr 2018	31	35	51	27
May 2018	30	32	47	24
Jun 2018	32	31	45	22
Jul 2018	30	32	46	23
Aug 2018	32	31	45	23
Sep 2018	30	31	45	23
Oct 2018	35	31	46	23
Nov 2018	31	31	46	23
Dec 2018	33	31	45	22
Jan 2019	31	32	46	23
Feb 2019	34	35	51	27
Mar 2019	39	36	51	27
Apr 2019	38	34	50	26
May 2019	31	31	46	23
Jun 2019	31	30	44	22
Jul 2019	33	31	45	23
Aug 2019	30	30	44	22
Sep 2019	30	31	44	22
Oct 2019	31	30	45	22
Nov 2019	28	31	46	23

Month	Observed	Expected	95% PI Upper Limit	95% PI Lower Limit
Dec 2019	34	30	44	22
Jan 2020	29	31	46	23
Feb 2020	31	35	50	26
Mar 2020	43	36	51	27
Apr 2020	32	34	49	26
May 2020	22	31	45	23
Jun 2020	31	30	44	22
Jul 2020	29	30	45	22
Aug 2020	29	30	44	22
Sep 2020	27	30	44	22
Oct 2020	28	30	45	22
Nov 2020	29	31	46	23
Dec 2020	32	30	44	21
Jan 2021	28	30	45	23
Feb 2021	30	34	49	26
Mar 2021	41	35	50	26
Apr 2021	32	33	48	25
May 2021	24	29	44	21

eTable 13. Observed and expected daily number of divorces, by month, with 95% prediction intervals between January 2017 and May 2021, Hokkaido.

Month	Observed	Expected	95% PI Upper Limit	95% PI Lower Limit
Jan 2017	27	28	41	20
Feb 2017	29	32	46	23
Mar 2017	38	33	47	24
Apr 2017	29	33	47	24
May 2017	27	30	44	21
Jun 2017	28	28	41	20
Jul 2017	27	28	41	20
Aug 2017	28	28	41	20
Sep 2017	27	27	40	19
Oct 2017	27	28	41	20
Nov 2017	26	27	41	19
Dec 2017	25	26	39	18
Jan 2018	26	27	40	19
Feb 2018	28	30	45	22
Mar 2018	36	32	46	23
Apr 2018	29	31	45	22
May 2018	27	28	41	20
Jun 2018	26	27	40	19
Jul 2018	27	27	40	19
Aug 2018	27	26	40	19
Sep 2018	22	26	39	18
Oct 2018	29	26	39	18
Nov 2018	28	26	39	18
Dec 2018	26	25	37	17
Jan 2019	25	26	39	18
Feb 2019	28	29	43	21
Mar 2019	37	30	44	22
Apr 2019	34	29	43	21
May 2019	25	26	39	18
Jun 2019	25	26	38	18
Jul 2019	29	26	38	18
Aug 2019	24	25	38	18
Sep 2019	25	25	37	17
Oct 2019	27	25	38	18
Nov 2019	26	25	39	18

Month	Observed	Expected	95% PI Upper Limit	95% PI Lower Limit
Dec 2019	25	25	37	17
Jan 2020	24	25	38	18
Feb 2020	26	29	43	21
Mar 2020	36	30	44	22
Apr 2020	30	29	43	21
May 2020	17	26	40	19
Jun 2020	25	26	38	18
Jul 2020	25	25	38	18
Aug 2020	23	25	38	18
Sep 2020	25	25	37	17
Oct 2020	23	25	38	18
Nov 2020	23	25	38	18
Dec 2020	25	24	36	16
Jan 2021	21	24	37	17
Feb 2021	24	28	42	21
Mar 2021	35	29	43	21
Apr 2021	28	28	42	20
May 2021	21	25	38	18

eTable 14. Observed and expected daily number of divorces, by month, with 95% prediction intervals between January 2017 and May 2021, Kansai.

Month	Observed	Expected	95% PI Upper Limit	95% PI Lower Limit
Jan 2017	100	109	138	96
Feb 2017	113	119	150	106
Mar 2017	147	123	153	108
Apr 2017	105	120	151	107
May 2017	110	111	140	98
Jun 2017	110	108	135	94
Jul 2017	100	107	136	94
Aug 2017	104	106	135	93
Sep 2017	106	106	133	92
Oct 2017	102	107	136	94
Nov 2017	101	106	136	93
Dec 2017	111	103	130	89
Jan 2018	101	106	135	94
Feb 2018	111	117	149	104
Mar 2018	134	121	151	106
Apr 2018	108	118	148	104
May 2018	106	108	137	95
Jun 2018	102	105	133	91
Jul 2018	105	104	133	91
Aug 2018	103	102	131	90
Sep 2018	90	103	130	89
Oct 2018	107	103	131	90
Nov 2018	101	102	132	90
Dec 2018	106	100	127	86
Jan 2019	99	103	132	90
Feb 2019	108	114	145	101
Mar 2019	137	117	146	103
Apr 2019	129	113	143	100
May 2019	96	104	133	91
Jun 2019	104	101	129	88
Jul 2019	106	100	128	88
Aug 2019	94	98	126	86
Sep 2019	102	98	125	85
Oct 2019	99	99	127	86
Nov 2019	97	101	132	88

Month	Observed	Expected	95% PI Upper Limit	95% PI Lower Limit
Dec 2019	107	98	125	85
Jan 2020	99	100	129	88
Feb 2020	105	111	144	98
Mar 2020	140	115	144	101
Apr 2020	101	112	142	99
May 2020	68	103	132	91
Jun 2020	90	100	127	86
Jul 2020	95	99	126	86
Aug 2020	88	97	125	85
Sep 2020	98	97	124	84
Oct 2020	96	99	126	86
Nov 2020	92	100	130	88
Dec 2020	104	96	124	84
Jan 2021	88	98	130	84
Feb 2021	102	108	143	94
Mar 2021	134	110	140	98
Apr 2021	102	106	139	92
May 2021	83	95	125	83

eTable 15. Observed and expected daily number of divorces, by month, with 95% prediction intervals between January 2017 and May 2021, Kanto.

Month	Observed	Expected	95% PI Upper Limit	95% PI Lower Limit
Jan 2017	185	199	251	178
Feb 2017	205	214	271	191
Mar 2017	264	221	269	202
Apr 2017	204	216	269	194
May 2017	195	201	252	180
Jun 2017	206	196	237	178
Jul 2017	189	196	243	176
Aug 2017	188	191	242	170
Sep 2017	189	191	233	174
Oct 2017	188	194	244	174
Nov 2017	189	199	255	176
Dec 2017	203	192	237	173
Jan 2018	178	199	251	178
Feb 2018	197	214	272	191
Mar 2018	245	221	269	202
Apr 2018	198	215	269	194
May 2018	198	198	251	177
Jun 2018	192	194	238	175
Jul 2018	189	193	242	173
Aug 2018	192	187	240	166
Sep 2018	175	187	232	169
Oct 2018	199	189	239	168
Nov 2018	188	194	249	172
Dec 2018	202	188	235	169
Jan 2019	183	193	245	172
Feb 2019	201	209	267	187
Mar 2019	246	216	266	196
Apr 2019	237	209	262	187
May 2019	187	193	245	172
Jun 2019	185	188	232	170
Jul 2019	200	187	235	167
Aug 2019	179	181	231	160
Sep 2019	183	182	225	164
Oct 2019	186	183	231	163
Nov 2019	179	192	248	169

Month	Observed	Expected	95% PI Upper Limit	95% PI Lower Limit
Dec 2019	203	185	230	167
Jan 2020	184	190	240	169
Feb 2020	196	207	265	184
Mar 2020	246	215	262	196
Apr 2020	177	209	262	188
May 2020	117	193	244	173
Jun 2020	156	187	228	170
Jul 2020	173	185	230	167
Aug 2020	166	181	230	161
Sep 2020	176	181	221	164
Oct 2020	176	183	228	164
Nov 2020	174	188	241	167
Dec 2020	203	179	230	157
Jan 2021	164	181	241	157
Feb 2021	181	196	260	171
Mar 2021	237	200	255	178
Apr 2021	186	192	253	168
May 2021	151	174	229	152

eTable 16. Observed and expected daily number of divorces, by month, with 95% prediction intervals between January 2017 and May 2021, Kyushu & Okinawa.

Month	Observed	Expected	95% PI Upper Limit	95% PI Lower Limit
Jan 2017	70	73	96	61
Feb 2017	74	80	105	69
Mar 2017	97	84	107	71
Apr 2017	74	81	106	69
May 2017	71	75	98	63
Jun 2017	74	73	95	60
Jul 2017	67	73	96	61
Aug 2017	72	72	95	61
Sep 2017	72	71	93	59
Oct 2017	70	72	95	60
Nov 2017	69	71	95	60
Dec 2017	71	69	91	57
Jan 2018	65	71	94	60
Feb 2018	74	78	103	67
Mar 2018	97	81	105	69
Apr 2018	74	79	103	67
May 2018	75	72	96	61
Jun 2018	72	71	93	59
Jul 2018	71	71	93	59
Aug 2018	72	70	92	59
Sep 2018	65	69	91	58
Oct 2018	76	70	93	59
Nov 2018	72	70	93	59
Dec 2018	73	68	90	56
Jan 2019	71	70	92	59
Feb 2019	77	78	103	67
Mar 2019	94	81	105	68
Apr 2019	92	78	102	66
May 2019	70	72	95	61
Jun 2019	73	70	92	58
Jul 2019	74	70	92	58
Aug 2019	68	69	91	58
Sep 2019	73	69	91	57
Oct 2019	68	69	92	58
Nov 2019	69	71	94	60

Month	Observed	Expected	95% PI Upper Limit	95% PI Lower Limit
Dec 2019	71	68	90	57
Jan 2020	71	70	93	59
Feb 2020	73	79	104	68
Mar 2020	99	82	106	70
Apr 2020	71	80	105	69
May 2020	50	74	97	62
Jun 2020	70	71	93	59
Jul 2020	67	71	94	59
Aug 2020	61	70	93	59
Sep 2020	63	70	92	58
Oct 2020	69	71	94	59
Nov 2020	63	71	95	60
Dec 2020	72	68	91	57
Jan 2021	59	70	93	59
Feb 2021	70	78	103	67
Mar 2021	93	80	104	68
Apr 2021	69	76	101	66
May 2021	59	69	93	59

eTable 17. Observed and expected daily number of divorces, by month, with 95% prediction intervals between January 2017 and May 2021, Shikoku.

Month	Observed	Expected	95% PI Upper Limit	95% PI Lower Limit
Jan 2017	17	17	28	11
Feb 2017	20	19	30	13
Mar 2017	25	20	31	13
Apr 2017	19	19	31	13
May 2017	19	18	28	11
Jun 2017	17	17	27	10
Jul 2017	17	17	27	10
Aug 2017	17	17	27	10
Sep 2017	18	17	26	10
Oct 2017	17	17	27	10
Nov 2017	16	17	27	11
Dec 2017	17	17	27	10
Jan 2018	15	17	27	11
Feb 2018	18	19	30	12
Mar 2018	23	20	31	13
Apr 2018	17	19	30	12
May 2018	17	17	28	11
Jun 2018	16	16	26	10
Jul 2018	17	16	27	10
Aug 2018	17	16	26	10
Sep 2018	16	16	26	10
Oct 2018	18	16	27	10
Nov 2018	18	16	27	10
Dec 2018	18	16	26	10
Jan 2019	18	17	27	10
Feb 2019	18	19	30	12
Mar 2019	23	19	30	12
Apr 2019	20	18	29	12
May 2019	15	17	27	10
Jun 2019	16	16	26	10
Jul 2019	18	16	26	10
Aug 2019	15	16	26	10
Sep 2019	16	16	26	10
Oct 2019	16	16	26	10
Nov 2019	14	17	27	10

Month	Observed	Expected	95% PI Upper Limit	95% PI Lower Limit
Dec 2019	17	16	26	10
Jan 2020	17	17	27	11
Feb 2020	16	19	30	12
Mar 2020	22	20	31	13
Apr 2020	17	19	30	12
May 2020	12	17	27	10
Jun 2020	17	16	26	10
Jul 2020	15	16	26	10
Aug 2020	15	16	26	10
Sep 2020	15	16	26	10
Oct 2020	15	16	26	10
Nov 2020	14	16	26	10
Dec 2020	18	16	26	9
Jan 2021	15	16	27	10
Feb 2021	15	18	29	12
Mar 2021	21	18	29	12
Apr 2021	16	18	28	11
May 2021	13	16	26	10

eTable 18. Observed and expected daily number of divorces, by month, with 95% prediction intervals between January 2017 and May 2021, Tohoku.

Month	Observed	Expected	95% PI Upper Limit	95% PI Lower Limit
Jan 2017	34	37	53	28
Feb 2017	38	41	59	32
Mar 2017	53	44	61	34
Apr 2017	40	44	61	34
May 2017	39	40	57	31
Jun 2017	38	38	54	29
Jul 2017	35	37	53	28
Aug 2017	35	37	53	29
Sep 2017	38	37	52	28
Oct 2017	37	37	53	29
Nov 2017	37	37	54	29
Dec 2017	36	36	52	27
Jan 2018	34	36	52	27
Feb 2018	36	40	58	32
Mar 2018	50	43	60	33
Apr 2018	37	43	60	33
May 2018	36	38	55	30
Jun 2018	38	37	53	28
Jul 2018	36	36	52	27
Aug 2018	34	36	52	28
Sep 2018	35	36	51	27
Oct 2018	40	37	52	28
Nov 2018	36	37	53	28
Dec 2018	38	35	51	26
Jan 2019	33	35	51	26
Feb 2019	38	40	57	31
Mar 2019	50	42	59	32
Apr 2019	46	41	58	32
May 2019	35	37	54	29
Jun 2019	34	36	51	27
Jul 2019	38	35	51	26
Aug 2019	33	34	50	26
Sep 2019	35	35	50	26
Oct 2019	35	35	51	27
Nov 2019	31	36	53	28

Month	Observed	Expected	95% PI Upper Limit	95% PI Lower Limit
Dec 2019	39	34	50	26
Jan 2020	34	34	50	26
Feb 2020	37	39	56	31
Mar 2020	54	41	58	32
Apr 2020	38	41	58	32
May 2020	25	37	53	28
Jun 2020	35	35	50	26
Jul 2020	33	34	50	26
Aug 2020	30	34	50	26
Sep 2020	33	34	49	25
Oct 2020	33	36	51	27
Nov 2020	33	36	52	28
Dec 2020	38	34	49	25
Jan 2021	27	34	50	26
Feb 2021	32	39	56	31
Mar 2021	47	40	57	31
Apr 2021	34	39	56	30
May 2021	29	34	51	26

eTable 19. Observed and expected daily number of total births, by month, with 95% prediction intervals between January 2017 and May 2021, Japan.

Month	Observed	Expected	95% PI Upper Limit	95% PI Lower Limit
Jan 2017	2658	2707	2917	2617
Feb 2017	2659	2669	2857	2589
Mar 2017	2620	2649	2836	2570
Apr 2017	2591	2659	2864	2571
May 2017	2703	2685	2866	2607
Jun 2017	2653	2741	2931	2660
Jul 2017	2676	2780	2997	2688
Aug 2017	2767	2845	3039	2764
Sep 2017	2814	2840	3032	2759
Oct 2017	2721	2799	3011	2710
Nov 2017	2674	2718	2909	2637
Dec 2017	2621	2679	2865	2600
Jan 2018	2641	2633	2841	2544
Feb 2018	2570	2597	2782	2517
Mar 2018	2489	2577	2759	2499
Apr 2018	2546	2581	2788	2492
May 2018	2668	2599	2781	2521
Jun 2018	2606	2646	2831	2567
Jul 2018	2672	2678	2892	2587
Aug 2018	2690	2739	2926	2660
Sep 2018	2643	2734	2909	2660
Oct 2018	2666	2690	2893	2603
Nov 2018	2582	2615	2801	2536
Dec 2018	2484	2589	2759	2516
Jan 2019	2468	2545	2739	2461
Feb 2019	2403	2516	2693	2439
Mar 2019	2313	2493	2660	2421
Apr 2019	2371	2492	2678	2411
May 2019	2571	2512	2674	2441
Jun 2019	2440	2545	2691	2481
Jul 2019	2550	2556	2725	2483
Aug 2019	2535	2594	2742	2530
Sep 2019	2554	2582	2720	2519
Oct 2019	2495	2529	2699	2456
Nov 2019	2425	2461	2614	2394

Month	Observed	Expected	95% PI Upper Limit	95% PI Lower Limit
Dec 2019	2410	2435	2569	2375
Jan 2020	2409	2381	2538	2313
Feb 2020	2298	2358	2504	2295
Mar 2020	2295	2340	2470	2279
Apr 2020	2443	2357	2513	2288
May 2020	2321	2381	2526	2317
Jun 2020	2435	2416	2549	2355
Jul 2020	2477	2424	2584	2354
Aug 2020	2443	2460	2608	2395
Sep 2020	2528	2449	2580	2385
Oct 2020	2414	2408	2569	2337
Nov 2020	2316	2355	2501	2291
Dec 2020	2235	2322	2452	2262
Jan 2021	2056	2261	2416	2193
Feb 2021	2135	2241	2385	2178
Mar 2021	2240	2226	2353	2167
Apr 2021	2353	2254	2414	2184
May 2021	2272	2284	2432	2219

eTable 20. Observed and expected daily number of total births, by month, with 95% prediction intervals between January 2017 and May 2021, Chubu.

Month	Observed	Expected	95% PI Upper Limit	95% PI Lower Limit
Jan 2017	456	457	511	427
Feb 2017	453	454	508	423
Mar 2017	458	449	503	419
Apr 2017	440	449	503	419
May 2017	467	451	504	420
Jun 2017	450	464	518	433
Jul 2017	454	473	528	442
Aug 2017	478	485	540	453
Sep 2017	480	484	539	452
Oct 2017	464	477	532	446
Nov 2017	454	462	516	431
Dec 2017	443	457	510	425
Jan 2018	461	449	503	419
Feb 2018	444	447	499	415
Mar 2018	430	442	494	410
Apr 2018	431	440	493	410
May 2018	457	440	492	409
Jun 2018	446	450	503	419
Jul 2018	455	458	512	427
Aug 2018	460	469	523	437
Sep 2018	451	469	522	436
Oct 2018	457	460	514	429
Nov 2018	445	446	498	414
Dec 2018	427	443	494	411
Jan 2019	427	436	488	405
Feb 2019	413	435	486	403
Mar 2019	395	428	478	397
Apr 2019	398	426	478	396
May 2019	430	428	478	396
Jun 2019	417	435	485	402
Jul 2019	436	438	490	407
Aug 2019	431	445	496	412
Sep 2019	432	443	493	409
Oct 2019	427	432	483	401
Nov 2019	410	420	469	388

Month	Observed	Expected	95% PI Upper Limit	95% PI Lower Limit
Dec 2019	415	416	465	384
Jan 2020	406	407	455	376
Feb 2020	387	405	454	374
Mar 2020	388	399	446	367
Apr 2020	412	400	448	369
May 2020	386	403	451	371
Jun 2020	416	410	458	378
Jul 2020	422	413	462	382
Aug 2020	420	419	468	387
Sep 2020	431	417	464	383
Oct 2020	409	408	457	377
Nov 2020	392	399	447	368
Dec 2020	386	394	441	363
Jan 2021	357	384	431	353
Feb 2021	369	381	428	351
Mar 2021	380	376	422	345
Apr 2021	393	380	427	350
May 2021	379	384	431	354

eTable 21. Observed and expected daily number of total births, by month, with 95% prediction intervals between January 2017 and May 2021, Chugoku.

Month	Observed	Expected	95% PI Upper Limit	95% PI Lower Limit
Jan 2017	161	164	194	144
Feb 2017	163	162	191	141
Mar 2017	161	161	191	140
Apr 2017	153	160	190	140
May 2017	164	161	190	140
Jun 2017	161	165	195	144
Jul 2017	161	167	197	146
Aug 2017	166	171	201	149
Sep 2017	165	169	199	148
Oct 2017	164	167	197	146
Nov 2017	161	162	191	141
Dec 2017	160	161	191	140
Jan 2018	160	159	188	138
Feb 2018	159	157	186	136
Mar 2018	150	155	185	135
Apr 2018	150	155	184	135
May 2018	157	155	184	134
Jun 2018	153	158	188	138
Jul 2018	160	160	190	140
Aug 2018	161	164	193	143
Sep 2018	154	163	192	142
Oct 2018	166	160	190	139
Nov 2018	152	156	185	135
Dec 2018	144	156	185	135
Jan 2019	152	153	182	133
Feb 2019	145	152	180	131
Mar 2019	136	150	179	130
Apr 2019	143	148	177	128
May 2019	152	149	177	129
Jun 2019	145	151	179	131
Jul 2019	154	152	180	132
Aug 2019	153	154	182	133
Sep 2019	153	153	181	132
Oct 2019	149	149	177	129
Nov 2019	144	146	173	126

Month	Observed	Expected	95% PI Upper Limit	95% PI Lower Limit
Dec 2019	145	145	172	124
Jan 2020	142	142	169	122
Feb 2020	141	141	169	121
Mar 2020	137	140	167	120
Apr 2020	146	140	167	120
May 2020	134	141	168	121
Jun 2020	146	143	170	123
Jul 2020	150	144	172	124
Aug 2020	146	146	173	126
Sep 2020	150	145	173	125
Oct 2020	146	143	170	123
Nov 2020	136	140	167	120
Dec 2020	135	138	164	118
Jan 2021	128	135	162	116
Feb 2021	130	135	161	115
Mar 2021	133	133	160	114
Apr 2021	140	133	160	114
May 2021	135	135	162	116

eTable 22. Observed and expected daily number of total births, by month, with 95% prediction intervals between January 2017 and May 2021, Hokkaido.

Month	Observed	Expected	95% PI Upper Limit	95% PI Lower Limit
Jan 2017	95	98	121	81
Feb 2017	94	97	119	80
Mar 2017	94	97	120	81
Apr 2017	98	98	121	82
May 2017	97	98	121	82
Jun 2017	98	99	122	83
Jul 2017	101	100	123	83
Aug 2017	101	103	126	86
Sep 2017	101	102	126	85
Oct 2017	99	101	124	84
Nov 2017	98	98	120	81
Dec 2017	92	96	118	80
Jan 2018	93	93	115	77
Feb 2018	94	92	114	76
Mar 2018	90	93	115	77
Apr 2018	90	93	115	77
May 2018	97	94	116	77
Jun 2018	94	95	117	78
Jul 2018	96	96	118	79
Aug 2018	98	98	120	81
Sep 2018	94	98	121	81
Oct 2018	95	97	119	80
Nov 2018	91	93	115	77
Dec 2018	89	92	114	76
Jan 2019	87	90	111	74
Feb 2019	85	89	110	73
Mar 2019	83	89	111	73
Apr 2019	87	89	111	73
May 2019	93	90	111	74
Jun 2019	86	91	112	74
Jul 2019	94	91	113	75
Aug 2019	91	93	114	76
Sep 2019	91	92	114	76
Oct 2019	89	90	112	74
Nov 2019	87	87	108	71

Month	Observed	Expected	95% PI Upper Limit	95% PI Lower Limit
Dec 2019	85	86	107	70
Jan 2020	84	83	104	68
Feb 2020	83	83	104	68
Mar 2020	81	84	104	68
Apr 2020	89	84	105	69
May 2020	80	85	106	69
Jun 2020	86	86	107	70
Jul 2020	86	86	107	70
Aug 2020	85	88	109	72
Sep 2020	86	87	108	71
Oct 2020	84	85	106	70
Nov 2020	77	83	103	67
Dec 2020	80	81	102	66
Jan 2021	76	79	99	64
Feb 2021	74	79	99	64
Mar 2021	82	79	99	64
Apr 2021	87	80	100	65
May 2021	82	81	101	65

eTable 23. Observed and expected daily number of total births, by month, with 95% prediction intervals between January 2017 and May 2021, Kansai.

Month	Observed	Expected	95% PI Upper Limit	95% PI Lower Limit
Jan 2017	475	475	530	443
Feb 2017	465	469	523	437
Mar 2017	464	468	522	436
Apr 2017	456	467	521	435
May 2017	474	471	524	438
Jun 2017	465	481	536	449
Jul 2017	472	489	545	457
Aug 2017	485	501	555	467
Sep 2017	485	499	554	466
Oct 2017	475	492	548	460
Nov 2017	472	479	533	446
Dec 2017	463	472	525	439
Jan 2018	459	463	516	431
Feb 2018	456	457	510	425
Mar 2018	445	455	508	423
Apr 2018	448	454	507	423
May 2018	473	456	508	424
Jun 2018	458	465	518	433
Jul 2018	487	471	525	439
Aug 2018	474	480	533	447
Sep 2018	465	479	532	446
Oct 2018	464	472	526	440
Nov 2018	457	460	512	428
Dec 2018	436	455	507	422
Jan 2019	443	446	498	415
Feb 2019	422	444	495	411
Mar 2019	413	441	492	409
Apr 2019	419	440	492	409
May 2019	458	442	492	409
Jun 2019	438	449	500	416
Jul 2019	448	451	502	418
Aug 2019	454	457	507	422
Sep 2019	450	453	502	418
Oct 2019	443	444	494	411
Nov 2019	433	433	482	400

Month	Observed	Expected	95% PI Upper Limit	95% PI Lower Limit
Dec 2019	436	430	478	396
Jan 2020	436	420	469	388
Feb 2020	413	418	465	385
Mar 2020	409	415	462	382
Apr 2020	435	418	467	386
May 2020	418	422	471	389
Jun 2020	433	430	478	396
Jul 2020	443	432	481	399
Aug 2020	434	437	486	403
Sep 2020	449	434	481	399
Oct 2020	432	427	476	394
Nov 2020	415	420	468	387
Dec 2020	397	416	463	383
Jan 2021	370	404	452	372
Feb 2021	387	402	449	369
Mar 2021	400	398	444	365
Apr 2021	425	404	452	372
May 2021	400	409	457	377

eTable 24. Observed and expected daily number of total births, by month, with 95% prediction intervals between January 2017 and May 2021, Kanto.

Month	Observed	Expected	95% PI Upper Limit	95% PI Lower Limit
Jan 2017	879	904	985	865
Feb 2017	876	886	965	847
Mar 2017	858	877	954	837
Apr 2017	859	885	964	846
May 2017	900	898	977	858
Jun 2017	880	918	996	877
Jul 2017	893	928	1010	890
Aug 2017	912	949	1031	909
Sep 2017	946	951	1031	909
Oct 2017	908	941	1023	902
Nov 2017	885	917	997	877
Dec 2017	868	900	978	859
Jan 2018	872	883	962	845
Feb 2018	839	866	944	827
Mar 2018	820	858	933	817
Apr 2018	848	864	943	826
May 2018	899	875	952	835
Jun 2018	872	890	967	849
Jul 2018	886	897	977	858
Aug 2018	901	916	996	876
Sep 2018	887	916	993	873
Oct 2018	899	903	983	864
Nov 2018	860	879	957	840
Dec 2018	837	866	941	825
Jan 2019	814	850	928	812
Feb 2019	800	835	911	797
Mar 2019	765	828	900	787
Apr 2019	785	832	908	794
May 2019	882	843	917	802
Jun 2019	819	854	925	809
Jul 2019	860	855	930	814
Aug 2019	846	868	941	825
Sep 2019	867	867	938	821
Oct 2019	847	851	926	811
Nov 2019	820	829	902	788

Month	Observed	Expected	95% PI Upper Limit	95% PI Lower Limit
Dec 2019	806	817	886	773
Jan 2020	807	799	872	760
Feb 2020	767	787	859	748
Mar 2020	778	781	849	739
Apr 2020	822	793	866	754
May 2020	797	804	877	764
Jun 2020	822	818	887	774
Jul 2020	833	816	890	777
Aug 2020	826	829	903	789
Sep 2020	851	828	898	784
Oct 2020	816	817	891	778
Nov 2020	786	798	871	759
Dec 2020	745	783	851	741
Jan 2021	658	762	833	724
Feb 2021	698	752	822	714
Mar 2021	749	748	814	706
Apr 2021	782	764	835	726
May 2021	775	776	847	737

eTable 25. Observed and expected daily number of total births, by month, with 95% prediction intervals between January 2017 and May 2021, Kyushu & Okinawa.

Month	Observed	Expected	95% PI Upper Limit	95% PI Lower Limit
Jan 2017	346	358	404	329
Feb 2017	358	352	396	322
Mar 2017	341	349	393	319
Apr 2017	343	348	394	320
May 2017	347	351	395	320
Jun 2017	351	356	402	327
Jul 2017	348	363	410	335
Aug 2017	364	373	419	342
Sep 2017	373	371	418	342
Oct 2017	359	363	410	334
Nov 2017	358	353	398	323
Dec 2017	356	350	395	321
Jan 2018	353	347	392	318
Feb 2018	342	340	384	311
Mar 2018	330	337	381	308
Apr 2018	340	335	380	307
May 2018	340	338	381	309
Jun 2018	341	343	388	315
Jul 2018	343	351	397	322
Aug 2018	348	361	406	331
Sep 2018	351	360	405	330
Oct 2018	347	353	398	324
Nov 2018	343	345	389	316
Dec 2018	329	344	388	314
Jan 2019	329	339	384	311
Feb 2019	319	333	376	304
Mar 2019	307	330	373	301
Apr 2019	321	327	371	299
May 2019	325	329	372	300
Jun 2019	317	332	375	303
Jul 2019	328	336	380	307
Aug 2019	333	343	386	312
Sep 2019	334	341	384	311
Oct 2019	321	334	378	306
Nov 2019	323	327	369	298

Month	Observed	Expected	95% PI Upper Limit	95% PI Lower Limit
Dec 2019	314	325	367	296
Jan 2020	321	319	361	290
Feb 2020	305	313	354	284
Mar 2020	298	311	352	282
Apr 2020	319	310	352	282
May 2020	300	312	353	283
Jun 2020	313	314	355	285
Jul 2020	323	317	359	288
Aug 2020	320	323	365	294
Sep 2020	336	322	363	292
Oct 2020	319	316	358	288
Nov 2020	309	310	351	282
Dec 2020	297	308	348	279
Jan 2021	282	301	342	273
Feb 2021	288	297	337	269
Mar 2021	295	296	336	268
Apr 2021	314	296	336	268
May 2021	299	299	339	271

eTable 26. Observed and expected daily number of total births, by month, with 95% prediction intervals between January 2017 and May 2021, Shikoku.

Month	Observed	Expected	95% PI Upper Limit	95% PI Lower Limit
Jan 2017	77	79	99	64
Feb 2017	81	78	98	63
Mar 2017	78	77	97	62
Apr 2017	77	77	97	62
May 2017	77	78	98	63
Jun 2017	78	80	100	65
Jul 2017	75	81	101	65
Aug 2017	82	82	102	66
Sep 2017	82	82	102	66
Oct 2017	79	81	101	65
Nov 2017	79	78	98	63
Dec 2017	77	77	97	62
Jan 2018	80	76	96	62
Feb 2018	76	76	95	61
Mar 2018	72	75	94	60
Apr 2018	76	75	94	60
May 2018	74	75	95	60
Jun 2018	75	77	96	62
Jul 2018	78	78	97	63
Aug 2018	80	79	99	64
Sep 2018	76	79	99	64
Oct 2018	72	78	98	63
Nov 2018	74	76	96	61
Dec 2018	72	75	95	60
Jan 2019	69	74	94	59
Feb 2019	71	74	93	59
Mar 2019	68	73	92	58
Apr 2019	67	72	91	57
May 2019	70	72	92	58
Jun 2019	67	73	92	58
Jul 2019	71	73	93	59
Aug 2019	74	74	93	59
Sep 2019	72	74	93	59
Oct 2019	68	72	91	57
Nov 2019	69	70	88	55

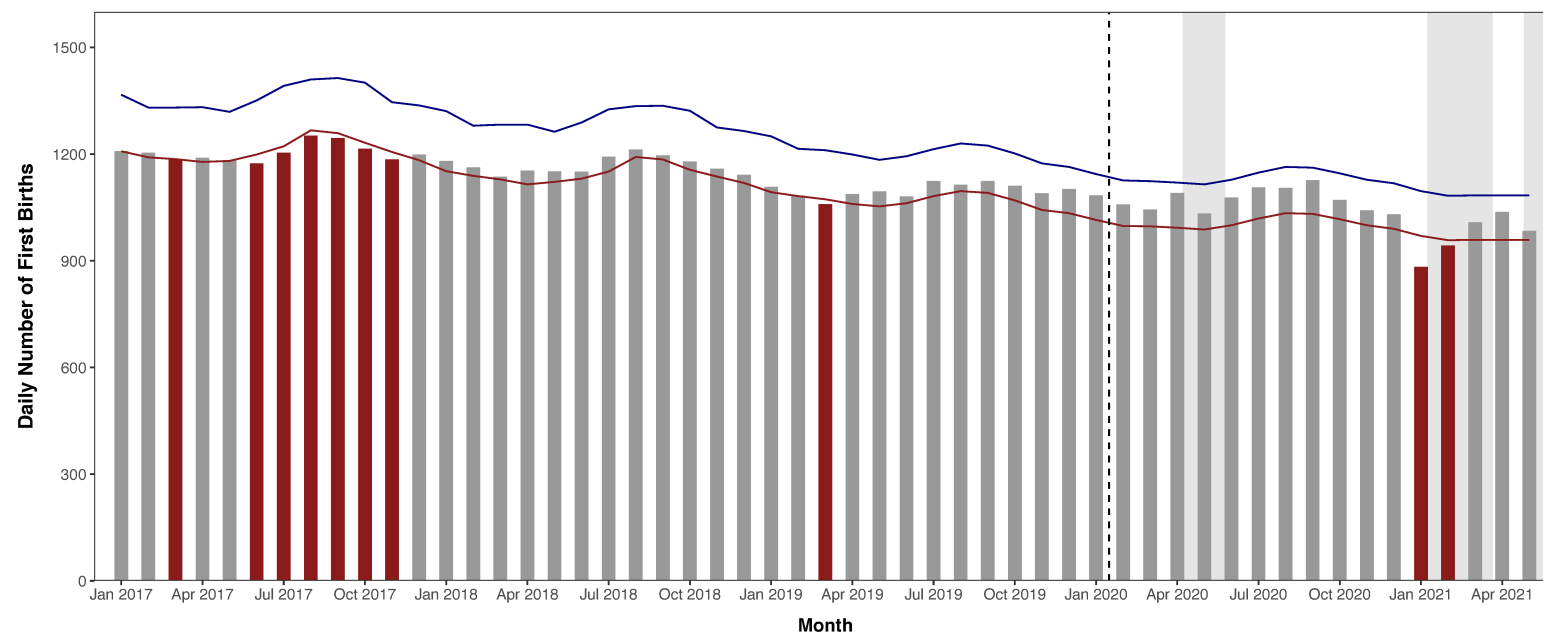
Month	Observed	Expected	95% PI Upper Limit	95% PI Lower Limit
Dec 2019	69	70	88	55
Jan 2020	68	68	87	54
Feb 2020	66	68	86	53
Mar 2020	66	67	85	53
Apr 2020	67	67	85	53
May 2020	65	67	85	53
Jun 2020	67	68	86	53
Jul 2020	68	69	87	54
Aug 2020	67	70	88	55
Sep 2020	71	69	87	54
Oct 2020	64	67	85	53
Nov 2020	65	66	84	52
Dec 2020	62	65	83	51
Jan 2021	62	64	82	50
Feb 2021	60	63	81	49
Mar 2021	69	62	80	49
Apr 2021	67	62	80	48
May 2021	65	62	80	48

eTable 27. Observed and expected daily number of total births, by month, with 95% prediction intervals between January 2017 and May 2021, Tohoku.

Month	Observed	Expected	95% PI Upper Limit	95% PI Lower Limit
Jan 2017	170	173	205	152
Feb 2017	169	172	203	151
Mar 2017	166	172	202	150
Apr 2017	164	175	207	154
May 2017	177	176	208	155
Jun 2017	169	178	209	156
Jul 2017	172	179	211	158
Aug 2017	178	182	215	161
Sep 2017	182	182	214	160
Oct 2017	172	177	210	157
Nov 2017	167	169	200	149
Dec 2017	162	167	197	146
Jan 2018	164	163	194	143
Feb 2018	160	162	192	141
Mar 2018	151	162	192	142
Apr 2018	162	165	196	145
May 2018	171	166	196	145
Jun 2018	167	167	198	146
Jul 2018	167	168	200	148
Aug 2018	168	172	203	151
Sep 2018	166	172	202	150
Oct 2018	166	167	199	147
Nov 2018	162	160	191	140
Dec 2018	150	159	189	139
Jan 2019	147	155	185	136
Feb 2019	147	155	184	135
Mar 2019	145	155	184	135
Apr 2019	152	156	186	136
May 2019	161	158	188	138
Jun 2019	150	160	189	139
Jul 2019	159	159	189	139
Aug 2019	153	161	191	141
Sep 2019	155	160	189	139
Oct 2019	151	156	186	136
Nov 2019	140	149	178	129

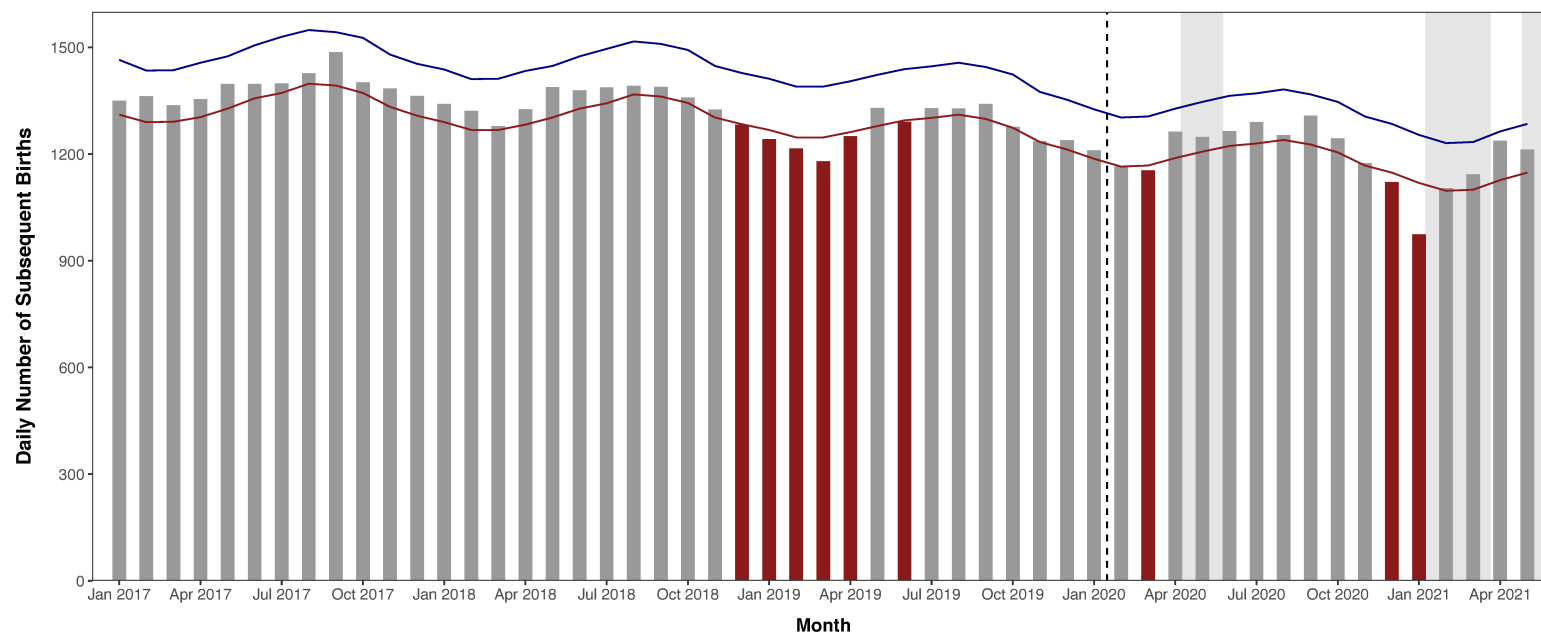
Month	Observed	Expected	95% PI Upper Limit	95% PI Lower Limit
Dec 2019	139	148	176	128
Jan 2020	146	143	171	123
Feb 2020	137	143	170	123
Mar 2020	139	143	170	123
Apr 2020	152	145	173	125
May 2020	141	147	175	127
Jun 2020	151	148	176	128
Jul 2020	152	147	175	127
Aug 2020	145	149	177	129
Sep 2020	155	148	175	127
Oct 2020	145	144	173	125
Nov 2020	136	139	166	119
Dec 2020	131	137	164	117
Jan 2021	123	133	160	114
Feb 2021	129	133	160	114
Mar 2021	132	133	160	114
Apr 2021	146	136	164	117
May 2021	137	138	166	119

eFigure 1. Observed and expected daily number of first births, by month, with 95% prediction intervals between January 2017 and May 2021, Japan.



The blue and red lines represent the upper and lower thresholds, respectively, of the 95% prediction interval around the expected value for any given month. Red bars indicate observed values significantly lower than predicted (observed < 95% PI lower limit). Grey shading corresponds to states of emergency in the Tokyo area. The dotted black line denotes the start of the COVID-19 pandemic.

eFigure 2. Observed and expected daily number of subsequent births, by month, with 95% prediction intervals between January 2017 and May 2021, Japan.



The blue and red lines represent the upper and lower thresholds, respectively, of the 95% prediction interval around the expected value for any given month. Red bars indicate observed values significantly lower than predicted (observed < 95% PI lower limit). Grey shading corresponds to states of emergency in the Tokyo area. The dotted black line denotes the start of the COVID-19 pandemic.