

# Supplementary Information

## Allosteric kidney-type glutaminase (GLS1) inhibitors with a mercaptoethyl linker

*Bridget Duvall,<sup>†</sup> Sarah C. Zimmermann,<sup>†,‡</sup> Run-Duo Gao,<sup>†</sup> Ajit G. Thomas,<sup>†</sup> Filip Kalčic,<sup>†</sup>  
Vijayabhaskar Veeravalli,<sup>†,‡</sup> Amira Elgogary,<sup>||</sup> Rana Rais,<sup>†,‡</sup> Camilo Rojas,<sup>†,§</sup> Anne Le,<sup>||</sup> Barbara  
S. Slusher,<sup>†,‡</sup> and Takashi Tsukamoto<sup>\*,†,‡</sup>*

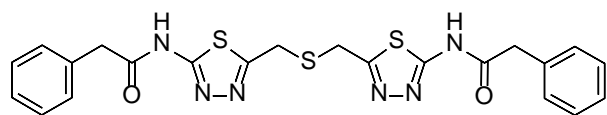
<sup>†</sup>Johns Hopkins Drug Discovery, <sup>‡</sup>Department of Neurology, and <sup>§</sup>Department of Molecular and  
Comparative Pathobiology, <sup>||</sup>Department of Pathology, Johns Hopkins University, Baltimore,  
MD 21205, USA

\*Corresponding author. E-mail: [ttsukamoto@jhmi.edu](mailto:ttsukamoto@jhmi.edu).

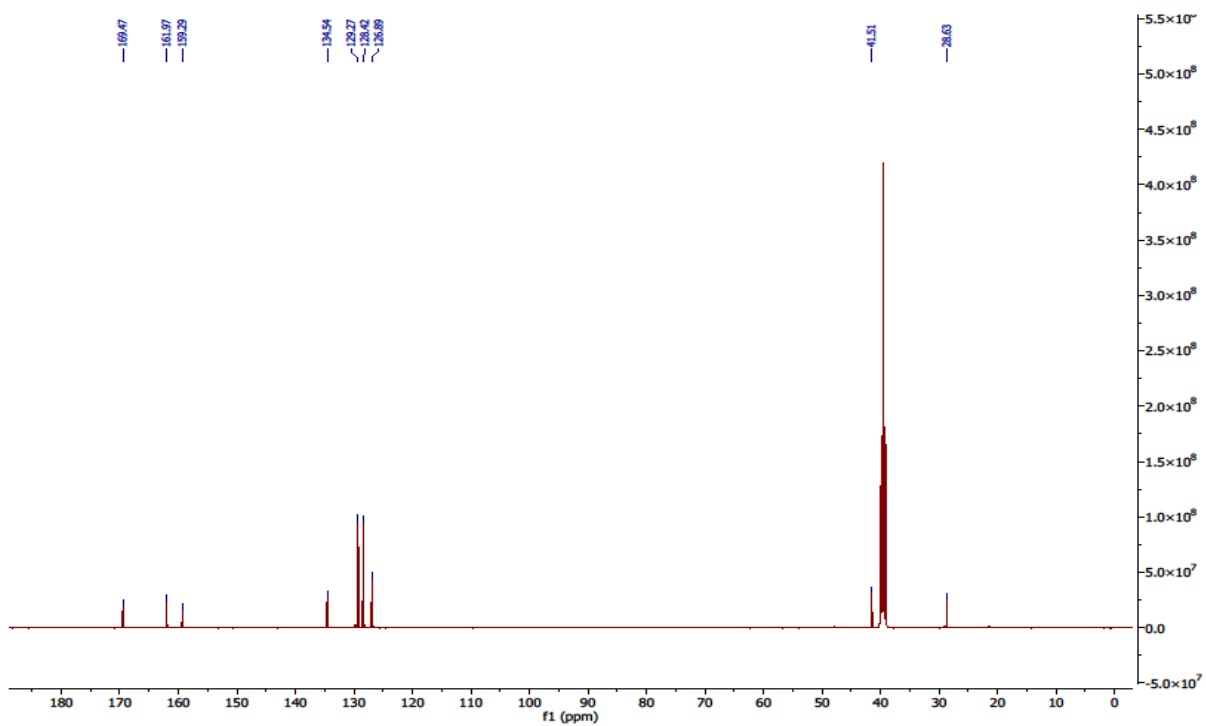
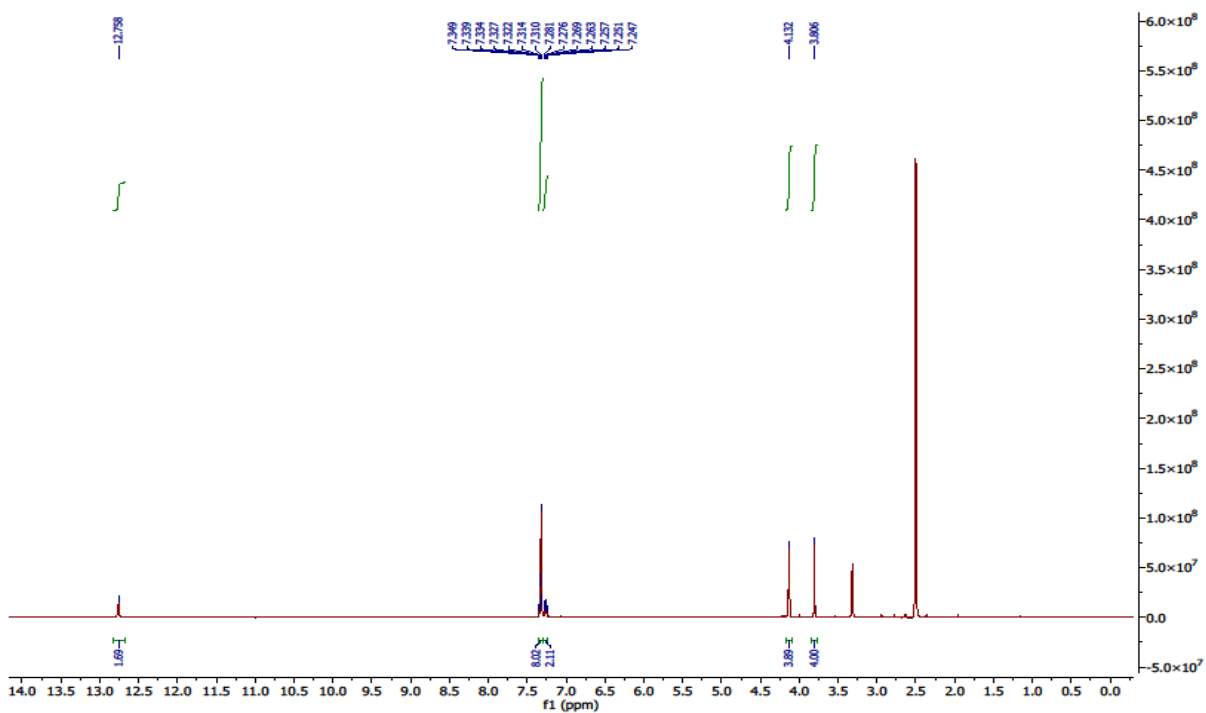
### Contents

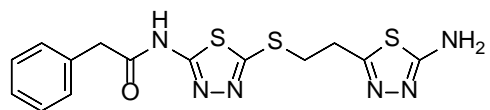
**<sup>1</sup>H and <sup>13</sup>C NMR spectra of biologically tested compounds**

**Figure S1. Dose-response curve obtained for compound 3a tested at eight concentrations in  
GLS assay**

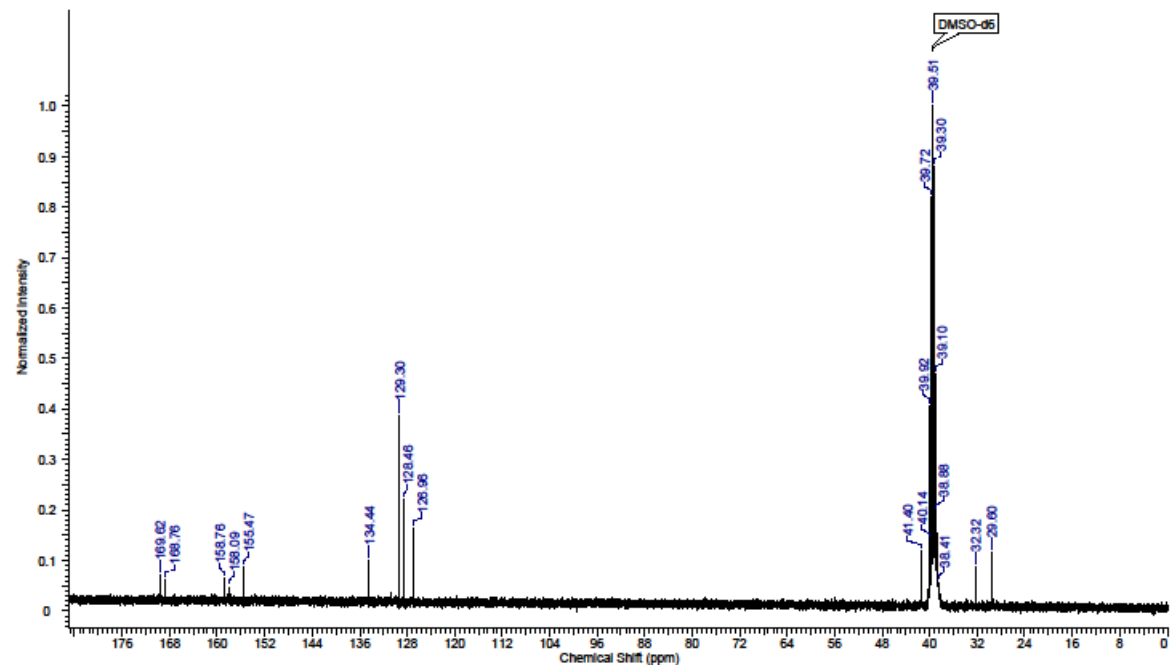
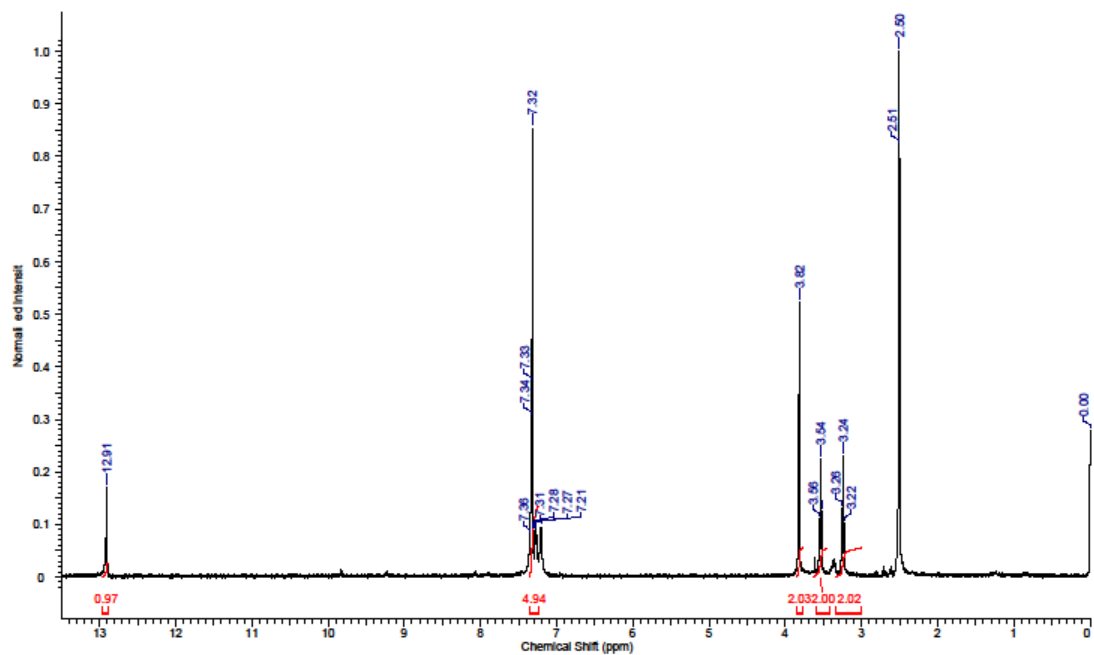


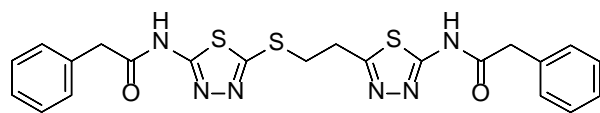
Compound **2b**



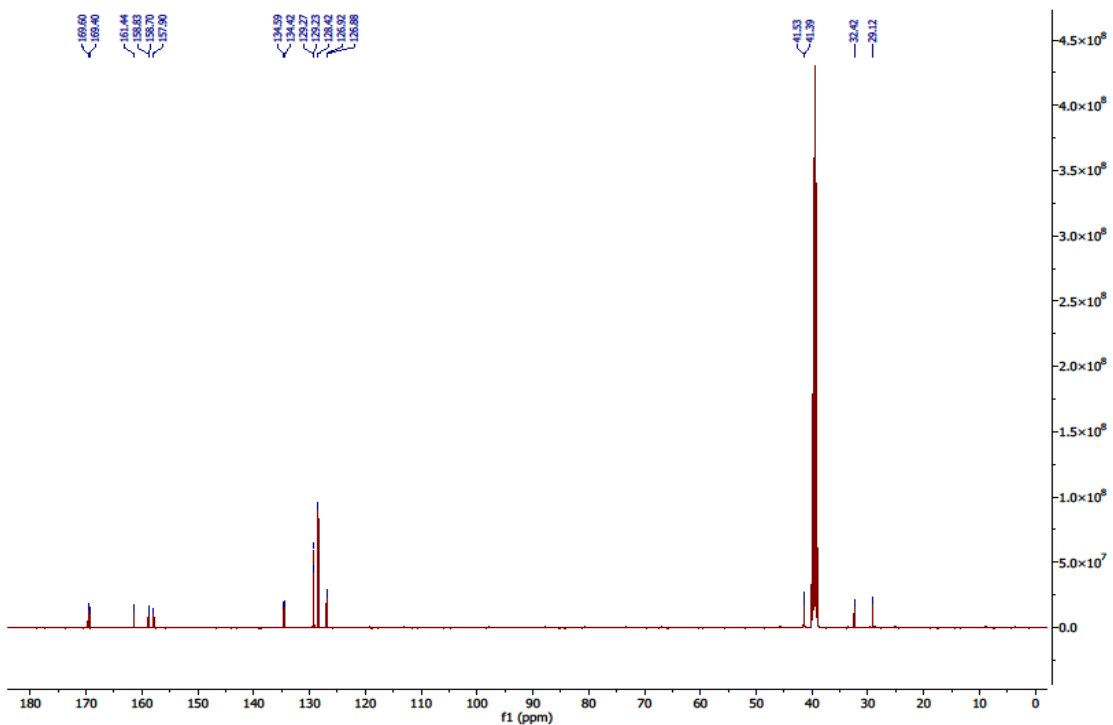
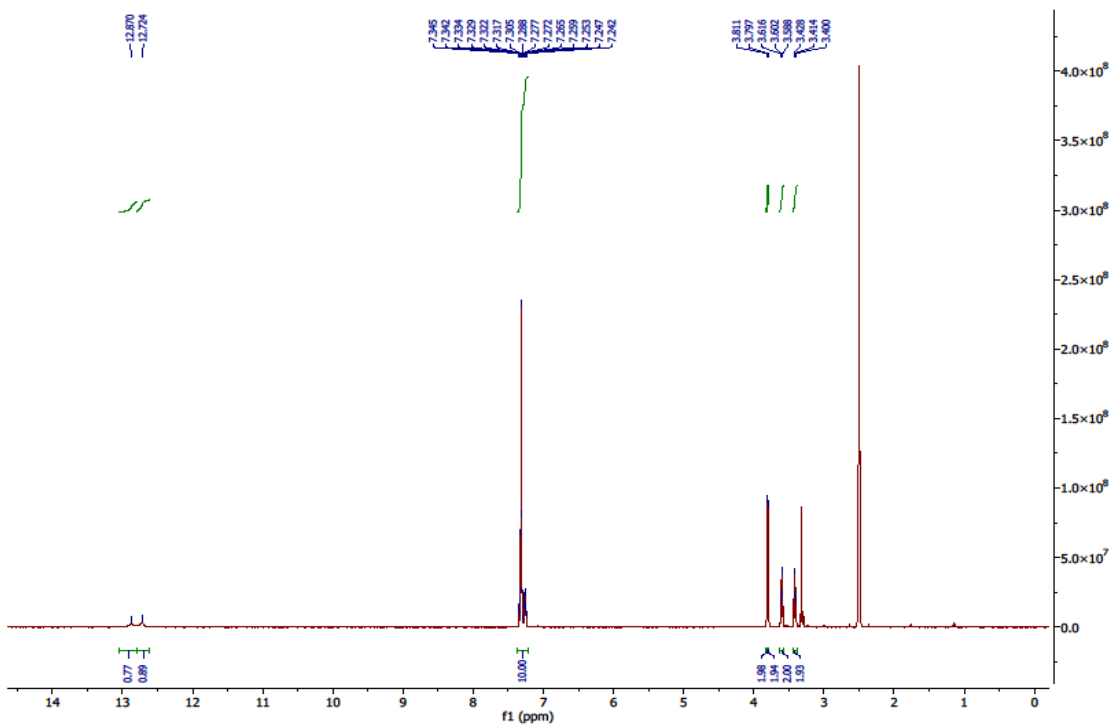


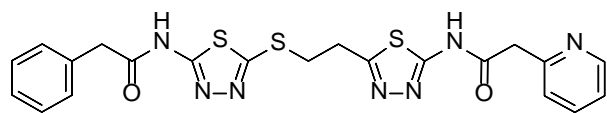
Compound 8



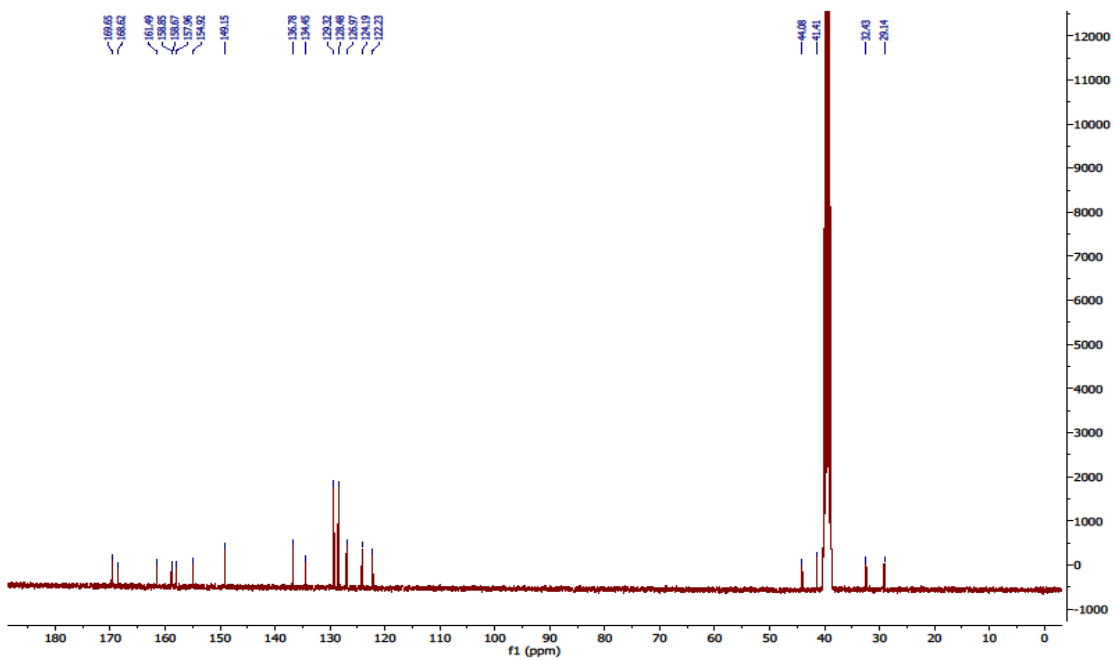
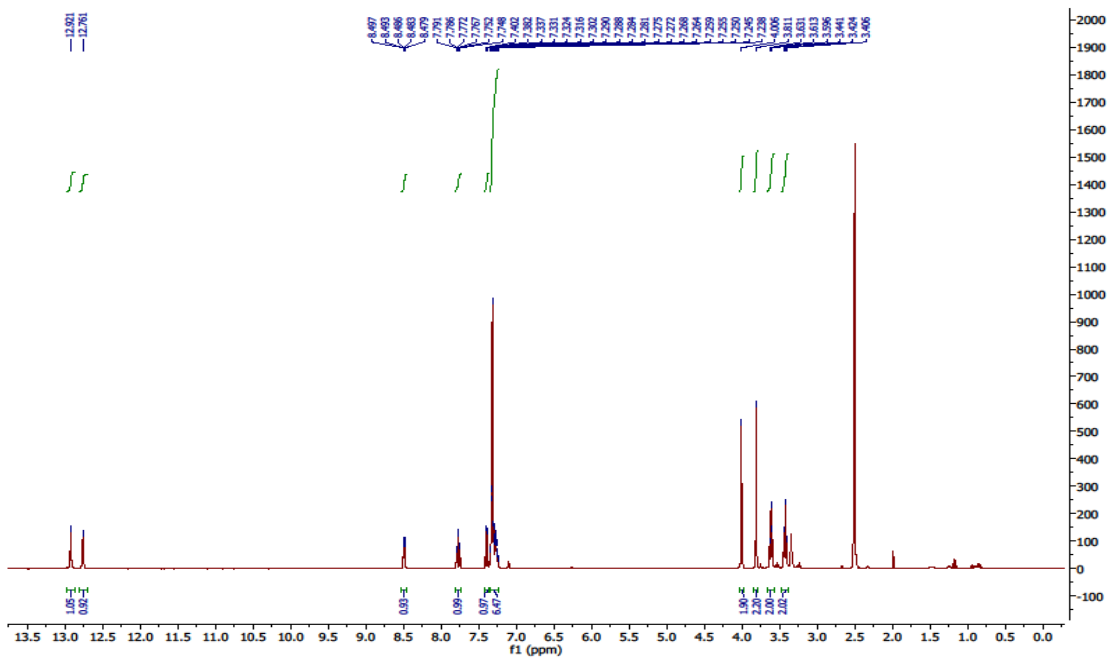


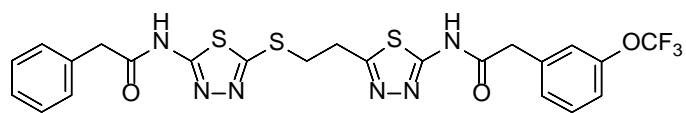
Compound **3a**



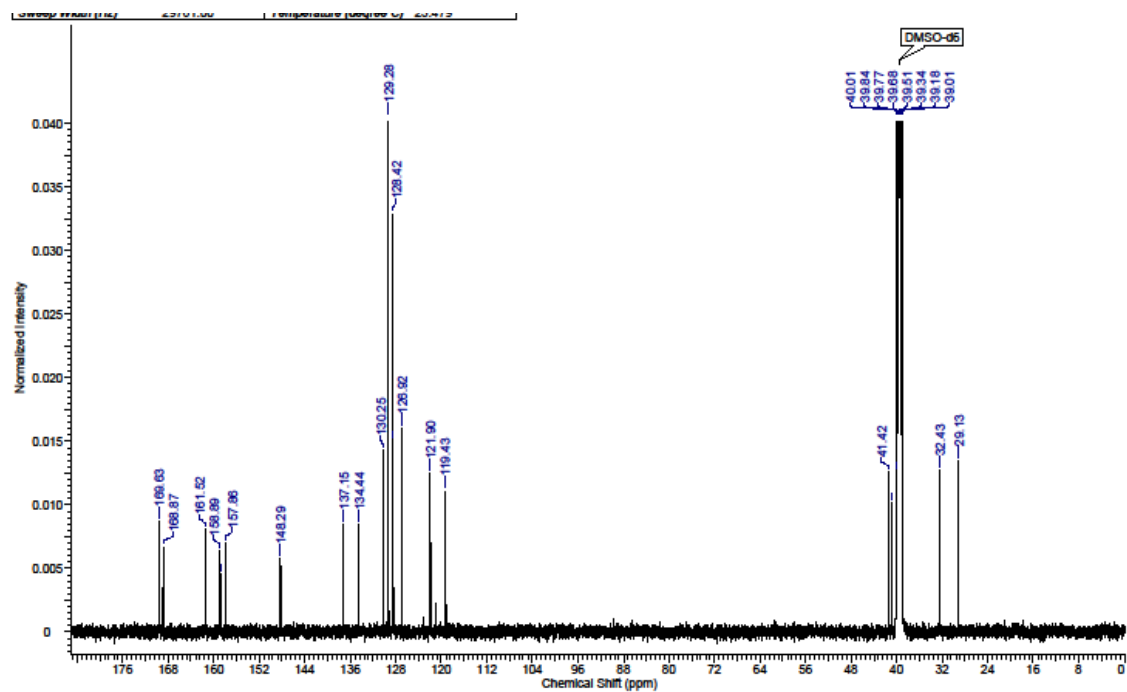
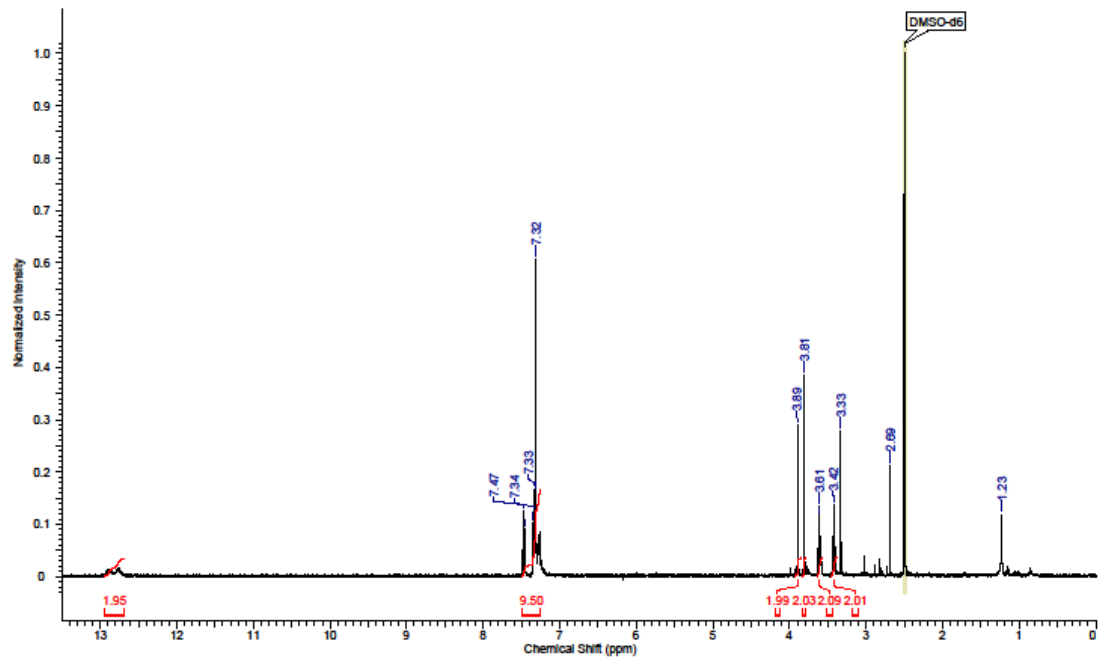


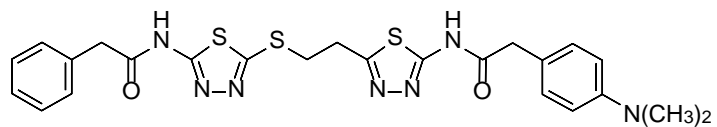
Compound **3b**



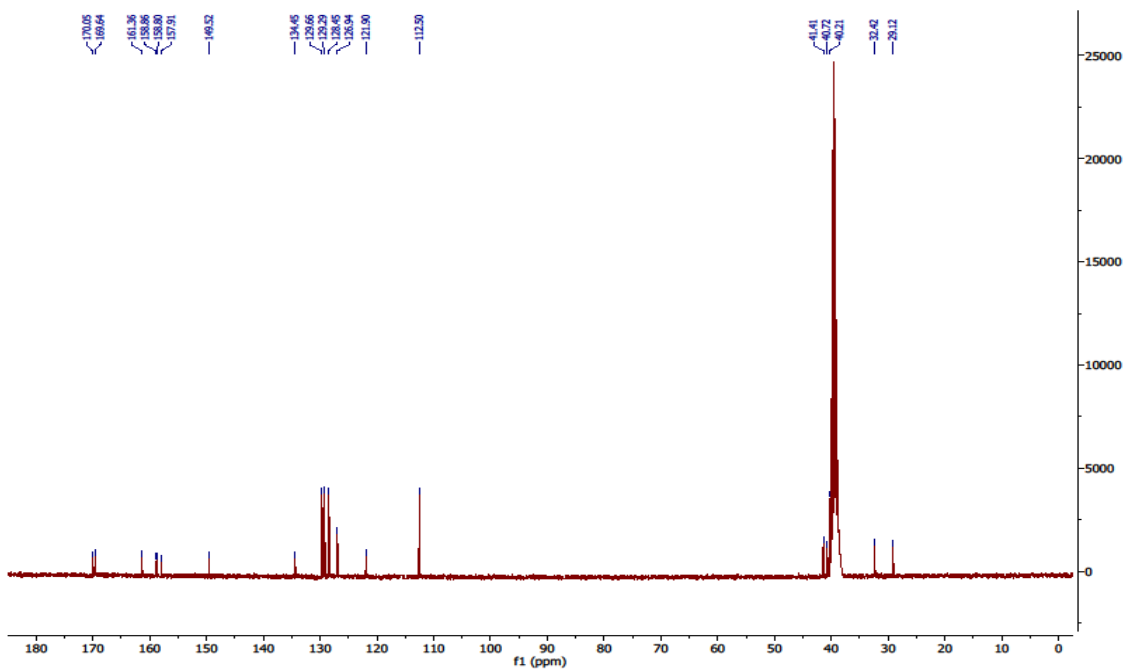
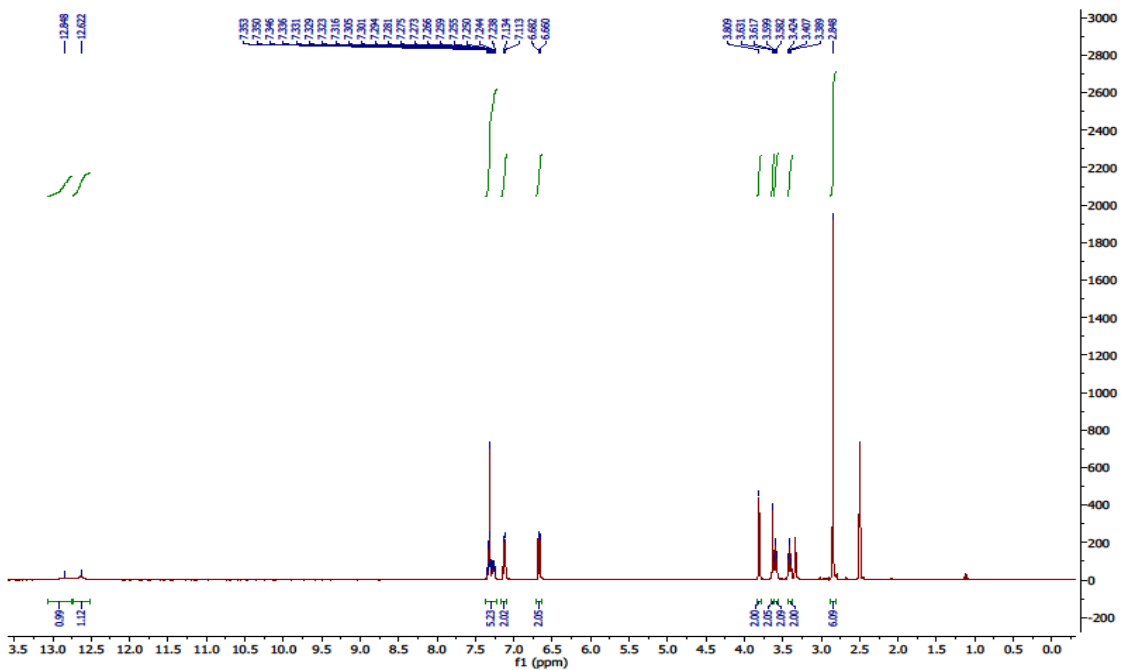


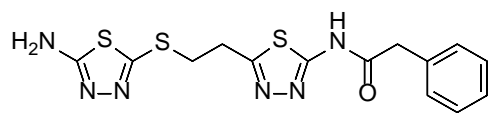
Compound **3c**



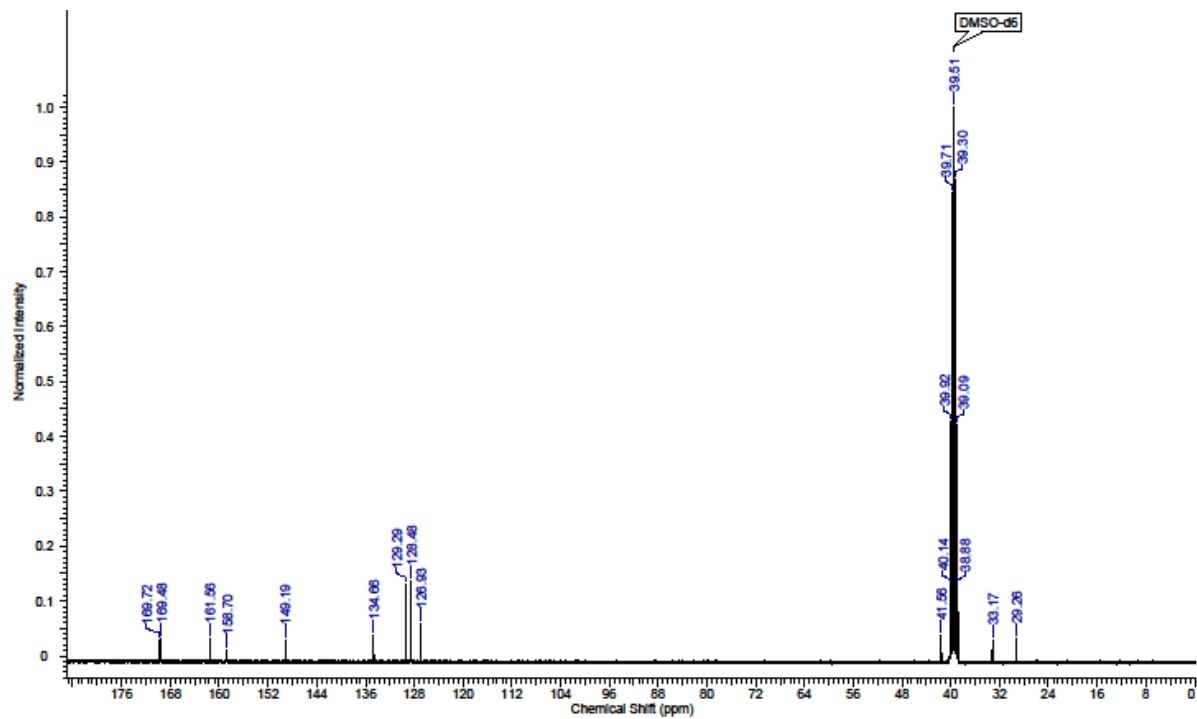
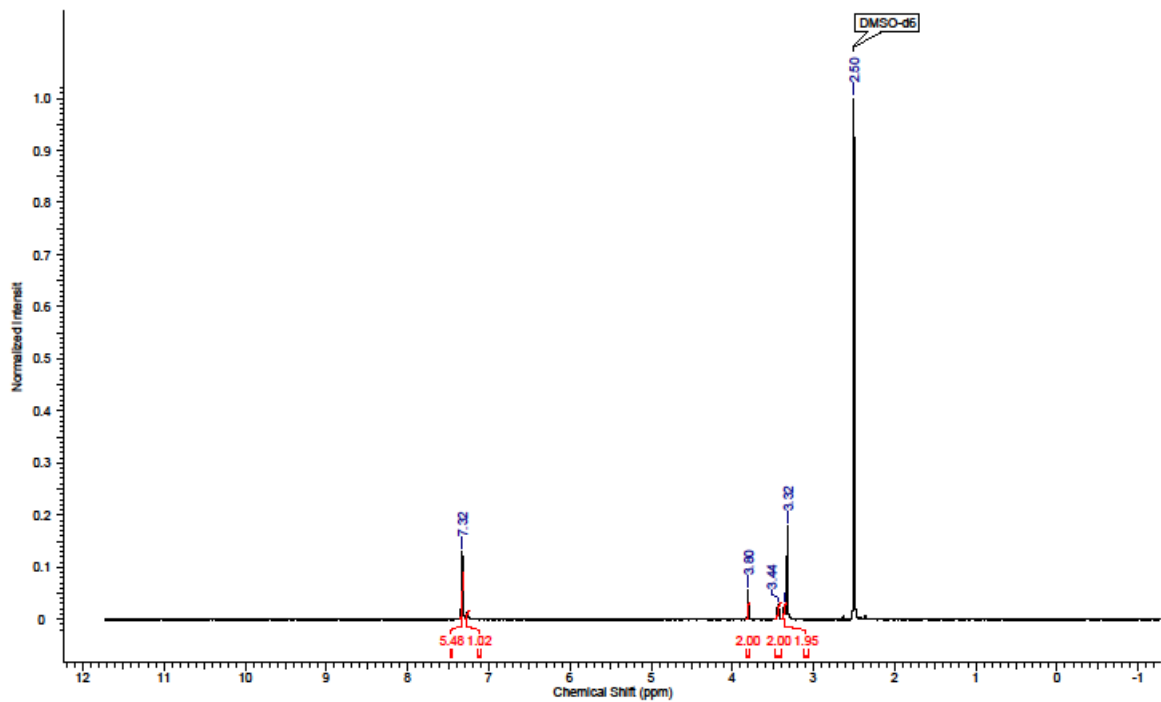


Compound 3d

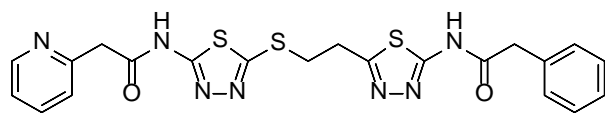




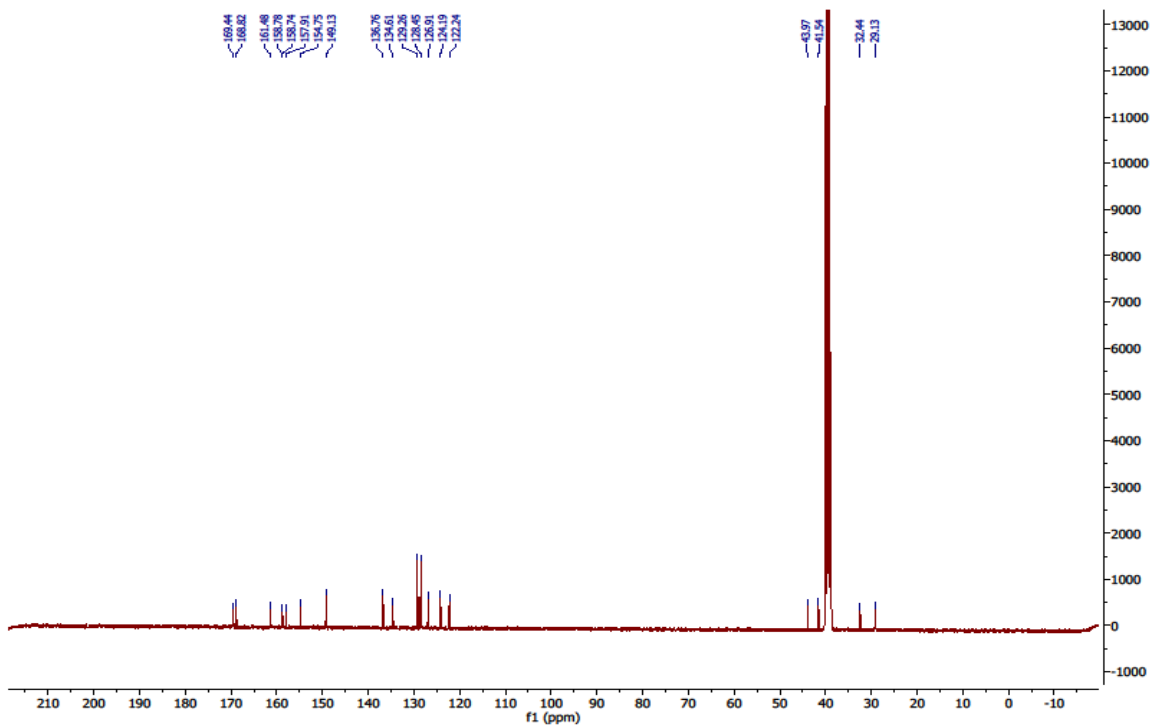
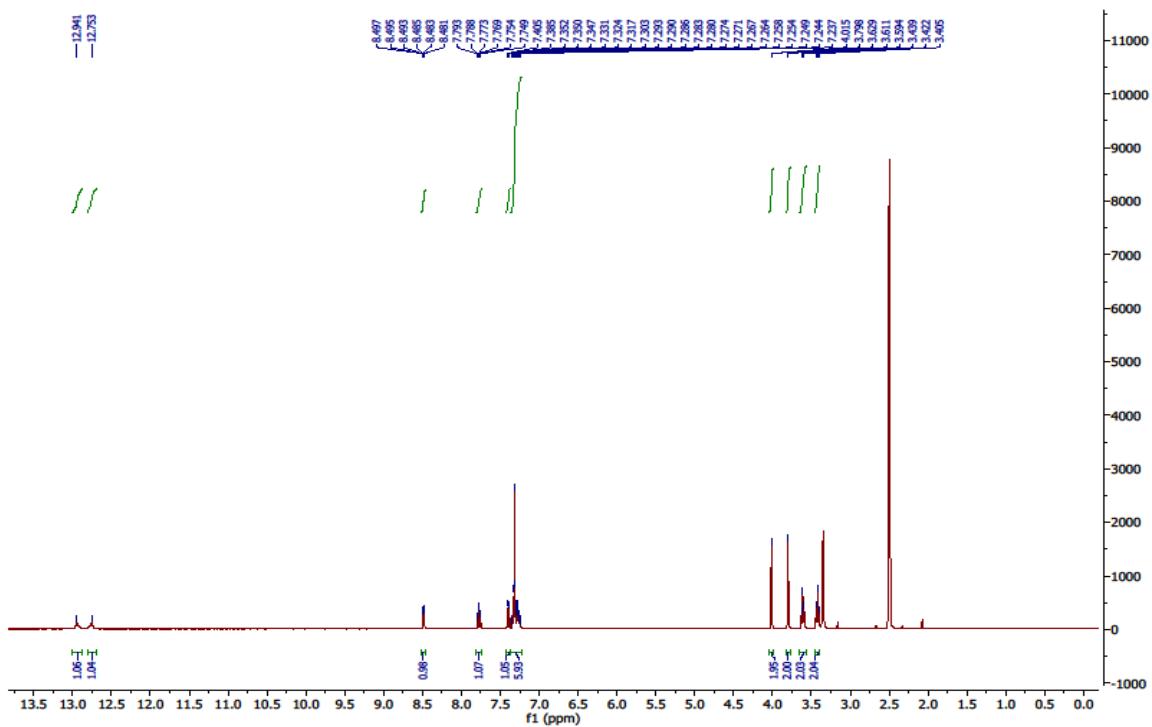
Compound 14

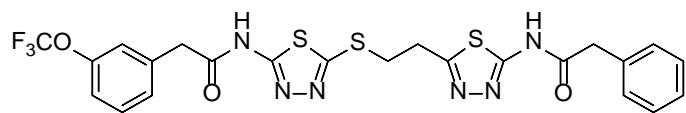




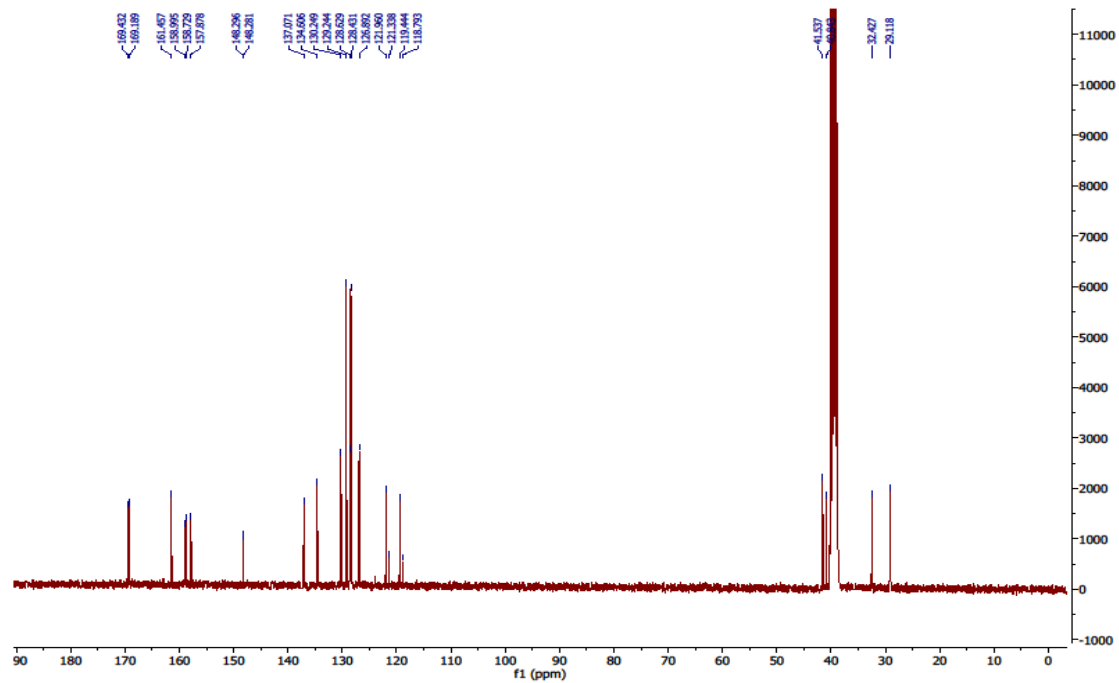
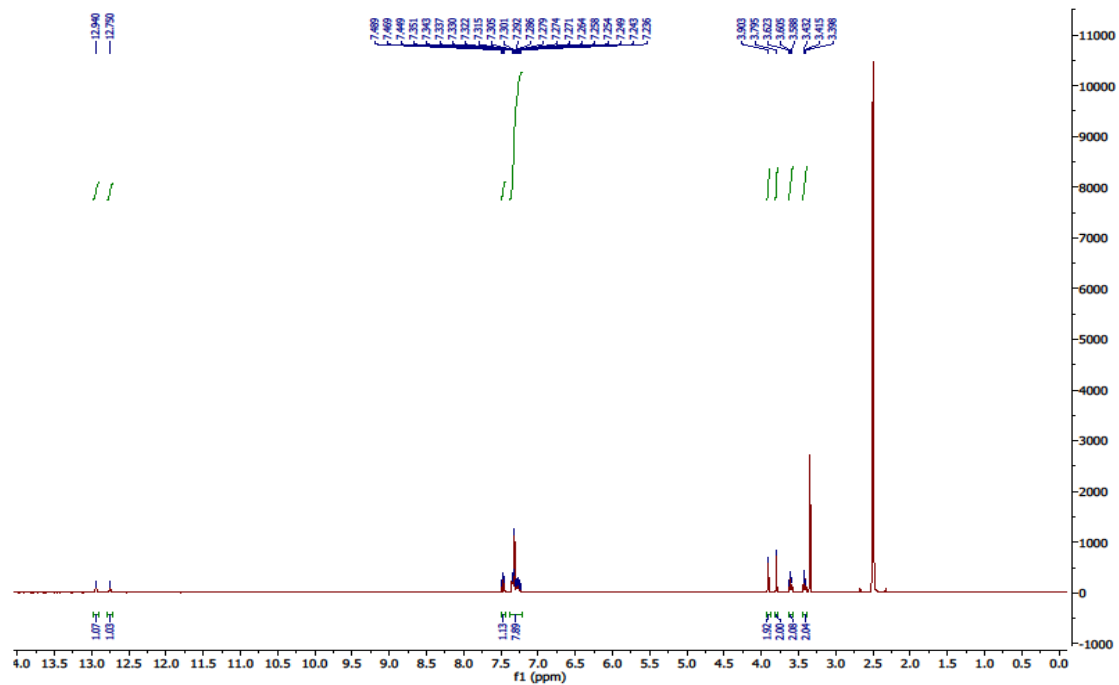


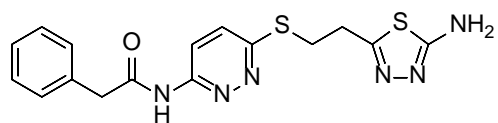
Compound 15a



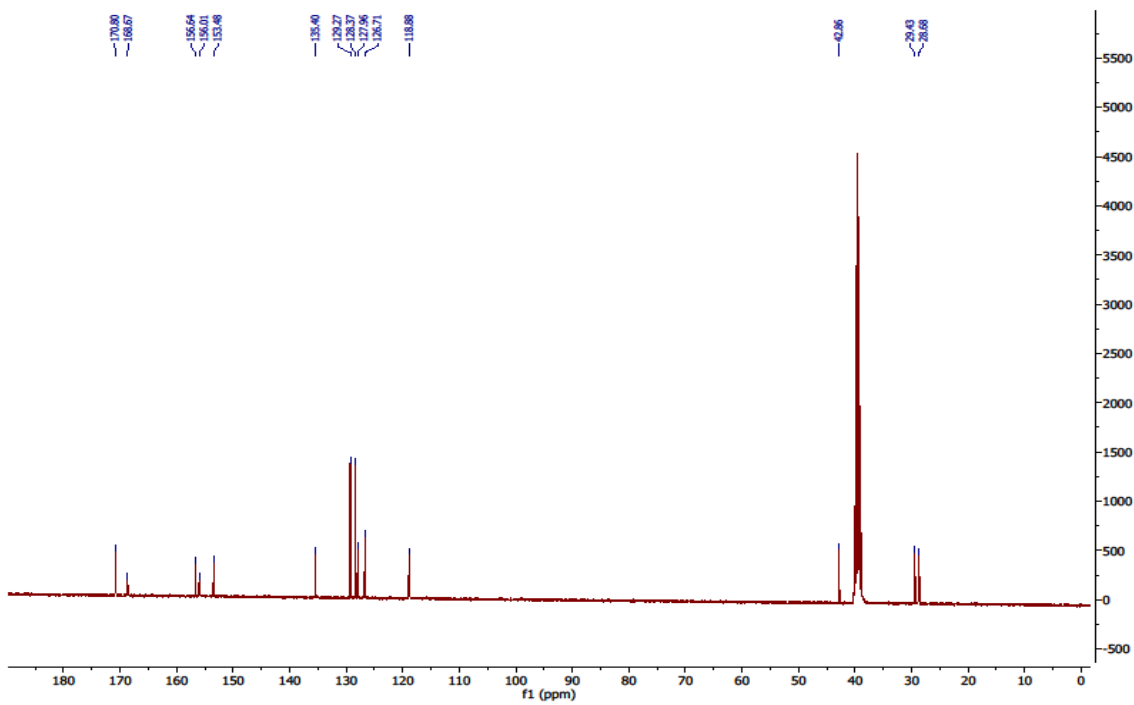
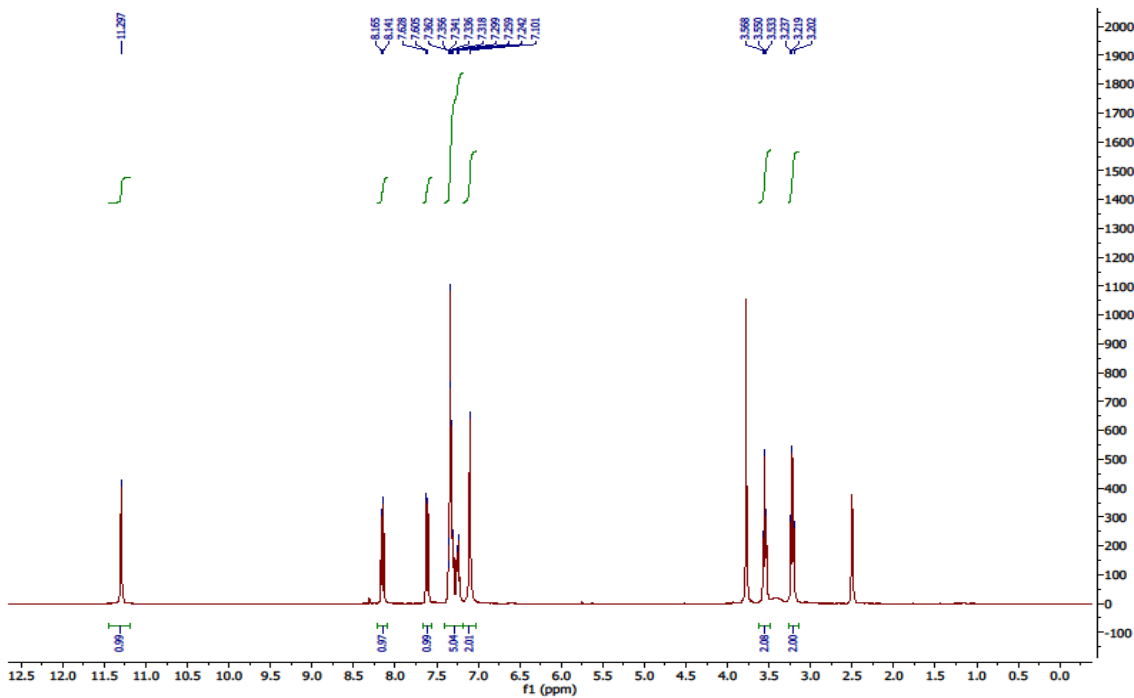


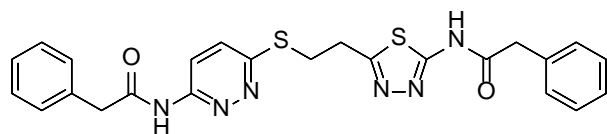
Compound **15b**



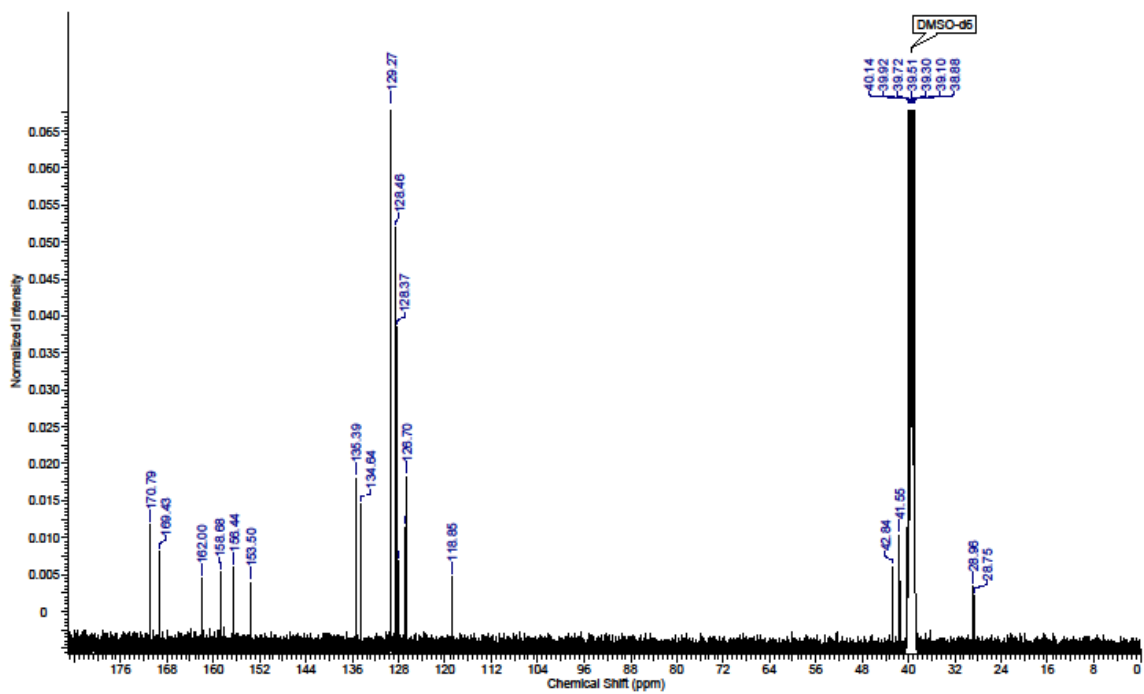
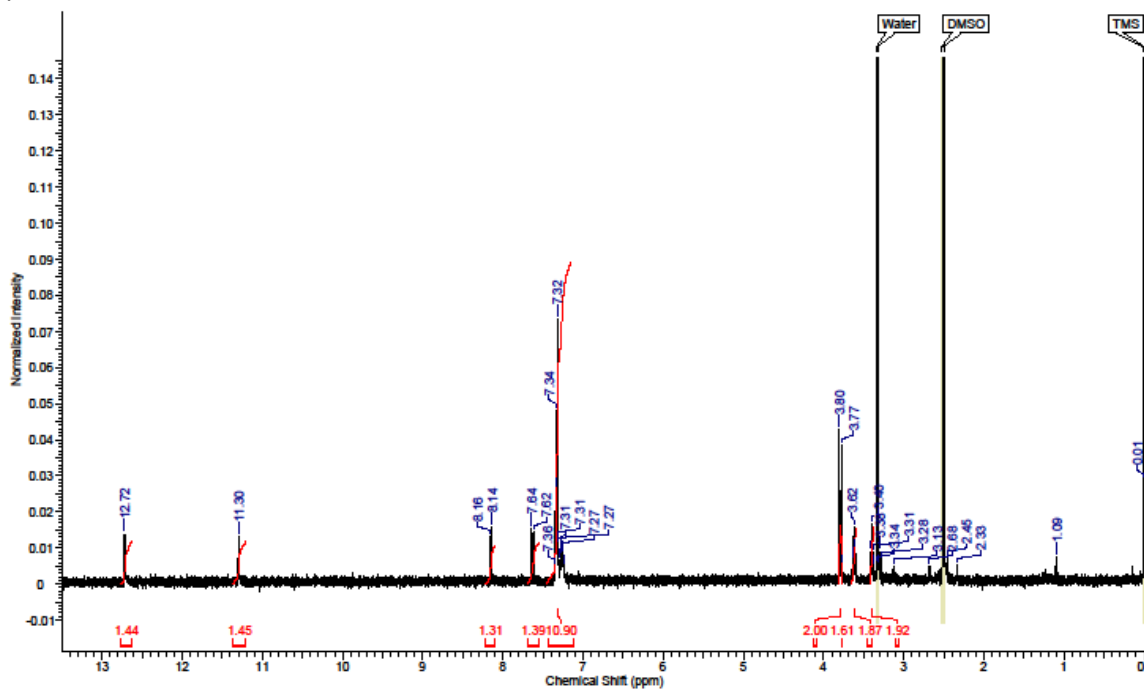


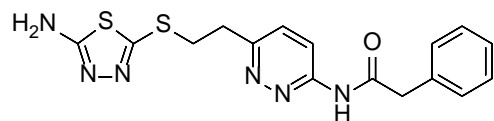
Compound 18



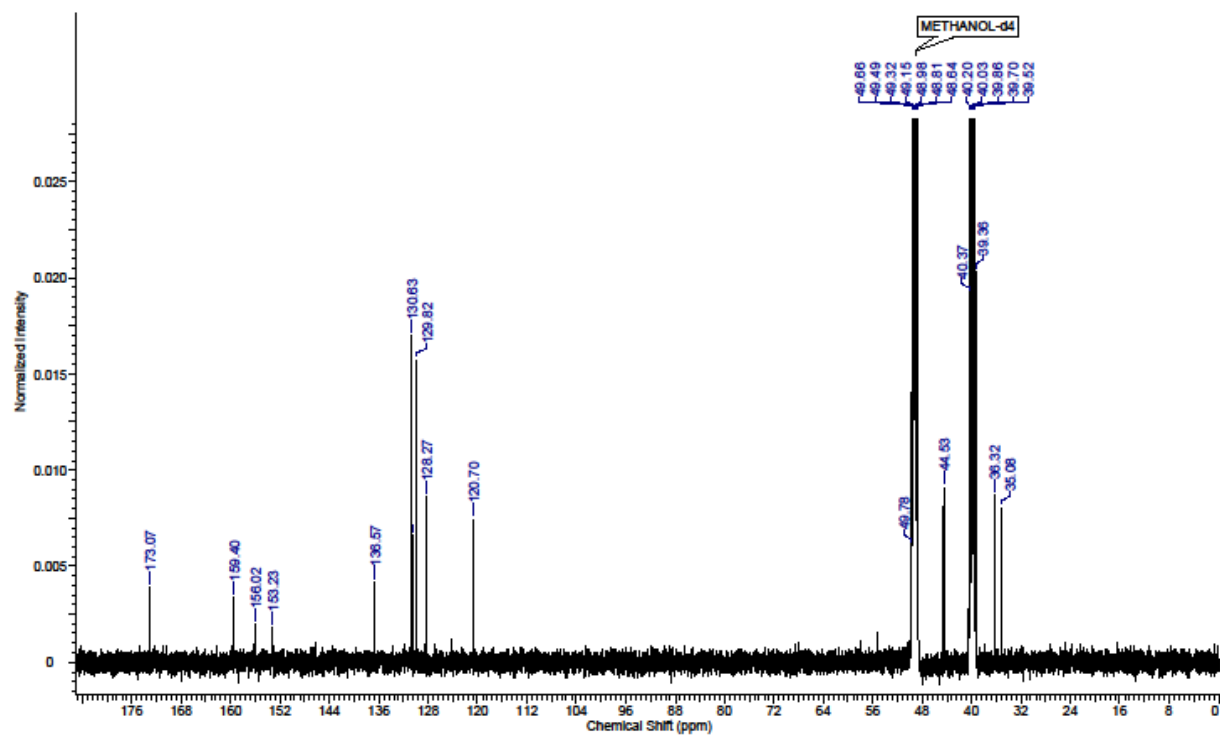
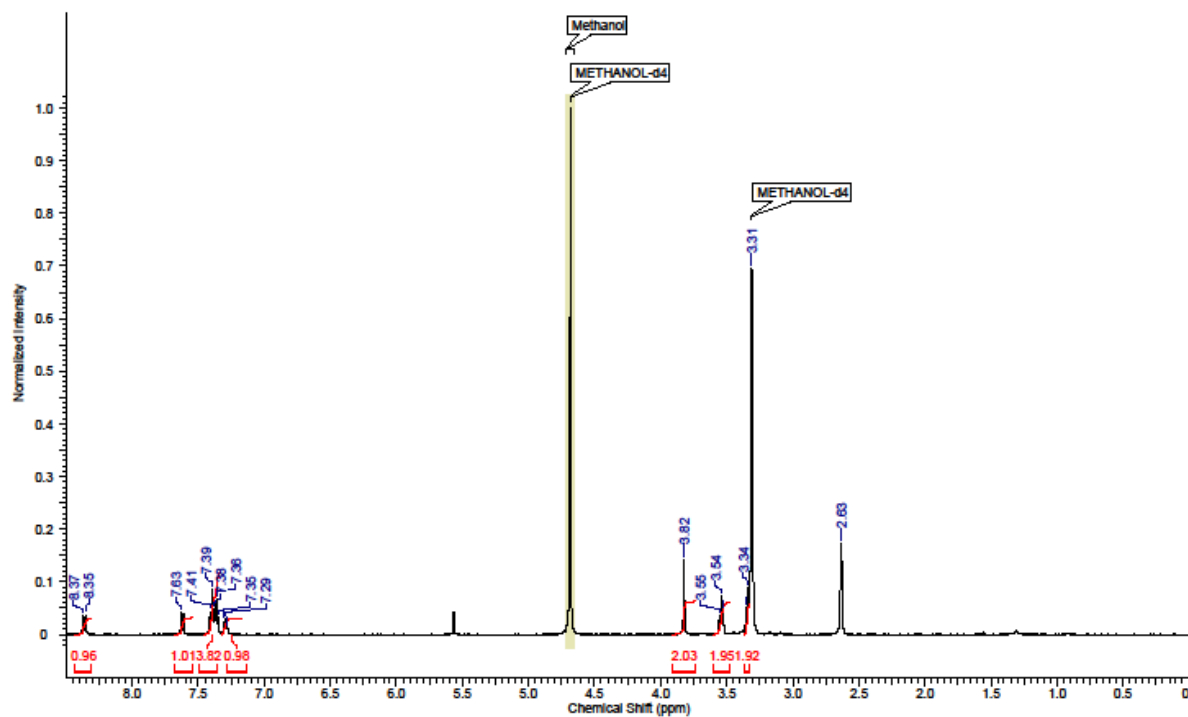


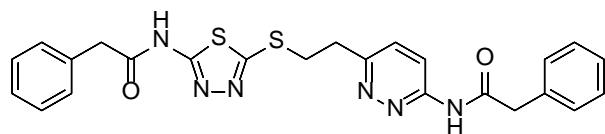
Compound 19



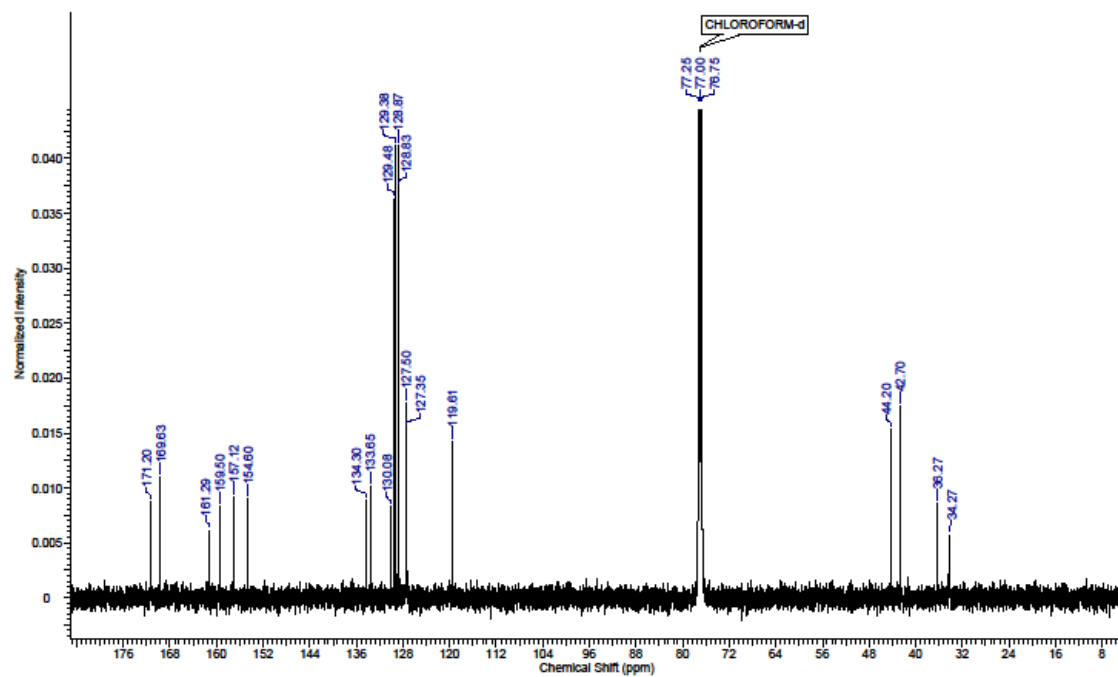
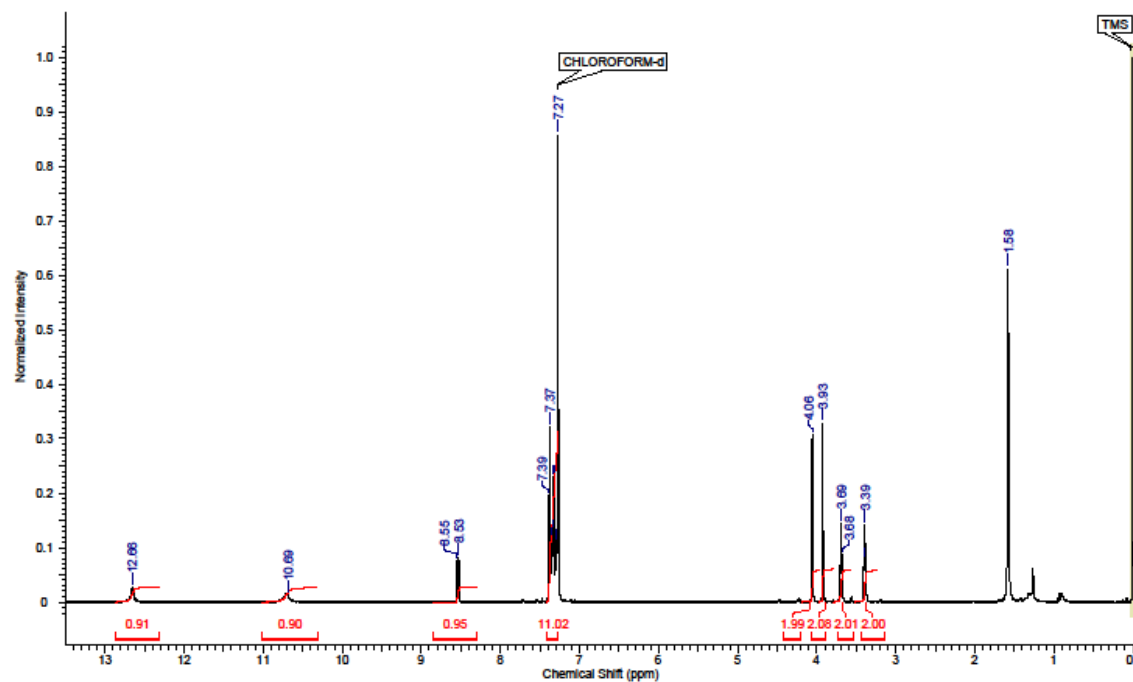


Compound 24





Compound 25



**Figure S1.** Dose-response curve obtained for compound **3a** tested at eight concentrations in GLS assay.

