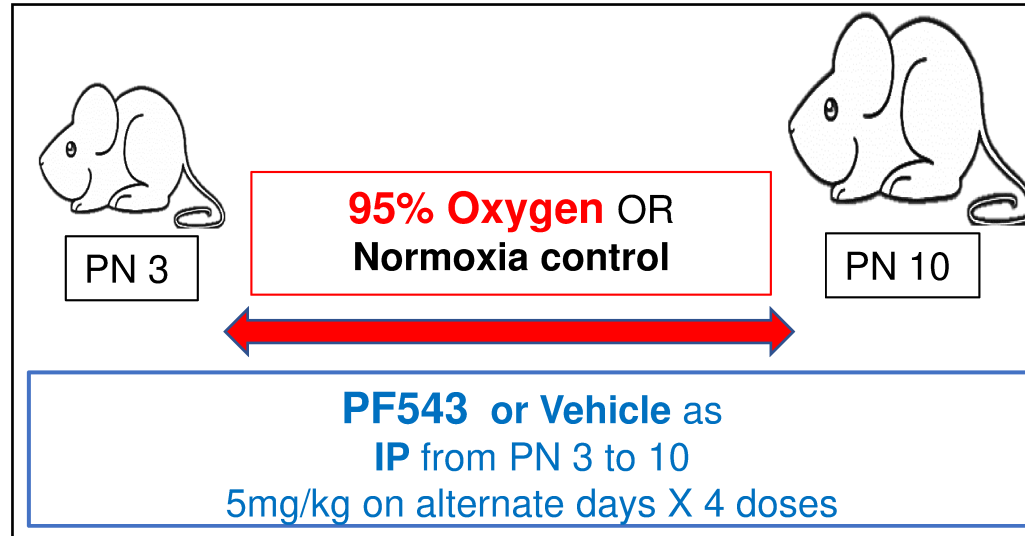


Supplementary Fig. 1

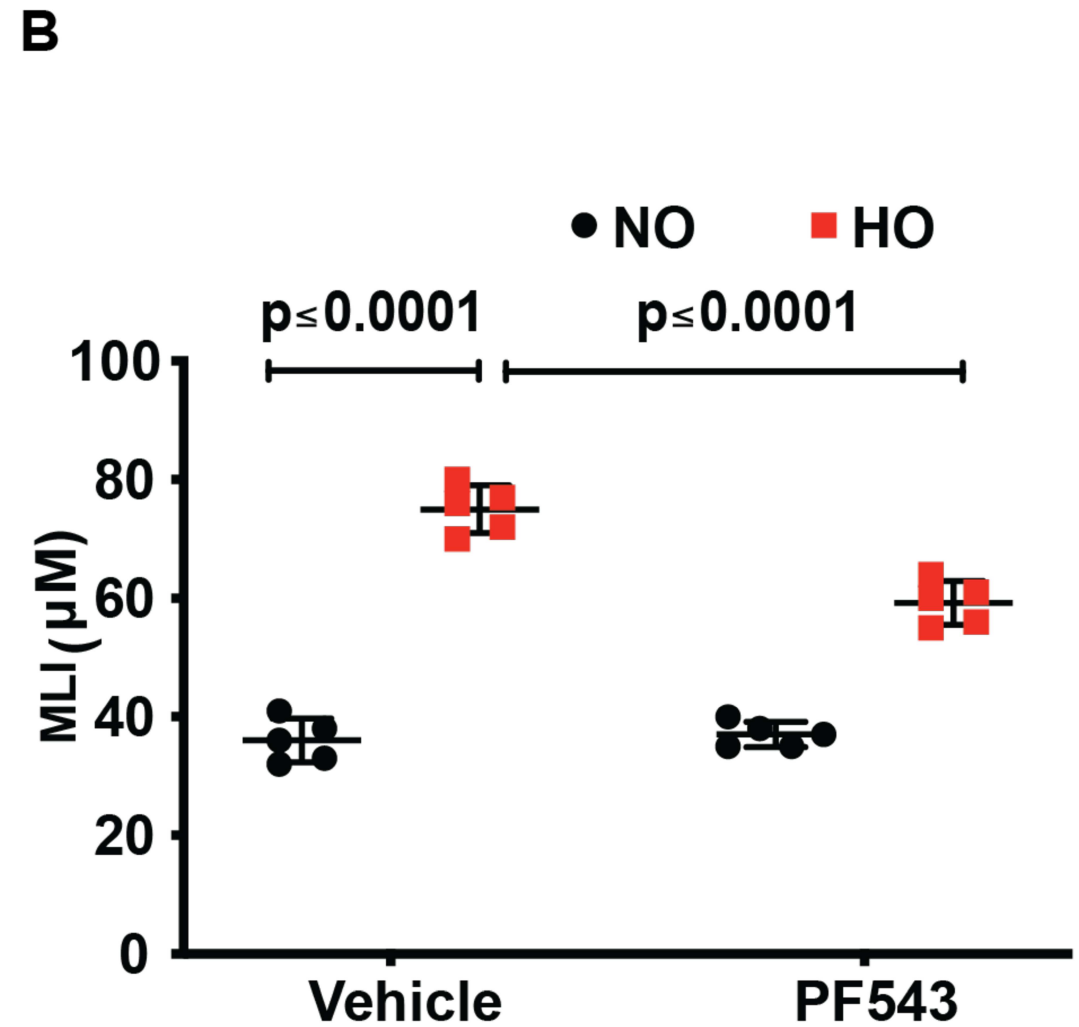
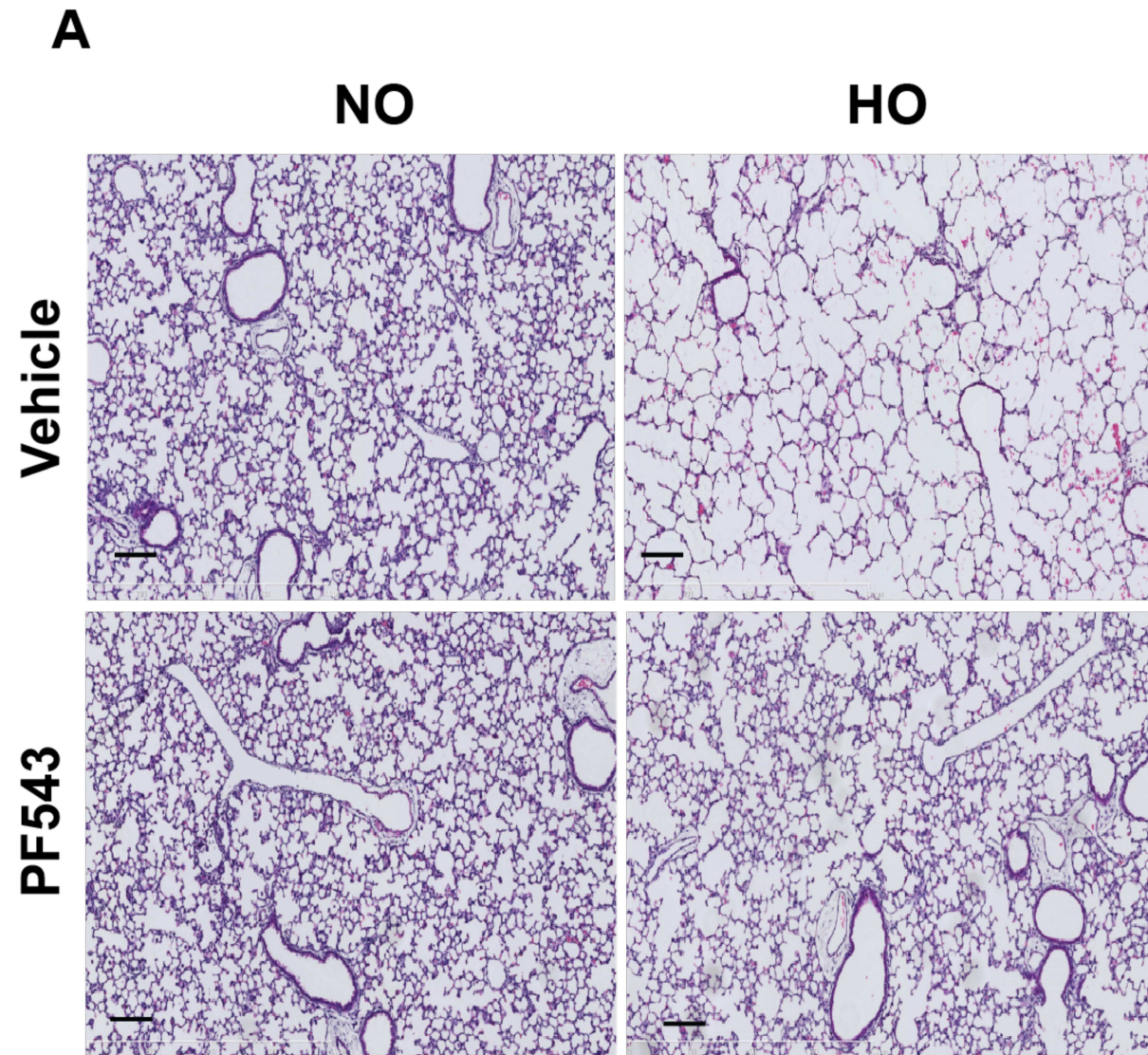


Table 1. MatInspector (Genomatix) Promoter Analyses for LOX

Transcript 1. Inspecting sequence GXP_123790(LOX/human) [GXP_123790] (1-704):

Family	Detailed Family Information	Matrix	Detailed Matrix Information	Position From	Position To	Anchor	Strand	Matrix Similarity		Additional Lines of Evidence	Sequence
V\$STAT	Signal transducer and activator of transcription	V\$STAT.01	Signal transducer and activator of transcription	100	118	109	(-)	0.966	4	LOX is cocited with V\$STAT (TF: STAT1, STAT3) part of model match of NFKB_STAT_02, STAT_GREF_01 Overlaps with Constrained Element Correlates with ChipSeq peak of V\$STAT (TF: STAT3)	gctttatgGGAAgcgccc
V\$STAT	Signal transducer and activator of transcription	V\$STAT3.02	Signal transducer and activator of transcription 3	643	661	652	(+)	0.968	2	LOX is cocited with V\$STAT (TF: STAT1, STAT3) Part of model match of NBRE_STAT_01	tgccTTCcaggactgagaa

Transcript 2. Inspecting sequence GXP_1500117(LOX/human) [GXP_1500117] (1-615):

Family	Detailed Family Information	Matrix	Detailed Matrix Information	Position From	Position To	Anchor	Strand	Matrix Similarity		Additional Lines of Evidence	Sequence
V\$STAT	Signal transducer and activator of transcription	V\$STAT5A.0	Signal transducer and activator of transcription 5A	269	287	278	(-)	0.871	2	LOX is cocited with V\$STAT (TF: STAT1, STAT3) Overlaps with constrained element	ctgtTTCcagcagtaaac

Transcript 3. Inspecting sequence GXP_1500118(LOX/human) [GXP_1500118] (1-713):

Family	Detailed Family Information	Matrix	Detailed Matrix Information	Position From	Position To	Anchor	Strand	Matrix Similarity		Additional Lines of Evidence	Sequence
V\$STAT	Signal transducer and activator of transcription	V\$STAT3.02	Signal transducer and activator of transcription 3	499	517	508	(-)	0.950	1	LOX is cocited with V\$STAT (TF: STAT1, STAT3)	tggaTTCcagggtgccac

Supplementary Table 1. Patient data of lung samples used for Immunohistochemistry

	Sex	Race	Birth Weight (grams)	GA at birth (weeks)	Corrected GA at death	Length of NICU stay (days)
BPD						
1	F	White	540	24.7	31.8	50
2	F	White	575	29.1	46.5	122
3	F	White	520	29.2	43.1	87
4	M	White	965	28	45	119
5	M	White	490	25.4	34	60
6	F	AA	860	27.2	32.1	41
7	M	AA	770	26.5	34.2	53
8	M	H	920	28	36.1	57
Control						
1	M	White	1705	32.3	32.7	3
2	F	White	2835	40	40.6	4
3	F	White	2580	36	36.1	1
4	M	AA	3120	38.2	38.6	4
5	M	AA	2975	41.1	42	6

Supplementary Table 2. LOX Western Blot Patient Data

	Sex	Race	Birthweight (grams)	GA at birth	Collected GA at Tracheal Collection	Length of NICU stay (days)
BPD						
1	F	AA	550	24.2	39.2	105
2	F	AA	720	24.5	38.1	94
3	M	AA	960	28.2	39.5	75
Control						
1	M	AA	2370	39.3	39.3	1
2	M	H	2570	37	37.1	2
3	F	H	3100	38	38	1

Supplementary Table 3. MatInspector (Genomatix) Promoter Analyses for LOX

Transcript 1. Inspecting sequence GXP_123790(LOX/human) [GXP_123790] (1-704):

Family	Detailed Family Information	Matrix	Detailed Matrix Information	Position From	Position To	Anchor	Strand	Matrix Similarity		Additional Lines of Evidence	Sequence
V\$STAT	Signal transducer and activator of transcription	V\$STAT.01	Signal transducer and activator of transcription	100	118	109	(-)	0.966	4	LOX is cocited with V\$STAT (TF: STAT1, STAT3) part of model match of NFKB_STAT_02, STAT_GREF_01 Overlaps with Constrained Element Correlates with ChipSeq peak of V\$STAT (TF: STAT3)	gctttatgGGAAgcgccc
V\$STAT	Signal transducer and activator of transcription	V\$STAT3.02	Signal transducer and activator of transcription 3	643	661	652	(+)	0.968	2	LOX is cocited with V\$STAT (TF: STAT1, STAT3) Part of model match of NBRE_STAT_01	tgccTTCCaggactgagaa

Transcript 2. Inspecting sequence GXP_1500117(LOX/human) [GXP_1500117] (1-615):

Family	Detailed Family Information	Matrix	Detailed Matrix Information	Position From	Position To	Anchor	Strand	Matrix Similarity		Additional Lines of Evidence	Sequence
V\$STAT	Signal transducer and activator of transcription	V\$STAT5A.0	Signal transducer and activator of transcription 5A	269	287	278	(-)	0.871	2	LOX is cocited with V\$STAT (TF: STAT1, STAT3) Overlaps with constrained element	ctgtTTCCcaggagtaaac

Transcript 3. Inspecting sequence GXP_1500118(LOX/human) [GXP_1500118] (1-713):

Family	Detailed Family Information	Matrix	Detailed Matrix Information	Position From	Position To	Anchor	Strand	Matrix Similarity		Additional Lines of Evidence	Sequence
V\$STAT	Signal transducer and activator of transcription	V\$STAT3.02	Signal transducer and activator of transcription 3	499	517	508	(-)	0.950	1	LOX is cocited with V\$STAT (TF: STAT1, STAT3)	tggaTTCCagggctgccac