

Supplementary Figure 1. Flowchart

- Initial health check-up was conducted between January 2005 and March 2016
- Available data of CVH metrics at baseline
- Negative proteinuria at baseline
(n=1,005,141)

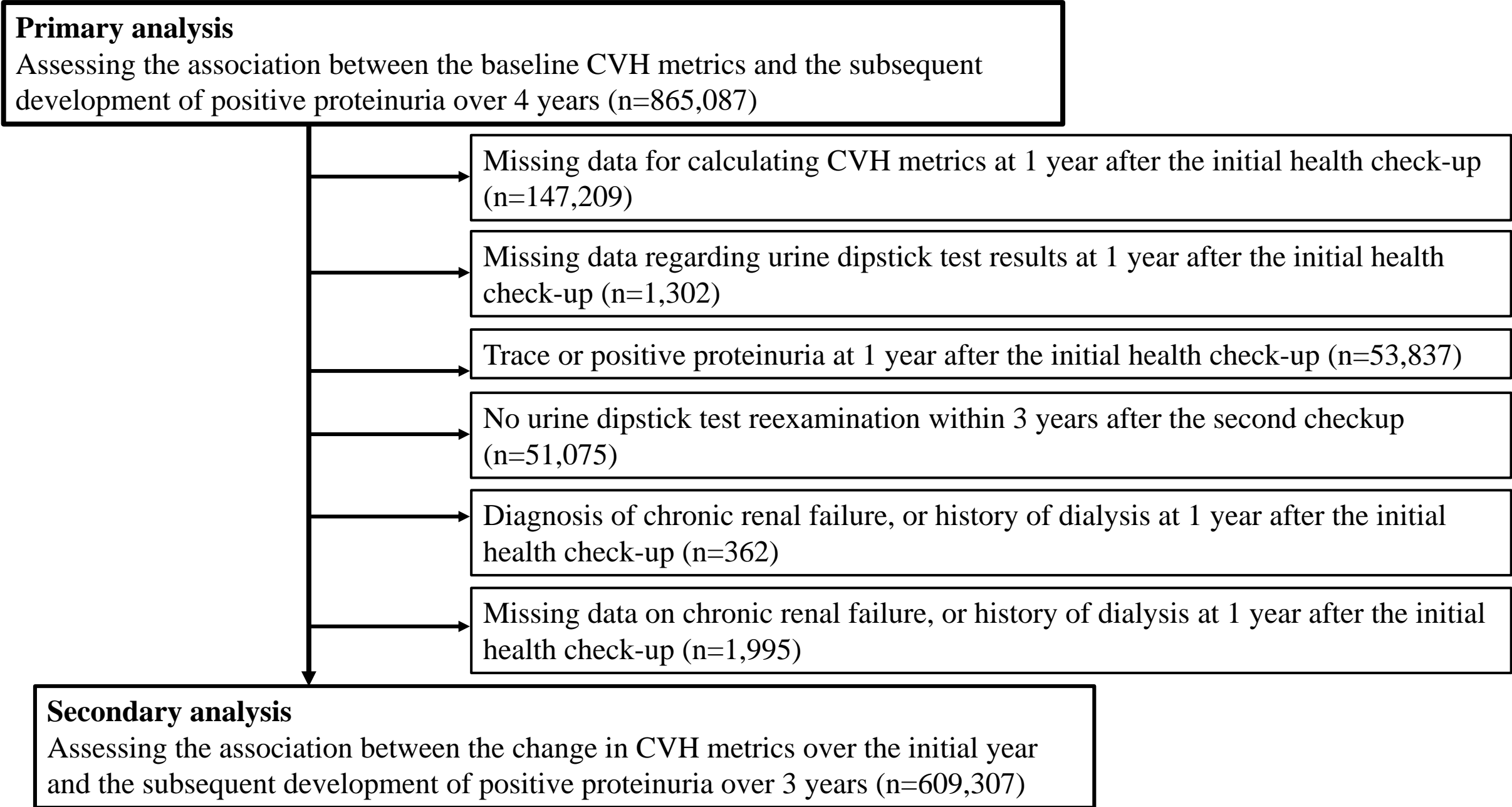
No urine dips stick test reexamination within 4 years after the initial checkup
(n=106,655)

Diagnosis of chronic renal failure, or history of dialysis (n=1,122)

Missing data on chronic renal failure, or history of dialysis (n=32,277)

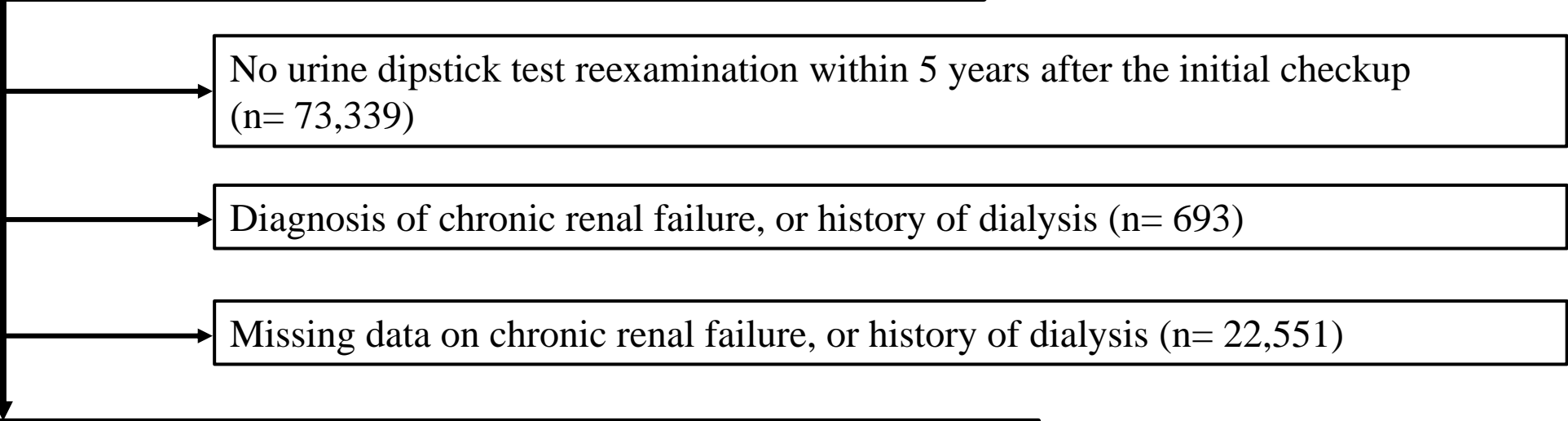
Primary analysis
Assessing the association between the baseline CVH metrics and the subsequent development of positive proteinuria over 4 years (n=865,087)

Supplementary Figure 2. Flowchart (Secondary analysis)



Supplementary Figure 3A. Flowchart (Sensitivity analysis)

- Initial health check-up was conducted between January 2005 and March 2015
- Available data of CVH metrics at baseline
- Negative proteinuria at baseline
(n=684,004)



No urine dipstick test reexamination within 5 years after the initial checkup
(n= 73,339)

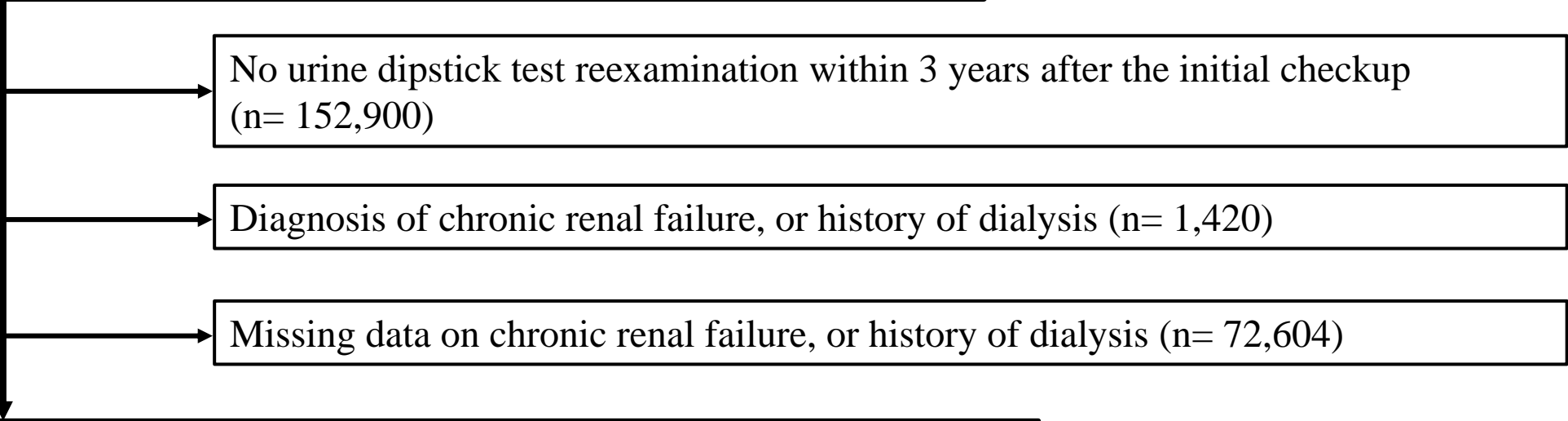
Diagnosis of chronic renal failure, or history of dialysis (n= 693)

Missing data on chronic renal failure, or history of dialysis (n= 22,551)

Sensitivity analysis
Assessing the association between the baseline CVH metrics and the subsequent development of positive proteinuria over 5 years (n=587,421)

Supplementary Figure 3B. Flowchart (Sensitivity analysis)

- Initial health check-up was conducted between January 2005 and March 2017
- Available data of CVH metrics at baseline
- Negative proteinuria at baseline
(n=1,326,241)



No urine dipstick test reexamination within 3 years after the initial checkup
(n= 152,900)

Diagnosis of chronic renal failure, or history of dialysis (n= 1,420)

Missing data on chronic renal failure, or history of dialysis (n= 72,604)

Sensitivity analysis
Assessing the association between the baseline CVH metrics and the subsequent development of positive proteinuria over 3 years (n=1,099,317)

Supplementary Figure 4. Variable importance ranking

