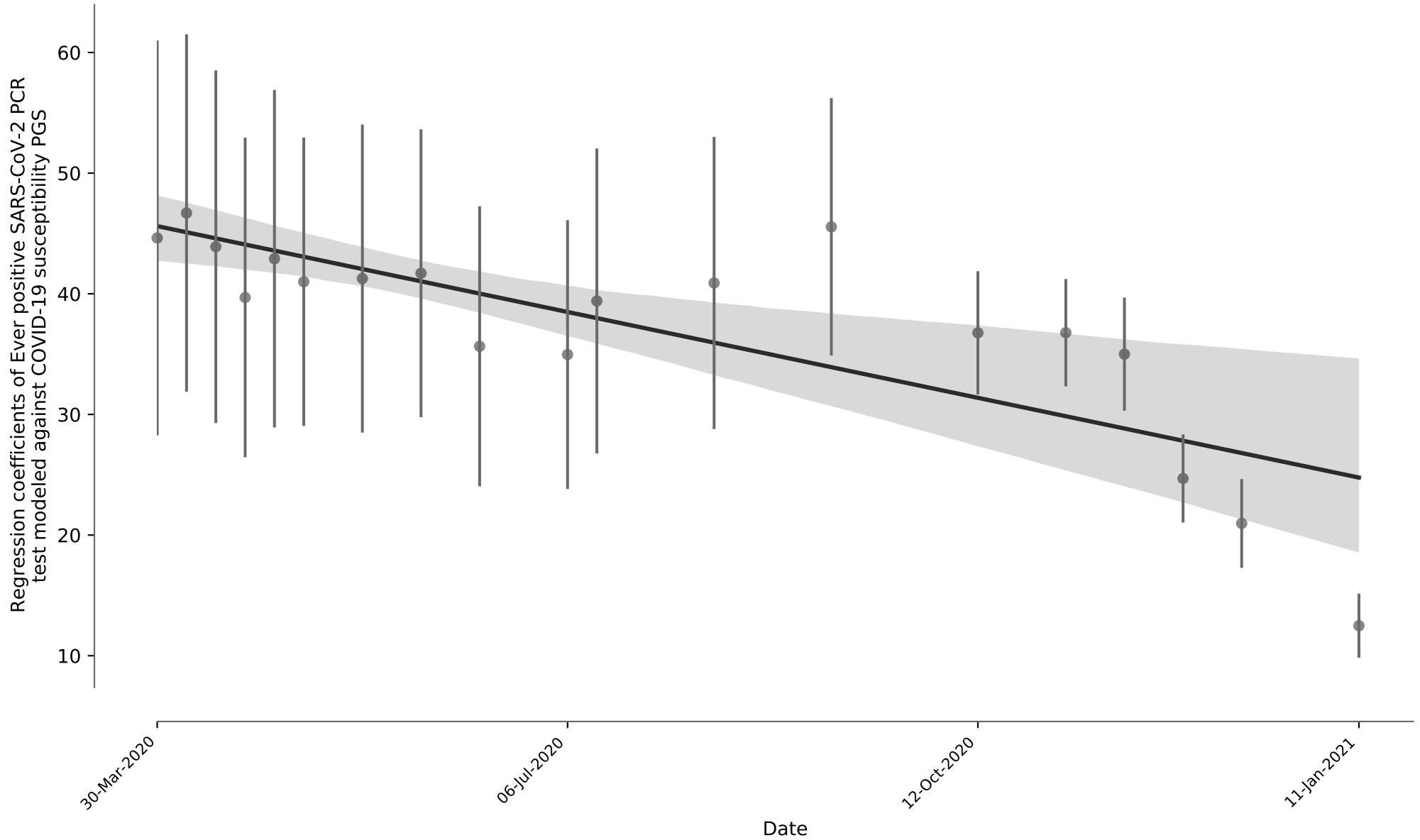
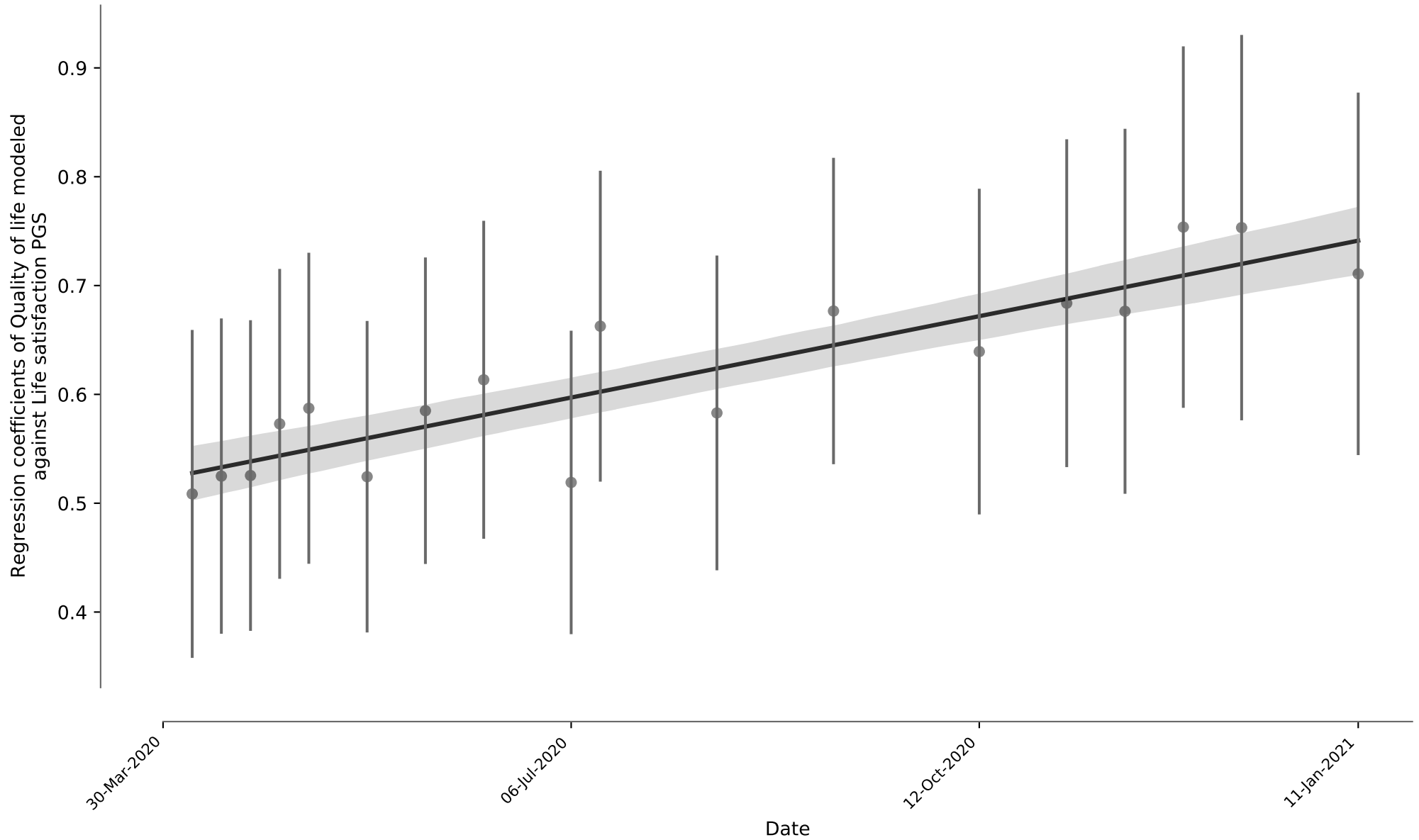


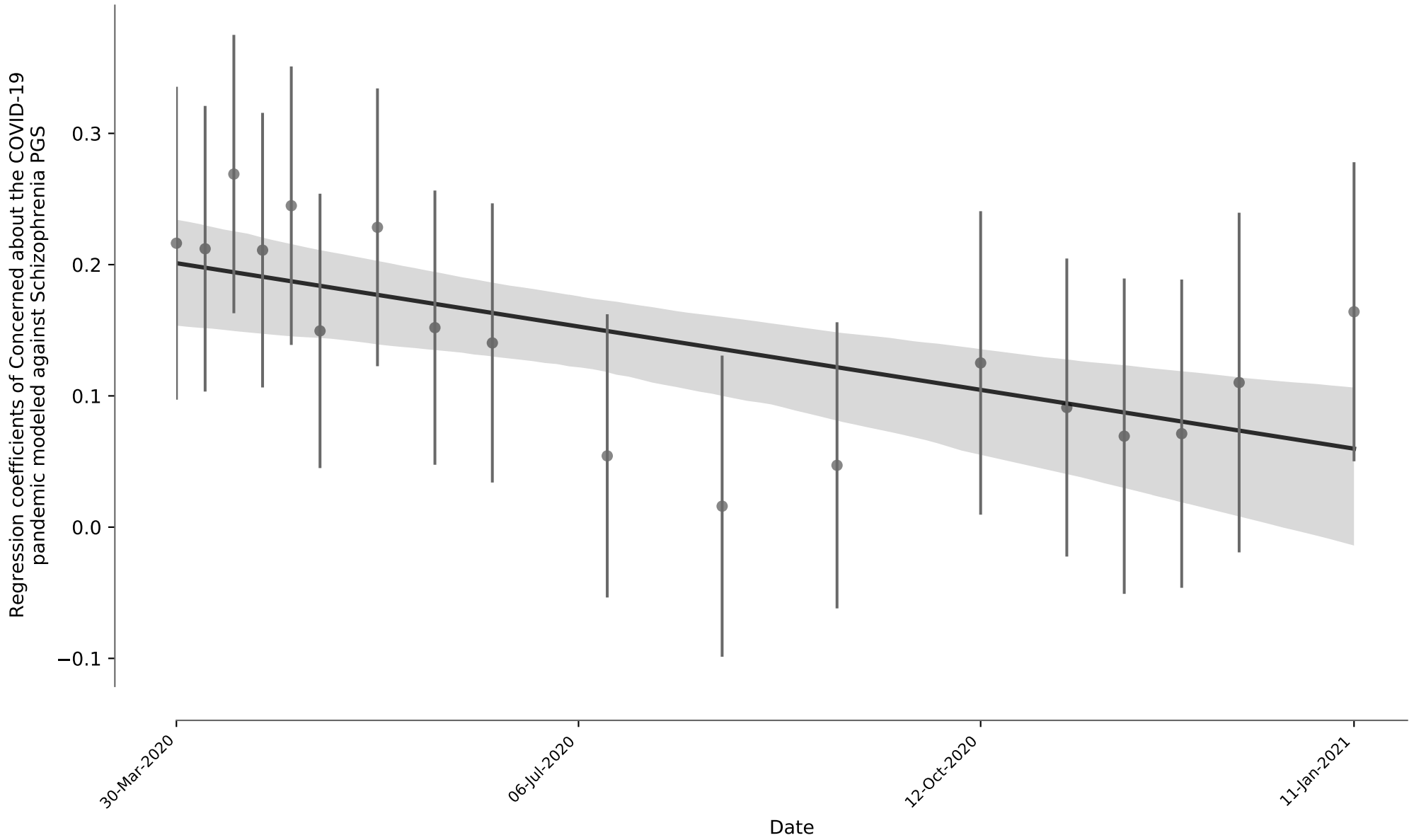
Ever positive SARS-CoV-2 PCR test  
COVID-19 susceptibility  
 $R^2: 0.62$ ,  $p\text{-value}: 5.86 \times 10^{-05}$



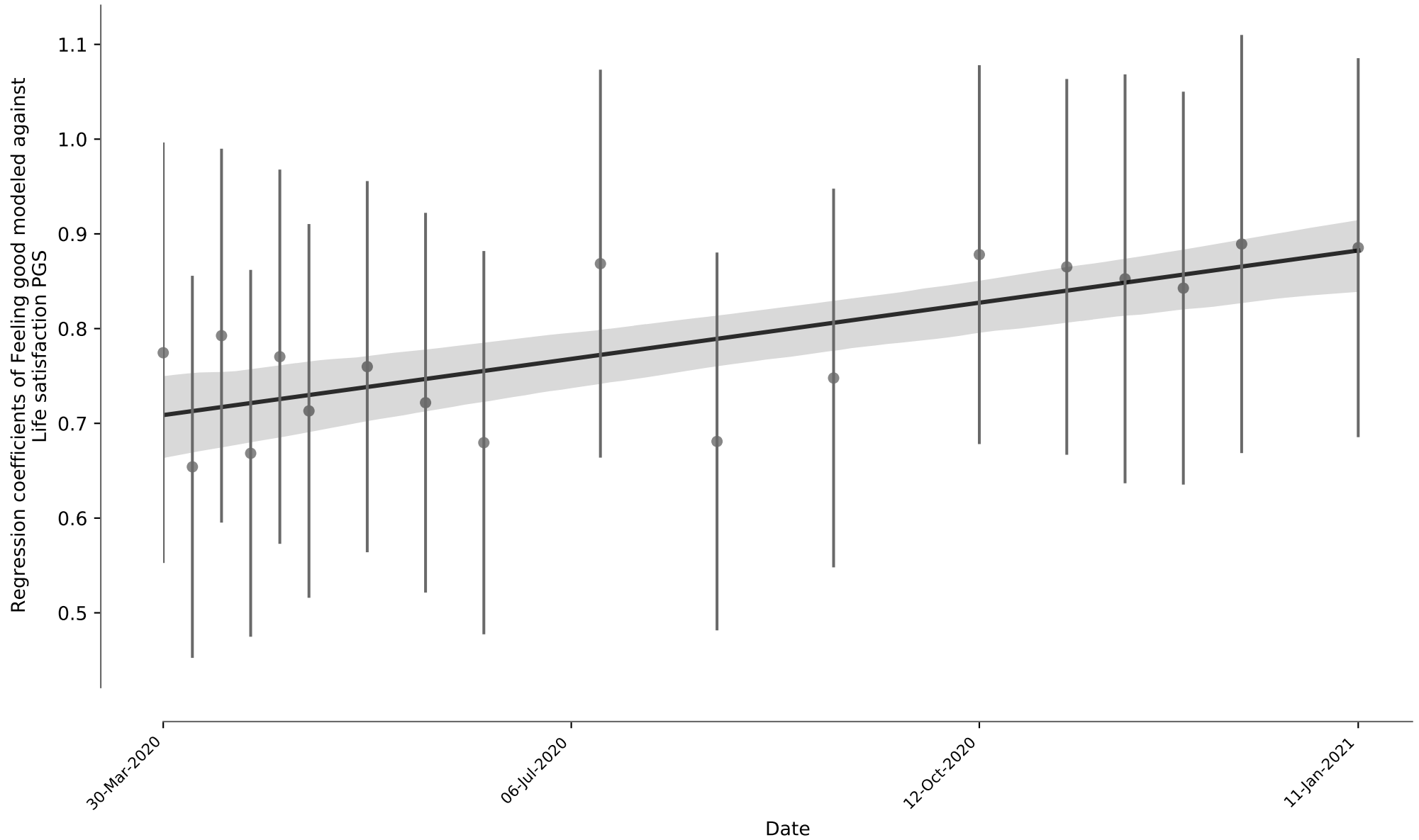
Quality of life  
Life satisfaction  
 $R^2: 0.79, p\text{-value}: 7.85 \times 10^{-07}$



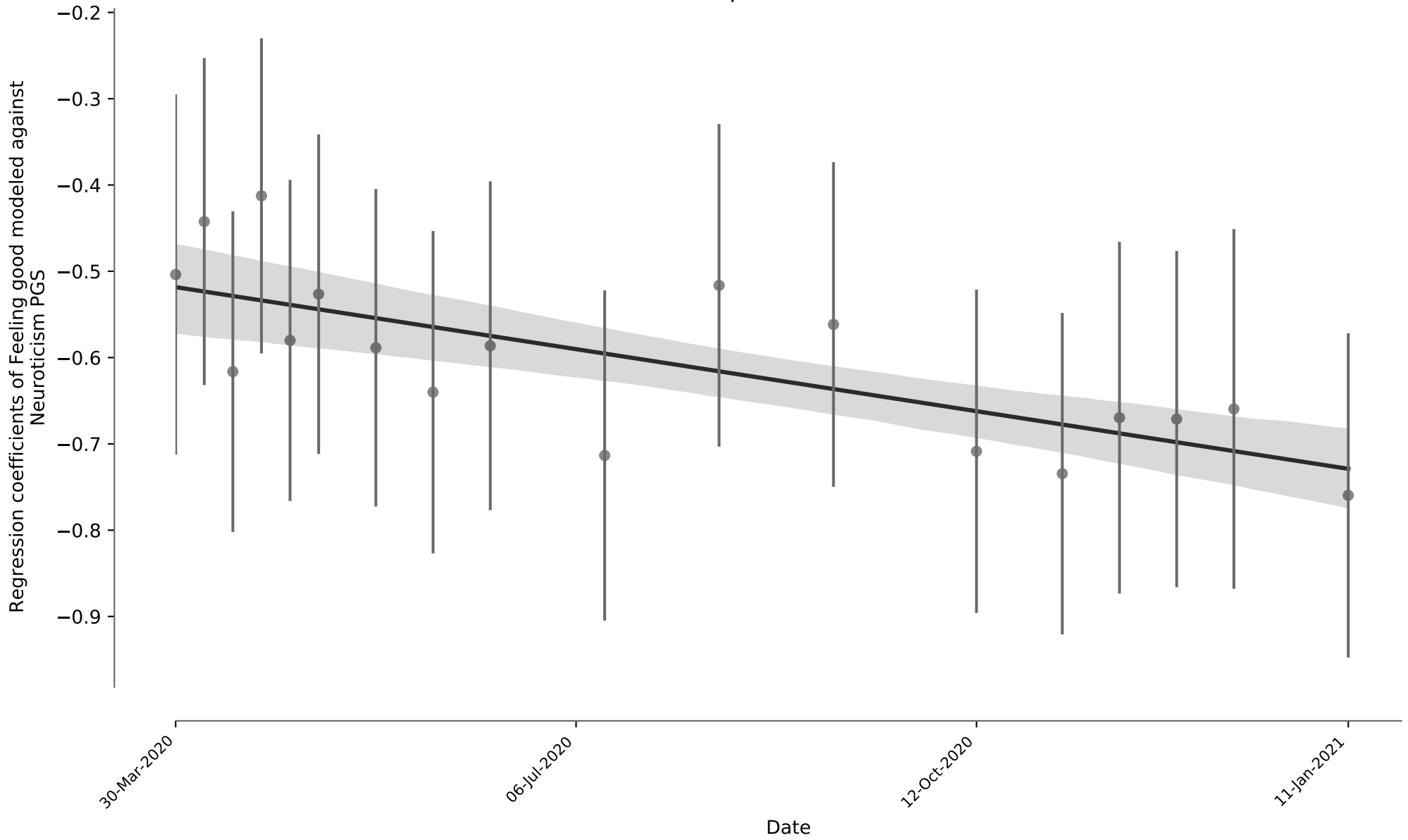
Concerned about the COVID-19 pandemic  
Schizophrenia  
 $R^2: 0.42, p\text{-value}: 3.81 \times 10^{-03}$



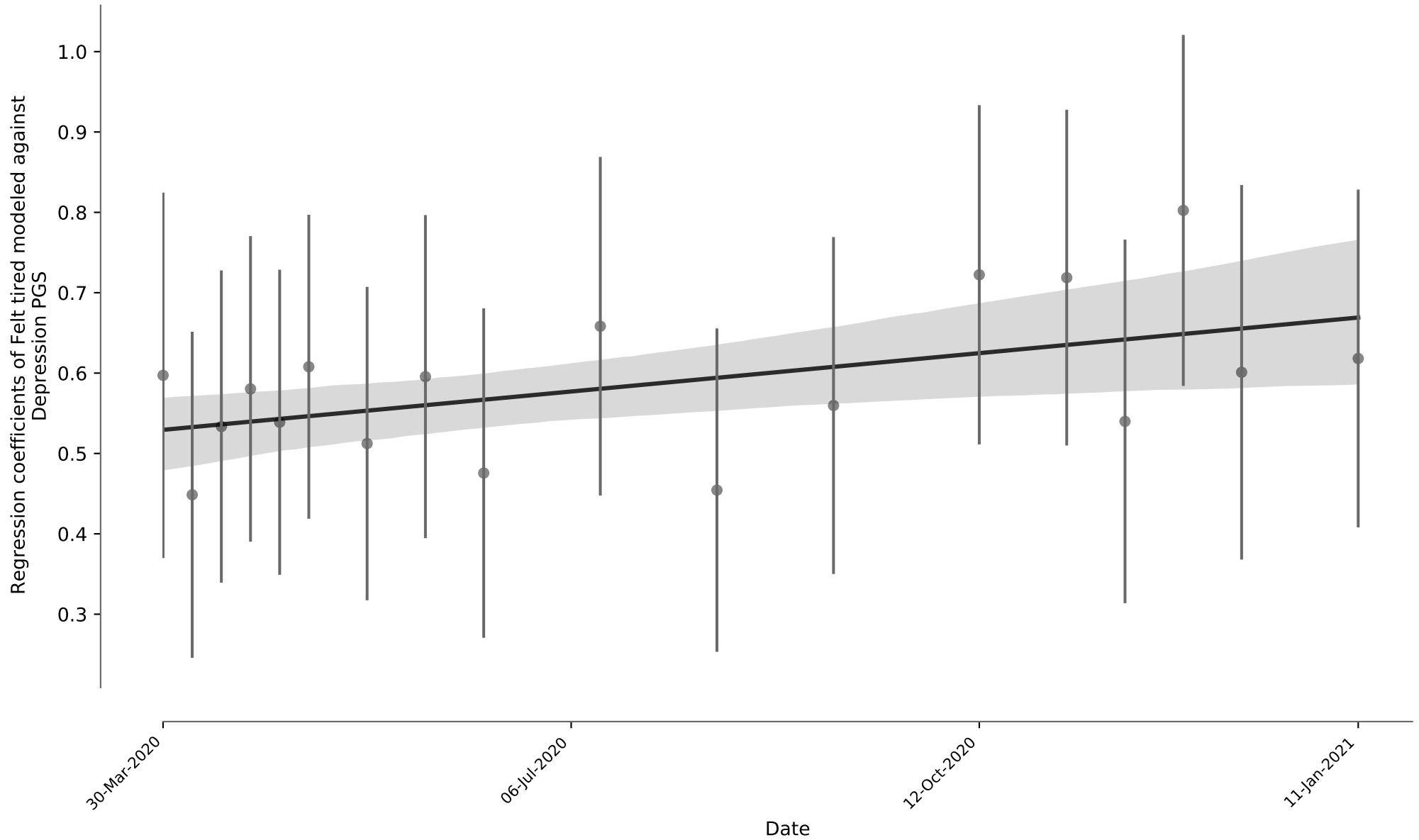
Feeling good  
Life satisfaction  
 $R^2: 0.53, p\text{-value}: 6.01 \times 10^{-04}$



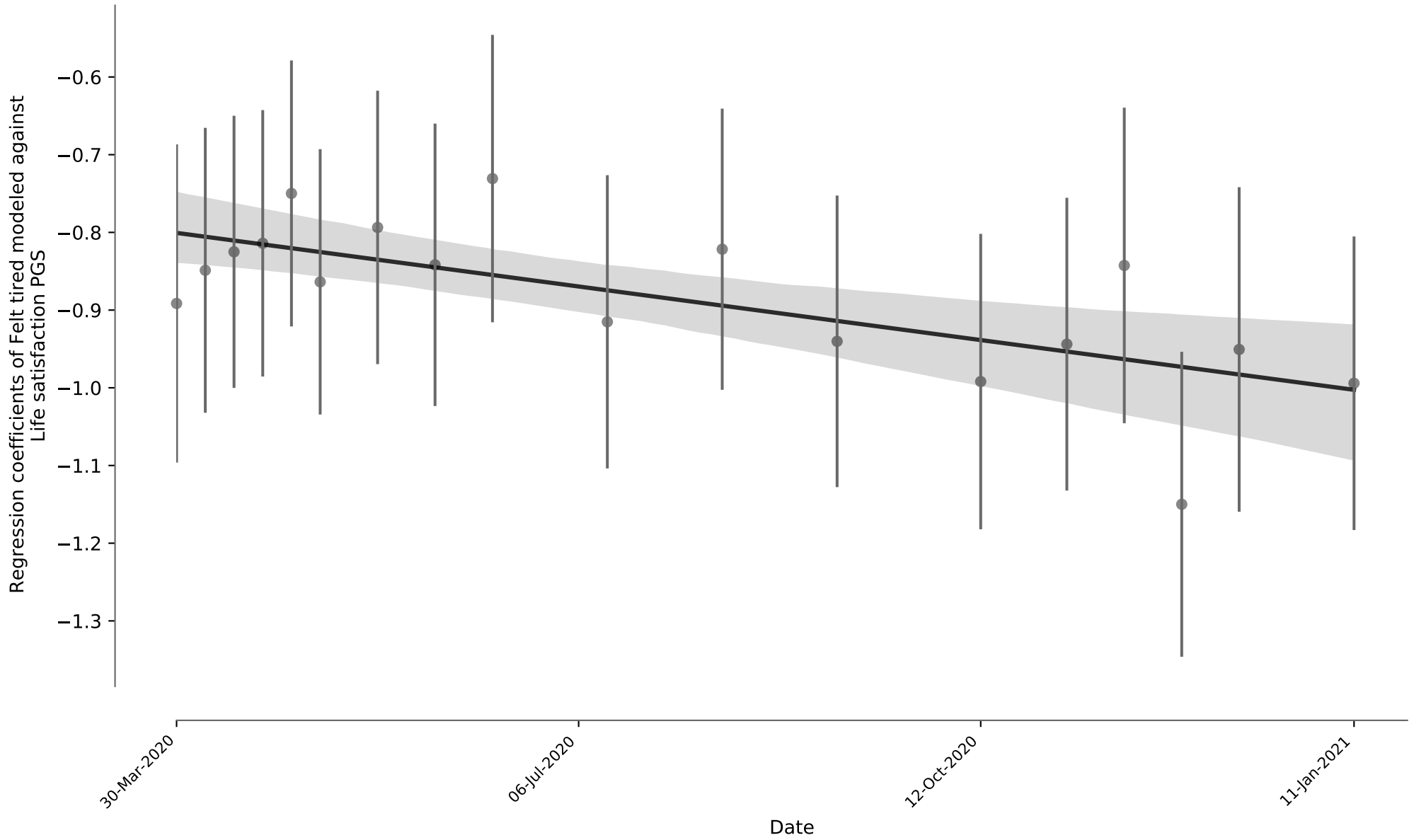
Feeling good  
Neuroticism  
 $R^2: 0.54, p\text{-value}: 5.49 \times 10^{-04}$



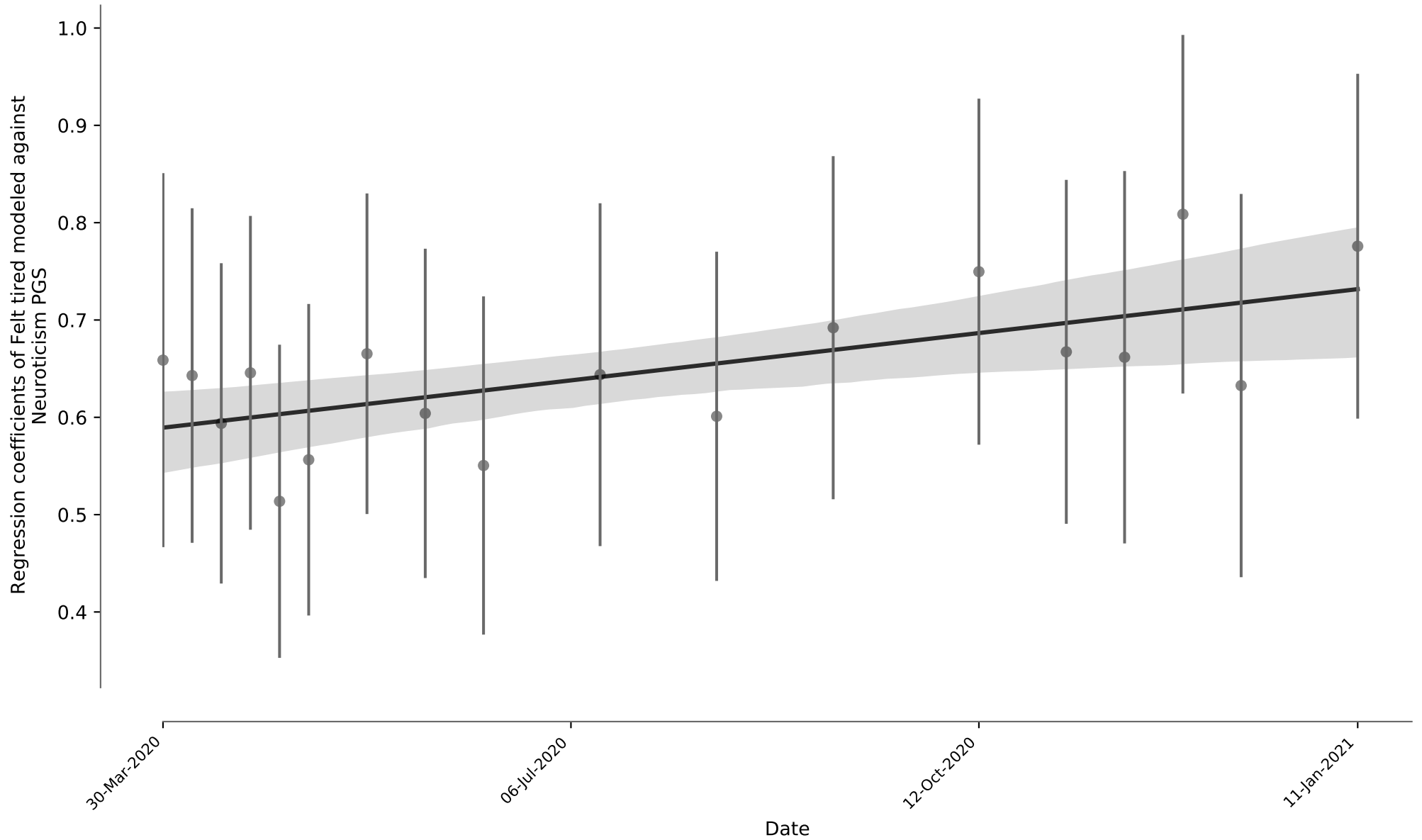
Felt tired  
Depression  
 $R^2: 0.26, p\text{-value: } 3.07 \times 10^{-02}$



Felt tired  
Life satisfaction  
 $R^2: 0.47, p\text{-value}: 1.58 \times 10^{-03}$

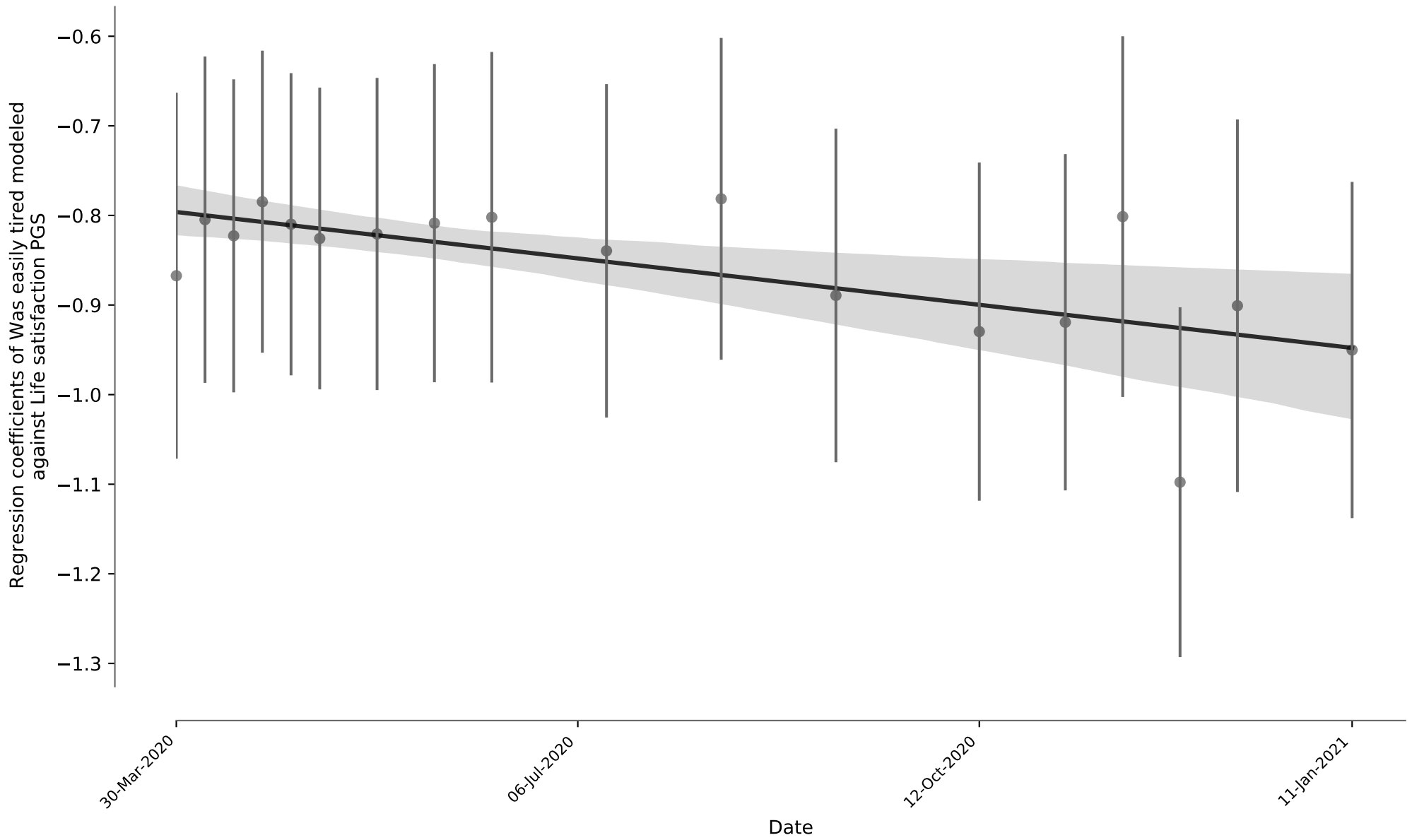


Felt tired  
Neuroticism  
 $R^2: 0.41, p\text{-value: } 3.92 \times 10^{-03}$

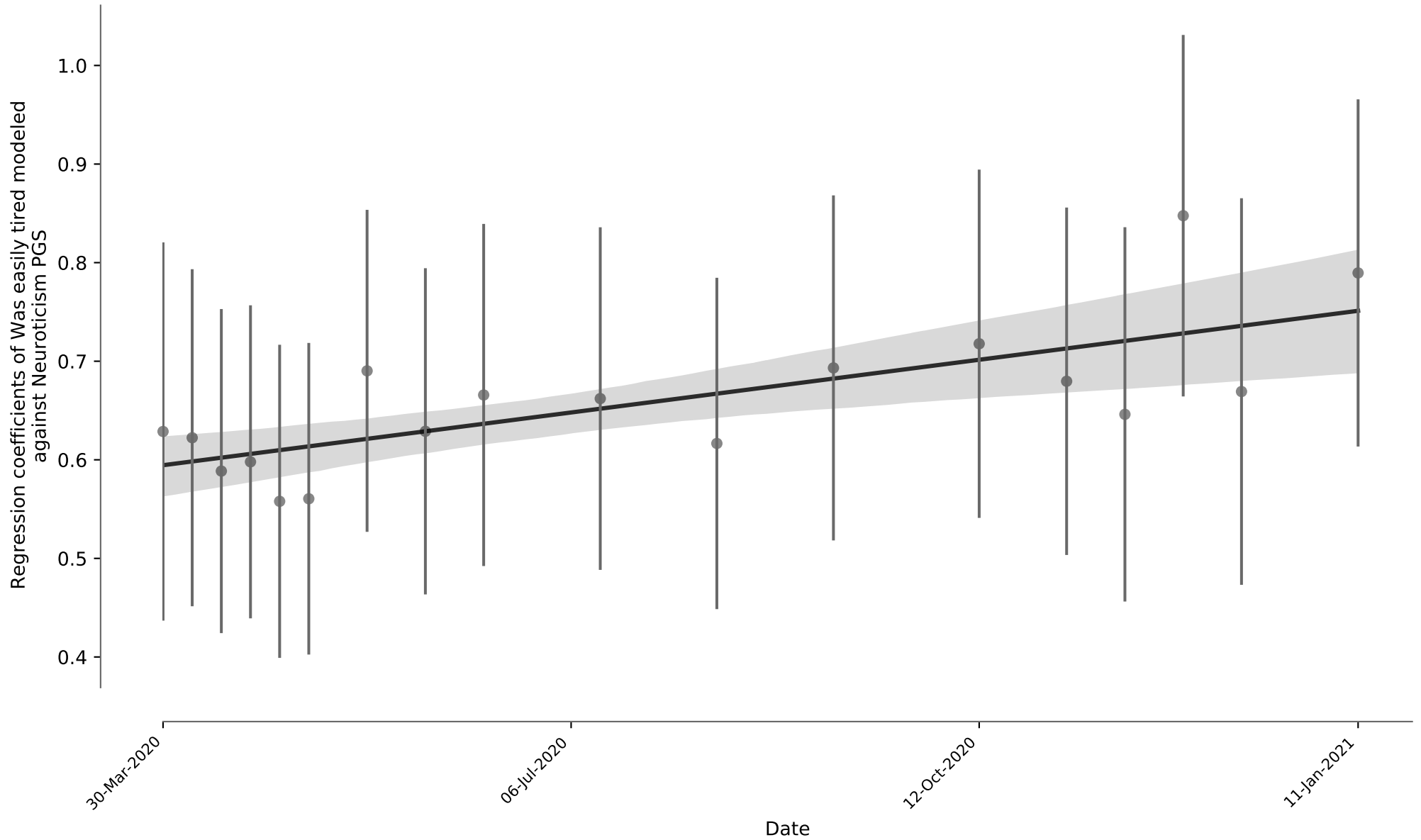




Was easily tired  
Life satisfaction  
 $R^2: 0.43, p\text{-value}: 2.92 \times 10^{-03}$



Was easily tired  
Neuroticism  
 $R^2: 0.54$ ,  $p\text{-value: } 5.57 \times 10^{-04}$



Felt physically exhausted  
Life satisfaction  
 $R^2: 0.36, p\text{-value}: 8.40 \times 10^{-03}$

