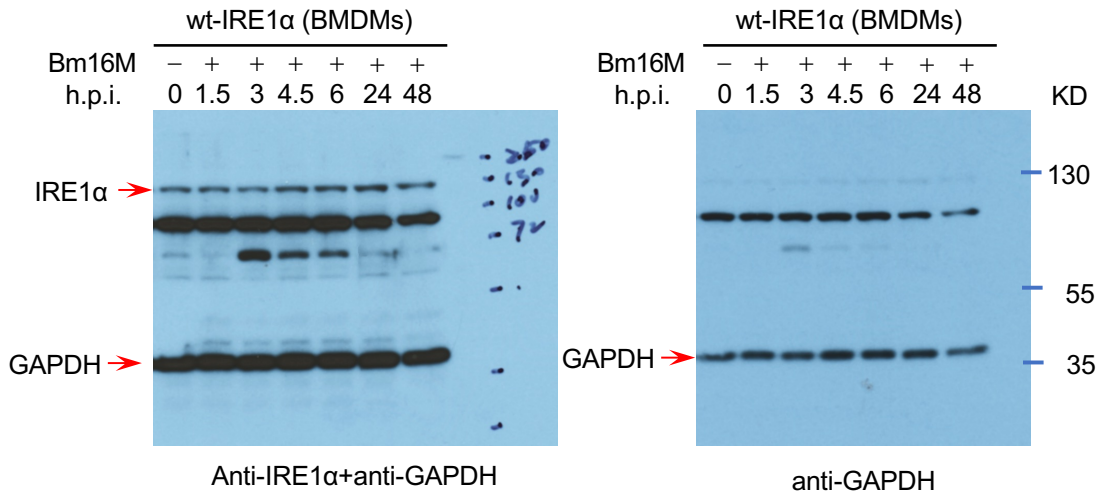
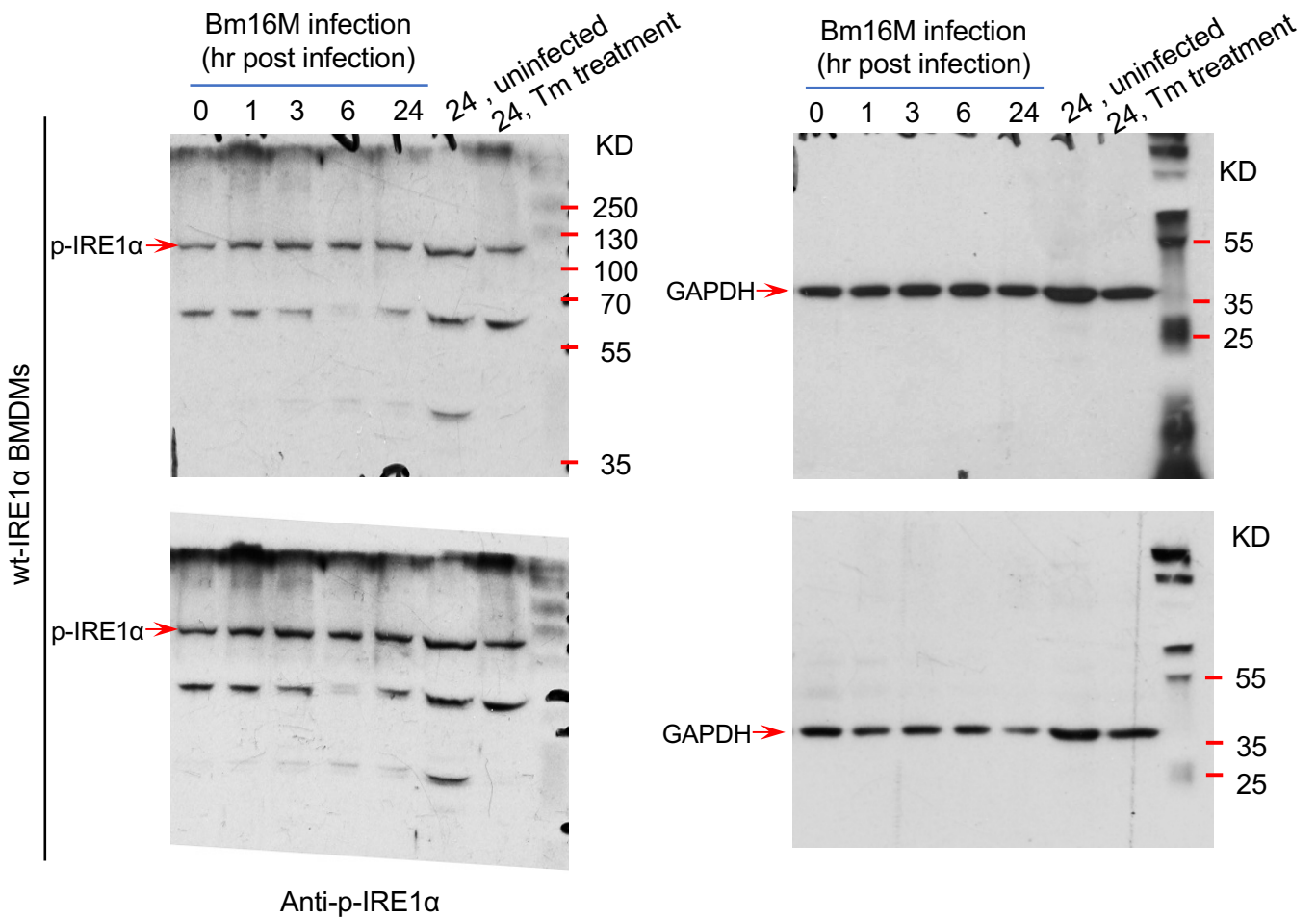


Fig. 1Q and S

Q

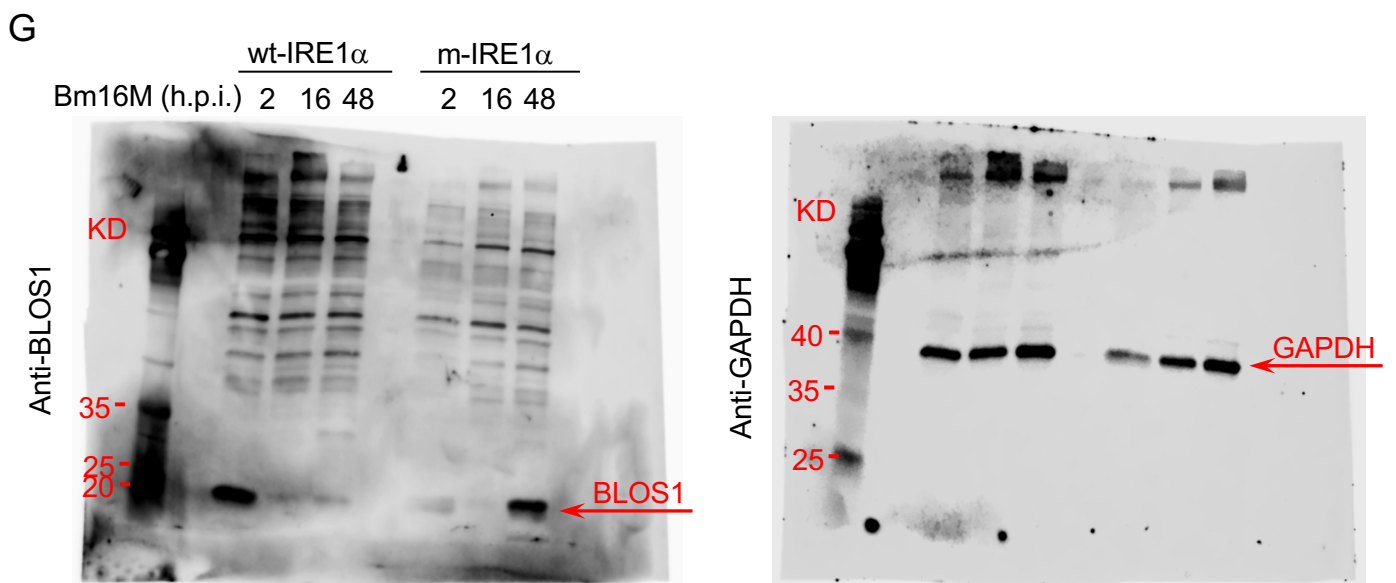
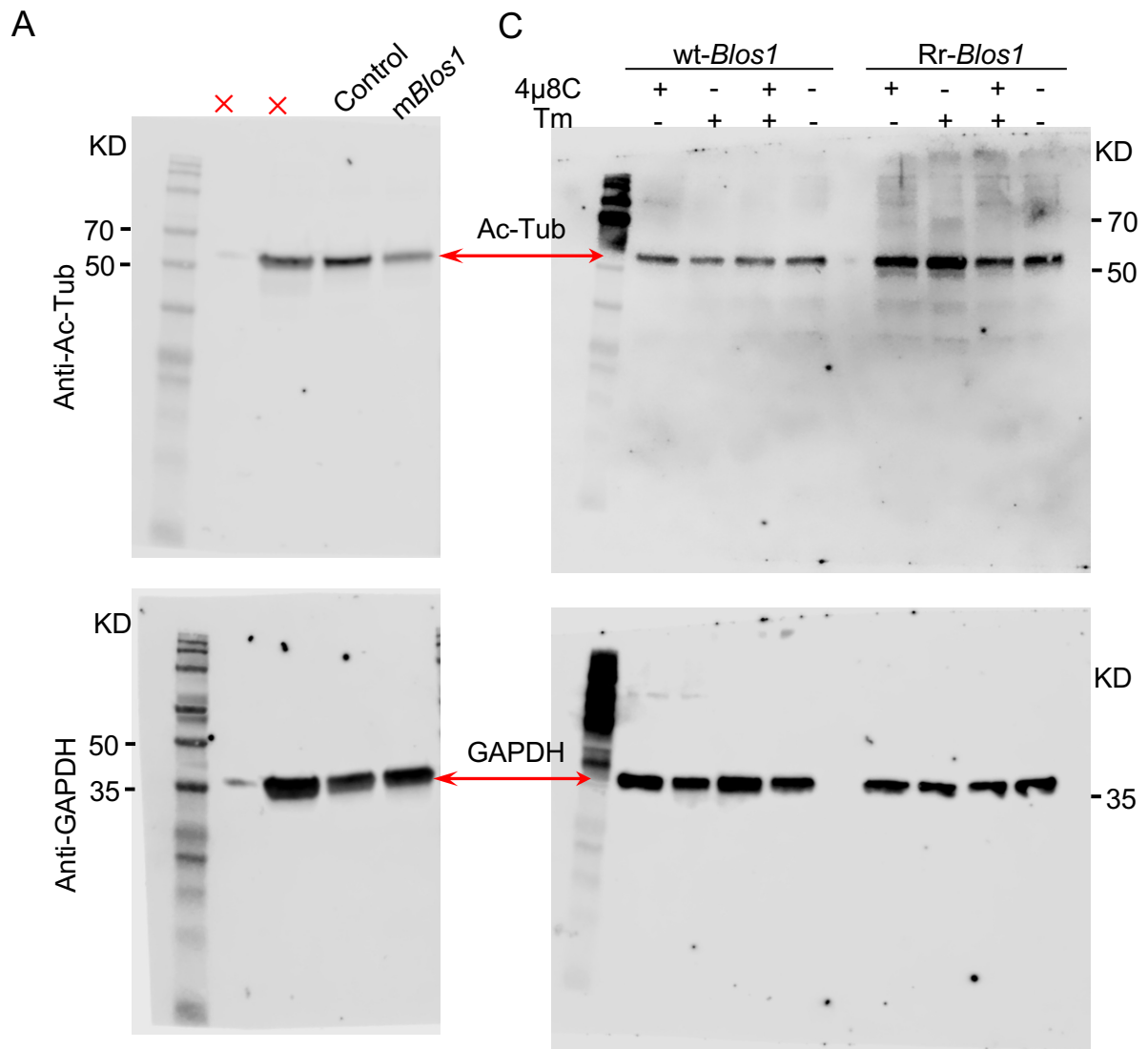


S



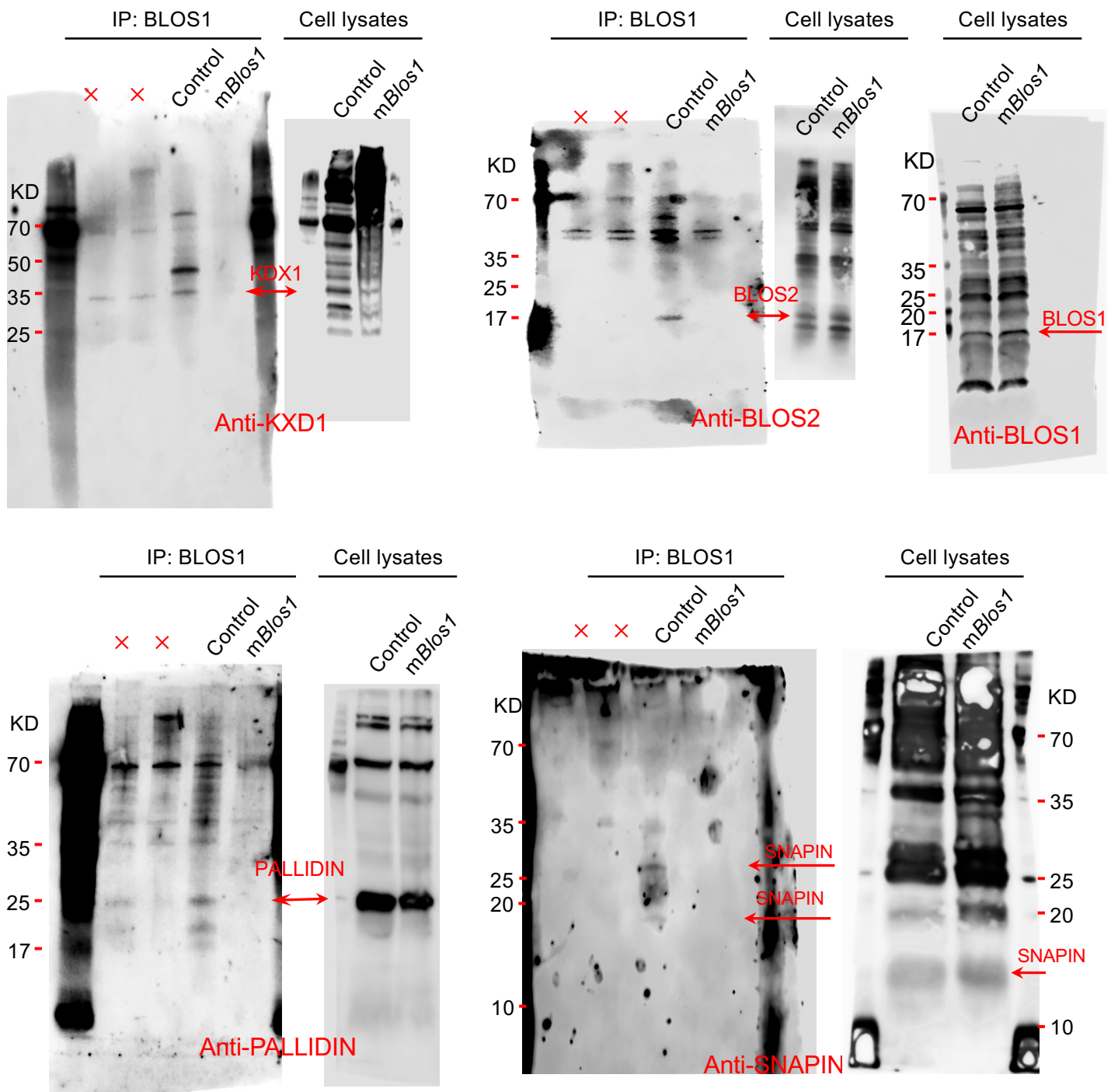
Target proteins are indicated by red arrows

Fig. 4A, C and G



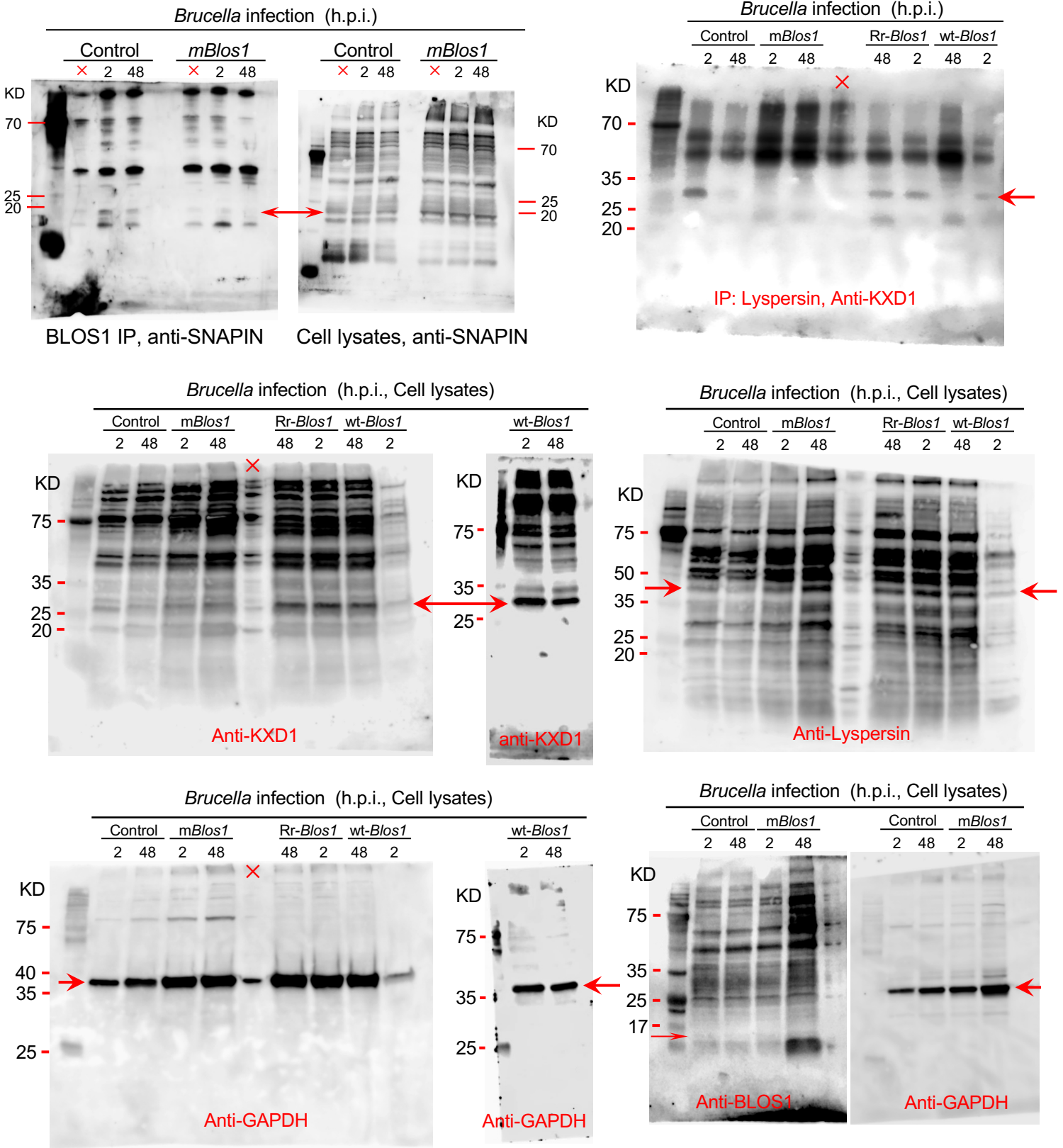
Target proteins are indicated by red arrows

Fig. 7A



Target proteins are indicated by red arrows. SNAPIN antibody (Proteintech, Cat #: 10055-1-AP) can recognize the 15-18 KD (monomer) and 30-36 KD (dimer) forms of SNAPIN.

Fig. 7C, G



Target proteins are indicated by red arrows

Figure 1—figure supplement 1B

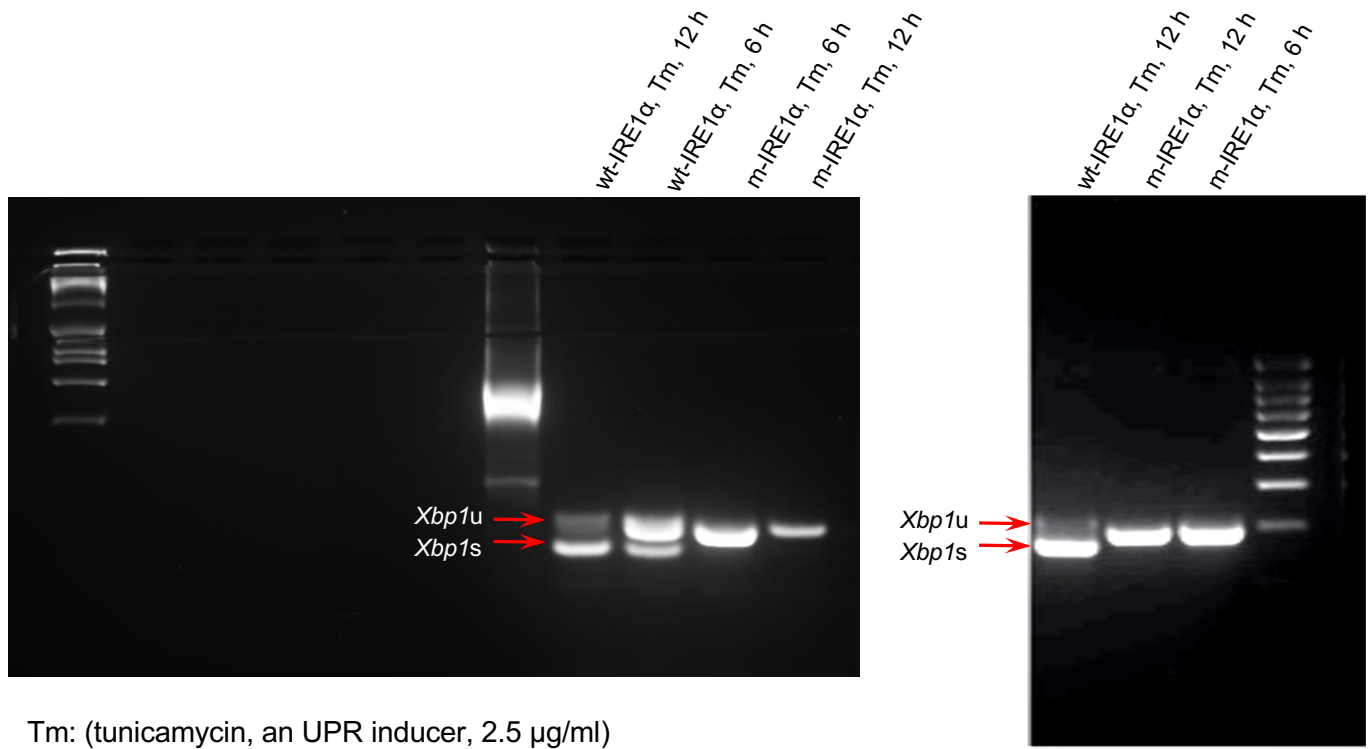
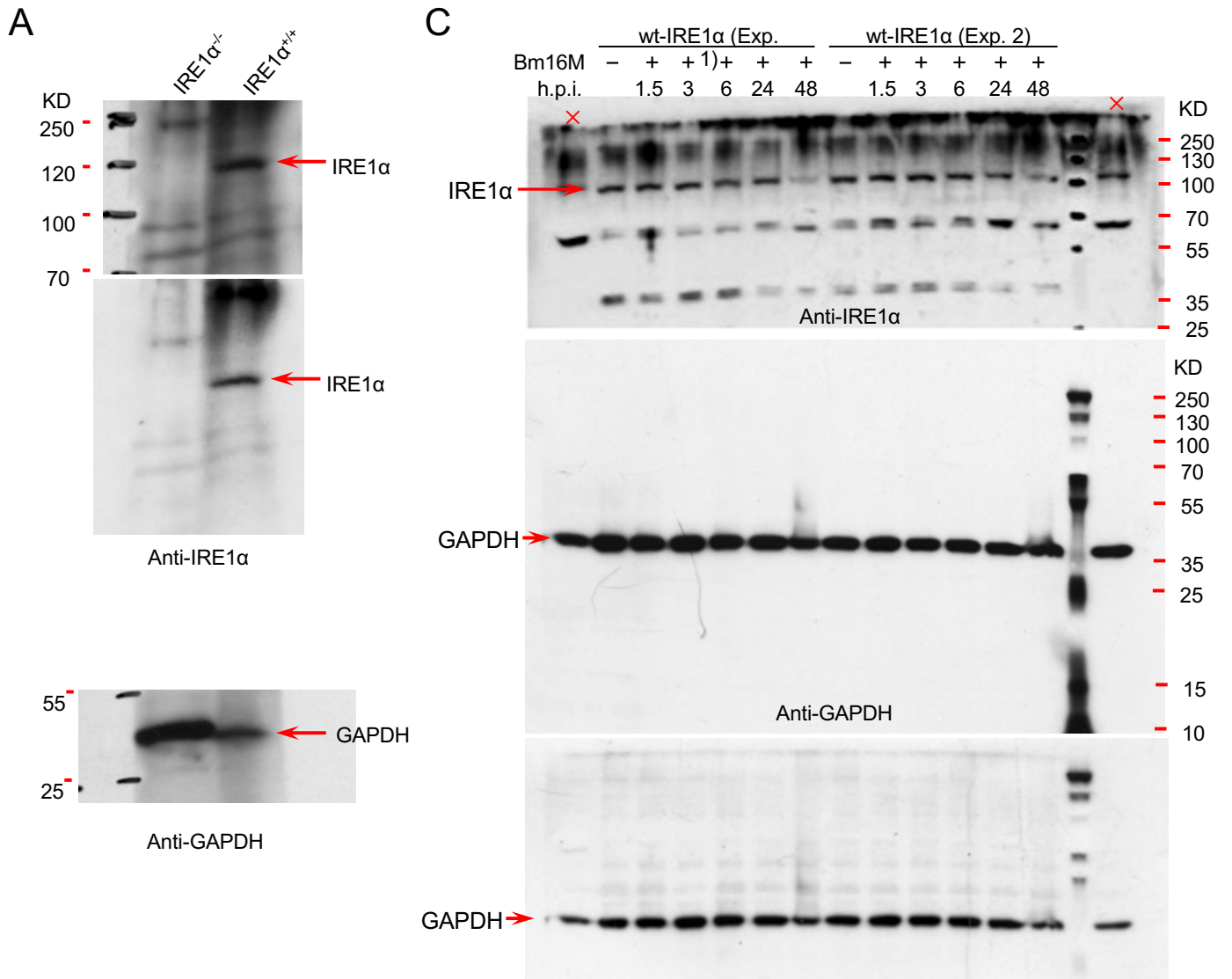


Figure 1—figure supplement 2A, C



Target proteins are indicated by red arrows

Figure 1—figure supplement 2D, E

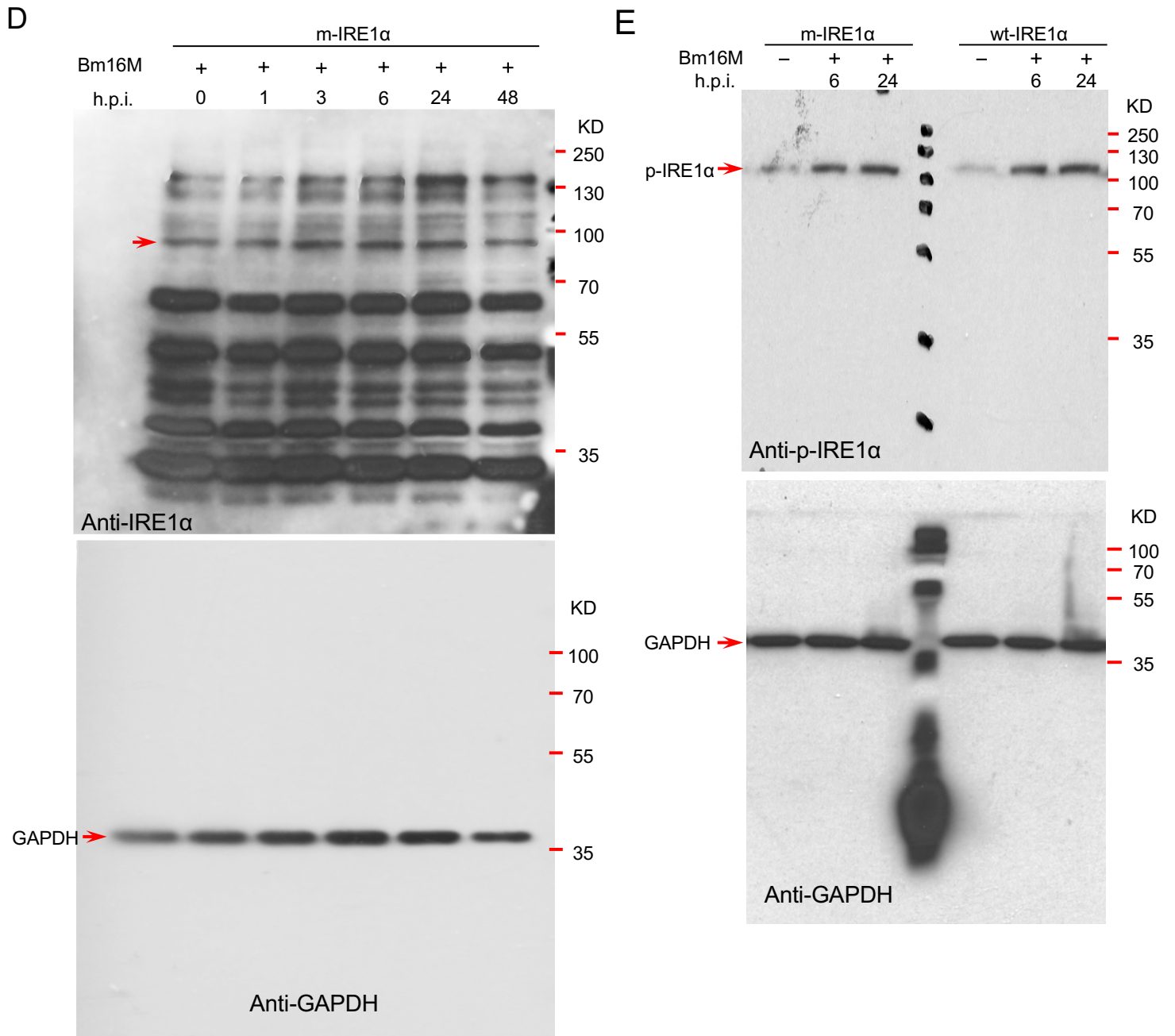
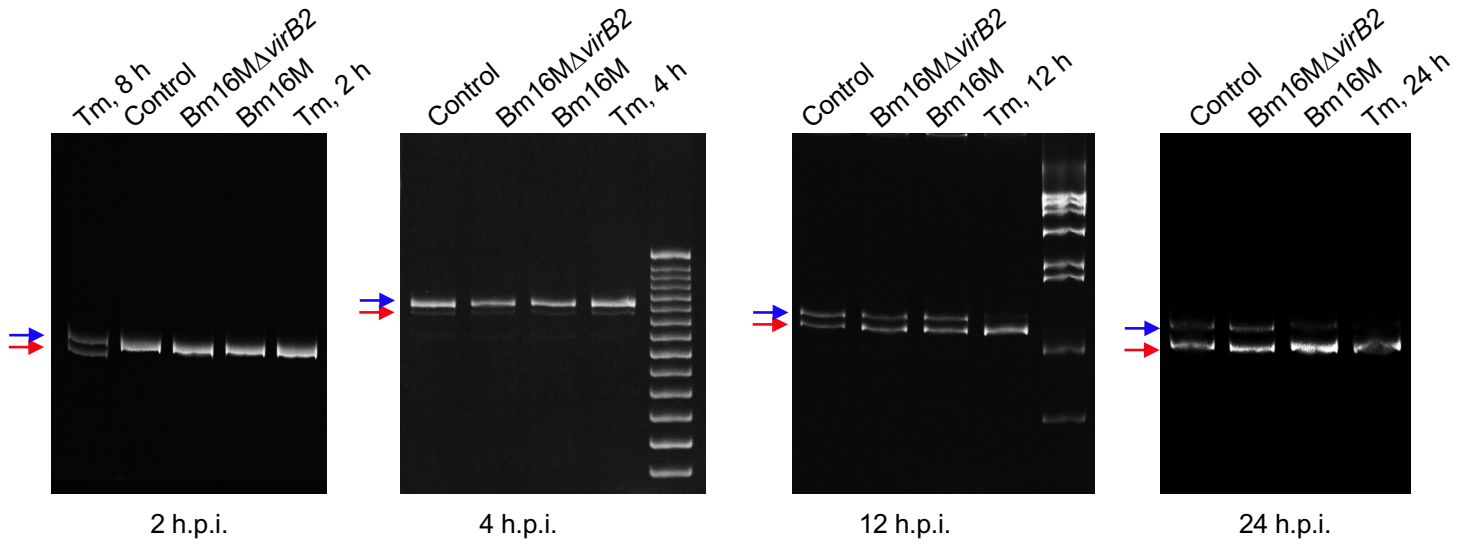


Figure 3—figure supplement 1A

→ : *Xbp1u*
→ : *Xbp1s*



h.p.i.: hours post infection