

Suppl. table 1.

Strain	Sex	Age	Medical condition	Isolated from	Viruria	Viremia
DB	Female	30	Pregnant women	Cervical swab	NA	NA
BL	Male	71	Kidney transplantation	Urine 10 pfu/ml*	3.7 log/ml	Negative
KM	Female	2	HCMV congenital infection?	Urine < 5 pfu/ml*	yes	4.9 log/ml
FS	Female	4	HCMV congenital infection?	Bronchoalveolar lavage < 10 pfu/ml*	NA	Negative

*pfu/ml in culture

Suppl. table 2.

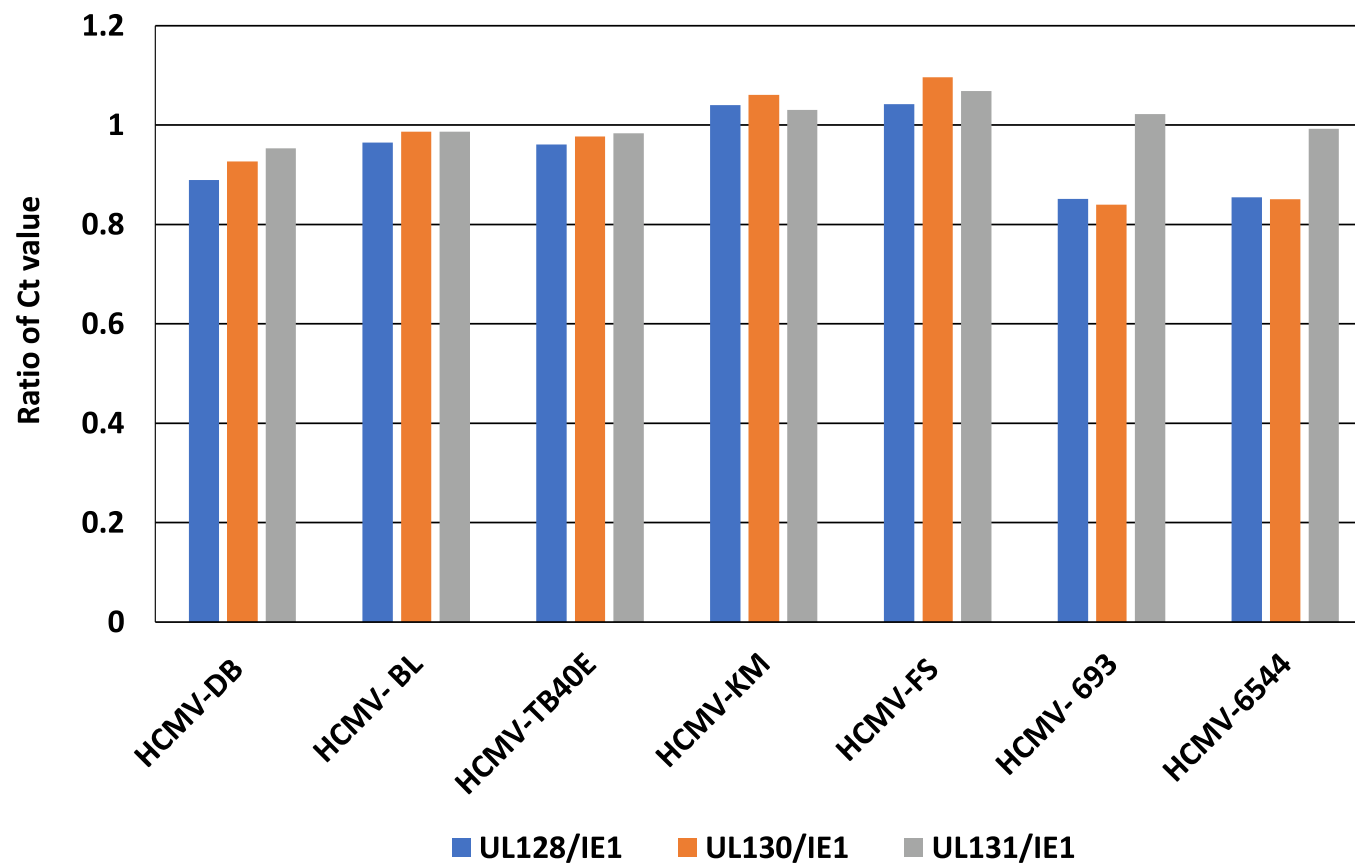
Target	Forward primer	Reverse primer
IE1	5'-CGACGTTCTGCAGACTATG-3'	5'-TCCTCGGTCACTTGTTCAAA-3'
lncRNA4.9	5'-CCCCCAATCTTGGGCG-3'	3'-GTTCGAATCGAGCTTA-3'
Oct4	5'-TGGAGAAGGAGAAGCTGGAGCAAAA-3'	5'-GGCAGAGGTCGTTTGGCTGAATAGACC-3'
SSEA-4 synthase	5'-TGGACGGGCACAACCTTCATC-3'	5'-GGGCAGGTTCTTGGCACTCT-3'
Nanog	5'-TCCTCTCTTCTCTATACTAAC-3'	5'-CCCACAATCACAGGCATAG-3'
Tra-1-60 (Podocalyxin)	5'-CCAGCATCCAGTGTCACCAT-3'	5'-AGCCACGGTAGTGTTGACTG-3'
SOX2	5'-GGGAAATGGAGGGGTGCAAAGAGG-3'	5'-TTGCGTGAGTGTGGATGGGATTGGTG-3'
β -globin	5'-TCCCCTCTACCCCTACTTTCTA-3'	5'-TGCCTGGACTAATCTGCAAGAG-3'
MIEP Enh	5'-CGTCAATGGGTGGAGTAT-3'	5'-AGGTCATGTACTGGGCATAA-3'
EZH2	5'-TCGTGCCCTTGTGTGATAGC-3'	5'-TCTCGGACAGCCAGGTAGC-3'
Myc	5'-ACACCCTTCTCCCTTCG-3'	5'-CCGCTCCACATACAGTCC-3'
GAPDH	5'-CCCCTCTTCAAGGCCTCTAC-3'	5'-CGACCACTTTGTCAAGCTCA-3'

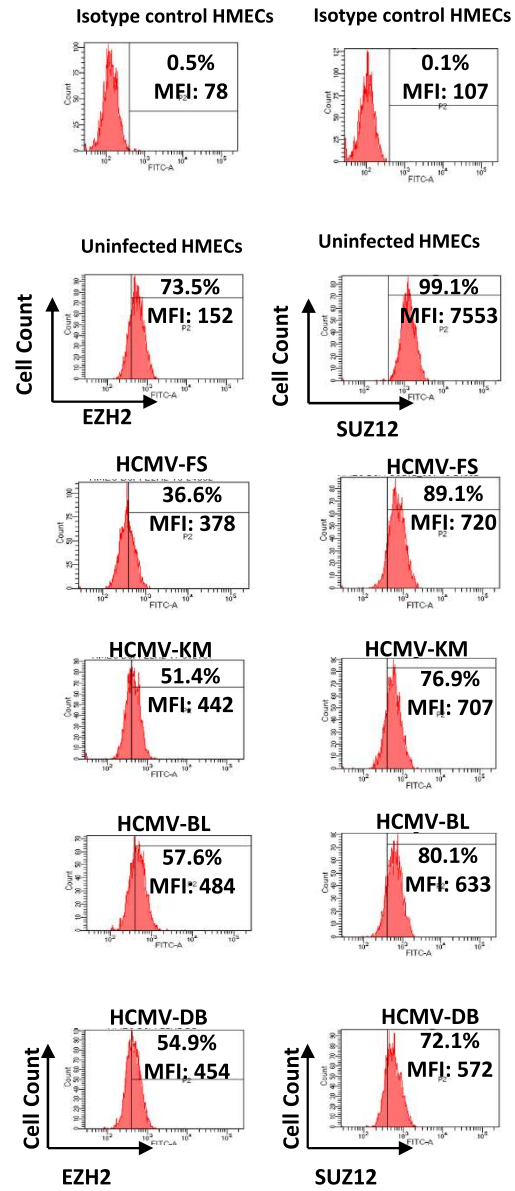
Supplementary table 3.

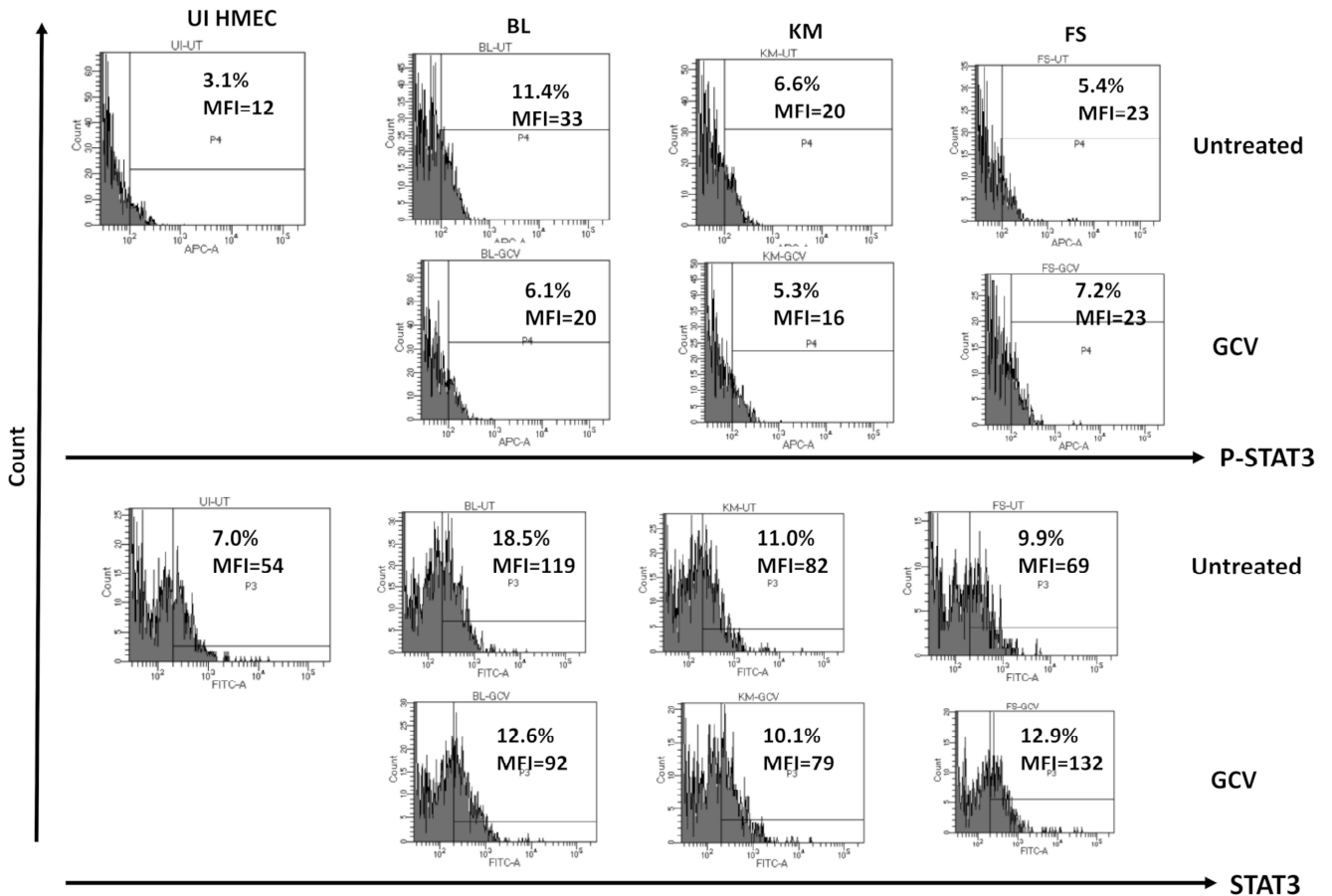
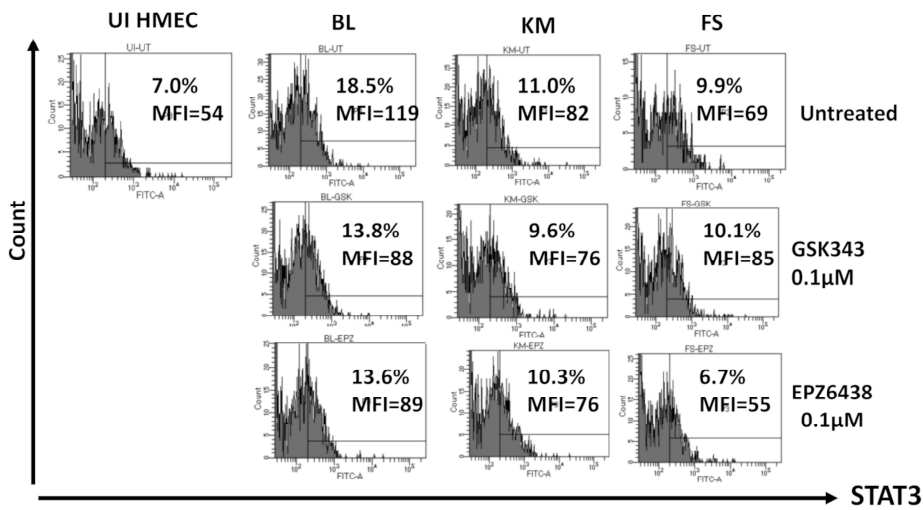
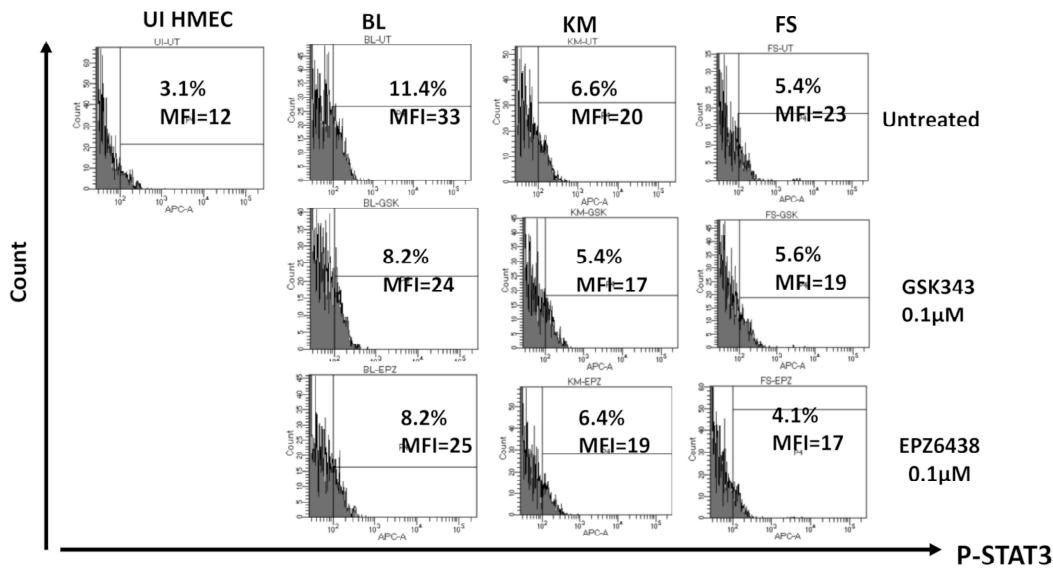
Target	Reference	Manufacturer	Use
EZH2	39875	Active Motif, Carlsbad, CA, USA	Microscopy, Western blotting, Flow cytometry
SUZ12	39357	Active Motif, Carlsbad, CA, USA	Microscopy, Western blotting, Flow cytometry
Myc	06-549	Upstate, Lake Placid, NY, USA	Microscopy, Western blotting, Flow cytometry
pp65	SC-58116	Santa Cruz Biotechnology, Santa Cruz, CA, USA	Microscopy
HCMV late Ag	11-005	BioMérieux, Craaponne, France	Microscopy
Oct4	ab19857	Abcam, Cambridge, UK	Flow cytometry
SSEA-4	ab16287	Abcam, Cambridge, UK	Flow cytometry
Nanog	ab21624	Abcam, Cambridge, UK	Flow cytometry
Tra-1-60	ab16288	Abcam, Cambridge, UK	Flow cytometry
SOX2	ab97959	Abcam, Cambridge, UK	Flow cytometry
Ki67 Ag	556026	BD Biosciences Franklin Lakes, NJ, USA	Flow cytometry
Akt	SC-81434	Santa Cruz Biotechnology, Santa Cruz, CA, USA	Flow cytometry
pAkt	560378	BD Biosciences Franklin Lakes, NJ, USA	Flow cytometry
STAT3	SC-8019	Santa Cruz Biotechnology, Santa Cruz, CA, USA	Flow cytometry
pSTAT3	558085	BD Biosciences Franklin Lakes, NJ, USA	Flow cytometry
EpCAM	347197	BD Biosciences Franklin Lakes, NJ, USA	Flow cytometry
CD49f	555735	BD Biosciences Franklin Lakes, NJ, USA	Flow cytometry
vimentin	SC-6260	Santa Cruz Biotechnology, Santa Cruz, CA, USA	Flow cytometry
E-cadherin	SC-7870	Santa Cruz Biotechnology, Santa Cruz, CA, USA	Flow cytometry
CD24	555428	BD Biosciences Franklin Lakes, NJ, USA	Flow cytometry
CD44	555478	BD Biosciences Franklin Lakes, NJ, USA	Flow cytometry
Anti-mice FITC	553443	BD Biosciences Franklin Lakes, NJ, USA	Flow cytometry
Anti-rabbit FITC	ab-6717	Abcam, Cambridge, UK	Flow cytometry
Mice IgG PE	550617	BD Biosciences Franklin Lakes, NJ, USA	Flow cytometry
H3K27me3	9733	Cell Signaling Technologies, Danvers, MA, USA	ChIP assay
H3K4me3	ab8580	Abcam, Cambridge, UK	ChIP assay
Total anti-H3	ab1791	Abcam, Cambridge, UK	ChIP assay

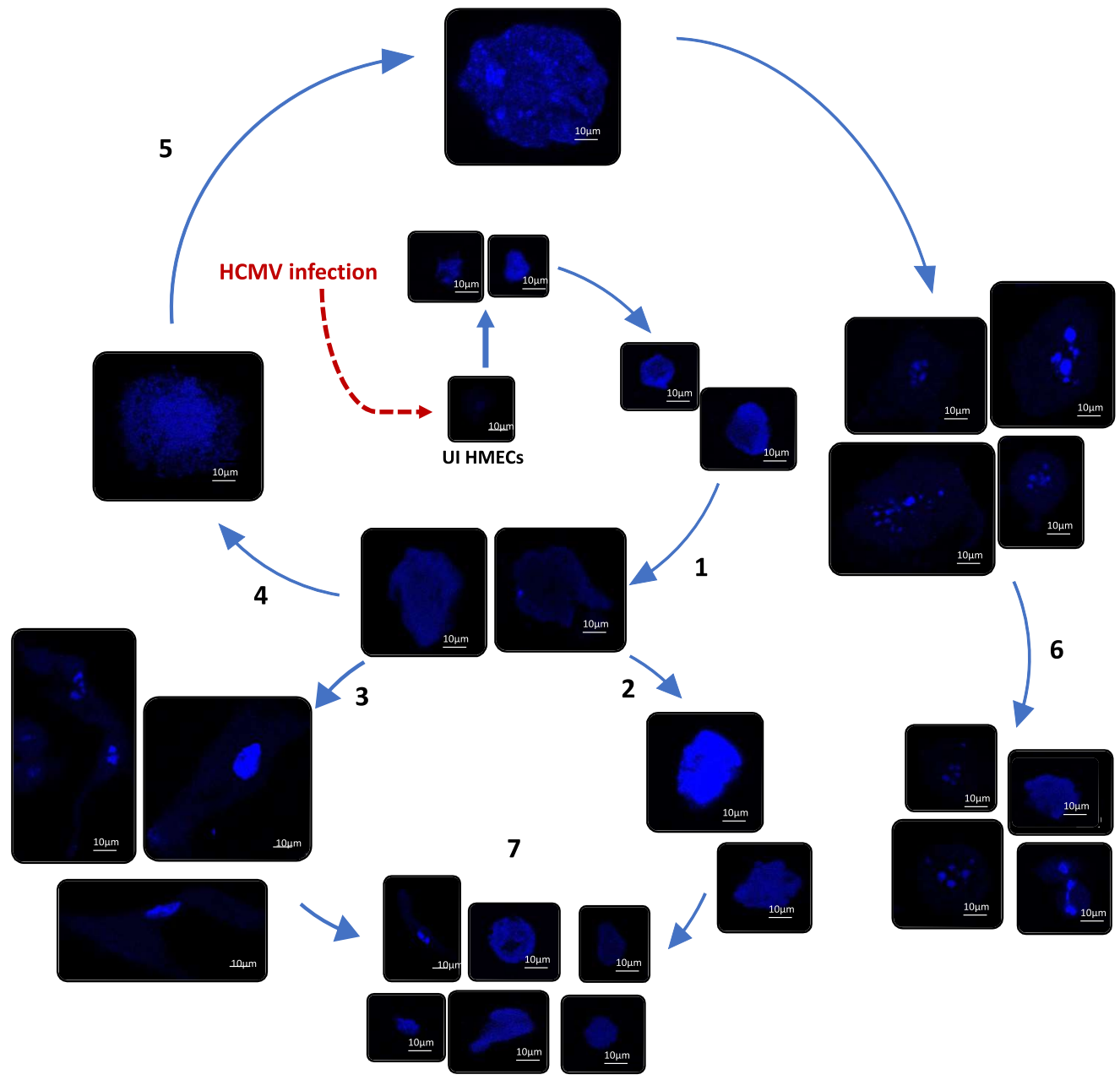
Suppl. Table 4.

N°	Patient Data				Histological Data					
	Patient age at diagnosis time (years)	Treatment	Survival time (years)	Histotype	Elston Ellis grade	Vascular emboli	BC subtype	TNM	PGCC number	IHC analysis
B544	74	4 AC 9 taxol	10	Ductal	III (3,3,3)	Yes	ER-PGR- HER2-	ND	5	Chromogranin A negative ; synaptophysine negative ; rare immunoreactive cells
B693	85	rx	3	Ductal	III (3,3,3)	Yes	ER-PGR- HER2-	ND	4	CK20- TTF1-CD20- P63- EGFR- CK5/6- Chromogranin A negative ; synaptophysine negative No myoepithelial cells in the vicinity of tumoral cells



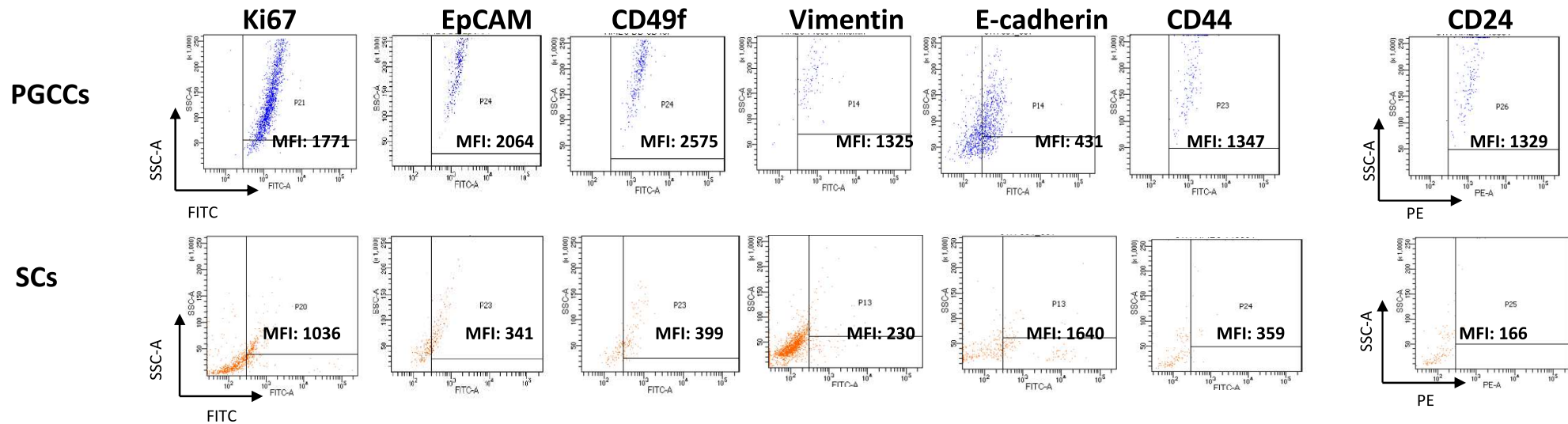




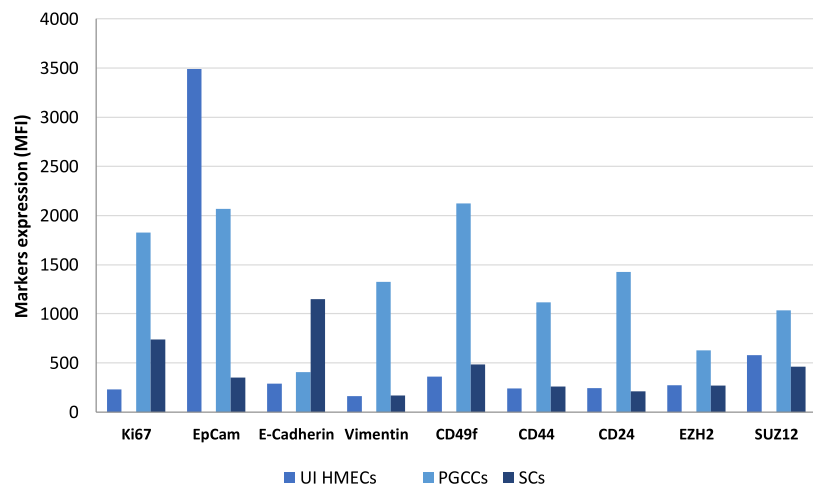


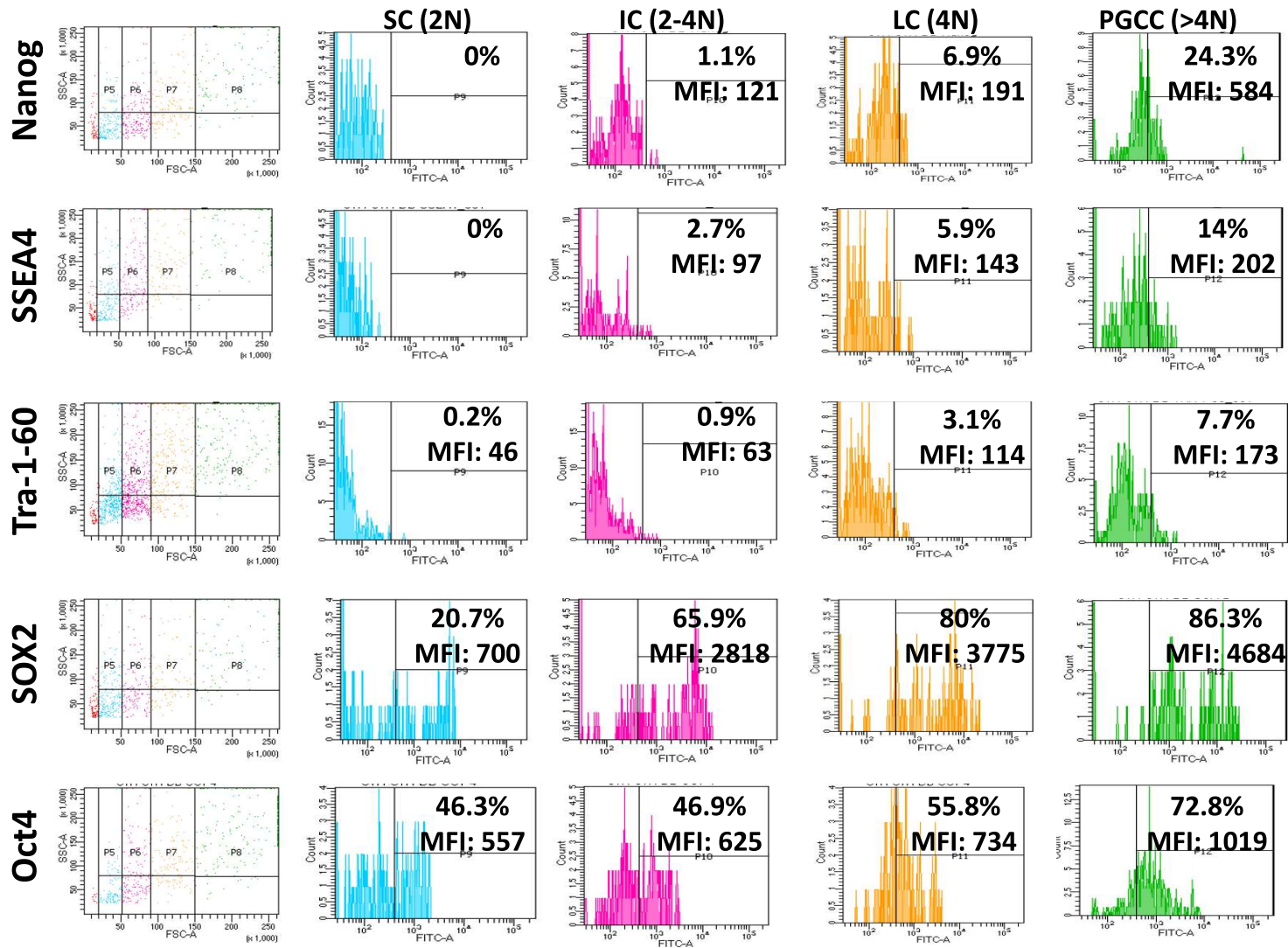
Suppl Figure 4

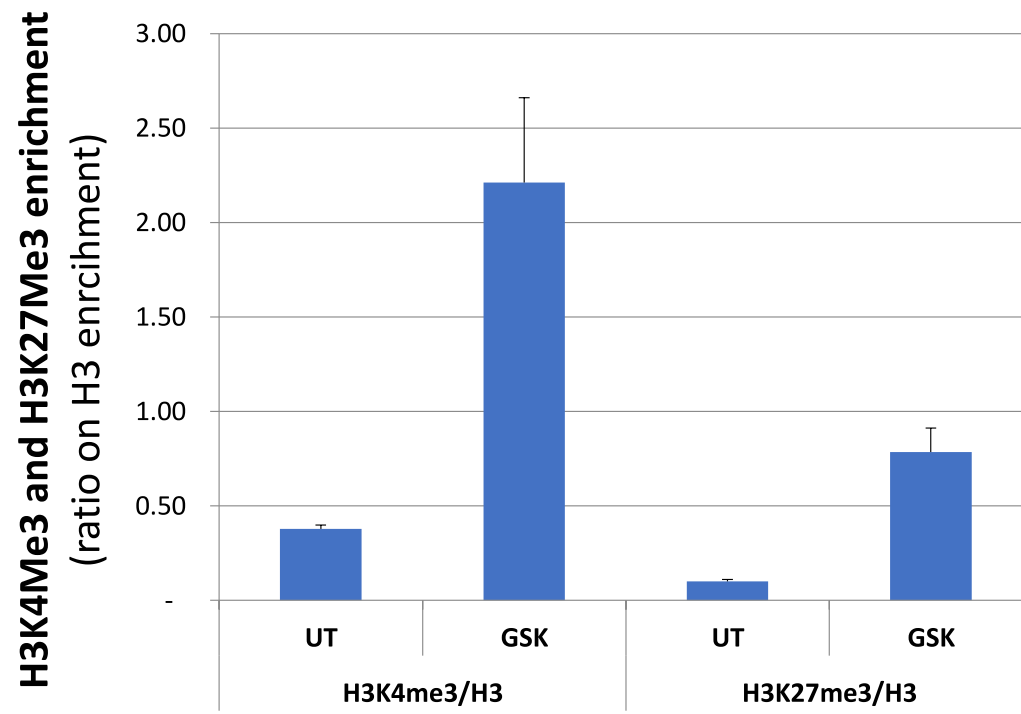
a

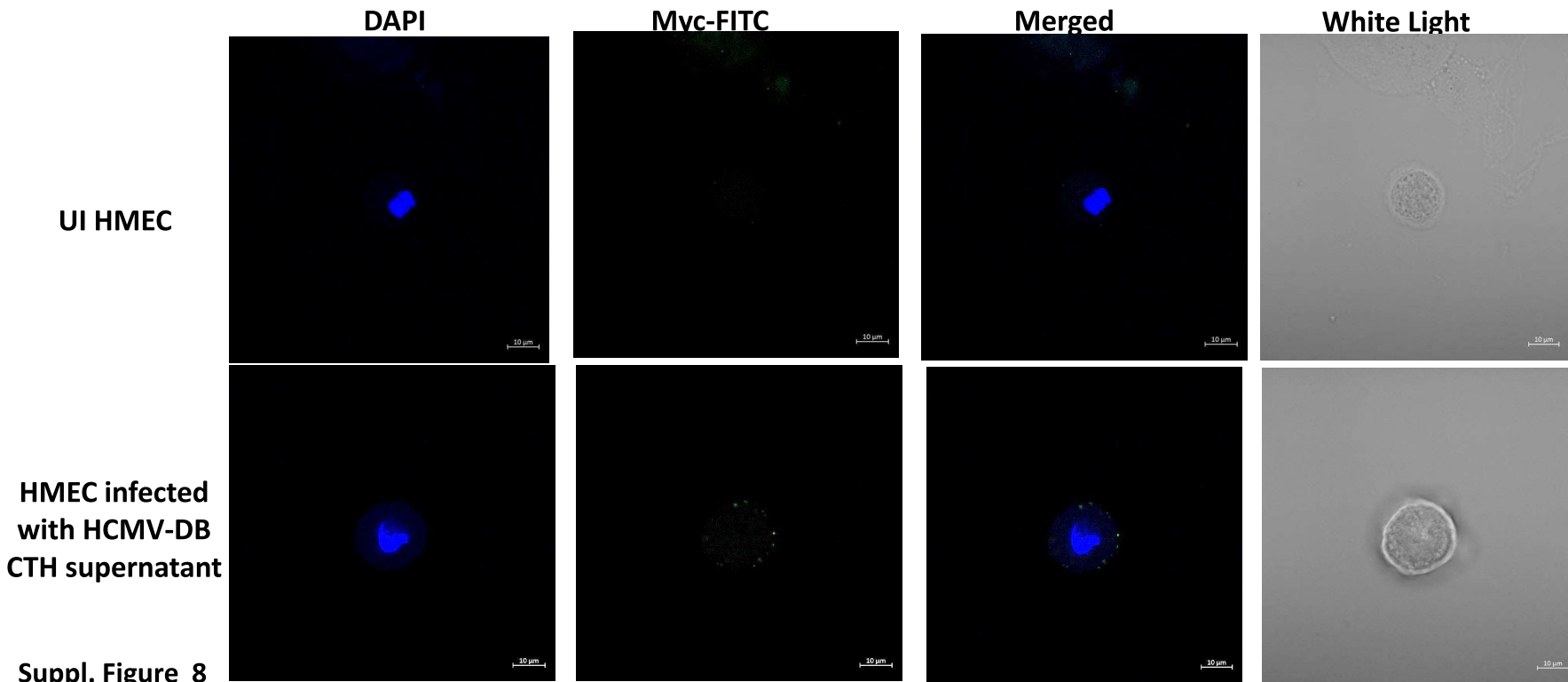
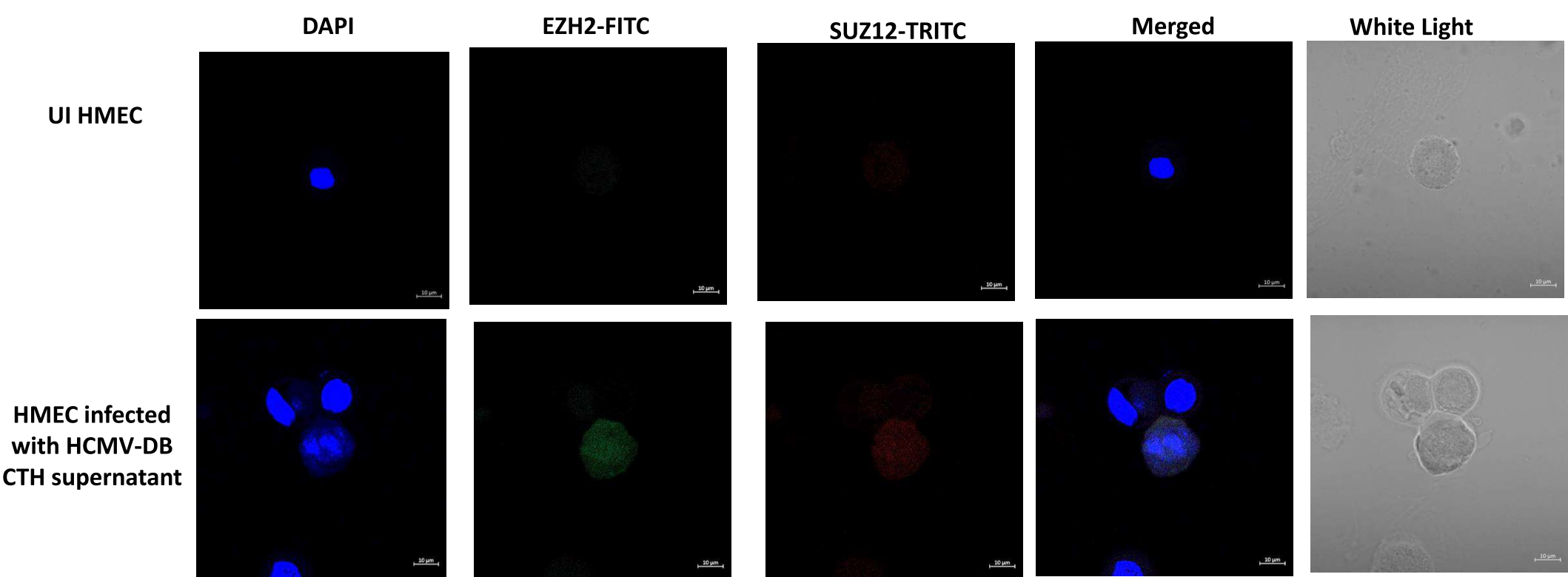


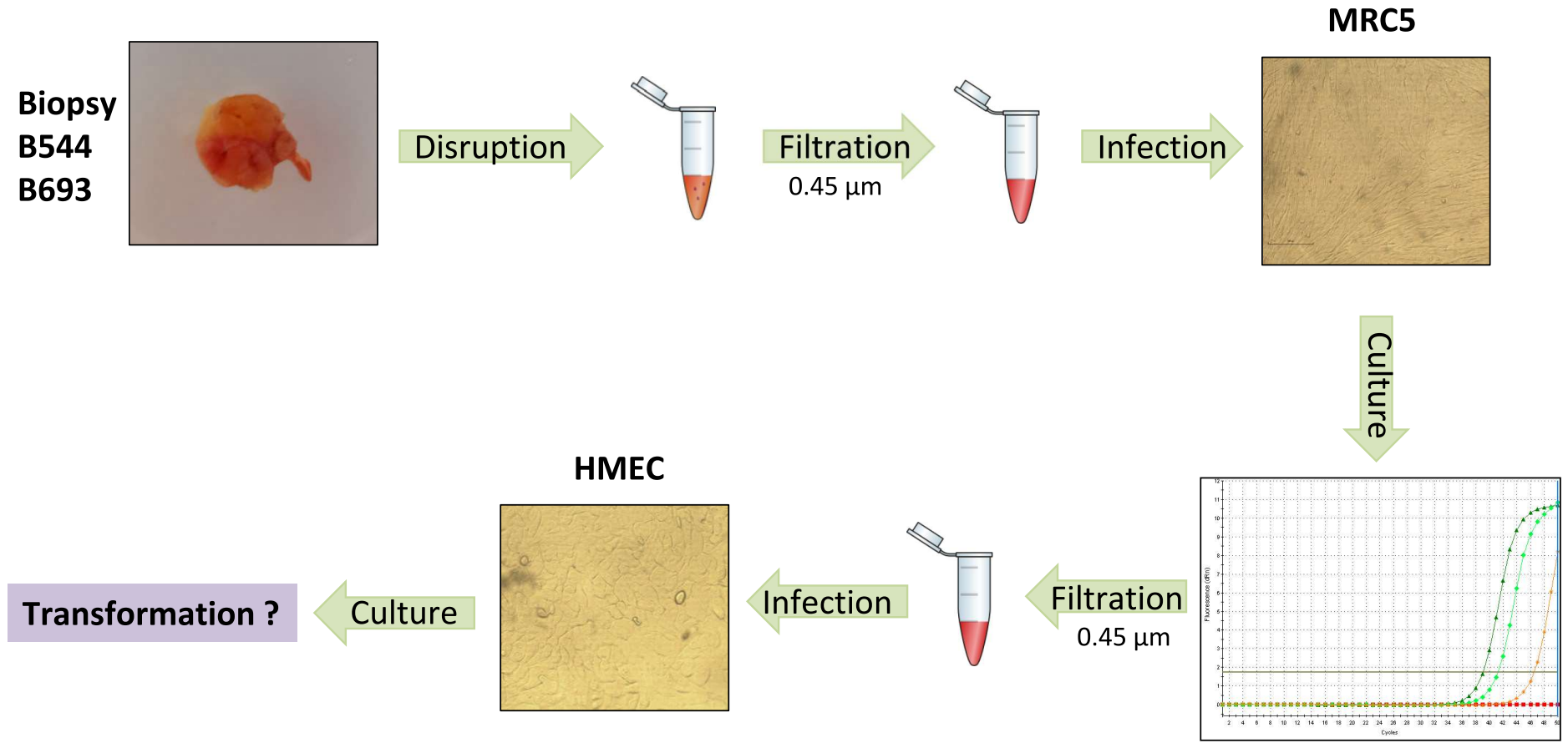
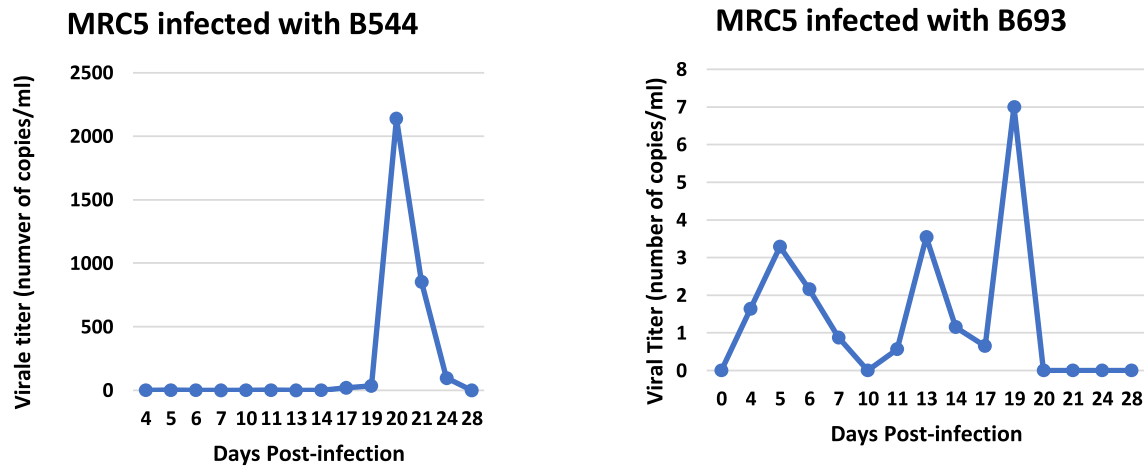
b

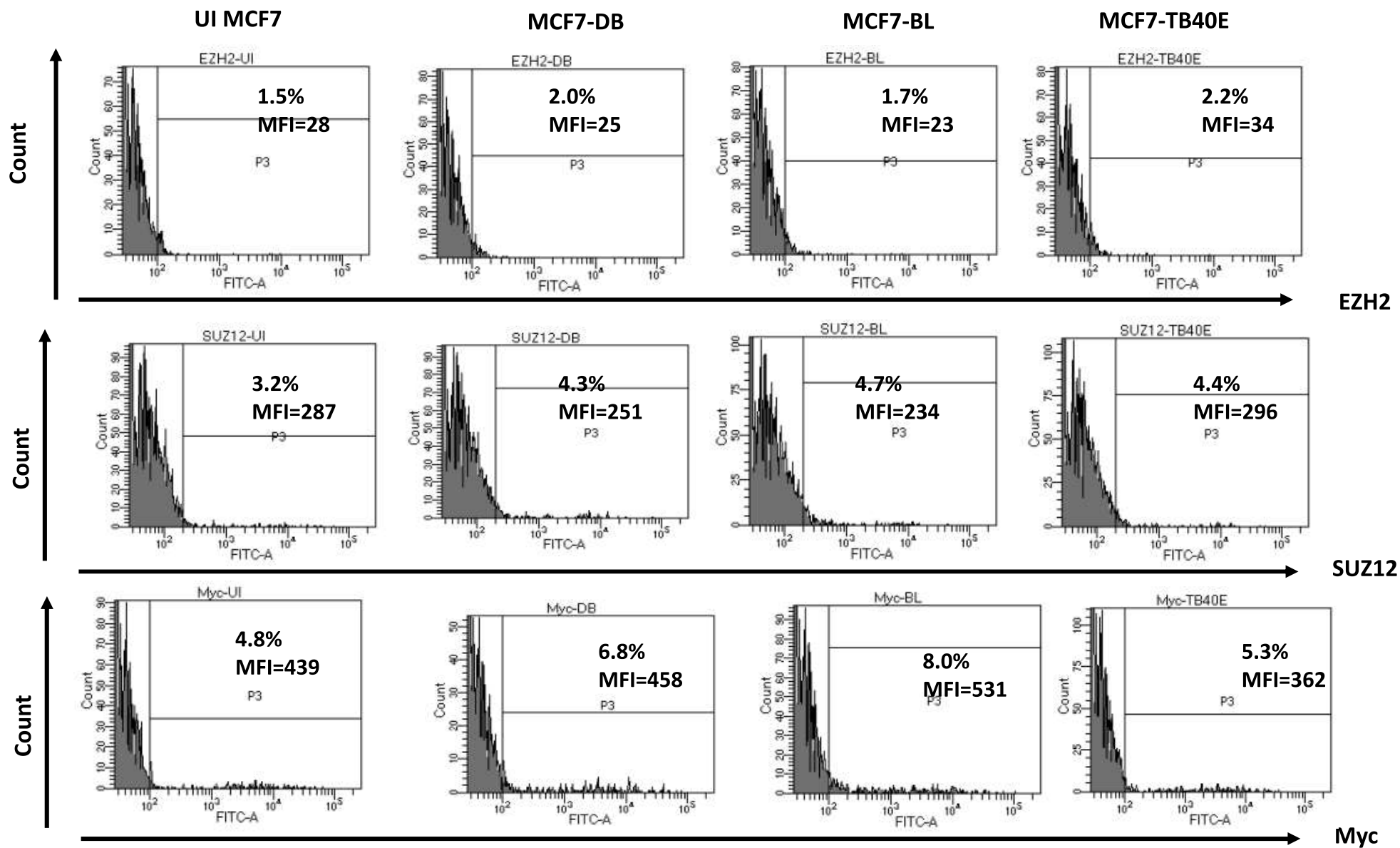




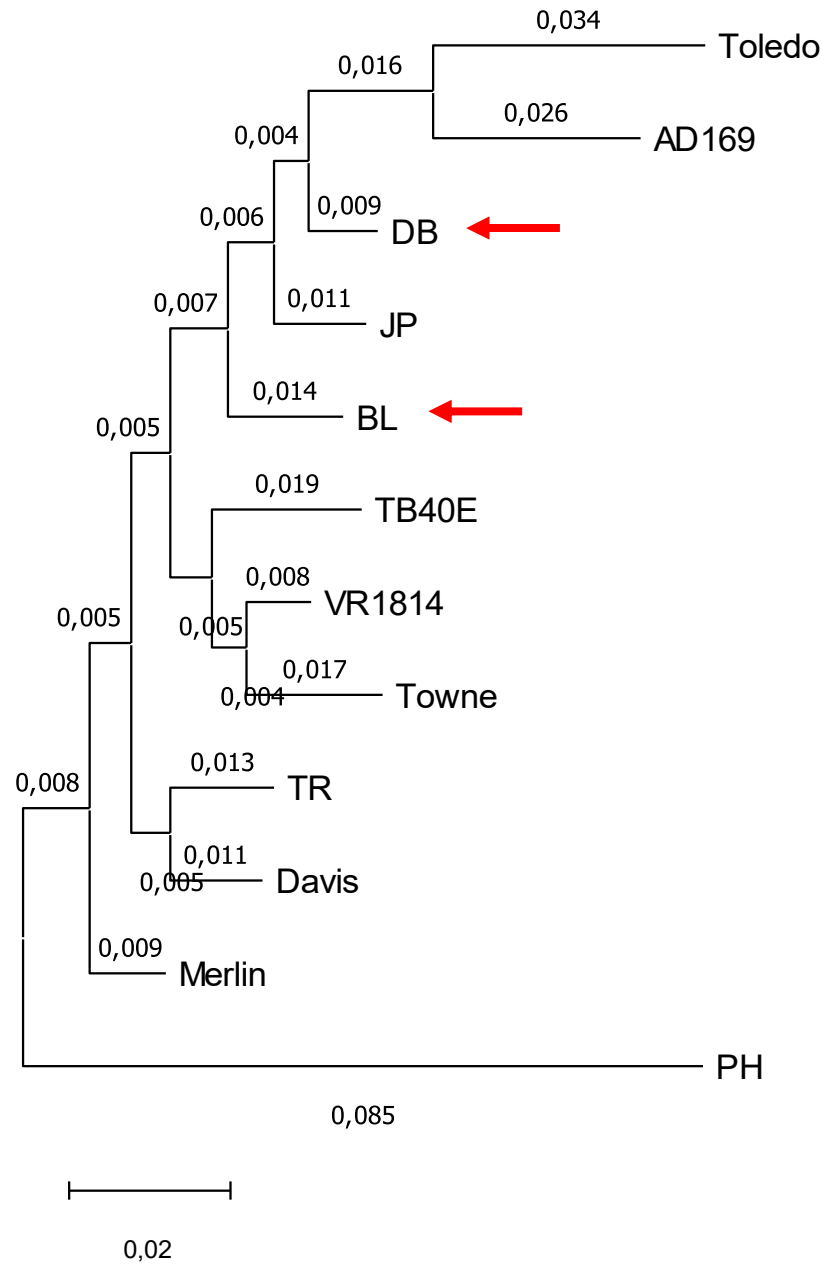




a**b**



Suppl Figure 10



Suppl Figure 11