

All images were detected using Image Quant LAS4000 (GE healthcare) and ECL Western blotting detection reagent (GE Healthcare) as a substrate.

Fig 1A left

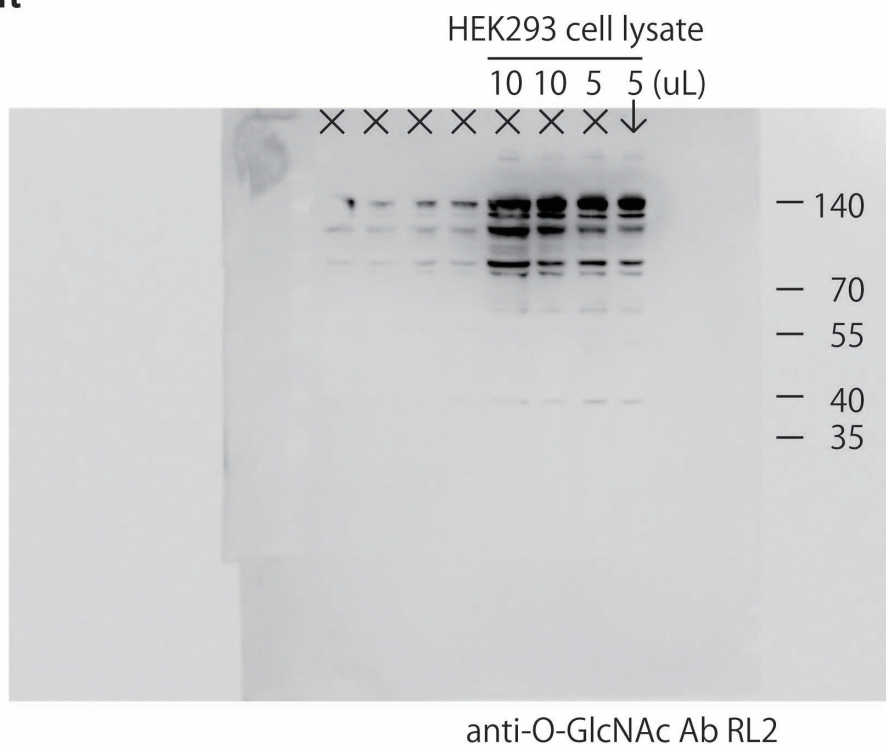
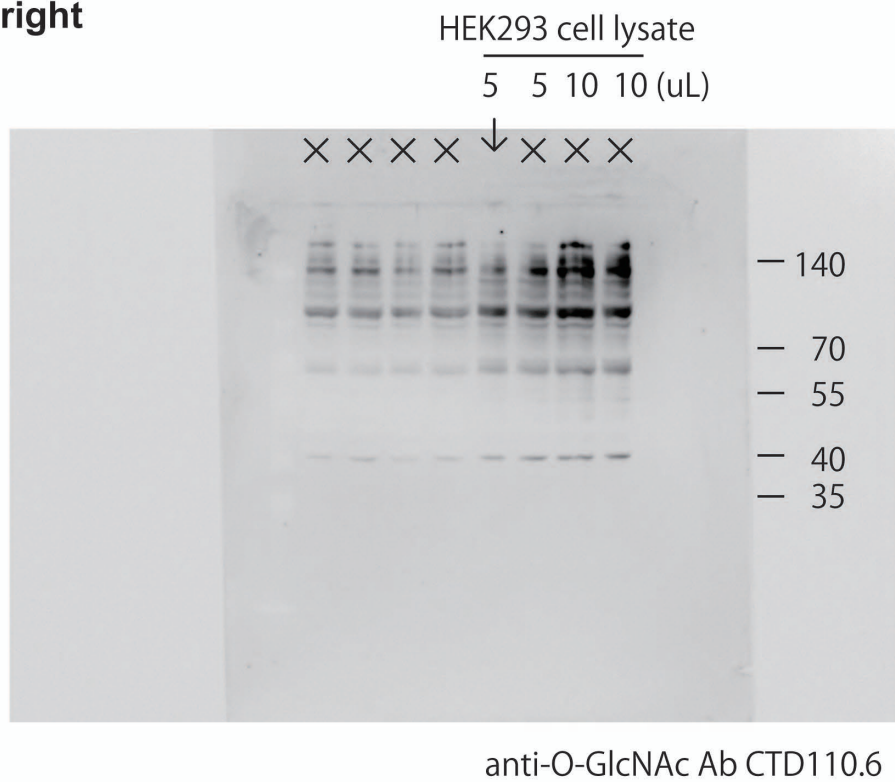


Fig 1A right



HEK293 cell lysate

Fig 1B upper left

anti-O-GlcNAc Ab RL2

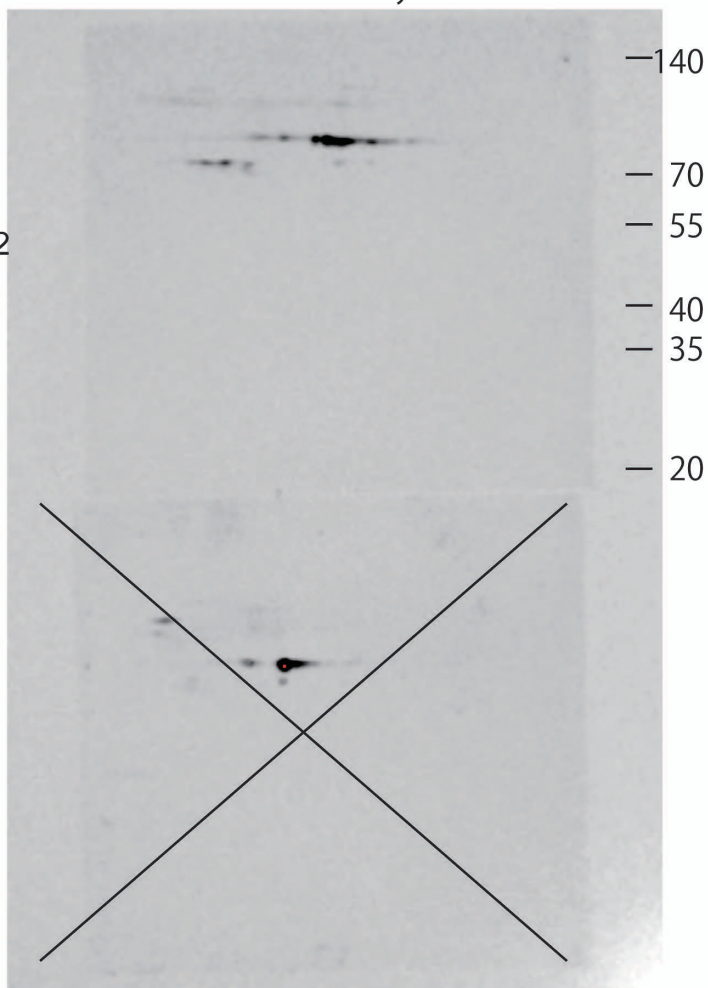


Fig 1B upper right

HEK293 cell lysate

wheat germ agglutinin
(WGA)

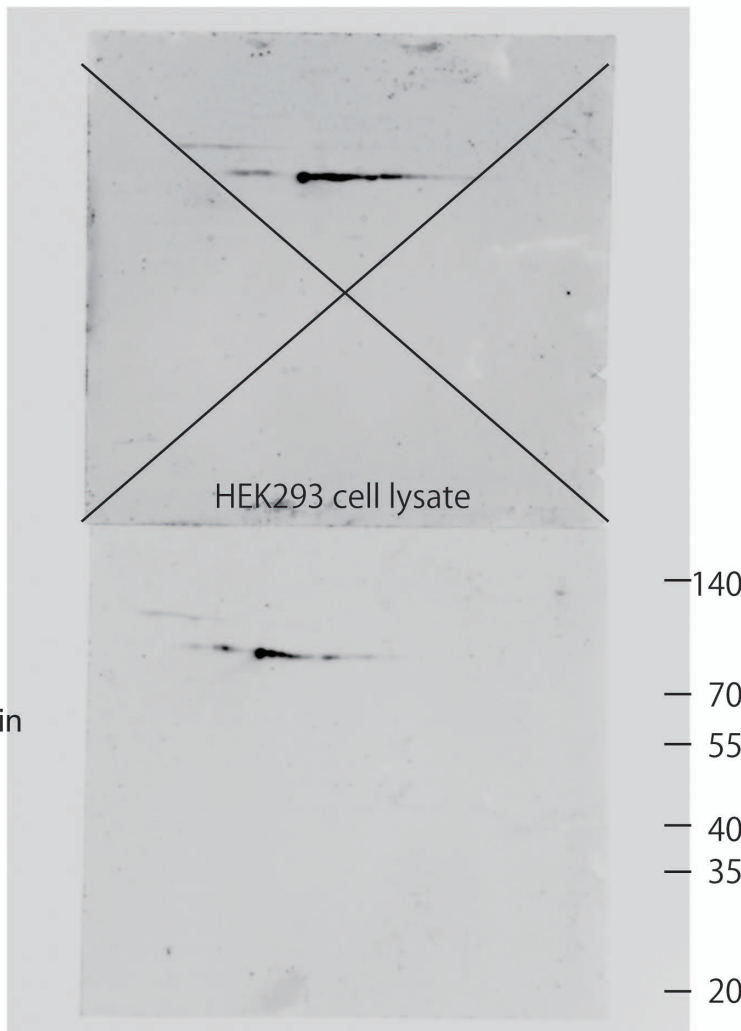


Fig 1B lower left

HEK293 cell lysate
(β GalNAc-T expressed)

Wisteria japonica
agglutinin (WJA)

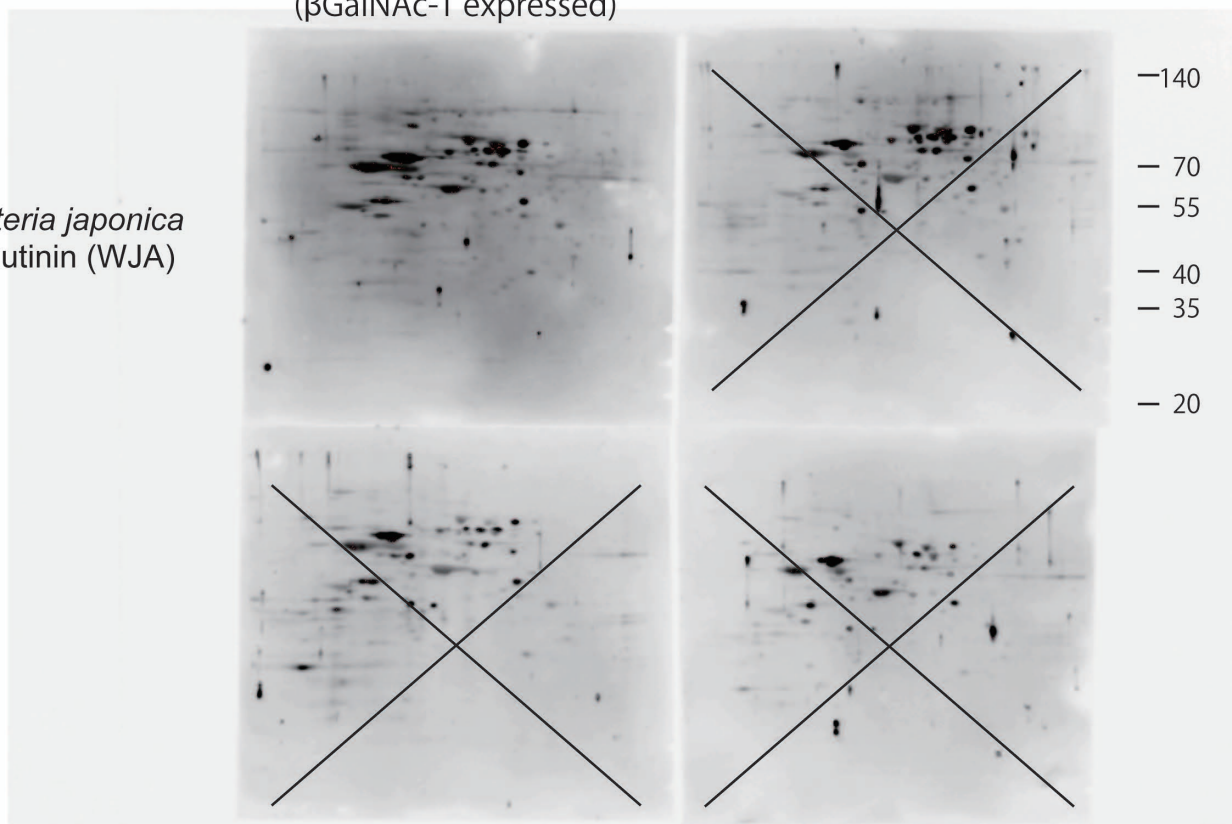


Fig 2B

purified proteins

FLAG- c-Rel FLAG-
 β GalNAc-T

anti-FLAG Ab staining

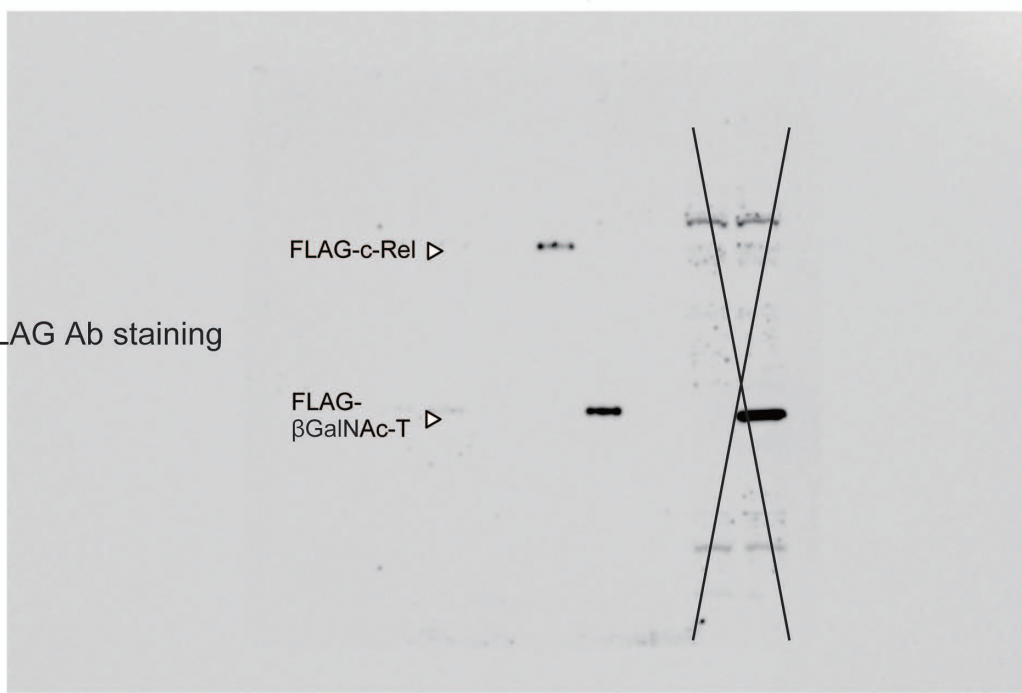


Fig 2C upper

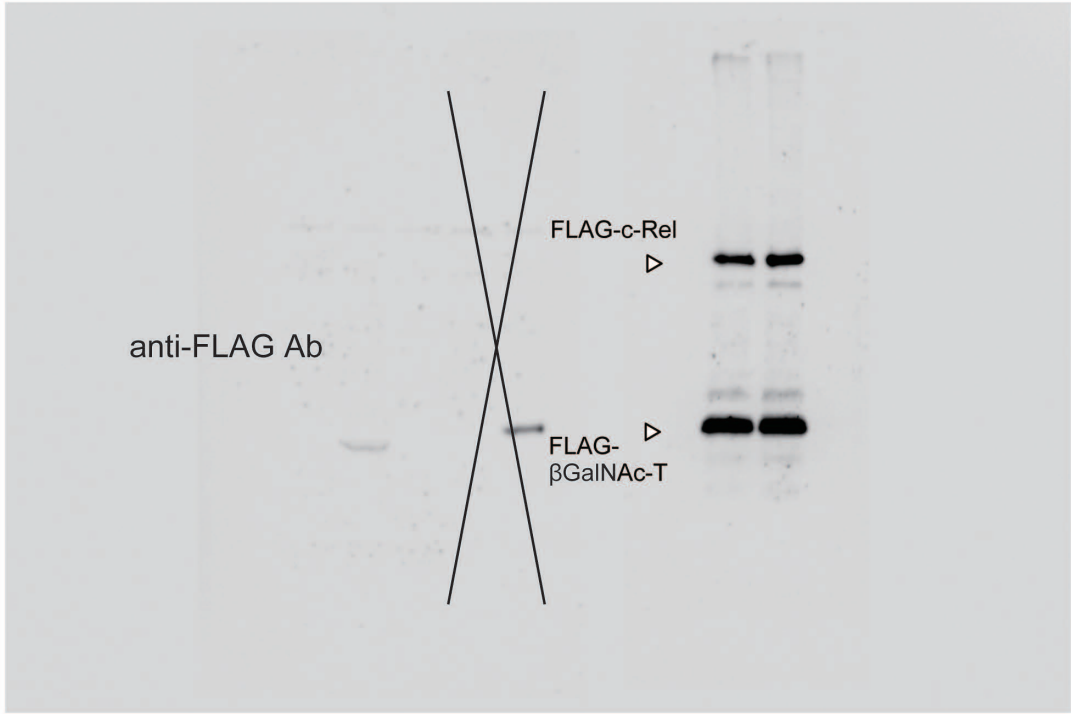


Fig 2C lower

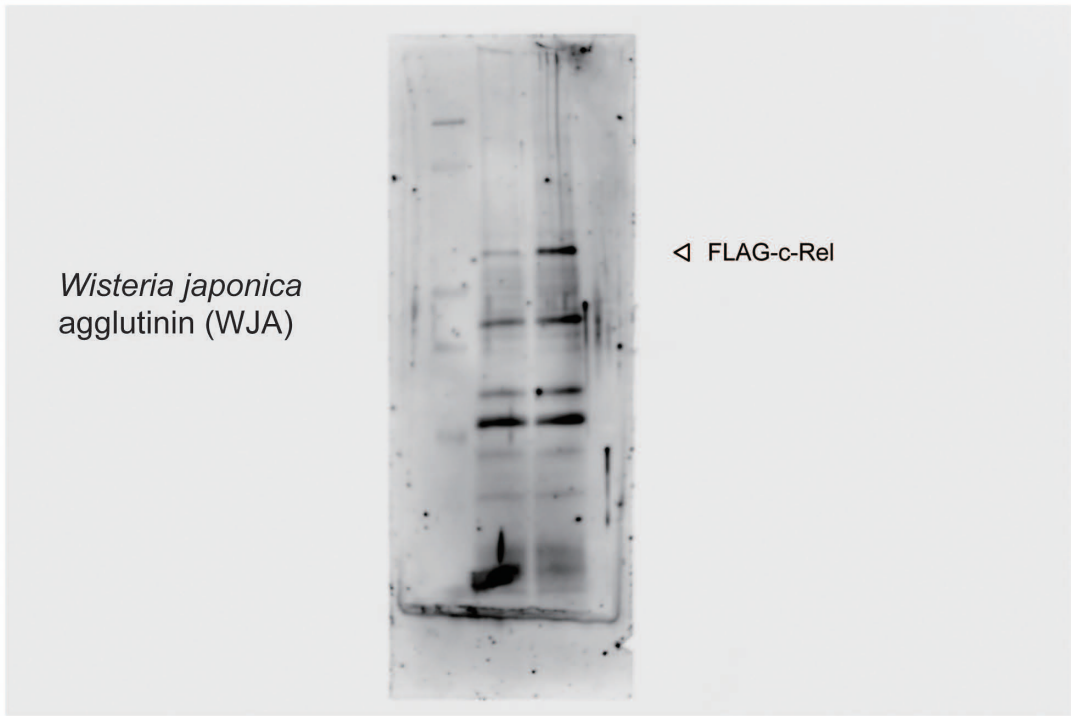
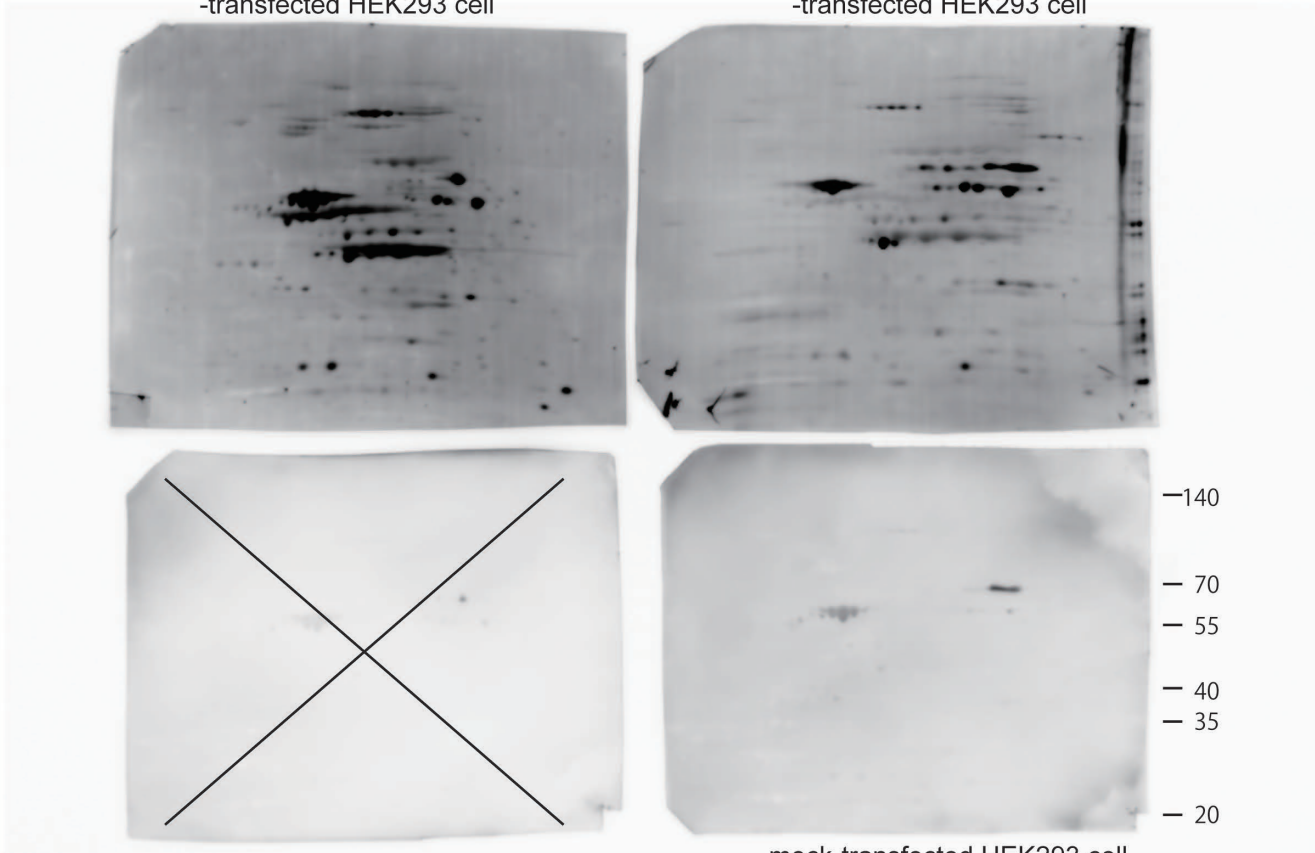


Fig 3*Wisteria japonica* agglutinin (WJA) staining**Fig 3B middle**FLAG-NLS- β 4GalNAc-T
-transfected HEK293 cell**Fig 3B left**FLAG- β 4GalNAc-T
-transfected HEK293 cell

mock-transfected HEK293 cell

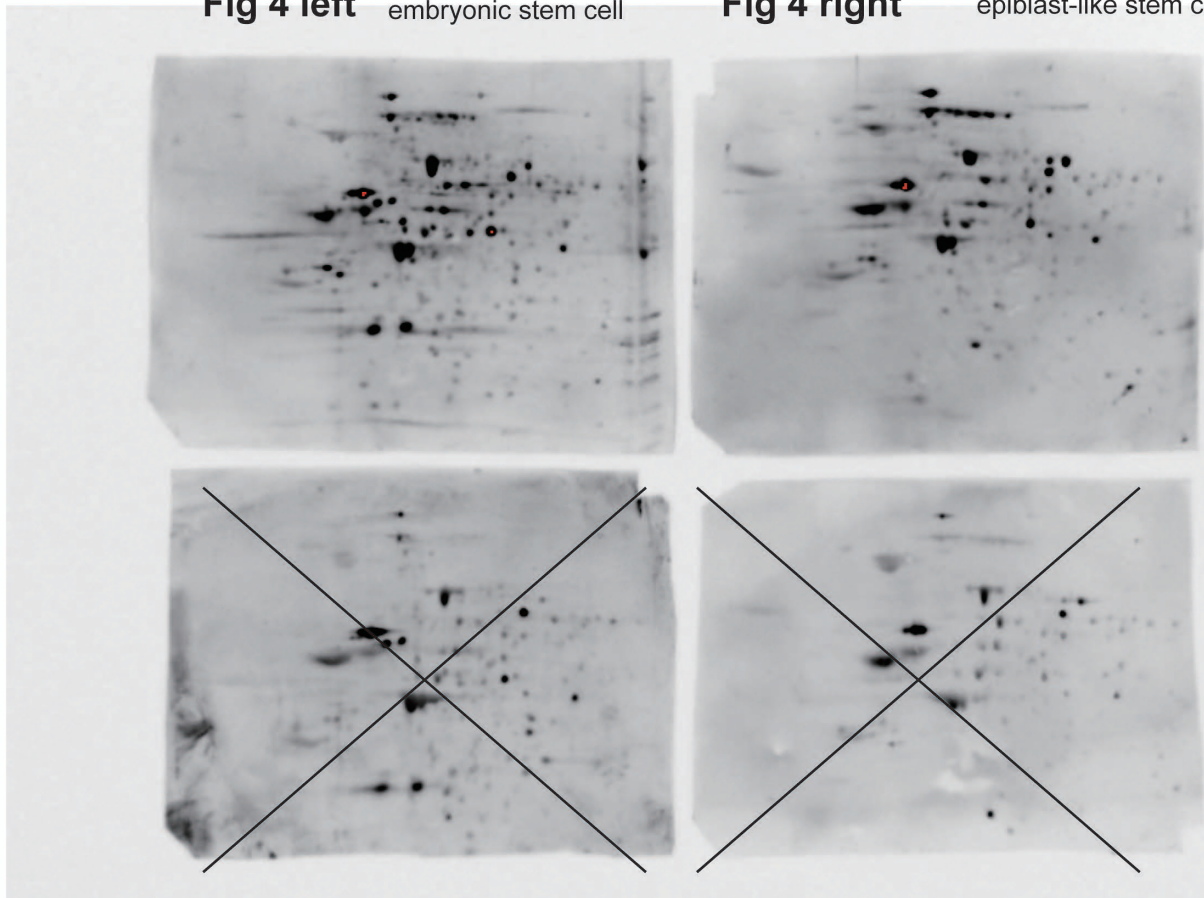
Fig 3B right**Fig 4***Wisteria japonica* agglutinin (WJA) staining**Fig 4 left** embryonic stem cell**Fig 4 right** epiblast-like stem cell

Fig 5

Fig 5A

IP: O-GlcNAc Ab
(RL-2)
WB: Sox2 Ab

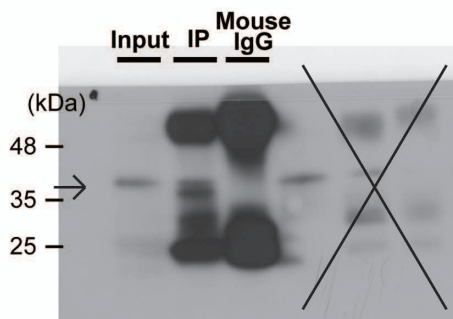


Fig 5B upper

IP: Sox2 Ab
WB: Sox2 Ab
(long exposure of Fig 5A)

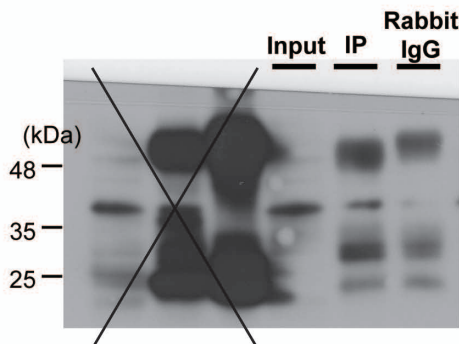


Fig 5B lower

IP: Sox2 Ab
WB: O-GlcNAc Ab
(RL-2)

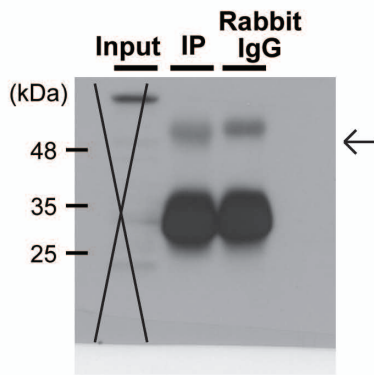


Fig 5C upper

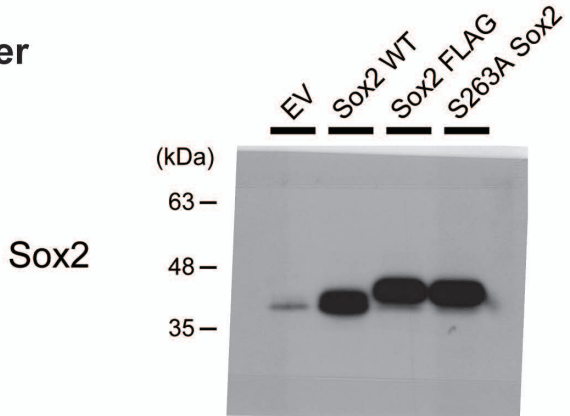


Fig 5C middle

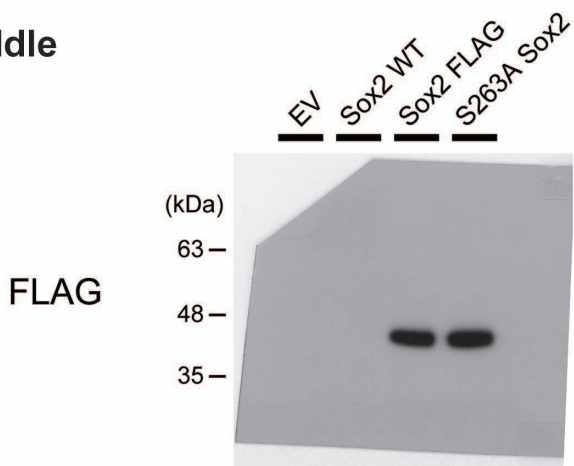
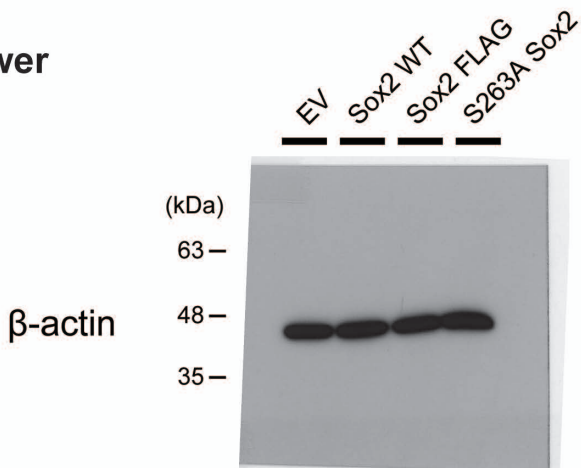


Fig 5C lower



48 —

35 —

Fig 5D upper

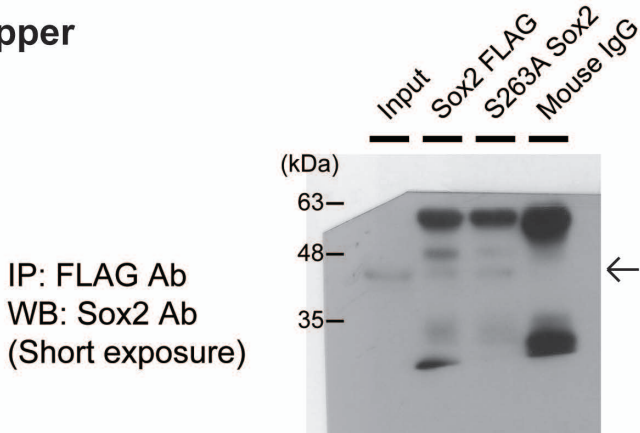


Fig 5D middle

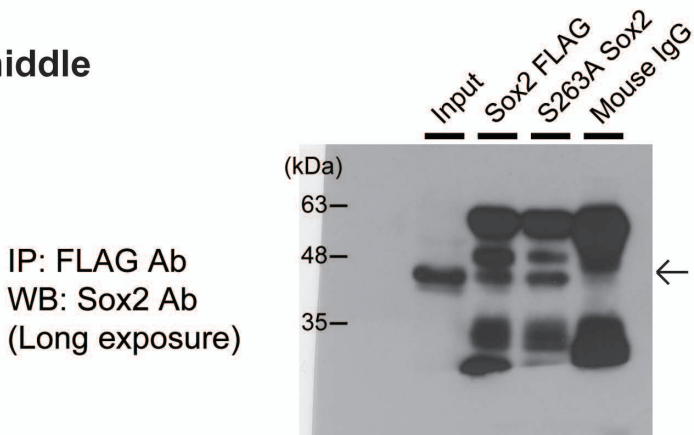


Fig 5D lower

