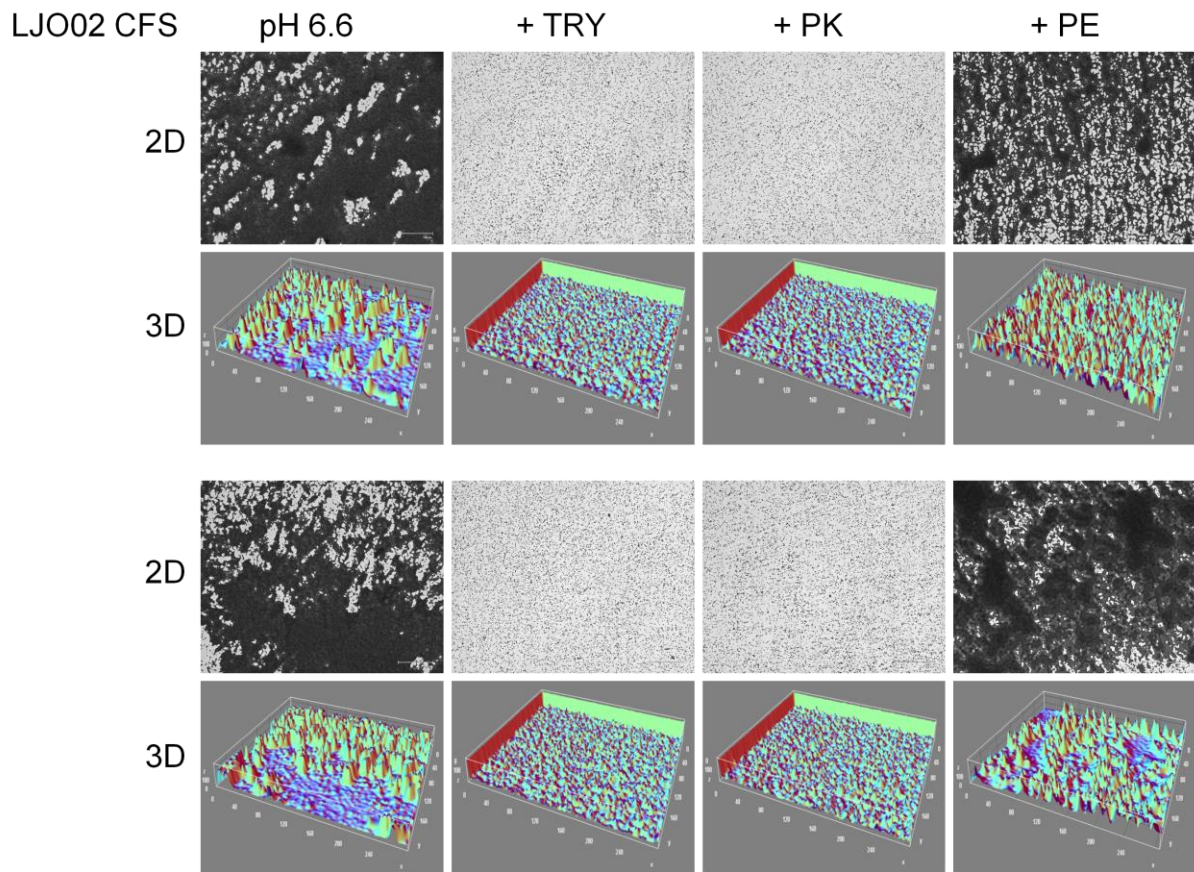


**Supplementary Figure 1S.** CV-stained *S. aureus* biofilm after treatment with CFSs in MRS and TIL. Representative 2D and 3D images of CV-stained *S. aureus* biofilm after 24 h (upper panel) and 48 h (lower panel) of incubation with the CFSs produced in MRS and TIL. 2D pictures magnification: 460 X. Scale bar: 100  $\mu$ m.



**Supplementary Figure 2S.** CV-stained *S. aureus* biofilm after treatment with LJO02 CFSs produced in TIL with adjusted pH or treated with proteolytic enzymes. Representative 2D and 3D images of CV-stained *S. aureus* biofilm after 24 h (upper panel) and 48 h (lower panel) of incubation with the modified CFSs. 2D picture magnification: 460 X. Scale bar: 100  $\mu\text{m}$ .